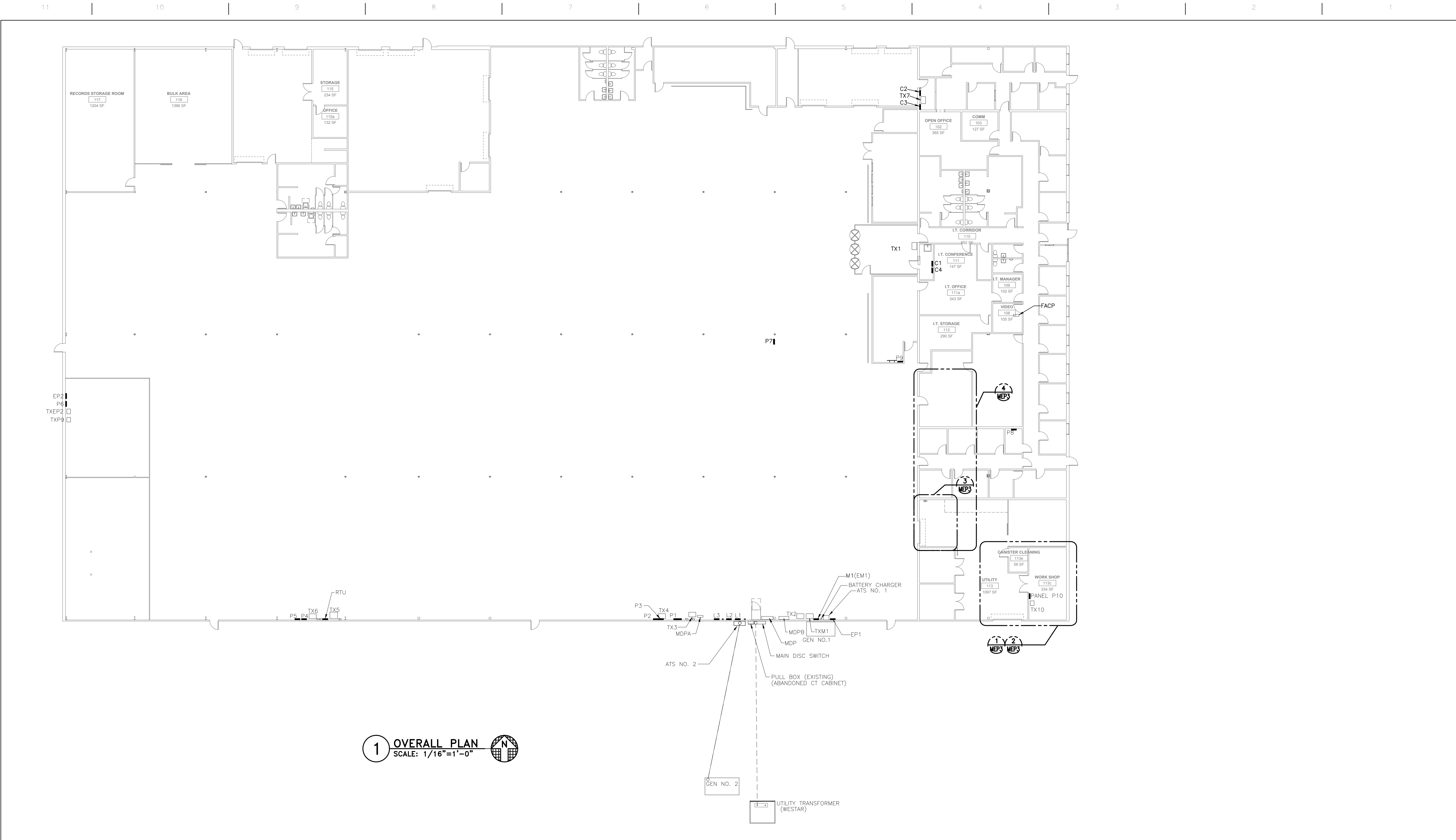


SHANE M. LUTZ eight 1/8 inch = one foot  
0 4 8 12 16  
one quarter inch = one foot  
0 4 8  
one eighth inch = one foot  
0 4 8  
three eighths inch = one foot  
0 4 8  
one half inch = one foot  
0 6 12  
three quarters inch = one foot  
0 6 12  
one inch = one foot  
0 6 12



1 OVERALL PLAN  
SCALE: 1/16"=1'-0"

Revision	Date

CONSULTANTS:

**HENDERSON ENGINEERS**

8325 LENEVA DRIVE  
LENEVA, KS 66214  
TEL 913 742-2000 FAX 913 742-5001  
www.hel-eng.com  
1050001612  
KS. CORPORATE NUMBER: E325  
EXPIRES 12/31/12

Seal

ARCHITECT:

**TOMPKINS ARCHITECTS**

612 NW Kay Drive Lee's Summit Missouri 64063  
p. 816 525 9833 f. 816 524-9005 www.tom-arch.com

COPYRIGHT 2015 TOMPKINS ASSOCIATES, INC DBA TOMPKINS ARCHITECTS. ALL RIGHTS RESERVED. NO PART OF THESE DOCUMENTS MAY BE REPRODUCED, STORED IN A RETRIEVAL SYSTEM, OR TRANSMITTED IN ANY FORM OR BY ANY MEANS, ELECTRONIC, MECHANICAL, PHOTOCOPIING, RECORDING, OR OTHERWISE, WITHOUT THE PRIOR WRITTEN PERMISSION OF TOMPKINS ASSOCIATES, INC DBA TOMPKINS ARCHITECTS.

Drawing Title

**OVERALL FLOOR PLAN**

Approved:

Project Title

**VA CMOP  
EYE WASH AND WELDING HOOD**

Location  
5000 S 13TH STREET, LEAVENWORTH, KS 66048

Date  
10.16.2015

VIA Project Number  
VA770-15-P-0799

A/E Project Number  
2015-06

Drawing Number  
**MEP2**

VA CMOP  
Consolidated Mail  
Outpatient Pharmacy  
5000 S 13TH STREET,  
LEAVENWORTH, KS 66048

**Department of  
Veterans Affairs**