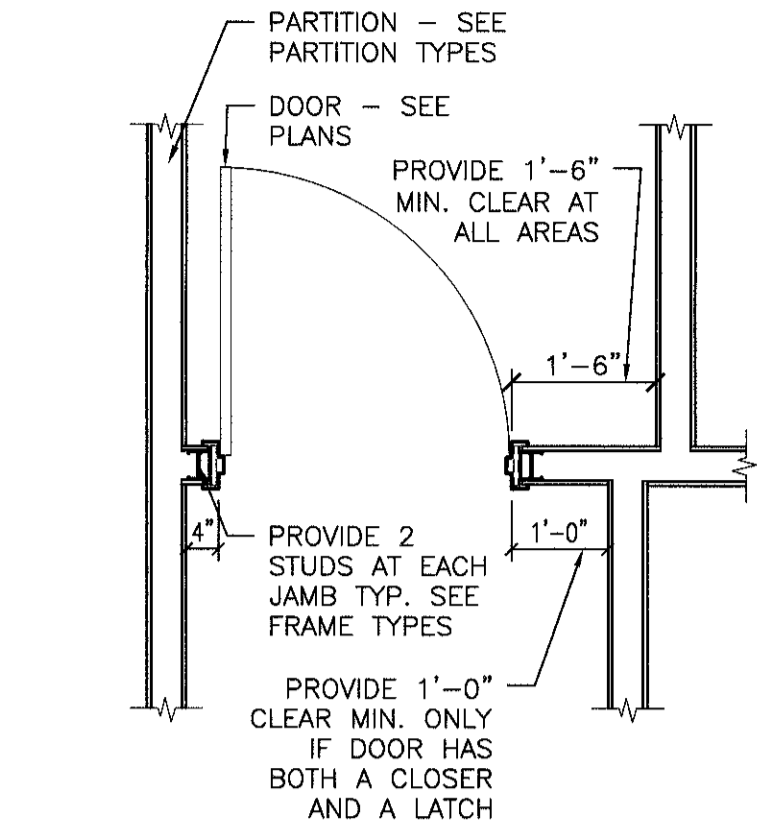


three inches = one foot
one and one half inches = one foot
one inch = one foot
three quarters inch = one foot
one half inch = one foot
three eighths inch = one foot
one quarter inch = one foot
one eighth inch = one foot

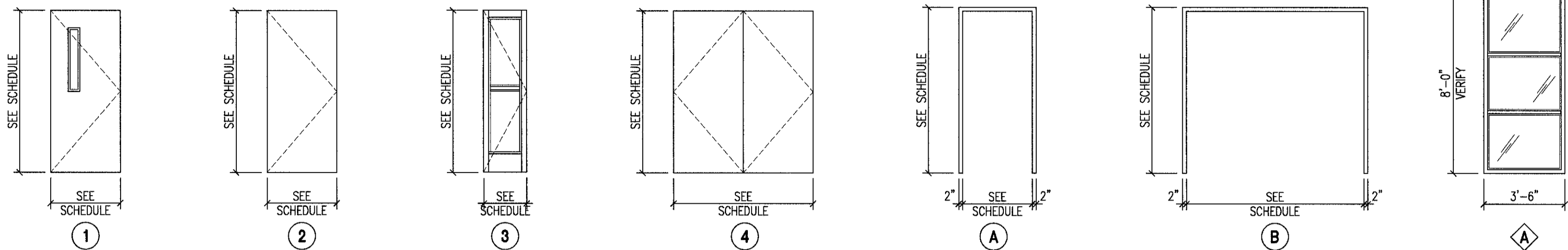
DOOR AND FRAME SCHEDULE

MARK	ROOM NAME	WD	HGT	THK	DOOR MATERIAL	DOOR ELEVATION	FRAME MATERIAL	FRAME ELEVATION	LABEL	HW TYPE	HEAD DTL.	JAMB DTL.	SILL DTL.	NOTES
101	SERVICE	3'-6"	7'-0"	1 3/4"	WOOD	2	HM	A	---	---	2-AE601	6-AE601	---	NEW DOOR, COORDINATE WITH NEW WORK PLANS AND INTERIORS.
102	CLEAN CARTS	3'-6"	7'-0"	1 3/4"	WOOD	2	HM	A	---	---	1-AE601	5-AE601	---	NEW DOOR, COORDINATE WITH NEW WORK PLANS AND INTERIORS.
1E01-1	SOILED UTILITY	EXIST.	EXIST.	EXIST.	EXIST.	4	EXIST.	B	---	---	1-AE601	5-AE601	---	ALTERNATE 2: EXISTING DOORS TO RECEIVE NEW DOOR OPENERS AND FRAMES.
1E08-1	CLEAN UTILITY	EXIST.	EXIST.	EXIST.	EXIST.	4	EXIST.	B	---	---	1-AE601	5-AE601	---	ALTERNATE 2: EXISTING DOORS TO RECEIVE NEW DOOR OPENERS AND FRAMES.
336D	OR SUITE ENTRANCE	EXIST.	EXIST.	EXIST.	EXIST.	3	EXIST.	B	---	---	3-AE601	7/8-AE601	4-AE601	EXISTING AUTO DOORS, COORDINATE WITH ELECTRICAL FOR NEW PUSH PLATE LOCATIONS.
336E	OFFICE, NURSING SUPERVISOR	EXIST.	EXIST.	EXIST.	EXIST.	1	EXIST.	A	---	---	2-AE601	6-AE601	---	EXISTING DOOR RELOCATED.
336F	OFFICE, ANESTHESIA	EXIST.	EXIST.	EXIST.	EXIST.	1	EXIST.	A	---	---	2-AE601	6-AE601	---	EXISTING DOOR RELOCATED.

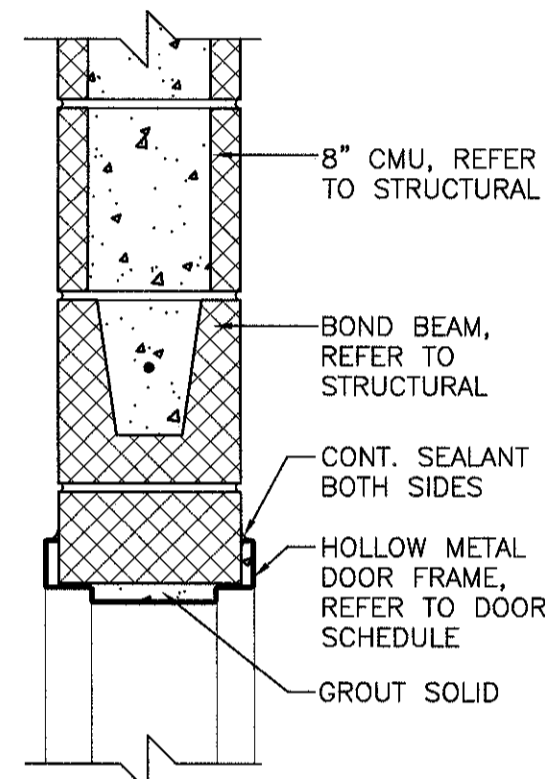
* EXIST. - EXISTING DOOR AND/OR FRAME TO BE RELOCATED, REFER TO FLOOR PLANS. COORDINATE AND RELOCATED EXISTING SIGNAGE.



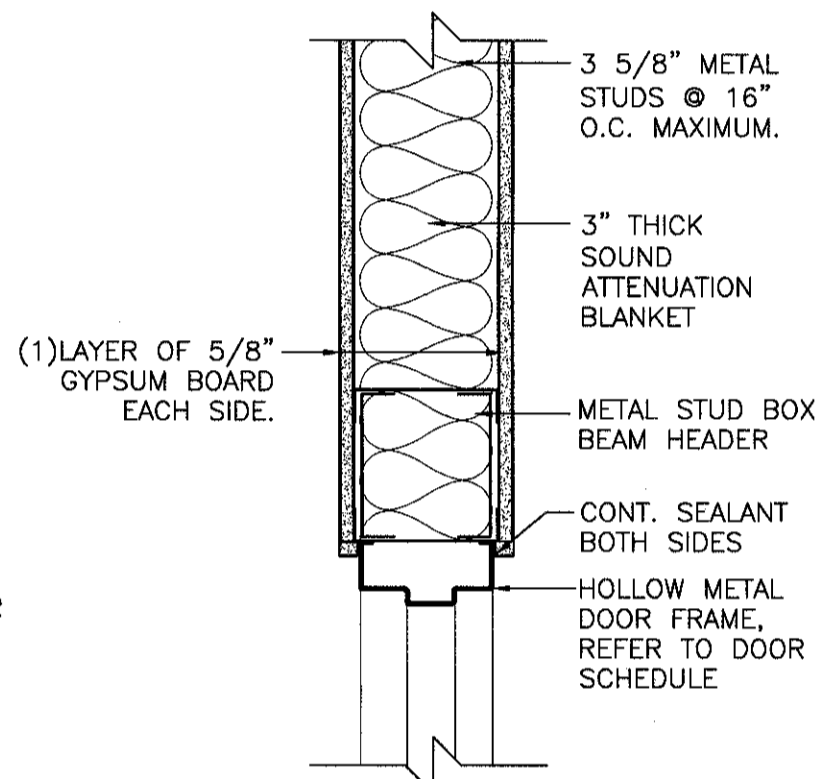
TYPICAL DOOR CLEARANCE
1/2" - 1'-0"



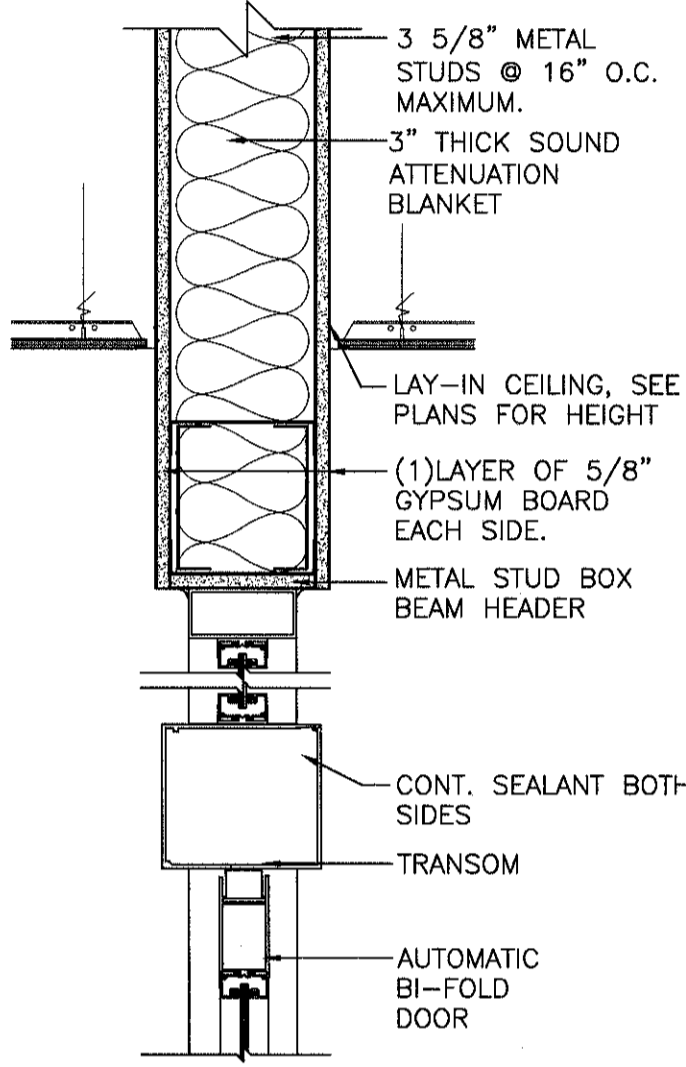
DOOR, WINDOW AND FRAME TYPES
1/4" - 1'-0"



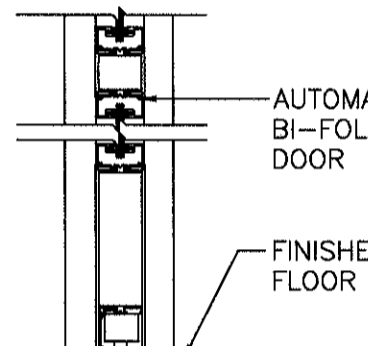
DOOR HEAD DETAIL
1/2" - 1'-0"



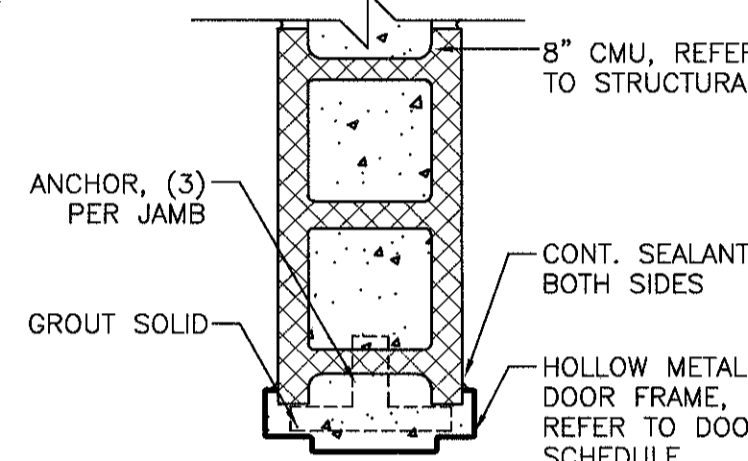
DOOR HEAD DETAIL
1/2" - 1'-0"



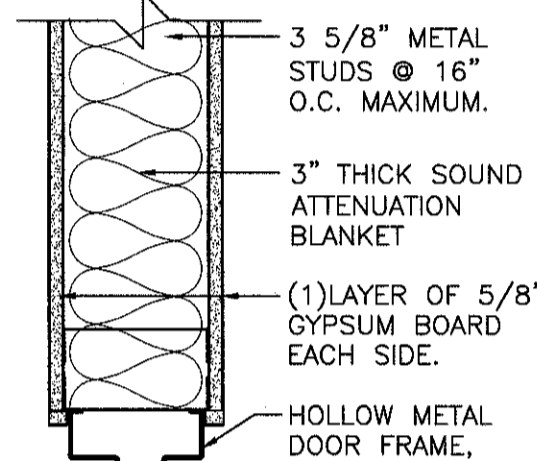
DOOR HEAD DETAIL
1/2" - 1'-0"



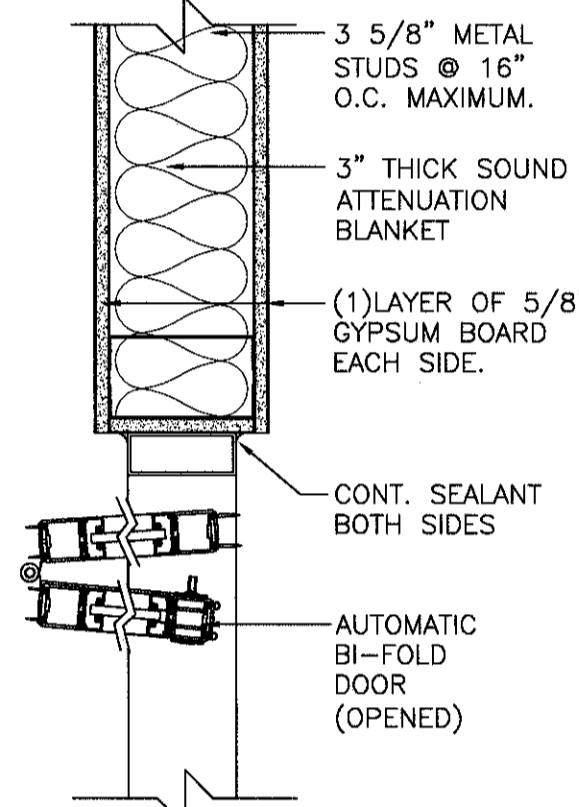
DOOR SILL DETAIL
1/2" - 1'-0"



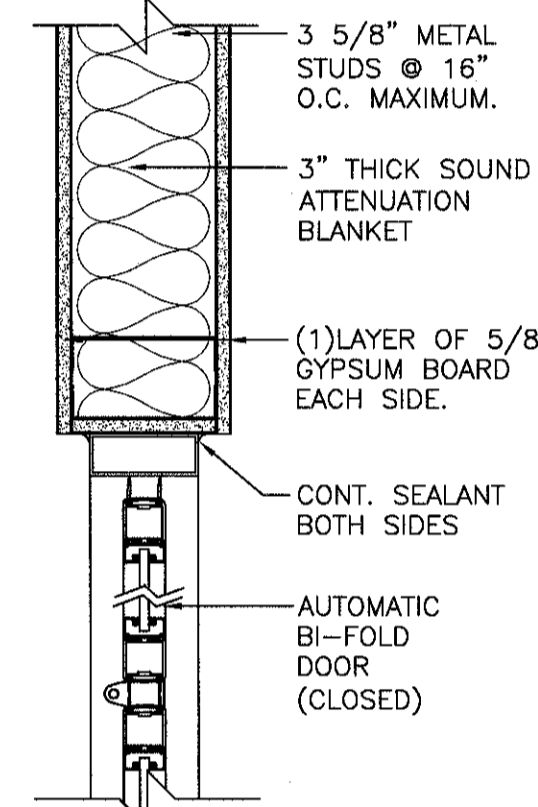
DOOR JAMB DETAIL
1/2" - 1'-0"



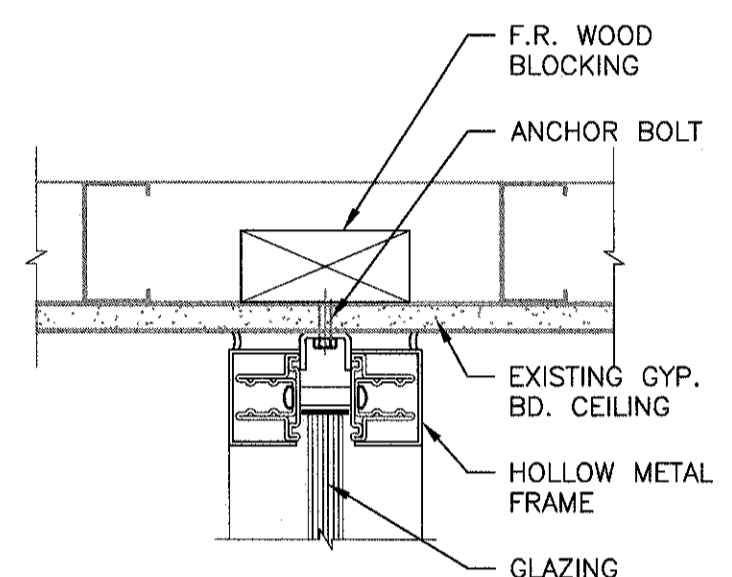
DOOR JAMB DETAIL
1/2" - 1'-0"



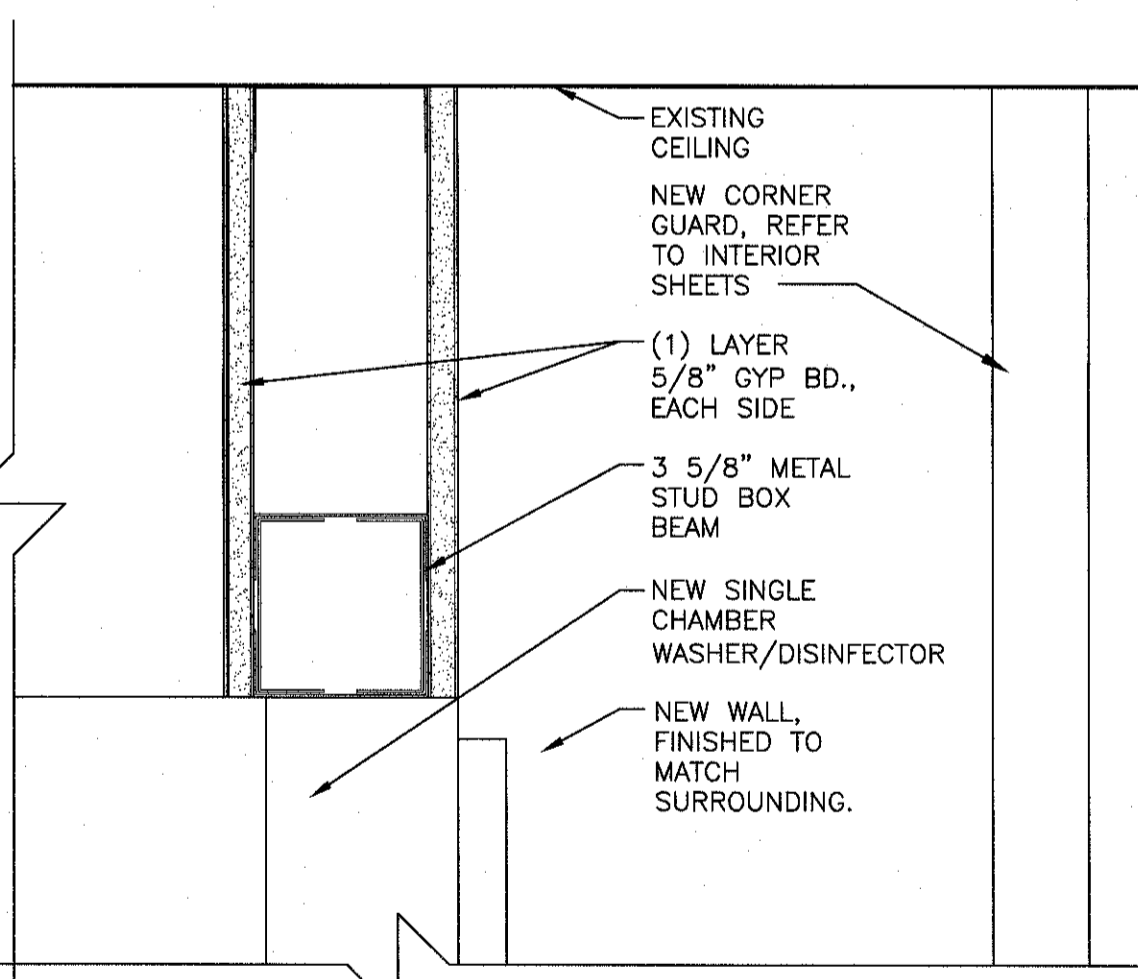
DOOR JAMB DETAIL
1/2" - 1'-0"



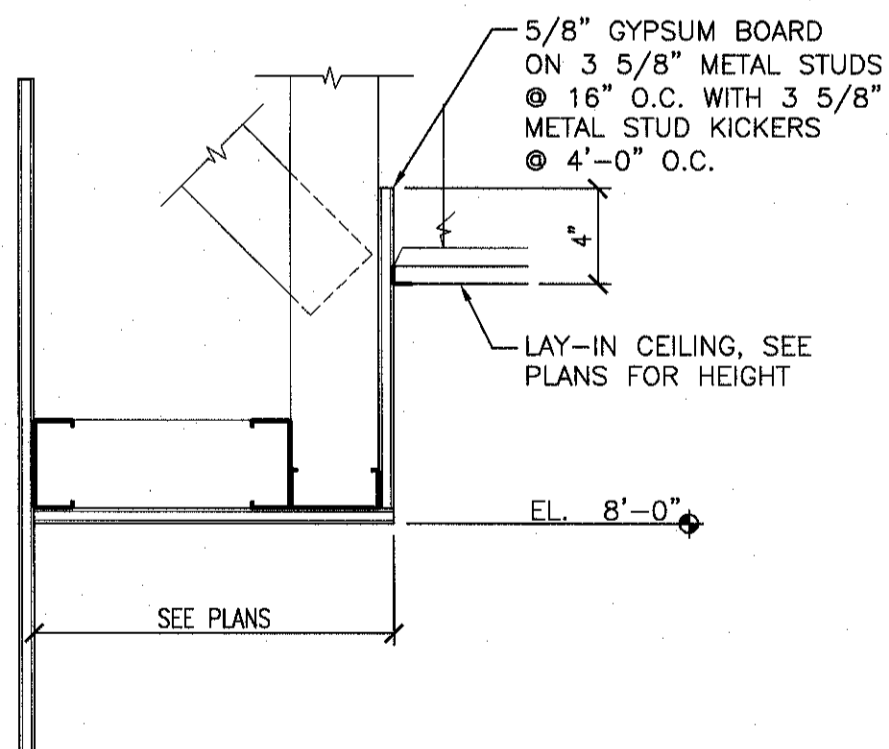
DOOR JAMB DETAIL
1/2" - 1'-0"



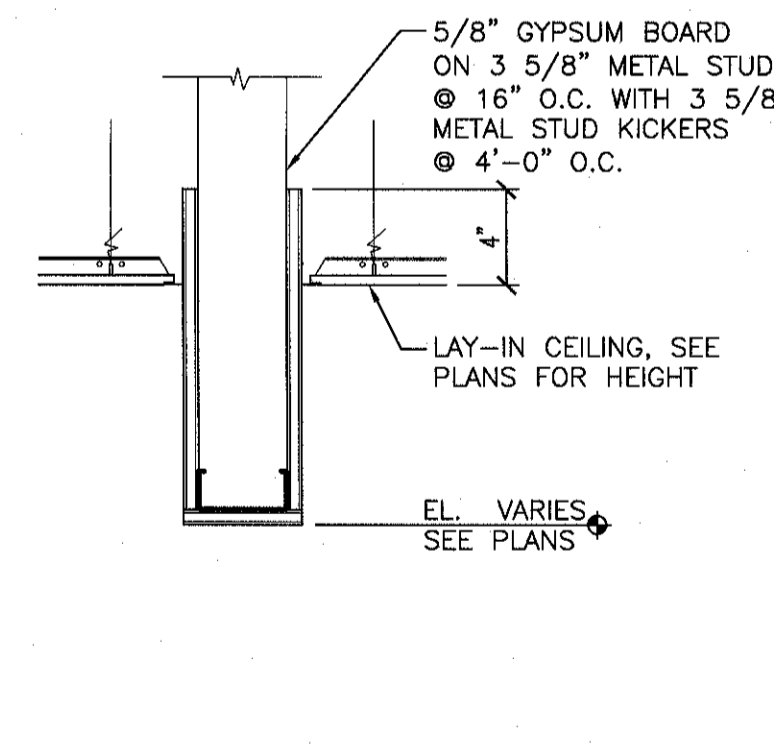
FULL HEIGHT VIEW WINDOW SECTION
3' - 1'-0"



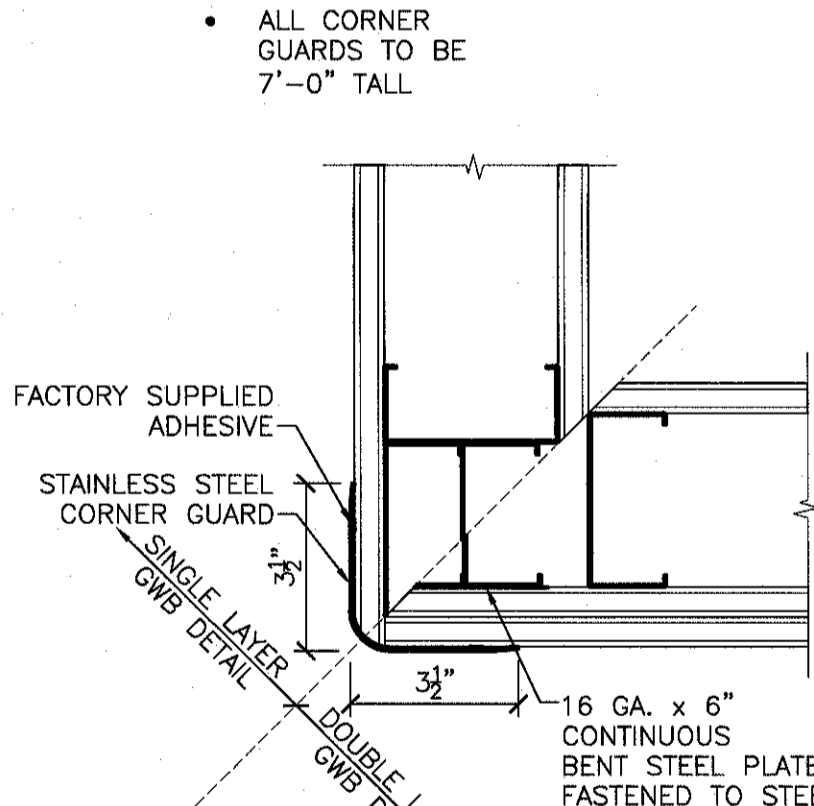
DETAIL
3' - 1'-0"



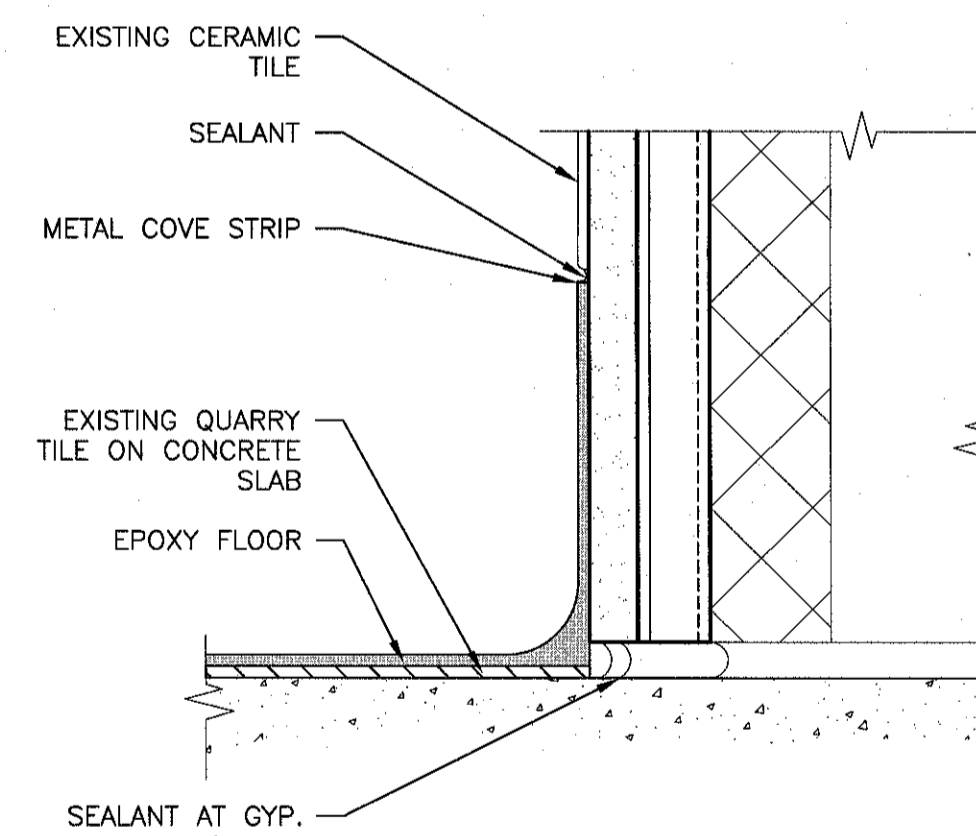
TYPICAL SOFFIT DETAIL
1/2" - 1'-0"



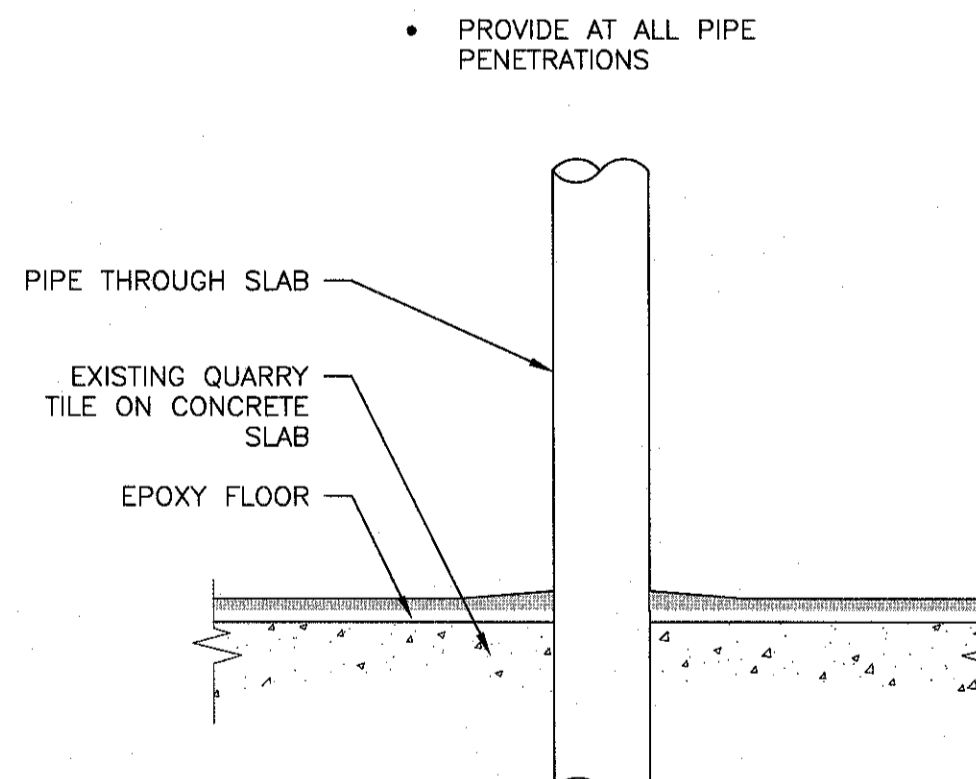
BULKHEAD DETAIL
1/2" - 1'-0"



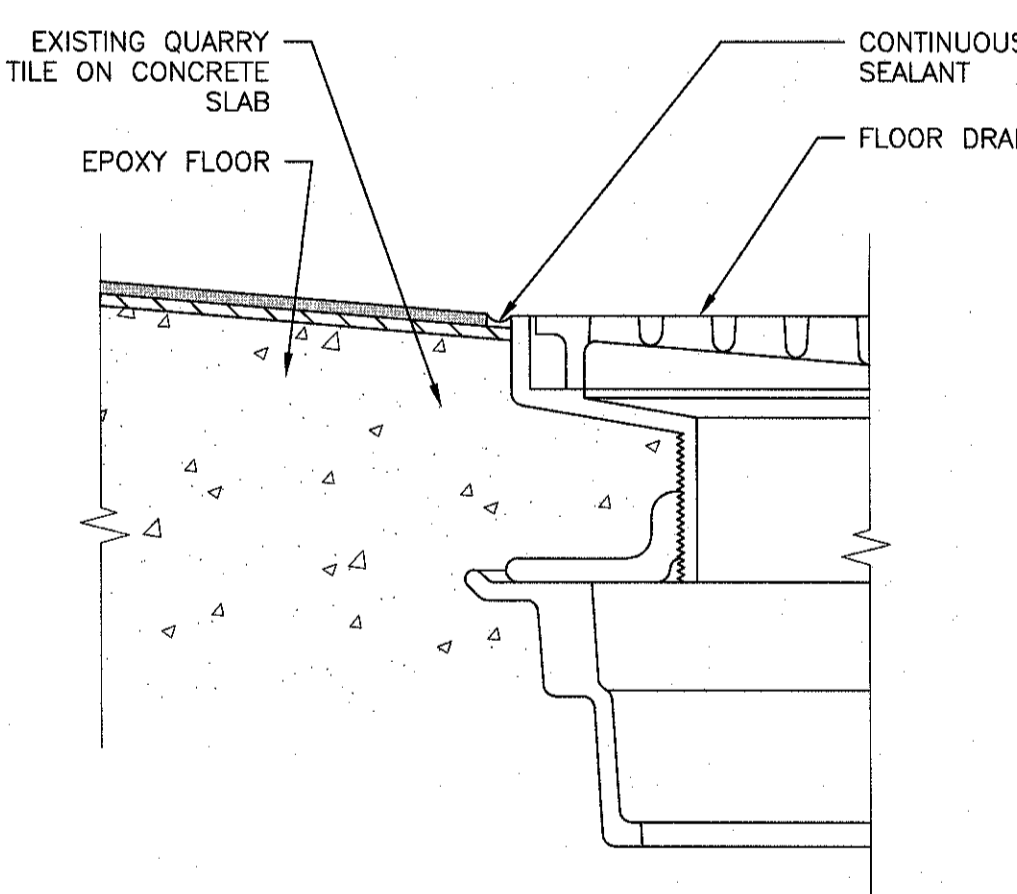
CORNER GUARD DETAIL
3' - 1'-0"



EPOXY COVE BASE DETAIL
6' - 1'-0"



PIPE PENETRATION DETAIL
6' - 1'-0"



FLOOR DRAIN DETAIL
6' - 1'-0"

CONSULTANTS:		ARCHITECT/ENGINEERS:		Drawing Title		Project Title		Project Number		Office of Construction and Facilities Management	
		PARADIGM ENGINEERS AND CONSTRUCTORS		DOOR AND FRAME TYPES AND SCHEDULE, DETAILS AND SECTIONS		RENOVATE STERILE PROCESSING SERVICES		623-14-103		Department of Veterans Affairs	
		200 Envoy Circle #201, Louisville KY 40299 - PH: 502.339.8511 - www.paradigmusa.com		Control Number VA256-14-C-0112		Location JACK C. MONTGOMERY VAMC 101 HONOR HEIGHTS DRIVE, MUSKOGEE, OK		Building Number 1		Drawn BLM	
Revisions				Date 03/10/2015		Checked WRW		Drawing Number AE601			


A vertical scale with labels A, B, C, D, E, and F from top to bottom, with horizontal tick marks.

Architectural floor plan of a building, likely a school or institutional facility, showing various rooms and corridors. The plan includes a grid system with letters (1a, 2a, 3a, 4a, 5a) and numbers (Ba, Ca, Da). Key areas include:

- CLEAN UTILITY ROOM (16B-1)
- SOILED UTILITY (16B-1)
- FLEC (16B-1)
- SERVICE (101)
- URF-1 (EPT-1)
- STAFF TOILET (10B-1)
- CORRIDOR (10B-1)
- OFFICE (10B-1)
- EMPLOYER LOUNGE (10B-1)
- ELEVATOR LOBBY (10B-1)
- STORAGE (10B-1)
- NUTRITION TEACHING (10B-1)
- OFFICE (10B-1)

The plan also shows various doors, windows, and structural elements like columns and beams. A large area is marked "NOT IN CONTRACT".

**Office of
Construction
and Facilities
Management**

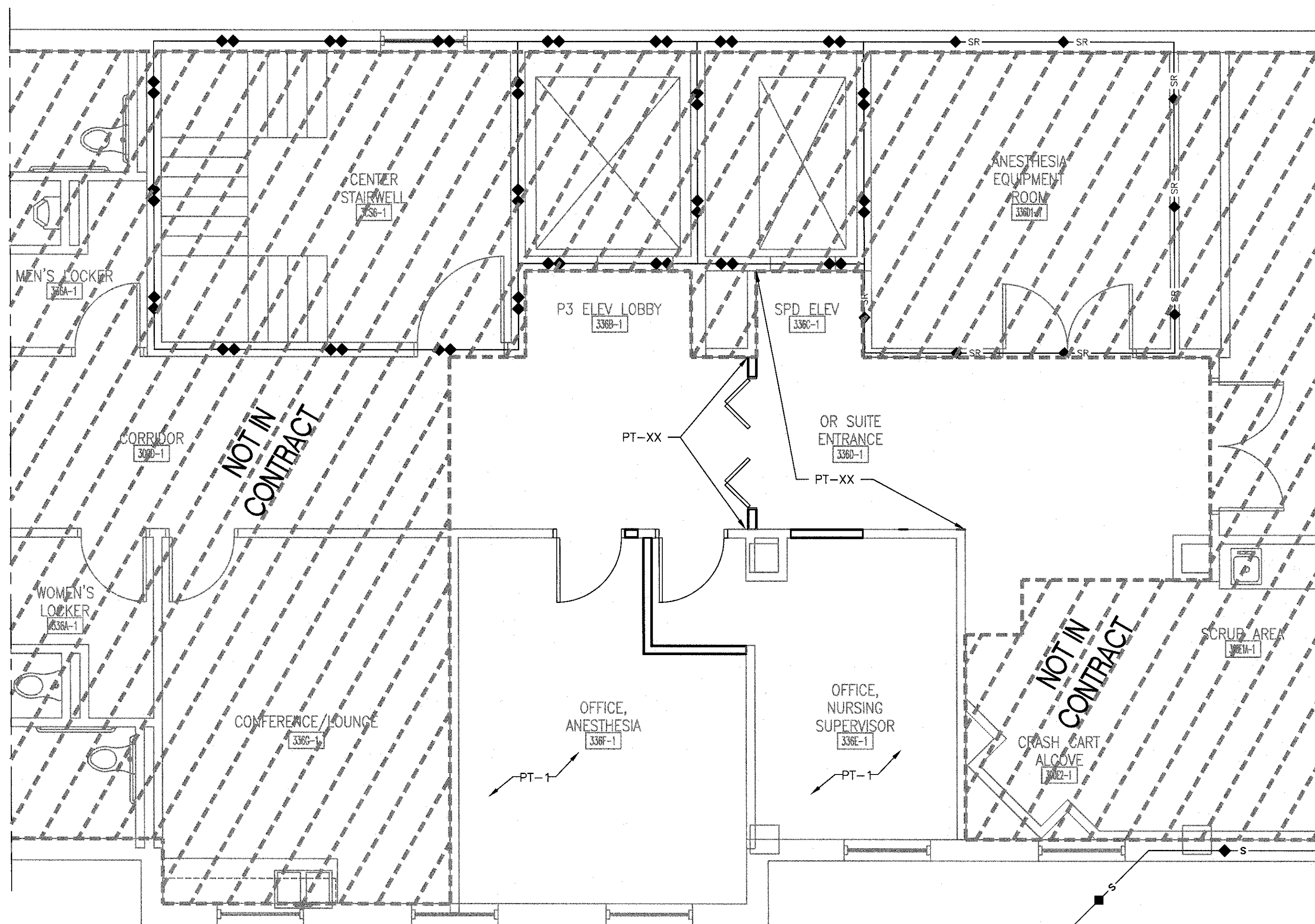
 Department of
Veterans Affairs

[illegible]

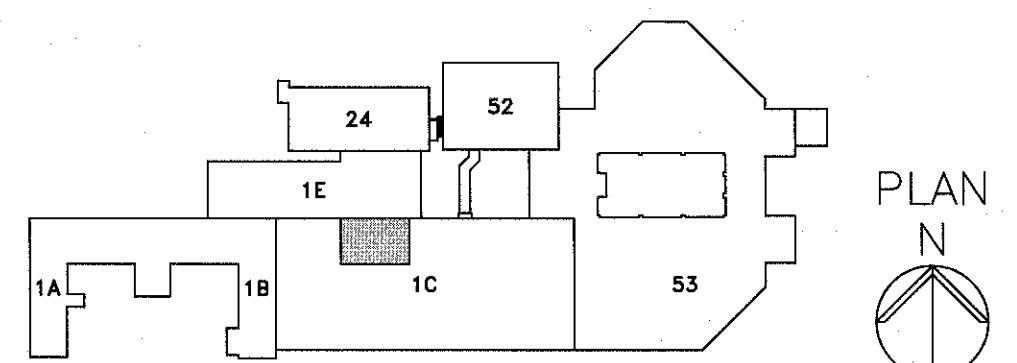
THIRD FLOOR ROOM FINISH SCHEDULE									
ROOM #	ROOM	FLOOR	BASE	NORTH WALL	EAST WALL	SOUTH WALL	WEST WALL	CEILING	COMMENTS
336D-1	OR SUITE ENTRANCE						PT-XX		PATCH AND REPAIR FLOOR AND CEILING FINISHES IN AREA AS NECESSARY
336E-1	OFFICE, NURSING SUPERVISOR		VB-XX	PT-1	PT-1	PT-1	PT-1		PATCH AND REPAIR FLOOR AND CEILING FINISHES IN AREA AS NECESSARY
336F-1	OFFICE, ANESTHESIA		VB-XX	PT-1	PT-1	PT-1	PT-1		PATCH AND REPAIR FLOOR AND CEILING FINISHES IN AREA AS NECESSARY

FINISH LEGEND		
FINISH	FLOORS	
URF-1	URETHANE RESINOUS FLOORING, SOILED UTILITY	STONSHIELD HRI W/ EXTRA COAT OF CE4-CYPRESS
FINISH	WALLS	
PT-1	PAINT(FEILD)	SHERWIN WILLIAMS ACCESSIBLE BEIGE
PT-2	PAINT (DOOR TRIM)	MATCH ADJACENT EXISTING DOORS
EPT-1	EPOXY PAINT (CEILING)	SHERWIN WILLIAMS CEILING FLAT WHITE PAINT
PT-XX	PAINT (PATCH AND REPAIR)	MATCH EXISTING ADJACENT AREAS
VB-XX	VINYL BASE	MATCH EXISTING ADJACENT WALLS
CG-1	CORNER GUARD (STAINLESS STEEL)	CS ACROYVN - CO-8 ADHESIVE MOUNT

- GENERAL INTERIOR FINISH PLAN NOTES**
- A. REFER TO AE601 FOR FINISH DETAILS.
- B. EXISTING CERAMIC TILE WAINSCOT SHALL BE CLEANED AND REGROUTED AS NECESSARY.
- C. URETHANE RESINOUS FLOORING SHALL BE INSTALLED OVER EXISTING QUARRY TILE. FLOORING SHALL BE MECHANICALLY PREPPED PER MANUFACTURERS RECOMMENDATIONS.
- D. INSTALLATION OF NEW FLOORING WILL BE THE FINAL PHASE OF PROJECT AFTER NEW SPD EQUIPMENT IS INSTALLED. FLOORING INSTALL SHALL OCCUR AFTER HOURS AND ON WEEKENDS, COORDINATE WITH COR PRIOR TO SCHEDULING.
- E. URETHANE RESINOUS FLOORING SHALL HAVE 6" INTEGRAL COVE BASE.
- F. FINISHES LISTED IN FINISH LEGEND ARE MANUFACTURER'S PRODUCTS WHICH HAVE BEEN IDENTIFIED AS MEETING THE SALIENT CHARACTERISTICS OF THIS SPECIFICATION. SUCH INFORMATION IS ONLY PROVIDED TO SHOW EXAMPLES OF PRODUCTS WHICH MEET THE SPECIFICATIONS AND DO NOT,IN ANY WAY, LIMIT THE OFFEROR FROM PROVIDING PRODUCTS FROM OTHER MANUFACTURERS WHICH MEET THE SALIENT CHARACTERISTICS AS IDENTIFIED.
- G. SUBMITTALS SHALL BE IN ACCORDANCE WITH SECTION 01 33 23, SHOP DRAWINGS, DATA AND SAMPLES- PROVIDE TWO FINISH SAMPLES FOR COLOR APPROVAL OF MATERIALS AND FINISHES SPECIFIED.
- H. PATCH AND REPAIR FLOOR AND CEILING FINISHES TO MATCH EXISTING IN 336F-1 AND 336E-1.
- I. ALL CORNER GUARDS SHALL BE FULL HEIGHT UNLESS NOTED OTHERWISE.



F3 THIRD FLOOR FINISH PLAN
1/4" = 1'-0"



GENERAL MECHANICAL NOTES

[illegible]F/S

—

T
M
P

ROOM THERMOSTAT/TRANSMITTER - WALL MOUNT

ROOM HUMIDISTAT (MOISTURE)/TRANSMITTER - WALL MOUNT

PRESSURE DIFFERENTIAL INDICATOR/MONITOR - WALL MOUNT

* TYPE NUMBERS REFER TO MANUFACTURER'S STANDARDIZATION SOCIETY
STANDARD PRACTICE SP-58

COORDINATE ALL WORK WITH EXISTING CONDITIONS, ALL OTHER TRADES, AND IN ACCORDANCE WITH ALL STATE, LOCAL AND NATIONAL CODES, AS WELL AS WITH ALL FEDERAL, HEALTHCARE REGULATIONS.

B. CONTRACTOR SHALL BE RESPONSIBLE FOR ALL FEES, PERMITS AND LICENSES FOR THE COMPLETE INSTALLATION OF THEIR WORK.

C. BEFORE ANY WORK IS STARTED, THE CONTRACTOR SHALL MAKE A THOROUGH SURVEY WITH THE COR OF THE SCOPE AREA, AND AREAS WHICH ARE ANY OTHER ROUTES OF ACCESS, AND FURNISH A REPORT. REPORT SHALL BE SIGNED BY BOTH COR AND CONTRACTOR, AND SHALL BE PROVIDED TO THE CONTRACTING OFFICER.

D. ALL NEW HVAC EQUIPMENT AND DDC CONTROLS SHALL BE TIED BACK INTO EXISTING CONTROL SYSTEM AT NEAREST ETHERNET HUB.

E. ALL EXISTING SPRINKLER HEADS, PIPES, ALARMS, ETC. ARE TO REMAIN INTACT FOR USE AFTER RENOVATION. SPRINKLER SYSTEM SHALL REMAIN IN OPERATION THROUGHOUT PERIOD OF WORK. CONTRACTOR SHALL ENSURE THAT NO DAMAGE IS DONE TO EXISTING SPRINKLER SYSTEM – I.E. PROTECTIVE CAGES SHALL BE INSTALLED OVER SPRINKLER HEADS DURING RENOVATION, ETC.

F. CARE SHOULD BE TAKEN BY ALL CONTRACTORS TO AVOID DAMAGING OR DISTURBING EXISTING CONSTRUCTION WHICH IS TO REMAIN. CONTRACTORS SHALL BE RESPONSIBLE FOR MAKING ANY REPAIRS NECESSARY TO RECTIFY DAMAGED AND RESTORE EXISTING CONSTRUCTION TO UNDAMAGED STATE UPON COMPLETION OF WORK AT NO EXPENSE TO OWNER.

G. ALL ELBOWS IN DUCTWORK SHALL BE LONG RADIUS. RECTANGULAR ELBOWS SHALL BE SUPPLIED WITH TURNING VANS.

H. ALL NEW DEVICES, EQUIPMENT, CONTROLS, ETC. (INCLUDING BUT NOT LIMITED TO: VAV'S, COILS, GRILLES, REGISTERS, AND DIFFUSERS, HOT WATER PIPING, ETC.) SHALL BE TESTED AND BALANCED AS PART OF THIS WORK. EXISTING EQUIPMENT TO REMAIN SHALL BE TESTED AND BALANCED AS NOTED ON DRAWINGS.

I. ALL EQUIPMENT, PIPING, THERMOMETERS, GAGES, VALVES, ETC. THAT ARE LOCATED OUTSIDE SHALL BE OF OUTDOOR–USE QUALITY. THE WINTER EXPOSURE AND THE PRESENCE OF ICE DURING PERIODS OF SNOW READERS IT CORROSIVE – CONTRACTOR SHALL SEEK APPROVAL FROM VA ENGINEERING STAFF AND PARADIGM ENGINEERS AND CONSTRUCTORS BEFORE PURCHASING ANY EQUIPMENT.

J. ALL DUCT WORK RUNS SHOWN ARE REPRESENTATIVE ONLY. CONTRACTOR SHALL SUBMIT SHOP DRAWINGS OF HVAC PIPING AND DUCTS COORDINATED WITH EXISTING CONDITIONS IN THE FIELD (EXISTING OR PRE-DEFINED NEW EQUIPMENT) THAT MAKE NECESSARY OFFSETS OF DUCTWORK AND PIPING.

K. PIPING RUNS SHOWN ARE REPRESENTATIVE ONLY. CONTRACTOR SHALL BE RESPONSIBLE FOR ANY CONDITIONS IN THE FIELD (EXISTING OR PRE-DEFINED BY LOCATION OF NEW EQUIPMENT) THAT MAKE NECESSARY ALTERNATE ROUTING OF PIPING.

L. MECHANICAL CONTRACTOR SHALL COORDINATE WITH ELECTRICAL CONTRACTOR TO PROVIDE POWER CONNECTIONS FOR ALL EQUIPMENT.

M. CONTRACTOR SHALL BE RESPONSIBLE FOR REPAIRING (PATCHING, SEALING, FIRE STOPPING) ALL ABANDONED WALL PENETRATIONS AND ANY NEW PENETRATIONS CREATED FOR DUCT, PIPE, AND CONDUIT.

N. CONTRACTOR SHALL BE RESPONSIBLE FOR REPAIRING ANY ARCHITECTURAL WORK CONDITION THEY WERE FOUND. ASSOCIATED CONTROL POINTS FOR DEVICES AND EQUIPMENT SHALL BE DECOMMISSIONED AND REMOVED FROM LON WORKS ENGINEERING CONTROL CENTER COMPLETE.

O. ALL CONTROL DEVICES DEMOLISHED SHALL BE TURNED OVER TO OWNER IN THE CONDITION THEY WERE FOUND. ASSOCIATED CONTROL POINTS FOR DEVICES AND EQUIPMENT SHALL BE DECOMMISSIONED AND REMOVED FROM LON WORKS ENGINEERING CONTROL CENTER COMPLETE.

P. ALL FIRE AND SMOKE DAMPERS SHALL BE SUPPLIED WITH END SWITCHES THAT REPORT BACK TO EXISTING CENTRAL LOCATION TO INDICATE DAMPER POSITION.

Q. ALL CONTROLS COMPONENTS, SWITCHES, CONTROLLERS MOTORIZED DAMPERS VALVES SHALL BE OPERATED AND VISIBLE ON THE EXISTING CONTROLS SYSTEM. ALL DEVIATION SHALL BE EXPLAINED AND PRE-APPROVED BY THE HOSPITAL UTILITIES DEPARTMENT.

R. CONTROL VALVES SHALL BE 0-10 VOLT.

S. CONTROL PANELS SHALL BE CONNECTED TO EMERGENCY POWER.

T. WATER COILS SHALL BE 100% DRAINABLE.

U. CHEMICALLY CLEAN AND FLUSH ALL NEW HVAC WATER LINES PRIOR TO FINAL CONNECTION TO EXISTING SYSTEMS. PROVIDE TAP-INS AND TEMPORARY PUMPS TO FACILITATE CIRCULATION OF CLEANING AGENT. REMOVE TEMPORARY PUMPS ONCE LINES HAVE BEEN TESTED AND APPROVED FOR CLEANLINESS.

V. MAINTAIN COMPLETE ACCESS TO ALL ASSOCIATED HVAC, ELECTRICAL AND PLUMBING CONTROLS, VALVES, SWITCHES, DISCONNECTS, ACCESS DOORS AND ACCESS PANELS. COMPLETED CONSTRUCTION SHALL ALLOW ACCESS TO THESE COMPONENTS FOR USE, MAINTENANCE, REPAIR AND REPLACEMENT.

W. DOCUMENTATION: CONTRACTOR SHALL PROVIDE A MINIMUM OF (3) HARD COPIES OF TECHNICAL MANUALS, AS-BUILT DRAWINGS, AND MANUFACTURER'S OPERATION AND MAINTENANCE MANUALS. ALSO PROVIDE SAME INFORMATION ON COMPACT DISK.

X. ALL PIPING ABOVE GRADE SHALL HAVE AN EXPOSED TAG TO IDENTIFY THE PIPE, SIZE OF EQUIPMENT SHALL BE INSTALLED AS FREE FROM NOISE AND VIBRATION AS POSSIBLE.

Y. EACH PIECE OF EQUIPMENT SHALL BE INSTALLED AS FREE FROM NOISE AND VIBRATION AS POSSIBLE.

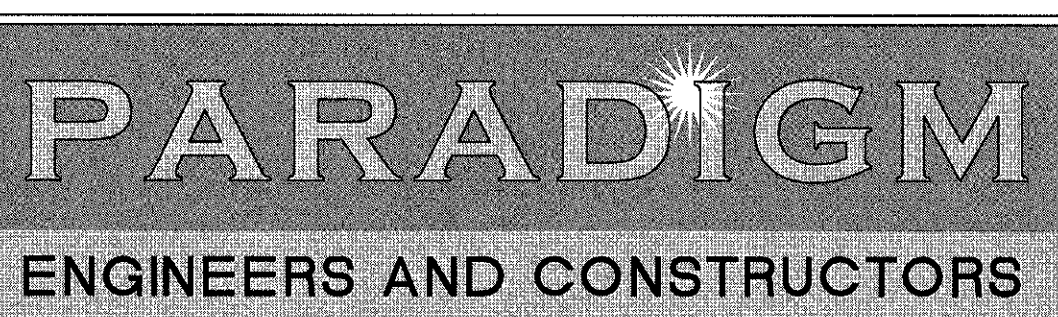
Z. ALL WORK IS TO OCCUR IN OCCUPIED BUILDING SPACES, WITH PATIENTS AND STAFF NEARBY. CONTRACTOR IS TO COORDINATE A WORK SCHEDULE WITH THE DEMOLITION OF EXISTING UTILITIES, TO AVOID INTERRUPTION OF UTILITIES IN ALL ADJACENT AREAS.


AA. THE MECHANICAL CONTRACTOR SHALL REFERENCE DRAWINGS G1102 TO G1110 FOR PHASING REQUIREMENTS OF PROJECT. PHASING SHALL BE INCLUDED IN BASE BID.

AB. THE MECHANICAL CONTRACTOR SHALL ATTEND A PRE-BID WALK THROUGH AT THE SITE, ARRANGED BY THE COR, TO INSPECT THE FACILITY AND SCOPE AREA. CONTRACTOR SHALL EVALUATE THE FULL SCOPE OF WORK AND WORKING CONDITIONS. CONTRACTOR IS RESPONSIBLE FOR THE INCLUSION OF ALL RELEVANT INFORMATION IN THE BID. CONTRACTOR SHALL INDICATE MODIFICATION WHETHER OR NOT SUCH WORK IS INDICATED ON THE DRAWINGS. DEMOLITION SHALL GENERALLY BE ARRANGED TO AGREE WITH THE ACCOMPLISHMENT OF WORK UNDER THE VARIOUS PHASES, AND IN COORDINATION WITH OTHER TRADES. CONSULT WITH THE COR AND SEE THE ARCHITECTURAL DRAWINGS FOR OTHER REQUIREMENTS.

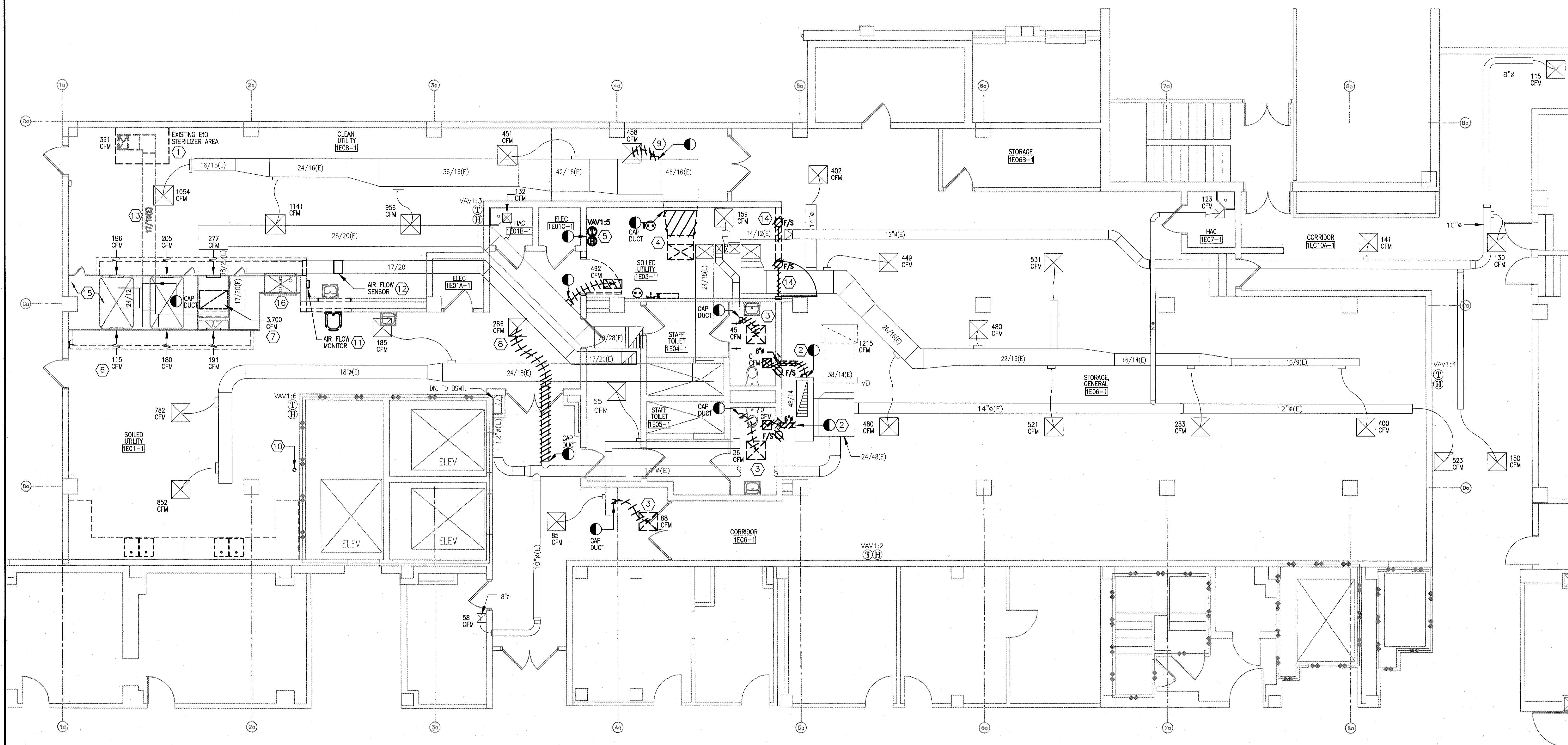
 Department of
Veterans Affairs

ARCHITECT/ENGINEERS:



Drawing Title MECHANICAL ABBREVIATIONS, SYMBOLS AND GENERAL NOTES		Project Title RENOVATE STERILE PROCESSING SERVICES			Project Number 623-14-103		Office of Construction and Facilities Management
Approved Project Director		Control Number VA256-14-C-0112		Building Number 1			
				Drawing Number M-001			
PO Number C40110		Location JACK C. MONTGOMERY VAMC 105 HONOR HEIGHTS DRIVE, MUSKOGEE, OK			 Department of Veterans Affairs		
		Date 3/10/2015	Checked KLP	Drawn JDF			

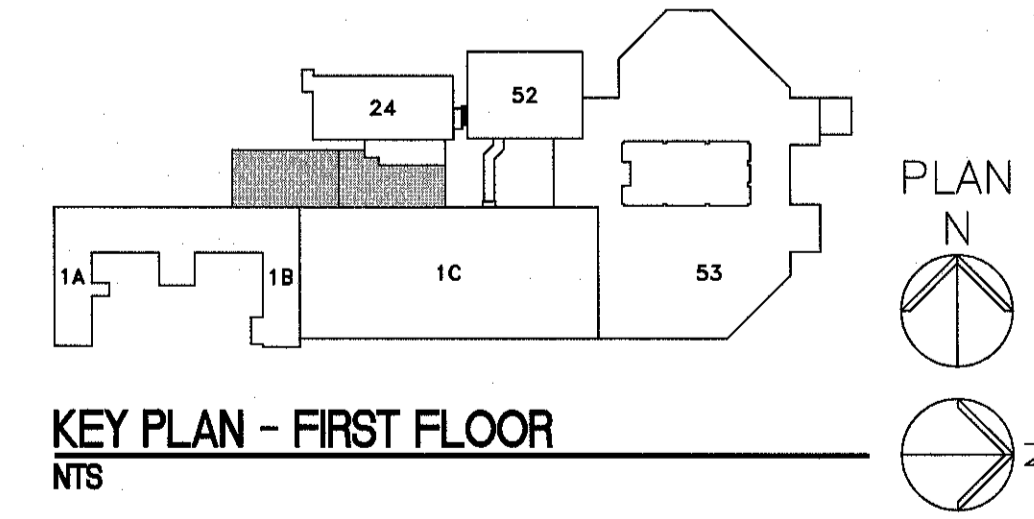
three inches = one foot
one and one half inches = one foot
one inch = one foot
one quarter inch = one foot
three eighths inch = one foot
one half inch = one foot
one eighth inch = one foot
one quarter inch = one foot
one eighth inch = one foot



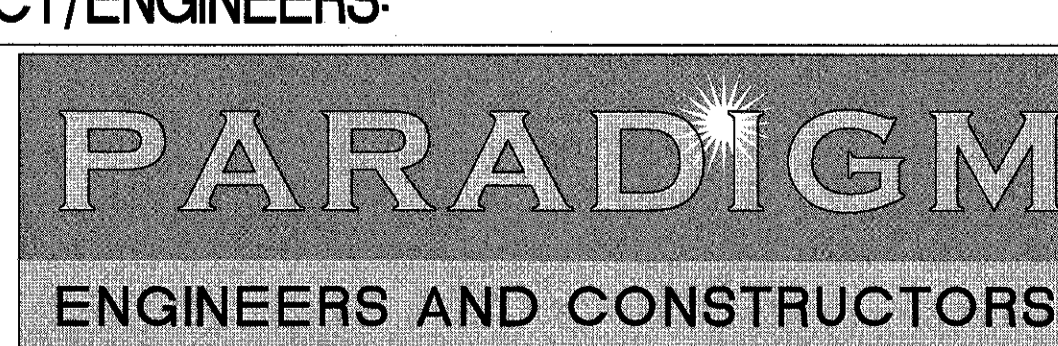

1 1ST FLOOR PLAN
3/16" = 1'-0"

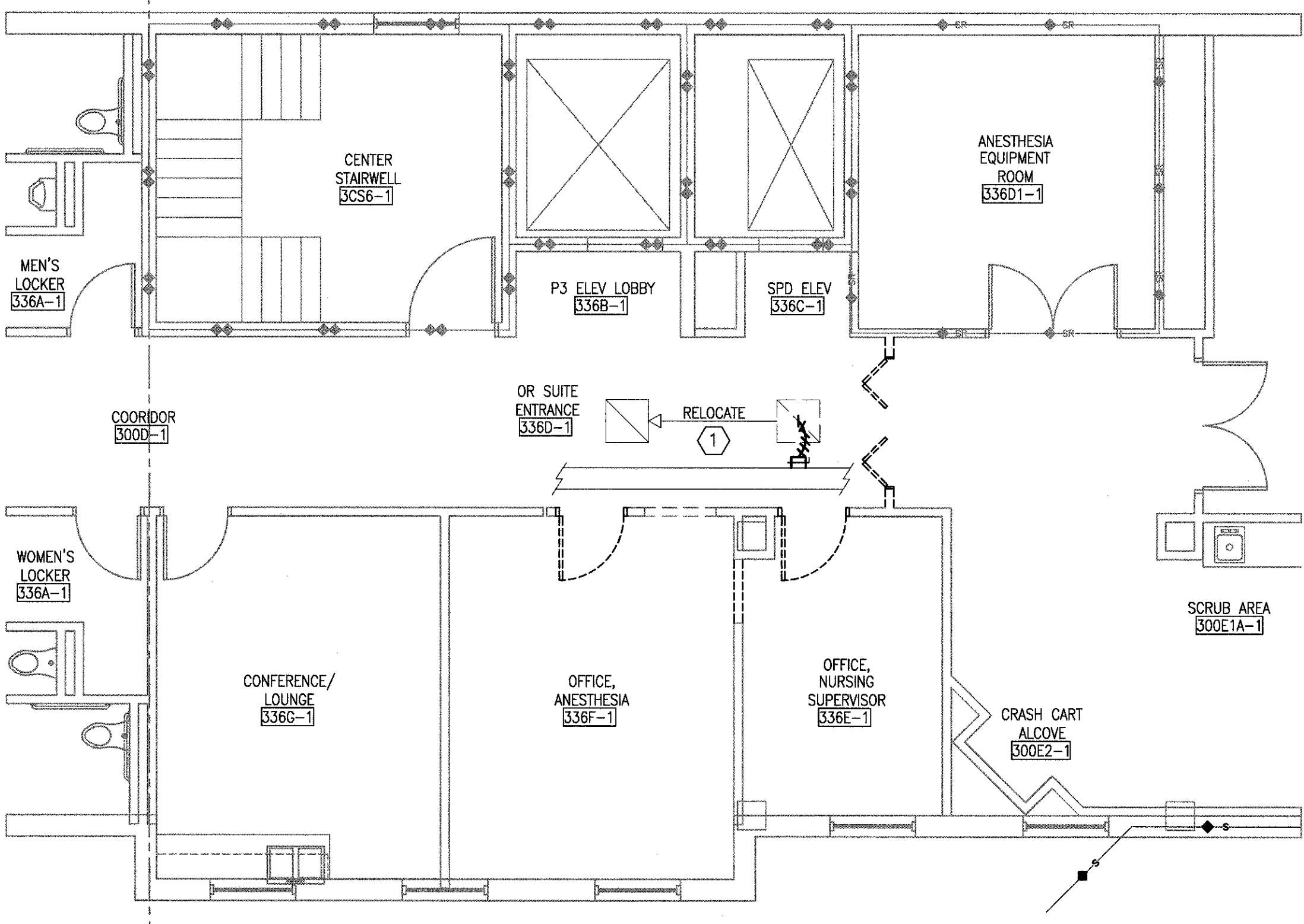
- NOTES**
- REFER TO DRAWING M-001 FOR LEGEND, ABBREVIATIONS, AND GENERAL NOTES RELATED TO THIS SHEET.
 - COORDINATE ALL WORK WITH DRAWINGS FROM OTHER TRADES PRIOR TO DEMOLITION. NOTIFY THE G.C./COR WITH ANY CONFLICTS.
 - ALL EXISTING PIPING, DUCTWORK, SPRINKLERS, CONDUIT, LIGHTING OR OTHER CONSTRUCTION SHALL BE RELOCATED AS NECESSARY FOR ALL DEMOLITION AND INSTALLATION WORK.
 - VOLUMETRIC FLOW RATE (CFM) LISTED NEXT TO THE AIR DEVICE IS FROM A RECENT TEST AND BALANCE REPORT. SEE DRAWING MH101 FOR NEW FLOW RATE.
 - CONTRACTOR TO MINIMIZE CEILING DISTURBANCE IN ALL AREAS. GENERAL CONTRACTOR TO SUPPLY AND INSTALL 24"x24" ACCESS PANELS AS NECESSARY TO COMPLETE THE MECHANICAL WORK. COORDINATE NEW ACCESS PANEL LOCATIONS WITH GC/COR. ACCESS TO THE CEILING AREA MAY ALSO BE AVAILABLE VIA THE EXISTING LIGHT FIXTURES. CONSULT WITH THE GC/COR.
 - COORDINATE ALL WORK WITH THE VA WITH ACCESS AND TO MAINTAIN MECHANICAL SERVICES TO CRITICAL AREAS. EXPECT MOST OF THE WORK TO OCCUR AFTER NORMAL WORKING HOURS, OR OVER WEEKENDS AND HOLIDAYS, AND SERVICES RESTORED BY THE NEXT WORK DAY.

- KEY NOTES**
- DEMO AND CAP THE EXISTING EIO STERILIZER DUCT BELOW THE CEILING IN THIS AREA (EIO STERILIZER HAS BEEN PREVIOUSLY REMOVED). CUT DUCT BACK AS CLOSE TO CEILING LINE AS POSSIBLE. SIMILAR TO THE EXISTING DUCT DROPS THAT HAVE BEEN CAPPED.
 - DEMO THE EXISTING EXHAUST AIR DEVICE AND DUCTWORK AS SHOWN. REMOVE THE EXISTING FIRE/SMOKE DAMPER.
 - DEMO AND CAP THE EXISTING SUPPLY AIR DEVICE AND DUCTWORK AS SHOWN.
 - DEMO THE EXISTING SUPPLY DUCTWORK AS SHOWN. DUCT ORIGINATES IN THE MECHANICAL ROOM ABOVE. CAP DUCT IN THE SOILED UTILITY ROOM AS SHOWN. SEE DRAWING MD103 AND DRAWINGS MH101 AND MH103 FOR NEW WORK.
 - MOVE THE EXISTING THERMOSTAT AND HUMIDISTAT TO THE NEW CLEAN CARTS ROOM 102. SEE DRAWING MH101.
 - DEMO THE EXISTING 18/6 EXHAUST GRILLE LOCATED IN THE SIDE OF THE HOOD (SOILED UTILITY ROOM ONLY). TYPICAL OF 3. GRILLES TO BE REPLACED BY NEW 18/10 STAINLESS STEEL GRILLES. SEE DRAWING MH101.
 - EXISTING DUCT DROP WITH EXHAUST GRILLE OPEN TO THE PLENUM. DEMO EXISTING EXHAUST GRILLE. MODIFY DUCTWORK TO ACCEPT NEW EXHAUST GRILLE. SEE DRAWING MH101 FOR NEW WORK AND MH601 FOR AIR DEVICE SCHEDULE.
 - DEMO AND CAP THE EXISTING EXHAUST DUCT AS SHOWN. AIR DEVICE TO REMAIN. SEE DRAWING MH101 FOR NEW WORK.
 - DEMO THE EXISTING SUPPLY DUCT AS SHOWN. AIR DEVICE TO REMAIN. SEE DRAWING MH101 FOR NEW WORK.
 - EXISTING 4" LAUNDRY VENT DUCT BELOW CEILING TO REMAIN.
 - EXISTING AIR FLOW ALARM PANEL/MONITOR TO BE DISABLED AND REMOVED.
 - EXISTING AIR FLOW SENSOR TO BE DISABLED AND REMOVED COMPLETE.
 - TO MINIMIZE CEILING DISTURBANCE, EXISTING 17/10 EXHAUST DUCT TO BE ABANDONED IN PLACE. CAP DUCT IN THE EQUIPMENT HOOD AREA AS SHOWN.
 - DEMO THE EXISTING COMBINATION FIRE/SMOKE DAMPER AND PNEUMATIC LINES COMPLETE. DEMO PNEUMATIC LINES BACK TO SOURCE. CONSULT WITH THE COR. EXISTING SUPPLY DUCT TO REMAIN.
 - EXISTING STERIS AUTOCLAVE/STERILIZER MACHINES AND PASS-THROUGH.
 - EXISTING STERIS RELIANCE 444 UTENSIL WASHER.



FULLY SPRINKLED
BID DOCUMENTS
FOR CONSTRUCTION

CONSULTANTS:		ARCHITECT/ENGINEERS:		Drawing Title		Project Title		Project Number		Office of Construction and Facilities Management	
				MECHANICAL HVAC DEMOLITION PLAN - FIRST FLOOR		RENOVATE STERILE PROCESSING SERVICES		623-14-103			
				Approved Project Director		Location JACK C. MONTGOMERY VAMC 101 HONOR HEIGHTS DRIVE, MUSKOGEE, OK		Building Number			
				Control Number VA256-14-C-0112		Date 3/10/2015		Drawing Number MD101			
Revisions				PO Number C40110		Checked KLP		Drawn JDF			
Date											

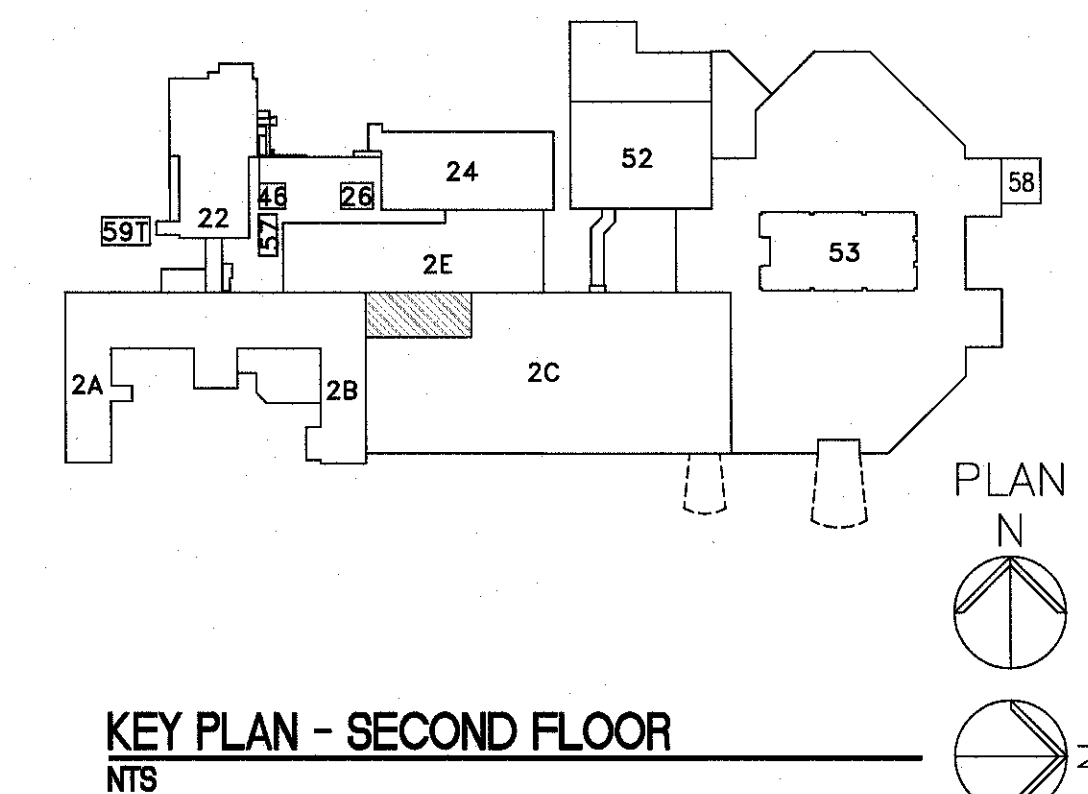


1 PARTIAL 3RD FLOOR PLAN





- A. REFER TO DRAWING M-001 FOR LEGEND, ABBREVIATIONS, AND GENERAL NOTES RELATED TO THIS SHEET.
- B. COORDINATE ALL WORK WITH DRAWINGS FROM OTHER TRADES PRIOR TO DEMOLITION. NOTIFY THE G.C./COR WITH ANY CONFLICTS.
- C. ALL EXISTING PIPING, DUCTWORK, SPRINKLERS, CONDUIT, LIGHTING OR OTHER CONSTRUCTION SHALL BE RELOCATED AS NECESSARY FOR ALL DEMOLITION AND INSTALLATION WORK.
- D. COORDINATE ALL WORK WITH THE VA FOR ACCESS AND TO MAINTAIN MECHANICAL SERVICES TO CRITICAL AREAS. EXPECT MOST OF THE WORK TO OCCUR AFTER NORMAL WORKING HOURS, OR OVER WEEKENDS AND HOLIDAYS, AND SERVICES RESTORED BY THE NEXT WORK DAY.

KEY NOTES 

1. RELOCATE EXISTING EXHAUST/RETURN AIR DEVICE. SEE DRAWING MH102.



FULLY SPRINKLED
BID DOCUMENTS
FOR CONSTRUCTION

CONSULTANTS: 		 		ARCHITECT/ENGINEERS:  200 Envoy Circle #201, Louisville KY 40299 - PH: 502.339.8511 - www.paradigmusa.com		Drawing Title MECHANICAL HVAC DEMOLITION PLAN - PARTIAL 3RD FLOOR PLAN		Project Title RENOVATE STERILE PROCESSING SERVICES		Project Number 623-14-103		Building Number 1		Office of Construction and Facilities Management	
Approved Project Director 		Control Number VA256-14-C-0112		Location JACK C. MONTGOMERY VAMC 101 HONOR HEIGHTS DRIVE, MUSKOGEE, OK		Drawing Number MD102		Date 3/10/2015		Checked KLP		Drawn JDF			
Revisions:		Date		PO Number C40110											