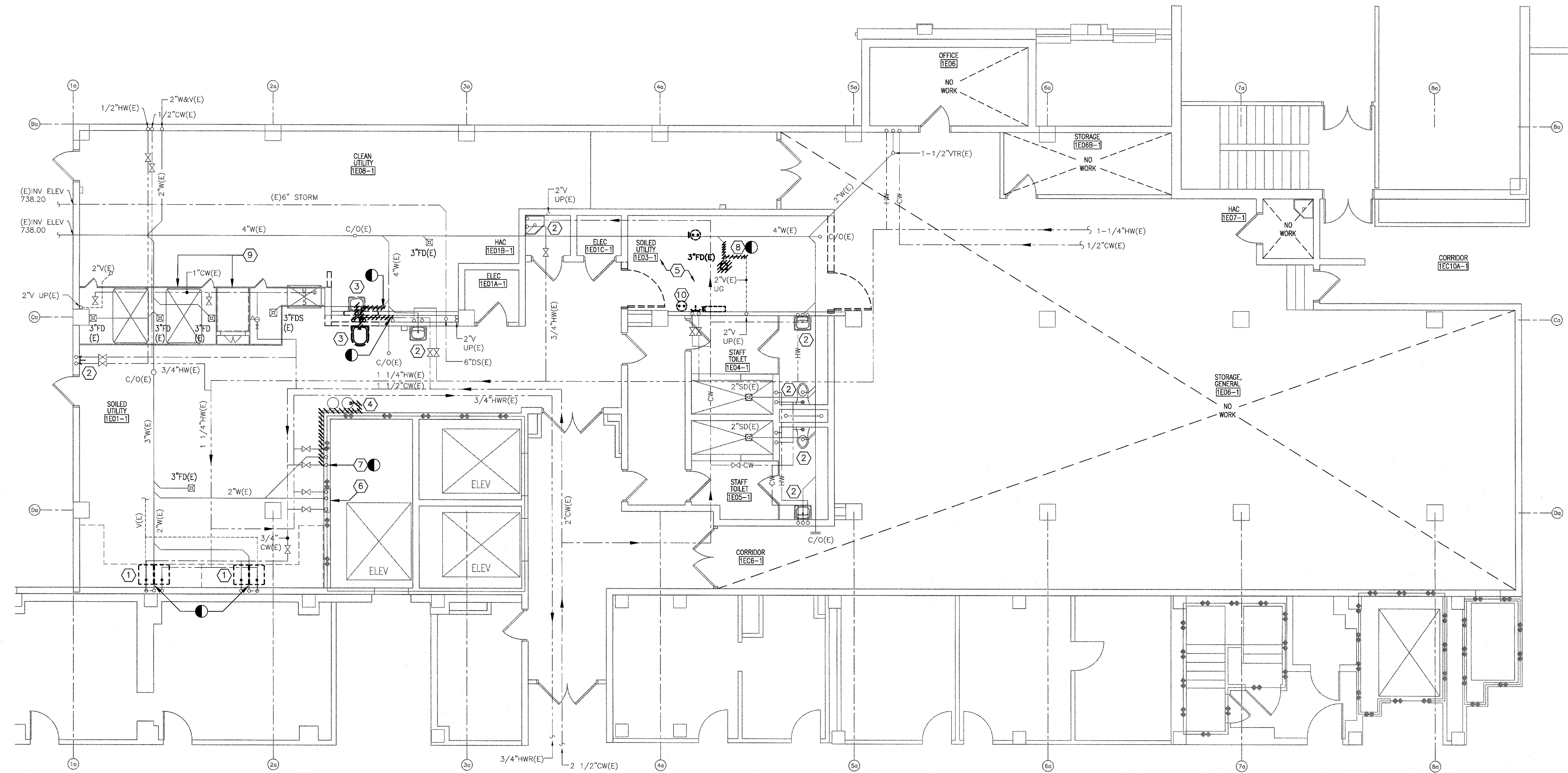


three inches = one foot
one and one half inches = one foot
one inch = one foot
three quarters inch = one foot
one half inch = one foot
three eighths inch = one foot
one quarter inch = one foot
one eighth inch = one foot



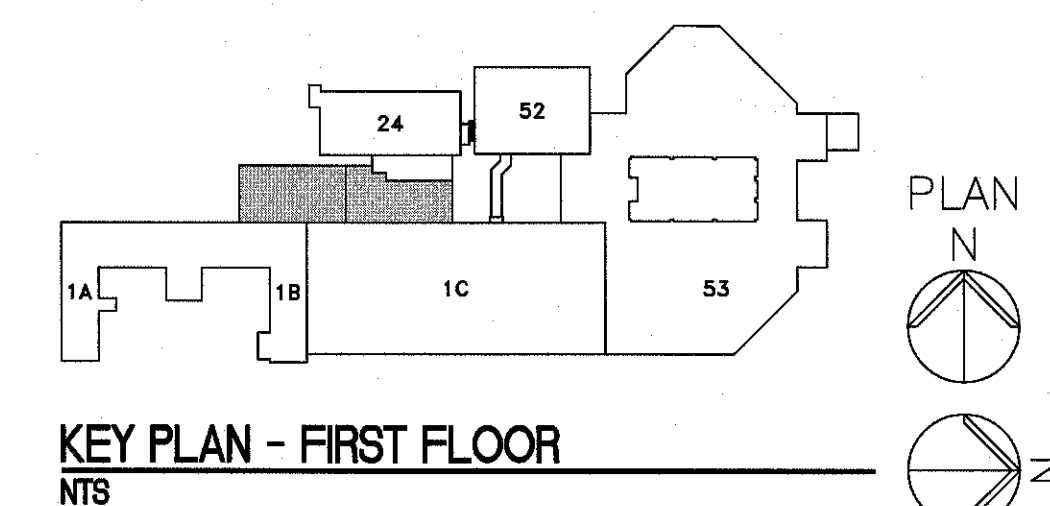
1 1ST FLOOR PLAN
3/16\"/>

NOTES

- REFER TO DRAWING P-001 FOR LEGEND, ABBREVIATIONS, AND GENERAL NOTES RELATED TO THIS SHEET.
- COORDINATE ALL WORK WITH DRAWINGS FROM OTHER TRADES PRIOR TO DEMOLITION. NOTIFY THE G.C./COR WITH ANY CONFLICTS.
- ALL EXISTING PIPING, DUCTWORK, SPRINKLERS, CONDUIT, LIGHTING OR OTHER CONSTRUCTION SHALL BE RELOCATED AS NECESSARY FOR ALL DEMOLITION AND INSTALLATION WORK.
- CONTRACTOR TO MINIMIZE CEILING DISTURBANCE IN ALL AREAS. GENERAL CONTRACTOR TO SUPPLY AND INSTALL 24"x24" ACCESS PANELS AS NECESSARY TO COMPLETE PLUMBING WORK. COORDINATE NEW ACCESS PANELS LOCATIONS WITH THE GC/COR. ACCESS TO CEILING AREA MAY ALSO BE AVAILABLE VIA THE EXISTING LIGHT FIXTURES. CONSULT WITH THE GC/COR.
- COORDINATE ALL WORK WITH THE VA FOR ACCESS TO MAINTAIN PLUMBING SERVICES TO CRITICAL AREAS. EXPECT MOST OF THE WORK TO OCCUR AFTER NORMAL WORKING HOURS AND SERVICES RESTORED BY THE NEXT WORK DAY.

KEY NOTES

- DEMO THE EXISTING DECONTAMINATION SINK. DISCONNECT THE DOMESTIC HOT AND COLD WATER PIPES, AIR LINE, WASTE PIPE, AND DE-IONIZED WATER LINE. CONTRACTOR SHALL PREPARE THE EXISTING UTILITIES FOR NEW SINKS. SEE DRAWINGS PP101 AND PP102 FOR NEW WORK.
- EXISTING PLUMBING FIXTURE TO REMAIN.
- EXISTING PLUMBING FIXTURE TO BE RELOCATED. DEMO AND CAP THE EXISTING SANITARY/VENT PIPES AND DOMESTIC WATER PIPING TO FACILITATE THE INSTALLATION OF THE NEW STERIS VISION WASHER. SEE DRAWING PS101 AND PP101 FOR NEW WORK AND NEW FIXTURE LOCATION.
- EXISTING DE-IONIZED WATER TANKS TO REMAIN. SEE DRAWING PP102 FOR NEW WORK.
- IN THE SOILED UTILITY ROOM, DEMO THE EXISTING HOSE BIBB/COMBINATION FAUCET, EMERGENCY SHOWER, STEAM GUN, AND ASSOCIATED PIPING COMPLETE. DEMO PIPES BACK TO NEAREST SHUT-OFF OR MAIN TO FACILITATE THE INSTALLATION OF THE NEW STERIS CART WASHER. COORDINATE WORK. DEMO THE EXISTING COMPRESSED AIR NOZZLE/OUTLET AND ASSOCIATED PIPING COMPLETE. DEMO PIPES BACK TO THE COMPRESSOR IN THE MECHANICAL ROOM ABOVE.
- EXISTING WASHER WALL BOX TO REMAIN.
- DEMO AND CAP THE EXISTING DOMESTIC WATER SUPPLY TO THE DE-IONIZED TANKS COMPLETE. INCLUDING PRV, PRESSURE GAUGES, FILTER AND HOUSING. WATER SUPPLY ENTERS THE SPACE AT THE FLOOR.
- DEMO EXISTING FLOOR DRAIN, AND CORRESPONDING WASTE/VENT PIPE AS SHOWN. REMOVE AND CAP PIPE TO FACILITATE THE INSTALLATION OF THE NEW STERIS RELIANCE 1227 CART WASHER AND PIT. CONSULT WITH STERIS, COORDINATE WORK. SEE DRAWING PS101 FOR NEW WORK IN THIS AREA.
- CONTRACTOR TO RE-ROUTE COMPRESSED AIR PIPE AND WATER PIPE WITHIN THE HOOD AREA TO FACILITATE THE INSTALLATION OF NEW SHEET METAL BOX AND DUCTWORK. SEE DRAWING MH101. FIELD VERIFY. COORDINATE WORK WITH MECHANICAL CONTRACTOR.
- EMERGENCY EYE-WASH STATION TO BE RELOCATED. SEE DRAWING PP101 FOR NEW LOCATION. DEMO PIPES BACK TO NEAREST SHUT-OFF OR MAIN TO FACILITATE THE INSTALLATION OF THE NEW STERIS CART WASHER.



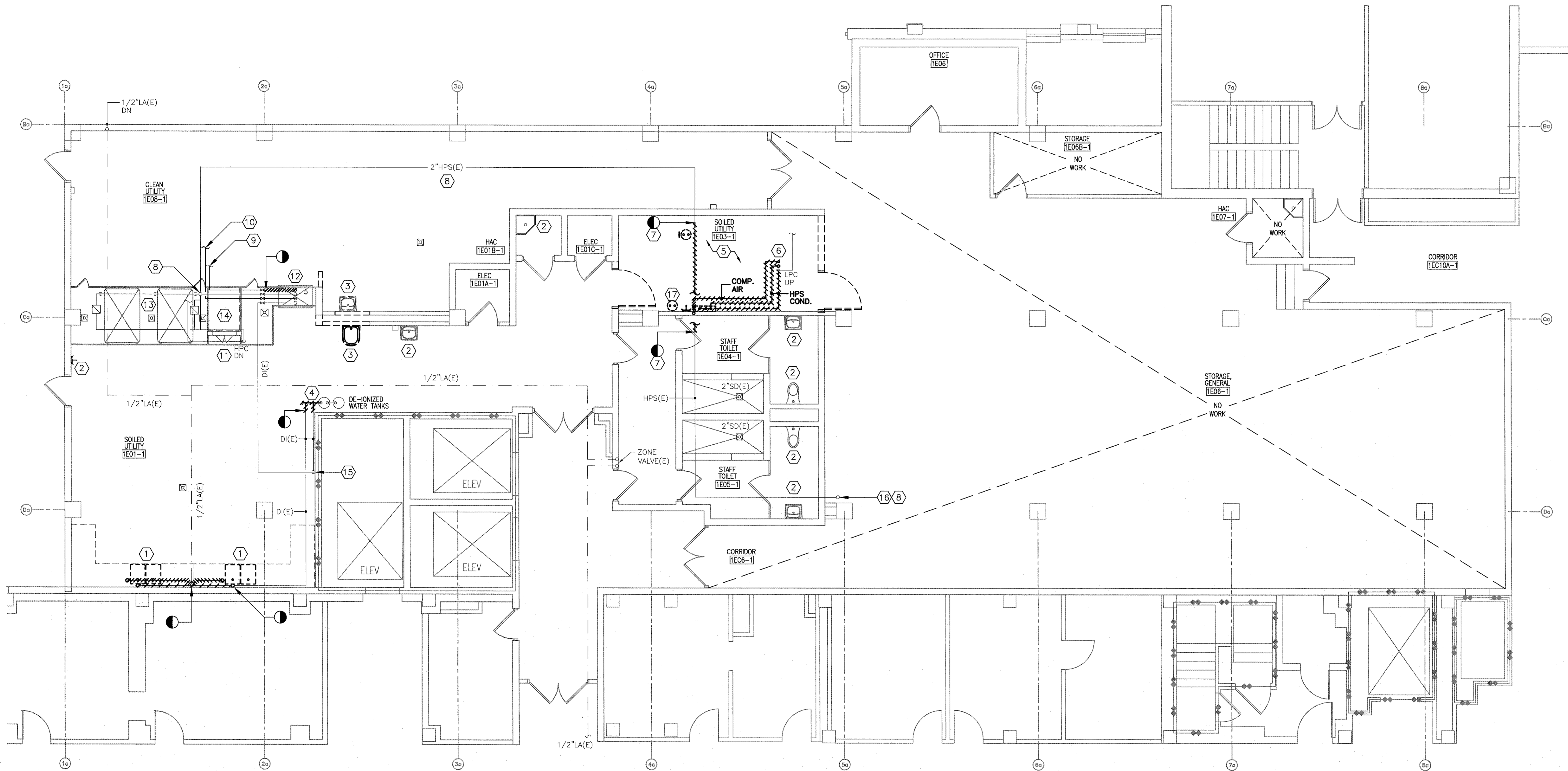
FULLY SPRINKLED
BID DOCUMENTS
FOR CONSTRUCTION

Office of
Construction
and Facilities
Management



		CONSULTANTS:			ARCHITECT/ENGINEERS:		Drawing Title PLUMBING DOMESTIC WATER, SANITARY AND VENT DEMOLITION PLAN - FIRST FLOOR		Project Title RENOVATE STERILE PROCESSING SERVICES		Project Number 623-14-103		Office of Construction and Facilities Management
							Approved Project Director		Control Number VA256-14-C-0112		Building Number -		
Revisions		Date		200 Envoy Circle #201, Louisville KY 40299 - PH: 502.339.8511 - www.paradigmusa.com		PO Number C40110		Location JACK C. MONTGOMERY VAMC 101 HONOR HEIGHTS DRIVE, MUSKOGEE, OK		Drawing Number PD101			
						Date 3/10/2015		Checked KLP		Drawn JDF			

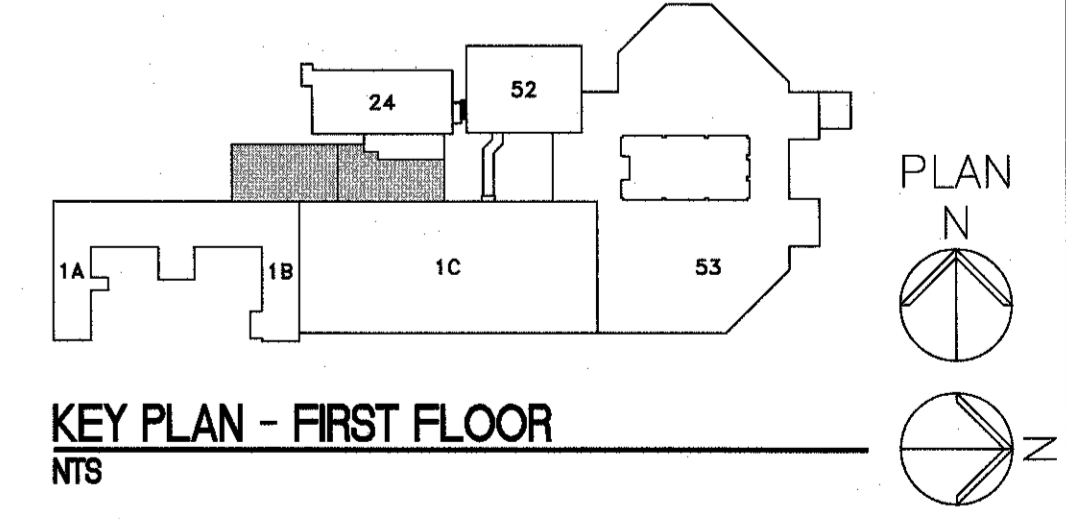
three inches = one foot
one and one half inches = one foot
one inch = one foot
three quarters inch = one foot
one half inch = one foot
three eighths inch = one foot
one quarter inch = one foot
one eighth inch = one foot



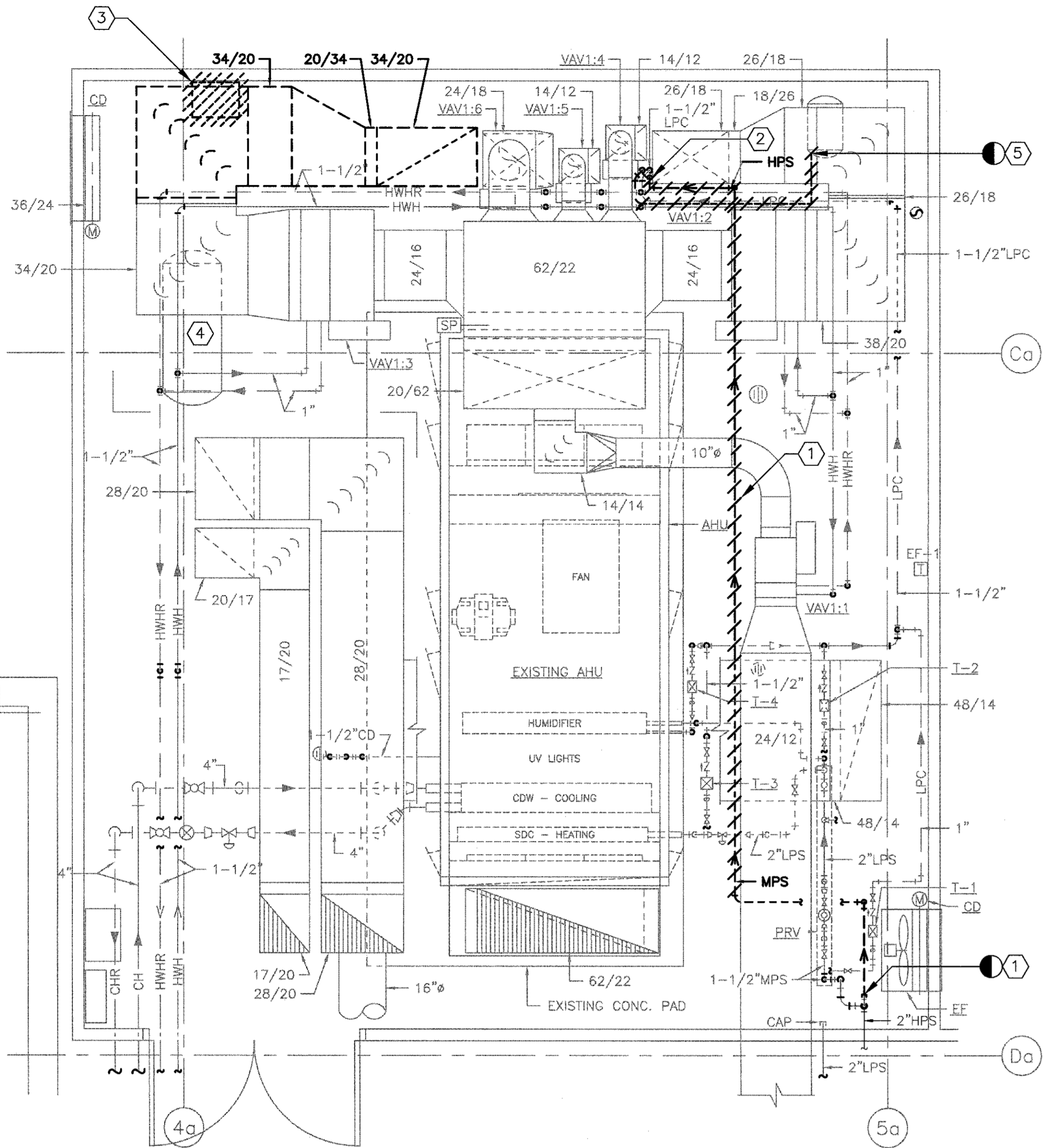
1 1ST FLOOR PLAN
3/16" = 1'-0"

- NOTES**
- A. REFER TO DRAWING P-001 FOR LEGEND, ABBREVIATIONS, AND GENERAL NOTES RELATED TO THIS SHEET.
 - B. COORDINATE ALL WORK WITH DRAWINGS FROM OTHER TRADES PRIOR TO DEMOLITION. NOTIFY THE G.C./COR WITH ANY CONFLICTS.
 - C. ALL EXISTING PIPING, DUCTWORK, SPRINKLERS, CONDUIT, LIGHTING OR OTHER CONSTRUCTION SHALL BE RELOCATED AS NECESSARY FOR ALL DEMOLITION AND INSTALLATION WORK.
 - D. CONTRACTOR TO MINIMIZE CEILING DISTURBANCE IN ALL AREAS. GENERAL CONTRACTOR TO SUPPLY AND INSTALL 24"x24" ACCESS PANELS AS NECESSARY TO COMPLETE PLUMBING WORK. COORDINATE NEW ACCESS PANELS LOCATIONS WITH THE GC/COR. ACCESS TO CEILING AREA MAY ALSO BE AVAILABLE VIA THE EXISTING LIGHT FIXTURES. CONSULT WITH THE GC/COR.
 - E. COORDINATE ALL WORK WITH THE VA FOR ACCESS TO MAINTAIN PLUMBING SERVICES TO CRITICAL AREAS. EXPECT MOST OF THE WORK TO OCCUR AFTER NORMAL WORKING HOURS AND SERVICES RESTORED BY THE NEXT WORK DAY.

- KEY NOTES**
- 1. DEMO THE EXISTING DECONTAMINATION SINK. DISCONNECT THE DOMESTIC HOT AND COLD WATER PIPES, AIR LINES, WASTE PIPE, AND DE-IONIZED WATER LINES. CONTRACTOR SHALL PREPARE EXISTING UTILITIES FOR NEW SINKS. SEE DRAWING PP101 AND PP102 FOR NEW WORK.
 - 2. EXISTING PLUMBING FIXTURE TO REMAIN.
 - 3. EXISTING PLUMBING FIXTURE TO BE RELOCATED. DEMO AND CAP THE EXISTING SANITARY/VENT PIPES AND DOMESTIC WATER PIPING TO FACILITATE THE INSTALLATION OF THE NEW STERIS VISION WASHER. SEE DRAWINGS PS101 AND PP101 FOR NEW WORK AND FIXTURE LOCATION.
 - 4. EXISTING DE-IONIZER TANKS TO REMAIN. DISCONNECT EXISTING SUPPLY PIPES. DI SYSTEM PIPING TO BE MODIFIED. SEE DRAWINGS PP101, PP102 AND PP501 FOR NEW WORK.
 - 5. IN THE SOILED UTILITY ROOM, DEMO THE EXISTING HOSE BIBB/COMBINATION FAUCET, EMERGENCY SHOWER, STEAM GUN, AND ASSOCIATED PIPING COMPLETE. DEMO AND CAP PIPES BACK TO NEAREST SHUT-OFF OR MAIN TO FACILITATE THE INSTALLATION OF THE NEW STERIS RELIANCE 1227 CART WASHER. COORDINATE WORK. DEMO THE EXISTING COMPRESSED AIR NOZZLE/OUTLET AND ASSOCIATED PIPING COMPLETE. DEMO PIPES BACK TO THE COMPRESSOR IN THE MECHANICAL ROOM ABOVE. SEE DRAWING PD103.
 - 6. HIGH PRESSURE STEAM, CONDENSATE AND COMPRESSED AIR PIPING, FROM MECHANICAL ROOM ABOVE. SEE DRAWING PD103 FOR CONTINUATION.
 - 7. DEMO EXISTING 2"HPS THROUGH SOILED UTILITY ROOM AS SHOWN. PIPE TO BE RE-ROUTED TO FACILITATE THE INSTALLATION OF THE NEW STERIS RELIANCE 1227 CART WASHER. SEE DRAWING PP102.
 - 8. EXISTING 2"HPS SUPPLY SERVING THE EXISTING STERIS AUTOCLAVE MACHINES AND STERIS RELIANCE 444 UTENSIL WASHER. SEE DRAWING PP102 FOR NEW WORK.
 - 9. EXISTING PROCESS HOT WATER PIPE SERVING THE STERIS RELIANCE 444 UTENSIL WASHER. PIPE SERVING THE MACHINE TO BE DISCONNECTED AND CAPPED. SEE DRAWING PP102 FOR THE NEW PROCESS HOT WATER PIPE TO SERVE UNIT.
 - 10. EXISTING INSTRUMENT AIR SERVING THE EXISTING STERIS RELIANCE 444 UTENSIL WASHER. SEE PP102 FOR NEW WORK.
 - 11. EXISTING CONDENSATE DOWN THROUGH FLOOR.
 - 12. EXISTING STERIS RELIANCE 444 UTENSIL WASHER.
 - 13. EXISTING STERIS AUTOCLAVE MACHINES.
 - 14. EXISTING PASS THROUGH.
 - 15. EXISTING DE-IONIZED WATER SUPPLY ALONG WALL UP TO CEILING AREA. PIPE ROUTED TO EXISTING STERIS RELIANCE 444 UTENSIL WASHER AS SHOWN. SEE PP102 AND PP501 FOR MODIFIED SUPPLY PIPING.
 - 16. EXISTING HPS FROM THE MECHANICAL ROOM ABOVE TO REMAIN.
 - 17. EMERGENCY EYE-WASH STATION TO BE RELOCATED. SEE DRAWING PP101 FOR NEW LOCATION.



CONSULTANTS:		ARCHITECT/ENGINEERS:		Drawing Title PLUMBING PROCESS STEAM, COMPRESSED AIR, DE-IONIZED WATER, AND PROCESS HOT WATER DEMOLITION PLAN - FIRST FLOOR		Project Title RENOVATE STERILE PROCESSING SERVICES		Project Number 623-14-103		Office of Construction and Facilities Management Department of Veterans Affairs	
				Approved Project Director		Control Number VA256-14-C-0112		Building Number			
						PO Number C40110		Location JACK C. MONTGOMERY VAMC 101 HONOR HEIGHTS DRIVE, MARIETTA, GA			
								Drawing Number PD102			
Revisions						Date 3/10/2015		Checked KLP		Drawn JDF	
Date				200 Envoy Circle #201, Louisville KY 40299 - PH: 502.339.8511 - www.paradigmusa.com							



1 MECHANICAL ROOM PLAN
3/8" = 1'-0"

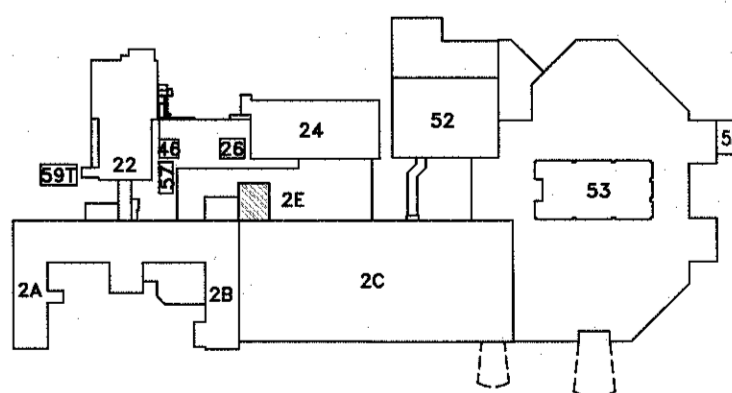
** EXISTING MECHANICAL ROOM EQUIPMENT SHOWN FOR CLARITY

NOTES

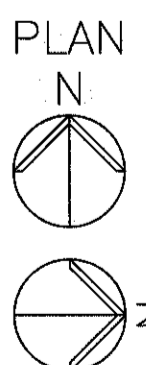
- REFER TO DRAWING P-001 FOR LEGEND, ABBREVIATIONS, AND GENERAL NOTES RELATED TO THIS SHEET.
- COORDINATE ALL WORK WITH DRAWINGS FROM OTHER TRADES PRIOR TO DEMOLITION. NOTIFY THE G.C./COR WITH ANY CONFLICTS.
- ALL EXISTING PIPING, DUCTWORK, SPRINKLERS, CONDUIT, LIGHTING OR OTHER CONSTRUCTION SHALL BE RELOCATED AS NECESSARY FOR ALL DEMOLITION AND INSTALLATION WORK.
- CONTRACTOR TO MINIMIZE CEILING DISTURBANCE IN ALL AREAS. GENERAL CONTRACTOR TO SUPPLY AND INSTALL 24"x24" ACCESS PANELS AS NECESSARY TO COMPLETE PLUMBING WORK. COORDINATE NEW ACCESS PANELS LOCATIONS WITH THE GC/COR. ACCESS TO CEILING AREA MAY ALSO BE AVAILABLE VIA THE EXISTING LIGHT FIXTURES. CONSULT WITH THE GC/COR.
- COORDINATE ALL WORK WITH THE VA FOR ACCESS TO MAINTAIN PLUMBING SERVICES TO CRITICAL AREAS. EXPECT MOST OF THE WORK TO OCCUR AFTER NORMAL WORKING HOURS AND SERVICES RESTORED BY THE NEXT WORK DAY.

KEY NOTES

- DEMO AND CAP THE EXISTING HPS STEAM PIPE SERVING THE STEAM GUN.
- DEMO COMPLETE, THE HPS PIPE AND THE 1/2 COMPRESSED AIR PIPE SERVING THE EXISTING CART WASH BELOW. CONDENSATE PIPE TO REMAIN.
- DEMO THE EXISTING COMPRESSED AIR DRYERS (3 STACKED). DRYER IS CURRENTLY SERVING THE EXISTING SPS EQUIPMENT (AUTOCLAVE MACHINES & RELIANCE 444 UTENSIL WASHER). NEW DESICCANT TYPE COMPRESSED AIR DRYER TO BE SUPPLIED BY THE VA AND INSTALLED BY THE CONTRACTOR. SEE DRAWING PP102, PP103 AND PP502 FOR NEW WORK.
- EXISTING OIL-LESS, 80 GALLON, 29.4 SCFM@100 PSIG, AIR COMPRESSOR SERVING THE EXISTING STERIS EQUIPMENT. SEE DRAWING PP102, PP103 AND PP502 FOR NEW WORK.
- EXISTING AIR COMPRESSOR SERVING THE AIR NOZZLE IN THE CART WASH ROOM BELOW. DEMO THE 1/2" PIPE SERVING THE NOZZLE BACK TO THE COMPRESSOR.



KEY PLAN - SECOND FLOOR
NTS



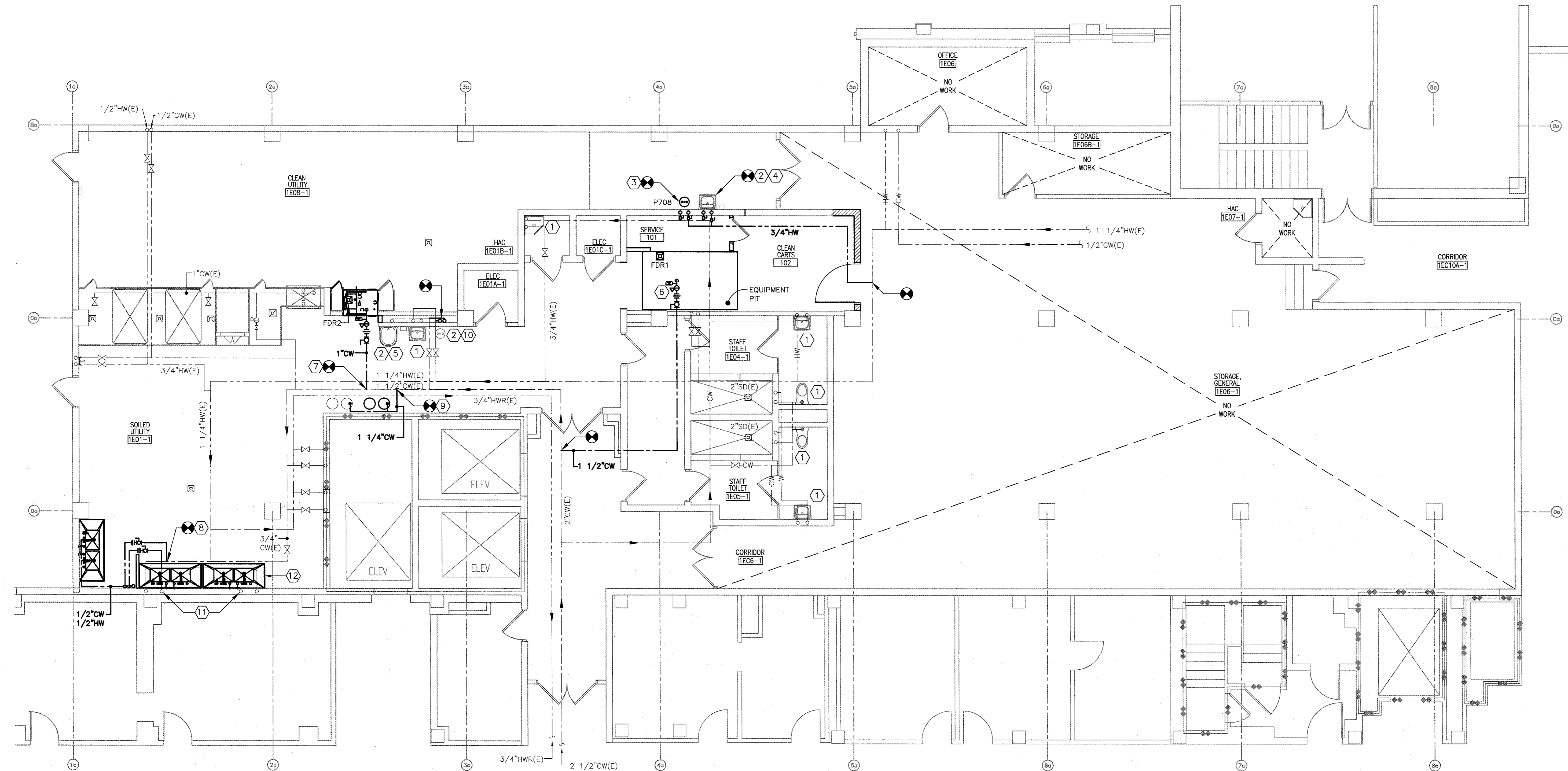
FULLY SPRINKLED
BID DOCUMENTS
FOR CONSTRUCTION

Office of
Construction
and Facilities
Management



		CONSULTANTS:			ARCHITECT/ENGINEERS:		Drawing Title PLUMBING DEMOLITION PLAN - MECHANICAL ROOM		Project Title RENOVATE STERILE PROCESSING SERVICES		Project Number 623-14-103		Office of Construction and Facilities Management
							Approved Project Director		Control Number VA256-14-C-0112		Building Number 1		
					200 Envoy Circle #201, Louisville KY 40299 - Pht: 502.339.8511 - www.paradigmusa.com		PO Number C40110		Location JACK C. MONTGOMERY VAMC 101 HONOR HEIGHTS DRIVE, MUSKOGEE, OK		Drawing Number PD103		
Revisions:		Date							Date 3/10/2015		Checked KLP		

one eighth inch = one foot
one quarter inch = one foot
three eighths inch = one foot
one half inch = one foot
three quarters inch = one foot
one inch = one foot
one and one half inches = one foot
two inches = one foot
three inches = one foot



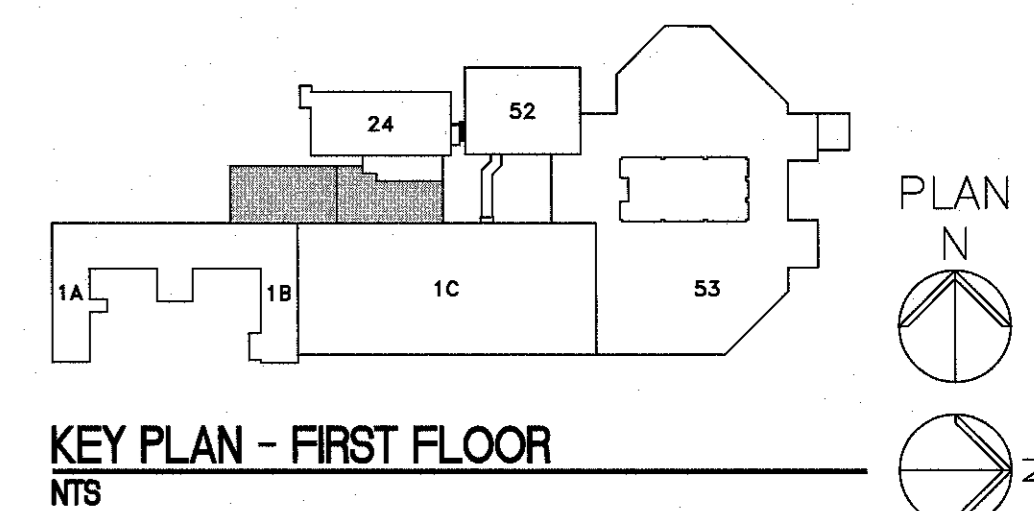
1 1ST FLOOR PLAN
3/16\"/>

NOTES

- REFER TO DRAWING P-001 FOR LEGEND, ABBREVIATIONS, AND GENERAL NOTES RELATED TO THIS SHEET.
- COORDINATE ALL WORK WITH DRAWINGS FROM OTHER TRADES PRIOR TO DEMOLITION. NOTIFY THE G.C./COR WITH ANY CONFLICTS.
- ALL EXISTING PIPING, DUCTWORK, SPRINKLERS, CONDUIT, LIGHTING OR OTHER CONSTRUCTION SHALL BE RELOCATED AS NECESSARY FOR ALL DEMOLITION AND INSTALLATION WORK.
- CONTRACTOR TO MINIMIZE CEILING DISTURBANCE IN ALL AREAS. GENERAL CONTRACTOR TO SUPPLY AND INSTALL 24"x24" ACCESS PANELS AS NECESSARY TO COMPLETE PLUMBING WORK. COORDINATE NEW ACCESS PANELS LOCATIONS WITH THE GC/COR. ACCESS TO CEILING AREA MAY ALSO BE AVAILABLE VIA THE EXISTING LIGHT FIXTURES. CONSULT WITH THE GC/COR.
- COORDINATE ALL WORK WITH THE VA FOR ACCESS TO MAINTAIN PLUMBING SERVICES TO CRITICAL AREAS. EXPECT MOST OF THE WORK TO OCCUR AFTER NORMAL WORKING HOURS AND SERVICES RESTORED BY THE NEXT WORK DAY.

KEY NOTES

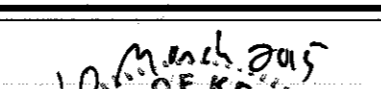


- EXISTING PLUMBING FIXTURE TO REMAIN.
- NEW LOCATION FOR EXISTING PLUMBING FIXTURE. REPLACE FIXTURE TRAP AND TAILPIECE. MATCH EXISTING. SEE DRAWING PD101 FOR PREVIOUS LOCATION.
- NEW EMERGENCY EYE-WASH STATION. INSTALL 1/2" HW AND CW WATER SUPPLY PIPES TO FIXTURE AS SHOWN. INSTALL SUPPLY STOPS. ALSO INSTALL THERMOSTATIC MIXING VALVE TO TEMPER THE WATER. INSTALL THE TEMPERING VALVE AS CLOSE TO THE EYE-WASH STATION AS POSSIBLE.
- RELOCATED HAND SINK. INSTALL 1/2" HW AND CW SUPPLY PIPES TO FIXTURE AS SHOWN. INSTALL SUPPLY STOPS. ALSO INSTALL A THERMOSTATIC MIXING VALVE TO TEMPER THE WATER. INSTALL THE TEMPERING VALVE AS CLOSE TO THE FIXTURE AS POSSIBLE.
- RELOCATED HOPPER SINK. CONNECT TO EXISTING CW SUPPLY PIPE. VERIFY THAT THE EXISTING SUPPLY STOP IS OPERABLE. REPLACE AS NEEDED.
- CW SUPPLY PIPE TO NEW STERIS RELIANCE 1227 CART WASHER (NOT SHOWN). INSTALL A NEW PRESSURE REDUCING VALVE WITH BALL VALVE STOP, UNION AND PRESSURE GAUGES ON EITHER SIDE OF PRV. REDUCE PRESSURE TO 50 PSIG. INSTALL A WATER HAMMER ARRESTOR(S) SIZED FOR 22 GPM. CONNECTION SIZE AT UNIT IS 1" NPT. CONSULT AND COORDINATE WITH STERIS. SEE DETAIL 6 ON PP501.
- CW SUPPLY PIPE TO NEW STERIS RELIANCE VISION UTENSIL WASHER. CONNECT TO EXISTING CW SUPPLY. CONNECT WITH A 1" PIPE TO A NEW PRESSURE REDUCING VALVE WITH BALL VALVE STOP, UNION AND PRESSURE GAUGES ON EITHER SIDE OF PRV. REDUCE PRESSURE TO 50 PSIG. INSTALL A WATER HAMMER ARRESTOR(S) SIZED FOR 9 GPM. CONNECTION SIZE AT UNIT IS 1/2" NPT. CONSULT AND COORDINATE WITH STERIS.
- CONNECT TO EXISTING HW AND CW SUPPLY PIPES ABOVE CEILING. RUN NEW 3/4" HW AND CW SUPPLY PIPES TO NEW DECONTAMINATION SINK. PIPES TO BE ROUTED DOWN THROUGH CEILING, THEN EXPOSED, OVER TO THE NEW DECONTAMINATION SINK AS SHOWN. NEW FIXTURE SUPPLIED BY THE VA. CONSULT WITH THE COR REGARDING PIPE ROUTING.
- CONNECT TO CW SUPPLY ABOVE THE CEILING WITH A 1 1/4" PIPE. RUN PIPE TO NEW DE-IONIZED WATER TANKS. SEE DETAIL 1 ON PP501.
- RELOCATED EMERGENCY EYE-WASH STATION. INSTALL 1/2" HW AND CW SUPPLY PIPES TO FIXTURE AS SHOWN. INSTALL SUPPLY STOPS. ALSO INSTALL THERMOSTATIC MIXING VALVE TO TEMPER THE WATER. INSTALL THE TEMPERING VALVE AS CLOSE TO THE EYE-WASH STATION AS POSSIBLE.
- FOR THE TWO ADJACENT DECONTAMINATION SINKS, CONNECT TO THE EXISTING HW AND CW PIPE THROUGH WALL.
- NEW DECONTAMINATION SINK SUPPLIED BY THE GENERAL CONTRACTOR. TYPICAL OF 3.



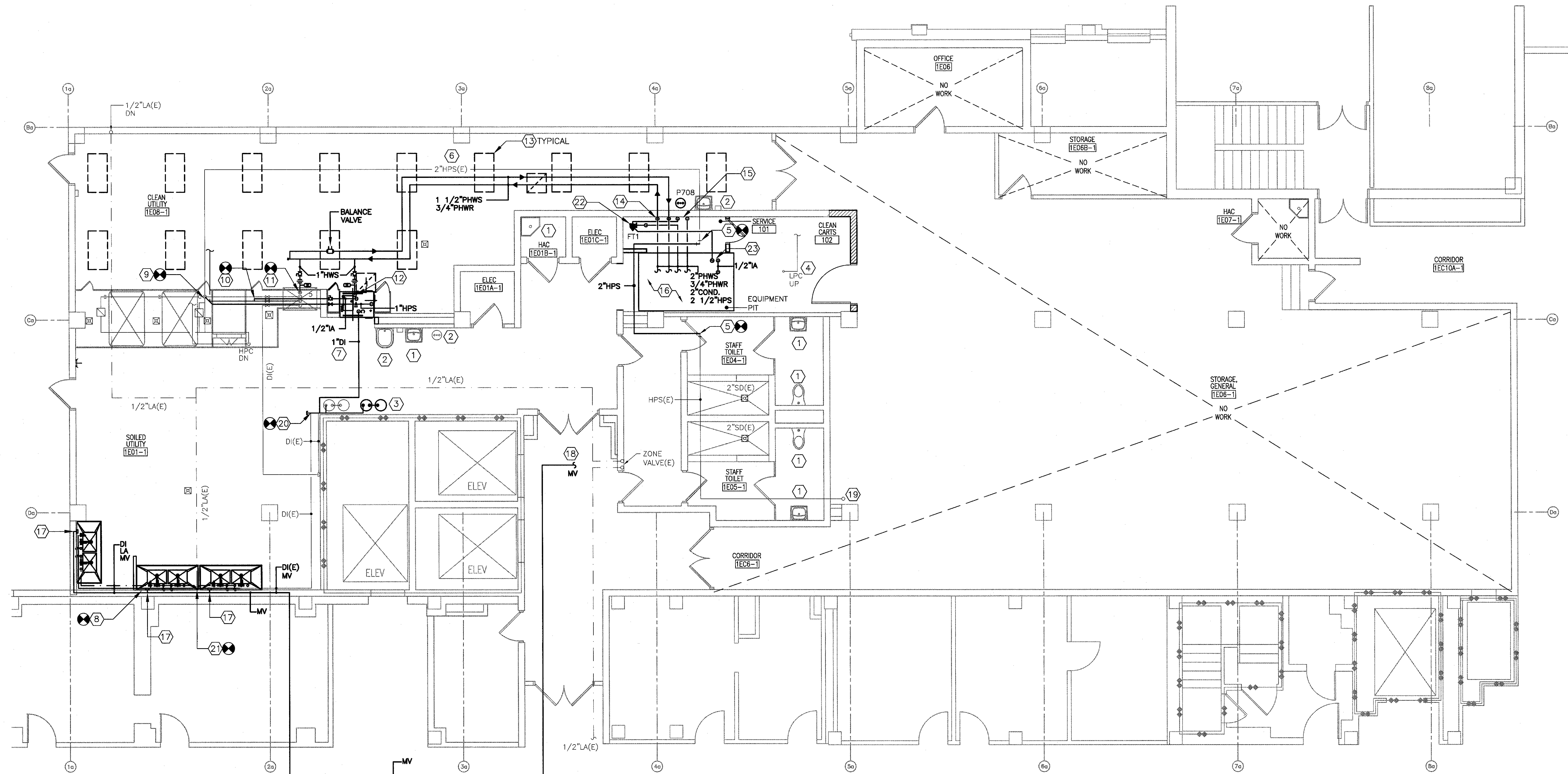
FULLY SPRINKLED
BID DOCUMENTS
FOR CONSTRUCTION

Office of
Construction
and Facilities
Management

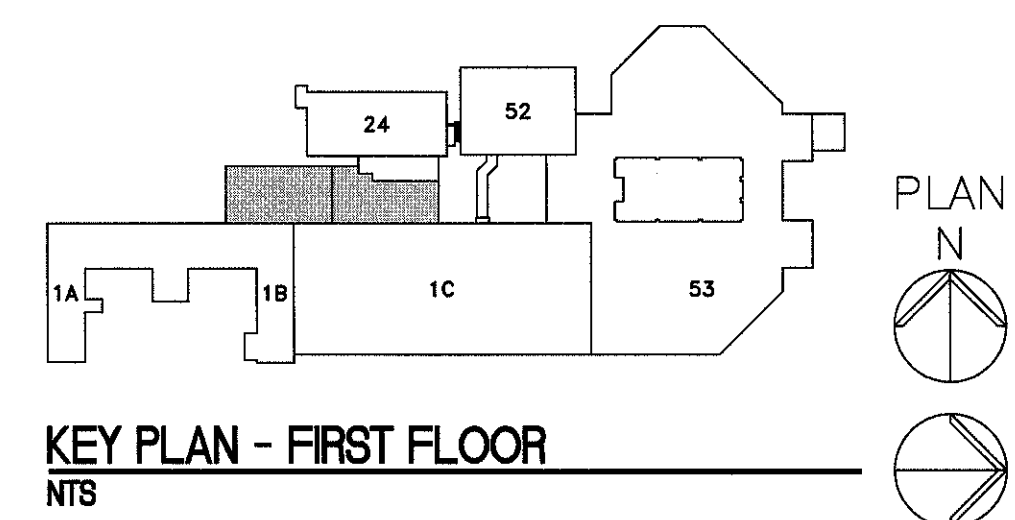


		CONSULTANTS:			ARCHITECT/ENGINEERS:		 200 Envoy Circle #201, Louisville KY 40299 - PH: 502.339.8511 - www.paradigmusa.com		Drawing Title PLUMBING PLAN - DOMESTIC WATER NEW WORK - FIRST FLOOR		Project Title RENOVATE STERILE PROCESSING SERVICES		Project Number 623-14-103		Office of Construction and Facilities Management			
									Approved Project Director		Control Number VA256-14-C-0112		Location JACK C. MONTGOMERY VAMC 101 HONOR HEIGHTS DRIVE, MARIETTA, GA			Drawing Number PP101		
										PO Number C40110		Date 3/10/2015		Checked KLP		Drawn JDF		 Department of Veterans Affairs
Revisions:		Date:																

three inches = one foot
one and one half inches = one foot
one inch = one foot
three quarters inch = one foot
one half inch = one foot
three eighths inch = one foot
one quarter inch = one foot
one eighth inch = one foot




1 1ST FLOOR PLAN
3/16" = 1'-0"

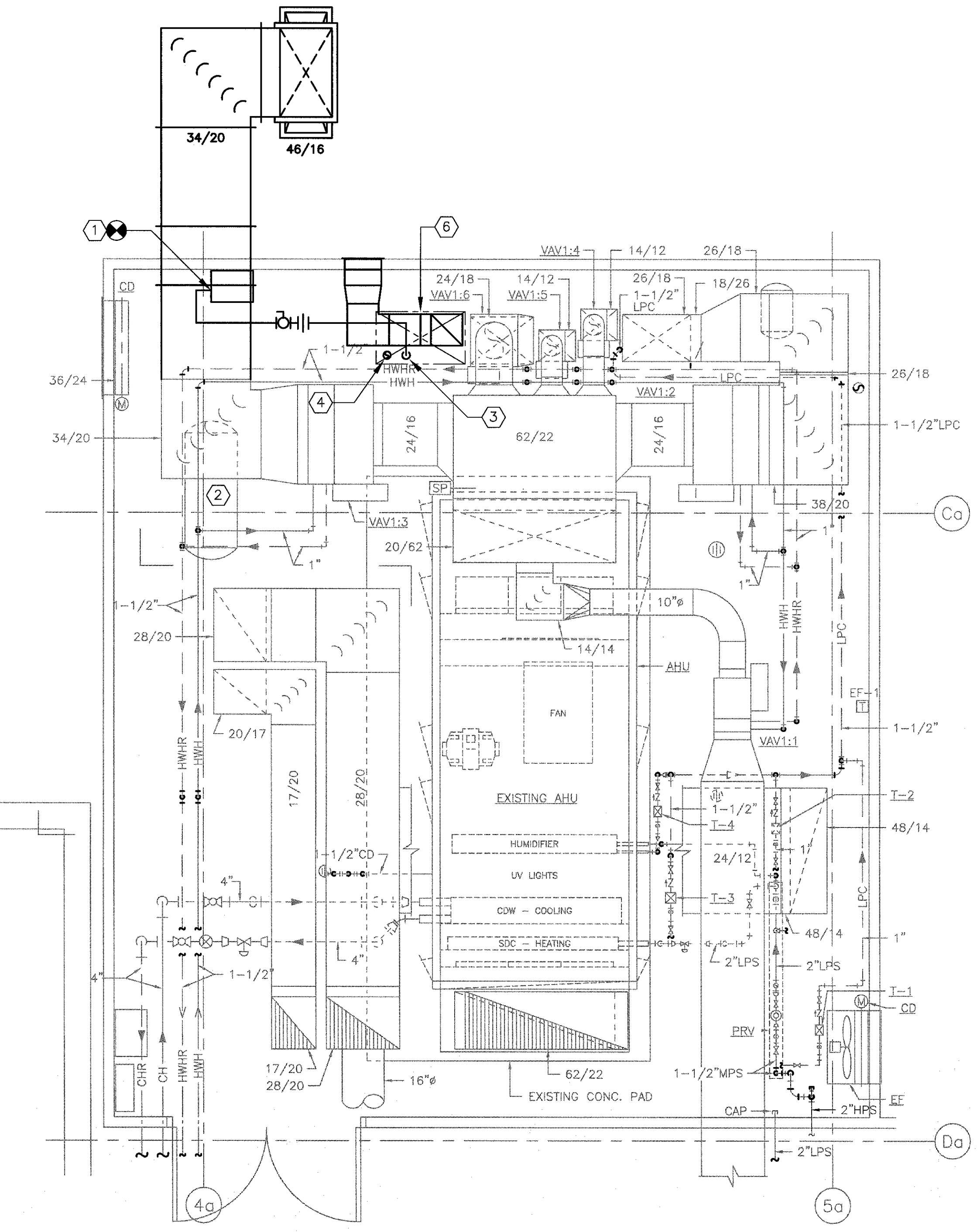


KEY PLAN - FIRST FLOOR
NTS

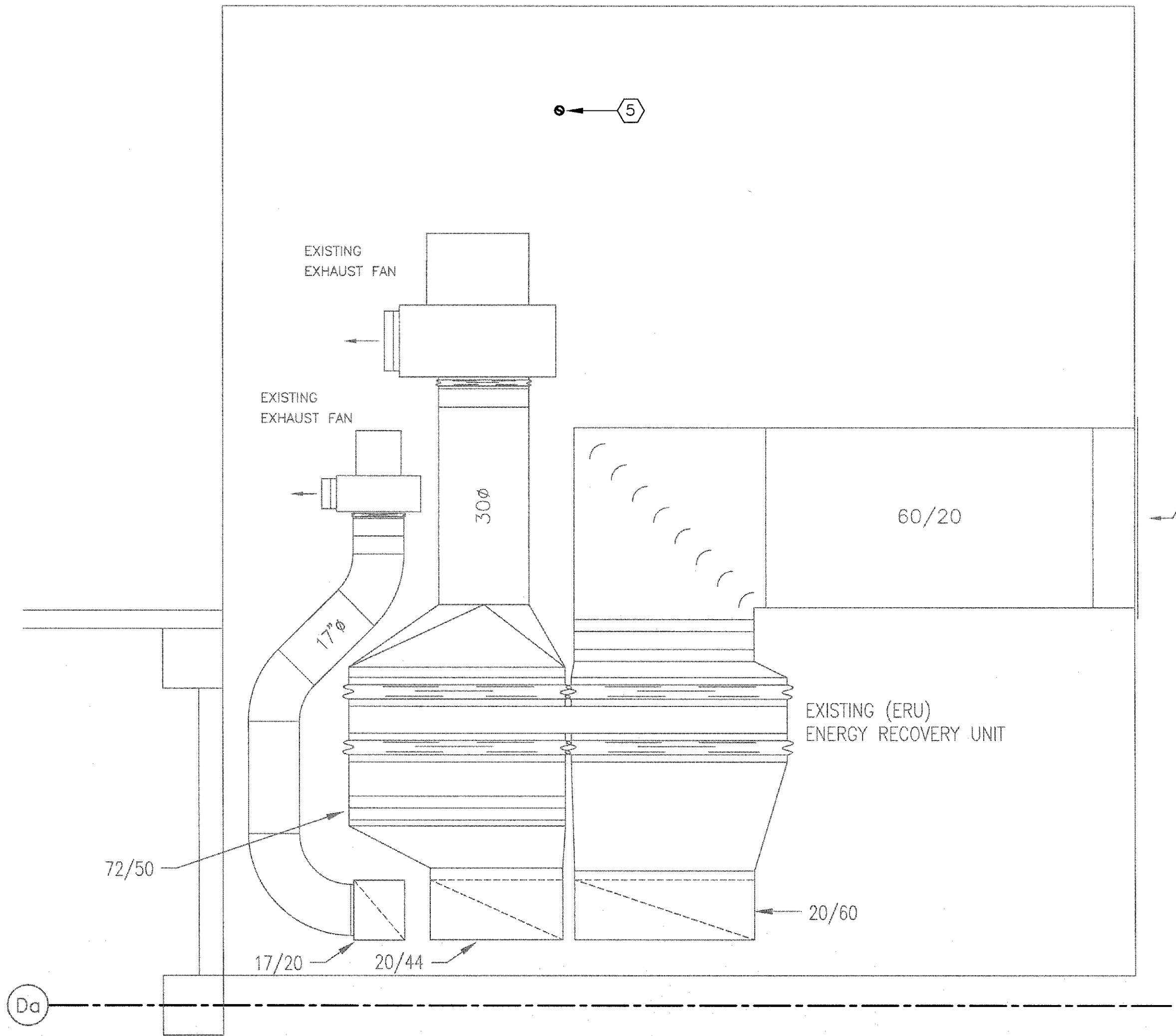
FULLY SPRINKLED
BID DOCUMENTS
FOR CONSTRUCTION

- NOTES**
- REFER TO DRAWING P-001 FOR LEGEND, ABBREVIATIONS, AND GENERAL NOTES RELATED TO THIS SHEET.
 - COORDINATE ALL WORK WITH DRAWINGS FROM OTHER TRADES PRIOR TO DEMOLITION. NOTIFY THE G.C./COR WITH ANY CONFLICTS.
 - ALL EXISTING PIPING, DUCTWORK, SPRINKLERS, CONDUIT, LIGHTING OR OTHER CONSTRUCTION SHALL BE RELOCATED AS NECESSARY FOR ALL DEMOLITION AND INSTALLATION WORK.
 - CONTRACTOR TO MINIMIZE CEILING DISTURBANCE IN ALL AREAS. GENERAL CONTRACTOR TO SUPPLY AND INSTALL 24"x24" ACCESS PANELS AS NECESSARY TO COMPLETE PLUMBING WORK. COORDINATE NEW ACCESS PANELS LOCATIONS WITH THE GC/COR. ACCESS TO CEILING AREA MAY ALSO BE AVAILABLE VIA THE EXISTING LIGHT FIXTURES. CONSULT WITH THE GC/COR.
 - COORDINATE ALL WORK WITH THE VA FOR ACCESS TO MAINTAIN PLUMBING SERVICES TO CRITICAL AREAS. EXPECT MOST OF THE WORK TO OCCUR AFTER NORMAL WORKING HOURS AND SERVICES RESTORED BY THE NEXT WORK DAY.
- KEY NOTES**
- EXISTING PLUMBING FIXTURE TO REMAIN.
 - NEW LOCATION FOR EXISTING PLUMBING FIXTURE. SEE DRAWING PD102 FOR PREVIOUS LOCATION.
 - TWO (2) NEW AND TWO (2) EXISTING DE-IONIZED WATER TANKS SUPPLIED BY OTHERS. CONNECT TANKS IN A PARALLEL PIPING ARRANGEMENT. SEE DETAIL 1 ON PP501.
 - LOW PRESSURE CONDENSATE PIPE FROM MECHANICAL ROOM ABOVE TO REMAIN.
 - REROUTE EXISTING 2" HPS LINE AROUND THE NEW STERIS RELIANCE 1227 CART WASHER. COORDINATE ROUTING WITH MECHANICAL CONTRACTOR TO AVOID NEW SUPPLY DUCT. SEE DRAWING MH101. RECONNECT AS SHOWN. CART WASHER NOT SHOWN FOR CLARITY.
 - EXISTING 2" HPS SERVING THE EXISTING AUTOCLAVE MACHINES AND RELIANCE 444 UTENSIL WASHER.
 - NEW 1" DE-IONIZED SUPPLY TO STERIS RELIANCE VISION UTENSIL WASHER. INSTALL SHUT-OFF VALVE WITH UNION ENDS AT WASHER.
 - CONNECT TO EXISTING DE-IONIZED WATER SUPPLY, CURRENTLY SERVING TWO (2) DECONTAMINATION SINKS, AND EXTEND TO NEW DECONTAMINATION SINK. INSTALL BALL VALVE SHUT-OFF.
 - CONNECT TO EXISTING 2"HPS PIPE. ROUTE NEW 1"HPS PIPE TO NEW STERIS RELIANCE VISION UTENSIL WASHER. SEE DETAIL 7 ON PP502.
 - CONNECT TO EXISTING INSTRUMENT AIR PIPE. ROUTE NEW 1/2" PIPE TO NEW STERIS RELIANCE VISION UTENSIL WASHER. INSTALL BALL VALVE SHUT-OFF.
 - CONNECT NEW PROCESS HOT WATER TO EXISTING STERIS RELIANCE 444 UTENSIL WASHER. INSTALL A BALL VALVE STOP, UNION AND WATER HAMMER ARRESTOR(S) SIZED FOR 10 GPM.
 - CONNECT NEW PROCESS HOT WATER TO NEW STERIS RELIANCE VISION UTENSIL WASHER. INSTALL A BALL VALVE STOP, UNION AND WATER HAMMER ARRESTOR(S) SIZED FOR 10 GPM.
 - CONTRACTOR SHALL USE EXISTING LIGHT FIXTURES AND ACCESS PANELS TO GAIN ACCESS TO THE CEILING AREA. FIELD DETERMINE PIPE ROUTING.
 - NEW PHWS AND PHWR PIPES FROM TUNNEL BELOW. SEE DRAWING PP104 FOR CONTINUATION.
 - NEW HPS AND LPC PIPES FROM TUNNEL BELOW. SEE DRAWING PP104 FOR CONTINUATION AND DETAIL 3 ON PP501.
 - SEE DETAILS 3 AND 6 ON DRAWING PP501 FOR PIPING SCHEMATIC AT THE NEW CART WASHER. CONSULT WITH THE EQUIPMENT MANUFACTURER PRIOR TO WORK.
 - NEW MEDICAL VACUUM WALL OUTLET, TYPICAL OF THREE (3) LOCATIONS, ONE AT EACH DECONTAMINATION SINK. CHEMETROL 500 SERIES, QUICK CONNECT OR EQUAL. CONSULT WITH THE COR REGARDING EXACT LOCATION.
 - INSTALL NEW MEDICAL VACUUM PIPING. CONNECT TO EXISTING MV PIPE IN ELEVATOR CORRIDOR AND RUN TO NEW OUTLETS AT DECONTAMINATION SINKS AS SHOWN. CONSULT WITH THE COR REGARDING SIZING AND EXACT ROUTING.
 - EXISTING HPS FROM MECHANICAL ROOM ABOVE. VA TO INCREASE PRESSURE TO 75 PSIG.
 - RECONNECT EXISTING DI SUPPLY TO THE RELIANCE 444 UTENSIL WASHER, DECONTAMINATION SINKS AND ULTRASONIC CLEANER. SEE DETAIL 1 ON PP501.
 - NEW LAB AIR CONNECTION TO EXISTING SUPPLY. SEE DETAIL 6 ON PP502.
 - NEW FLASH TANK. SEE DETAILS 3 ON PP501, 8 ON PP502, AND 1 ON PP103 FOR PIPING.
 - FLASH TANK VENT AND IA PIPE UP THROUGH FLOOR TO MECH. ROOM ABOVE. SEE DRAWING PP103 FOR CONTINUATION

		CONSULTANTS:			ARCHITECT/ENGINEERS:		Drawing Title PROCESS STEAM, COMPRESSED AIR, DEIONIZED WATER + PROCESS HOT WATER NEW WORK		Project Title RENOVATE STERILE PROCESSING SERVICES		Project Number 623-14-103		Office of Construction and Facilities Management		
							Approved Project Director		Control Number VA256-14-C-0112		Location JACK C. MONTGOMERY VAMC 101 HONOR HEIGHTS DRIVE, MUSKOGEE, OK			Building Number -	Drawing Number PP102
Revisions		Date					PO Number C40110		Date 3/10/2015		Checked KLP	Drawn JDF			



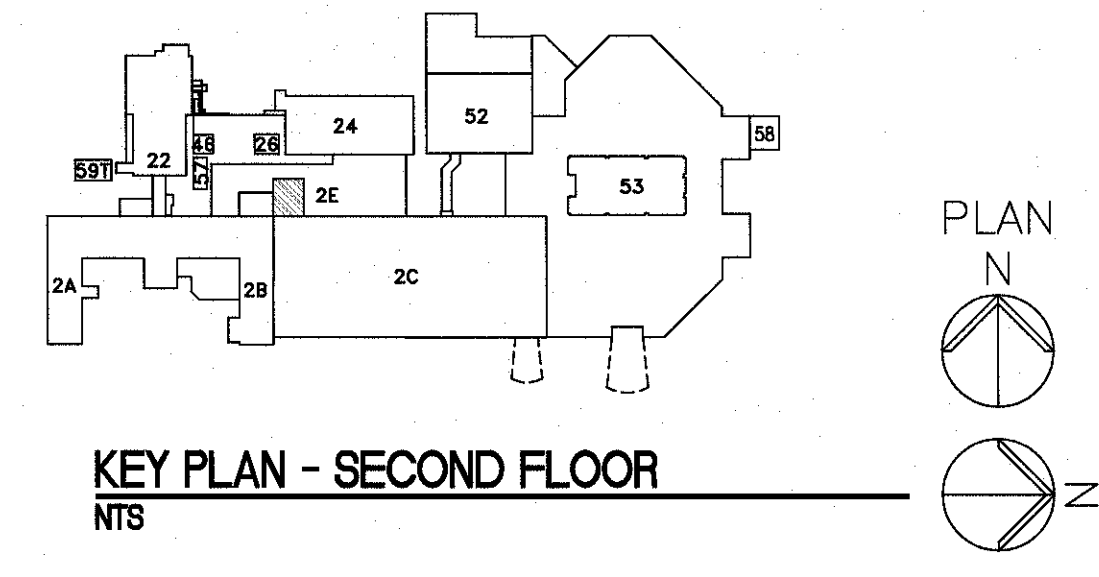
1 MECHANICAL ROOM PLAN
3/8" = 1'-0" ** EXISTING MECHANICAL ROOM EQUIPMENT SHOWN FOR CLARITY



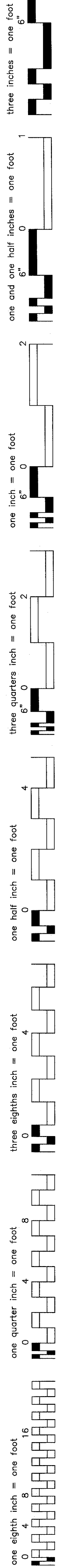
2 MECHANICAL ROOM ROOF PLAN
3/8" = 1'-0" ** EXISTING MECHANICAL EQUIPMENT SHOWN FOR CLARITY

- NOTES**
- A. REFER TO DRAWING P-001 FOR LEGEND, ABBREVIATIONS, AND GENERAL NOTES RELATED TO THIS SHEET.
 - B. COORDINATE ALL WORK WITH DRAWINGS FROM OTHER TRADES PRIOR TO DEMOLITION. NOTIFY THE G.C./COR WITH ANY CONFLICTS.
 - C. ALL EXISTING PIPING, DUCTWORK, SPRINKLERS, CONDUIT, LIGHTING OR OTHER CONSTRUCTION SHALL BE RELOCATED AS NECESSARY FOR ALL DEMOLITION AND INSTALLATION WORK.
 - D. CONTRACTOR TO MINIMIZE CEILING DISTURBANCE IN ALL AREAS. GENERAL CONTRACTOR TO SUPPLY AND INSTALL 24"x24" ACCESS PANELS AS NECESSARY TO COMPLETE PLUMBING WORK. COORDINATE NEW ACCESS PANELS LOCATIONS WITH THE GC/COR. ACCESS TO CEILING AREA MAY ALSO BE AVAILABLE VIA THE EXISTING LIGHT FIXTURES. CONSULT WITH THE GC/COR.
 - E. COORDINATE ALL WORK WITH THE VA FOR ACCESS TO MAINTAIN PLUMBING SERVICES TO CRITICAL AREAS. EXPECT MOST OF THE WORK TO OCCUR AFTER NORMAL WORKING HOURS AND SERVICES RESTORED BY THE NEXT WORK DAY.

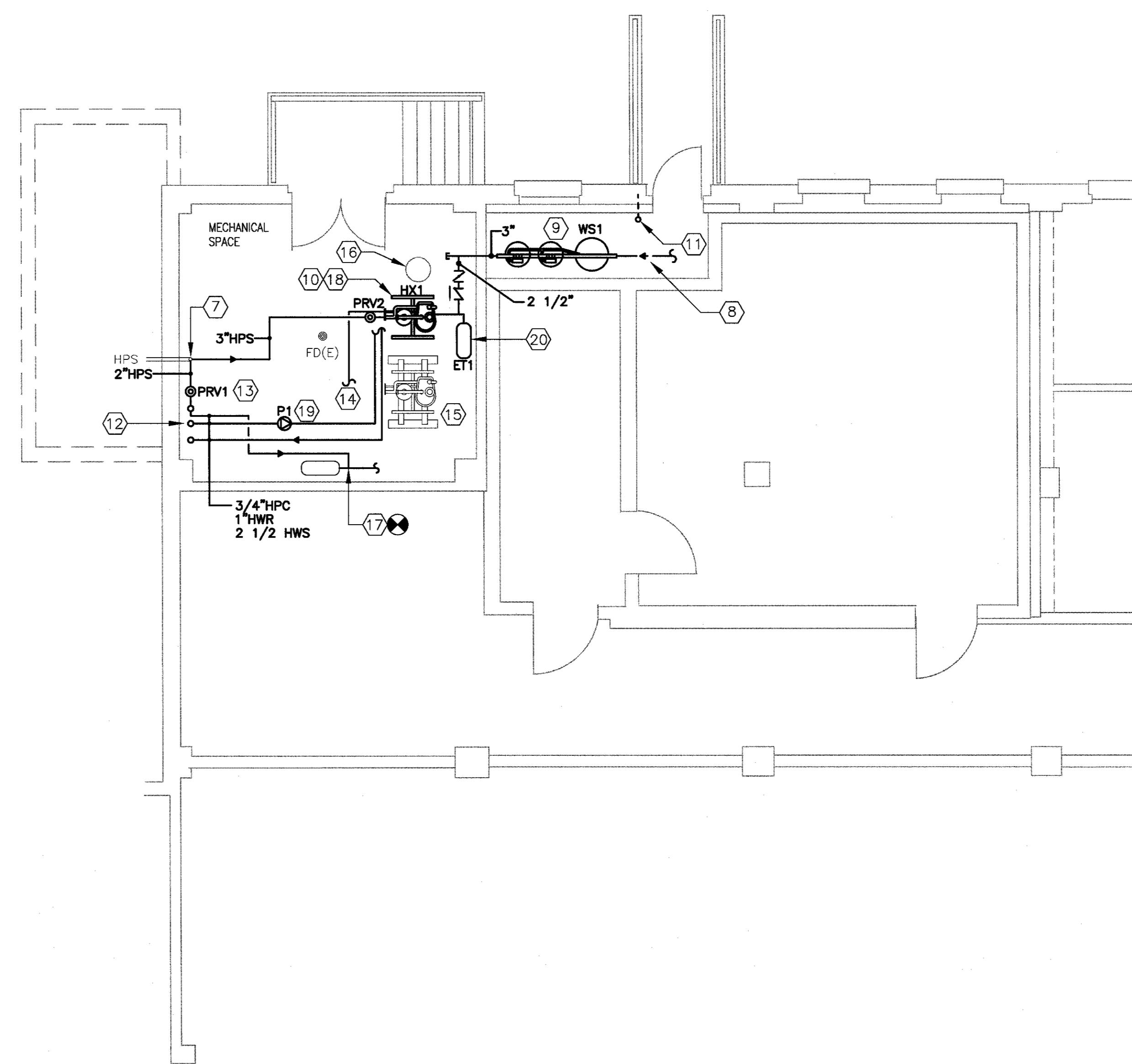
- KEY NOTES**
- 1. NEW DESSICANT AIR DRYER SUPPLIED BY THE VA INSTALLED BY THE CONTRACTOR. DRYER WILL SERVE THE EXISTING SPS EQUIPMENT (AUTOCLAVE MACHINES & RELIANCE 444 UTENSIL WASHER). CONNECT NEW 1/2" PIPE TO SERVE THE NEW STERIS CART WASH BELOW. INSTALL NEW BALL VALVE STOP AND UNION. RE-CONNECT EXISTING SUPPLY PIPES. FIELD DETERMINE EXACT PIPING. CONSULT WITH THE COR. SEE DETAIL 1 ON PP502.
 - 2. EXISTING POWEREX, OIL-LESS, 80 GALLON, 29.4 SCFM@100 PSIG, AIR COMPRESSOR SERVING THE EXISTING SPS EQUIPMENT, AND TO SERVE THE NEW STERIS EQUIPMENT.
 - 3. ROUTE 1/2" INSTRUMENT AIR PIPE DOWN THROUGH FLOOR AND CONNECT TO NEW RELIANCE 1227 CART WASHER BELOW. UTILIZE EXISTING FLOOR OPENING BEING VACATED. SEE MECHANICAL DRAWING MD103. SEE DETAIL 6 ON PP501 AND DETAIL 1 ON PP502 FOR NEW PIPE SCHEMATICS.
 - 4. 2 1/2" FLASH TANK VENT PIPE FROM ROOM BELOW. ROUTE VENT PIPE UP THROUGH FLOOR. UTILIZE EXISTING FLOOR OPENING BEING VACATED. SEE MECHANICAL DRAWING MD103. SEE DRAWING PP102 FOR CONTINUATION. ROUTE PIPE TO DAYLIGHT THROUGH MECHANICAL ROOM ROOF. SEE DRAWING 2 THIS SHEET.
 - 5. 2 1/2" FLASH TANK VENT THROUGH ROOF. ROOF CUT AND FLASHING BY THE G.C. COORDINATE WORK.
 - 6. EXISTING SUPPLY DUCT THROUGH FLOOR IN THIS AREA TO BE REMOVED. SEE MECHANICAL DRAWING MD103. PLUMBING CONTRACTOR TO UTILIZE OPENING FOR INSTRUMENT AIR AND FLASH TANK VENT PIPING. AREA TO BE PATCHED BY G.C. SEE ARCHITECTURAL DRAWINGS. COORDINATE WORK.



CONSULTANTS:			ARCHITECT/ENGINEERS:		Drawing Title PLUMBING PLAN - NEW WORK MECHANICAL ROOM		Project Title RENOVATE STERILE PROCESSING SERVICES		Project Number 623-14-103		Office of Construction and Facilities Management Department of Veterans Affairs
			 200 Envoy Circle #201, Louisville KY 40299 - PH: 502.339.8511 - www.paradigmusa.com		Approved Project Director Control Number VA256-14-C-0112 PO Number C40110		Location JACK C. MONTGOMERY VAMC 501 HONOR HEIGHTS DRIVE, MUSKOGEE, OK Date 3/10/2015 Checked KLP Drawn JDF		Building Number 1 Drawing Number PP103		
Revisions:											



1

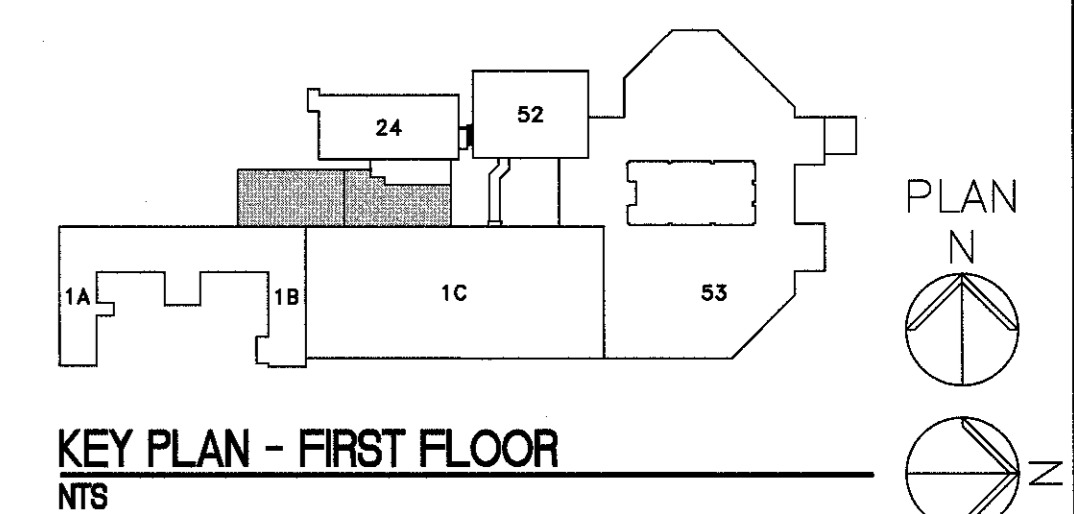


2

- ## NOTES

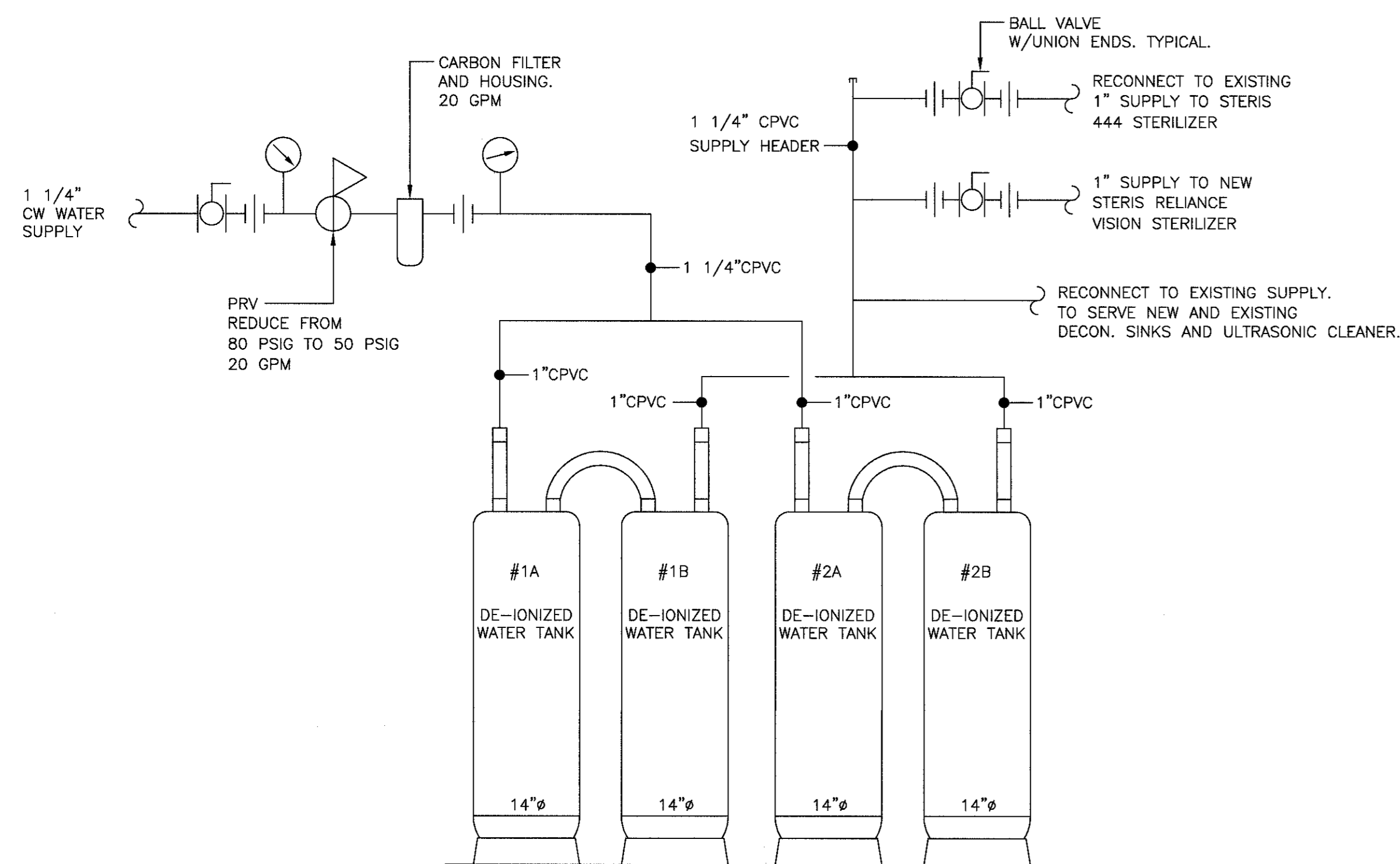
KEY NOTES 

1. PHWS, PHWR, HPS AND LPC PIPE FROM ABOVE. SEE DRAWING PP102 FOR CONTINUATION. ANCHOR PIPES AT FLOOR PENETRATION.
2. CONNECT TO EXISTING LPC. SEE DETAIL 3 AND DETAIL 8 ON PP501.
3. RUN PIPES IN COORIDOR AS HIGH AS POSSIBLE. FIELD DETERMINE/MEASURE/VERIFY ALL PIPE ROUTING.
4. RUN PIPES THROUGH WAREHOUSE AS HIGH AS POSSIBLE. FIELD DETERMINE/MEASURE/VERIFY ALL PIPE ROUTING.
5. PIPES DOWN TO THE SUB-BASEMENT BELOW. FIELD DETERMINE/MEASURE/VERIFY THE EXACT LOCATION. SEE DETAIL 2 THIS SHEET.
6. SEE DETAIL 3 AND DETAIL 8 FOR STEAM RISER SCHEMATIC AND PIPING ISOMETRIC.
7. EXISTING HIGH PRESSURE STEAM PIPE THROUGH WALL. CONNECT TO RISER IN TWO LOCATIONS.
8. COLD WATER/HARD WATER INLET TO WATER SOFTENER, INLET PIPE SIZE 3". SEE DETAIL 10 ON PP502.
9. NEW WATER SOFTENER. CULLIGAN OR EQUAL. SEE PP601 FOR EQUIPMENT SCHEDULE. CONSULT WITH THE MANUFACTURER PRIOR TO INSTALLATION.
10. NEW PACKAGED, SKID MOUNTED, CONSTANT TEMPERATURE WATER HEATER. WITH HEAT EXCHANGER, STEAM REDUCING VALVE, AND RE-CIRCULATION KIT. LESLIE OR EQUAL. CONSULT WITH THE MANUFACTURER PRIOR TO INSTALLATION.
11. EXISTING WATER SUPPLY.
12. PIPES UP TO BUILDING 24 WAREHOUSE. SEE DRAWING 1 THIS SHEET FOR CONTINUATION. ANCHOR PIPES AT FLOOR PENETRATION.
13. NEW PRV1 SERVING NEW CART WASHER. VALVE TO REDUCE PRESSURE FROM 100 PSIG. TO 75 PSIG. SEE DETAIL 3 ON PP501, DETAILS 9 AND 11 ON PP502 FOR PIPING, AND PP601 FOR EQUIPMENT SCHEDULES.
14. CONNECT TO EXISTING LPC.
15. EXISTING PACKAGED, SKID MOUNTED WATER HEATER WITH HEAT EXCHANGER, STEAM REDUCING VALVE, AND RECIRCULATION KIT, TO REMAIN.
16. EXISTING SUMP AND PUMP.
17. CONNECT NEW STEAM DRIP/RISER TRAP PIPING TO EXISTING FLASH TANK. FIELD VERIFY CONNECTION POINT. SEE DETAIL 3 ON PP501.
18. MAKE PIPING CONNECTIONS TO NEW HEAT EXCHANGER. CW, PHWS, PHWR, HPS, LPC. CONSULT WITH MANUFACTURER PRIOR TO INSTALLATION.
19. NEW IN-LINE RECIRCULATION PUMP. SEE DETAIL 2 ON PP502 FOR PIPING AND PP601 FOR EQUIPMENT SCHEDULES.
20. NEW EXPANSION TANK. SEE DETAIL 10 ON PP502 AND EQUIPMENT SCHEDULE ON PP601. TANK TO BE MOUNTED HORIZONTALLY OR VERTICALLY BASED ON FIELD CONDITIONS. CONSULT WITH THE COR.

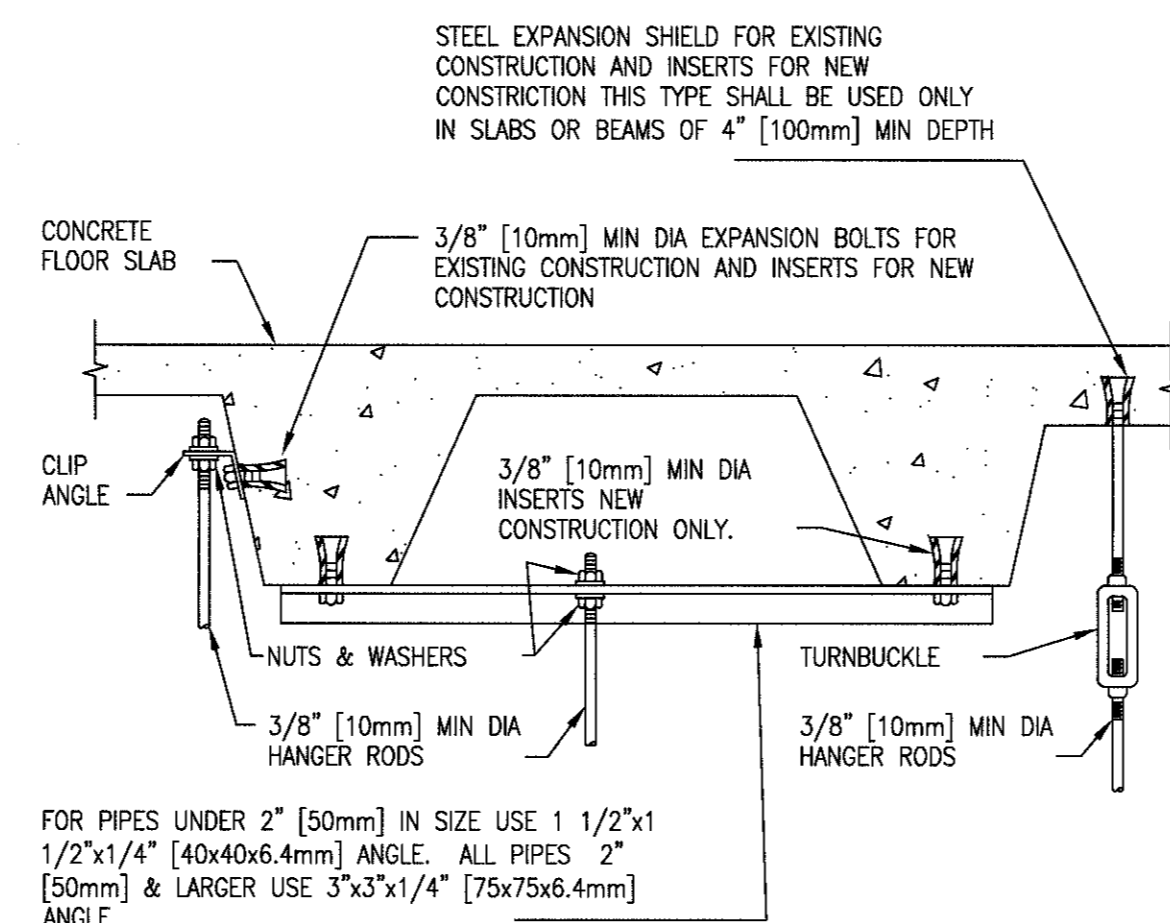


**FULLY SPRINKLED
BID DOCUMENTS
FOR CONSTRUCTION**

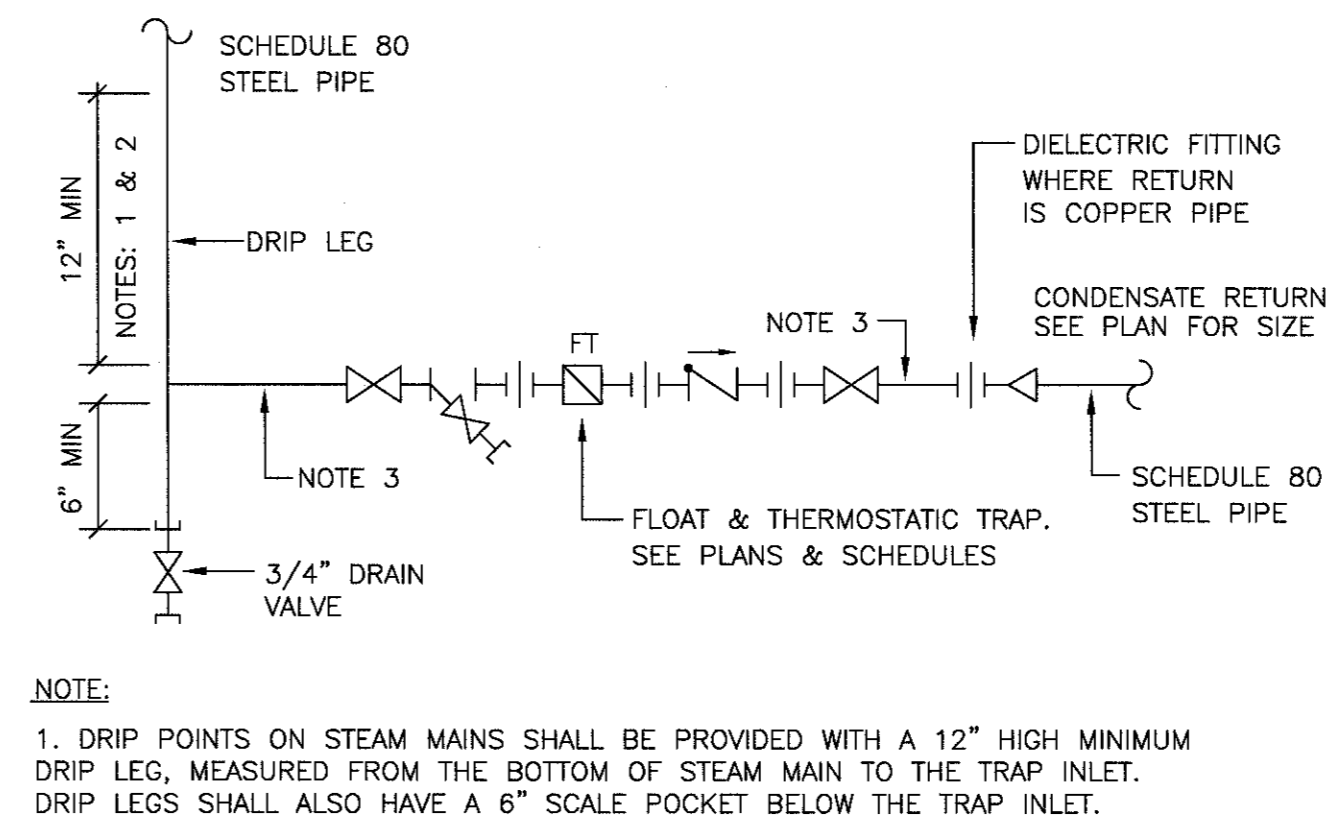
[illegible]



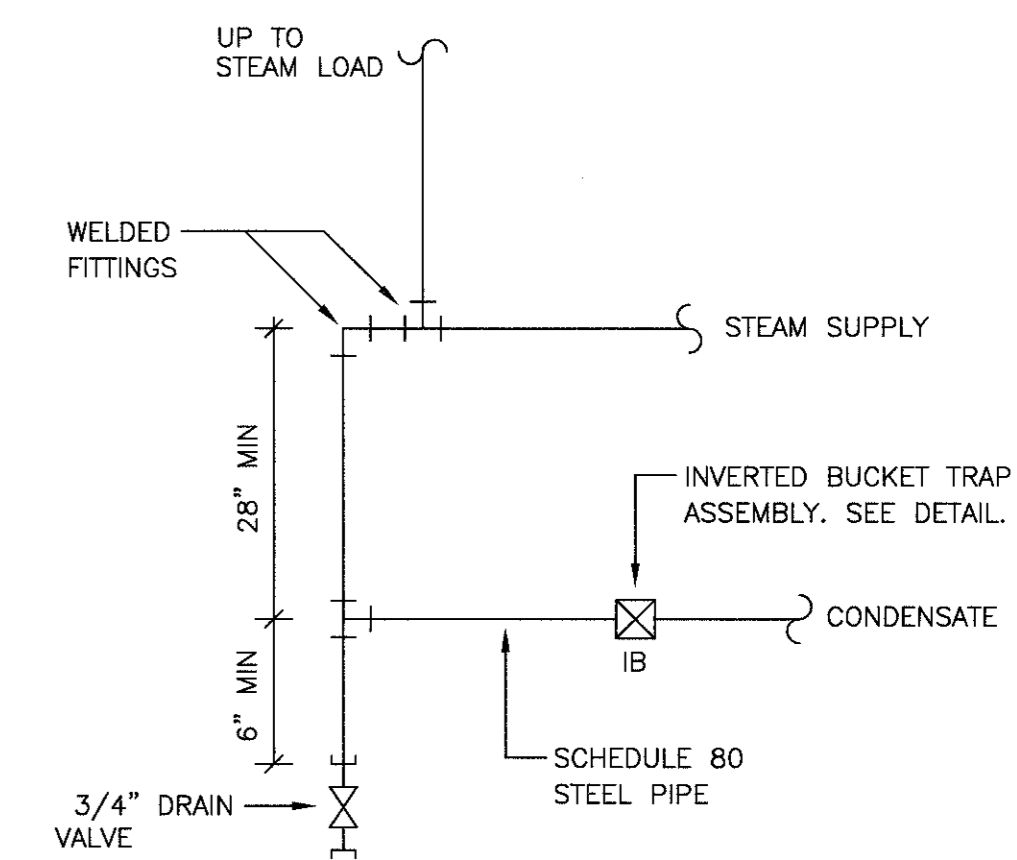
1 DE-IONIZED WATER TANK SCHEMATIC
NTS PARALLEL ARRANGEMENT



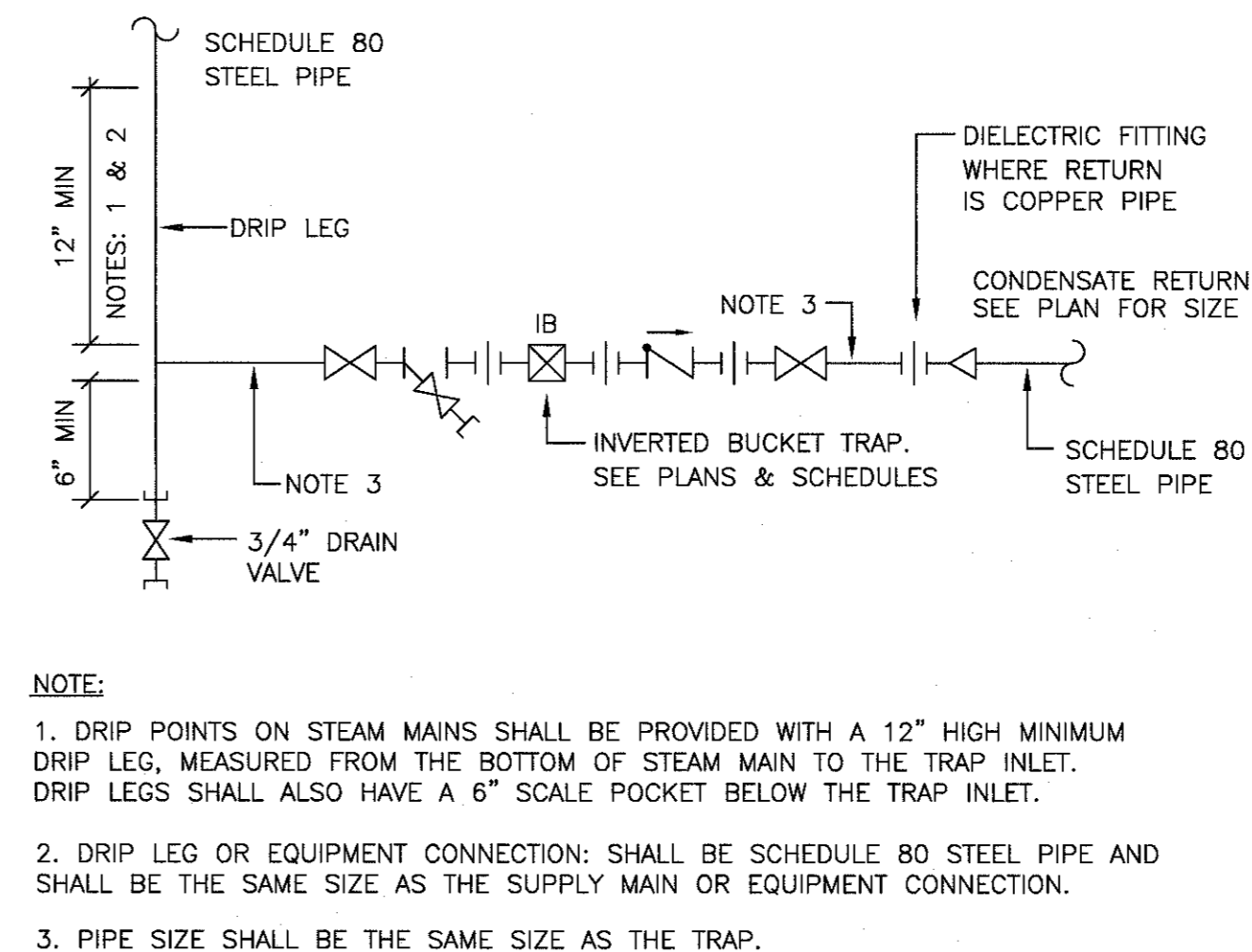
2 SECURING HANGER RODS IN CONCRETE
NOT TO SCALE



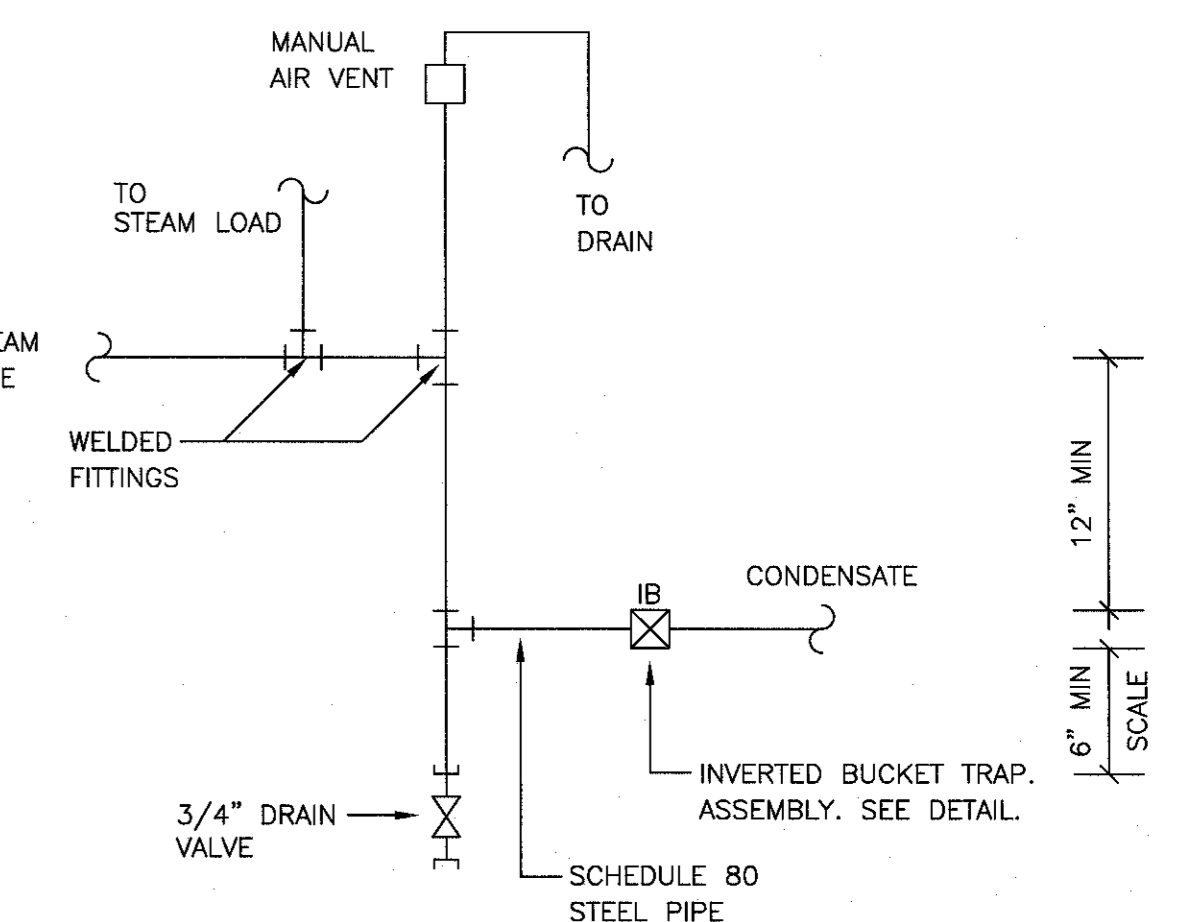
4 FLOAT AND THERMOSTATIC STEAM TRAP ASSEMBLY
NOT TO SCALE



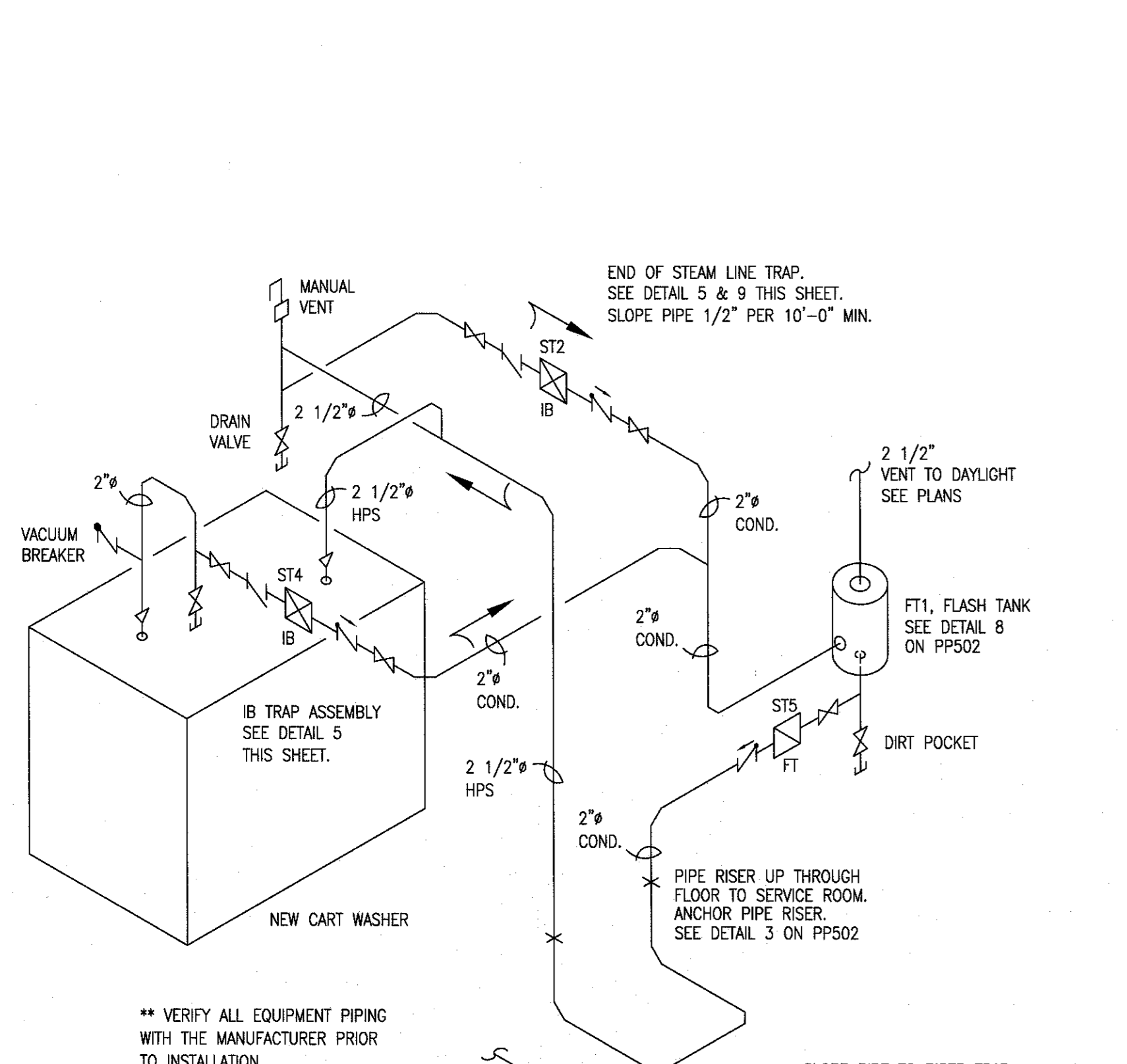
8 STEAM RISER TRAP ASSEMBLY
NTS



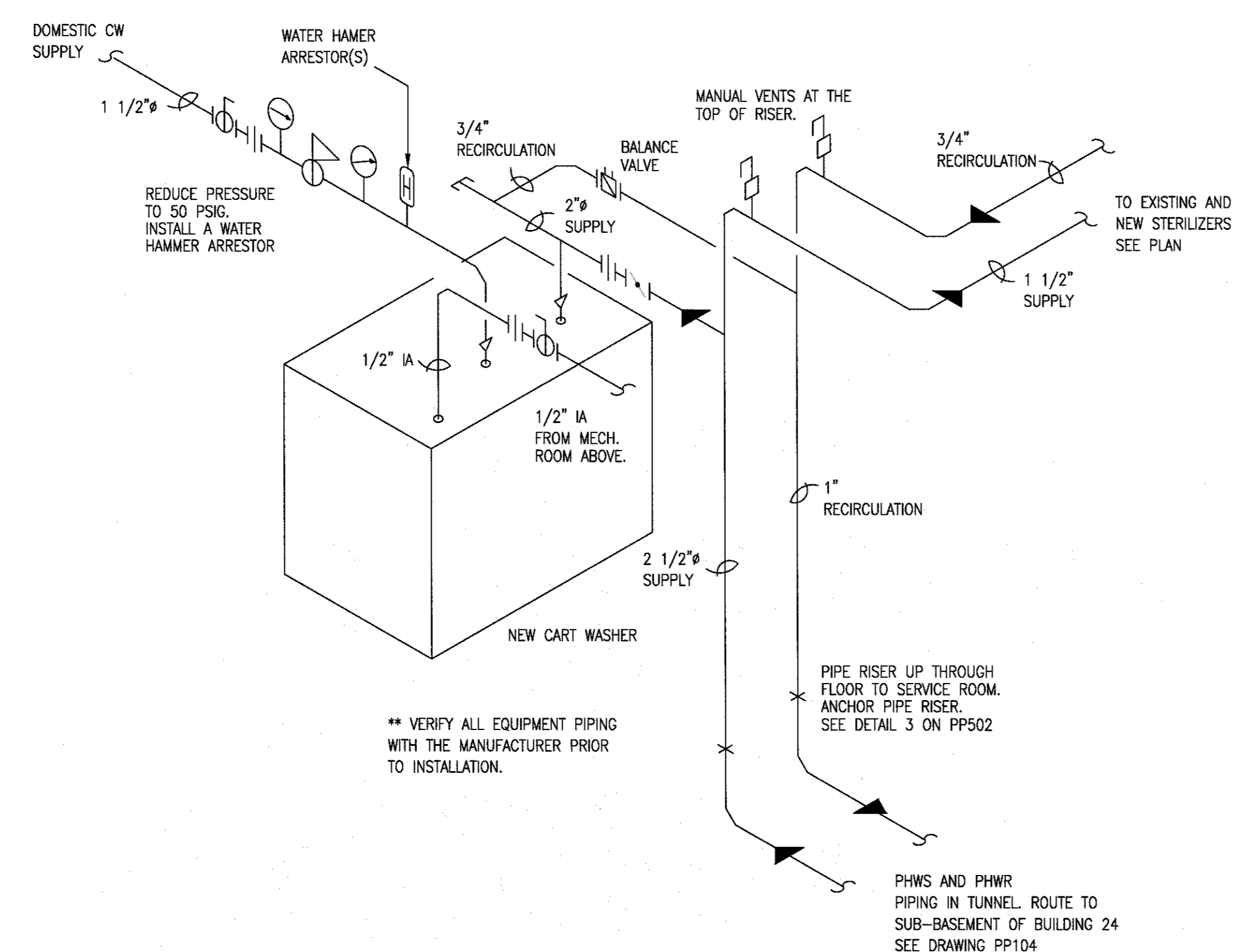
5 INVERTED BUCKET STEAM TRAP ASSEMBLY
NTS



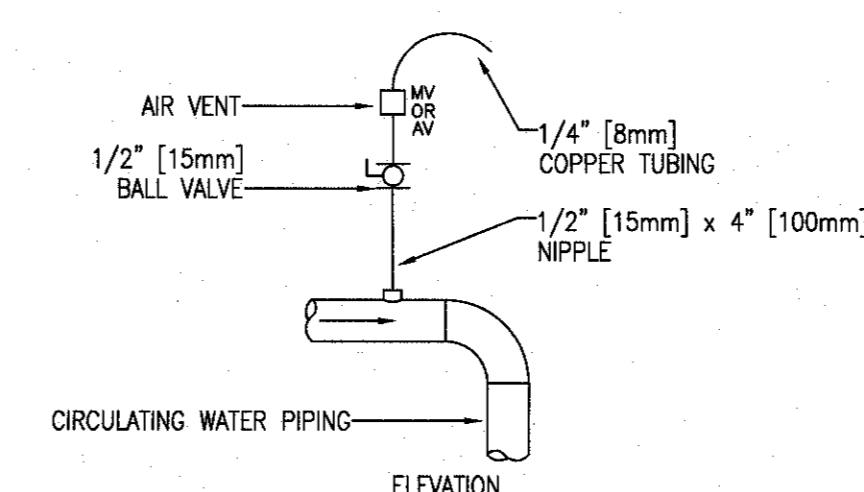
9 END OF STEAM LINE DRIP TRAP
NTS



3 STEAM SUPPLY + CONDENSATE RETURN ISOMETRIC FOR NEW CART WASHER
NOT TO SCALE



6 PROCESS HW AND DOMESTIC CW, AND COMPRESSED AIR ISOMETRIC AT CART WASHER
NOT TO SCALE



7 MANUAL AIR VENT
NOT TO SCALE

Revisions Date	CONSULTANTS:		ARCHITECT/ENGINEERS: PARADIGM ENGINEERS AND CONSTRUCTORS 200 Envoy Circle #201, Louisville KY 40299 - PH: 502.339.8511 - www.paradigmusa.com	Drawing Title PLUMBING DETAILS Approved Project Director Control Number: VA256-14-C-0112 PO Number: C40110	Project Title RENOVATE STERILE PROCESSING SERVICES Location JACK C. MONTGOMERY VAMC 811 HONOR HEIGHTS DRIVE, MURKESBORO, NC Date 3/10/2015 Checked KLP Drawn JDF	Project Number 623-14-103 Building Number 1 Drawing Number PP501	Office of Construction and Facilities Management Department of Veterans Affairs
--------------------------	---------------------	--	---	--	---	--	---