

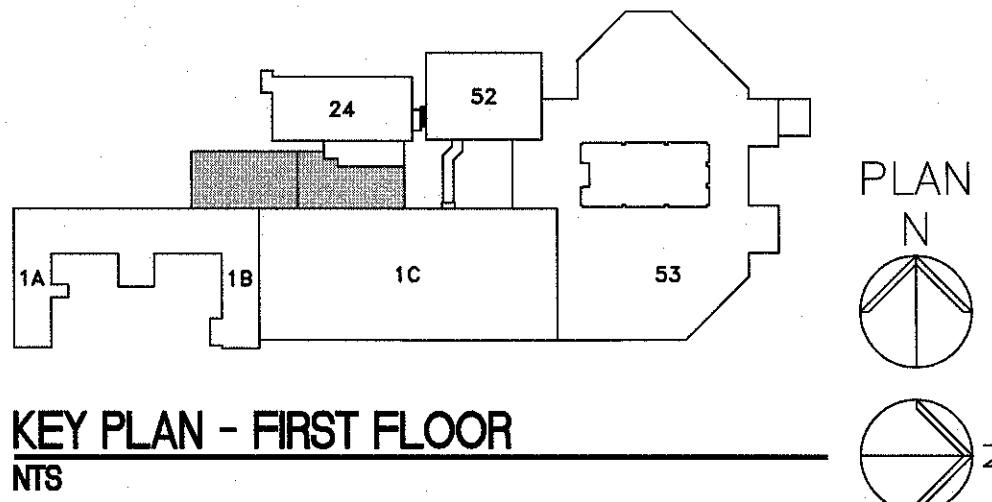
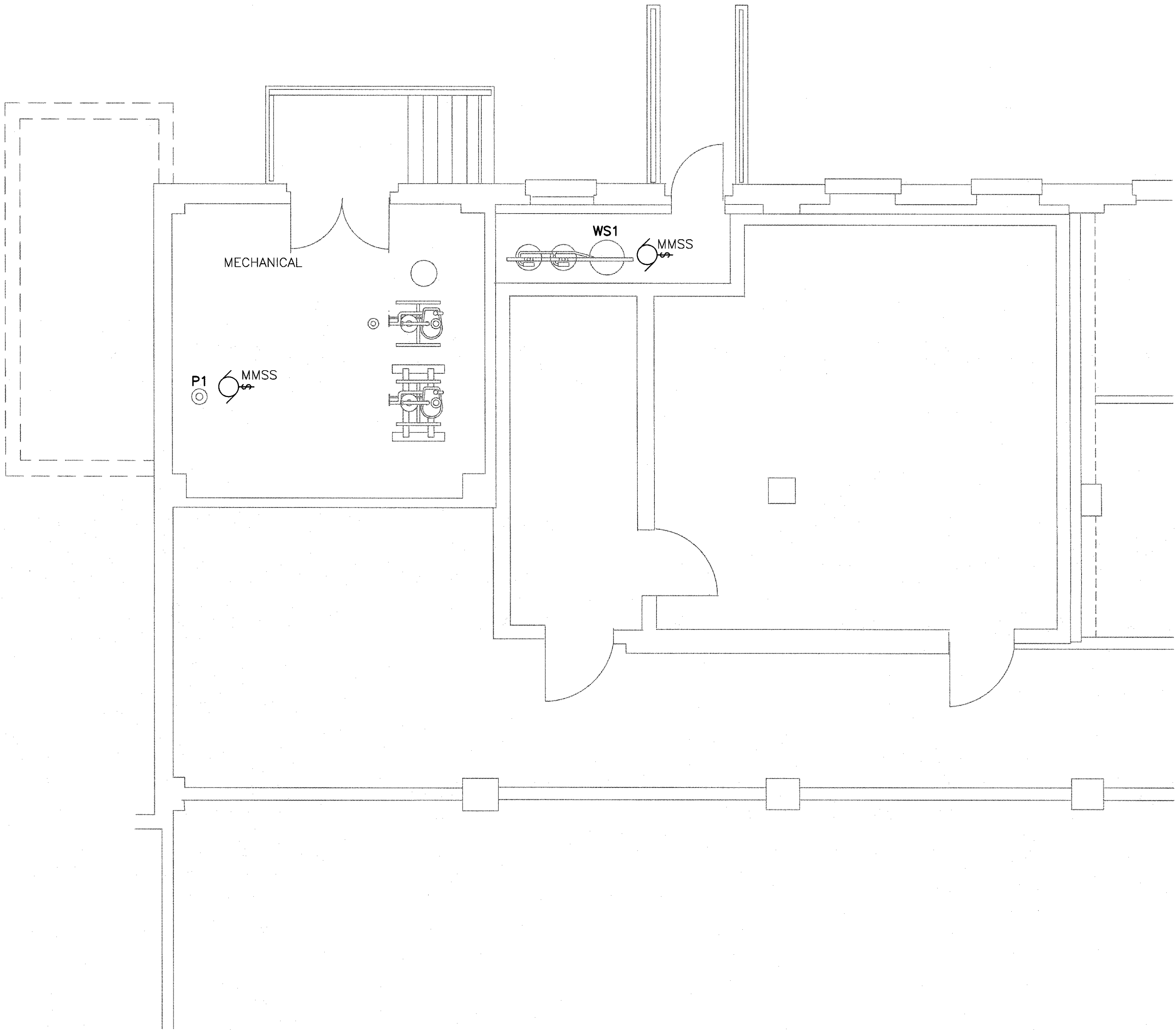
one eighth inch = one foot  
one quarter inch = one foot  
three eighths inch = one foot  
one half inch = one foot  
three quarters inch = one foot  
one inch = one foot  
one and one half inches = one foot  
two inches = one foot  
three inches = one foot

EQUIPMENT SCHEDULE															
ITEM	DESCRIPTION	VOLTAGE	PHASE	HP	STARTER	DISCONNECT	CONNECTION TYPE	MOUNTING HEIGHT	PANEL FED FROM	CIRCUIT NUMBER	CONDUIT SIZE	WIRE SIZE	GROUND SIZE	CIRCUIT BREAKER	CIRCUIT BREAKER
WS1	WATER SOFTENER	120	1	FRAC.	NONE	20 AMP MOTOR RATED SWITCH	FLEXIBLE CONDUIT FROM JUNCTION BOX AT MOTOR	FIELD COORDINATE	VERIFY AT SITE	-	3/4"	2#12	1#12	20/1	1
P1	PUMP	120	1	FRAC.	NONE	20 AMP MOTOR RATED SWITCH	FLEXIBLE CONDUIT FROM JUNCTION BOX AT MOTOR	FIELD COORDINATE	VERIFY AT SITE	-	3/4"	2#12	1#12	20/1	1

NOTES:  
1. THE ELECTRICAL CONTRACTOR SHALL ROUTE CIRCUITING TO NEAREST ELECTRICAL PANEL WITHIN ARE, CONNECT TO SPARE 20/1 CIRCUIT BREAKER WITHIN PANEL, IF NONE AVAILABLE THEN PROVIDE NEW CIRCUIT BREAKER WITHIN EXISTING PANEL.

GENERAL ELECTRICAL POWER PLAN NOTES

- A. REFER TO E-001 FOR ELECTRICAL LEGEND, GENERAL NOTES, AND ABBREVIATIONS.
- B. SOME WORK UNDER THIS CONTRACT WILL REQUIRE WORK DUTIES TO BE PERFORMED AFTER NORMAL WORKING HOURS. DETERMINATION OF SPECIFIC WORK DUTIES TO BE PERFORMED AFTER HOURS SHALL BE MADE BY VA STAFF AT THEIR CONVENIENCE. POSSIBLE WORK REQUIRING AFTER HOURS APPROVAL INCLUDES, BUT IS NOT LIMITED TO: POWER OUTAGES, DISRUPTION OF SERVICES, EXTREME NOISE AND / OR VIBRATION, CUTTING AND PATCHING OF CONCRETE AND DELIVERIES OF EQUIPMENT.
- C. REFER TO DRAWING EP101 FOR NEW WORK IN THIS AREA.
- D. DEVICES AND EQUIPMENT SHOWN SHALL BE REMOVED UNLESS NOTED OTHERWISE.
- E. SCOPE OF WORK SHALL BE LIMITED TO AREAS INDICATED ON FLOOR PLAN.



F1 PARTIAL SUB-BASEMENT PLAN - BUILDING 24  
3/16" = 1'-0"

Revisions		Date	CONSULTANTS:			ARCHITECT/ENGINEERS:		Drawing Title ELECTRICAL POWER PLAN SUB-BASEMENT BLDG. 24		Project Title RENOVATE STERILE PROCESSING SERVICES		Project Number 623-14-103		Office of Construction and Facilities Management 	
						 200 Envoy Circle #201, Louisville KY 40299 ~ PH: 502.339.8511 ~ www.paradigmusa.com		Approved Project Director		Control Number VA256-14-C-0112		Location JACK C. MONTGOMERY VAMC 101 HONOR HEIGHTS DRIVE, MUSKOGEE, OK 74401			
								PO Number C40110		Date 03/10/2015		Checked WLM		Drawn MMF	
												Building Number 1		Drawing Number E-103	



### NOTES

- A. REFER TO SHEET E-001 FOR ELECTRICAL LEGEND, GENERAL NOTES, AND ABBREVIATIONS.
- B. REFER TO ELECTRICAL SHEETS FOR DETAIL LOCATIONS.
- C. NEW CIRCUIT BREAKERS ADDED TO EXISTING PANELS SHALL BE OF SAME TYPE.

PANEL INFORMATION				PANEL LP1D				PANEL RATING & FEEDER				100 AMPS			
MAIN TYPE				MCB				PANEL AMPACITY:				[EXISTING]			
VOLTAGE				120/ 208				PHASE CONDUCTORS:				[EXISTING]			
MOUNTING				SURFACE				NEUTRAL				[EXISTING]			
AIC RATING				10000				# OF SETS				[EXISTING]			
ENCLOSURE TYPE				NEMA-1				SOURCE: T-RS							

CKT	DESCRIPTION	CB AMPS	WIRE SIZE	LOAD IN VOLT AMPS (VA)				PHASE	LOAD IN VOLT AMPS (VA)				WIRE SIZE	CB AMPS	DESCRIPTON	CKT
				LTG (125%)	RECEPT.	KITCHEN	MISC		MISC	KITCHEN	RECEPT.	LTG (125%)				
1	RECEPTACLES RM. 1E8 9EXISTING)	20	#12		800			A			800		#12	20	RECEPTACLES (EXISTING)	2
3	DRINKING FOUNTAIN 9EXISTING)	20	#12		800			B					#12	20	LIGHTING (EXISTING)	4
5	RECEPTACLES RM. 1E8 (EXISTING)	20	#12		800			C			800	1000	#12	20	RECEOTACLES (EXISTING)	6
7	RECEPTACLES (EXISTING)	20	#12		800			A				1000	#12	20	LIGHTING (EXISTING)	8
9	EXISTING LOAD	20	#12				1000	B				1000	#12	20	LIGHTING (EXISTING)	10
11	RECEPTACLES (EXISTING)	20	#12		800			C			800		#12	20	RECEPTACLES (EXISTING)	12
13	WASHER ROOM 1E1 (EXISTING)	20	#12				1000	A			800		#12	20	RECEPTACLES (EXISTING)	14
15	RECEPTACLES (EXISTING)	20	#12		800			B			800		#12	20	RECEPTACLES (EXISTING)	16
17	RECEPTACLES + SINKS (NEW) **	20	#12		960			C			800		#12	20	ELEV. PENTHOUSE RECEPT. (EXISTING)	18
19	LIGHTING HOIST WAY (EXISTING)	20	#12	1000				A			800		#12	20	RECEPTACLES (EXISTING)	20
21	ULTRASONIC MACHINE (EXISTING)	60	#6				4992	B				1000	#12	20	LIGHTING (EXISTING)	22
23	-	-	-				4992	C				1000	#12	20	LIGHTING (EXISTING)	24
TOTAL LOADS				1000	5760	0	11984		0	0	5600	5000	TOTAL LOADS			

PANEL NOTES

EXISTING PANEL

\*\* ADD NEW CIRCUIT BREAKER TO PANEL, NEW CIRCUIT BREAKER TYPE SHALL MATCH EXISTING


LOAD CALCULATION (NEC 2008 - ARTICLE 220)				DEMAND LOAD		kW	
LOAD TYPE	LOAD (kVA)	DEMAND %					
LIGHTING	6.00	1.25					
RECEPTALCES	10.00	1.00		7.5		kW	
RECEPTACLES > 10K	1.36	0.50					
KITCHEN EQUIPMENT	0.00	0.65		0.0		kW	
MISC.		11.98		12.0		kW	
TOTAL kW DEMAND				30.16		kW	
TOTAL DEMAND AMPS	@ 100%			83.72689192		AMPS	

**FULLY SPRINKLED  
BID DOCUMENTS  
FOR CONSTRUCTION**

---

**Office of  
Construction  
and Facilities  
Management**

---

 **Department of  
Veterans Affairs**