

one inch = one foot

three-quarters inch = one foot

one-half inch = one foot

three-eighths inch = one foot

one-quarter inch = one foot

one-eighth inch = one foot

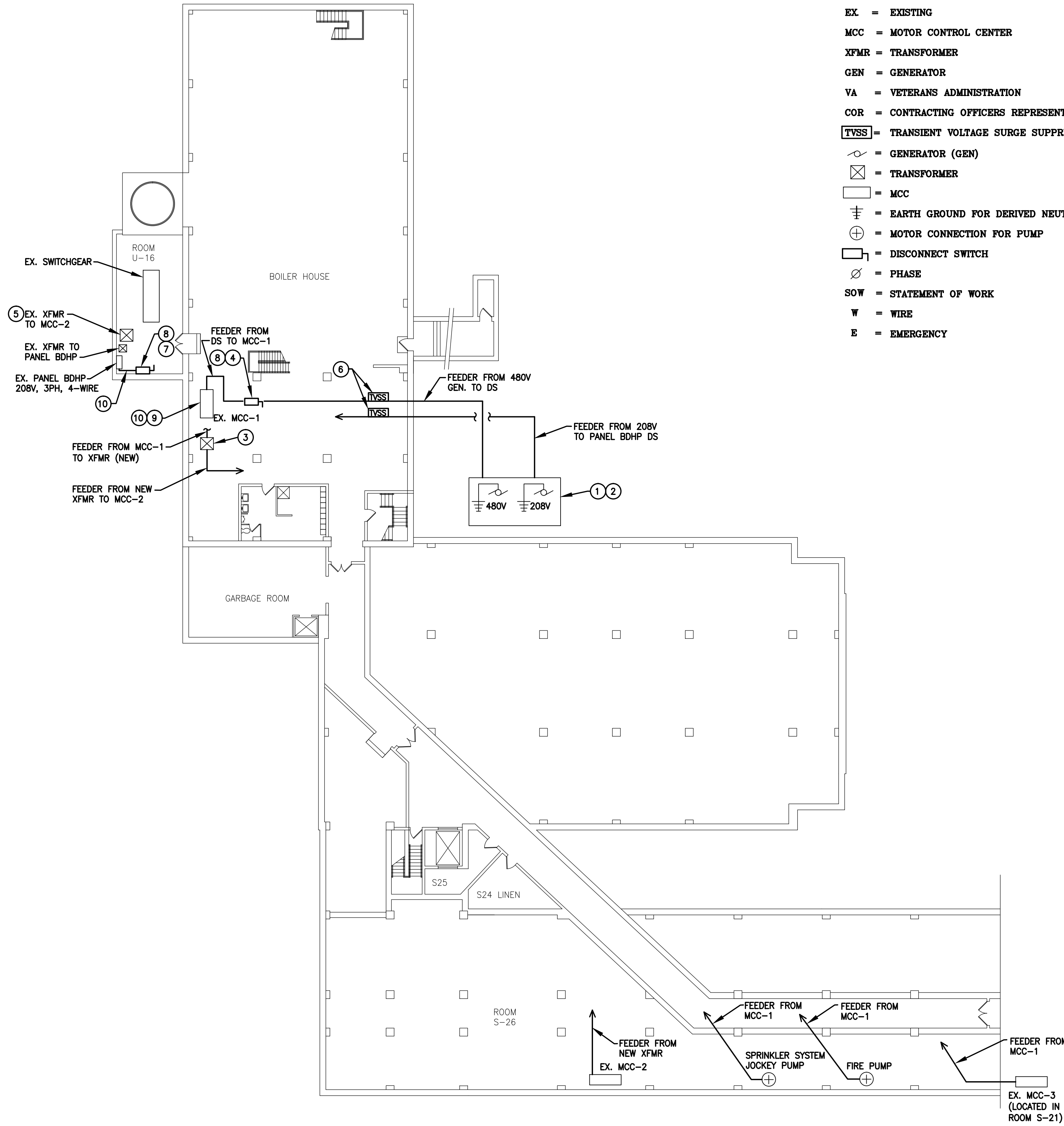
A

B

C

D

E



BLDG 6 SUB-BASEMENT PLAN
SCALE: 1/16"=1'-0"

DEFINITIONS

- EX = EXISTING
MCC = MOTOR CONTROL CENTER
XFMR = TRANSFORMER
GEN = GENERATOR
VA = VETERANS ADMINISTRATION
COR = CONTRACTING OFFICERS REPRESENTATIVE
TVSS = TRANSIENT VOLTAGE SURGE SUPPRESSION
⎓ = GENERATOR (GEN)
⊠ = TRANSFORMER
□ = MCC
⏏ = EARTH GROUND FOR DERIVED NEUTRAL
⊕ = MOTOR CONNECTION FOR PUMP
⎓ = DISCONNECT SWITCH
∅ = PHASE
SOW = STATEMENT OF WORK
W = WIRE
E = EMERGENCY

GENERAL NOTES

- A. THIS DRAWING IS DIAGRAMMATIC, REFER TO STATEMENT OF WORK (SOW) FOR DESIGN AND CONSTRUCTION CRITERIA.
B. ALL SHUTDOWNS SHALL BE COORDINATED WITH THE VA 2 WEEKS IN ADVANCE IN WRITING. THE ACTUAL DATE MAY HAVE TO MOVE FORWARD OR BACK AS THE EXISTING SWITCHGEAR FEEDS THE BOILER FOR THE FACILITY.
C. REFER TO SOW AND VA SPECS FOR DESIGN AND CONSTRUCTION.
D. WITH THE EXCEPTION OF THE UTILITY SHUTDOWN, THE WORK SHALL TAKE PLACE DURING NORMAL BUSINESS HOURS, 7AM TO 4PM M-F, THE SHUTDOWN WILL TAKE PLACE OVER THE WEEKEND.
E. LENGTHS AND LOCATIONS OF CONDUIT RUNS IN SOW AND ON PLAN ARE APPROXIMATE FOR BIDDING. CONTRACTOR SHALL MEASURE AND ROUTE ALL CONDUIT RUNS. CONTRACTOR MAY WALK SITE WITH VA COR PRIOR TO BIDDING.
F. ALL PENETRATIONS SHALL BE SEALED (INTERIOR AND EXTERIOR) TO MATCH EXISTING CONDITIONS.

DRAWING NOTES

1. APPROXIMATE LOCATION OF 480V & 208V GENERATORS (NOT IN THIS CONTRACT). COORDINATE WITH VA AND GENERATOR RENTAL COMPANY.
2. CONTRACTOR SHALL MAKE CONNECTIONS TO GENERATOR INCLUDING CONDUIT, CONDUCTORS AND GROUNDING AT EACH GENERATOR TO PROVIDE AN EARTH GROUND AND A NEUTRAL. THE GENERATOR RENTAL COMPANY WILL ONLY PROVIDE THE GENERATORS AND THIS CONTRACT IS RESPONSIBLE FOR ALL OTHER CONNECTIONS.
3. NEW TRANSFORMER BETWEEN MCC-1 AND MCC-2. REFER TO SOW FOR DESIGN CRITERIA. PROVIDE NEW 6" REINFORCED CONCRETE PAD FOR NEW XFMR.
4. NEW DISCONNECT SWITCH SHALL BE MOUNTED ON UNI-STRUT IN FRONT OF MCC-1. ALL CLEARANCES AS PER NFPA-70. REFER TO SOW FOR DESIGN CRITERIA.
5. EXISTING TRANSFORMER FROM EXISTING SWITCHGEAR TO MCC-2 SHALL BE ABANDONED WHEN SWITCHOVER TO NEW XFMR IN THIS CONTRACT.
6. PROVIDE IN-LINE SURGE SUPPRESSION PER NFPA 70 BETWEEN LOAD SIDE OF GENERATOR TO MCC-1 AND PANEL BDHP.
7. DS FOR PANEL BDHP. ALL CLEARANCES PER NFPA 70.
8. DS SHALL BE CONNECTED TO MCC-1 AND BDHP RESPECTIVELY. THE DS WILL BE NORMALLY OPEN AS THE MCC-1 AND PANEL BDHP ARE POWERED THROUGH EXISTING SWITCHGEAR IN ROOM U-16. SHOULD THE EXISTING SWITCHGEAR FAIL, THE DS WILL BE MANUALLY CLOSED AND THE GENERATORS ENERGIZED TO BYPASS THE EXISTING SWITCHGEAR.
9. REFER TO SOW FOR BUCKETS IN MCC-1 TO FEED ALL LOADS 480V: MCC-2 (XFMR), MCC-3, FIRE PUMP AND SPRINKLER JOCKEY PUMP.
10. PROVIDE A SECOND SET OF LUGS ON PANEL BDHP TO RUN A FEEDER FROM THE 208V GENERATOR THROUGH THE NEW DS TO THE PANEL BDHP. SHOULD NORMAL POWER FAIL, THE GENERATOR WILL BE ENERGIZED MANUALLY AND THE DS WILL BE CLOSED TO FEED PANEL BDHP WITH EMERGENCY POWER.

<div>Issue For Bid</div> <div>Revisions</div> <div>1/19/16</div> <div>Date</div>		VA WESTERN NEW YORK HEALTHCARE SYSTEM 3495 BAILEY AVENUE BUFFALO, NEW YORK 14215				CLINICAL ENGINEERING		DATE	ENGINEERING MANAGER	DATE	Drawing Title BUILDING 6 SUB-BASEMENT FLOOR PLAN		Project Title TEMPORARY GENERATOR CONNECTIONS		Date JANUARY 19, 2016	
		INFECTION CONTROL		DATE	CARELINE MANAGER	DATE	MEDICAL CENTER DIRECTOR		DATE	Building Number 1		Checked MB	Drawn RLR	Station No. 528		
		SAFETY OFFICER		DATE	CHIEF OF STAFF	DATE	ASSOCIATE MEDICAL CENTER DIRECTOR		DATE	Location V.A.M.C. BUFFALO, NEW YORK		<div>16-S14 E101</div> <div>Office of Facilities</div> <div>Department of Veterans Affairs</div>				