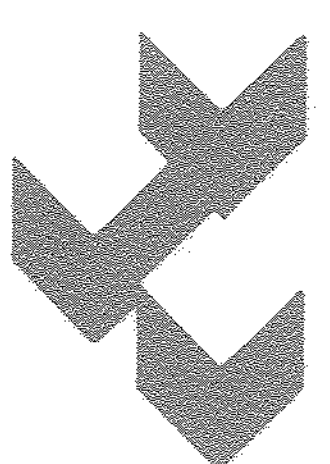


Revisions	Date	Description	Date


**AS-BUILT** 9/2/86

**AS-BUILT** 9/2/88

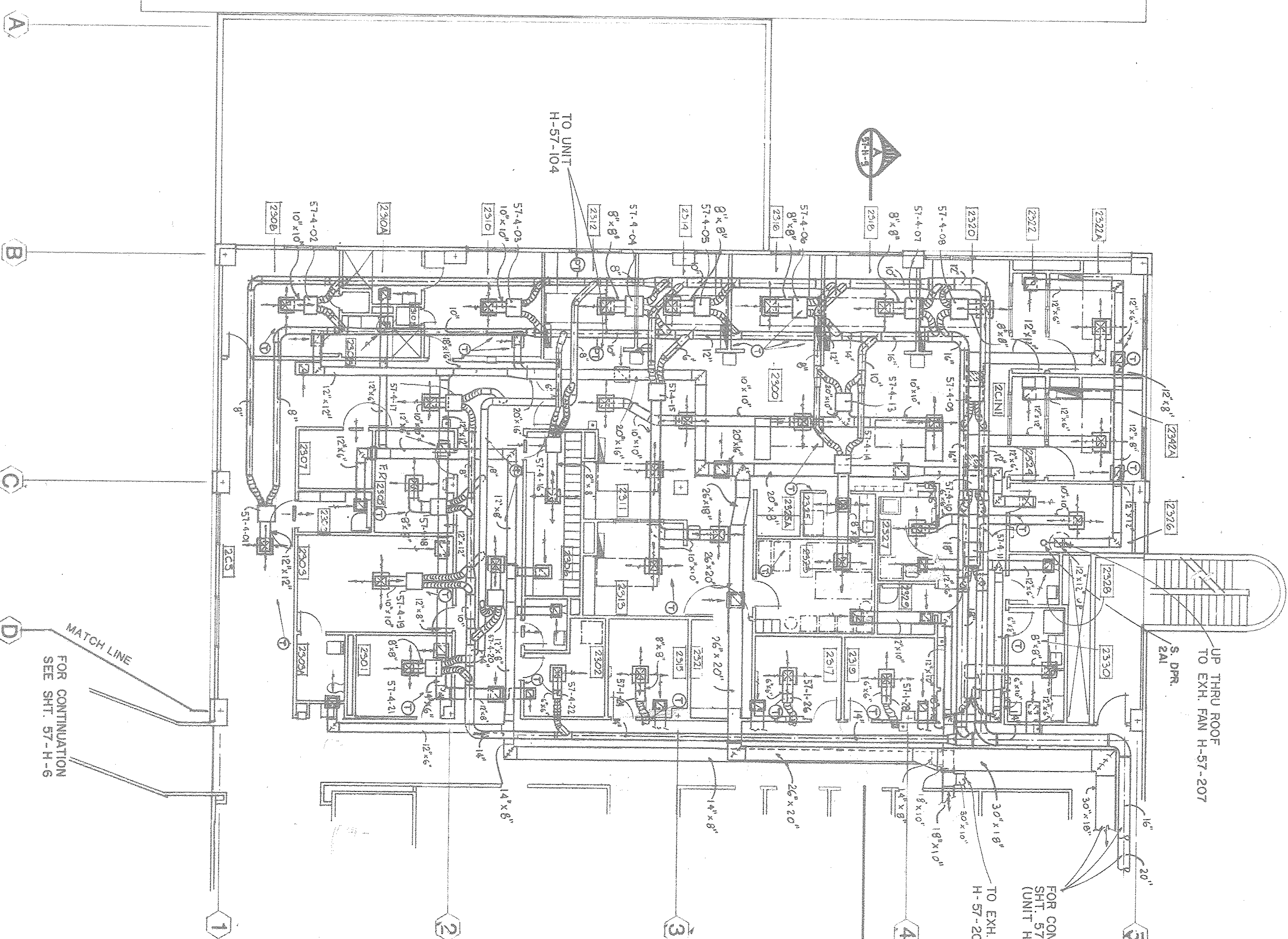


## A Tucson Joint Venture

**Finical & Dombrowski and Friedman Keim & McFerron AIA**  
732 North Stone Avenue Tucson, Arizona 85705 792-1220



Drawing Title <b>HVAC PLAN</b>		Project Title <b>Clinical Addition</b>	
SECOND FLOOR - NORTH		Project No. <b>076-046</b>	
Approved: <i>[Signature]</i> Project Manager		Date <b>JUN 7 1992</b>	
Drawn <b>PJP</b>	Building Number	DRAWING NO. <b>076-046</b>	
Checked <b>WIN</b>	Location <b>Tucson Arizona</b>	32	



OFFUSERS & RECORDERS SCHEDULE													RETURN/EXHUST AIR			
ROOM NO.	ROOM NAME	SUPPLY AIR					RETURN/EXHUST AIR									
		CFM	NO.	SIZE	TYPE	SYSTEM	CFM	NO.	SIZE	THYEST	SYSTEM	THYEST				
2210	NURSES STATION	820	4	10 X 15	A	H-57-104	2180	4	14 X 14	A	H-57-20					
2210	ADMINISTRATION OFFICE	150	1	8 X 8	A	H-57-104	140	1	10 X 10	A	H-57-20					
2302	EMPLOYEE LOUNGE	120	1	6 X 6	A	H-57-104	120	1	10 X 10	A	H-57-20					
2303	WAITING ROOM	360	1	10 X 10	A	H-57-104	210	1	10 X 10	A	H-57-20					
2304	TOILETS	0	1	18 X 6	D	H-57-104	50	1	10 X 10	B	H-57-20					
2305	CONFERENCE ROOM	140	1	8 X 8	A	H-57-104	50	1	10 X 10	B	H-57-20					
2306	LOCKER ROOM	170	1	8 X 8	A	H-57-104	190	1	10 X 10	A	H-57-20					
2307	STORAGE RM SUP/EXH	0	0	-----	-----	-----	0	0	-----	-----	-----	-----				
2308	ON-CALL	210	1	10 X 10	A	H-57-104	170	1	10 X 10	A	H-57-20					
2309	TOILETS	0	1	18 X 6	D	H-57-104	60	1	10 X 10	B	H-57-20					
2310	JANITOR CLOSET	210	1	10 X 6	D	H-57-104	70	1	10 X 10	B	H-57-20					
2310	ON-CALL	210	1	10 X 10	A	H-57-104	170	1	10 X 10	A	H-57-20					
2310A	TOILETS	0	1	18 X 6	D	H-57-104	60	1	10 X 10	B	H-57-20					
2310B	TOILETS	0	0	-----	-----	-----	0	0	-----	-----	-----	-----				
2311	MULTI BED AREA	130	1	8 X 8	A	H-57-104	0	0	0 A TO RM 300		H-57-20					
2312	MULTI BED AREA	180	1	8 X 8	A	H-57-104	0	0	0 A TO RM 300		H-57-20					
2313	MULTI BED AREA	130	1	8 X 8	A	H-57-104	0	0	0 A TO RM 300		H-57-20					
2314	MULTI BED AREA	150	1	8 X 8	A	H-57-104	0	0	0 A TO RM 300		H-57-20					
2315	MULTI BED AREA	150	1	8 X 8	A	H-57-104	0	0	0 A TO RM 300		H-57-20					
2316	MULTI BED AREA	180	1	8 X 8	A	H-57-104	0	0	0 A TO RM 300		H-57-20					
2317	MULTI BED AREA	180	1	8 X 8	A	H-57-104	0	0	0 A TO RM 300		H-57-20					
2321	LINEN CLEAN	0	0	-----	-----	-----	0	0	0 A TO RM 300		H-57-20					
2322	VESTIBULE	0	1	18 X 6	D	H-58-104	60	1	10 X 10	B	H-57-20					
2323	VESTIBULE ROOM	380	1	12 X 12	A	H-57-104	50	1	12 X 12	A	H-57-20					
2324	STORAGE WITH SUPPLY	150	1	8 X 8	A	H-57-104	170	1	10 X 10	A	H-57-20					
2325	VESTIBULE	0	1	18 X 6	D	H-57-104	60	1	10 X 10	B	H-57-20					
2326A	ISOLATION ROOM	370	1	12 X 12	A	H-57-104	380	1	12 X 12	A	H-57-20					
2327	MEDICATION	100	1	6 X 6	A	H-57-104	0	0	0 A TO RM 250		H-57-20					
2328A	ADMINISTRATION OFFICE	0	0	-----	-----	-----	0	0	-----	-----	-----	-----				
2329	HEAD NURSE	860	1	10 X 10	A	H-57-104	230	1	10 X 10	A	H-57-20					
2332	MULTIPLY ROOM - SOLID	80	1	6 X 6	A	H-57-104	80	1	10 X 10	A	H-57-20					
2338	TOILETS	0	1	18 X 6	D	H-57-104	50	1	10 X 10	B	H-57-20					
2339	JANITOR CLOSET	0	1	18 X 6	D	H-57-104	60	1	10 X 10	B	H-57-20					
2340	LINEN CLEAN	130	1	8 X 8	A	H-57-104	130	1	10 X 10	A	H-57-20					
2341	CONFERENCE GENERAL	330	1	10 X 10	A	H-57-104	0	0	0 A TO RM 2300		H-57-20					
2342	CONFERENCE GENERAL	300	1	10 X 10	A	H-57-104	240	1	10 X 10	A	H-57-20					
2343	CORRIDOR GENERAL	800	2	12 X 12	A	H-57-104	640	1	14 X 14	A	H-57-20					
235	STAIR WAY	0	0	-----	-----	-----	0	0	-----	-----	-----	-----				
2315	ADMINISTRATION OFFICE	130	1	8 X 8	A	H-57-104	130	1	10 X 10	A	H-57-20					
2317	ADMINISTRATION OFFICE	130	1	6 X 6	A	H-57-104	110	1	10 X 10	A	H-57-20					
2318	ADMINISTRATION OFFICE	130	1	6 X 6	A	H-57-104	110	1	10 X 10	A	H-57-20					

NOTE:  
ALL ROOM NUMBERS FOR BUILDING 57  
ARE PREFIXED WITH A "D"

MIXING BOX SCHEDULE				
BLDG NO.	BOX NUMBER	TYPE	TOTAL CFM	INLET SIZE
57	57-1-01	VD	500	8
57	57-1-02	VD	210	5
57	57-1-03	VD	210	5
57	57-1-04	VD	180	5
57	57-1-05	VD	150	5
57	57-1-06	VD	150	5
57	57-1-07	VD	180	5
57	57-1-08	VD	180	5
57	57-1-09	CD	350	8
57	57-1-10	CD	370	8
57	57-1-11	CD	340	8
57	57-1-12	VD	915	5
57	57-1-13	VD	915	10
57	57-1-14	CD	250	6
57	57-1-15	VD	465	5
57	57-1-16	CD	120	6
57	57-1-17	VD	300	6
57	57-1-18	VD	350	5
57	57-1-19	VD	300	6
57	57-1-20	VD	350	6
57	57-1-21	VD	150	5
57	57-1-22	VS	150	5

607-1-1762

