

1 PARTIAL FLOOR PLAN - DEMO - ELECTRICAL  
E101 1/4" = 1'-0"

NORTH

**GENERAL NOTES:**

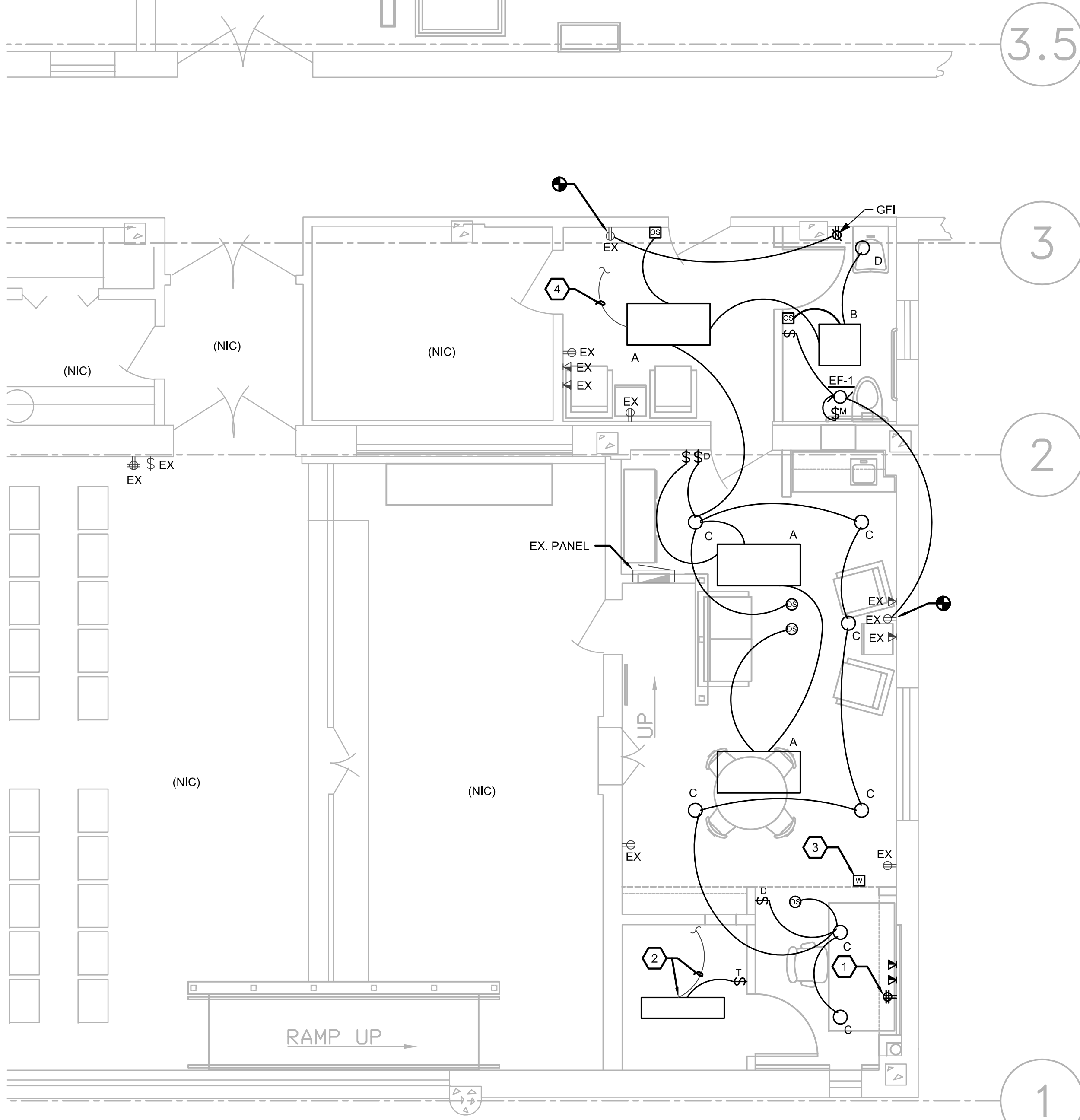
- REFER TO E001 FOR ADDITIONAL INFORMATION.

**NOTES BY SYMBOL: 'O' DEMO**

- REMOVE AND RETAIN EXISTING RECEPTACLE, ASSOCIATED BRANCH CIRCUIT AND CONDUIT TO BE RELOCATED.
- REMOVE AND RETAIN EXISTING WI-FI TRANSMITTER, ASSOCIATED WIRING TO ALLOW INSTALLATION OF NEW CEILING.
- REMOVE AND RETAIN EXISTING LIGHT FIXTURE, ASSOCIATED BRANCH CIRCUIT AND CONDUIT TO BE RELOCATED.

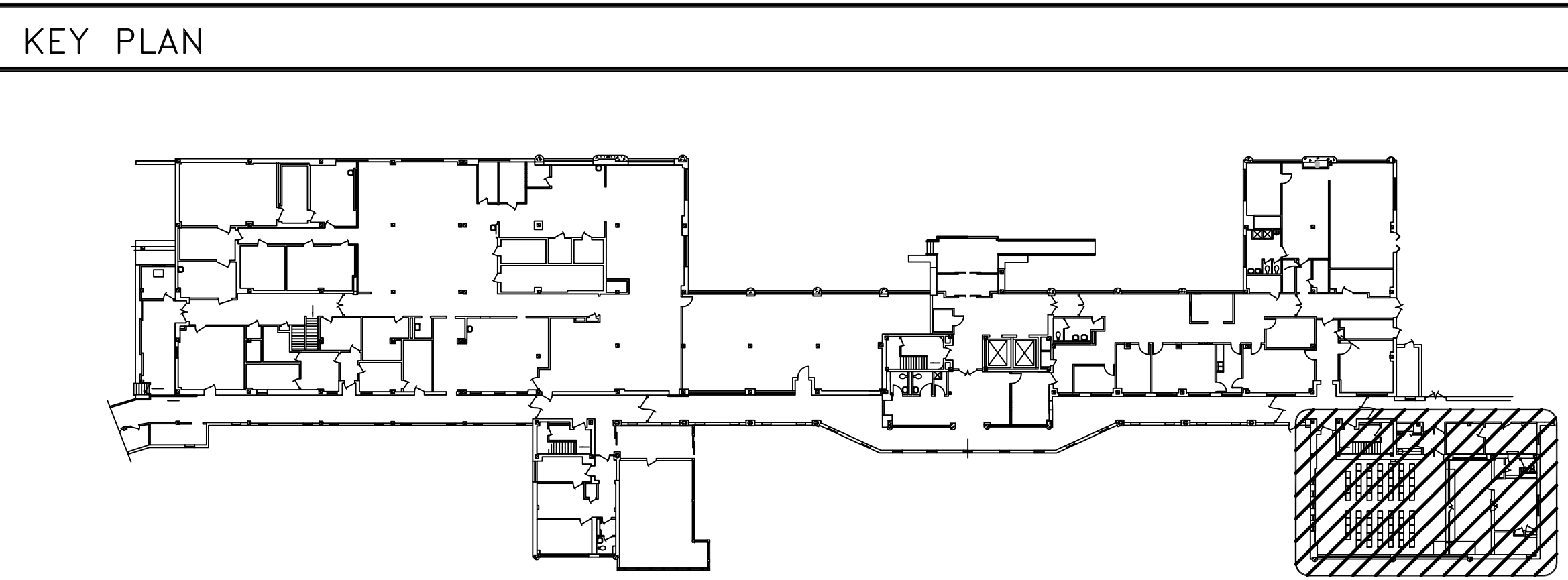
**NOTES BY SYMBOL: '◇'**

- RELOCATED RECEPTACLE, ASSOCIATED BRANCH CIRCUIT WIRING. RECONNECT TO MATCH EXISTING.
- RELOCATED LIGHT FIXTURE, ASSOCIATED BRANCH CIRCUIT WIRING. RECONNECT TO MATCH EXISTING.
- REINSTALLED WI-FI TRANSMITTER, ASSOCIATED WIRING. RECONNECT TO MATCH EXISTING.
- RECONNECT TO EXISTING BRANCH CIRCUIT. RECONNECT TO MATCH EXISTING.



2 PARTIAL FLOOR PLAN - NEW WORK - ELECTRICAL  
E101 1/4" = 1'-0"

NORTH



**100% ISSUE FOR CONSTRUCTION**

Revisions Date	 2201 N Collins, Suite 200 Arlington, Texas 76011-2600 (817) 461-0300 Fax: (817) 461-1025 MECHANICAL - ELECTRICAL - PLUMBING FEI Project No.: 14030	 Architecture ■ Planning ■ Interior Design 4949 Addison Circle ■ Addison, Texas 75001 MPI Project No.: 8140205		Drawing Title <b>PARTIAL FLOOR PLANS - ELECTRICAL</b>	Approved: Area Project Manager	Project Title <b>VA BONHAM CHAPLAIN'S OFFICE RENOVATION</b>		Date 05/30/14		VANTHCS Dallas, Texas	
						Building Number <b>2</b>	Checked SLT	Drawn AOP			Project No. 549-3C-1528
						Location 1201 East Ninth Street Bonham, Texas 75418		Drawing No. <b>E101</b>			Dwg. of