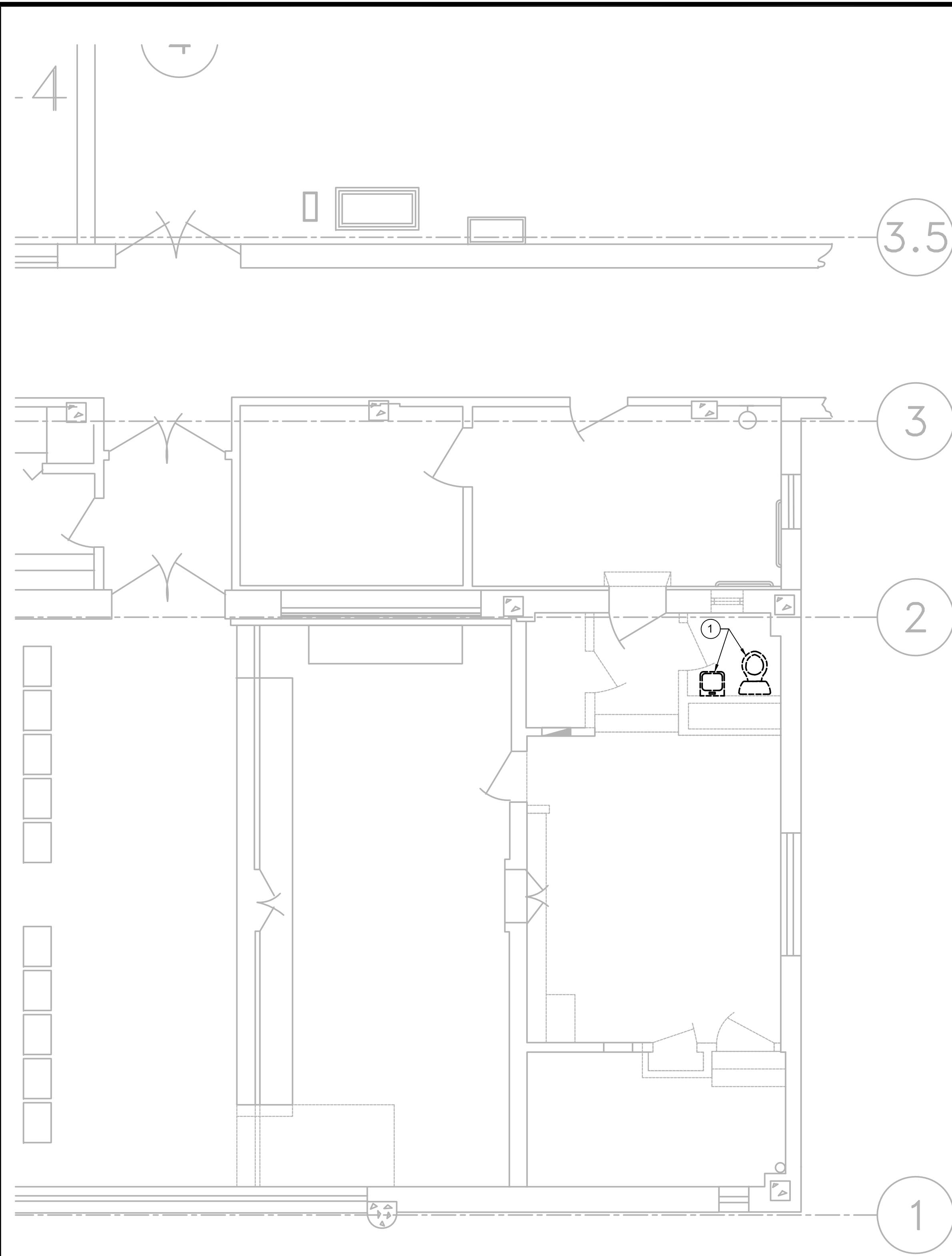


0 6 1 0 2 0 6 0 2 0 6 0 4 0 0 4 0 8 0 4 0 12 0 24

three inches = one foot  
one and one-half inches = one foot  
one inch = one foot  
three-quarters inch = one foot  
one-half inch = one foot  
three-eighths inch = one foot  
one-quarter inch = one foot  
one-eighth inch = one foot

A  
B  
C  
D  
E  
F

Computer Filenames:

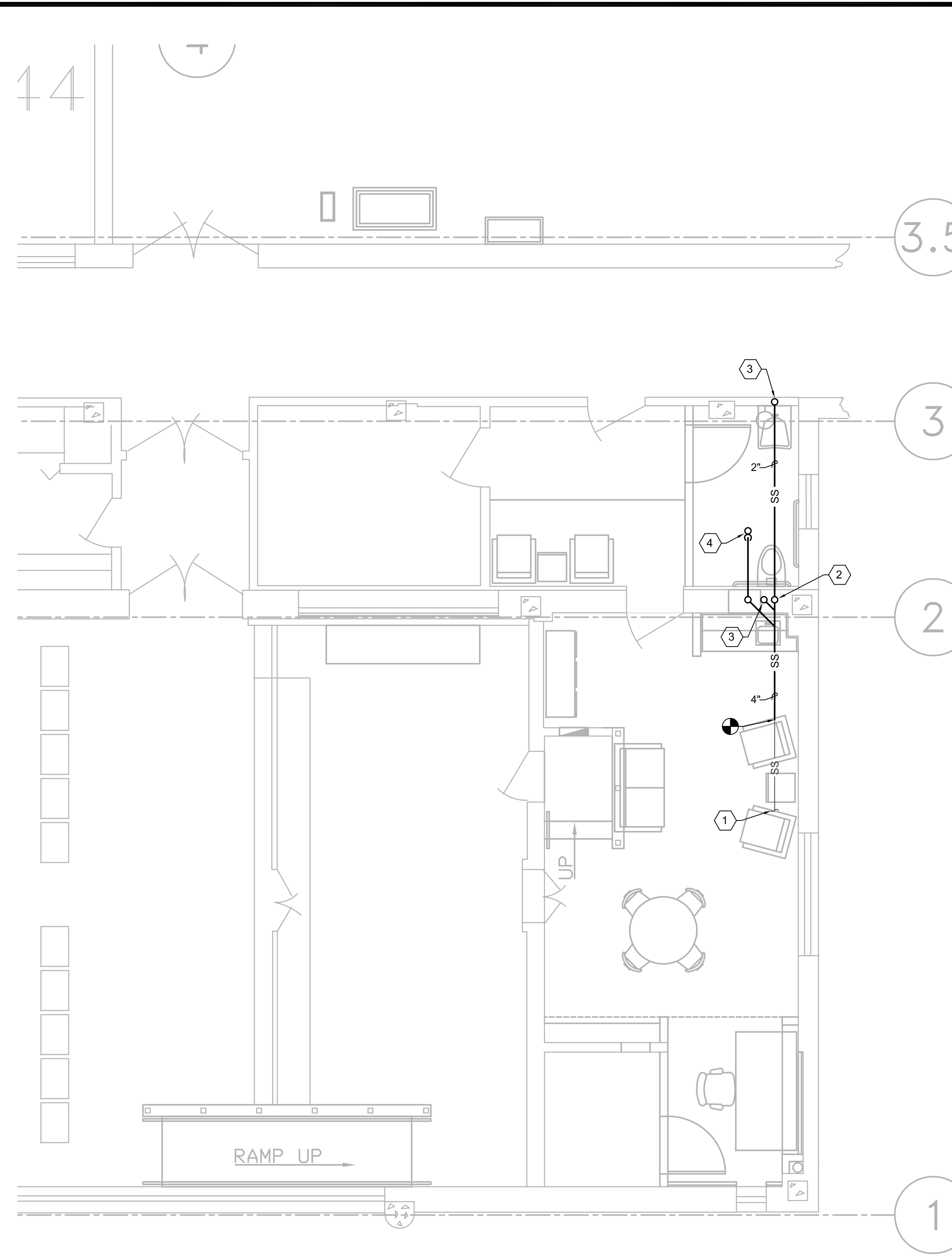


1 PARTIAL FLOOR PLAN - DEMO - PLUMBING  
P101 1/4" = 1'-0"



NOTES BY SYMBOL: "○" - DEMO

1. DEMOLISH EXISTING PLUMBING FIXTURE, PIPING AND ASSOCIATED COMPONENTS. PLUG EXISTING SANITARY SEWER UNDERFLOOR TO MATCH EXISTING FLOW. CAP ALL ASSOCIATED PIPING ABOVE CEILING FOR NEW CONSTRUCTION RE-CONNECTION WHERE APPLICABLE.



2 PARTIAL FLOOR PLAN - NEW WORK - PLUMBING UNDERFLOOR  
P101 1/4" = 1'-0"



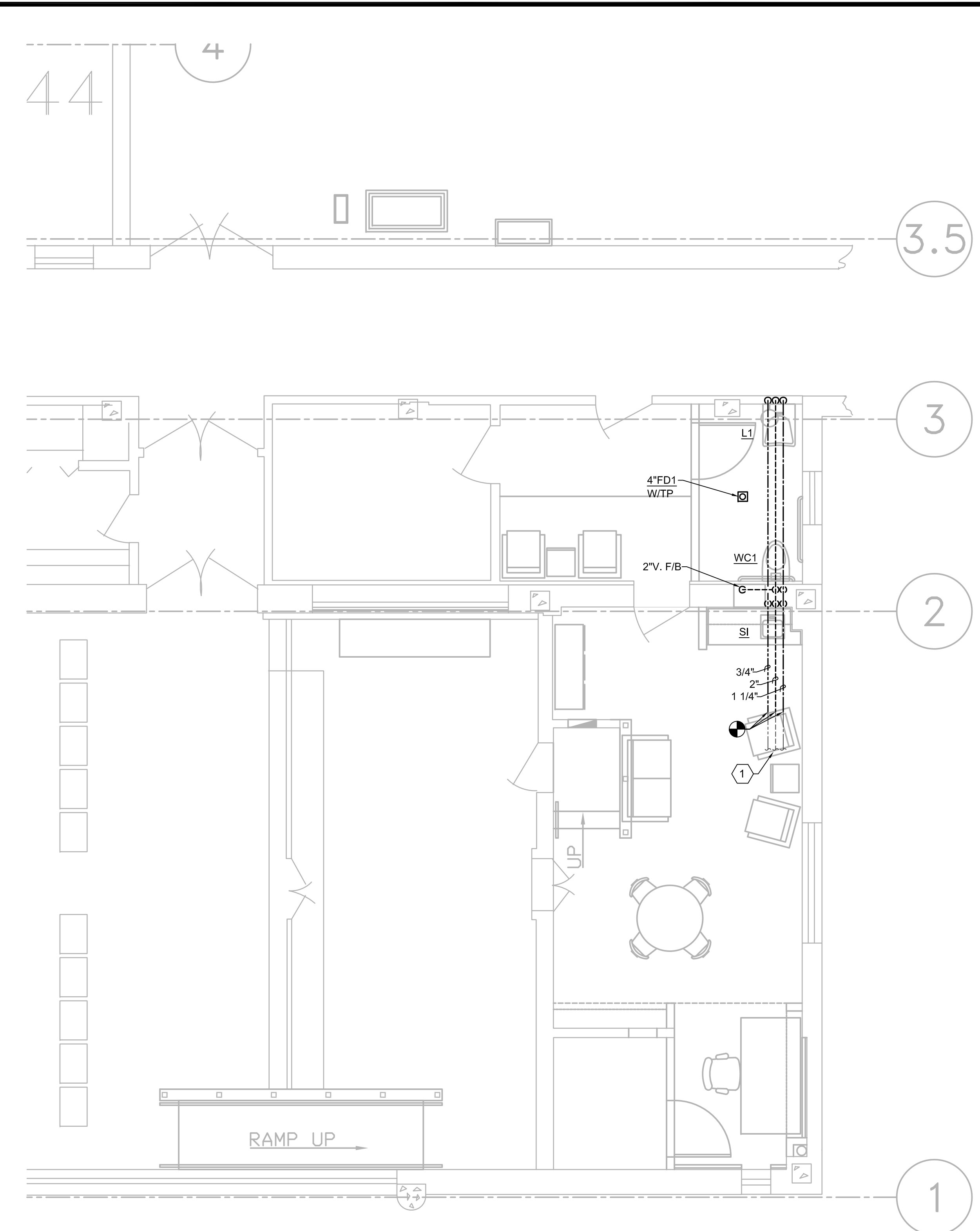
NOTES BY SYMBOL: "◡" - NEW WORK

1. EXISTING UTILITIES. CONTRACTOR SHALL FIELD VERIFY EXACT LOCATION, SIZE AND DEPTH PRIOR TO BIDDING AND CONSTRUCTION.

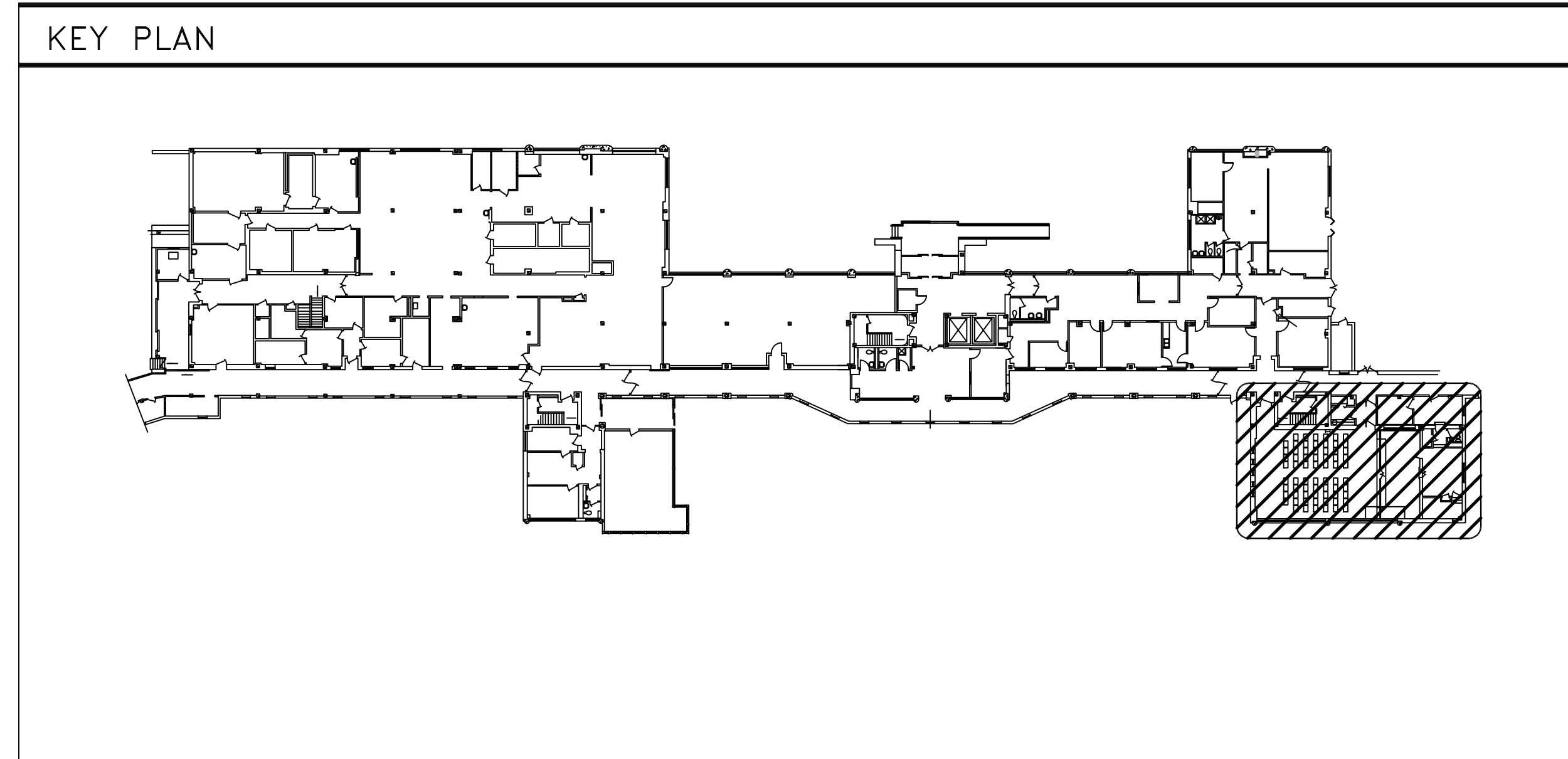
2. 4" WASTE WITH 2" VENT UP TO WATER CLOSET.

3. 2" WASTE AND P-TRAP WITH 1 1/2" VENT UP TO LAVATORY/SINK.

4. 4" WASTE AND P-TRAP WITH 2" VENT UP TO FLOOR DRAIN/SINK.



3 PARTIAL FLOOR PLAN - NEW WORK - PLUMBING  
P101 1/4" = 1'-0"



|                                      |  |   |   |  |  |  |  |   |  |
|--------------------------------------|--|---|---|--|--|--|--|---|--|
| <div>Revisions</div> <div>Date</div> |  | <div><div>2201 N Collins, Suite 205<br/>Arlington, Texas 76011-2659<br/>(817) 461-0333 Fax: (817) 461-1025<br/>MECHANICAL • ELECTRICAL • PLUMBING</div></div> <div>FEI Project No.: 14030</div> | <div><div>Architecture ■ Planning ■ Interior Design<br/>4949 Addison Circle ■ Addison, Texas 75001</div></div> <div>MPI Project No.: 8140205</div> | <div></div> | <div></div> | <div>Drawing Title</div> <div>PARTIAL FLOOR PLANS - PLUMBING</div> <div>Approved: Area Project Manager</div> | <div>Project Title</div> <div>VA BONHAM CHAPLAIN'S OFFICE RENOVATION</div> <div>Building Number</div> <div>2</div> <div>Checked</div> <div>SLT</div> <div>Drawn</div> <div>MJW</div> <div>Location</div> <div>1201 East Ninth Street<br/>Bonham, Texas 75418</div> | <div>Date</div> <div>05/30/14</div> <div>Project No.</div> <div>549-3C-1528</div> <div>Drawing No.</div> <div>P101</div> <div>Dwg. of</div> | <div><div>VANHTCS<br/>Dallas, Texas</div></div> |
|--------------------------------------|--|---|---|--|--|--|--|---|--|

100% ISSUE FOR CONSTRUCTION