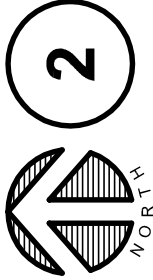


LOWER LEVEL - ENLARGED PLAN - EQUIPMENT POWER

SCALE: 1/4"=1'-0"



KEYNOTES

#

20. REFER TO 4/EP201.1 FOR CONTROL DIAGRAM OF STOVE AND OVEN. CIRCUITS SHOWN ON CONTROL DIAGRAM.

21. COORDINATE WITH OWNER FOR FINAL LOCATION OF TIME SWITCH FOR RANGE CONTROL PRIOR TO INSTALLATION.

ISSUED BY:

K J W
ENGINEERING
CONSULTANTS
Experience you can build on™

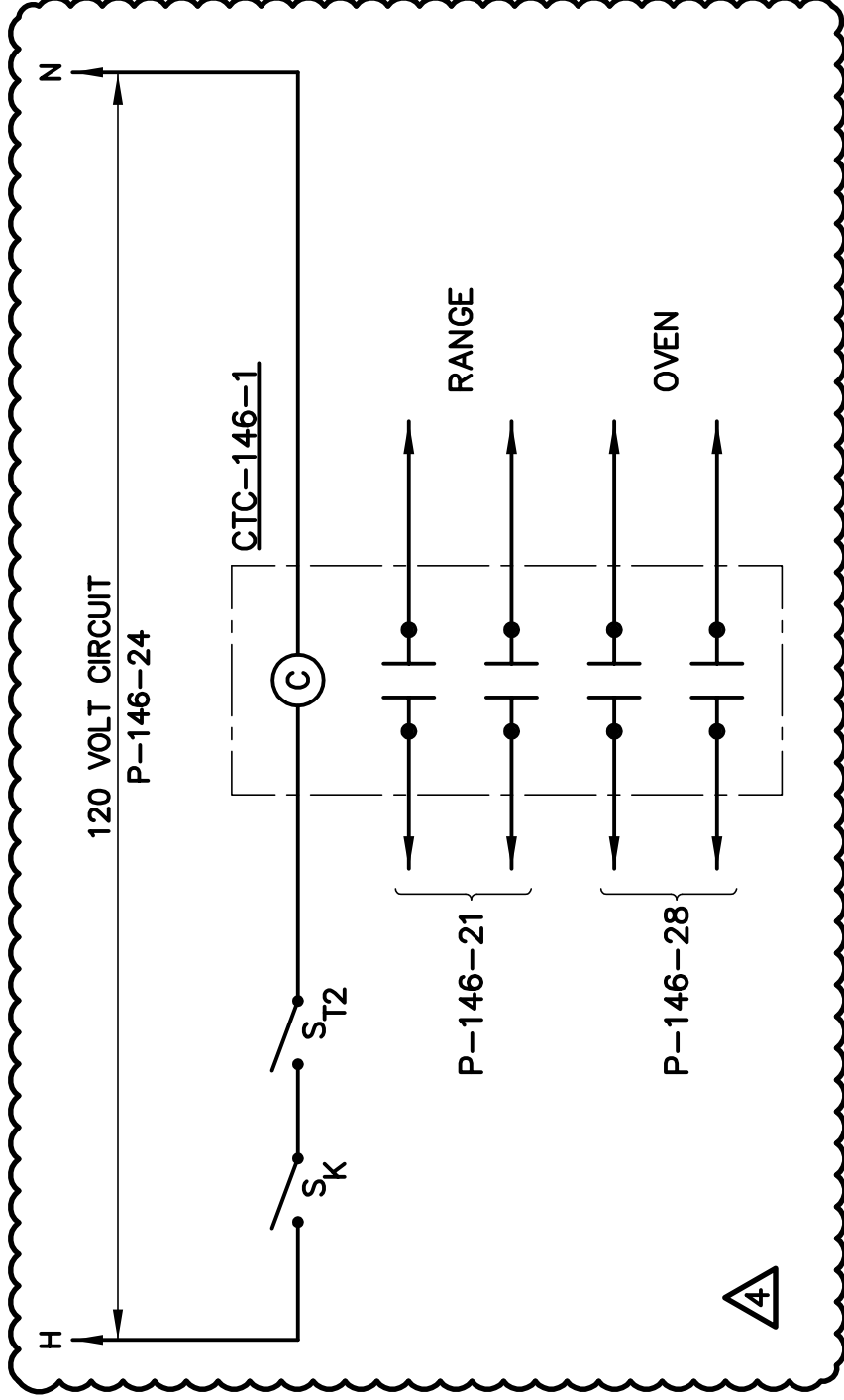
802 WEST BROADWAY, SUITE 312
MADISON, WISCONSIN 53713-1839
608.223.9600
FAX: 608.223.9601
www.kjww.com KJWW #110087.00

VA
Dept. of Veterans Affairs
Medical Center
5000 W. National Avenue
Milwaukee, WI

Issued For: Amendment No. 4
Reference Drawing No: EP201.1
Scale: 1/4" = 1'-0"
Issue Date: 06 September 2011

Project Name: Construct 4 Unit CLC
Project No.: 695-314

DS-E02



CONTROL DIAGRAM

NO SCALE

ISSUED BY:



**ENGINEERING
CONSULTANTS**
Experience you can build on™

802 WEST BROADWAY, SUITE 312
MADISON, WISCONSIN 53713-1839
608.223.9600
FAX: 608.223.9601
www.kjww.com KJWW #110087



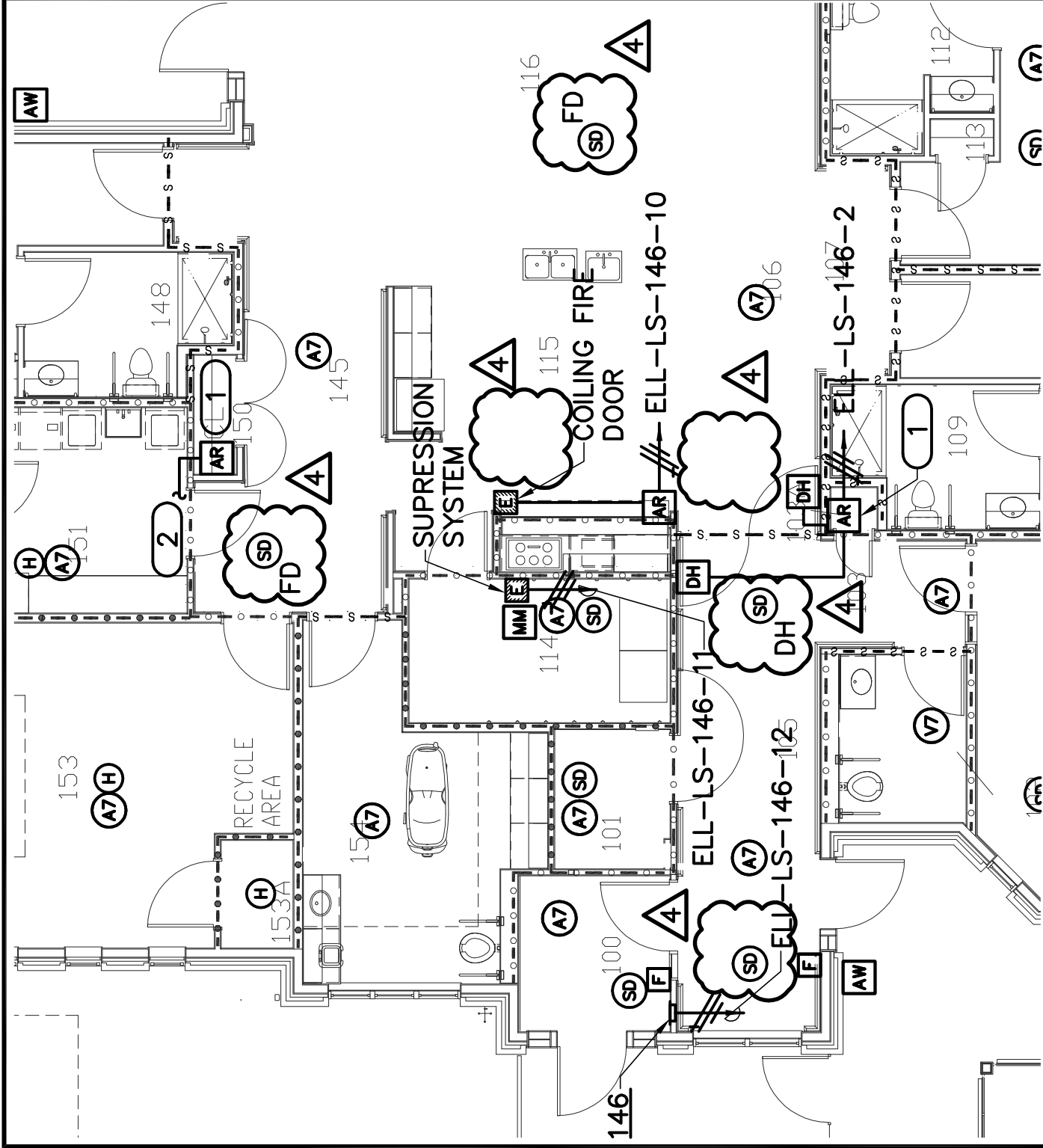
Dept. of Veterans Affairs
Medical Center
5000 W. National Avenue
Milwaukee, WI

Issued For: Amendment No. 4
Reference Drawing No: EP201.1

Scale: NO SCALE
Issue Date: 06 September 2011

Project Name: Construct 4 Unit CLC
Project No.: 695-314

DS-E03



1 FIRST FLOOR PLAN - FIRE ALARM SCALE: 1/8"=1'-0"

ISSUED BY:

K J W
ENGINEERING CONSULTANTS
 Experience you can build on™

802 WEST BROADWAY, SUITE 312
 MADISON, WISCONSIN 53713-1839
 608.223.9600
 FAX: 608.223.9601
 www.kjww.com KJWW #110087.00




Dept. of Veterans Affairs
 Medical Center
 5000 W. National Avenue
 Milwaukee, WI

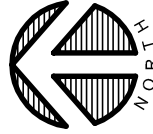
Issued For: Amendment No. 4
 Reference Drawing No: EY201
 Scale: 1/8" = 1'-0"
 Issue Date: 06 September 2011

Project Name: Construct 4 Unit CLC
 Project No.: 695-314

DS-E04

			PRODUCTS, LLC HARTFORD CONCRETE PRODUCTS OR APPROVED EQUAL
57	<u>DB</u>	DOORBELL, CHIME KIT, 120V TRANSFORMER.	BROAN THOMAS & BETTS CARLON
58	<u>HVS-CLC</u>	15KV, 1200A/3P, MVR VACUUM MODULAR UNIT, MAGNUM REPLACEMENT CIRCUIT BREAKER FOR MOUNTING WITHIN EXISTING WESTINGHOUSE DH-150 CIRCUIT BREAKER FRAME. REFER TO ONE-LINE, SPECIFICATIONS, AND ES100 FOR ADDITION INFORMATION.	SQUARE-D TYPE 15WSB1
59	<u>HVS-146</u>	PAD MOUNT MEDIUM VOLTAGE SWITCH, 15 KV, 600 AMP, 3 PHASE. AIR INTERRUPTER LOAD BREAK TYPE, SINGLE SELF-SUPPORTING WEATHERPROOF ENCLOSURE. EXTERNAL HANDLE OPERATED 3 POLE SWITCHES. REFER TO ONE-LINE FOR ADDITION INFORMATION.	S&C ELECTRIC PMH-5 FEDERAL PACIFIC
60	<u>TR-146</u> 	DISTRIBUTION TRANSFORMER, 13.2kV:208Y/120V, 225KVA, LIQUID FILLED, PAD MOUNT WEATHERPROOF ENCLOSURE, DEADFRONT TERMINATIONS.	COOPER POWER SYSTEMS GENERAL ELECTRIC SQUARE D
61	<u>HVP-146</u>	SECTIONALIZING CABINET, 15 KV 3 PHASE 600 AMP LOAD BREAK ELBOW STYLE. PAD MOUNT WEATHERPROOF ENCLOSURE WITH HINGED DIAGONAL CUT REMOVABLE COVER, PADLOCK HASP AND PENTAHEAD BOLT. STAINLESS STEEL HARDWARE. PARKING STANDS FOR ALL ELBOWS. FIBERGLASS GROUND SLEEVE, REFER TO ONE-LINE FOR CONFIGURATION.	COOPER POWER ELECTRICAL EQUIPMENT INC. MAYSTEEL FEDERAL PACIFIC
62	<u>ST2</u>	SWITCH, LOCAL TIMER, USER ADJUSTABLE TIME-OUT, 120/277 VOLT, 800/1200 WATT RATING. NO MINIMUM LOAD REQUIREMENT, BEEPS EVERY 5 SECONDS WHEN TIMER REACHES 1 MINUTE UNTIL TIME OUT. SEE LIGHTING CONTROL DIAGRAM FOR WIRING.	WATT STOPPER TS-400 HUBBELL AUTOMATION TD200
63	<u>SK</u>	SWITCH, KEY LOCK TYPE, SINGLE POLE, SINGLE THROW, 120/277 VOLT 20 AMP MAINTAINED CONTACT, SIDE AND BACK WIRED, PROVIDE KEY TO OWNER.	LEVITON 1221-2KL HUBBELL HBL1221L PASS & SEYMOUR PS20ACT-L
64	<u>CTC-146-1</u>	CONTACTOR, 120V COIL, 4 POLE, 100A CONTACTS, NEMA 1 ENCLOSURE.	SQUARE D SQG3 SERIES GENERAL ELECTRIC SIEMENS CUTLER-HAMMER

4



1

ELECTRICAL MATERIAL LIST

SCALE: 1/8"=1'-0"

ISSUED BY:



**ENGINEERING
CONSULTANTS**
Experience you can build on.™

802 WEST BROADWAY, SUITE 312
MADISON, WISCONSIN 53713-1839
608.223.9600
FAX: 608.223.9601
www.kjww.com KJWW #110087.00



Dept. of Veterans Affairs
Medical Center
5000 W. National Avenue
Milwaukee, WI

Issued For: Amendment No. 4
Reference Drawing No: **E601**
Scale: NONE
Issue Date: 06 September 2011

Project Name: Construct 4 Unit CLC
Project No.: 695-314

DS-E05