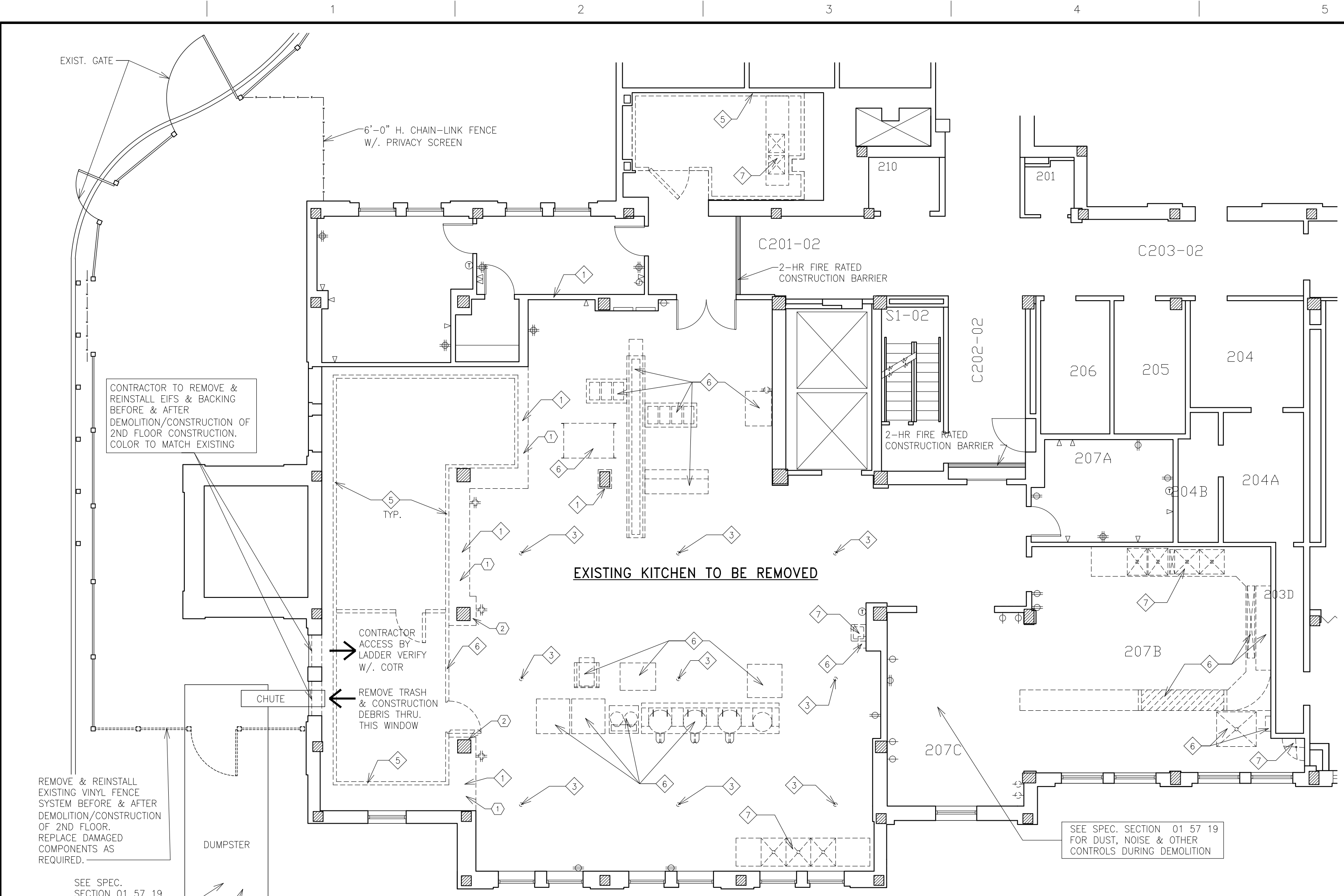
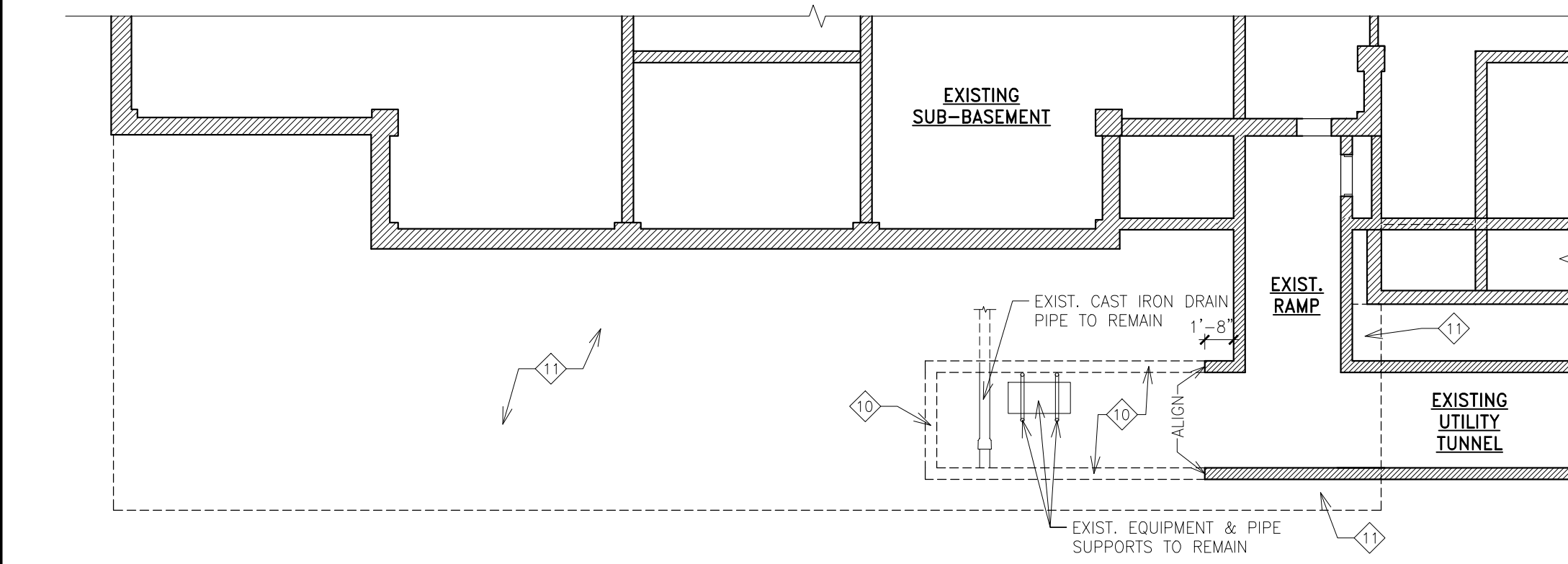


one eighth inch = one foot
one quarter inch = one foot
three eighths inch = one foot
one half inch = one foot
three quarters inch = one foot
one inch = one foot
one and one half inches = one foot
two inches = one foot
three inches = one foot



BLDG. #2 - 2ND FLOOR DEMOLITION PLAN
SCALE: 1/8"=1'-0"

*SEE CONSTRUCTION PHASING PLAN FOR MORE INFORMATION



BLDG. #2 - SUB-BASEMENT DEMOLITION PLAN
SCALE: 1/8"=1'-0"

DEMOLITION PARTITION TYPES:

* CONTRACTOR SHALL FIELD VERIFY ALL PARTITION TYPES IN DEMO. PLAN

- 1 TERRA COTTA BLOCK W/. DRYWALL FURRING
- 2 METAL STUDS W/. DRYWALL TO BOTTOM OF DECK
- 3 8"± REINFORCED CONC. TUNNEL WALL / TOP SLAB

DEMOLITION KEY NOTES:

- 1 REMOVE EXISTING PARTITION WALL & ITS RELATED FINISHES IN ITS ENTIRETY UP TO STRUCTURAL MEMBERS, INCLUDING THE EXISTING RELATED MEP COMPONENTS.
- 2 (NOT USED)
- 3 REMOVE & CAP EXISTING FLOOR DRAIN.
- 4 REMOVE EXISTING DOOR & DOOR FRAME IN ITS ENTIRETY INCLUDING WALL ABOVE DOOR.
- 5 REMOVE EXIST. WALK-IN COOLER/FREEZER & RELATED MEP COMPONENTS IN ITS ENTIRETY.
- 6 CAREFULLY REMOVE EXISTING EQUIPMENT AND RETURN THEM TO VA AT A DESIGNATED AREA AS DIRECTED BY VA.
- 7 REMOVE EXISTING PLUMBING SYSTEM IN ITS ENTIRETY.
- 8 REMOVE EXISTING DUCTS & EQUIPMENT (FAN, MOTOR ETC.). DISCONNECT ALL ELECTRICAL EQUIPMENT PRIOR TO DEMOLITION.
- 9 CAP OFF OPENING IN EXISTING FLOOR WITH 20-GAUGE SHEET METAL COVER.
- 10 SAW CUT AND REMOVE TOP PORTION OF EXISTING CONC. TUNNEL WALL - FROM 5'-0" ABOVE TUNNEL FLOOR AND ABOVE.
- 11 EXCAVATE & REMOVE DIRT FOR NEW BASEMENT. SEE SUB-BASEMENT PLANS FOR INVOLVEMENT

LEGEND:

- REMOVE EXISTING PARTITION/WALL/EQUIPMENT
- REMOVE EXISTING WINDOW
- REMOVE EXISTING DOOR
- ===== EXISTING PARTITION/WALL TO REMAIN
- ===== EXISTING WINDOW TO REMAIN
- ===== EXISTING DOOR TO REMAIN
- ===== EXISTING COLUMN TO REMAIN
- ===== REMOVE EXISTING DUALPLEX ELECT. RECEPTACLE
- ===== REMOVE EXISTING QUADPLEX ELECT. RECEPTACLE
- ===== REMOVE EXISTING DATA OUTLET
- ===== REMOVE COVERED OUTLET (TO VERIFY)
- ===== REMOVE EXISTING A/C POWERED THERMOSTAT

TEMPORARY ENVIRONMENTAL CONTROLS:

- 1. CONTRACTOR INCLUDING SUBCONTRACTORS SHALL PROVIDE TEMPORARY ENVIRONMENTAL CONTROLS AND MEASURES TO PROTECT AIR, WATER, LAND RESOURCES AND INTERIOR ENVIRONMENTS DURING THE CONSTRUCTION OF THE PROJECT.
- 2. AFTER THE CONTRACT IS AWARDED AND PRIOR TO THE COMMENCEMENT OF THE WORK, THE CONTRACTOR SHALL MEET WITH THE CONTRACTING OFFICER'S REPRESENTATIVE (COR) TO DISCUSS THE PROPOSED ENVIRONMENTAL PROTECTION PLAN AND TO DEVELOP MUTUAL UNDERSTANDING RELATIVE TO DETAILS OF ENVIRONMENTAL PROTECTION, NOT MORE THAN 20 DAYS AFTER THE MEETING. CONTRACTOR SHALL PREPARE AND SUBMIT TO THE COR FOR APPROVAL, A WRITTEN AND/OR GRAPHIC ENVIRONMENTAL PROTECTION PLAN INCLUDING, BUT NOT LIMITED TO, THE FOLLOWING:
 - A. MISCELLANEOUS ITEMS AS REQUIRED IN SECTION 01 57 19 - TEMPORARY ENVIRONMENTAL CONTROLS.
 - B. CONSTRUCTION PLAN: DRAWINGS SHOWING LOCATIONS OF ANY PROPOSED TEMPORARY EXCAVATIONS OR EMBANKMENTS FOR HAUL ROADS, MATERIAL STORAGE AREAS, STRUCTURES, SANITARY FACILITIES, AND STOCKPILES OF EXCESS OR SPOIL MATERIALS.
 - C. EROSION CONTROL PLAN APPROVED BY THE DISTRICT OFFICE OF THE U.S. SOIL CONSERVATION SERVICE AND THE DEPARTMENT OF VETERAN AFFAIRS.
 - D. ENVIRONMENTAL MONITORING PLANS FOR THE JOB SITE INCLUDING LAND, WATER, AIR AND NOISE.
 - E. WORK AREA PLAN: IT SHALL SHOW THE PROPOSED ACTIVITY IN EACH PORTION OF THE AREA AND SHALL IDENTIFY THE AREAS OF LIMITED USE OR NONUSE. PLANS SHOULD INCLUDE MEASURES FOR MARKING THE LIMITS OF USE AREAS.
- 3. APPROVAL OF THE CONTRACTOR'S ENVIRONMENTAL PROTECTION PLAN WILL NOT RELIEVE THE CONTRACTOR OF RESPONSIBILITY FOR ADEQUATE AND CONTINUED CONTROL OF POLLUTANTS AND OTHER ENVIRONMENTAL PROTECTION MEASURES.
- 4. PROTECT ENVIRONMENTAL RESOURCES WITHIN THE PROJECT BOUNDARIES AND THOSE AFFECTED OUTSIDE THE LIMITS OF PERMANENT WORK DURING THE ENTIRE PERIOD OF THIS CONTRACT. CONFINE ACTIVITIES TO AREAS DEFINED BY THE SPECIFICATIONS AND DRAWINGS.
- 5. PROTECTION OF LAND RESOURCES: PRIOR TO CONSTRUCTION, IDENTIFY ALL LAND RESOURCES TO BE PRESERVED WITHIN THE WORK AREA. DO NOT REMOVE, CUT, DEFACE, INJURE, OR DESTROY LAND RESOURCES INCLUDING TREES, SHRUBS, VINES, GRASSES, TOP SOIL, AND LAND FORMS WITHOUT PERMISSION FROM THE COR.
 - A. WORK AREA LIMITS: PRIOR TO ANY CONSTRUCTION, MARK THE AREAS THAT REQUIRE WORK TO BE PERFORMED UNDER THIS CONTRACT. MARK OR FENCE ISOLATED AREAS WITHIN THE GENERAL WORK AREA THAT ARE TO BE SAVED AND PROTECTED. CONVEY TO ALL PERSONNEL THE PURPOSE OF MARKING AND PROTECTING ALL NECESSARY OBJECTS.
 - B. PROTECTION OF LANDSCAPE: PROTECT TREES, SHRUBS, VINES, GRASSES, LAND FORMS, AND OTHER LANDSCAPE FEATURES SHOWN ON THE DRAWINGS TO BE PRESERVED BY MARKING, FENCING, OR USING ANY OTHER APPROVED TECHNIQUES.
 - C. REDUCTION OF EXPOSURE OF UNPROTECTED ERODIBLE SOILS: PLAN AND CONDUCT EARTHWORK TO MINIMIZE THE DURATION OF EXPOSURE OF UNPROTECTED SOILS. CLEAR AREAS IN REASONABLY SIZED INCREMENTS ONLY AS NEEDED TO USE FORM EARTHWORK TO FINAL GRADE AS SHOWN. IMMEDIATELY PROTECT SLOPES AND BACK SLOPES UPON COMPLETION OF ROUGH GRADING. SEE SPECIFICATIONS FOR DETAILS.
 - D. TEMPORARY PROTECTION OF DISTURBED AREAS: CONSTRUCT DIVERSION DITCHES, BENCHES, AND BERMS TO RETARD AND DIVERT RUNOFF FROM THE CONSTRUCTION SITE TO PROTECTED DRAINAGE AREAS APPROVED UNDER PARAGRAPH 208 OF THE CLEAN WATER ACT. SEE SPECIFICATIONS FOR DETAILS.
 - E. EROSION AND SEDIMENTATION CONTROL DEVICES: THE EROSION AND SEDIMENT CONTROLS SELECTED AND MAINTAINED BY THE CONTRACTOR SHALL BE SUCH THAT WATER QUALITY STANDARDS ARE NOT VIOLATED AS A RESULT OF THE CONTRACTOR'S ACTIVITIES. CONSTRUCT OR INSTALL ALL TEMPORARY AND PERMANENT EROSION AND SEDIMENTATION CONTROL FEATURES. MAINTAIN TEMPORARY EROSION AND SEDIMENT CONTROL MEASURES SUCH AS BERMS, DIKES, DRAINS, SEDIMENTATION BASINS, GRASSING, AND MULCHING, UNTIL PERMANENT DRAINAGE AND EROSION CONTROL FACILITIES ARE COMPLETED AND OPERATIVE.
 - F. MANAGE BORROW AREAS ON GOVERNMENT PROPERTY TO MINIMIZE EROSION AND TO PREVENT SEDIMENT FROM ENTERING NEARBY WATER COURSES OR LAKES.
 - G. PROTECT ADJACENT AREAS FROM DESPOLIMENT BY TEMPORARY EXCAVATIONS AND EMBANKMENTS.
- 6. PROTECTION OF AIR RESOURCES: KEEP CONSTRUCTION ACTIVITIES UNDER SURVEILLANCE, MANAGEMENT, AND CONTROL TO MINIMIZE POLLUTION OF AIR RESOURCES. BURNING IS NOT PERMITTED ON THE JOB SITE. KEEP ACTIVITIES, EQUIPMENT, PROCESSES, AND WORK OPERATED OR PERFORMED, IN STRICT ACCORDANCE WITH THE STATE OF ILLINOIS AND FEDERAL EMISSION AND PERFORMANCE LAWS AND STANDARDS. MAINTAIN AMBIENT AIR QUALITY STANDARDS SET BY THE ENVIRONMENTAL PROTECTION AGENCY. FOR THOSE CONSTRUCTION OPERATIONS AND ACTIVITIES SPECIFIED:
 - A. PARTICULATES: CONTROL DUST PARTICLES, AEROSOLS, AND GASEOUS BY-PRODUCTS FROM ALL CONSTRUCTION ACTIVITIES, PROCESSING, AND PREPARATION OF MATERIALS (SUCH AS FROM ASPHALTIC BATCH PLANTS) AT ALL TIMES, INCLUDING WEEKENDS, HOLIDAYS, AND HOURS WHEN WORK IS NOT IN PROGRESS.
 - B. PARTICULATES: MAINTAIN ALL EXCAVATIONS, STOCKPILES, HAUL ROADS, PERMANENT AND TEMPORARY ACCESS ROADS, PLANT SITES, SPOIL AREAS, BORROW AREAS, AND ALL OTHER WORK AREAS WITHIN OR OUTSIDE THE PROJECT BOUNDARIES FREE FROM PARTICULATES WHICH WOULD CAUSE A HAZARD OR A NUISANCE. SPRINKLERING, CHEMICAL TREATMENT OF AN APPROVED TYPE, LIGHT BITUMINOUS TREATMENT, BAGHOUSE, SCRUBBERS, ELECTROSTATIC PRECIPITATORS, OR OTHER METHODS ARE PERMITTED TO CONTROL PARTICULATES IN THE WORK AREA.
 - C. HYDROCARBONS AND CARBON MONOXIDE: CONTROL MONOXIDE EMISSIONS FROM EQUIPMENT TO FEDERAL AND STATE ALLOWABLE LIMITS.
 - D. ODORS: CONTROL ODORS OF CONSTRUCTION ACTIVITIES AND PREVENT OBNOXIOUS ODORS FROM OCCURRING.
- 7. REDUCTION OF NOISE: MINIMIZE NOISE USING EVERY ACTION POSSIBLE. PERFORM NOISE-PRODUCING WORK IN LESS SENSITIVE HOURS OF THE DAY OR WEEK AS DIRECTED BY THE COR. MAINTAIN NOISE-PRODUCED WORK AT OR BELOW THE DECIBEL LEVELS AND WITHIN THE TIME PERIODS SPECIFIED. SEE SPECIFICATIONS FOR DETAILS.
- 8. RESTORATION OF DAMAGED PROPERTY: IF ANY DIRECT OR INDIRECT DAMAGE IS DONE TO PUBLIC OR PRIVATE PROPERTY RESULTING FROM ANY ACT, OMISSION, NEGLIGENCE, OR MISCONDUCT, THE CONTRACTOR SHALL RESTORE THE DAMAGED PROPERTY TO A CONDITION EQUAL TO THAT EXISTING BEFORE THE DAMAGE AT NO ADDITIONAL COST TO THE GOVERNMENT. REPAIR, REBUILD, OR RESTORE PROPERTY AS DIRECTED OR MAKE GOOD SUCH DAMAGE IN AN ACCEPTABLE MANNER.
- 9. FINAL CLEAN-UP: ON COMPLETION OF PROJECT AND AFTER REMOVAL OF ALL DEBRIS, RUBBISH, AND TEMPORARY CONSTRUCTION, CONTRACTOR SHALL LEAVE THE CONSTRUCTION AREA IN A CLEAN CONDITION SATISFACTORY TO THE COR. CLEANING SHALL INCLUDE OFF THE STATION DISPOSAL OF ALL ITEMS AND MATERIALS NOT REQUIRED TO BE SALVAGED, AS WELL AS ALL DEBRIS AND RUBBISH RESULTING FROM DEMOLITION AND NEW WORK OPERATIONS.
- 10. CONTRACTOR SHALL CAREFULLY REMOVE EXISTING BUILT-IN KITCHEN/OFFICE EQUIPMENT WITHOUT DAMAGE AND RETURN THEM TO VA AT A DESIGNATED AREA AS DIRECTED BY VA.
- 11. REMOVE EXISTING PLUMBING STACKS OR PLUMBING ELEMENTS ON EXISTING KITCHEN AREA INCLUDING THOSE DIRECTLY RELATED TO LOWER FLOOR (1st FLOOR). REINSTALL & RECONNECT NEW PLUMBING RELATED TO ALL EXISTING FIXTURES ON 1st FLOOR.
- 12. CONTRACTOR SHALL EXTEND ALL FIRE PARTITIONS FROM FLOOR TO THE UNDERSIDE OF EXISTING OR NEW CONCRETE SLAB/METAL DECK. SEAL GAPS AT ALL DUCT/PIPE PENETRATIONS THROUGH FIRE PARTITION WALLS.
- 13. CONTRACTOR SHALL PROVIDE A 3/4" MIN. THICK PLYWOOD OR HEAVY LUMBER SUCH AS 2x12'S ON GROUND FOR DUMPSTER OR LIFTING EQUIPMENT (BOOMER, SWINGSTAGE, SCAFFOLDING OR LADDER ETC.) TO MANUEVER AROUND WORKING AREAS IN ORDER TO PROTECT EXISTING LAWN AND PAVEMENT.
- 14. CONTRACTOR SHALL PATCH ALL THE AREAS THAT HAVE BEEN DISTURBED OR DAMAGED DURING DEMOLITION. THE PATCHING MATERIAL SHALL MATCH EXISTING CONDITION.
- 15. SEE CONSTRUCTION PHASING PLANS FOR PORTABLE CONSTRUCTION FENCE INFORMATION.
- 16. 2ND FLOOR CONSTRUCTION ACCESS AS SHOWN WILL BE BY LADDER FROM THE OUTSIDE ONLY, NOT THROUGH BUILDING INTERIORS.
- 17. COORDINATE WITH ABATEMENT CONTRACTOR FOR LEAD, ASBESTOS & MOLD REMOVAL.
- H. HANDLE AND DISPOSE OF SOLID WASTES IN SUCH A MANNER THAT WILL PREVENT CONTAMINATION OF THE ENVIRONMENT. PLACE SOLID WASTES (EXCLUDING CLEARING DEBRIS) IN CONTAINERS THAT ARE EMPTIED ON A REGULAR SCHEDULE. TRANSPORT ALL SOLID WASTE OFF GOVERNMENT PROPERTY AND DISPOSE OF WASTE IN COMPLIANCE WITH FEDERAL, STATE, AND LOCAL REQUIREMENTS.
- I. STORE CHEMICAL WASTE AWAY FROM THE WORK AREAS IN CORROSION RESISTANT CONTAINERS AND DISPOSE OF WASTE IN ACCORDANCE WITH FEDERAL, STATE, AND LOCAL REGULATIONS.
- J. HANDLE DISCARDED MATERIALS OTHER THAN THOSE INCLUDED IN THE SOLID WASTE CATEGORY AS DETECTED BY THE COR.

CONSULTANTS:		ARCHITECT/ENGINEERS:	
<div>MAK ARCHITECTS, INC. ARCHITECTURE • PLANNING • INTERIOR DESIGN 8328-R Olive Boulevard., St. Louis, Missouri 63132 mak@makarchitects.com www.makarchitects.com 314-997-3802 314-993-3761 (Fax)</div>		<div>MAK ARCHITECTS, INC. ARCHITECTURE • PLANNING • INTERIOR DESIGN 8328-R Olive Boulevard., St. Louis, Missouri 63132 mak@makarchitects.com www.makarchitects.com 314-997-3802 314-993-3761 (Fax)</div>	
Revisions:		Project Title: BLDG. #2 - SECOND FLOOR & SUB-BASEMENT - DEMOLITION PLANS	
Date:		Approved Project Director:	
		Project Title: CONSTRUCT NEW DIETETICS DEPARTMENT OF VETERAN AFFAIRS MEDICAL CENTER	
		Location: 2401 WEST MAIN STREET, MARION, IL 62959	
		Date: 1-29-2016	
		Checked: L. M.	
		Drawn: C. K.	
		Project Number: 657A5-10-101	
		Building Number: Building #2	
		Drawing Number: A9	
		Dwg. 10 of 32	
		Office of Construction and Facilities Management	
		Department of Veterans Affairs	

CONTRACT DOCUMENTS