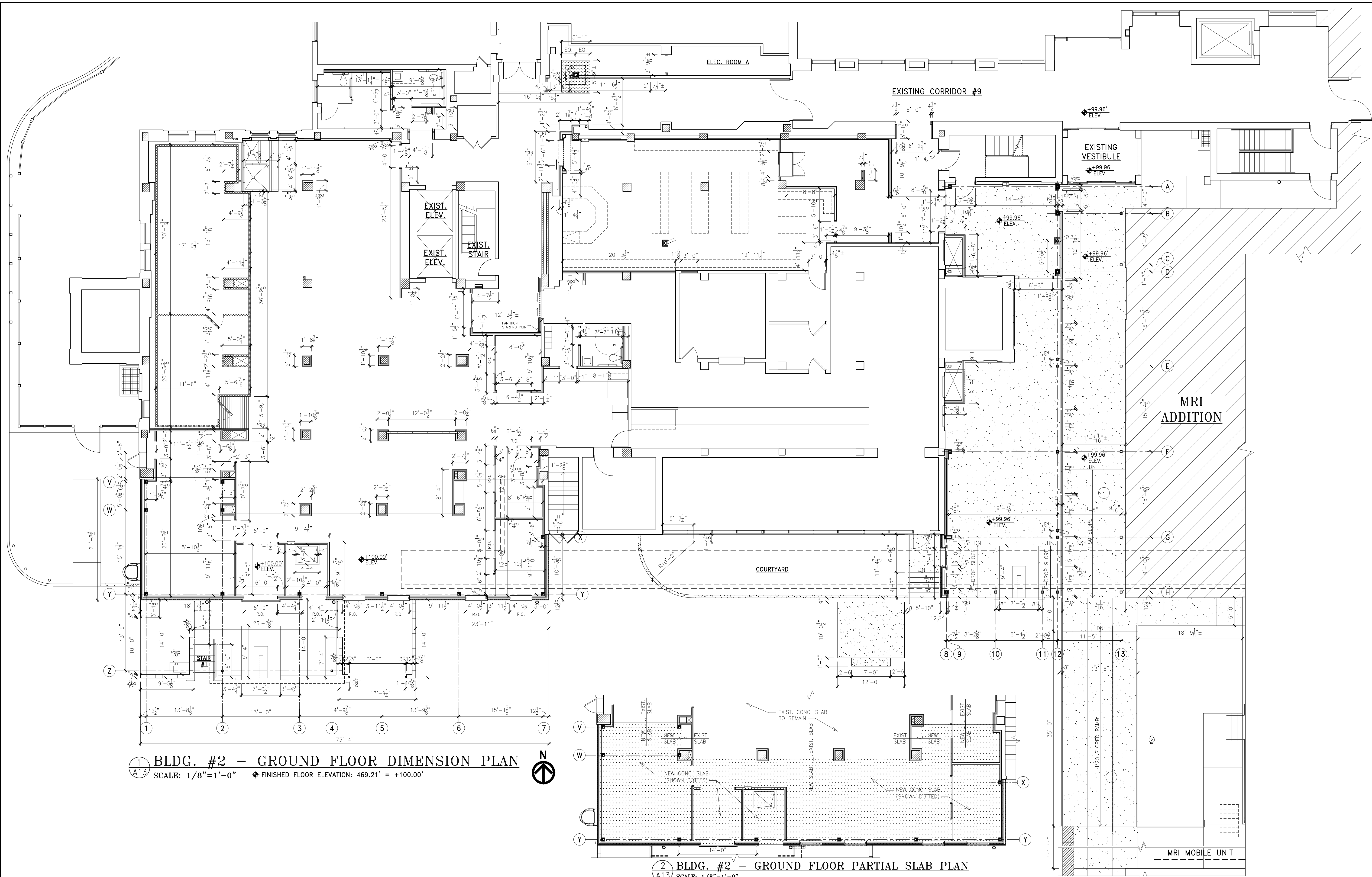


one eighth inch = one foot
one quarter inch = one foot
three eighths inch = one foot
one half inch = one foot
three quarters inch = one foot
one inch = one foot
one and one half inches = one foot
two inches = one foot
three inches = one foot



1 BLDG. #2 - GROUND FLOOR DIMENSION PLAN
SCALE: 1/8"=1'-0" ♦ FINISHED FLOOR ELEVATION: 469.21' = +100.00'

2 BLDG. #2 - GROUND FLOOR PARTIAL SLAB PLAN
SCALE: 1/8"=1'-0"

CONSULTANTS:			ARCHITECT/ENGINEERS: MAK ARCHITECTS, INC. ARCHITECTURE • PLANNING • INTERIOR DESIGN 8328-R Olive Boulevard., St. Louis, Missouri 63132 mak@makarchitects.com www.makarchitects.com 314-997-3802 314-993-3761 (Fax)		Drawing Title BLDG. #2 - GROUND FLOOR DIMENSION PLAN Approved Project Director	Project Title CONSTRUCT NEW DIETETICS DEPARTMENT OF VETERAN AFFAIRS MEDICAL CENTER Location 2401 WEST MAIN STREET, MARION, IL 62959 Date 1-29-2016 Checked L. M. Drawn C. K.	Project Number 657A5-10-101 Building Number Building #2 Drawing Number A13 Dwg. 14 of 32	Office of Construction and Facilities Management
Revisions:								

CONTRACT DOCUMENTS