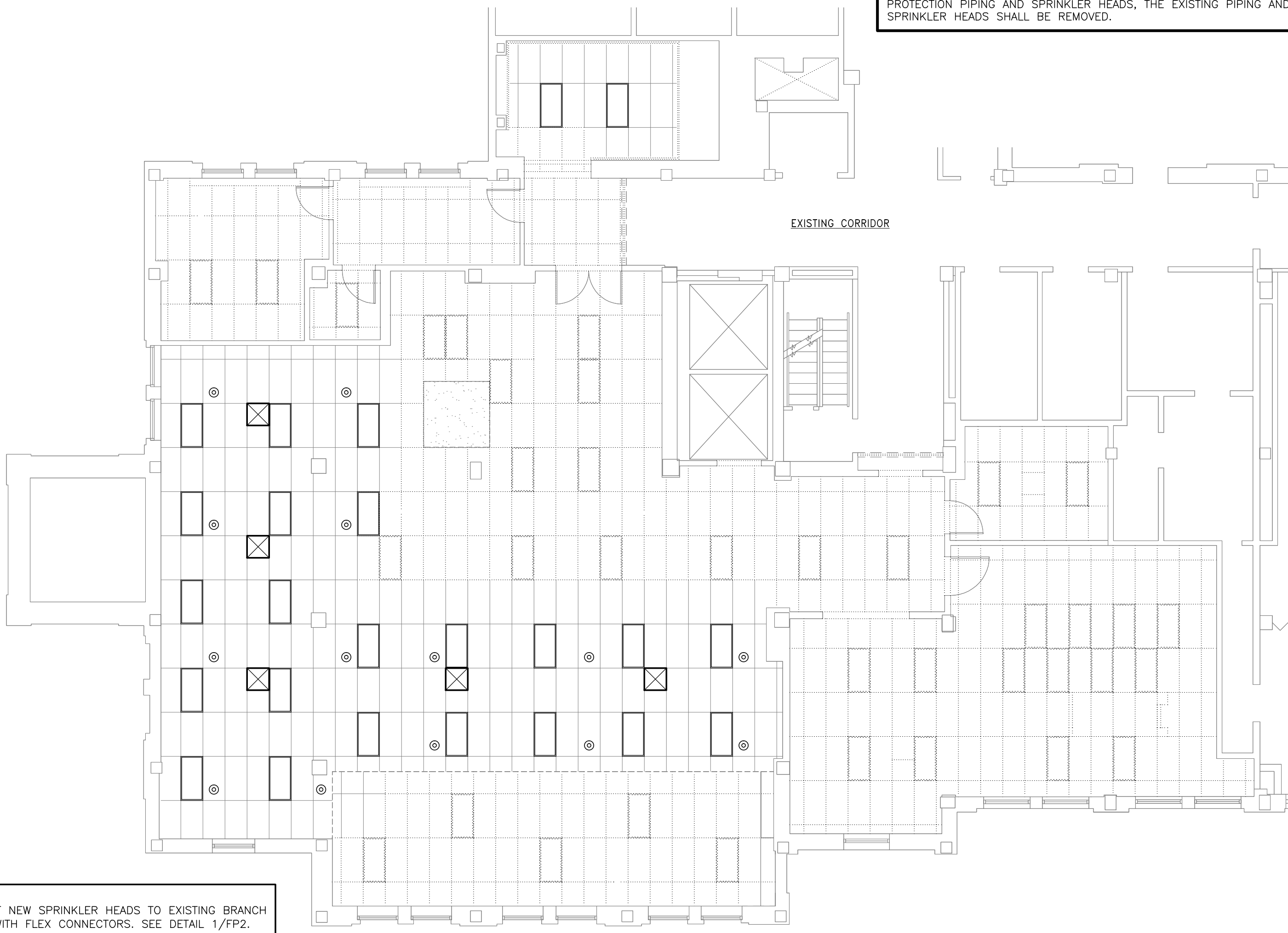
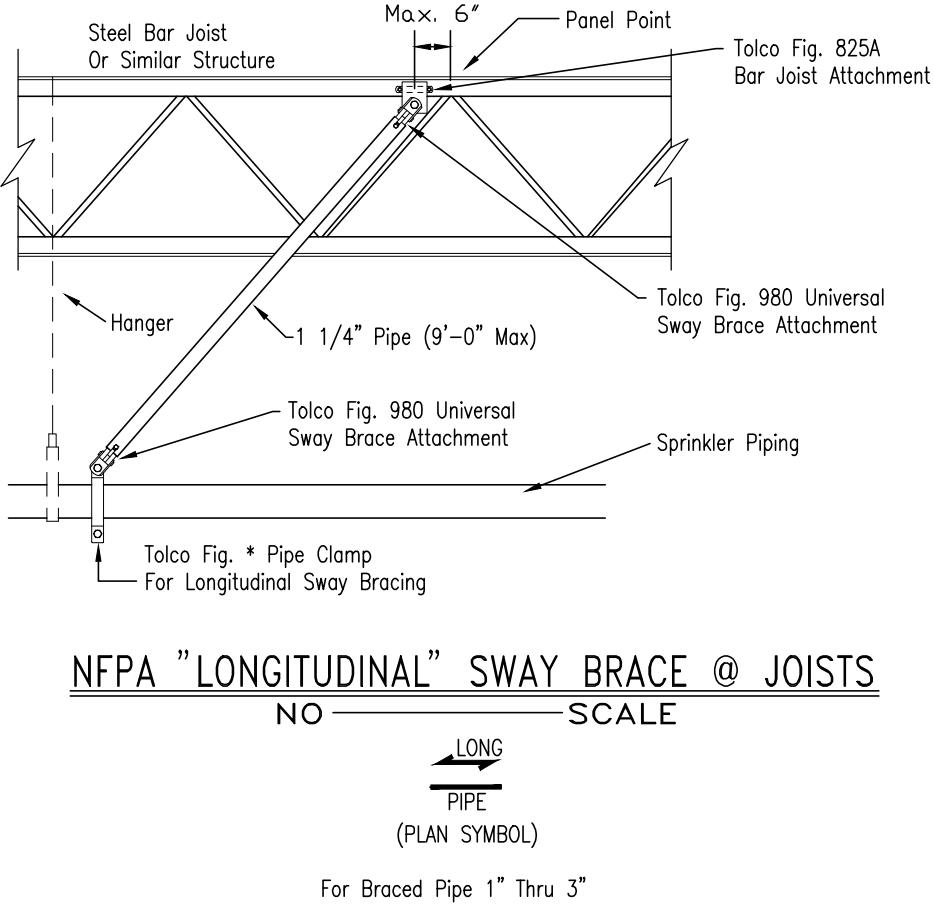
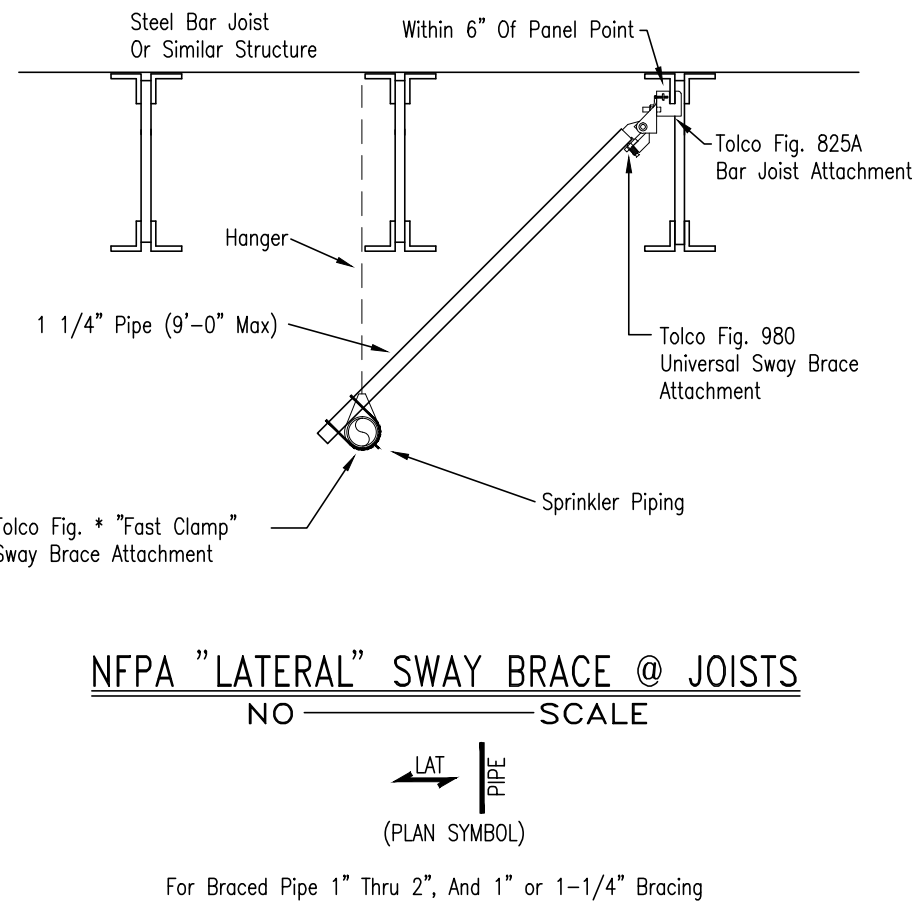
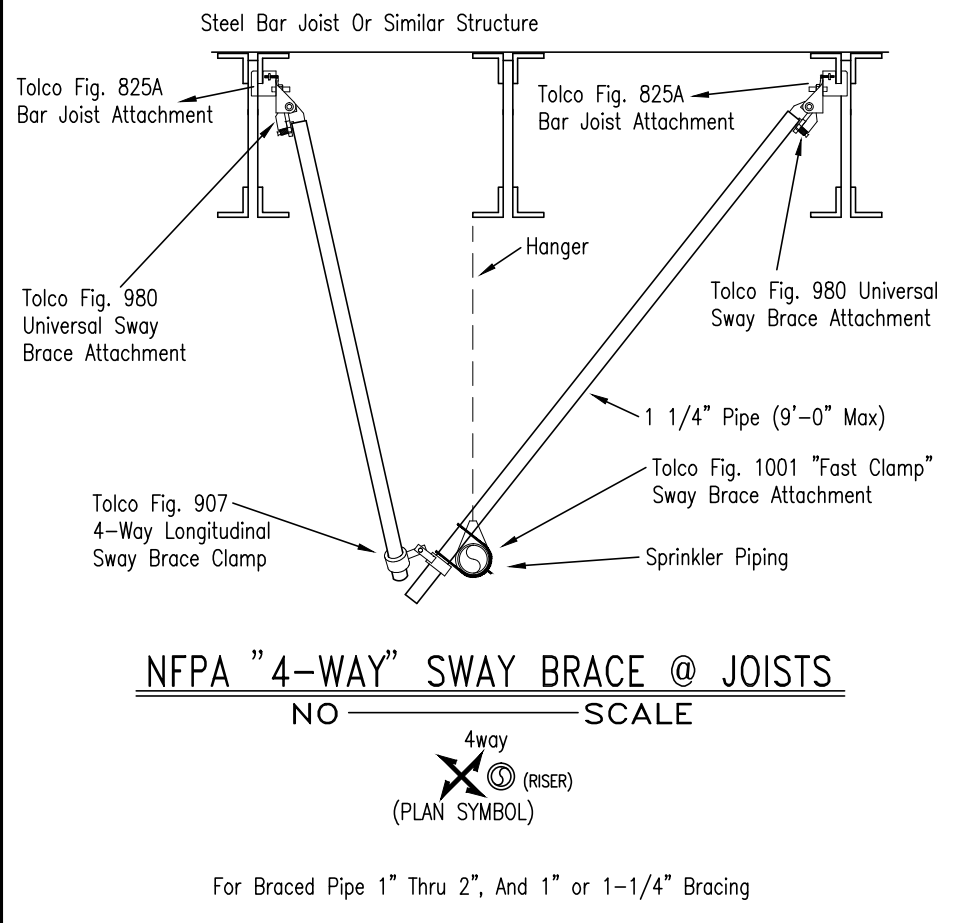
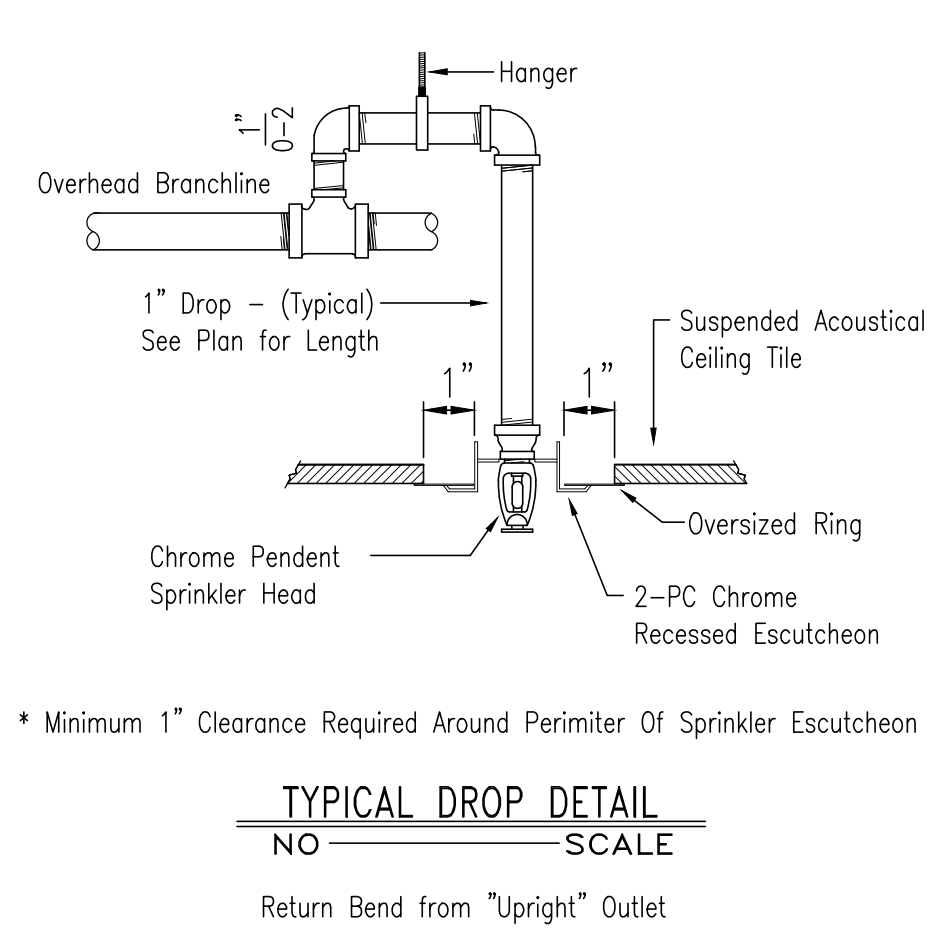
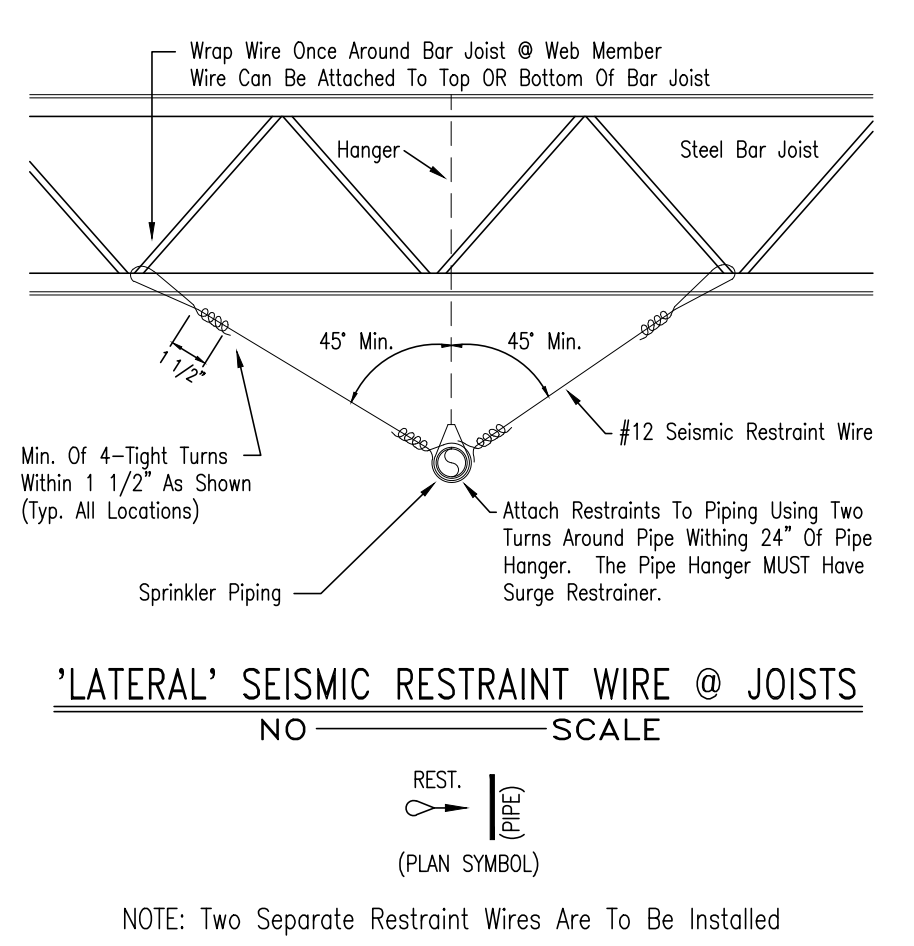


FIRE PROTECTION DEMOLITION NOTE

FOLLOWING THE DEMOLITION OF EXHAUST HOOD AND CEILING, THE SPRINKLER HEAD DROPS (IF THERE IS ANY) SHALL BE ROTATED TO THE UPRIGHT POSITION AND THE PROPER UPRIGHT SPRINKLER HEADS INSTALLED TO MAINTAIN THE FIRE PROTECTION SYSTEM DURING CONSTRUCTION. FOLLOWING THE INSTALLATION OF NEW FIRE PROTECTION PIPING AND SPRINKLER HEADS, THE EXISTING PIPING AND SPRINKLER HEADS SHALL BE REMOVED.

TYPICAL SEISMIC BRACING - USE AS APPLICABLE

- SEISMIC BRACING NOTES:**
- THE SYSTEM IS TO BE DESIGNED AND INSTALLED IN ACCORDANCE WITH NFPA 13 STANDARDS AND ALL LOCAL CODES.
 - FLEXIBLE COUPLINGS WILL BE USED AT PENETRATIONS THRU ALL RIGID WALLS. THUS, THE CLEARANCE METHOD OF NFPA 13 IS NOT REQUIRED. PENETRATIONS THRU FIRE WALLS WILL REQUIRE THE USE OF THE CLEARANCE METHOD.
 - VERTICAL SURGE RESTRAINERS WILL BE INSTALLED AT THE END OF EACH BRANCHLINE AND ARMOVERS EXCEEDING 24" IN LENGTH.
 - FLEXIBLE COUPLINGS WILL BE INSTALLED WITHIN 24" OF ALL BUILDING EXPANSION JOINTS.
 - SEISMIC SEPARATION ASSEMBLIES WILL BE INSTALLED WHERE SPRINKLER PIPING CROSSES BUILDING SEISMIC SEPARATION JOINTS.
 - SPACING AND CONFIGURATION OF SEISMIC BRACING IS TO BE DESIGNED USING THE "ZONE OF INFLUENCE METHOD".



SECOND FLOOR FIRE PROTECTION PLAN

SCALE: 1/8"=1'-0"

Revisions: 1 2 3 4 5 6 7 8 9 10	CONSULTANTS: SGE SMITH-GOTH ENGINEERS, INC. EXPERIENCE. FORWARD-THINKING. 3855 S. JEFFERSON AVE. SPRINGFIELD, MO 65807 P: 417-882-2200 F: 417-882-1188 WWW.SMITHGOTH.COM ILLINOIS CERTIFICATE OF AUTHORITY NO. 184.006101	ARCHITECT/ENGINEERS: MAK ARCHITECTS, INC. ARCHITECTURE • PLANNING • INTERIOR DESIGN 8328-R Olive Boulevard., St. Louis, Missouri 63132 mak@makarchitects.com www.makarchitects.com 314-997-3802 314-993-3761 (Fax)	Drawing Title BLDG. #2 - SECOND FLOOR FIRE PROTECTION PLANS AND DETAILS Approved Project Director	Project Title CONSTRUCT NEW DIETETICS DEPARTMENT OF VETERAN AFFAIRS MEDICAL CENTER Location 2401 WEST MAIN STREET, MARION, IL 62959 Date 12-29-2015 Checked D.L.S. Drawn J.J.W.	Project Number 657A5-10-101 Building Number Building #2 Drawing Number FP2 Dwg 8 of 21	Office of Construction and Facilities Management Department of Veterans Affairs
--	--	---	--	--	--	---

CONTRACT DOCUMENTS