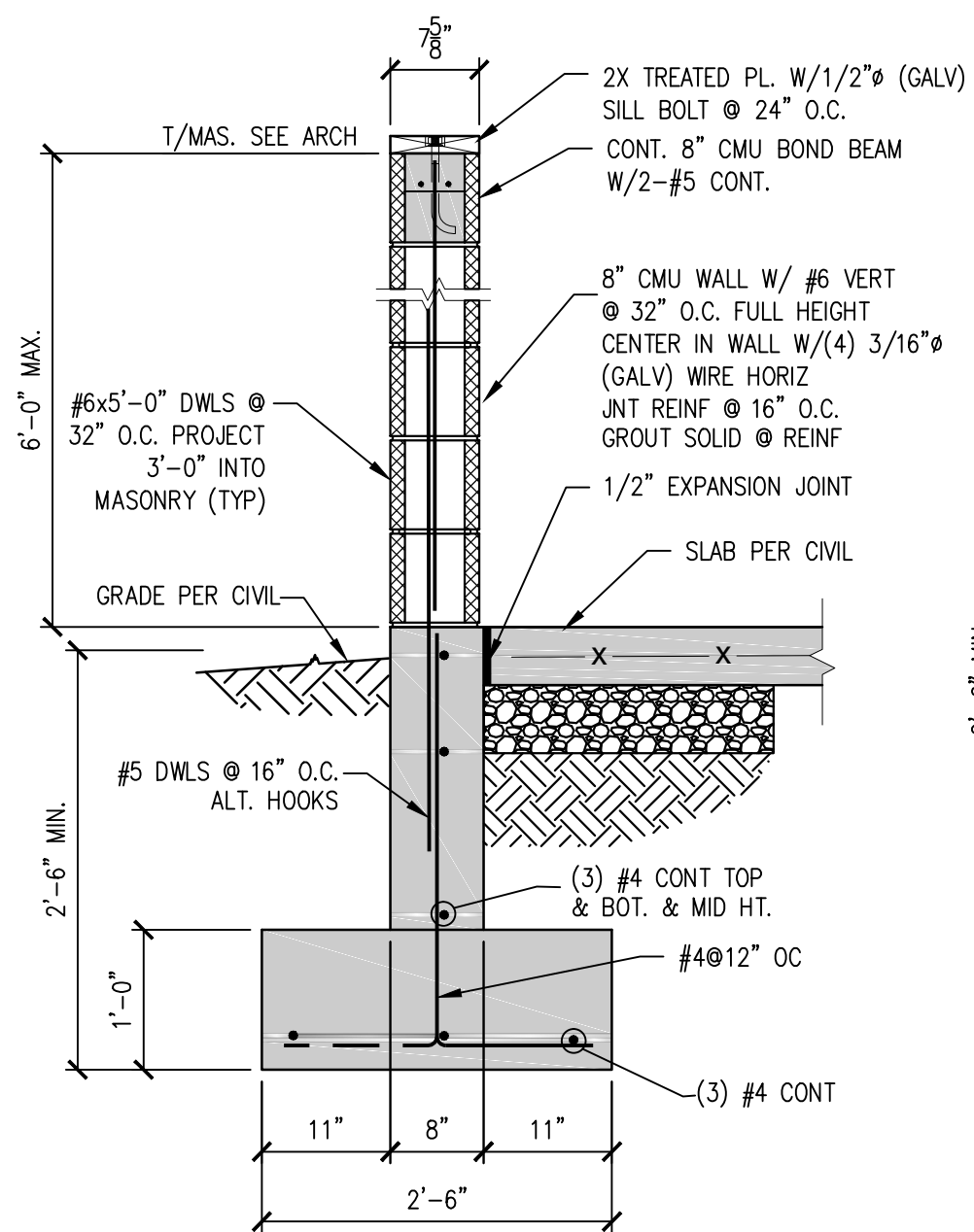
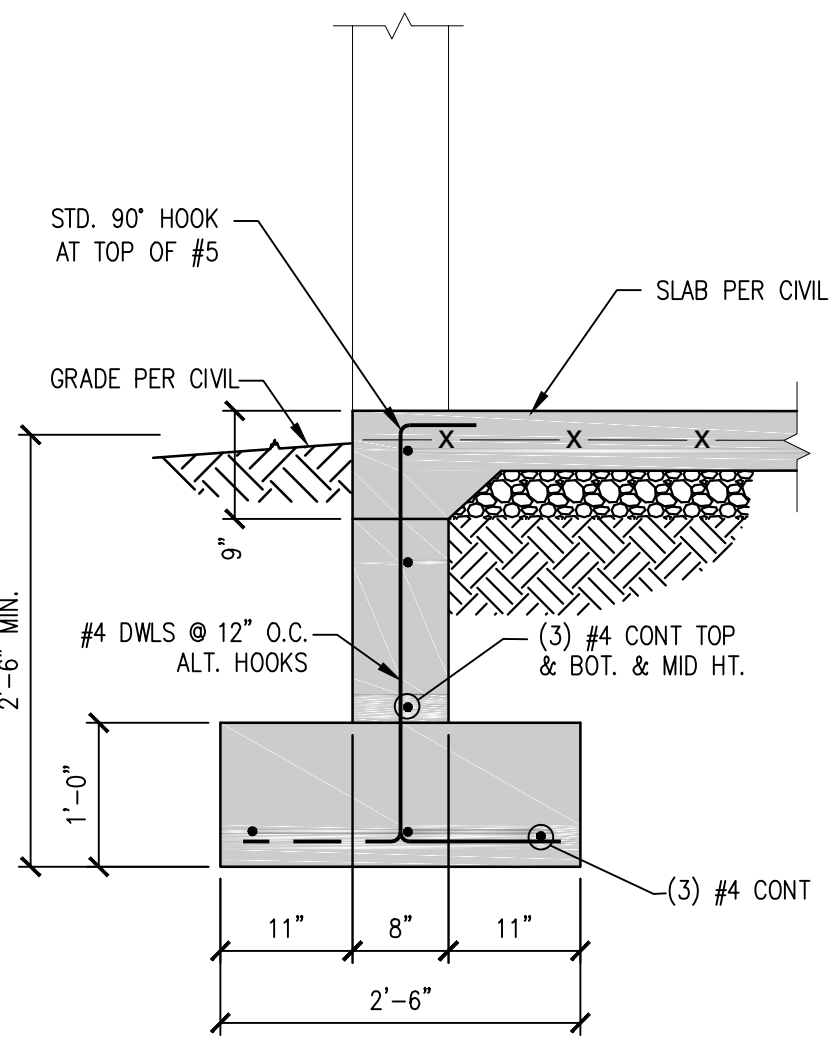


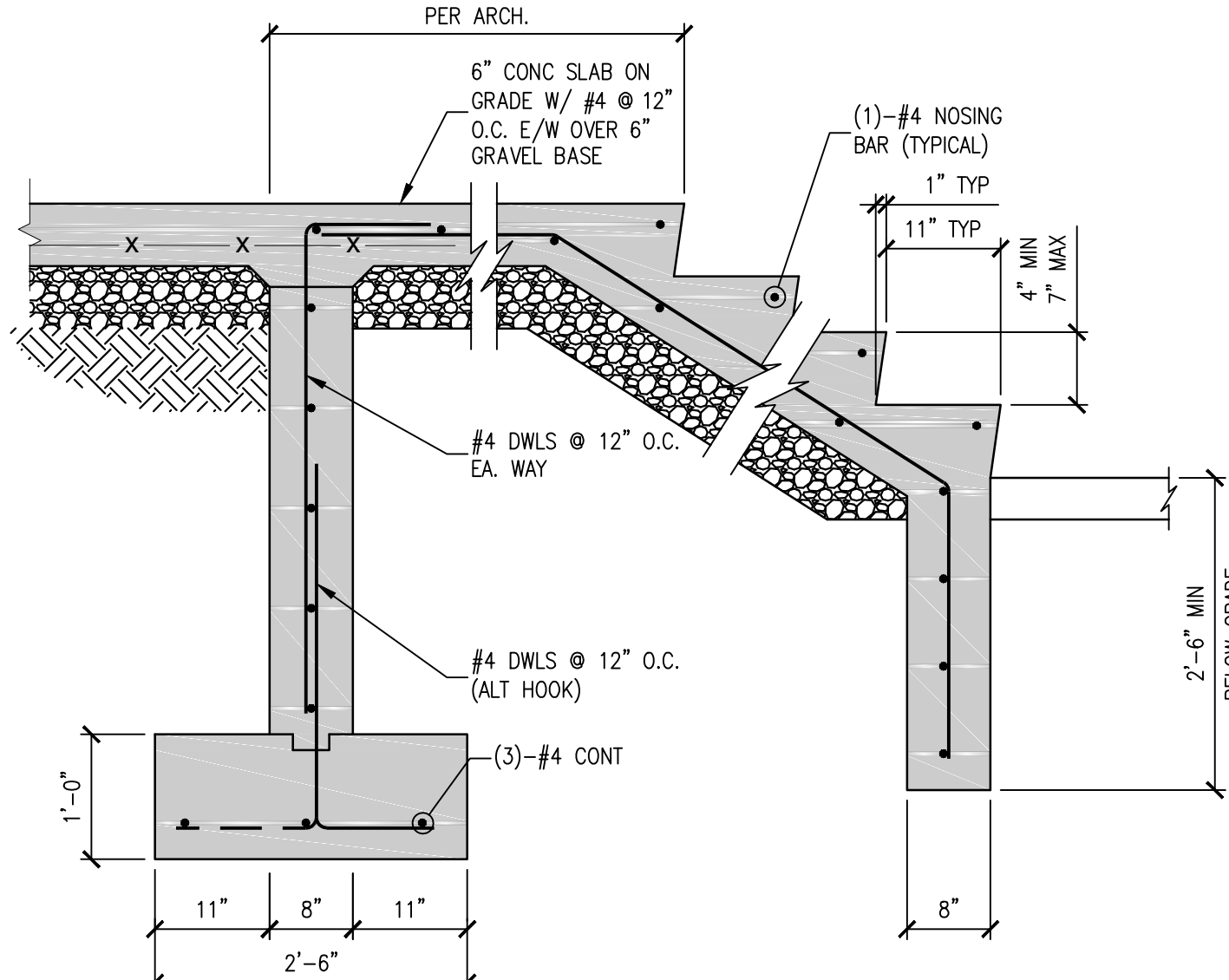
three inches = one foot
one and one half inches = one foot
one inch = one foot
three quarters inch = one foot
one half inch = one foot
three eighths inch = one foot
one quarter inch = one foot
one eighth inch = one foot
one sixteenth inch = one foot



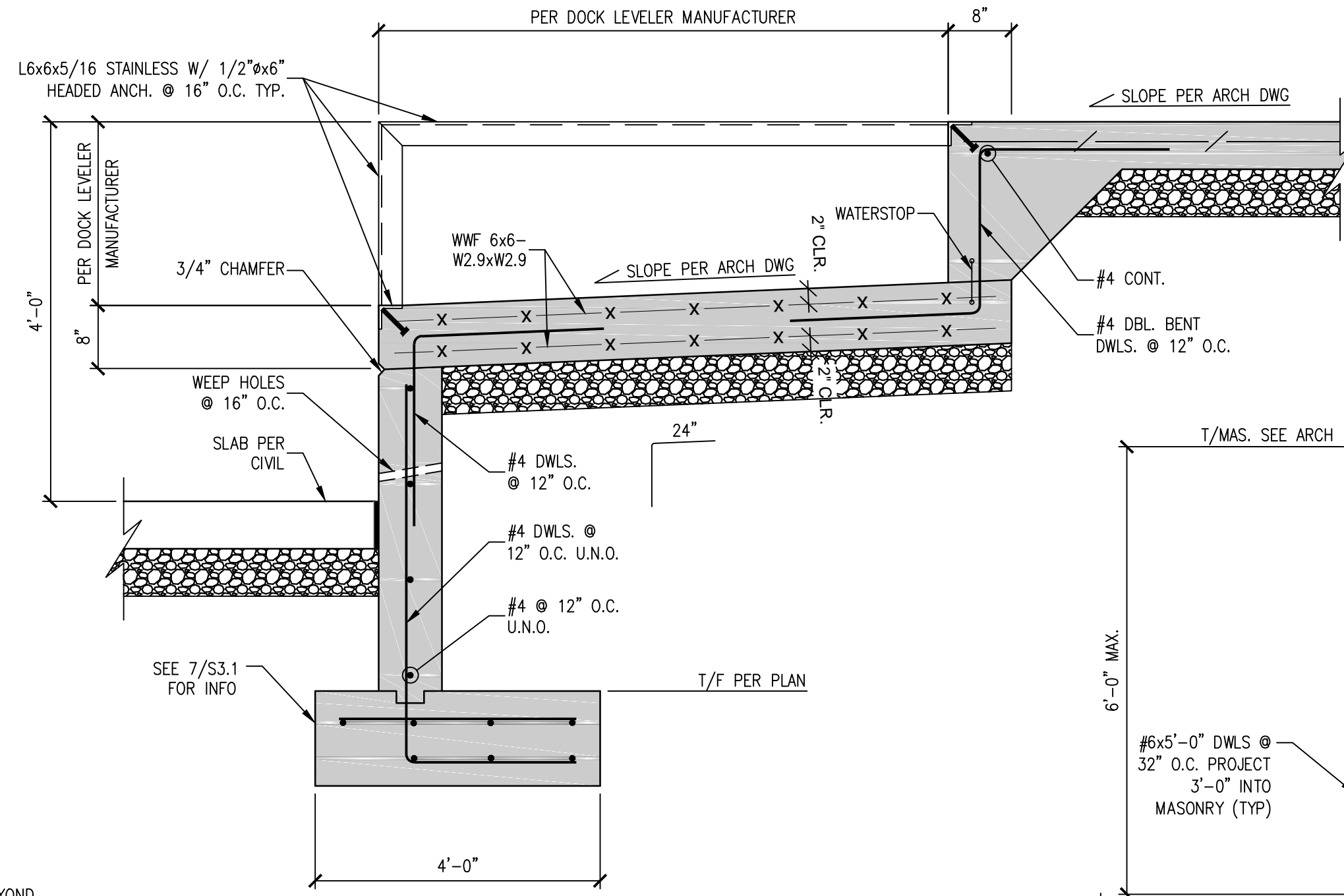
SECTION 1
3/4"=1'-0"



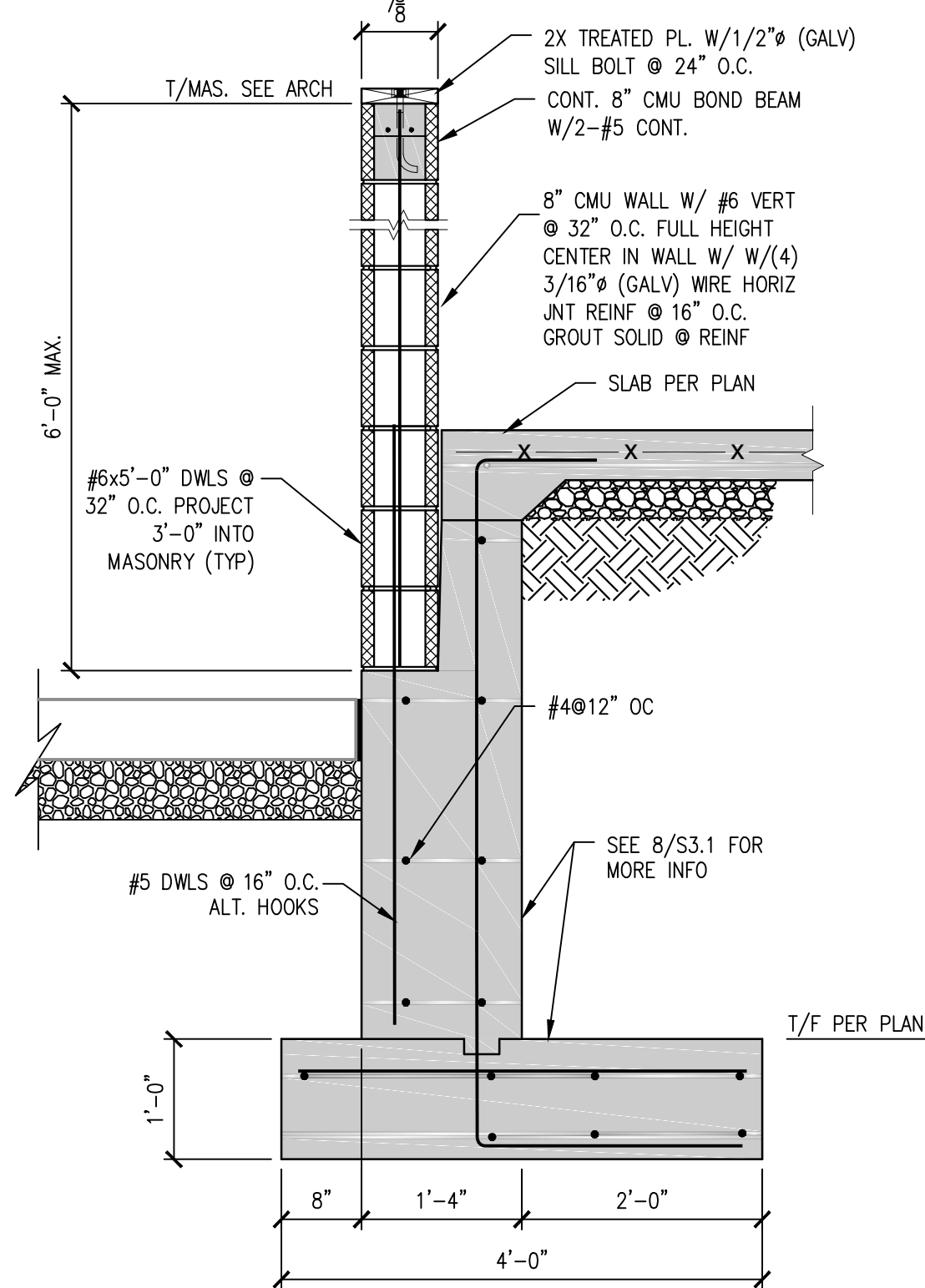
SECTION 2
3/4"=1'-0"



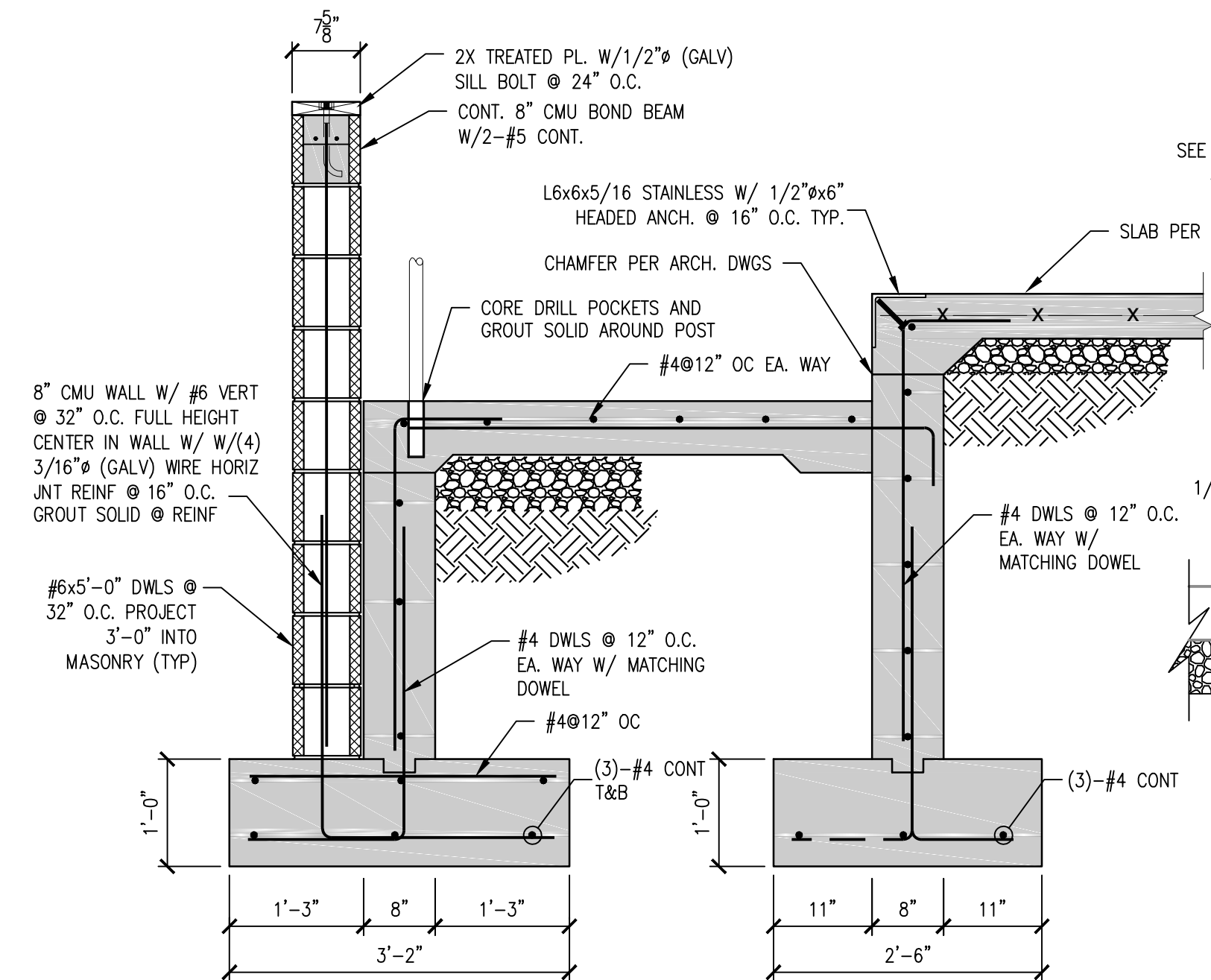
SECTION 3
3/4"=1'-0"



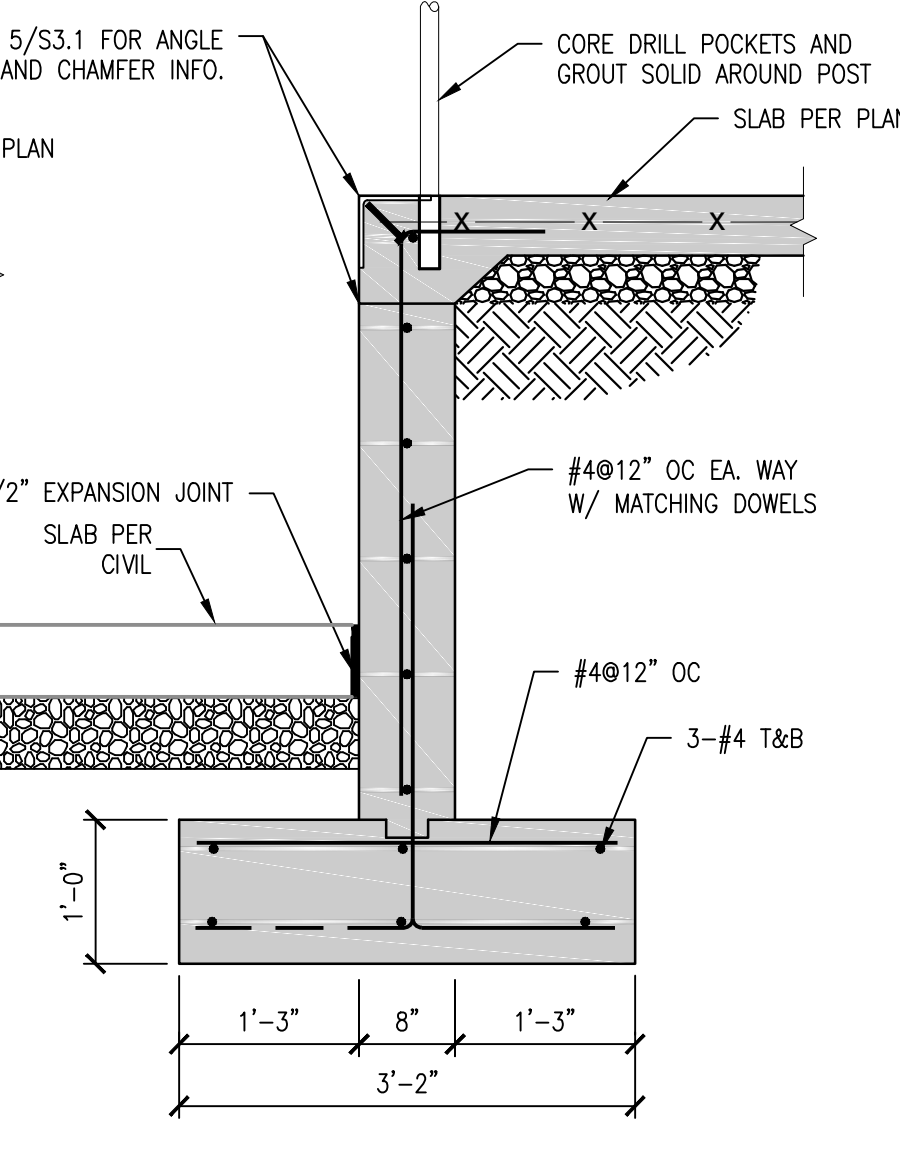
SECTION 4
3/4"=1'-0"



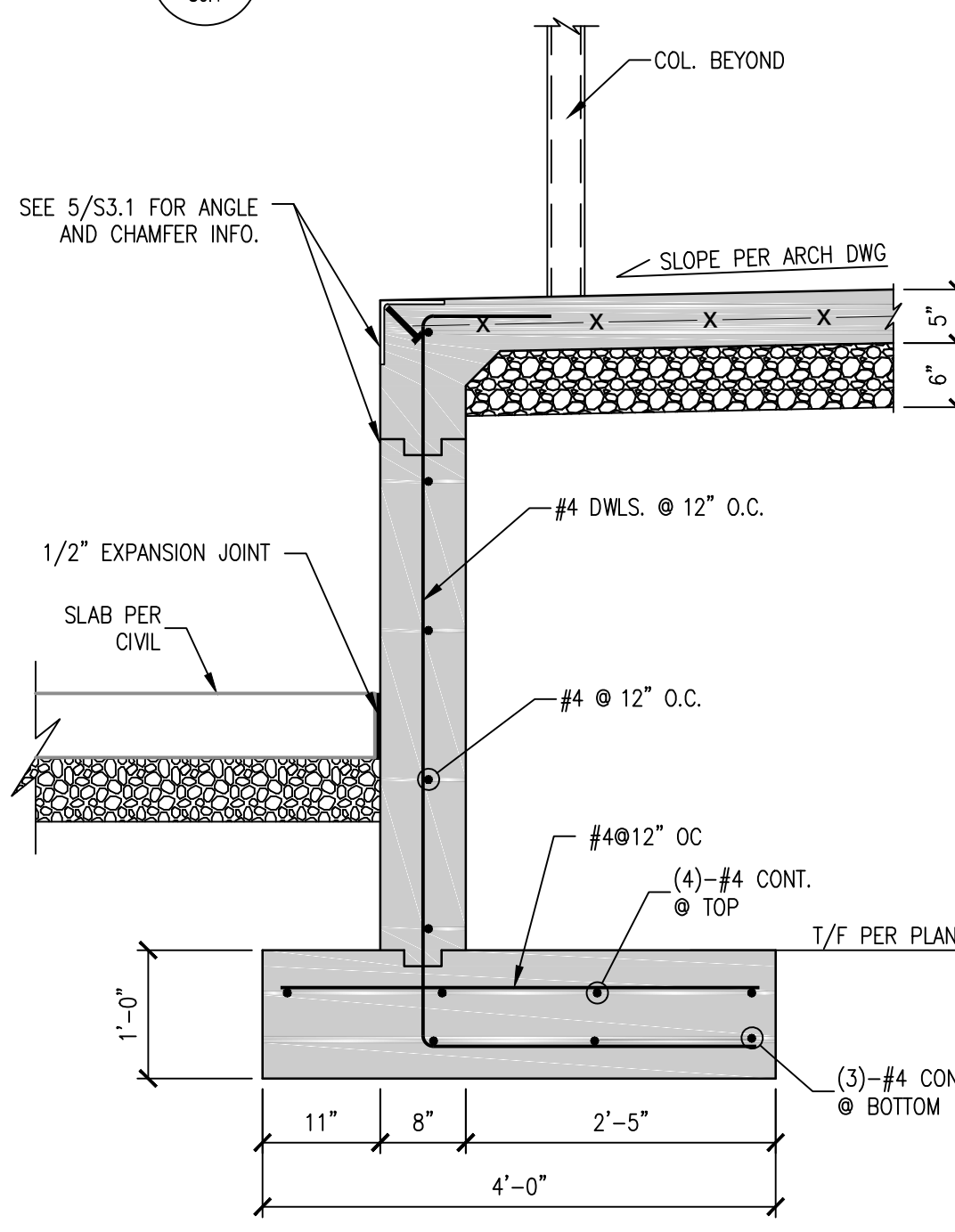
SECTION 9
3/4"=1'-0"



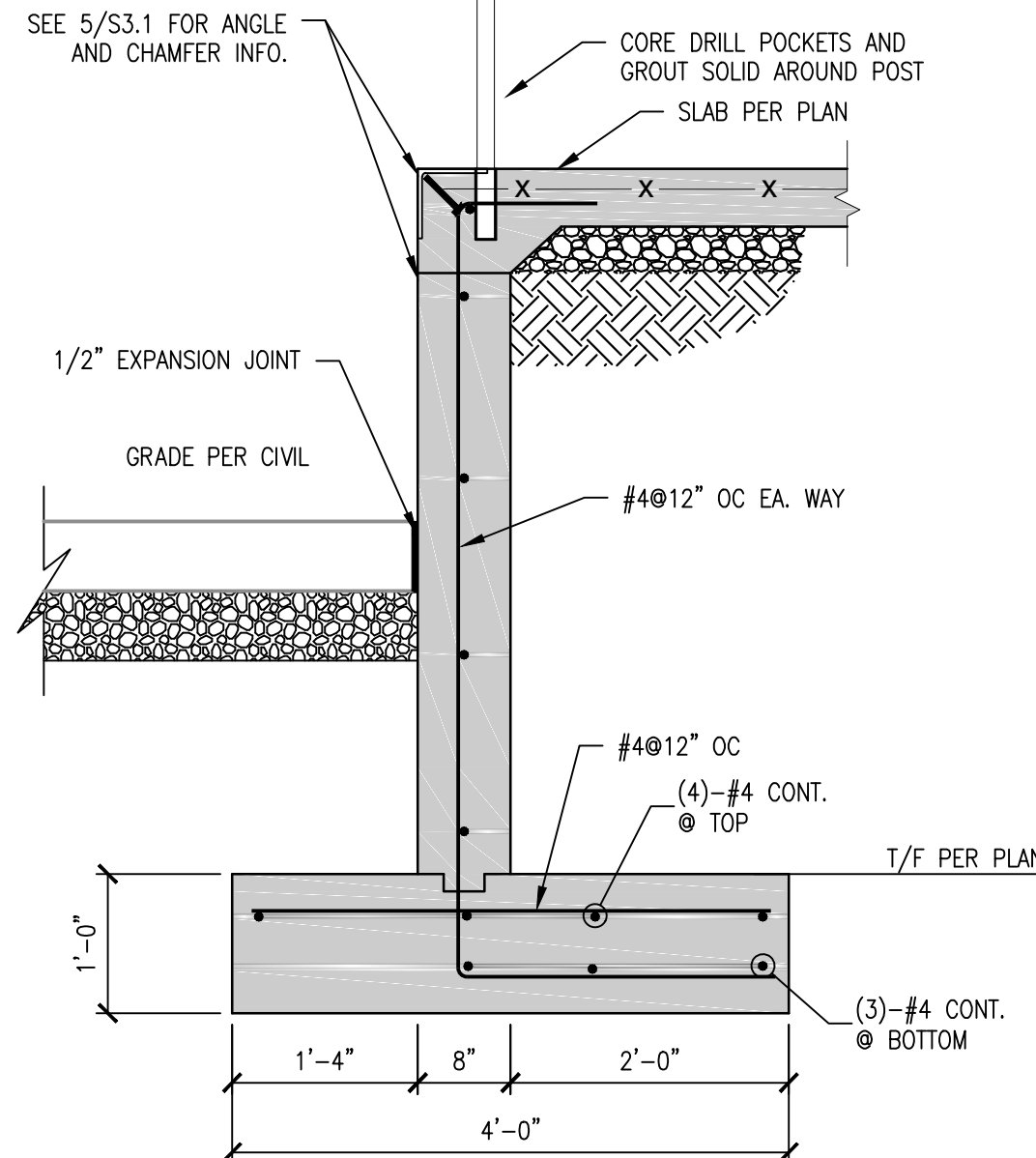
SECTION 5
3/4"=1'-0"



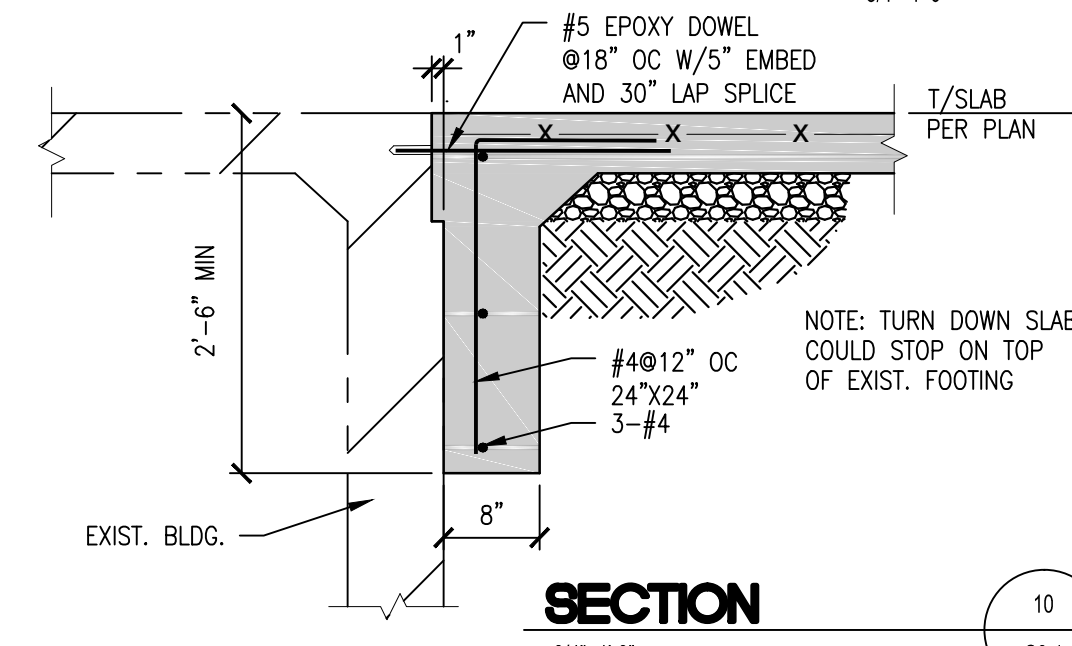
SECTION 6
3/4"=1'-0"



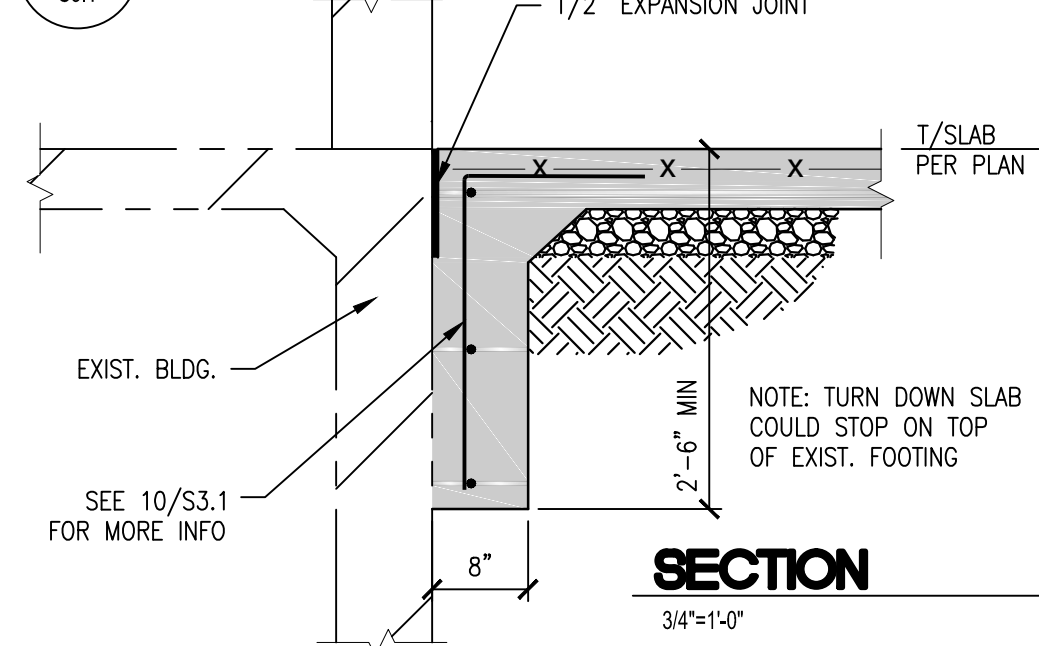
SECTION 7
3/4"=1'-0"



SECTION 8
3/4"=1'-0"



SECTION 10
3/4"=1'-0"



SECTION 11
3/4"=1'-0"

NOTE:
THE STRUCTURAL DRAWINGS ARE NOT A SET OF STAND-ALONE CONSTRUCTION DOCUMENTS. THESE STRUCTURAL DRAWINGS MUST ONLY BE USED IN CONJUNCTION WITH ARCHITECTURAL AND OTHER RELATED DISCIPLINES DRAWINGS. CONTRACTOR TO VERIFY EXISTING CONDITIONS AND CO-ORDINATE BETWEEN THE STRUCTURAL, ARCHITECTURAL, AND OTHER DISCIPLINES DRAWINGS. ANY DISCREPANCY BETWEEN THE DRAWINGS MUST BE BROUGHT TO THE ARCHITECT AND ENGINEERS ATTENTION FOR RESOLUTION PRIOR TO FABRICATION OR CONSTRUCTING THAT PORTION OF THE STRUCTURE.

NOTE:
THE STRUCTURAL ENGINEER OF RECORD IS NOT RESPONSIBLE FOR MEANS AND METHODS OF CONSTRUCTION INCLUDING TECHNIQUES OF FABRICATION AND SAFETY AT THE CONSTRUCTION SITE. THE CONTRACTOR IS RESPONSIBLE FOR DESIGN AND INSTALLATION OF ALL TEMPORARY SHORING, BRACING, BOLTING, WELDING, LUGS, SEAT ANGLES, ETC. TO SAFELY CONSTRUCT THE PROJECT. THE CONTRACTOR IS TO COORDINATE BETWEEN ARCHITECTURAL, STRUCTURAL, AND OTHER DISCIPLINES' DRAWINGS AND TO BRING ANY DISCREPANCY TO THE ATTENTION OF THE ARCHITECT AND ENGINEER PRIOR TO GOING AHEAD WITH CONSTRUCTION OF THAT SECTION.

NOTE:
CONTRACTORS TO COMPLY WITH ALL GOVERNING REGULATIONS AND REQUIREMENTS INCLUDING OSHA REGULATIONS 29 CFR PART 1926 FOR CONSTRUCTION INDUSTRY.

Revisions	Date

CONSULTANTS:
Z. CHAI, SE
STRUCTURAL ENGINEER (SE 081-005787)

16135 Wilson Manor Dr, Chesterfield, MO 63005
garychai@gcengineer.com www.gcengineer.com
314-303-6825



ARCHITECT/ENGINEERS:
MAK ARCHITECTS, INC.
ARCHITECTURE • PLANNING • INTERIOR DESIGN

8328-R Olive Boulevard, St. Louis, Missouri 63132
mak@makarchitects.com www.makarchitects.com
314-997-3802 314-993-3761 (Fax)

Drawing Title
FOUNDATION SECTIONS

Approved Project Director

Project Title
CONSTRUCT NEW DIETETICS
DEPARTMENT OF VETERAN AFFAIRS
MEDICAL CENTER

Location
2401 WEST MAIN STREET, MARION, IL 62959

Date 12-29-2015 **Checked** G.C. **Drawn**

Project Number 657A5-10-101
Building Number Building #2
Drawing Number S3.1
Dwg 5 of 11

Office of Construction and Facilities Management

Department of Veterans Affairs

CONTRACT DOCUMENTS