

L:\2008-Jobs\108302-VA Ft. Myers Outpatient Clinic\CAD-MEP-Sheets E100.dwg 12/11/2012 2:40:04 PM leighann.vogel

one eighth inch = one foot

one quarter inch = one foot

three eighths inch = one foot

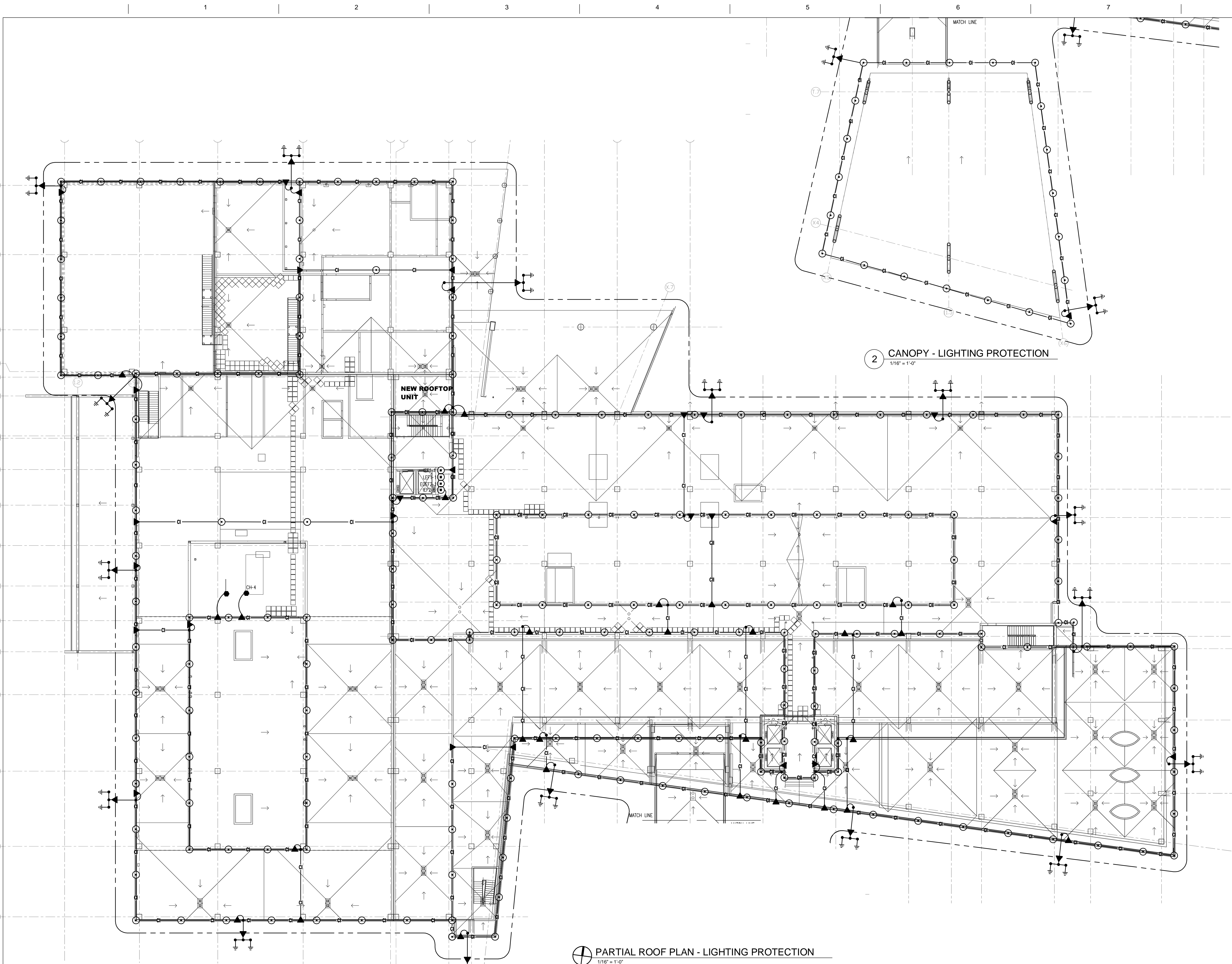
one half inch = one foot

three quarters inch = one foot

one inch = one foot

one and one half inches = one foot

three inches = one foot



- GENERAL ROOF PLAN NOTES:
1. PROVIDE COMPLETE UL LISTED, LPI CERTIFIED LIGHTNING PROTECTION SYSTEM IN FULL COMPLIANCE WITH THE LATEST EDITION OF NFPA 780 FOR NEW PORTION OF BUILDING INDICATED. THE SYSTEM SHALL INCLUDE ALL AIR TERMINALS, ROOF CONDUCTORS, DOWN CONDUCTORS SPACED NOT MORE THAN 100' APART AND GROUND RODS (5/8" 20"-0" VERTICALLY DRIVE RODS, 2 PER DOWN CONDUCTOR). PROVIDE AIR TERMINALS ON ALL ROOF MOUNTED MECHANICAL EQUIPMENT, AS REQUIRED. BOND ALL METALLIC BODIES WITHIN AREAS CALCULATED BY NFPA 780
 2. ALL ROOF MOUNTED EQUIPMENT SHALL BE ALUMINUM. ALL DOWN CONDUCTORS AND GROUND RODS SHALL BE COPPER. ALL DOWN CONDUCTORS SHALL BE CONTAINED IN MINIMUM 1" PVC CONDUIT.
 3. SUBMIT COMPLETE SHOP DRAWINGS SHOWING ROOF LAYOUT, DOWN LOCATIONS, GROUND ROD LOCATIONS, ETC. AS WELL AS ALL CONNECTION DETAILS TO ENGINEER FOR REVIEW AND APPROVAL PRIOR TO CONSTRUCTION. CONTRACTOR SHALL PERFORM ALL REQUIRED RESISTANCE AND CONTINUITY TESTING AFTER INSTALLATION IS COMPLETED.
 4. COORDINATE EXACT LOCATION OF ALL ROOFTOP MECHANICAL EQUIPMENT WITH DIVISION 15 PRIOR TO INSTALLATION AND ROUGH-IN. FIELD LOCATIONS SHALL DICTATE.

PARTIAL ROOF PLAN - LIGHTING PROTECTION
1/16" = 1'-0"

Revisions	Date

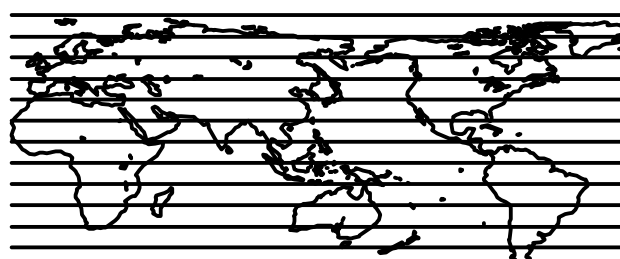
CONSULTANTS

TLC
255 S. Orange Avenue
Suite 1800
Orlando, Florida 32801
Phone: 407-841-9050
Fax: 407-843-5445
www.tlc-engineers.com
© Copyright 2008 TLC Engineering for Architecture, Inc.
EB #0000015 TLC NO:108302

Leigh Ann Vogel, P.E.
Florida License #56037

Seal

ARCHITECT/ ENGINEERS:



HELLMUTH, OBATA & KASSABAUM, INC.

ARCHITECTURE, ENGINEERING, PLANNING,
INTERIORS, GRAPHICS, CONSULTING
One Tampa City Center, Suite 1800, Tampa, FL 33602
Voice: (813) 229-0300
Fax: (813) 223-7110
Internet: <http://www.hok.com>
FL Reg. AAC001139
All trademarks & intellectual property rights reserved © 2005
Contract No.: 6CA2400

Drawing Title:
**OVERALL ROOF PLAN
LIGHTNING PROTECTION**

Approved: Checker

Project Title
Lee County Outpatient Clinic

Client Location
Cape Coral, Florida

Date
12/07/12

Checked:
LAV

Drawn
JDT

Project Number
516CA2400

Building Number

Drawing Number:

E100

RECORD DRAWINGS

Office of
Construction and
Facilities
Management

