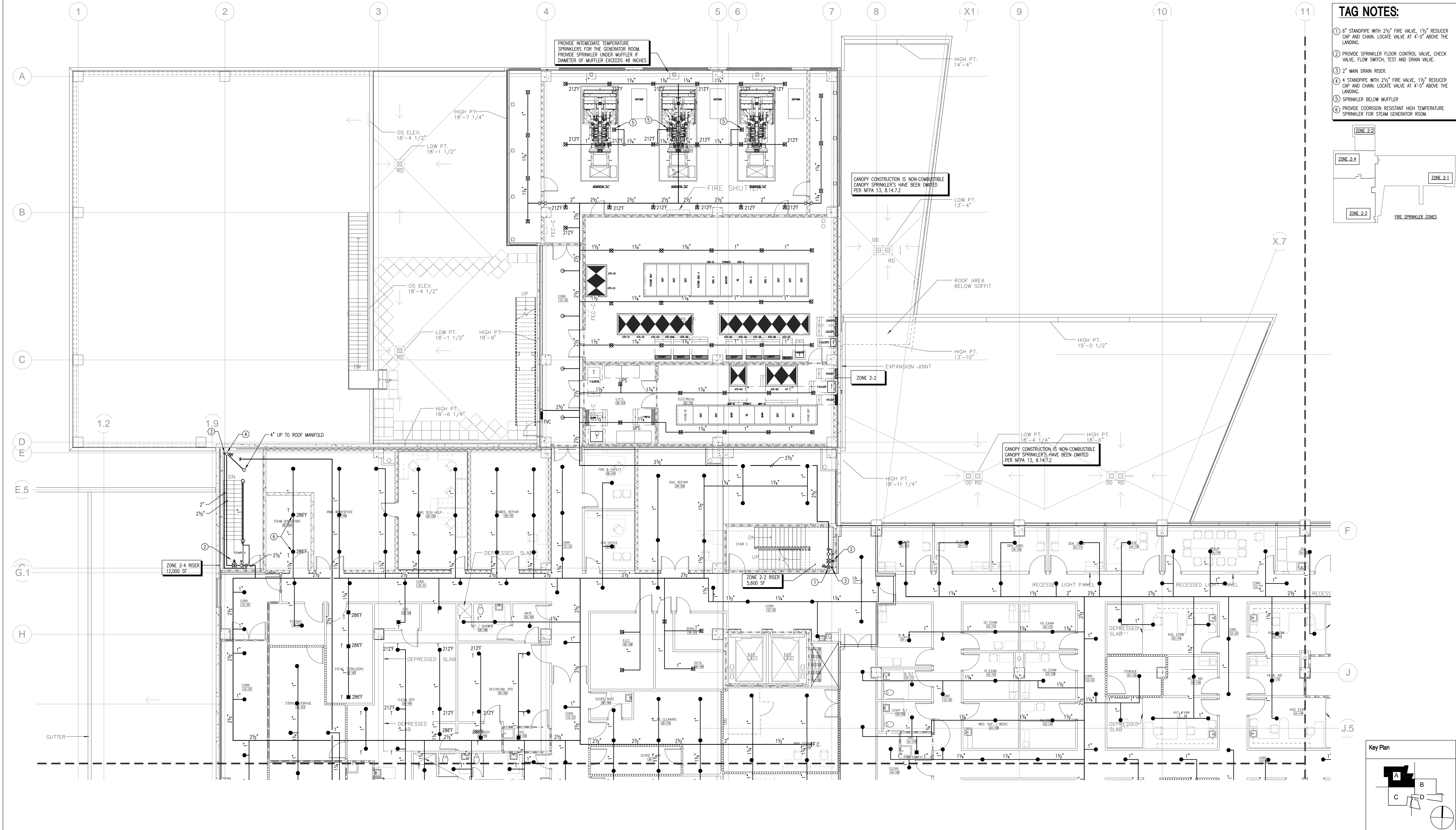
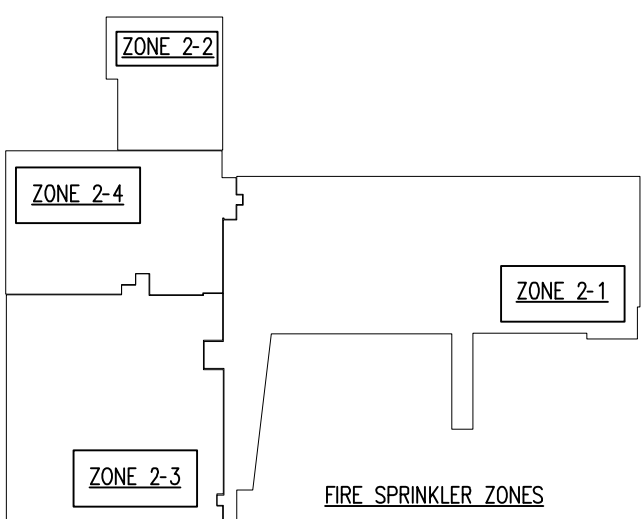


L:\2008-Jobs\108302-VA Ft. Myers Outpatient Clinic\CAD-MEP-Sheets\FX102-A.dwg 12/12/2012 9:37:10 AM edwin.fajardo

three eighths inch = one foot  
one quarter inch = one foot  
three quarters inch = one foot  
one half inch = one foot  
one inch = one foot  
one and one half inches = one foot  
three inches = one foot



- TAG NOTES:**
- ① 6" STANDPIPE WITH 2½" FIRE VALVE, 1½" REDUCER CAP AND CHAIN. LOCATE VALVE AT 4'-0" ABOVE THE LANDING.
  - ② PROVIDE SPRINKLER FLOOR CONTROL VALVE, CHECK VALVE, FLOW SWITCH, TEST AND DRAIN VALVE.
  - ③ 2" MAIN DRAIN RISER.
  - ④ 4" STANDPIPE WITH 2½" FIRE VALVE, 1½" REDUCER CAP AND CHAIN. LOCATE VALVE AT 4'-0" ABOVE THE LANDING.
  - ⑤ SPRINKLER BELOW MUFFLER.
  - ⑥ PROVIDE CORROSION RESISTANT HIGH TEMPERATURE SPRINKLER FOR STEAM GENERATOR ROOM.



PARTIAL FLOOR PLAN LEVEL 2 AREA A - FIRE PROTECTION  
1/8" = 1'-0"

<b>CONSULTANTS</b>		<b>ARCHITECT/ ENGINEERS:</b>		<b>Drawing Title:</b> PARTIAL FLOOR PLAN LEVEL 2 AREA A - FIRE PROTECTION		<b>Project Title</b> Lee County Outpatient Clinic		<b>Project Number</b> 516CA2400		<b>Office of Construction and Facilities Management</b>	
				<b>Approved: Checker</b>		<b>Client Location</b> Cape Coral, Florida		<b>Building Number</b>			
						<b>Date</b> 12/07/12		<b>Checked:</b> DCB		<b>Drawn</b> JUB	
								<b>FX102-A</b>		<b>Department of Veterans Affairs</b>	

RECORD DRAWINGS