

\\Tic2\work\2008-jobs\108302-VA FL Myers Outpatient Clinic\CAD-MEP\Sheets H705.dwg 12/11/2012 11:22:07 AM Burns.Bradford

one eighth inch = one foot

one quarter inch = one foot

three eighths inch = one foot

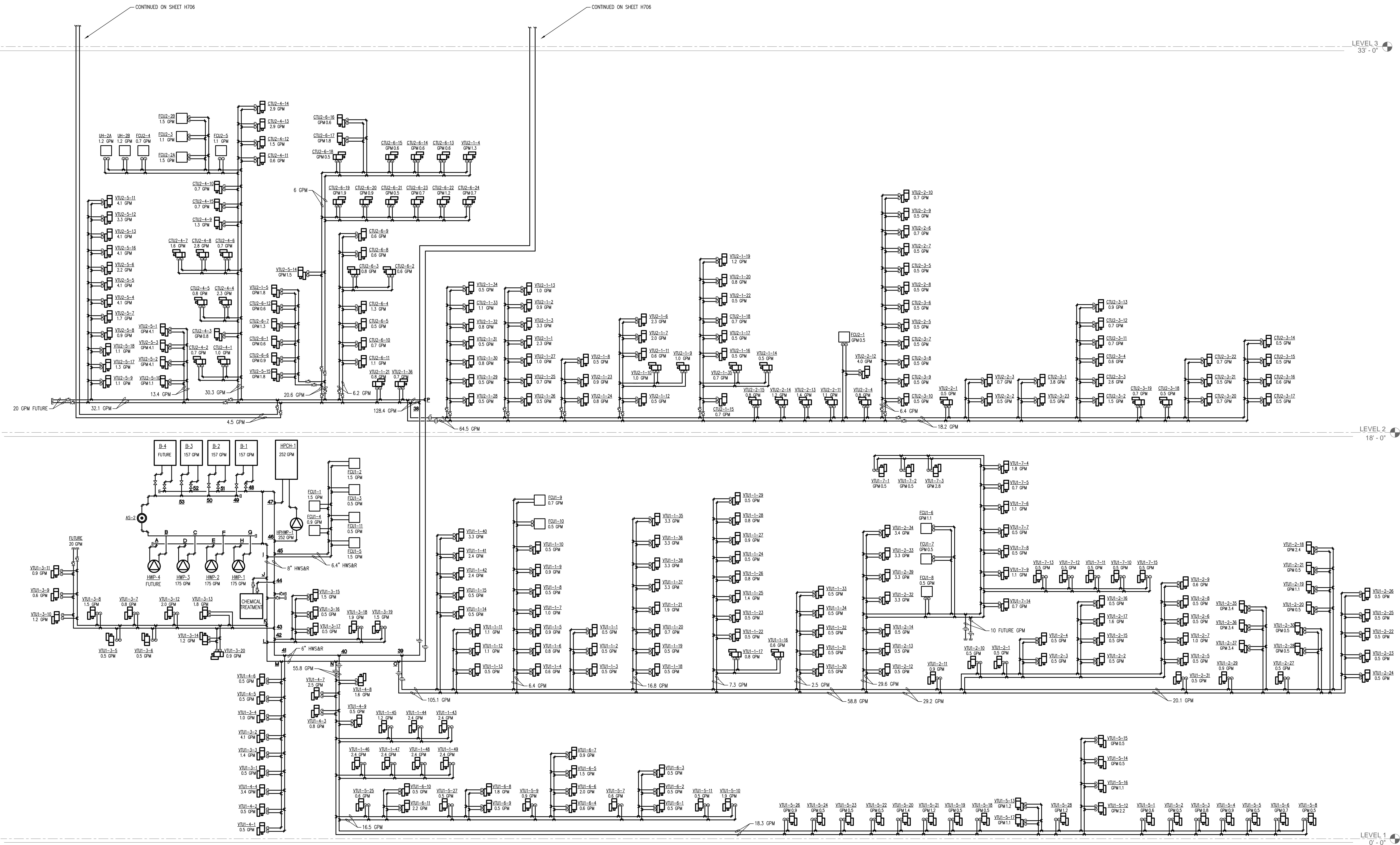
one half inch = one foot

three quarters inch = one foot

one inch = one foot

one and one half inches = one foot

three inches = one foot



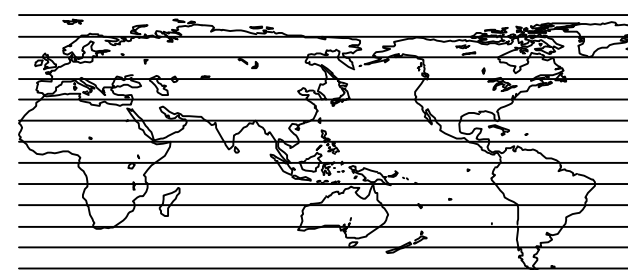
CONSULTANTS



Eric S. Cepull, P.E.
Florida License #64750

Seal

ARCHITECT/ ENGINEERS:



ARCHITECTURE, ENGINEERING, PLANNING,
INTERIORS, GRAPHICS, CONSULTING
One Tampa City Center, Suite 1900, Tampa, FL 33602
Voice: (813) 229-0800
Fax: (813) 223-7116
Internet: http://www.hok.com
FL Reg. AAO001139
All trademarks & intellectual property rights reserved © 2008
Contract No.: 6CA2400

Drawing Title:
HOT WATER SCHEMATIC

Approved: Checker

Project Title
Lee County Outpatient Clinic

Client Location
Cape Coral, Florida

Date
12/07/12

Checked:
TLC

Drawn
TLC

Project Number
516CA2400

Building Number

Drawing Number:

H705

RECORD DRAWINGS

Office of
Construction and
Facilities
Management

