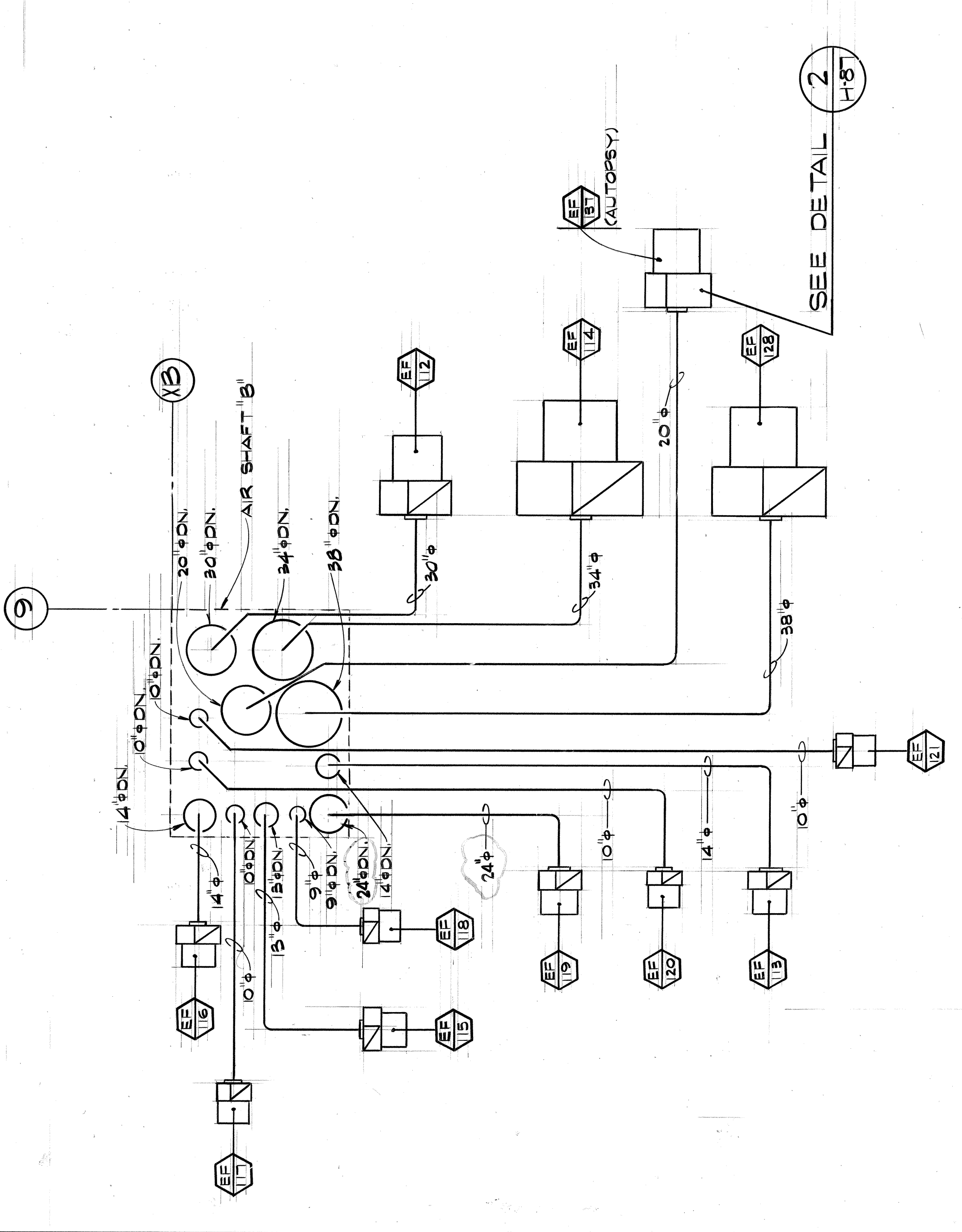
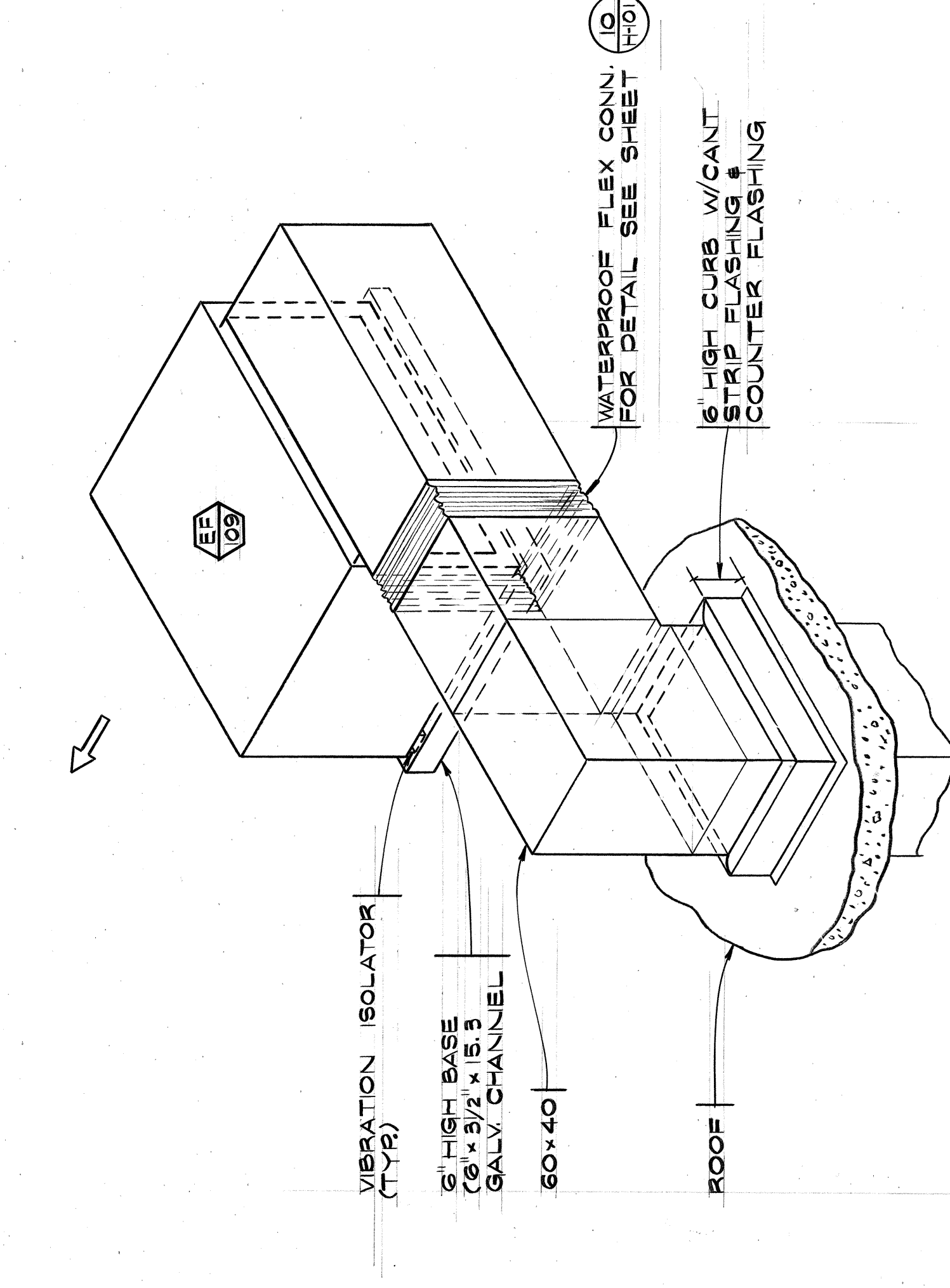


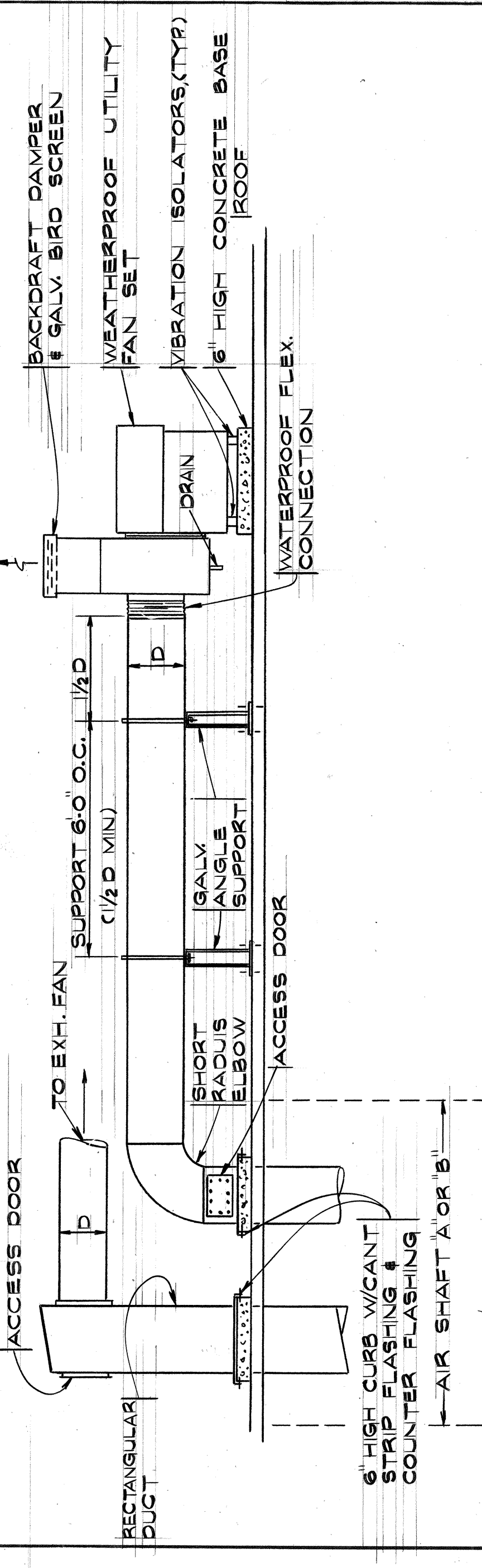
PARTIAL ROOF PLAN AIR SHAF T "A"
SCALE: 1/4" = 1'-0"



PARTIAL ROOF PLAN AIR SHAF T "B"
SCALE: 1/4" = 1'-0"



DETAIL OF FAN
NO SCALE:

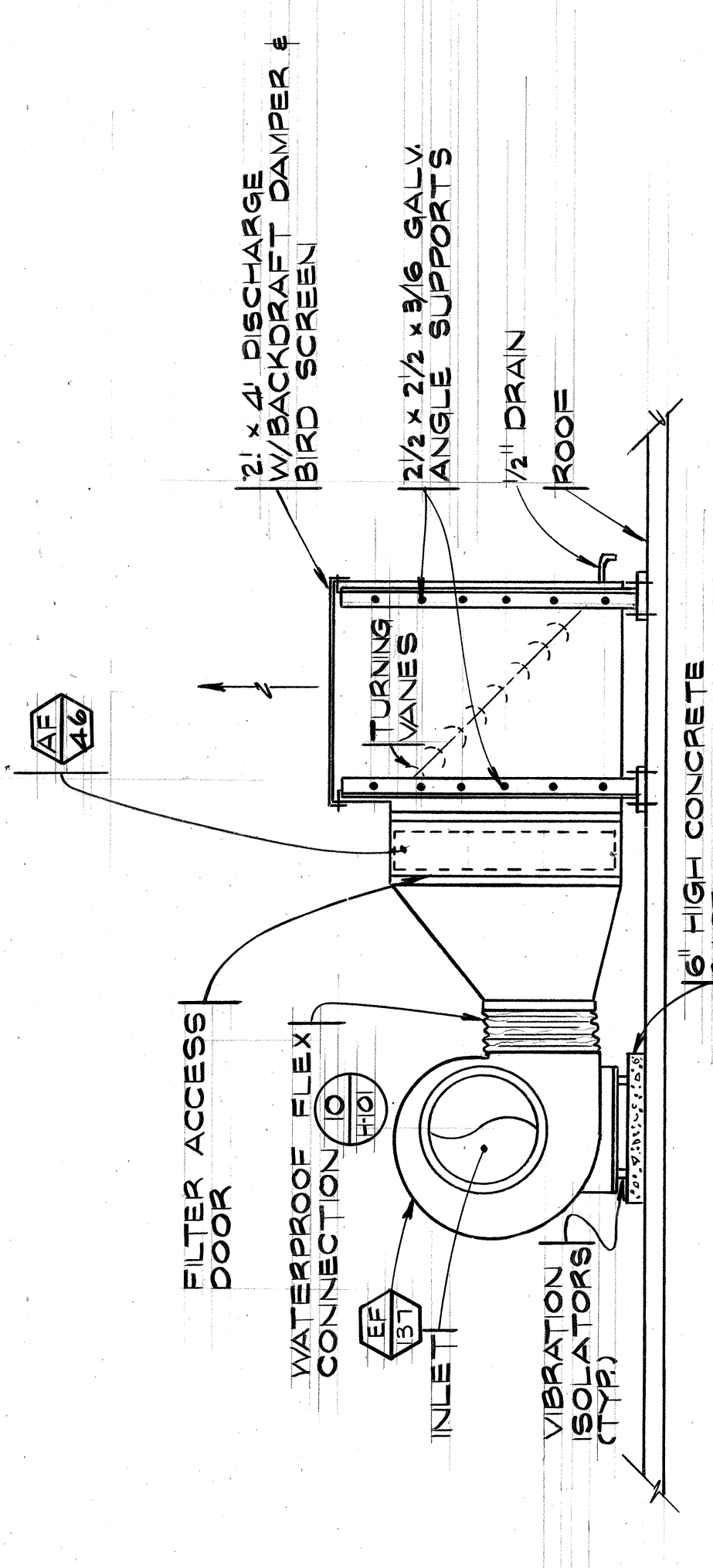


EXHAUST DUCT RISER CONNECTION TO EXHAUST FANS
TYPICAL FOR
NO SCALE

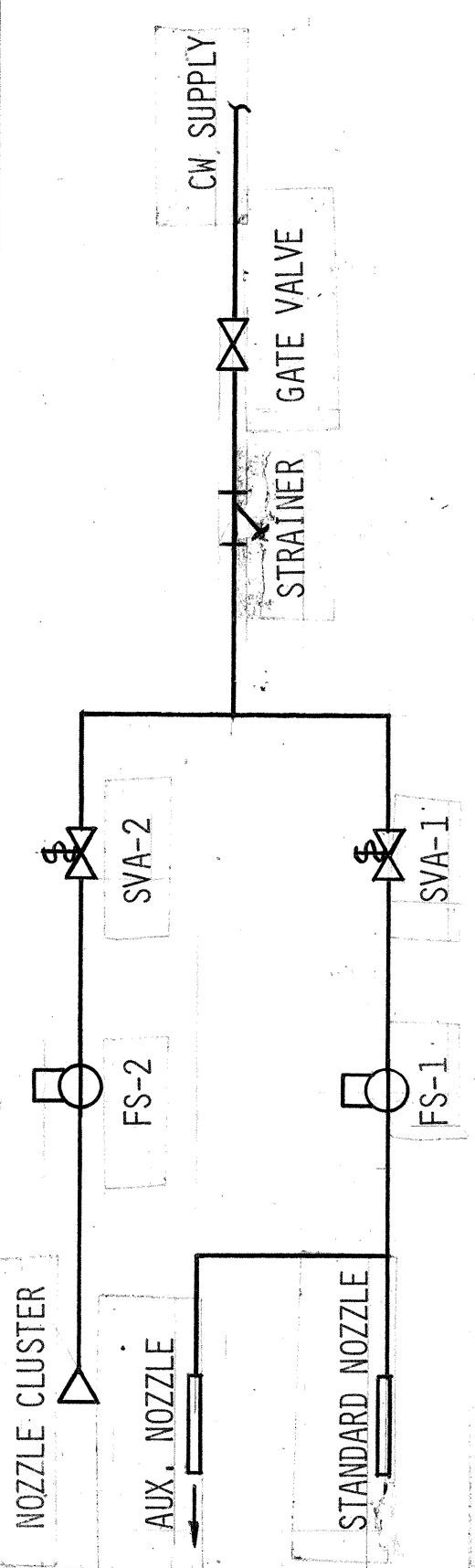
SEQUENCE OF OPERATION

1. PUSH BUTTON WILL ENERGIZE SOLENOID VALVE SVA-1 AND WATER FLOWS THRU SPRAY NOZZLE. SOLENOID VALVE SVA-2 IS ENERGIZED AND WATER FLOWS THRU NOZZLE CLUSTER. WHEN WATER FLOW IS SUFFICIENT TO CLOSE FLOW SWITCH FS-1, FAN STARTER IS ENERGIZED AND MOTOR STARTS. WATER FLOW ACTUATES FS-2, ALARM BELL WILL SOUND AND START BUTTON MAY NOW BE RELEASED. SVA-2 IS DE-ENERGIZED AND NOZZLE SPRAY IS OFF, ALARM BELL IS OFF.
2. WITH FAN OPERATING NORMALLY AND A FIRE OCCURS, STACK TEMPERATURE WILL ACTUATE THERMAL SWITCH AND CLOSE CONTACTS. SVA-2 IS ENERGIZED AND WATER FLOWS THRU EMERGENCY NOZZLE CLUSTER. WHEN WATER FLOW IS SUFFICIENT TO ACTUATE FS-2, THE CIRCUIT TO SVA-1 IS MAINTAINED AND NORMAL OPERATION SPRAY HEADERS REMAIN ON. FAN MOTOR IS RUNNING. IF WATER FLOW IS NOT SUFFICIENT TO ACTUATE FS-2, TIME DELAY RELAY WILL BE ENERGIZED AND CONTACTS WILL OPEN DE-ENERGIZING MOTOR STARTER. FAN STOPS. SVA-1 WILL BE DE-ENERGIZED AND NORMAL OPERATION WILL BE TURNED OFF. ALARM BELL IS ON.
3. WHEN FAN IS OFF AND A FIRE OCCURS, STACK TEMPERATURE WILL ACTUATE THERMAL SWITCH AND CLOSE CONTACTS. ALARM BELL IS ON. SVA-2 SOLENOID VALVE IS ENERGIZED AND WATER FLOWS THRU EMERGENCY NOZZLE CLUSTER. WHEN WATER FLOW IS SUFFICIENT TO ACTUATE FS-2, SVA-1 IS ENERGIZED AND WATER FLOWS THRU NORMAL OPERATION NOZZLE. WHEN WATER FLOW IS SUFFICIENT TO CLOSE FS-1, MOTOR STARTER IS ENERGIZED AND FAN STARTS. WHEN EMERGENCY FIRE CONDITION HAS BEEN CORRECTED, THERMAL SWITCH CONTACTS OPEN, SVA-2 DE-ENERGIZED, FS-2 CONTACTS WILL REVERSE, ALARM BELL WILL BE OFF, FAN WILL RUN IN NORMAL OPERATING CONDITION.

SEQUENCE OF OPERATION FOR EF-91
NO SCALE



AUTOPSY EXHAUST FAN
NO SCALE:

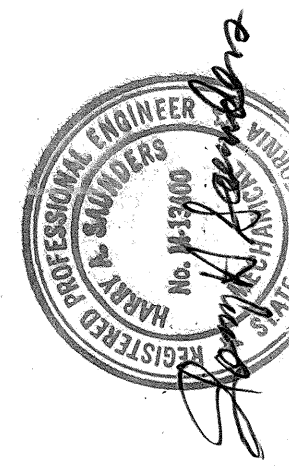


NOTE:

1. THE FOLLOWING SHALL BE FURNISHED WITH THE KITCHEN EXHAUST EF-91:
TIME DELAY RELAY & CONTACT RELAY - SOLENOID VALVES - THERMAL SWITCH - FLOW SWITCHES
TO BE FURNISHED BY ELECTRICAL:
PUSH BUTTON - MOTOR STARTER - TRANSFORMER - ALARM BELL - DISCONNECT SWITCH
2. TO BE FURNISHED BY ELECTRICAL:
PUSH BUTTON - MOTOR STARTER - TRANSFORMER - ALARM BELL - DISCONNECT SWITCH

PIPING DIAGRAM FOR EF-91
NO SCALE

AMENDMENT DRAWING
FAN ROOM PLANS & SECTIONS
PHASE 2 BLDG. 500



CHARLES LUCKMAN ASSOCIATES
PLANNING • ARCHITECTURE • ENGINEERING
820 SUNSET BLVD. LOS ANGELES, 90009
Drawn: R.E.B. Prol. Mar. 1970
Checked: D.C. Date: 7-10-74
AS BUILT

DRAWING NUMBER
500-H87
Sheet 2 of 2
PROJECT DIRECTOR
Approved: [Signature]

RETURN TO PLAN LIBRARY

FILE FOLDER NO. 20-1