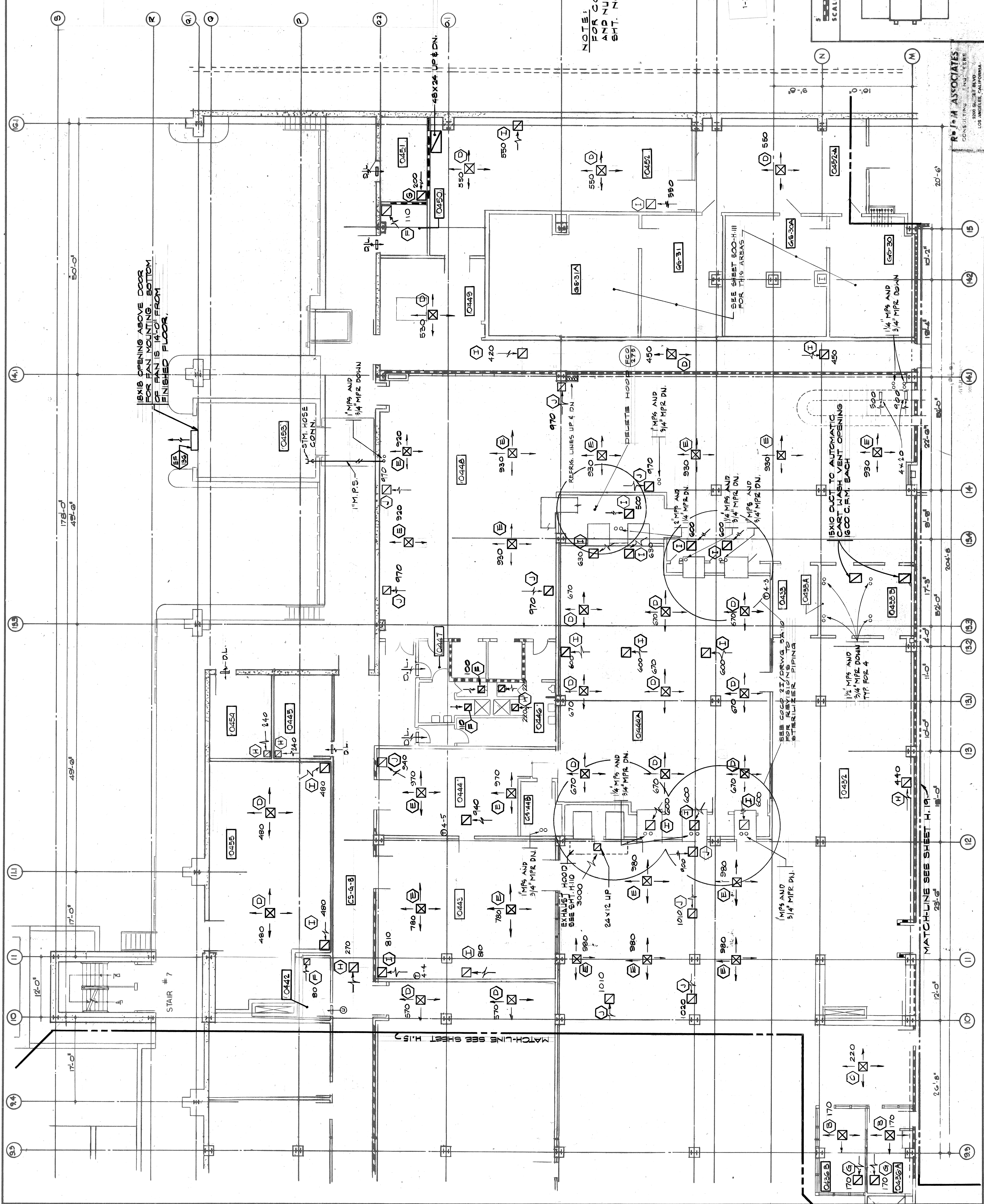


GS-30	PREFAB. FREEZER
GS-30A	PREFAB. REFRIGERATOR
GS-31	PREFAB. REFRIGERATOR
GS-31A	PREFAB. FREEZER
GS-32	NONFOOD STORAGE
O452A	DRY-FOOD STORAGE
O450	GARBAGE CAN WASH
O451	DIETETIC STORAGE
O443	PROCESS & DISTRIBUTION
O432	EQUIPMENT STORAGE
O436	OFFICE
O439	CLEAN LINEN ASSEMBLY & CART STORAGE
O441	SURGICAL PACK ROOM
O442	H.A.C.
O443	CLEAN RECEIVING
O444	VOLUNTEER & TRAINING
O444A	STERILIZATION & PREPARATION
O444B	MECH. RM.
O445	STORAGE
O446	STAFF MEN'S TOILET & LOCKERS
O447	STAFF WOMEN'S TOILET & LOCKERS
O448	DECONTAMINATION
O448A	AUTOMATIC WASHER - STERILIZER AREA
O433	EQUIP. WASHER
O433A	CART WASHER
O454	AUTOMATIC DETERGENT DISPENSING ROOM
O455	MAINTENANCE
O453	TRASH COMPACTOR ROOM
CS-6-7	CORRIDOR
O449	SCALE
CS-6-8	CORRIDOR

NOTE:

FCO-103 INSTALL 3" F DAMPERS WHERE MISSING IN CORRIDORS FOLLOW Q.P.E. DRAWING FOR REF. PIPING

NOTE: FOR COMPLETE ROOM NAMES AND NUMBERS, REFER TO SHT. NO. 500-121.



GROUND FLOOR PLAN S.W.
PHASE 2 BLDG. 500

820 BED HOSPITAL BUILDING

VETERANS ADMINISTRATION
VAH, LOS ANGELES, CALIFORNIA

Drawn: D.A.
Checked: D.C.
Project No: 7-10-74
Date: 7-10-74

AS BUILT

CHARLES LUCKMAN ASSOCIATES
PLANNING - ARCHITECTURE - ENGINEERING
1000 S. GILBERT BLVD.
LOS ANGELES, CALIF. 90015

DRAWING NUMBER
500-H-17

Sheet 552 of 522

Approved: [Signature]
PROJECT DIRECTOR [Signature]

KEY PLAN

RETURN TO PLAN LIBRARY

FILE FOLD 4-10-201