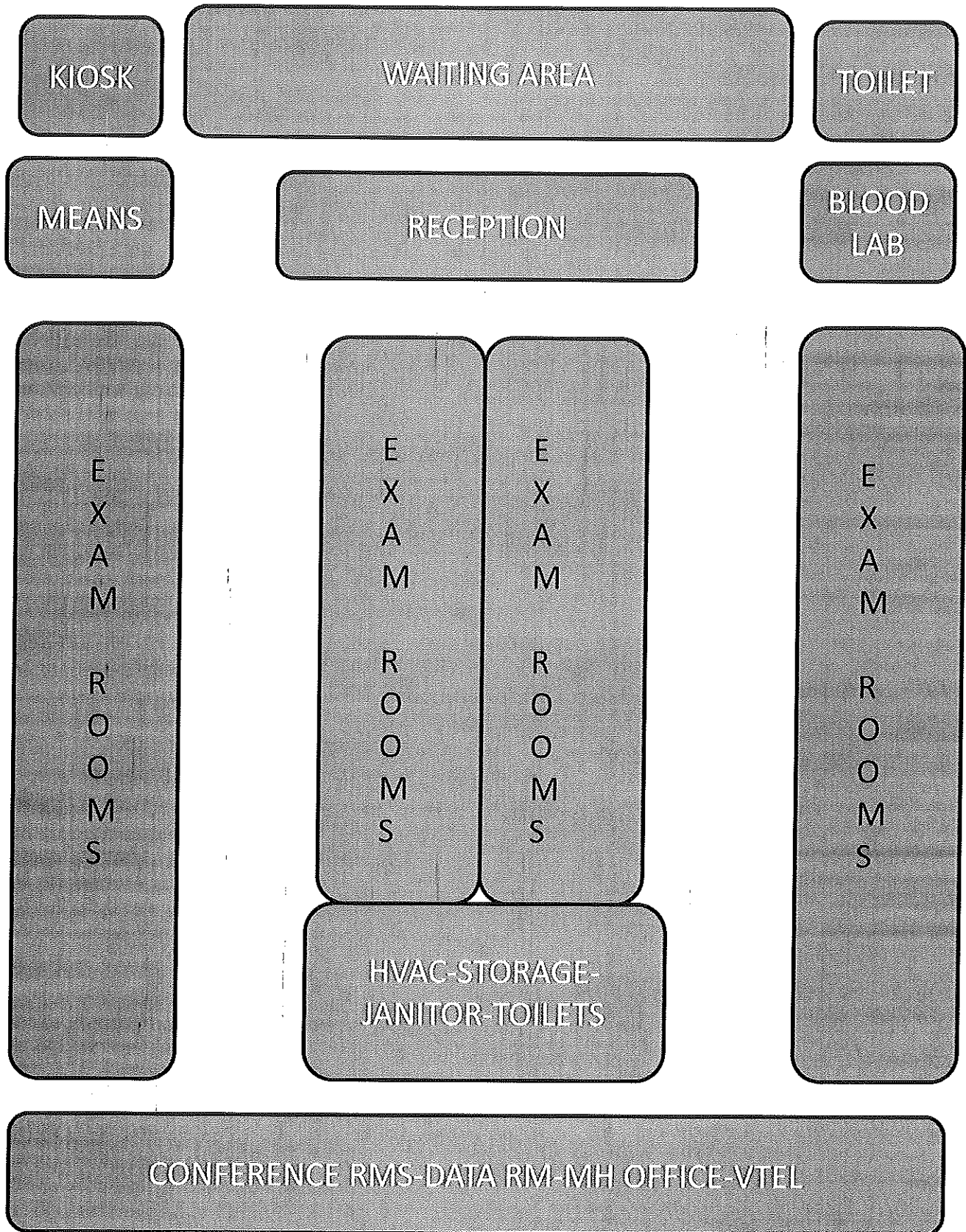
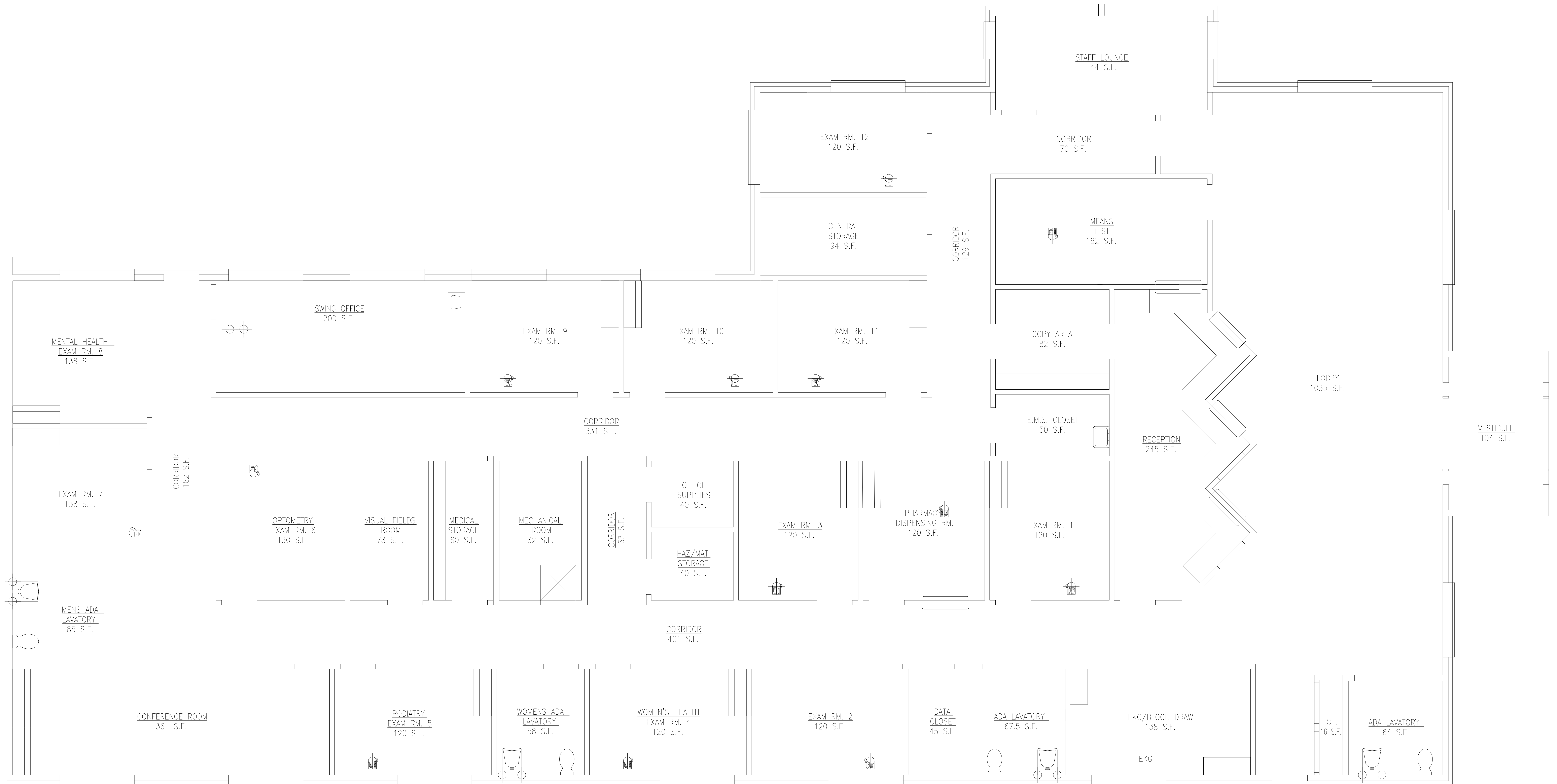


PORT JERVIS CBOC LAYOUT





PORT JERVIS CBOC
SPACE CONFIGURATION

The Department of Veterans Affairs desires to lease sufficient rentable square footage to yield approximately (6500) net usable square feet. The space will include at a minimum the following:

- 9 Exam rooms = 1218 sq. ft.
- 1 Women's Health = 120 sq. ft.
- 1 Podiatry Room = 120 sq. ft.
- 1 Mental Health Room = 138 sq. ft.
- 1 EKG / Phlebotomy lab = 130 sq. ft.
- 1 Optometry = 130 sq. ft.
- 1 Means Interview = 162 sq. ft.
- 1 Visual fields = 78 sq. ft.
- 1 Swing office = 200 sq. ft.
- 1 Pharmacy Dispensing Rm = 120 sq. ft.
- 1 Conference room = 361 sq. ft.
- 1 Waiting / Lobby Area = 1035 sq. ft.
- 4 Bathroom = 275 sq. ft.
- 1 Staff Lounge / Kitchenette = 144 sq. ft.
- 1 Mechanical Closet = 82 sq. ft.
- 1 Data closet = 45 sq. ft.
- 1 Haz Mat Room = 40 sq. ft.
- 1 Office Supply Room = 40 sq. ft.
- 1 General Storage room = 94 sq. ft.
- 1 Medical Storage room = 60 sq.ft.
- 1 Housekeeping closet = 50 sq. ft.
- 1 Reception = 245 sq. ft.
- 1 Copy area = 82 sq. ft.
- 10 minimum designated parking spaces
- Air conditioning and handicap compliant

IMPORTANT - All spaces require standard finishes with the exception of flooring. **All flooring MUST use SVT – Solid Vinyl Tile**

Please see attached proposed Layout/Floor Plan for potential relocation clinical space.