

3" = 1'-0"
0 1 2 3 4 5 6 7 8 9 10 11 12

1 1/2" = 1'-0"
0 2 4 6 8 10 12

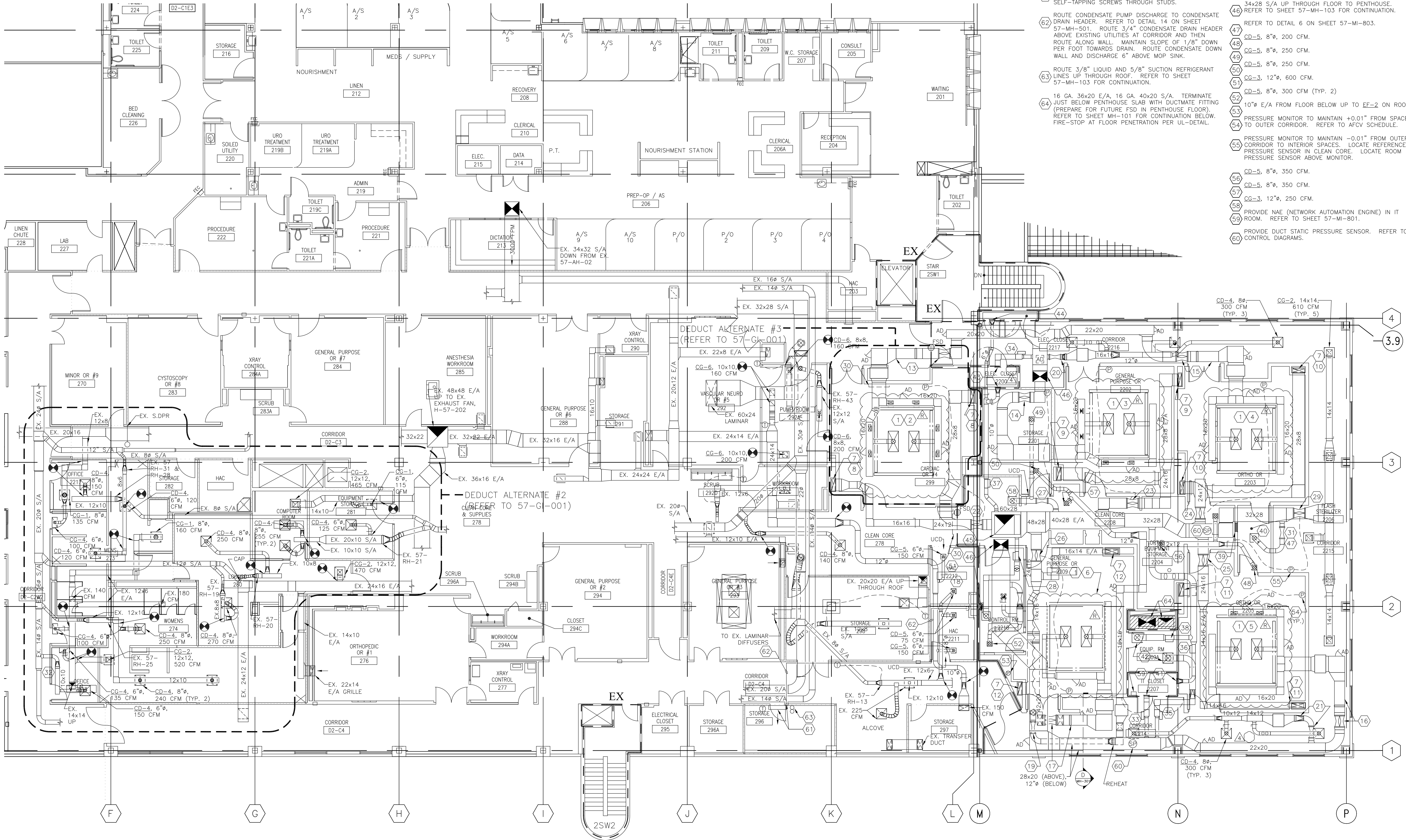
3/4" = 1'-0"
0 2 4 6 8 10 12

1/2" = 1'-0"
0 2 4 6 8 10 12

3/8" = 1'-0"
0 2 4 6 8 10 12

1/4" = 1'-0"
0 2 4 6 8 10 12

1/8" = 1'-0"
0 2 4 6 8 10 12



SECOND FLOOR HVAC PLAN
SCALE: 1/8" = 1'-0"

KEY NOTES (CONTINUED):

- 61 PROVIDE 57-AC-1 (INDOOR) CENTERED AND 8" ABOVE DOOR. ATTACH REAR PANEL USING (4) #10 SELF-TAPPING SCREWS THROUGH STUDS.
- 62 ROUTE CONDENSATE PUMP DISCHARGE TO CONDENSATE DRAIN HEADER. REFER TO DETAIL 14 ON SHEET 57-MH-501. ROUTE 3/4" CONDENSATE DRAIN HEADER ABOVE EXISTING UTILITIES AT CORRIDOR AND THEN ROUTE ALONG WALL. MAINTAIN SLOPE OF 1/8" DOWN PER FOOT TOWARDS DRAIN. ROUTE CONDENSATE DOWN WALL AND DISCHARGE 6" ABOVE MOP SINK.
- 63 ROUTE 3/8" LIQUID AND 5/8" SUCTION REFRIGERANT LINES UP THROUGH ROOF. REFER TO SHEET 57-MH-103 FOR CONTINUATION.
- 64 16 GA. 36x20 E/A, 16 GA. 40x20 S/A. TERMINATE JUST BELOW PENTHOUSE SLAB WITH DUCTMATE FITTING (PREPARE FOR FUTURE FSD IN PENTHOUSE FLOOR). REFER TO SHEET MH-101 FOR CONTINUATION BELOW. FIRE-STOP AT FLOOR PENETRATION PER UL-DETAIL.

KEY NOTES (CONTINUED):

- 45 REFER TO SHEET 57-MH-103 FOR CONTINUATION.
- 46 34x28 S/A UP THROUGH FLOOR TO PENTHOUSE. REFER TO SHEET 57-MH-103 FOR CONTINUATION.
- 47 REFER TO DETAIL 6 ON SHEET 57-MI-803.
- 48 CD-5, 8", 200 CFM.
- 49 CG-5, 8", 250 CFM.
- 50 CG-3, 12", 600 CFM.
- 51 CD-5, 8", 300 CFM (TYP. 2)
- 52 10" E/A FROM FLOOR BELOW UP TO EE-2 ON ROOF.
- 53 PRESSURE MONITOR TO MAINTAIN +0.01" FROM SPACE TO OUTER CORRIDOR. REFER TO AFCV SCHEDULE.
- 54 PRESSURE MONITOR TO MAINTAIN -0.01" FROM OUTER CORRIDOR TO INTERIOR SPACES. LOCATE REFERENCE PRESSURE SENSOR IN CLEAN CORE. LOCATE ROOM PRESSURE SENSOR ABOVE MONITOR.
- 55 CD-5, 8", 350 CFM.
- 56 CD-5, 8", 350 CFM.
- 57 CG-3, 12", 250 CFM.
- 58 PROVIDE NAE (NETWORK AUTOMATION ENGINE) IN IT ROOM. REFER TO SHEET 57-MI-801.
- 59 PROVIDE DUCT STATIC PRESSURE SENSOR. REFER TO CONTROL DIAGRAMS.

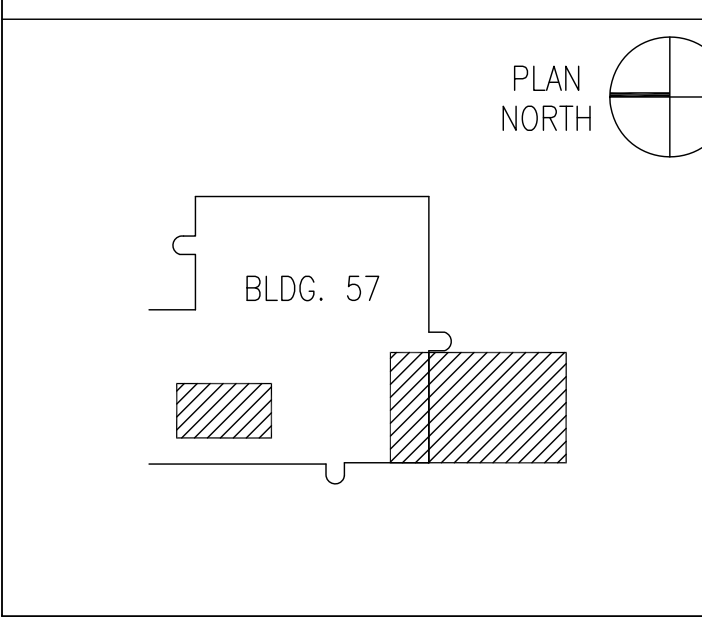
GENERAL NOTES:

1. EXISTING SUPPLY FANS, EXHAUST FANS, AND TERMINALS REQUIRE REBALANCING. REFER TO SHEET 57-MH-604 FOR WORK.
2. ACCESS PANELS IN SUSPENDED CEILINGS ARE REQUIRED FOR ALL VALVES, TRAPS, CLEANOUTS, CONTROLS, ETC. ACCESS PANELS SHALL BE FURNISHED AND INSTALLED UNDER THE ARCHITECTURAL SPECIFICATIONS.
3. COORDINATE ALL CONSTRUCTION INTERRUPTIONS WITH COTR.
4. CONTRACTOR SHALL PROVIDE TEMPORARY DUST PROTECTION WHERE DEEMED NECESSARY BY THE COTR.
5. REFER TO ARCHITECTURAL REFLECTED CEILING PLANS FOR EXACT LOCATIONS OF CEILING DIFFUSERS, REGISTERS, AND GRILLES.
6. UNLESS NOTED OTHERWISE, SUPPLY AIR DUCT SIZES FROM INLETS AND OUTLETS OF TERMINAL UNITS AND FILTER HOUSINGS TO BE FULL SIZE. REFER TO SCHEDULE.

KEY NOTES:

- 1 COORDINATE EXACT SIZE AND FLOW OF EACH DIFFUSER WITH MANUFACTURER OF FURNISHED SYSTEM.
- 2 (3) CD-1 AND (4) CD-2. BALANCE TO 2900 CFM (TOTAL, 815 CFM LAMINAR, 2085 PERIMETER).
- 3 (3) CD-1 AND (4) CD-2. BALANCE TO 2500 CFM (TOTAL, 835 CFM LAMINAR, 1665 PERIMETER).
- 4 (3) CD-1 AND (4) CD-2. BALANCE TO 2700 CFM (TOTAL, 810 CFM LAMINAR, 1890 PERIMETER).
- 5 (3) CD-1 AND (4) CD-2. BALANCE TO 2650 CFM (TOTAL, 835 CFM LAMINAR, 1815 PERIMETER).
- 6 (3) CD-1 AND (4) CD-2. BALANCE TO 2650 CFM (TOTAL, 835 CFM LAMINAR, 1815 PERIMETER).
- 7 28x8 E/A DUCT DOWN IN WALL. INSTALL STAINLESS STEEL GRILLE 7" AFF. BG-1 (TYP. OF BG-1)
- 8 BG-1. 24x18, 1325 CFM
- 9 BG-1. 24x18, 1125 CFM
- 10 BG-1. 24x18, 1225 CFM
- 11 BG-1. 24x18, 1200 CFM
- 12 BG-1. 24x18, 1200 CFM
- 13 TU-11-01, 57-SH-1, 57-AF-12T. REFER TO DETAIL 7 ON SHEET 57-MH-502 (TYP. 5).
- 14 TU-11-02, 57-SH-2, 57-AF-13T
- 15 TU-11-03, 57-SH-3, 57-AF-14T
- 16 TU-11-04, 57-SH-4, 57-AF-15T
- 17 TU-11-05, 57-SH-5, 57-AF-16T
- 18 TU-11-06, 57-AF-17T
- 19 TU-11-07, 57-AF-18T
- 20 TU-11-08, 57-AF-19T
- 21 TU-11-09, 57-AF-20T
- 22 AIR FLOW CONTROL VALVE, 57-AFCV-1.
- 23 57-AFCV-2.
- 24 57-AFCV-3.
- 25 57-AFCV-4.
- 26 57-AFCV-5.
- 27 57-AFCV-6.
- 28 57-AFCV-7.
- 29 57-AFCV-8.
- 30 IF DEDUCT ALTERNATE #3 IS ACCEPTED, CAP DUCT AT LOCATION SHOWN. DO NOT PERFORM WORK IN ROOM 299, CARDIAC OR.
- 31 57-AFCV-12.
- 32 PROVIDE NEW REHEAT COIL, 57-RH-47.
- 33 TU-11-10.
- 34 TU-11-11.
- 35 TU-11-12.
- 36 EXHAUST TERMINAL UNIT, 57-AFCV-9.
- 37 57-AFCV-10.
- 38 57-AFCV-11.
- 39 TG-2, 18x12, 8'-0" AFF (TYP. 2). PROVIDE DUCT BETWEEN SIDEWALL TRANSFER GRILLES.
- 40 CG-3, 10", 400 CFM.
- 41 TG-3, 14x10, 600 CFM S/A. TG-2, 14x10, 600 CFM E/A.
- 42 CD-4, 14", 800 CFM S/A. CG-1, 14", 800 CFM E/A.
- 43 TG-3, 14x10, 475 CFM S/A. TG-2, 14x10, 550 CFM E/A.
- 44 TG-2, 12x8, 150 CFM E/A.
- 45 46x46 E/A UP THROUGH FLOOR TO PENTHOUSE

KEY PLAN NTS



Westlake
Reed
Leskosky

One East Camelback Road
Suite 690
Phoenix, Arizona 85012
www.WRLdesign.com

RECORD DRAWING
ALL AS-BUILT CONDITIONS HAVE BEEN VERIFIED BY OTHERS. WESTLAKE REED LESKOSKY IS TO ACCEPT NO LIABILITY AND ARE TO BE HELD HARMLESS FOR ANY DISCREPANCIES BETWEEN INFORMATION INCLUDED HEREIN AND FIELD CONDITIONS.

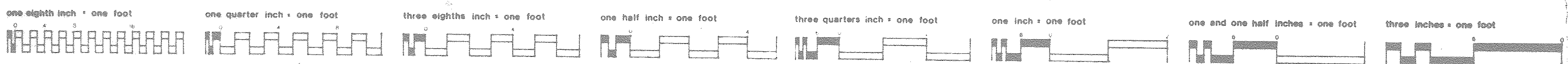
Approved: Director
Approved: Chief of Staff
Approved: Associate Director
Approved: Assistant Director
Approved: Chief, Facilities Management

Drawing Title:
SECOND FLOOR HVAC PLAN
Approved: Chief of Surgery
Approved:
Approved:

Project Title
EXPAND OR SUITE,
BUILDING 57
Building Number
57
SAVAHCS TUCSON, AZ 85723

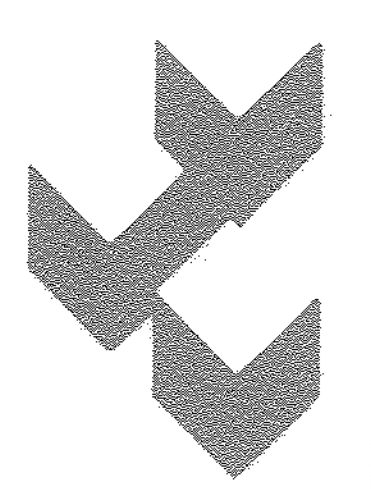
Date
03/16/09
Project No.
678-317
DRAWING NO.
57-MH-102
Dwg. 72 of 150



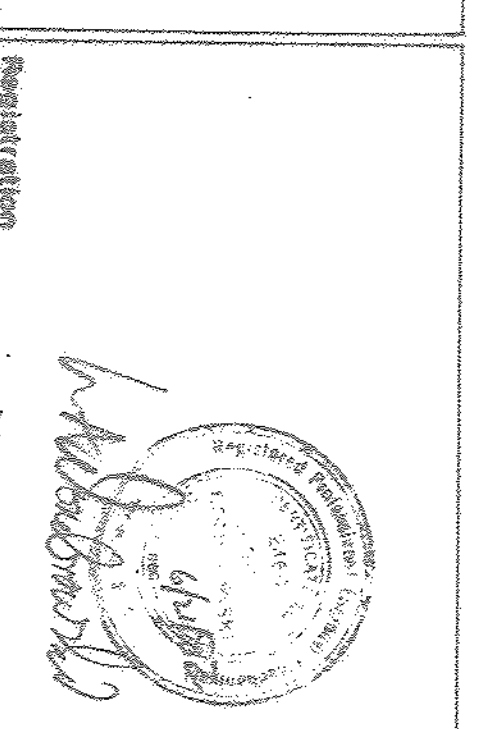


Revisions	Date	Revision	Date

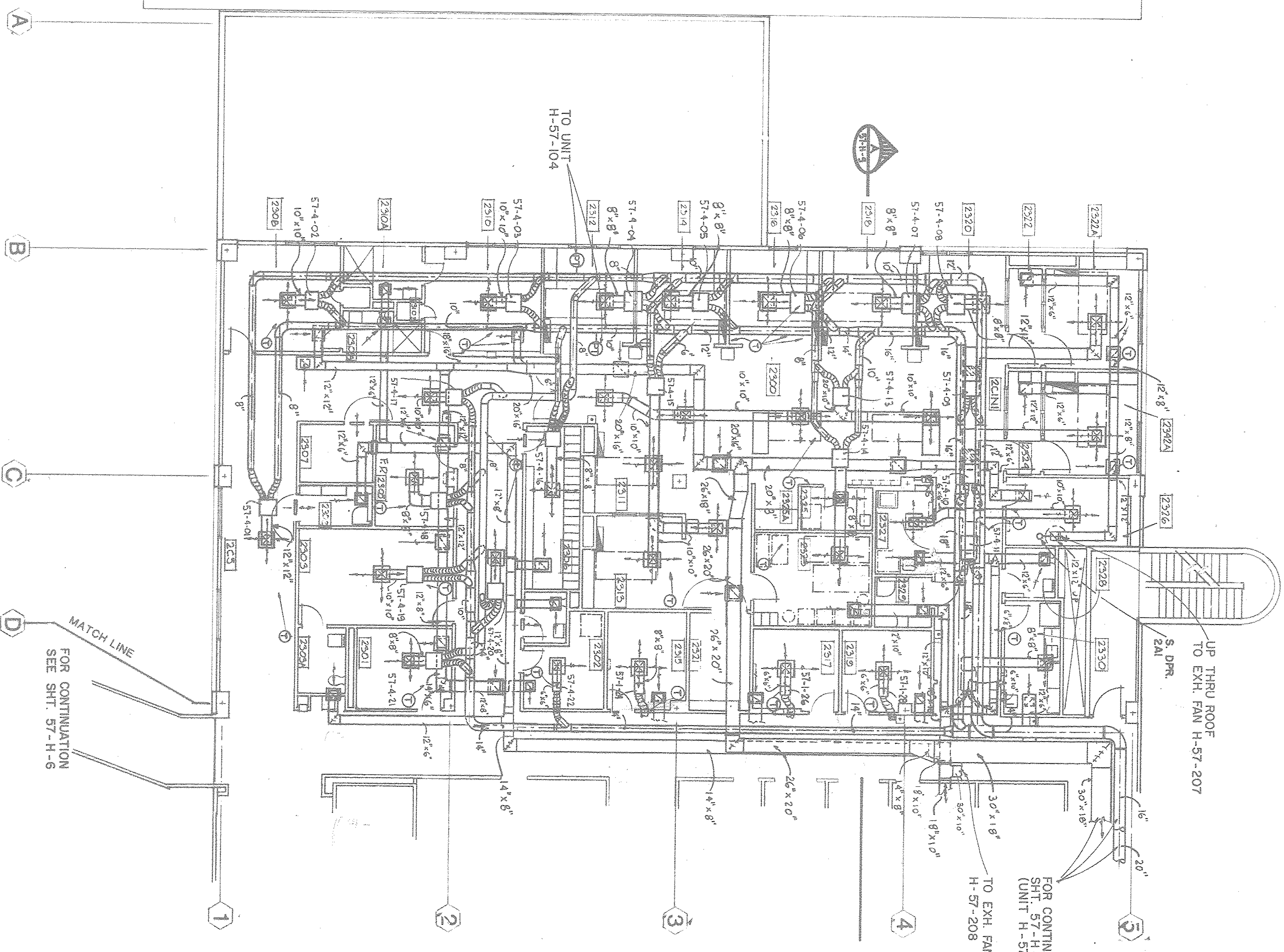
AS BUILT 9/2/86



A Tucson Joint Venture
Finical & Dombrowski and Friedman Keim & McFerron AIA
732 North Stone Avenue Tucson, Arizona 85705 792-1220



Drawing Title HVAC PLAN		Project Title Clinical Addition		Date JUL 7 1986
SECOND FLOOR - NORTH		Building Number 676-046		Project No. 676-046
Approved Project Engineer <i>[Signature]</i>	Drawn PJP	Building Number	Drawing Title 676-046	
Created WIN	Location Tucson, Arizona	Drawing Title 676-046		Project No. 676-046
Veterans Administration		Drawing Title 676-046		Project No. 676-046



2345	CONFERENCE ROOM	140	1	8 X 8	A	H-57-104	130	R	1	10 X 10	A	H-57-201	
2346	LOCKER ROOM	170	1	8 X 8	A	H-57-104	150	E	1	10 X 10	A	H-57-202	
2347	STORAGE NO. SUPPLY	0	0			H-57-104	0	E	0				
2348	ON-CALL	210	1	10 X 10	A	H-57-104	170	R	1	10 X 10	A	H-57-203	
2349A	TOILETS	0	1	18 X 6	D	H-57-104	60	E	1	10 X 10	B	H-57-204	
2349	JANITOR CLOSET	0	1	18 X 6	D	H-57-104	70	E	1	10 X 10	B	H-57-205	
2350	ON-CALL	210	1	10 X 10	A	H-57-104	170	R	1	10 X 10	A	H-57-206	
2350A	TOILETS	0	1	18 X 6	D	H-57-104	60	E	1	10 X 10	B	H-57-207	
2351	MULTI BED AREA	130	1	8 X 8	A	H-57-104	0	R	0	R A TO RH	2300	H-57-208	
2351A	MULTI BED AREA	130	1	8 X 8	A	H-57-104	0	R	0	R A TO RH	2300	H-57-209	
2352	VESTIBULE	0	0			H-57-104	60	E	1	10 X 10	B	H-57-210	
2352A	ISOLATION ROOM	380	1	12 X 12	A	H-57-104	900	E	1	12 X 12	A	H-57-211	
2353	STORAGE WITH SUPPLY	150	1	8 X 8	A	H-57-104	170	E	1	10 X 10	A	H-57-212	
2354	VESTIBULE	0	1	18 X 6	D	H-57-104	60	E	1	10 X 10	B	H-57-213	
2354A	ISOLATION ROOM	370	1	12 X 12	A	H-57-104	380	E	1	12 X 12	A	H-57-214	
2355	ADMINISTRATION OFFICE	100	1	6 X 6	A	H-57-104	0	R	0	R A TO RH	2300	H-57-215	
2356	MEAD. NURSE	860	1	10 X 10	A	H-57-104	230	R	1	10 X 10	A	H-57-216	
2357	UTILITY ROOM - SOLID	80	1	6 X 6	A	H-57-104	80	E	1	10 X 10	B	H-57-217	
2358	TOILETS	0	1	18 X 6	D	H-57-104	50	E	1	10 X 10	B	H-57-218	
2359	JANITOR CLOSET	0	1	18 X 6	D	H-57-104	60	E	1	10 X 10	B	H-57-219	
2360	LINEN CLEAN	130	1	8 X 8	A	H-57-104	130	0	R	0	R A TO RH	2300	H-57-220
2361	CORRIDOR GENERAL	330	1	10 X 10	A	H-57-104	0	R	0	R A TO RH	2300	H-57-221	
2362	CORRIDOR GENERAL	300	1	10 X 10	A	H-57-104	200	R	1	10 X 10	A	H-57-222	
2363	CORRIDOR GENERAL	800	2	12 X 12	A	H-57-104	610	R	1	14 X 14	A	H-57-223	
2364	STAIR WAY	0	0			H-57-104	0	--	0				
2365	ADMINISTRATION OFFICE	140	1	8 X 8	A	H-57-101	130	R	1	10 X 10	A	H-57-201	
2367	ADMINISTRATION OFFICE	120	1	6 X 6	A	H-57-101	110	R	1	10 X 10	A	H-57-202	
2368	ADMINISTRATION OFFICE	120	1	6 X 6	A	H-57-101	110	R	1	10 X 10	A	H-57-203	

NOT:
ALL ROOM NUMBERS FOR BUILDING 57
ARE PREFIXED WITH A "D"

MARKING BOX SCHEDULE

BLDG NO.	BOX NUMBER	TYPE	TOTAL CFM	INLET SIZE
57	57-4-01	VD	500	8
57	57-4-02	VD	210	5
57	57-4-03	VD	210	5
57	57-4-04	VD	180	5
57	57-4-05	VD	150	5
57	57-4-06	VD	180	5
57	57-4-07	VD	180	5
57	57-4-08	VD	180	5
57	57-4-09	CD	380	8
57	57-4-10	CD	370	8
57	57-4-11	CD	340	8
57	57-4-12	VD	130	5
57	57-4-13	VD	955	10
57	57-4-14	CD	230	6
57	57-4-15	VD	465	8
57	57-4-16	CD	170	6
58	57-4-17	VD	380	5
57	57-4-18	VD	180	5
57	57-4-19	VD	300	6
57	57-4-20	VD	300	6
57	57-4-21	VD	150	5
57	57-4-22	VS	120	5

6-7-1-1765