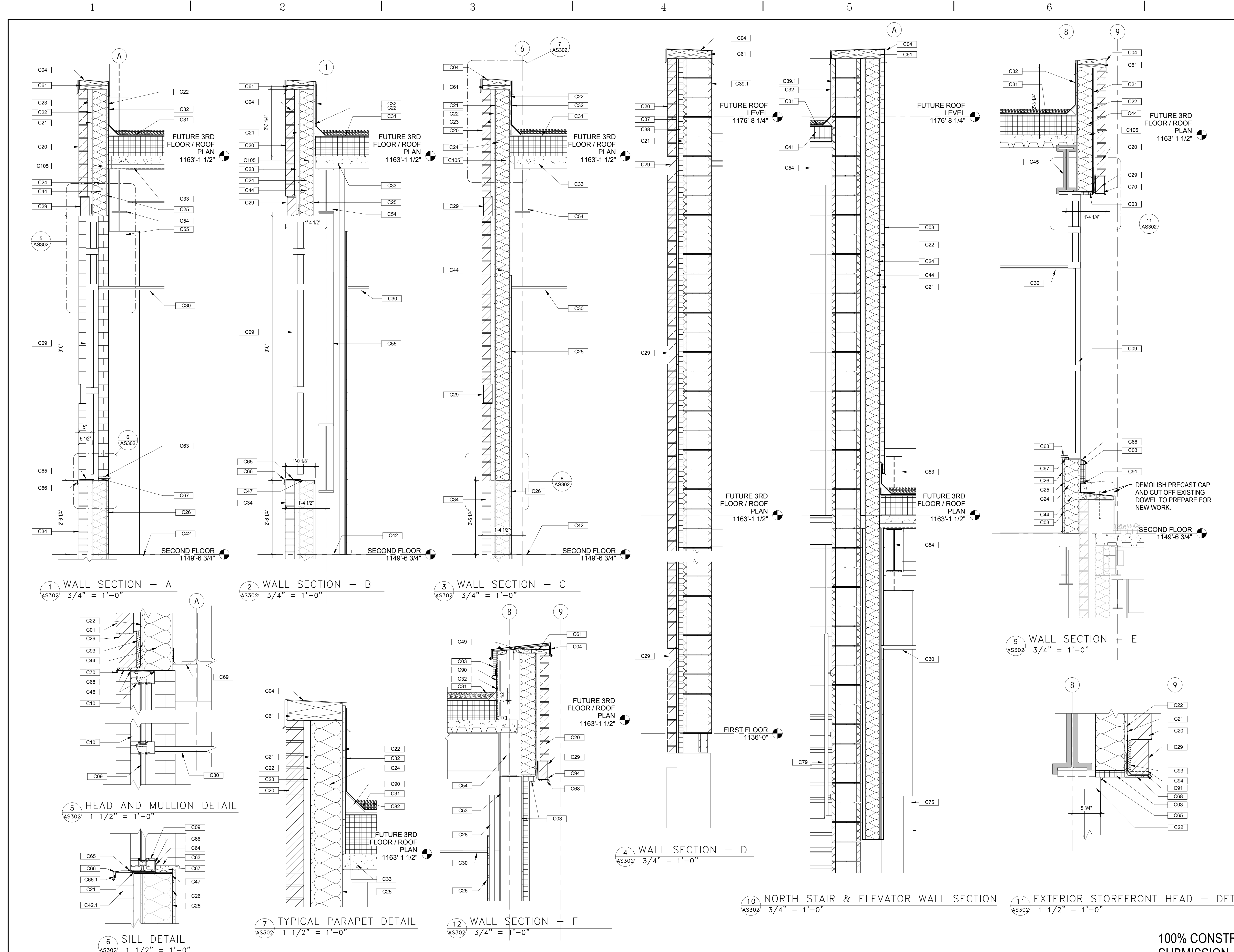
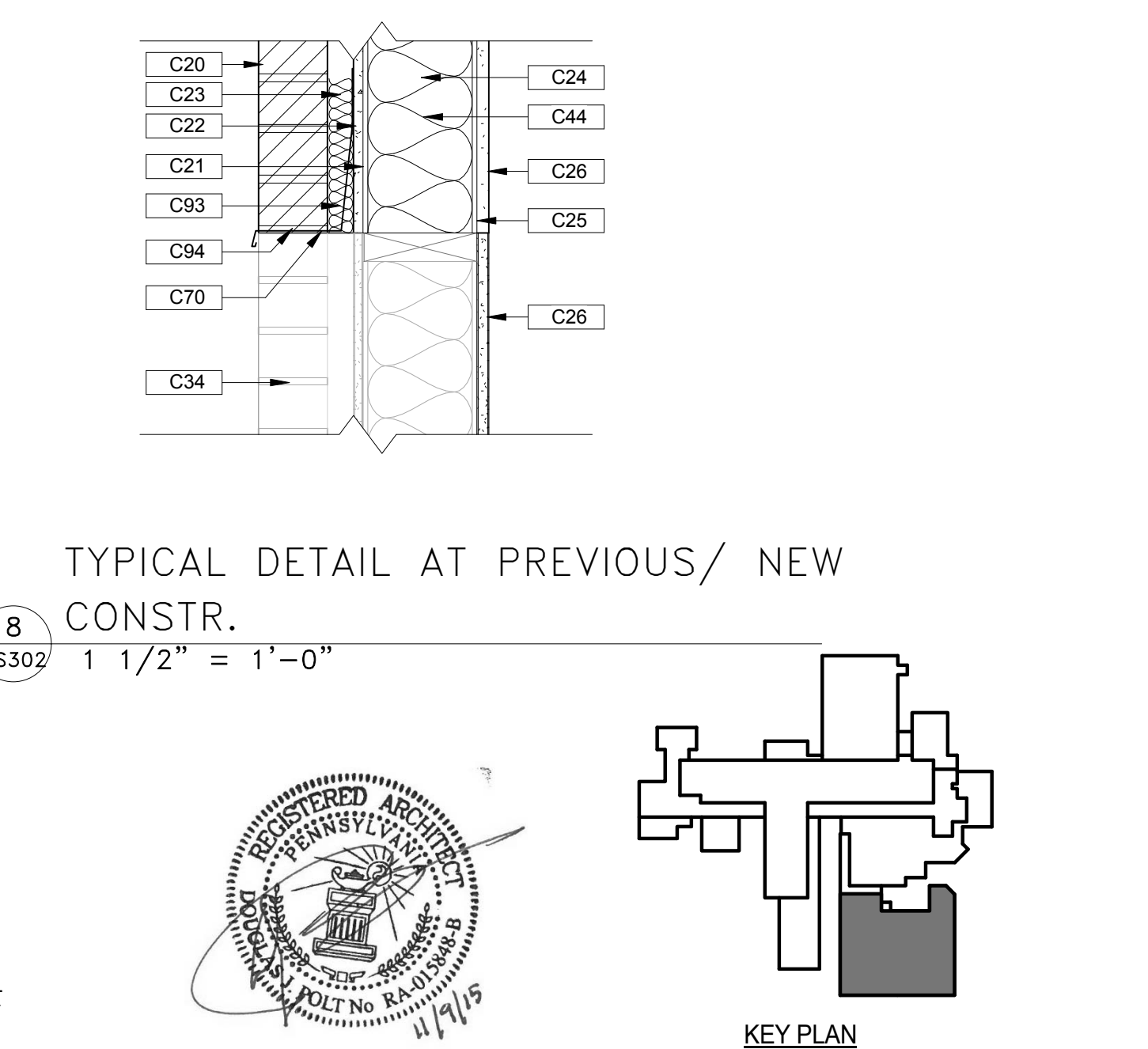


three inches = one foot  
one and one half inch = one foot  
one inch = one foot  
three quarters inch = one foot  
one half inch = one foot  
one quarter inch = one foot  
three eighths inch = one foot  
one eighth inch = one foot  
one quarter inch = one foot  
one eighth inch = one foot



CONSTRUCTION KEYNOTES	
No	NOTES
C01	NEW BRICK VENEER, MATCH EXISTING
C03	EIFS FINISHING SYSTEM ON 1 1/2" RIGID INSULATION - COLOR TO MATCH BUILDING 1
C04	PRE-FIN ALUMINUM COPING - FINISH COLOR TO MATCH EXISTING STOREFRONT FRAMES
C09	NEW ALUMINUM STOREFRONT, FRAME AND GLAZING TO MATCH EXISTING ALUMINUM WINDOWS, SEE SCHEDULE
C10	NEW ALUMINUM STOREFRONT WITH SPANDREL GLAZING, FRAMES TO MATCH EXISTING, SEE SCHEDULE
C20	BRICK - 3 5/8"
C21	WATER PROOF MEMBRANE -
C22	CEMENT BOARD - 1/2"
C23	AIR SPACE - 1 3/8"
C24	METAL STUDS - 6"
C25	MEMBRANE - VAPOR/ MOISTURE
C26	GYPSON WALL BOARD - 5/8"
C28	METAL STUDS - 2 1/2"
C29	SOLDIER COURSE RECESSED 5/8"
C30	ACOUSTIC TILE CEILING - 2' X 2' W/ GRID
C31	EPDM ROOFING SYSTEM OVER R-40 (AVG) RIGID ROOF INSULATION 1/8" PER FOOT SLOPE TO DRAIN
C32	RUN EPDM ROOFING UP PARAPET WALL TO TERMINATION BAR
C33	CAST-IN-PLACE CONCRETE AND METAL DECK 5 1/4"
C34	EXISTING EXTERIOR WALL CONSTRUCTION
C37	AIR SPACE - 1"
C38	RIGID INSULATION - 2"
C39.1	CMU - 12"
C40	FINISHED GRADE
C41	RIGID INSULATION - 5"
C42	EXISTING CONC AND METAL DECK
C42.1	EXISTING PARAPET WALL
C44	6" BATT INSULATION (TYP.)
C45	2 HR SPRAY ON FIREPROOFING
C46	SEALANT & BACKER-ROD
C47	16 GA. STEEL ANGLE FOR MOUNTING OF STOREFRONT WINDOWS
C49	2x4 TREATED BLOCKING
C53	STRUCTURAL COLUMN - SEE STRUCTURAL DRAWINGS FOR SIZES & LOCATIONS
C54	STRUCTURAL BEAMS - SEE STRUCTURAL DRAWINGS FOR SIZES & LOCATIONS. 2 HR SPRAY FIREPROOFING TYP. AT ALL PRIMARY AND SECONDARY MEMBERS
C55	STRUCTURAL BRACING - SEE STRUCTURAL DRAWINGS FOR SIZES & LOCATIONS
C61	TREATED BLOCKING - TYP.
C63	SOLID SURFACE WINDOW SILL
C64	COLORLED SEALANT - TO MATCH SILL
C65	MANUFACTURER APPROVED EXTERIOR SEALANT - TO MATCH STOREFRONT FRAMES
C66	STOREFRONT WINDOW FLASHING. TO RUN BETWEEN THE BRACKET AND FRAME. FLASHING SHOULD RUN UP THE INSIDE FLANGE OF BRACKET
C66.1	CLIPS FOR FLASHING. ANCHOR INTO BRICK MASONRY
C67	1x BLOCKING
C68	CONTINUOUS L5"x5"x 1/2"
C69	CONTINUOUS L5"x3"x 1/4"
C70	THROUGH WALL FLASHING
C75	CORNER GUARD - APPLIED WITH CONSTRUCTION ADHESIVE
C79	CONCRETE FILLED METAL PAN STAIR SYSTEM AND LANDING
C82	STONE ROOF BALLAST. RE USE EXISTING, AS MUCH AS POSSIBLE
C90	TREATED WOOD CANT
C91	FLASHING WITH VENT AND DRIP EDGE
C93	MORTAR NET - TYP
C94	FULL HEAD JOINT WITH WEEPS
C105	FIRE STOP



Additional:

Revisions:

Consultants:

**BURDETTE KOEHLER MURPHY & ASSOCIATES, INC.**  
MECHANICAL / ELECTRICAL CONSULTING ENGINEERING  
1416 CLARKVIEW ROAD  
BALTIMORE, MARYLAND 21209  
410.323.0800 - FAX 410.317.2543

**RICKERT ENGINEERING, INC.**  
STRUCTURAL ENGINEERING  
8913 WALTHAM WOODS ROAD, SUITE 500  
BALTIMORE, MARYLAND 21234  
410.663.5110 - FAX 410.663.5114

**BUILDING COST CONSULTANTS**  
COST ESTIMATING  
12917 - 30TH AVENUE  
PLATTSBURGH, NEBRASKA 68048  
402.298.8260 - FAX 402.298.8290

**KOFFEL ASSOCIATES, INC.**  
FIRE PROTECTION ENGINEERING  
8815 CENTRE PARK DR., SUITE 200  
COLUMBIA, MARYLAND 21045  
410.750.2246 - FAX 410.750.2588

**WHITMAN, REQUARDT & ASSOCIATES, LLP**  
CIVIL ENGINEERING  
891 South Caroline Street  
Baltimore, MD 21231  
410.235.3450 - FAX: 410.243.5716

**ROBERT L. SEYMOUR ASSOCIATES**  
AUTOMATIC TRANSPORT ENGINEERING  
162 THOMAS JOHNSON DR. SUITE 200  
FREDERICK, MARYLAND 21702  
301.662.8112 - FAX 301.662.8117

**DERBY de enterprises**

**ARCHITECTURE PLANNING ENGINEERING**  
2215 Conowingo Rd, Suite 100  
Bel Air, Maryland 21015-1436  
410.803.0009  
fax 410.836.6611

**JAMES E. VAN ZANDT**  
**VETERANS ADMINISTRATION**  
**MEDICAL CENTER**

Project Title

WALL SECTIONS

Approved: Associate Director for Operations:

Approved: Director, Medical Center:

Project Title

EXPAND OUTPATIENT WITH SECOND FLOOR ADDITION

Building No:

Checked: CPI CAJ

Drawn: JSK/ BKP/ DEK

Location:

Date

10/ 30/ 15

Project No.

503-308

Drawing No.

AS302

Dwg. 23 Of 112

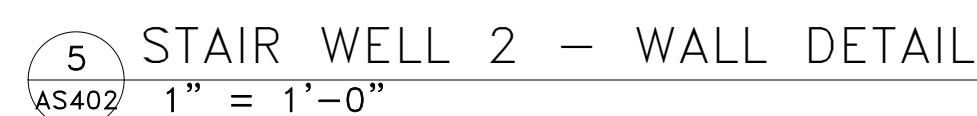
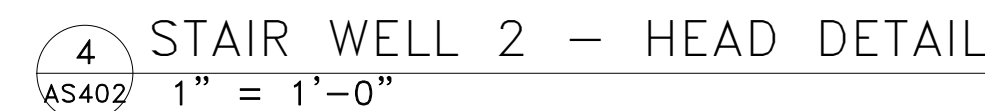
100% CONSTRUCTION BID DOCUMENT


DELLC JOB No. 140701D

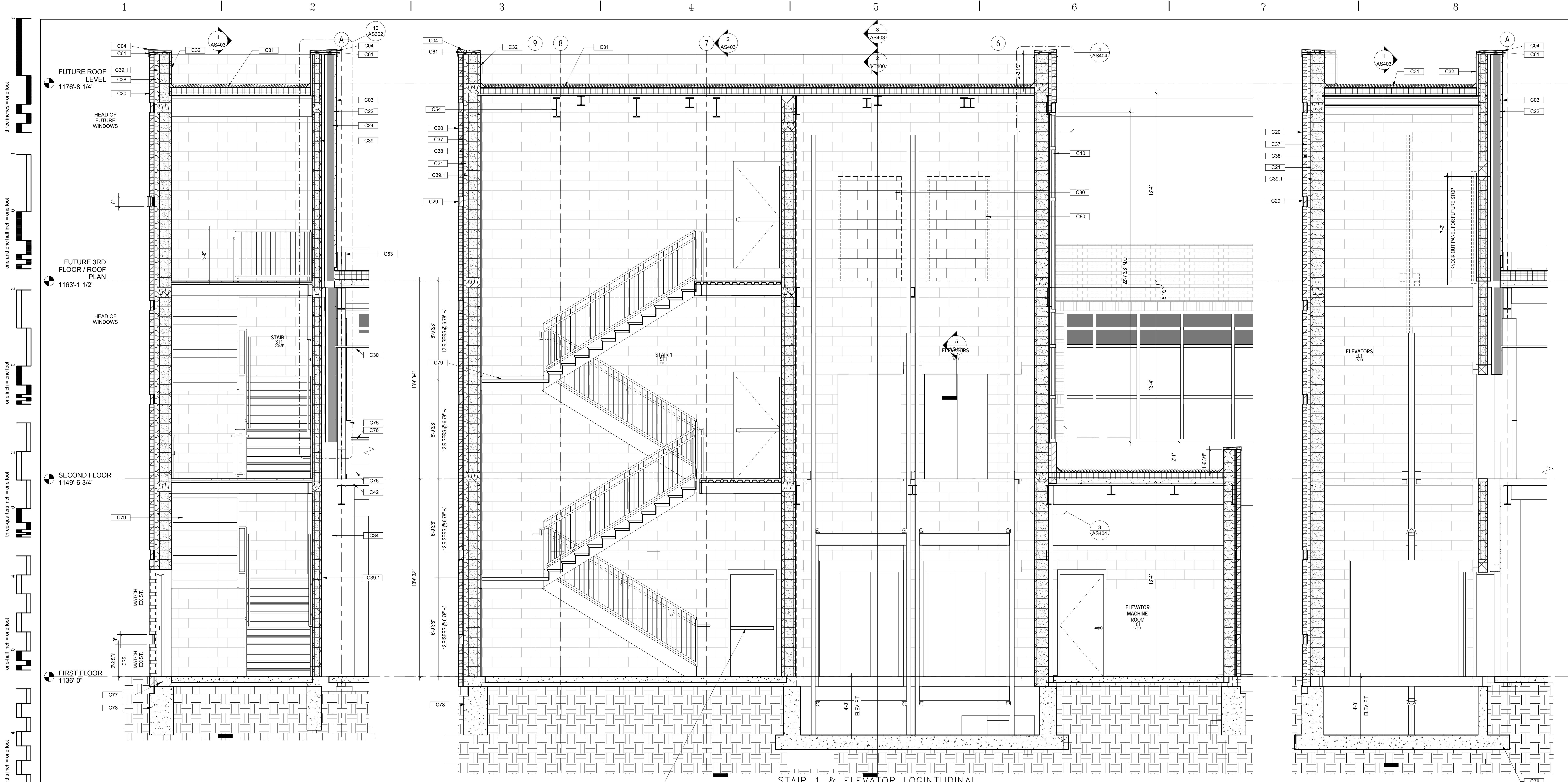
SUBMISSION - FULLY SPRINKLERED







Additional:		Date:	SUBMISSION		PROJECT INFORMATION		DEPARTMENT OF VETERANS AFFAIRS													
			<b>BURDETTE KOEHLER MURPHY &amp; ASSOCIATES, INC.</b>  MECHANICAL / ELECTRICAL CONSULTING ENGINEERING 1416 CLARKVIEW ROAD BALTIMORE, MARYLAND 21209 410.323.0600 - FAX: 410.377.2243 <b>RICKETT ENGINEERING, INC.</b>  STRUCTURAL ENGINEERING 8813 WALTHAM WOODS ROAD, SUITE 500 BALTIMORE, MARYLAND 21234 410.663.5110 - FAX 410.663.5114		<b>BUILDING COST CONSULTANTS</b>  COST ESTIMATING 12917 - 30TH AVENUE PLATTSMOUTH, NEBRASKA 68048 402.298.8260 - FAX 402.298.8260  <b>KOFFEL ASSOCIATES, INC.</b>  FIRE PROTECTION ENGINEERING 5815 CENTRE PARK DR., SUITE 200 COLUMBIA, MARYLAND 21045 410.750.2246 - FAX 410.750.2588		<b>WHITMAN, REQUARDT &amp; ASSOCIATES, LLP</b>  CIVIL ENGINEERING 801 South Caroline Street Baltimore, MD 21231 410.235.3450 - FAX: 410.243.5716  <b>ROBERT L. SEYMOUR ASSOCIATES</b>  AUTOMATIC TRANSPORT ENGINEERING 302 THOMAS JOHNSON DR., SUITE 200 FREDERICK, MARYLAND 21702 301.662.8112 - FAX 301.662.8117		<b>DERBY</b>   <b>enterprises</b>  ARCHITECTURE PLANNING ENGINEERING  2215 Conowingo Rd, Suite 100 Bel Air, Maryland 21015-1436 410.833.0009 fax 410.836.6611		<b>JAMES E. VAN ZANDT</b>  <b>VETERANS ADMINISTRATION</b>  <b>MEDICAL CENTER</b>		Drawing Title <b>STAIR#2 ENLARGEMENTS</b>  Approved: Associate Director for Operations:  Approved: Director, Medical Center:		Project Title <b>EXPAND OUTPATIENT WITH SECOND FLOOR ADDITION</b>  Building No:  Location:		Date <b>10/ 30/ 15</b>  Project No. <b>503-308</b>  Drawing No. <b>AS402</b>  Dwg. 25 Of 112		Checked: C/PJ CAJ  Drawn: JSK/ BKP/ DEK	



2 STAIR 1 TRANSVERSE SECTION  
AS403 3/8" = 1'-0"

1 STAIR 1 & ELEVATOR LOGINTUDINAL SECTION  
AS403 3/8" = 1'-0"

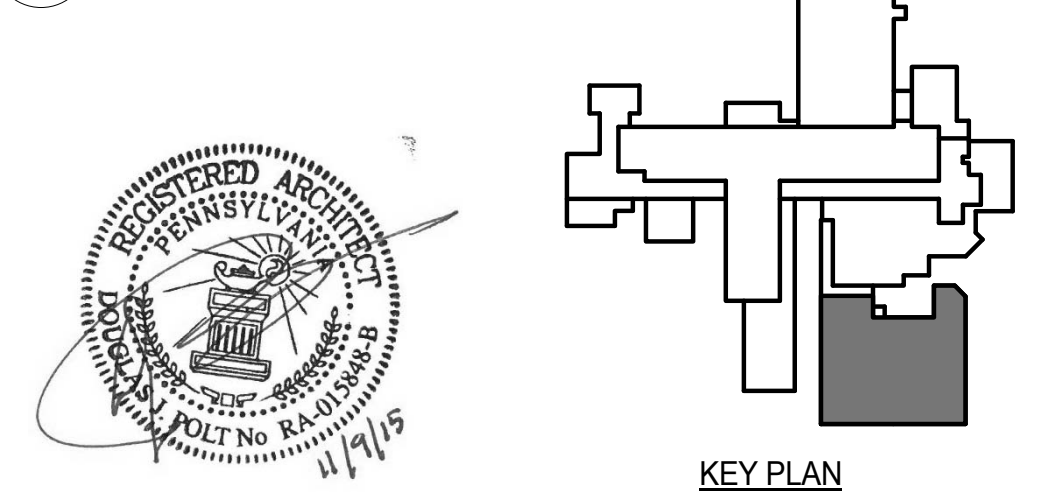
3 ELEVATOR SECTION  
AS403 3/8" = 1'-0"

NEW WORK KEYNOTES	
Key Value	DESCRIPTION
C03	EIFS FINISHING SYSTEM ON 1 1/2" RIGID INSULATION - COLOR TO MATCH BUILDING 1
C04	PRE-FIN ALUMINUM COPING - FINISH COLOR TO MATCH EXISTING STOREFRONT FRAMES
C10	NEW ALUMINUM STOREFRONT WITH SPANDREL GLAZING, FRAMES TO MATCH EXISTING, SEE SCHEDULE
C20	BRICK-3 5/8"
C21	WATER PROOF MEMBRANE-
C22	CEMENT BOARD- 1/2"
C24	METAL STUDS - 6"
C29	SOLDIER COURSE RECESSED 5/8"
C30	ACOUSTIC TILE CEILING - 2' X 2' W/ GRID
C31	EPDM ROOFING SYSTEM OVER R-40 (AVG) RIGID ROOF INSULATION 1/8" PER FOOT SLOPE TO DRAIN
C32	RUN EPDM ROOFING UP PARAPET WALL TO TERMINATION BAR

NEW WORK KEYNOTES	
Key Value	DESCRIPTION
C34	EXISTING EXTERIOR WALL CONSTRUCTION
C37	AIR SPACE - 1"
C38	RIGID INSULATION - 2"
C39	CMU - 8"
C39.1	CMU - 12"
C42	EXISTING CONC AND METAL DECK
C53	STRUCTURAL COLUMN - SEE STRUCTURAL DRAWINGS FOR SIZES & LOCATIONS
C54	STRUCTURAL BEAMS - SEE STRUCTURAL DRAWINGS FOR SIZES & LOCATIONS, 2 HR SPRAY FIREPROOFING TYP. AT ALL PRIMARY AND SECONDARY MEMBERS
C61	TREATED BLOCKING - TYP.
C75	CORNER GUARD - APPLIED WITH CONSTRUCTION ADHESIVE

NEW WORK KEYNOTES	
Key Value	DESCRIPTION
C76	HAND AND CRASH RAIL - AT CORRIDORS
C77	CONCRETE SLAB ON GRADE - SEE STRUCTURAL DRAWINGS
C78	FOUNDATION - SEE STRUCTURAL DRAWINGS FOR SIZES & LOCATIONS
C79	CONCRETE FILLED METAL PAN STAIR SYSTEM AND LANDING
C80	CREATE ROUGH OPENING FOR FUTURE ELEVATOR DOOR, TEMPORARILY FILL WITH CMU
C107	PANIC HARDWARE - SEE DOOR SCHEDULE AND SPECIFICATIONS

NOTE:  
1. ALL STAIR TREADS TO BE GROOVED CONCRETE.



Additional:

Revisions:

Consultants:

**BURDETTE KOEHLER MURPHY & ASSOCIATES, INC.**  
MECHANICAL / ELECTRICAL CONSULTING ENGINEERING  
1416 CLARKVIEW ROAD  
BALTIMORE, MARYLAND 21209  
410.323.0800 - FAX 410.317.2543

**RICKERT ENGINEERING, INC.**  
STRUCTURAL ENGINEERING  
8913 WALTHAM WOODS ROAD, SUITE 500  
BALTIMORE, MARYLAND 21234  
410.663.5110 - FAX 410.663.5114

**BUILDING COST CONSULTANTS**  
COST ESTIMATING  
12917 - 30TH AVENUE  
PLATTSMOUTH, NEBRASKA 68048  
402.298.8260 - FAX 402.298.8290

**KOFFEL ASSOCIATES, INC.**  
FIRE PROTECTION ENGINEERING  
8815 CENTRE PARK DR., SUITE 200  
COLUMBIA, MARYLAND 21045  
410.750.2246 - FAX 410.750.2588

**WHITMAN, REQUARDT & ASSOCIATES, LLP**  
CIVIL ENGINEERING  
891 South Caroline Street  
Baltimore, MD 21231  
410.235.3450 - FAX: 410.243.5716

**ROBERT L. SEYMOUR ASSOCIATES**  
AUTOMATIC TRANSPORT ENGINEERING  
162 THOMAS JOHNSON DR. SUITE 200  
FREDERICK, MARYLAND 21702  
301.662.8112 - FAX 301.662.8117

**DERBY de enterprises**  
ARCHITECTURE PLANNING ENGINEERING  
2215 Conowingo Rd, Suite 100  
Bel Air, Maryland 21015-1436  
410.803.0009  
fax 410.836.6611

**JAMES E. VAN ZANDT**  
VETERANS ADMINISTRATION  
MEDICAL CENTER

Drawing Title  
**STAIR 1 BUILDING SECTIONS**

Approved: Associate Director for Operations:

Approved: Director, Medical Center:

Project Title  
**EXPAND OUTPATIENT WITH SECOND FLOOR ADDITION**

Building No:

Location:

Date  
**10/ 30/ 15**

Project No.  
**503-308**

Drawing No.  
**AS403**

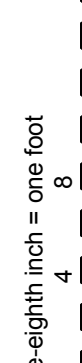
Dwg. 26 Of 112

**100% CONSTRUCTION BID DOCUMENT**  
**SUBMISSION - FULLY SPRINKLERED**

**DELLC JOB NO. 140701D**

DEPARTMENT OF VETERANS AFFAIRS

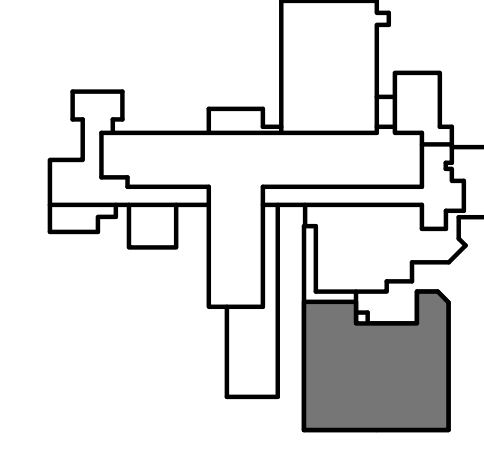




2 STAIR 2 TRANSVERSE SECTION  
AS404 3/8" = 1'-0"

8 STAIR STORFRONT JAMB - TYP.  
AS404 1 1/2" = 1'-0"

6 TYPICAL BOTTOM OF STAIR DETAIL  
AS404 1" = 1'-0"

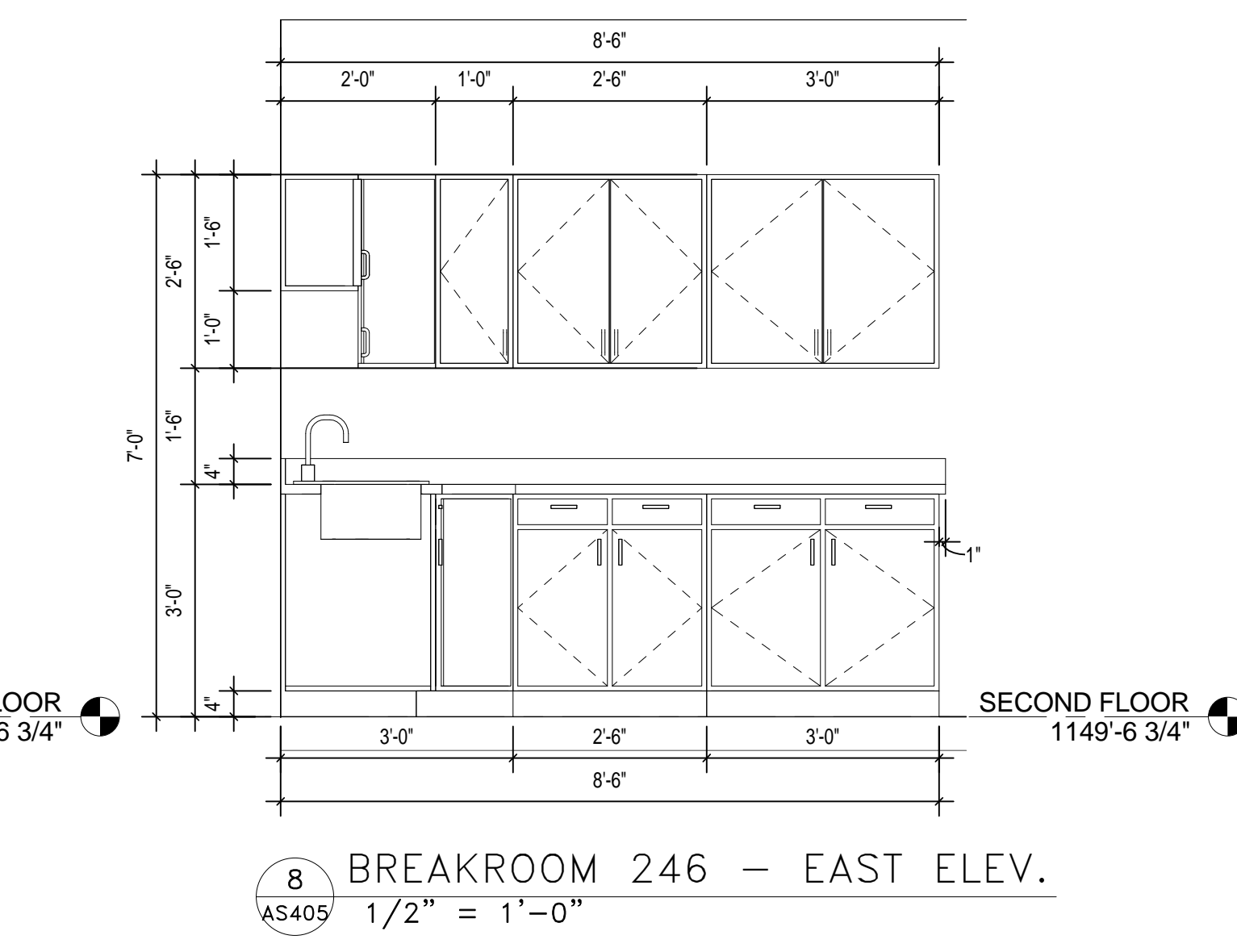
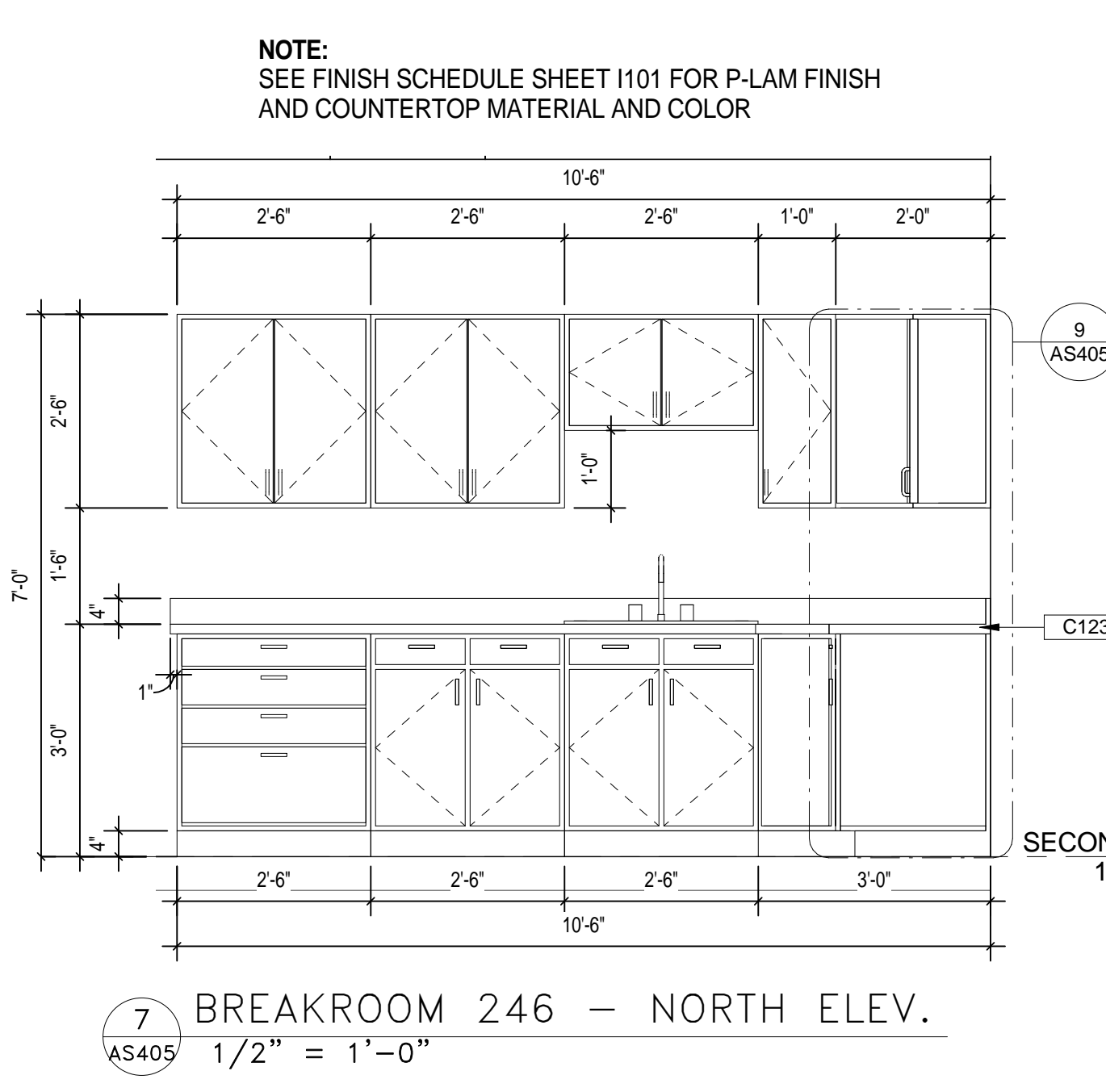
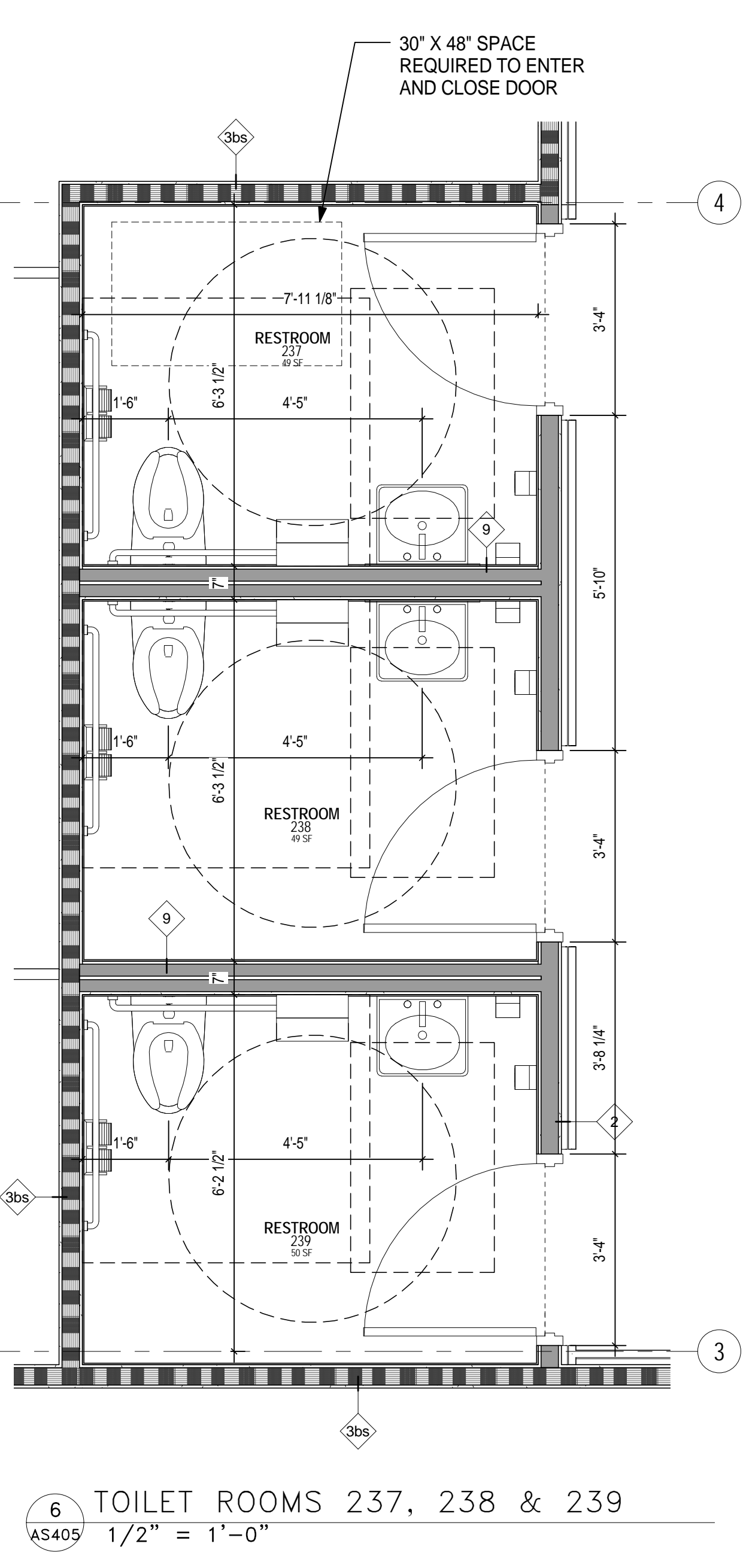
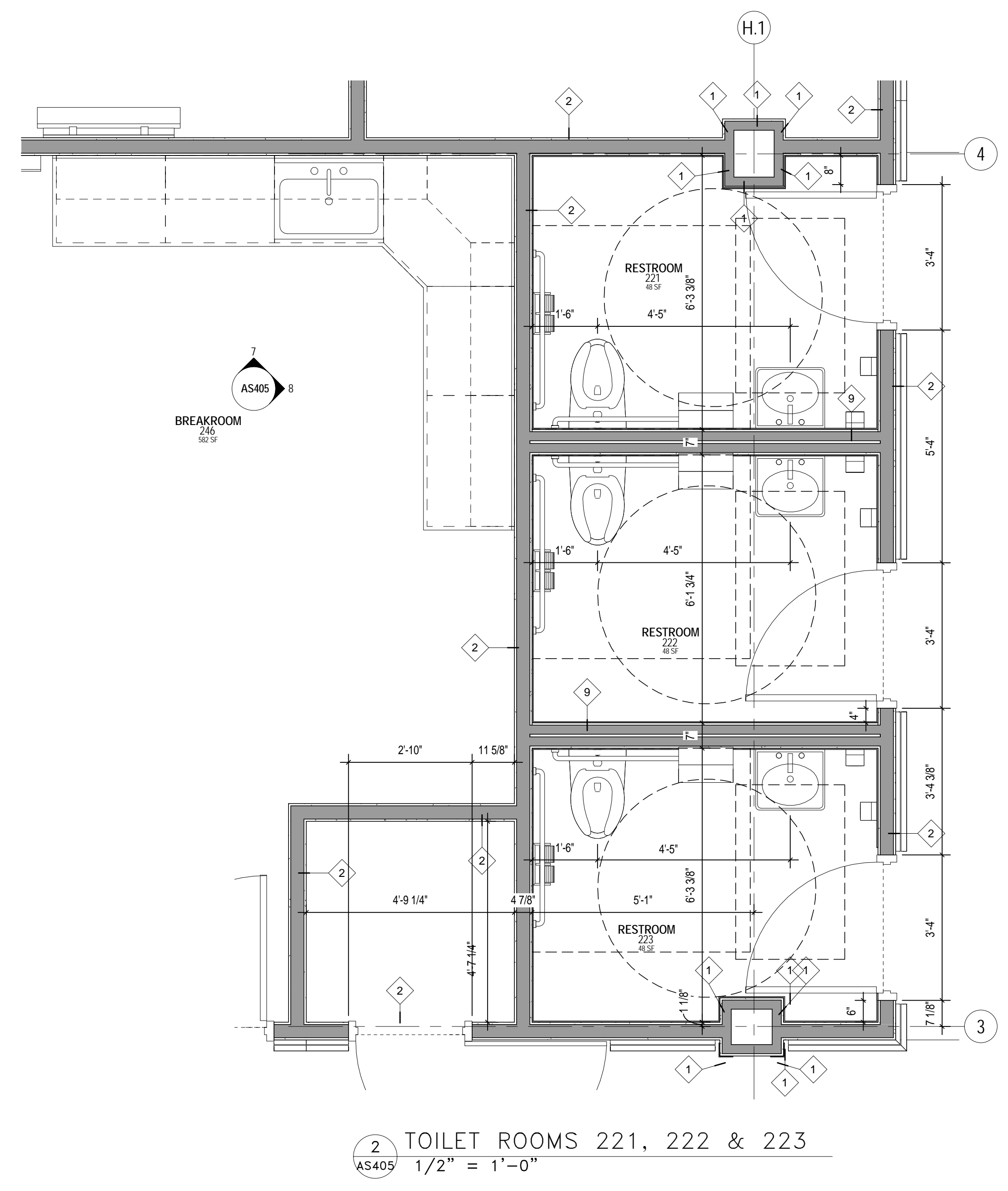
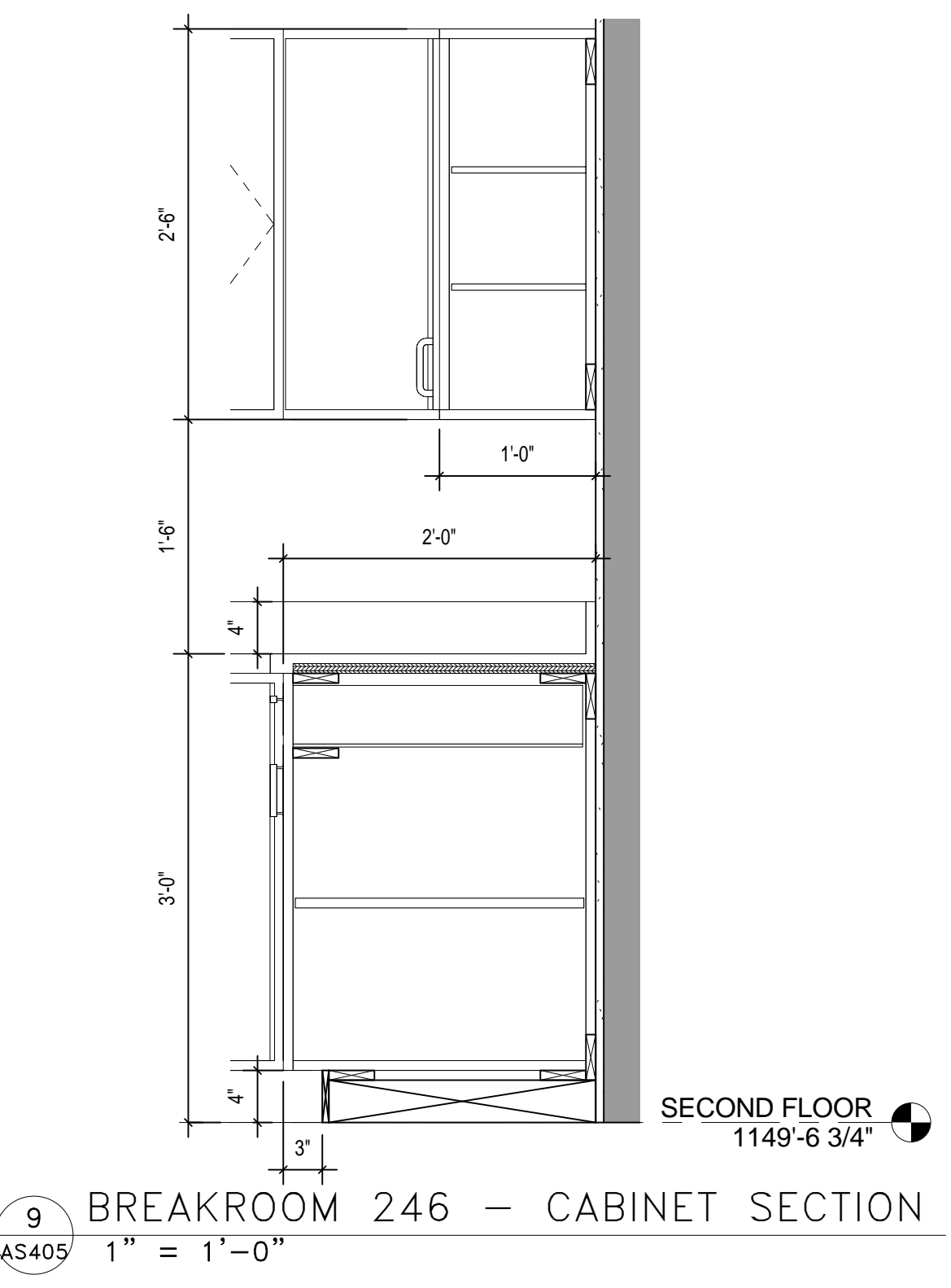
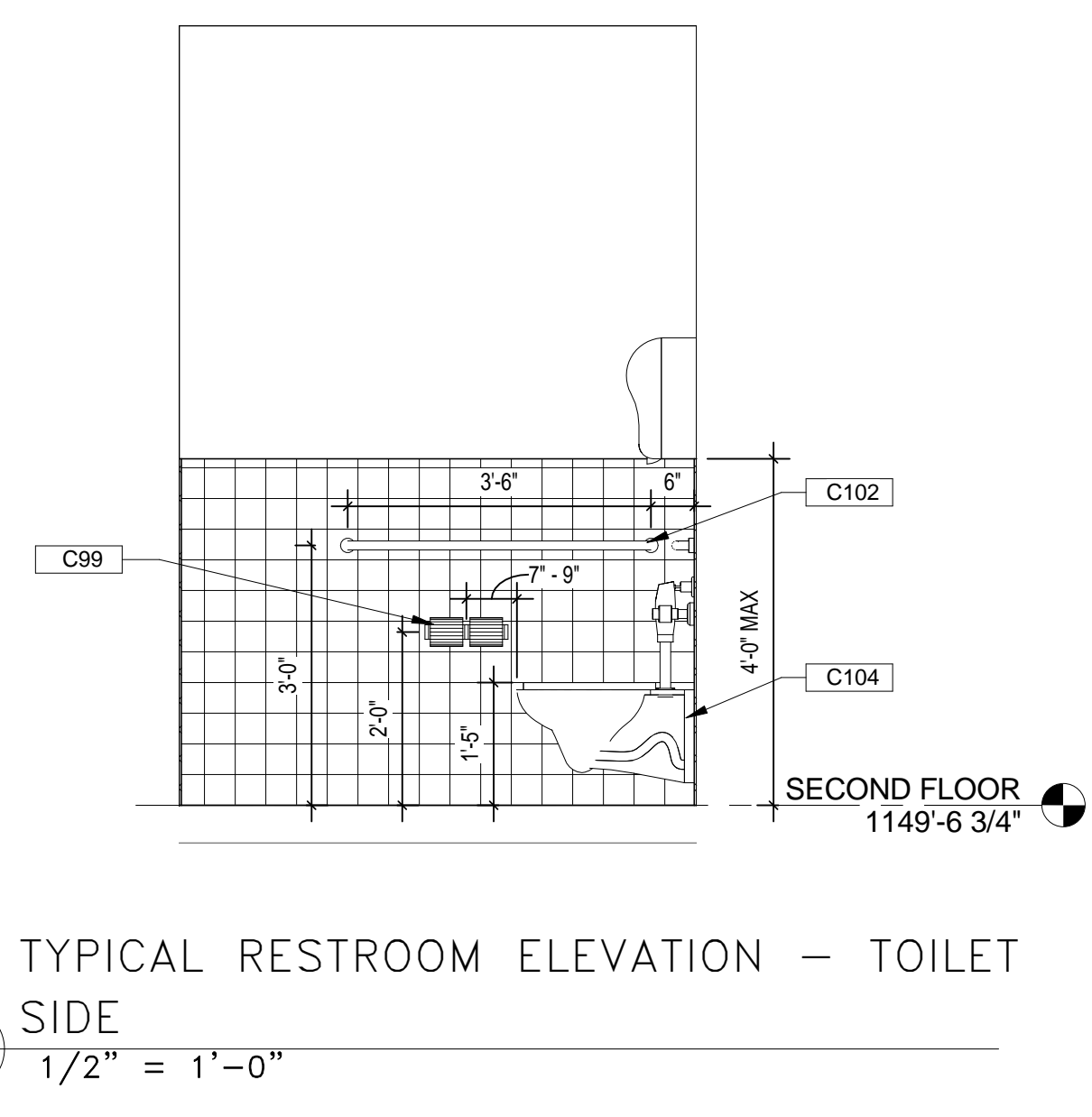
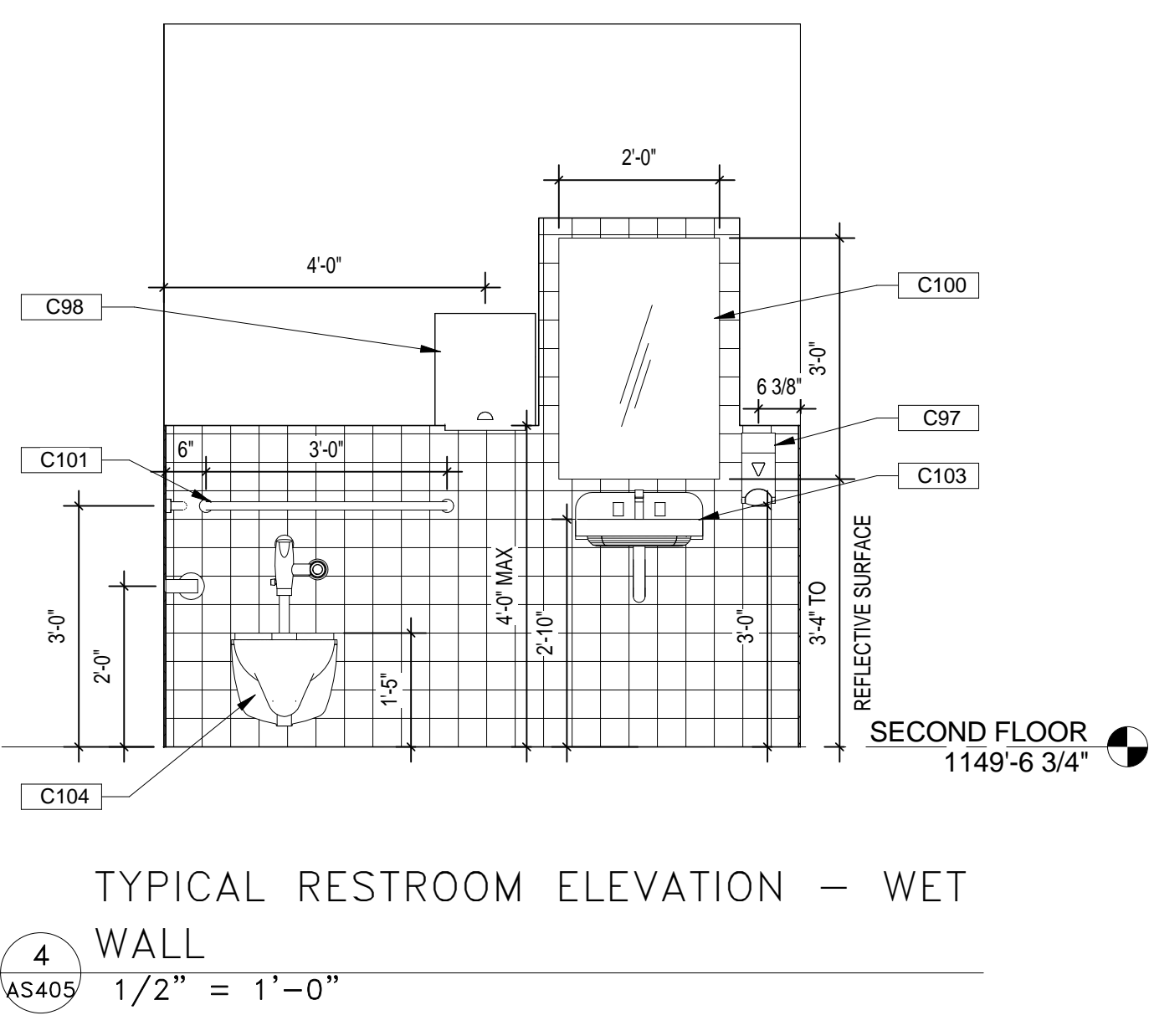
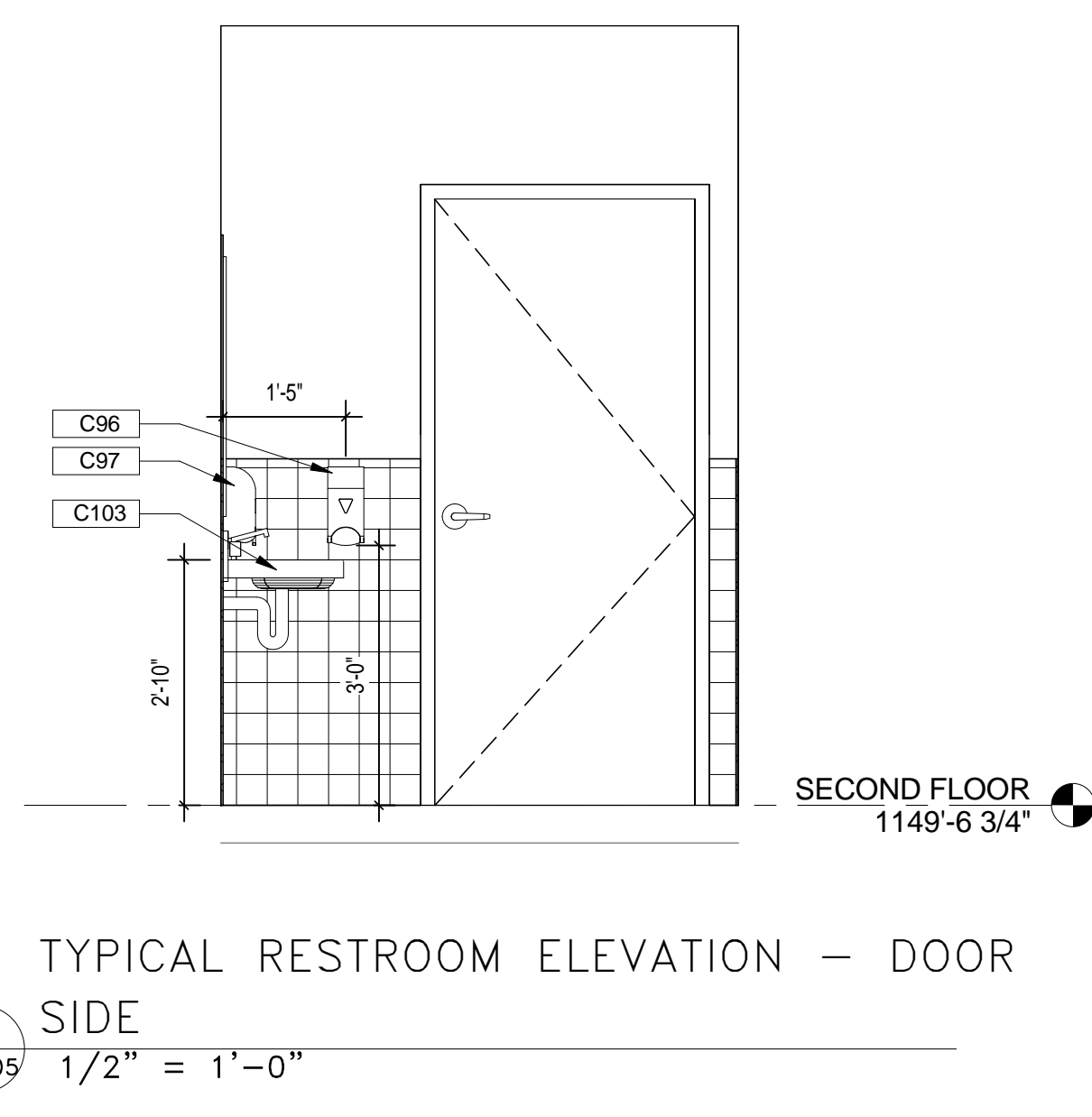
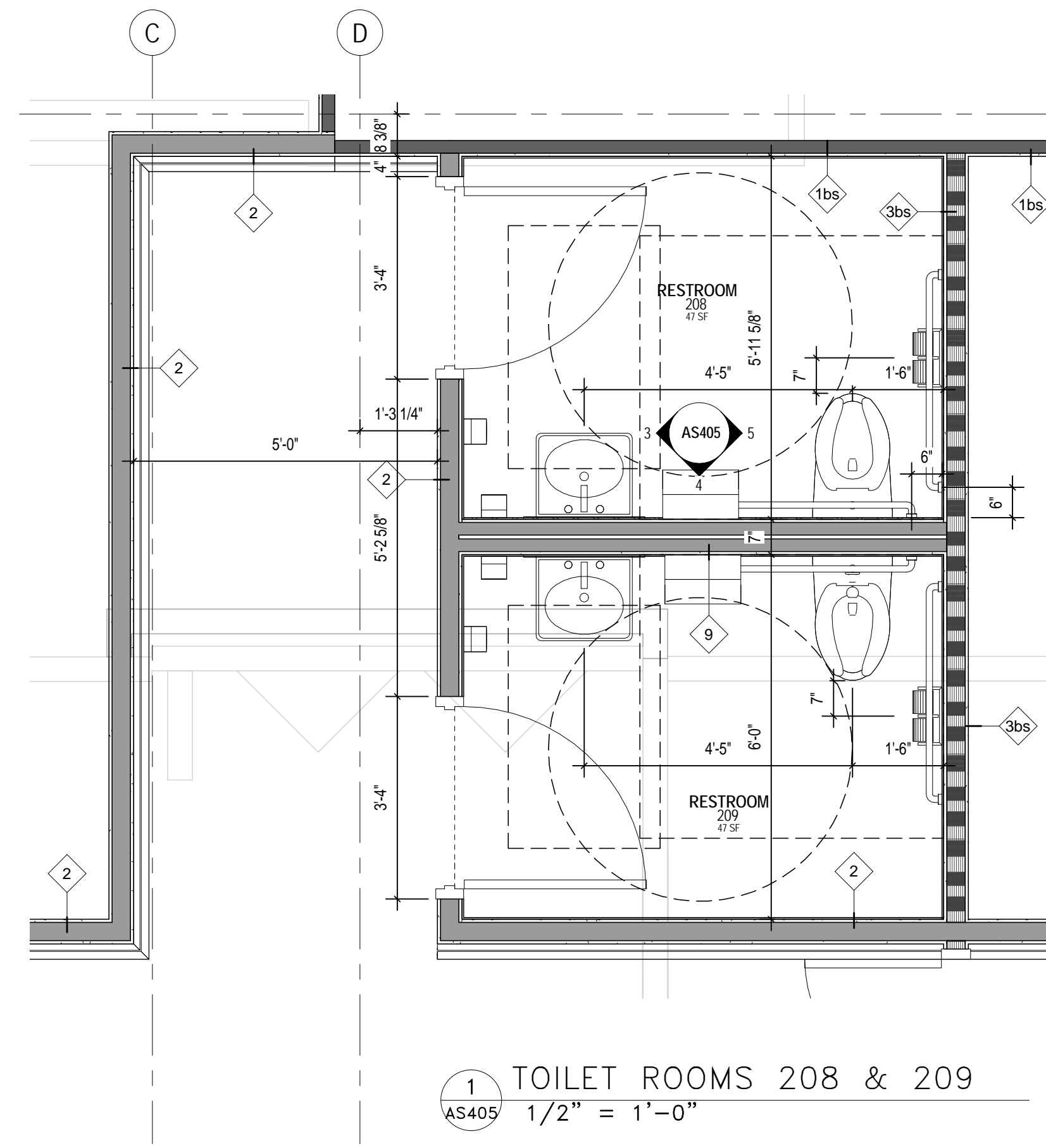


### KEY PLAN

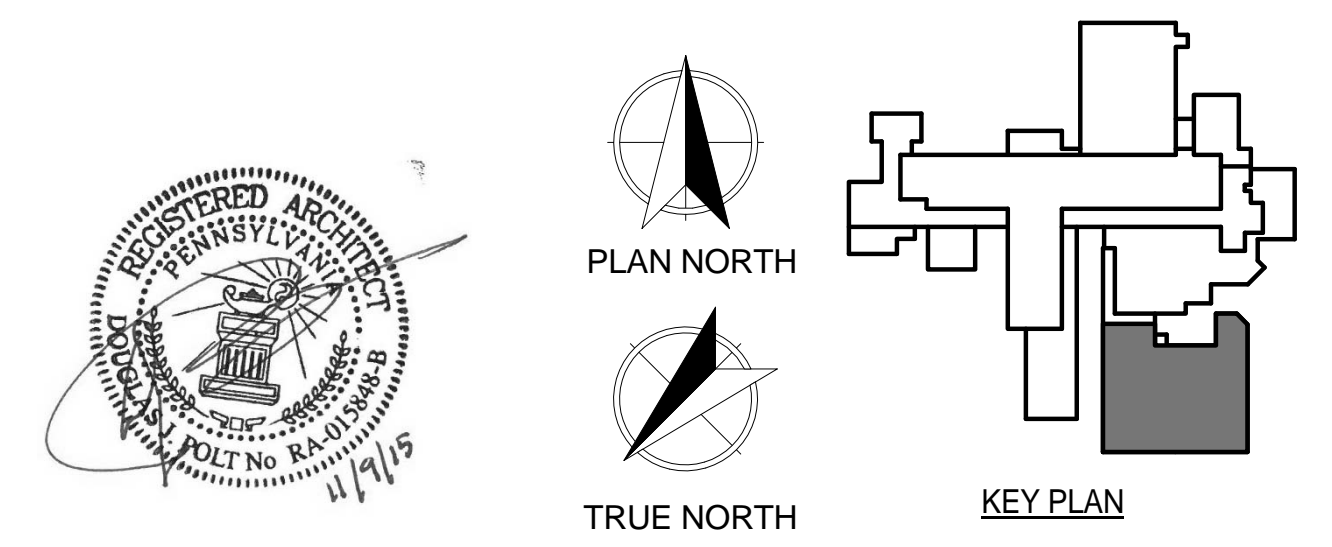


DEPARTMENT OF  
VETERANS AFFAIRS

three inches = one foot  
one and one half inch = one foot  
one inch = one foot  
three-quarters inch = one foot  
one-half inch = one foot  
three-eighths inch = one foot  
one-quarter inch = one foot  
one-eighth inch = one foot

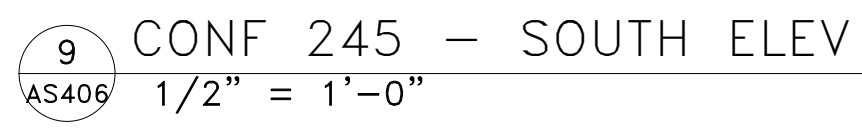
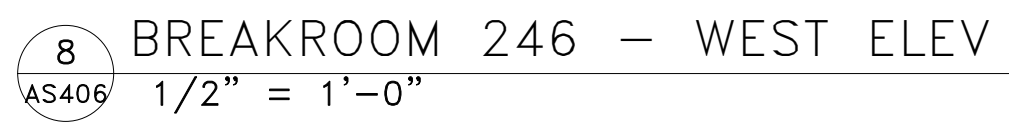


100% CONSTRUCTION BID DOCUMENT  
SUBMISSION - FULLY SPRINKLERED



<b>Additional:</b>		<b>Date:</b>	
<b>Revisions:</b>		<b>Project Title:</b>	
		<b>EXPAND OUTPATIENT WITH SECOND FLOOR ADDITION</b>	
		<b>Building No:</b>	
		<b>Checked:</b>	
		<b>Drawn:</b>	
		<b>CPJ/ CAJ</b>	
		<b>JSK/ BKP/ DEK</b>	
		<b>Location:</b>	
		<b>Approved: Associate Director for Operations:</b>	
		<b>Approved: Director, Medical Center:</b>	
		<b>Date:</b>	
		<b>10/ 30/ 15</b>	
		<b>Project No:</b>	
		<b>503-308</b>	
		<b>Drawing No:</b>	
		<b>AS405</b>	
		<b>Dwg. 28 Of 112</b>	

<b>Consultants:</b> <b>BURDETTE KOEHLER MURPHY &amp; ASSOCIATES, INC.</b> MECHANICAL / ELECTRICAL CONSULTING ENGINEERING 1416 CLARKVIEW ROAD BALTIMORE, MARYLAND 21209 410.323.0600 - FAX 410.317.2543 <b>RICKERT ENGINEERING, INC.</b> STRUCTURAL ENGINEERING 8913 WALTHAM WOODS ROAD, SUITE 500 BALTIMORE, MARYLAND 21234 410.663.5110 - FAX 410.663.5114	<b>BUILDING COST CONSULTANTS</b> COST ESTIMATING 12917 - 30TH AVENUE PLATTSMOUTH, NEBRASKA 68048 402.298.8260 - FAX 402.298.8290 <b>KOFFEL ASSOCIATES, INC.</b> FIRE PROTECTION ENGINEERING 8815 CENTRE PARK DR., SUITE 200 COLUMBIA, MARYLAND 21045 410.750.2246 - FAX 410.750.2588	<b>WHITMAN, REQUARDT &amp; ASSOCIATES, LLP</b> CIVIL ENGINEERING 891 South Caroline Street Baltimore, MD 21231 410.235.3450 - FAX: 410.243.5716 <b>ROBERT L. SEYMOUR ASSOCIATES</b> AUTOMATIC TRANSPORT ENGINEERING 182 THOMAS JOHNSON DR. SUITE 200 FREDERICK, MARYLAND 21702 301.662.8112 - FAX 301.662.8117	<b>DERBY de enterprises</b> ARCHITECTURE PLANNING ENGINEERING 2215 Conowingo Rd, Suite 100 Bel Air, Maryland 21015-1436 410.803.0009 fax 410.836.6811	<b>JAMES E. VAN ZANDT VETERANS ADMINISTRATION MEDICAL CENTER</b>	<b>Drawing Title</b> <b>ENLARGED PLANS &amp; RESTROOM ELEVATIONS</b> <b>Project Title</b> <b>EXPAND OUTPATIENT WITH SECOND FLOOR ADDITION</b> <b>Approved: Associate Director for Operations:</b> <b>Approved: Director, Medical Center:</b>	<b>Date</b> <b>10/ 30/ 15</b> <b>Project No.</b> <b>503-308</b> <b>Drawing No.</b> <b>AS405</b> <b>Dwg. 28 Of 112</b>	<b>DEPARTMENT OF VETERANS AFFAIRS</b>
---	---	---	--	--	---	---	---------------------------------------



**NOTE:**  
DEMOUNTABLE WALL MANUFACTURER TO SUBMIT  
SHOP DRAWINGS AND FABRIC SAMPLE FOR APPROVAL.



DELLC  
JOB No. 140701D

**Consultants:**

**BURDETTE KOEHLER MURPHY  
& ASSOCIATES, INC.**

MECHANICAL / ELECTRICAL CONSULTING  
ENGINEERING  
1416 CLARKVIEW ROAD  
BALTIMORE, MARYLAND 21209  
410.323.0600 • FAX 410.377.2543

**RICKERT ENGINEERING, INC.**

STRUCTURAL ENGINEERING  
8813 WALTHAM WOODS ROAD, SUITE 500  
BALTIMORE, MARYLAND 21234  
410.663.5110 • FAX 410.663.5114

**KOFFEL ASSOCIATES, INC.**  
FIRE PROTECTION ENGINEERING  
8815 CENTRE PARK DR., SUITE 200  
COLUMBIA, MARYLAND 21045  
410.750.2246 - FAX 410.750.2588

**ROBERT L. SEYMOUR ASSOCIATES**  
AUTOMATIC TRANSPORT ENGINEERING  
182 THOMAS JOHNSON DR. SUITE 200  
FREDERICK, MARYLAND 21702  
301.662.8112 - FAX 301.662.8117

ARCHITECTURE  
PLANNING  
ENGINEERING

**JAMES E. VAN ZANDT**  
**VETERANS ADMINISTRATION**  
**MEDICAL CENTER**

Drawing Title  
**INTERIOR ELEVATIONS**

Project Title	EXPAND OUTPATIENT WITH SECOND FLOOR ADDITION
---------------	--

Date  
10/ 30/ 15

Drawing No.

**AS406**

Dwg. 29 Of 112



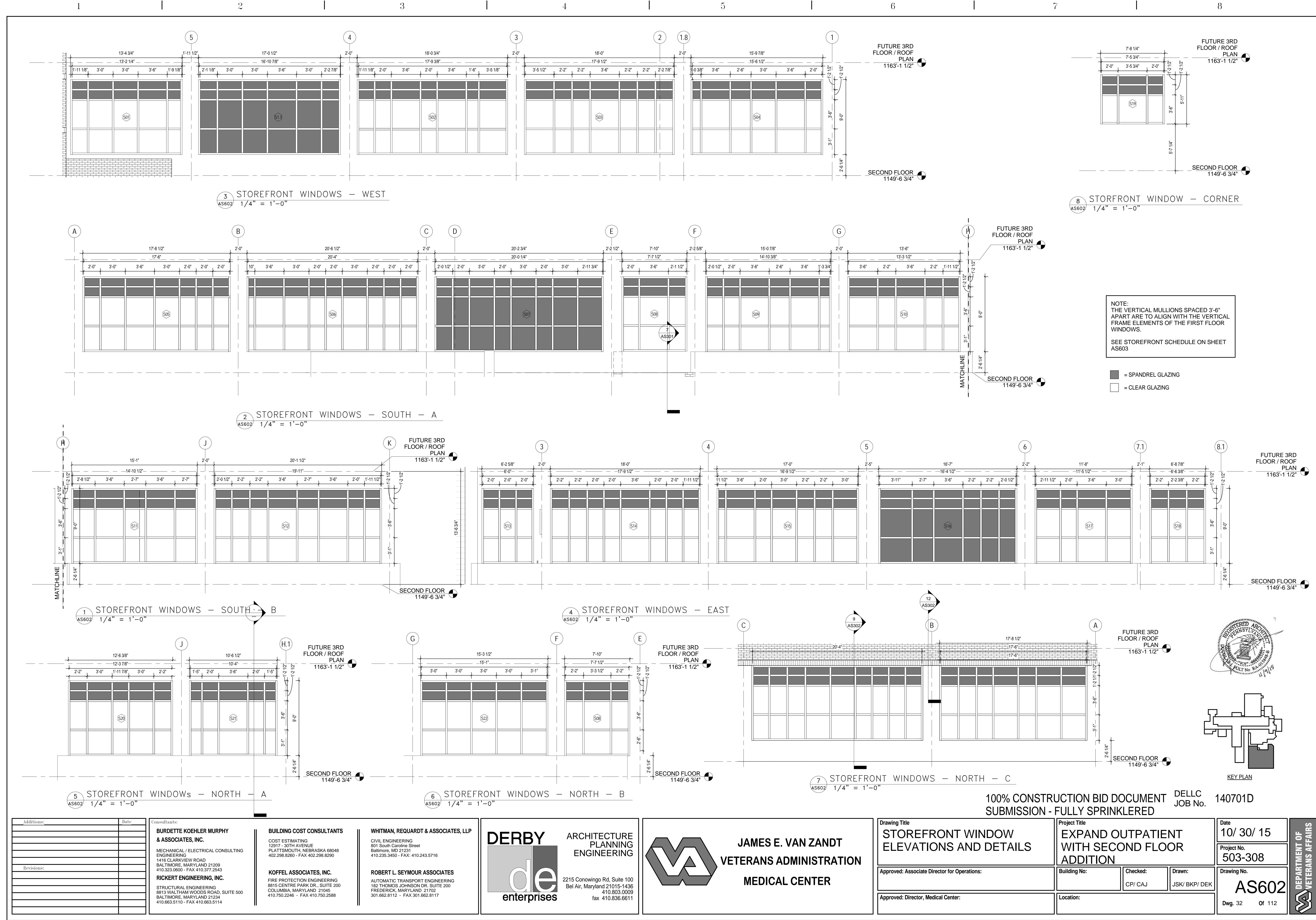








three eighths inch = one foot  
one eighth inch = one foot  
one quarter inch = one foot  
one half inch = one foot  
three quarters inch = one foot  
one inch = one foot  
one and one half inch = one foot  
two inches = one foot  
three inches = one foot



Additional:		Date:	
Revisions:		Date:	
Consultants:		Project Title:	
BURDETTE KOEHLER MURPHY & ASSOCIATES, INC. MECHANICAL / ELECTRICAL CONSULTING ENGINEERING 1416 CLARKVIEW ROAD BALTIMORE, MARYLAND 21209 410.323.0600 - FAX 410.377.2543 RICKERT ENGINEERING, INC. STRUCTURAL ENGINEERING 8913 WALTHAM WOODS ROAD, SUITE 500 BALTIMORE, MARYLAND 21234 410.663.5110 - FAX 410.663.5114		EXPAND OUTPATIENT WITH SECOND FLOOR ADDITION	
BUILDING COST CONSULTANTS COST ESTIMATING 12917 - 30TH AVENUE PLATTSMOUTH, NEBRASKA 68048 402.298.8260 - FAX 402.298.8290 KOFFEL ASSOCIATES, INC. FIRE PROTECTION ENGINEERING 8815 CENTRE PARK DR., SUITE 200 COLUMBIA, MARYLAND 21045 410.750.2246 - FAX 410.750.2588		Building No:	
WHITMAN, REQUARDT & ASSOCIATES, LLP CIVIL ENGINEERING 891 South Caroline Street Baltimore, MD 21231 410.235.3450 - FAX: 410.243.5716 ROBERT L. SEYMOUR ASSOCIATES AUTOMATIC TRANSPORT ENGINEERING 182 THOMAS JOHNSON DR. SUITE 200 FREDERICK, MARYLAND 21702 301.662.8112 - FAX 301.662.8117		Checked: CPI/CAJ	
DERBY de enterprises ARCHITECTURE PLANNING ENGINEERING 2215 Conowingo Rd, Suite 100 Bel Air, Maryland 21015-1436 410.803.0009 fax 410.836.6811		Drawn: JSK/ BKP/ DEK	
JAMES E. VAN ZANDT VETERANS ADMINISTRATION MEDICAL CENTER		Approved: Associate Director for Operations:	
100% CONSTRUCTION BID DOCUMENT SUBMISSION - FULLY SPRINKLERED		Approved: Director, Medical Center:	
DELLC JOB No. 140701D		Location:	
Drawing No. AS602		Date 10/ 30/ 15	
Dwg. 32 Of 112		Project No. 503-308	
DEPARTMENT OF VETERANS AFFAIRS		Drawing No. AS602	