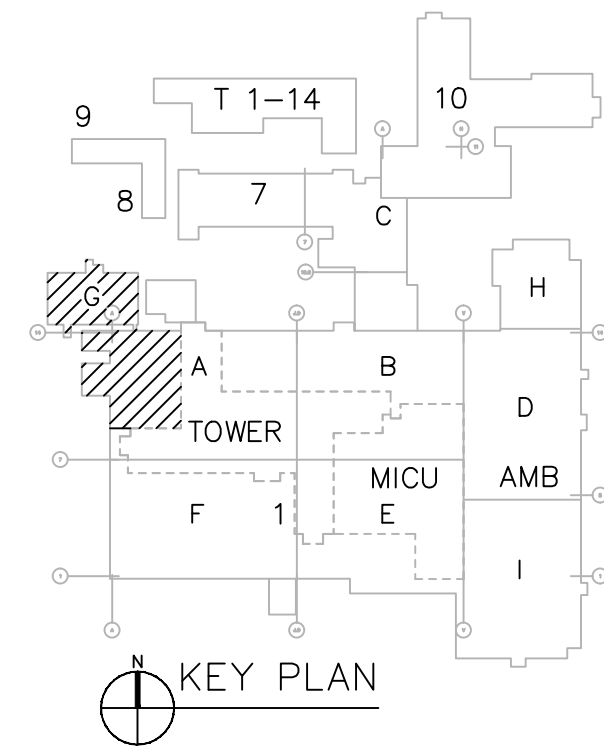
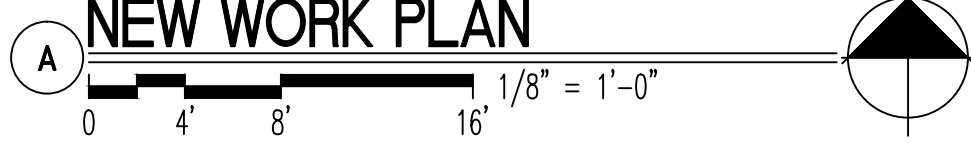


- # KEYNOTES
1. ADD ALTERNATE #1: PERFORM X-RAY AND OTHER NON DESTRUCTIVE TESTING ON THE FEEDWATER DEHEATER PRESSURE VESSEL WELD UNDER THE INFLUENCE OF THE BOILER WATER CHEMISTRY REQUIREMENTS ARE BASED ON RECOMMENDATIONS OF NACE (CORROSION ENGINEERING SOCIETY). SEE SPECIFICATIONS FOR ADDITIONAL INFORMATION.
 2. ADD ALTERNATE #2: STABILIZE BOILER ACCESS PLATFORM, SUPPORT FROM FLOOR, COORDINATE WITH MOUNTED SUPPORTS WITH EXISTING PIPING AND BOILER APPURTENANCES.
 3. ADD ALTERNATE #3: REPLACE (E) 6" STEAM PRESSURE GAGES ON THE TOPS OF EACH BOILER WITH (N) 8" GAGES PER SPECIFICATIONS (TYPICAL). REPLACE ALL GAGES WITH (N) 8" GAGES PER SPECIFICATIONS WITH V.A. APPROVED GAGES. SEE SPECIFICATIONS FOR ADDITIONAL INFORMATION.
 4. ADD ALTERNATE #4: INSTALL 1 1/4" CHILLED WATER SUPPLY AND RETURN PIPING TO THE TANK.
 5. ADD ALTERNATE #4: INSTALL NEW 3/4" CONDENSATE DRAIN FROM FAN COIL UNIT, ROUTE TO NEAREST FLOOR DRAIN.
 6. ADD ALTERNATE #3: PROVIDE A REDUNDANT SET OF TOUCH SCREEN CONTROL PANELS (TCELL AS A NEW OPERATOR'S WORKSTATION) COMPUTER AND SCADA SYSTEM. SEE SPECIFICATION FOR ADDITIONAL INFORMATION.
 7. ADD ALTERNATE #4: NEW 2" CHWS PIPING AND VALVE, TAP INTO EXISTING 24" HEADER, COORDINATE WITH PLANT PERSONNEL.
 8. ADD ALTERNATE #4: NEW 2" CHWR PIPING AND VALVE, TAP INTO EXISTING 24" HEADER, COORDINATE WITH PLANT PERSONNEL.
 9. ADD ALTERNATE #2: PROVIDE BLOWOFF RECEIVER TANK AND GLOBE VALVE, MANUAL BYPASS AROUND COOLING WATER CONTROL VALVE AT BLOWOFF SEPARATOR. SEE P&ID FOR ADDITIONAL INFORMATION.
 10. ADD ALTERNATE #2: PROVIDE BLOWOFF RECEIVER TANK RECIRCULATION LOOP INCLUDING INLINE PUMP (A-P1) SHELL AND TUBE HEX CHANGER (A-HX1), THERMOSTATIC CONTROL VALVE AND ASSOCIATED PIPING AND APPURTENANCES. CONNECT HEX EXCHANGER TO 30PSI MPWS. SEE P&ID DRAWING FOR ADDITIONAL INFORMATION. SEE ELECTRICAL DRAWINGS AND SCHEDULES FOR PUMP DETAILS.



ADD ALTERNATES
AREA A/G - MECHANICAL
NEW WORK PLAN

[illegible]