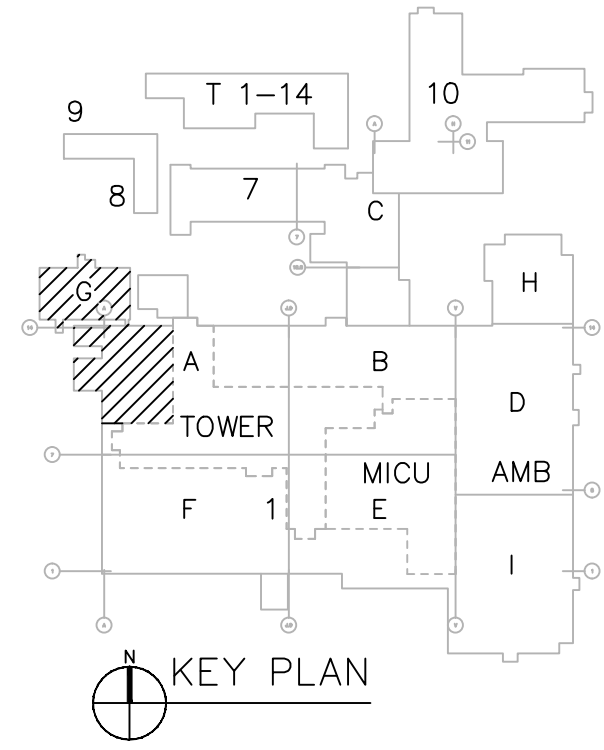
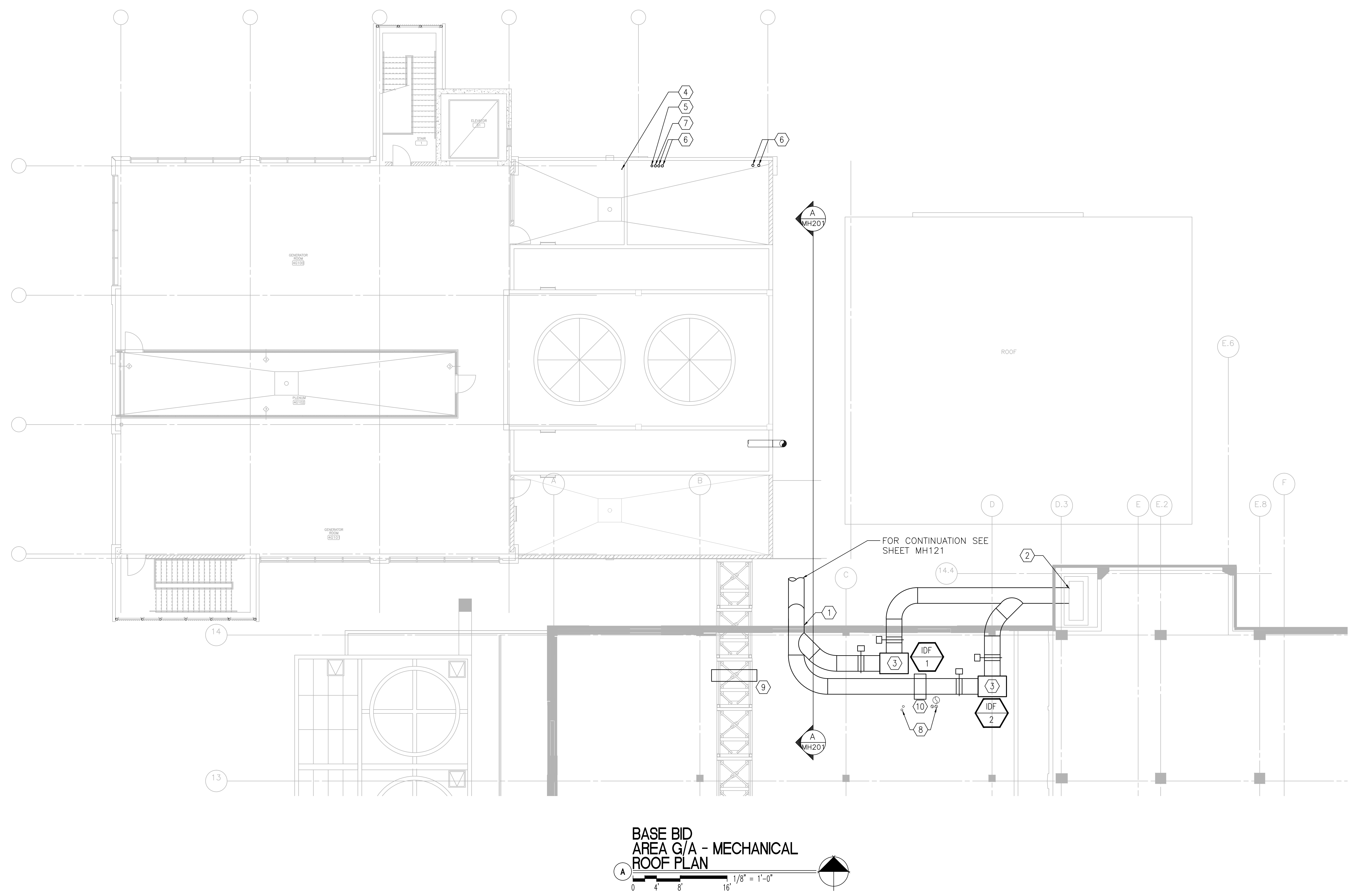


three inches = one foot  
one and one half inches = one foot  
one inch = one foot  
three quarters inch = one foot  
one half inch = one foot  
three eighths inch = one foot  
one quarter inch = one foot  
one eighth inch = one foot

- KEYNOTES**
1. INSTALL (N) 32" ID COMBINED BOILER FLUE AS SHOWN.
  2. PROVIDE NEW FLUE PENETRATION INTO EXISTING MASONRY CHIMNEY.
  3. INSTALL (N) HIGH TEMPERATURE EXHAUST FAN (TYPICAL 2). INSTALL AUTOMATIC DAMPERS UPSTREAM AND DOWNSTREAM OF EACH FAN.
  4. 1" DEAERATOR VENT THROUGH ROOF. TERMINATE PIPING 6" ABOVE ROOF.
  - 4" DEAERATOR STEAM PRESSURE REDUCING STATION SAFETY RELIEF VALVE VENT THROUGH ROOF. TERMINATE PIPING 6" ABOVE ROOF.
  6. BOILER RELIEF VENTS THROUGH ROOF (TYPICAL 4). TERMINATE PIPING 6" ABOVE ROOF.
  7. 4" DEAERATOR RELIEF VENT THROUGH ROOF. TERMINATE PIPING 6" ABOVE ROOF.
  8. EXISTING ROOF PENETRATIONS TO REMAIN.
  9. FABRICATE A STEEL BRIDGE WITH PLATFORM AND HANDRAILS TO NAVIGATE EXISTING CABLE TRAY.
  10. FABRICATE A STEEL BRIDGE WITH PLATFORM AND HANDRAILS TO NAVIGATE NEW DUCTWORK.



DESIGN DEVELOPMENT - NOT FOR CONSTRUCTION

<b>CONSULTANTS:</b>		<b>ARCHITECT/ENGINEERS:</b> <b>GLHN</b> ARCHITECTS & ENGINEERS, INC. 2939 E. Broadway Blvd. Tucson, Arizona 85716 PH: 520-881-4546 FAX: 520-795-1822 glhn.com <small>COPYRIGHT 2010 GLHN ARCHITECTS &amp; ENGINEERS, INC. ALL RIGHTS RESERVED.</small>		<b>Drawing Title</b> BASE BID: ROOF AREA A/G MECHANICAL NEW WORK PLAN		<b>Project Title</b> MIAMI UTILITY PLANT CORRECTIONS		<b>Project Number</b> 0555.118		<b>Office of Construction and Facilities Management</b>  <b>Department of Veterans Affairs</b>	
				<b>Approved Project Director</b>		<b>Location</b> MIAMI UTILITY PLANT		<b>Building Number</b> G/A			
<b>Revisions:</b>						<b>Date</b> 08-05-11		<b>Checked</b> HWJ			
<b>Date</b>								<b>Drawing Number</b> MH141		<b>Dwg. -- of --</b>	