

ASBESTOS ABATEMENT NOTES

- THIS DRAWING IS DIAGRAMMATIC. IT IS FOR GENERAL MATERIAL AND SAMPLE LOCATION INFORMATION. CONTRACTOR SHALL VERIFY ALL MATERIAL LOCATIONS AND QUANTITIES TO BE REMOVED.
- EFFECTED AREAS OF THE BUILDING WERE SURVEYED FOR SUSPECT HAZARDOUS MATERIALS. ASBESTOS-CONTAINING OR OTHER HAZARDOUS MATERIALS MAY BE PRESENT IN OTHER PORTIONS OF THE BUILDING. REFER TO THE PRE-RENOVATION HAZARDOUS BUILDING MATERIALS SURVEY REPORT, PBS ENGINEERING + ENVIRONMENTAL JULY 2010 FOR ADDITIONAL INFORMATION.
- IF ADDITIONAL SUSPECT ASBESTOS-CONTAINING MATERIALS ARE ENCOUNTERED DURING CONSTRUCTION OR DEMOLITION ACTIVITIES, STOP WORK AND CONTACT THE CONTRACTING OFFICER.
- THE QUANTITY AND LOCATION OF ASBESTOS-CONTAINING HARD FITTINGS SHOWN ON THIS DRAWING ARE ESTIMATES BASED ON THE FITTINGS OBSERVED. IT IS LIKELY THAT ADDITIONAL FITTINGS TO BE REMOVED ARE PRESENT IN INACCESSIBLE LOCATIONS.
- ADDITIONAL ASBESTOS-CONTAINING HARD FITTINGS MAY BE PRESENT ON ASSOCIATED PIPING OUTSIDE THE WORK AREA INCLUDING IN THE ATTIC AND SERVICE TUNNELS. REMOVE ASBESTOS-CONTAINING HARD FITTINGS AS NECESSARY TO ACCOMMODATE MECHANICAL AND PLUMBING WORK.
- THE CONTRACTOR SHALL WORK CLOSELY WITH THE CONTRACTING OFFICER, THEIR FIELD REPRESENTATIVE, OR THE VPIH TO COORDINATE REMOVAL OF ASBESTOS-CONTAINING MATERIALS AND CONTAMINATED BUILDING COMPONENTS.
- REMOVE ALL ASBESTOS-CONTAINING MATERIALS IN ACCORDANCE WITH SPECIFICATION SECTION 02 28 11.

LEGEND

- ① APPROXIMATE NUMBER AND LOCATION OF ASBESTOS-CONTAINING HARD FITTINGS ON FIBERGLASS PIPE INSULATION TO BE REMOVED
- ⊗ CHILLER PIPING WITH ASBESTOS-CONTAINING MUDDED PACKING MATERIAL TO BE REMOVED
- Ⓟ PHOTO NUMBER, LOCATION AND DIRECTION.
- ▨ ASBESTOS-CONTAINING VINYL FLOOR TILE AND ASSOCIATED MASTIC TO BE REMOVED
- ▨ ASBESTOS-CONTAINING ROOF PATCH MATERIAL IS PRESENT ON THE GARAGE PARAPET WALL TO BE REMOVED

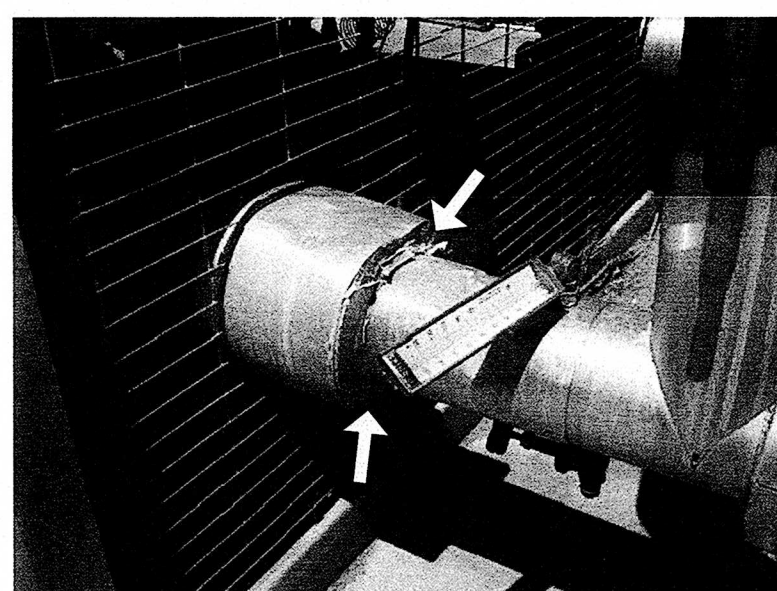


PHOTO 1 - ASBESTOS-CONTAINING MUDDED JOINT PACKING LOCATED ON CHILLER PIPING ENDS TO BE REMOVED

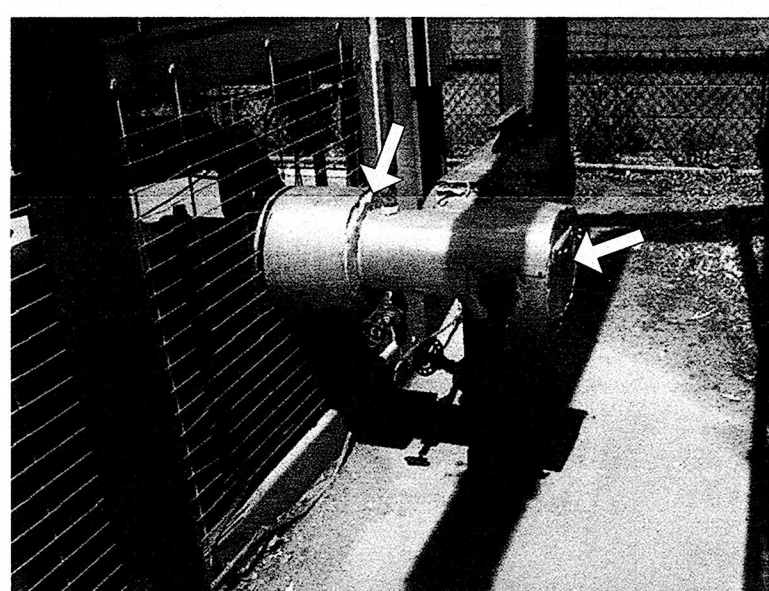


PHOTO 2 - ASBESTOS-CONTAINING MUDDED JOINT PACKING LOCATED ON CHILLER PIPING ENDS TO BE REMOVED

GARAGE PLAN

