



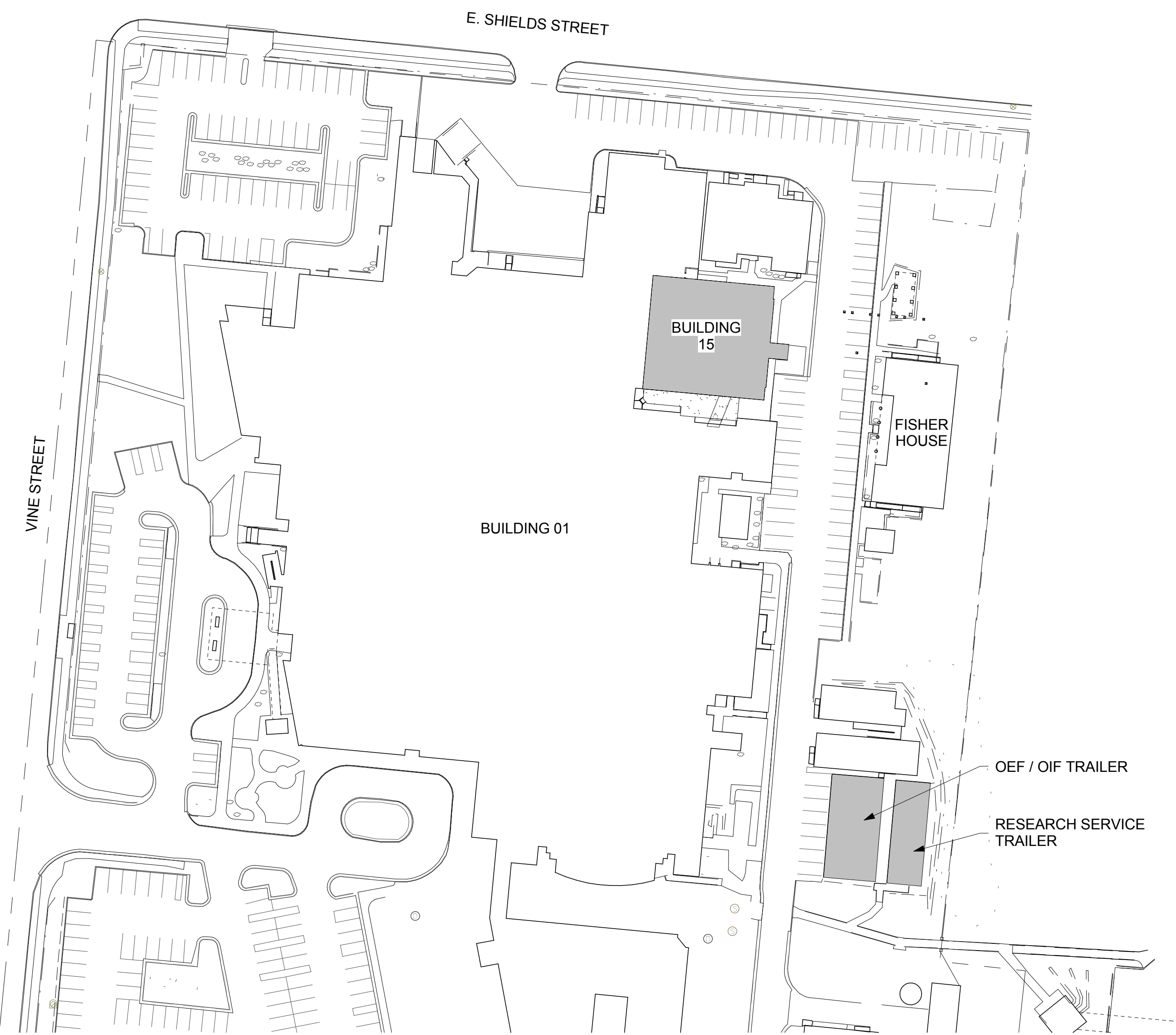
CORRECT STRUCTURAL ISSUES ON TRAILERS

Department of Veterans Affairs Medical Center
3200 Vine St.
Cincinnati, OH 45220

PROJECT #: 539-17-203

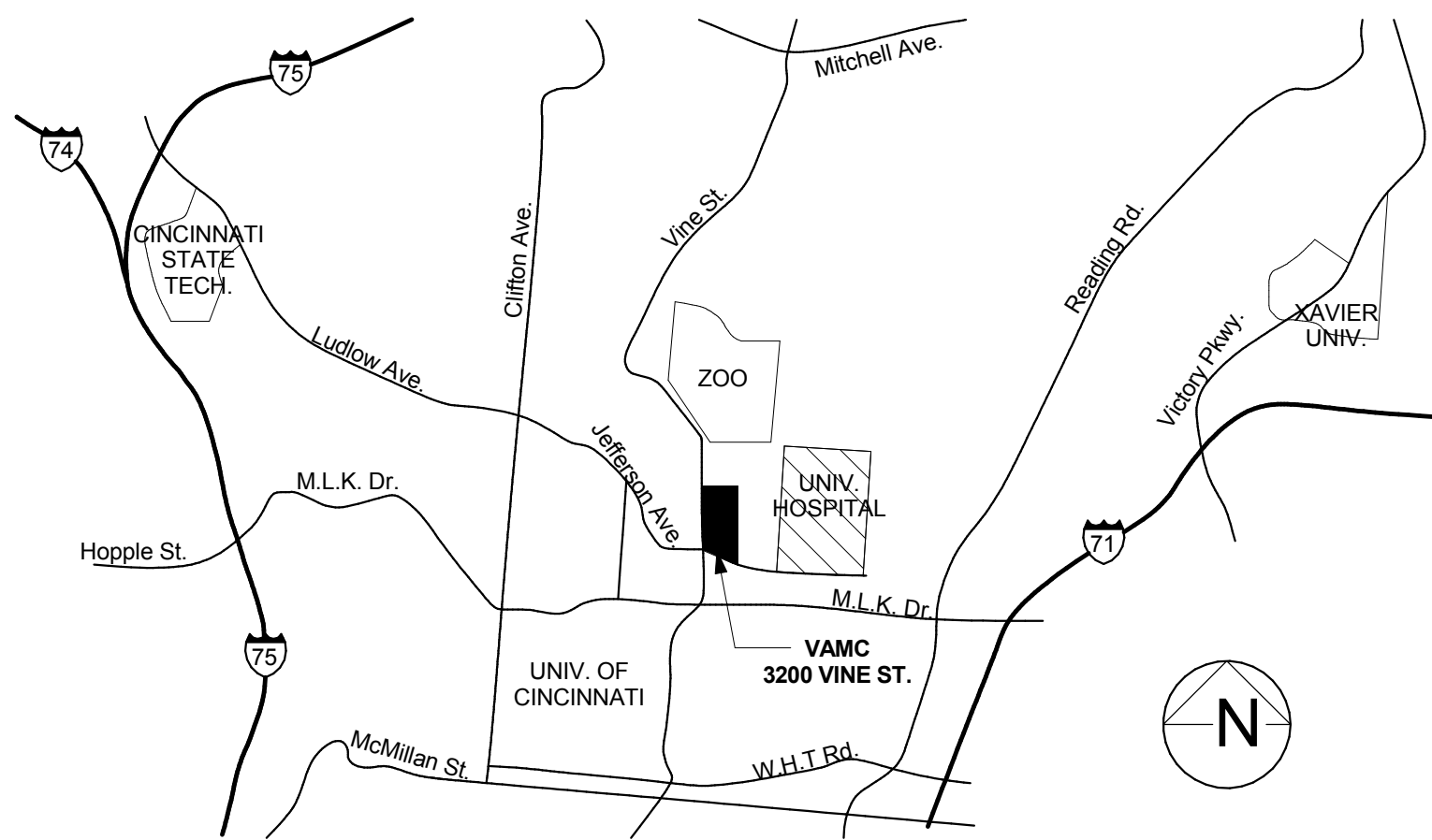
JOHN POE ARCHITECTS
ARCHITECTURE PLANNING INTERIOR DESIGN
116 EAST THIRD STREET
DAYTON, OHIO 45402
937.461.3290 P
937.461.0260 F

THP LIMITED INC.
STRUCTURAL ENGINEER
100 E. EIGHTH STREET
CINCINNATI, OH 45202
513.241.3222 P
513.241.2981 F



OVERALL SITE PLAN
Scale: N.T.S.

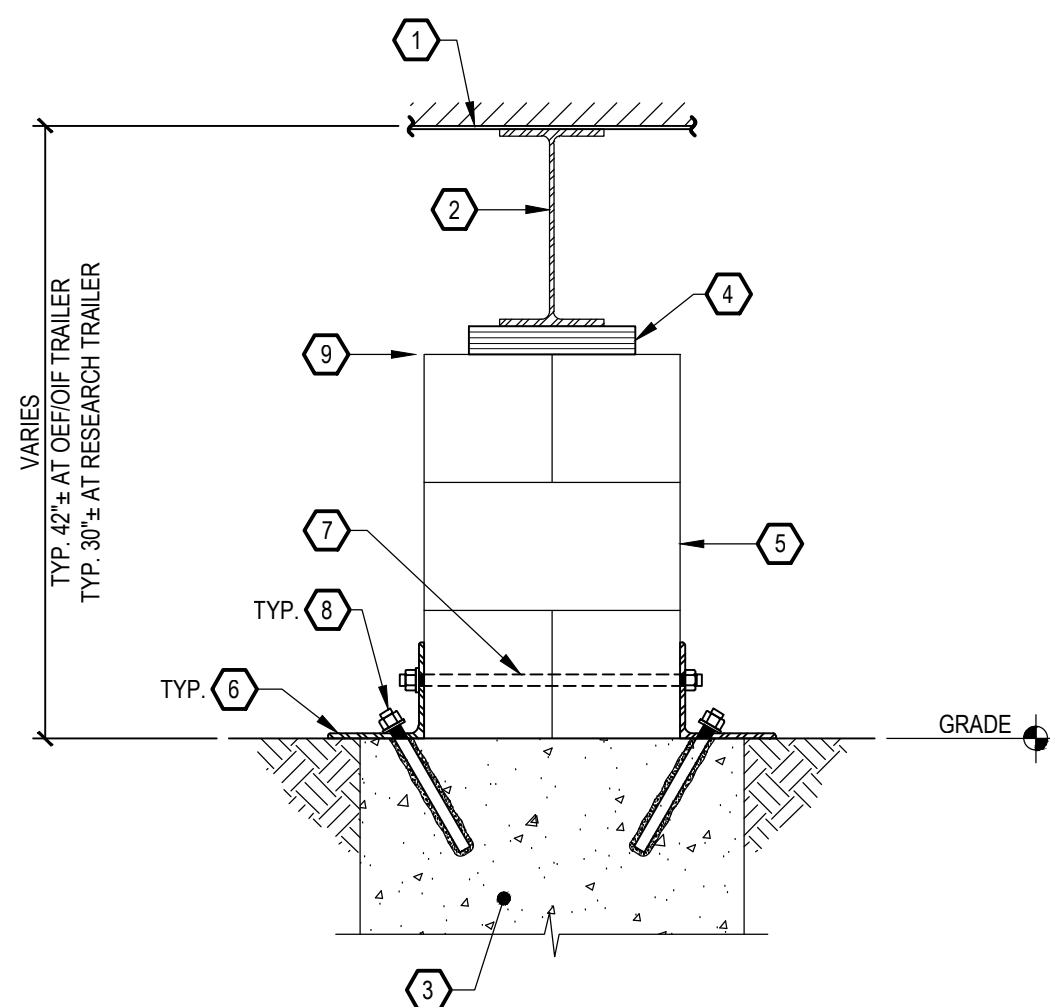
VICINITY MAP



DRAWING INDEX

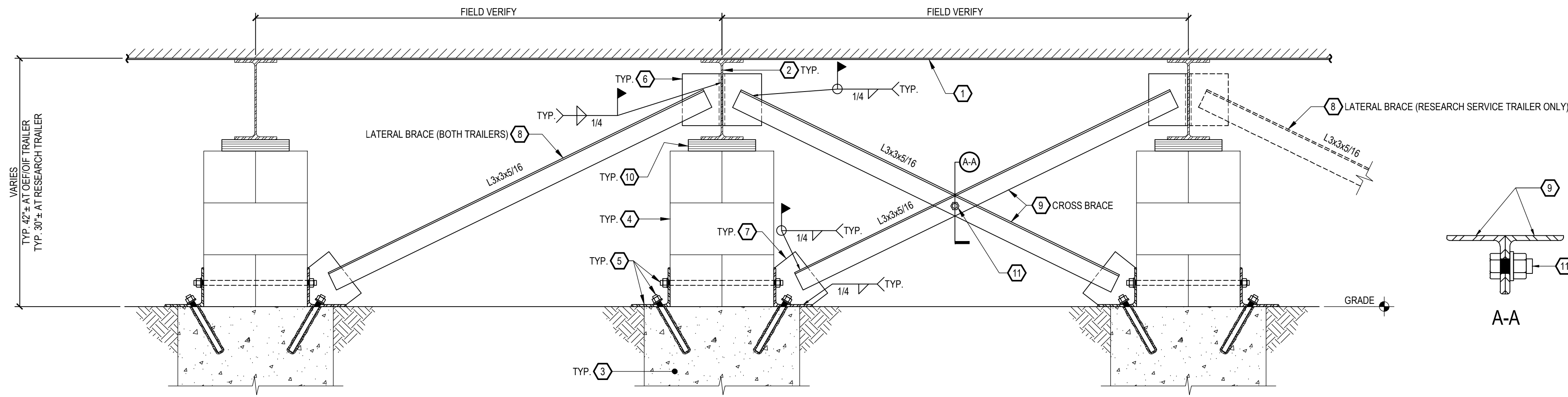
G001	COVER SHEET
S100	RESEARCH SERVICE TRAILER SUPPORT UPGRADES
S101	OEF / OIF TRAILER SUPPORT UPGRADES
S200	OFFICE TRAILER SUPPORT UPGRADES
S300	BUILDING 15 MECHANICAL CLEANING AND COATING

Revisions	Date	CONSULTANTS:		ARCHITECT/ENGINEERS: JOHN POE ARCHITECTS 116 EAST THIRD STREET DAYTON, OHIO 45402-2130 937.461.3290 PHONE 937.461.0260 FAX jpa@johnpoe.com	Drawing Title COVER SHEET	Project Title CORRECT STRUCTURAL ISSUES ON TRAILERS	Project No. VA Project No. 539-17-203 JPA Project No. 15001.00	Office of Construction and Facilities Management Department of Veterans Affairs
					Approved: Project Director	Location Cincinnati, Ohio	Building Number 15	
					Date 5/27/2015	Checked KR	Drawn VR	



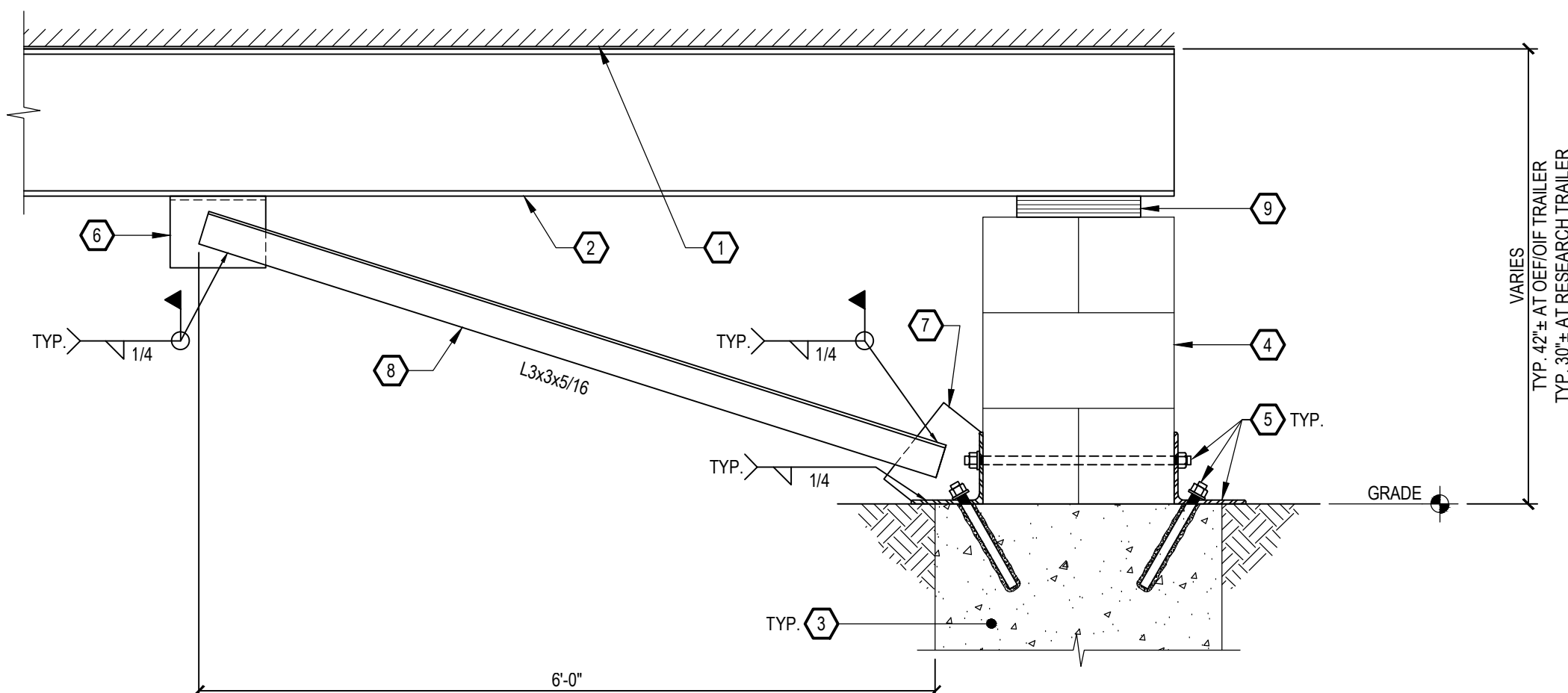
- 1 EXISTING TRAILER ABOVE. DO NOT DAMAGE.
- 2 EXISTING STEEL BEAM. PRIOR TO PERFORMING ANY WORK, TEMPORARILY SHORE BEAM EACH SIDE OF BLOCK FOOTING.
- 3 EXISTING CONCRETE FOOTING.
- 4 EXISTING WOOD SHIMS. TEMPORARILY SUPPORT BEAM. REMOVE WOOD SHIMS AND REPLACE WITH STEEL SHIM STACK. AFTER SHIMS ARE PLACED, TACK WELD TO SECURE. REFER TO SPECIFICATION SECTION 05 12 00.
- 5 CEMENT MASONRY UNIT BLOCKING. AFTER TEMPORARY SHORING IS INSTALLED, ADJUST BLOCKS AS NECESSARY AND FILL OPEN CELLS WITH MASONRY GROUT.
- 6 5/16\"/>

1
S200
BLOCKING MODIFICATIONS
DETAIL
1\"/>



- 1 EXISTING TRAILER ABOVE. DO NOT DAMAGE.
- 2 EXISTING STEEL BEAM. PRIOR TO PERFORMING ANY WORK, TEMPORARILY SHORE BEAM EACH SIDE OF BLOCK FOOTING.
- 3 EXISTING CONCRETE FOOTING.
- 4 CEMENT MASONRY UNIT BLOCKING. REFER TO NOTE 5 ON DETAIL 1/S200 FOR REPAIRS.
- 5 BLOCKING ANCHOR ASSEMBLY. REFER TO NOTES 6, 7 & 8 ON DETAIL 1/S200 FOR ADDITIONAL INFORMATION.
- 6 5/16\"/>

2
S200
SUPPLEMENTAL BRACING (EAST/WEST DIRECTION)
DETAIL
1\"/>



- 1 EXISTING TRAILER ABOVE. DO NOT DAMAGE.
- 2 EXISTING STEEL BEAM. PRIOR TO PERFORMING ANY WORK, TEMPORARILY SHORE BEAM EACH SIDE OF BLOCK FOOTING.
- 3 EXISTING CONCRETE FOOTING.
- 4 CEMENT MASONRY UNIT BLOCKING. REFER TO NOTE 5 ON DETAIL 1/S200 FOR REPAIRS.
- 5 BLOCKING ANCHOR ASSEMBLY. REFER TO NOTES 6, 7 & 8 ON DETAIL 1/S200 FOR ADDITIONAL INFORMATION.
- 6 5/16\"/>

3
S200
SUPPLEMENTAL BRACING (NORTH/SOUTH DIRECTION)
DETAIL
1\"/>

Revisions		Date		CONSULTANTS:		ARCHITECT/ENGINEERS:		Drawing Title		Project Title		Project No.		Office of Construction and Facilities Management	
				THP		JOHN POE ARCHITECTS		OFFICE TRAILER SUPPORT UPGRADES		CORRECT STRUCTURAL ISSUES ON TRAILERS		539-17-203		Department of Veterans Affairs	
				THP Limited, Inc. 100 East Eighth Street Cincinnati, Ohio 45202 Phone: 513.241.5222 Fax: 513.241.2981 www.thpltd.com		FRANK JOSEPH ELLERT E-50492		116 EAST THIRD STREET DAYTON, OHIO 45402-2130		Cincinnati, Ohio		JPA Project No. 15001.00		Building Number	
								Approved: Project Director		Date: 5/27/2015		Checked: RJK		Drawn: GJS	
														S200	

