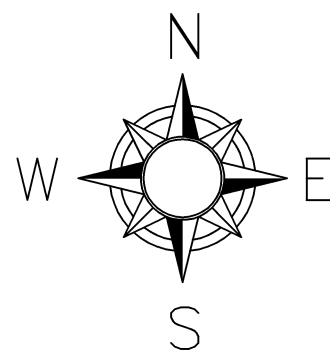


CONTROL SCHEDULE				
POINT NUMBER	NORTHING	EASTING	ELEVATION	SET CONTROL
506	5700.47	5236.67	1545.16	SET PK NAIL
508	5288.48	5411.84	1561.11	SET SPIKE
509	5380.26	5253.19	1543.36	SET PK NAIL
511	4978.92	5658.04	1567.81	SET SPIKE
515	5108.75	5505.97	1563.9	SET SPIKE



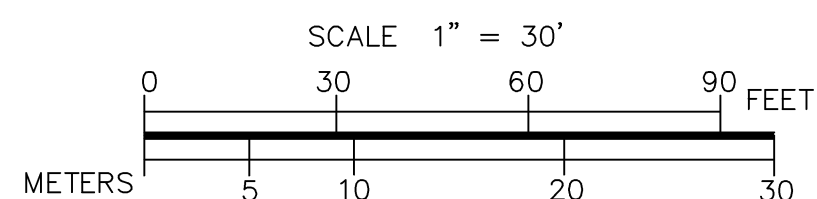
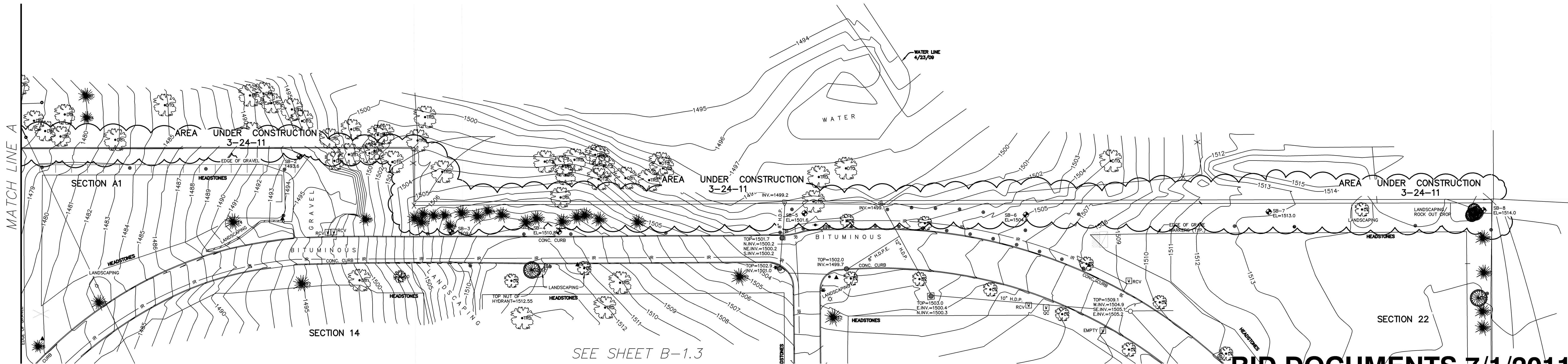
TREE LEGEND

- CONIFEROUS
- 2" CEDAR
- 4" DECIDUOUS
- 6" MAPLE
- 8" OAK
- 10" PINE

LEGEND

- AIR CONDITIONER
- CATCH BASIN
- CULVERT
- ELECTRIC BOX
- GRAVE SECTION MARKER
- SPRINKLER HEAD
- GATE VALVE
- CLEAN OUT
- GUARD POST
- HYDRANT
- HANDHOLE
- LIGHT POLE
- MANHOLE
- IRRIGATION CONTROL
- POWER POLE
- SIGN
- SOIL BORING
- TELEPHONE BOX
- ELECTRIC METER
- ROOF DRAIN
- BENCH
- CONTROL POINT
- GRAVE SECTION MONUMENT
- FENCE
- GAS MAIN
- OVERHEAD WIRES
- STORM SEWER
- UNDERGROUND ELECTRIC
- UNDERGROUND TELEPHONE
- WATER MAIN

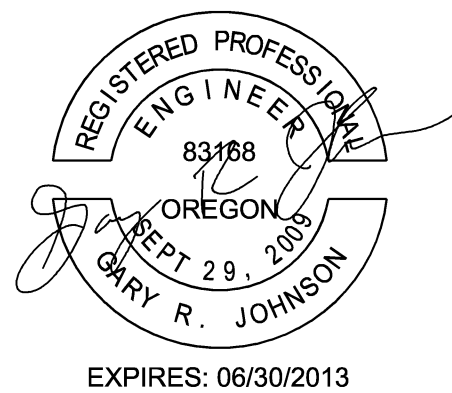
SEE SHEET B-1.3



SEE SHEET B-1.3

BID DOCUMENTS 7/1/2011

Revisions	Date



Anderson Engineering of Minnesota, LLC
13605 1st AVENUE NORTH, SUITE 100, PLYMOUTH, MN 55441
TEL (763) 412-4000 FAX (763) 412-4090
www.ae-mn.com



N ATIONAL
C EMETERY
A DMINISTRATION

Drawing Title		Project Title			Date	
EXISTING CONDITIONS MAP - NORTH		REPLACE ADMINISTRATION AND MAINTENANCE BUILDING AND SITE IMPROVEMENTS			7-1-2011	
Approved: Director, Office of Construction Management		Project No.			906CM3009	
Building Number		Checked GRJ	Drawn DD		DRAWING NO.	
Approved: Director, Project Management Service		Location EAGLE POINT NATIONAL CEMETERY 2763 RILEY ROAD EAGLE POINT, OR 97524			B-1.2	
					Dwg. 6 DF 166	