

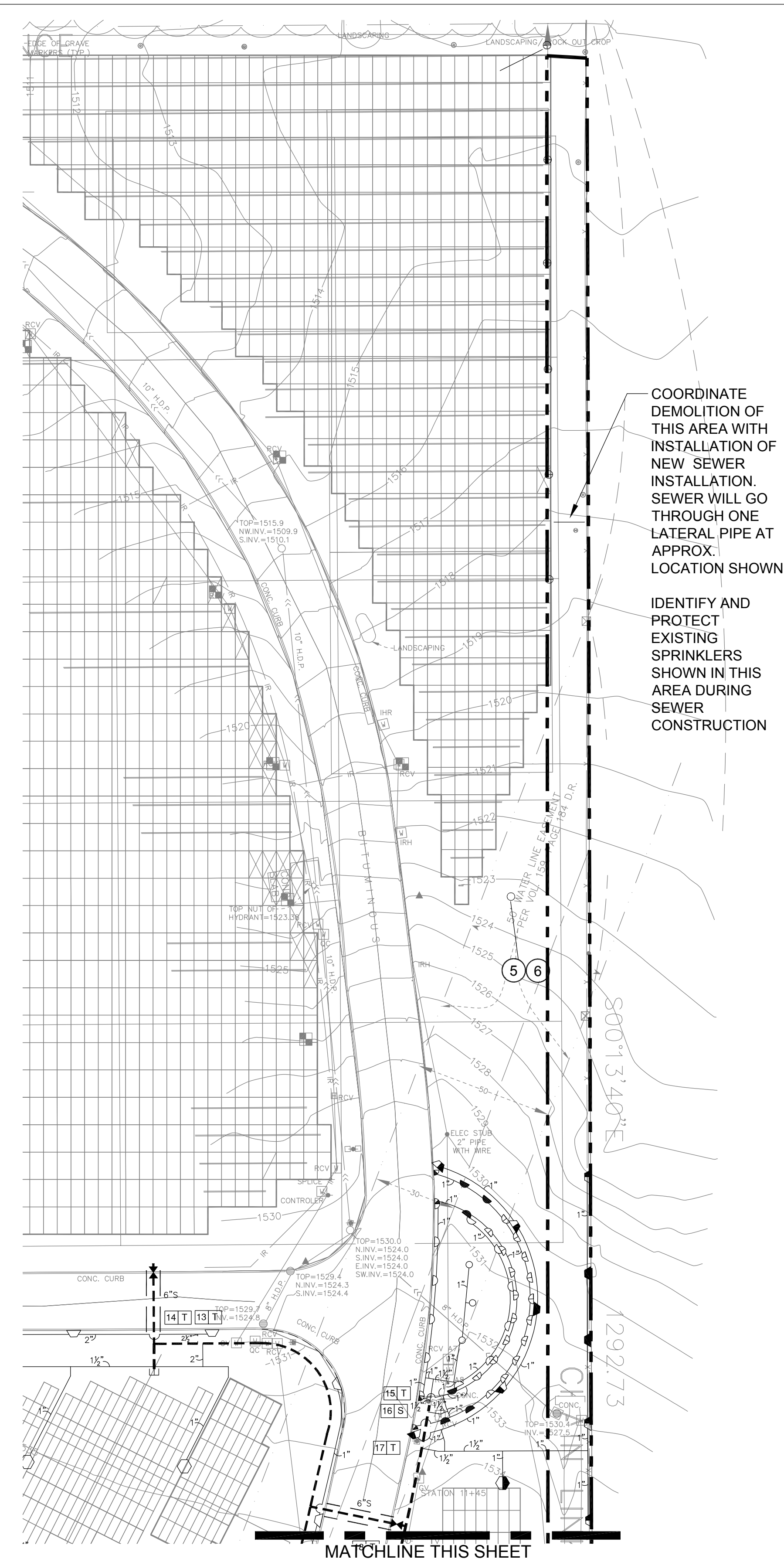
#### DEMOLITION LEGEND

- EXISTING MAINLINE PIPE
- CAP EXISTING MAINLINE PIPE
- CAP EXISTING LATERAL PIPE
- EXISTING LATERAL PIPE
- ● ● ● EXISTING SHORT RADIUS SPRINKLER
- ○ ○ ○ EXISTING ROTARY SPRINKLER
- > EXISTING STORM DRAIN
- EXISTING REMOTE CONTROL VALVE ASSEMBLY
- DEMOLITION BOUNDARY

NOTE: ALL IRRIGATION EQUIPMENT WITHIN THE DEMOLITION BOUNDARY AREA SHALL BE REMOVED AND EXCAVATION FILLED AND COMPACTED TO MATCH ADJOINING.

#### DEMOLITION FLAG NOTES

- D1 UNKNOWN LATERAL PIPE ROUTING. VERIFY LOCATION IN FIELD.
- D2 EXCAVATE AND EXPOSE LATERAL PIPE IN APPROXIMATE LOCATION INDICATED. CAP PIPE FOR FUTURE USE.
- D3 EXCAVATE AND EXPOSE MAINLINE AND CAP PIPE FOR UNTIL CONNECTION TO NEW IRRIGATION.
- D4 REMOVE ABANDONED VALVE BOX AT LOCATION INDICATED, FILL THE HOLE WITH SOIL AND COMPACT TO MATCH SURROUNDING CONDITIONS. REPLACE THE SOD IN THE DISTURBED AREA PER THE LANDSCAPE PLANTING SPECIFICATIONS.
- D5 REMOVE ALL IRRIGATION COMPONENTS WITHIN DEMOLITION BOUNDARY. PROPERLY DISPOSE OF CONTROLLERS AND SOLENOIDS OFF SITE. ABANDON EXISTING CONTROL WIRE UNDERGROUND IN PLACE. REMOVE AND DISPOSE OF CONTROL WIRE WITHIN TWO FEET OF REMOTE CONTROL VALVE BOXES.
- D6 REMOVE EXISTING LEIT SOLAR CONTROLLERS AND DISPOSE OF OFF SITE. REPAIR DEMOLITION AREA TO MATCH SURROUNDING CONDITIONS, REFER TO LANDSCAPE PLANTING DRAWINGS AND SPECIFICATIONS FOR SOD TYPE, SHOWN ON SHEETS 11.4 AND 11.5.



#### BID DOCUMENTS 7/1/2011

Revisions	Date



#### Anderson Engineering of Minnesota, LLC

13605 1st AVENUE NORTH, SUITE 100, PLYMOUTH, MN 55441  
TEL (763) 412-4000 FAX (763) 412-4090  
www.ae-mn.com



N ATIONAL  
C EMETERY  
A DMINISTRATION

Drawing Title <b>IRRIGATION DEMOLITION PLAN</b>	Project Title <b>REPLACE ADMINISTRATION AND MAINTENANCE BUILDING AND SITE IMPROVEMENTS</b>	Date <b>5-13-2011</b>
Approved: Director, Office of Construction Management	Building Number Checked GRJ	Project No. <b>906CM3009</b>
Approved: Director, Project Management Service	Location <b>EAGLE POINT NATIONAL CEMETERY 2763 RILEY ROAD EAGLE POINT, OR 97524</b>	DRAWING NO. <b>11.2</b> Dwg. 47 OF 181