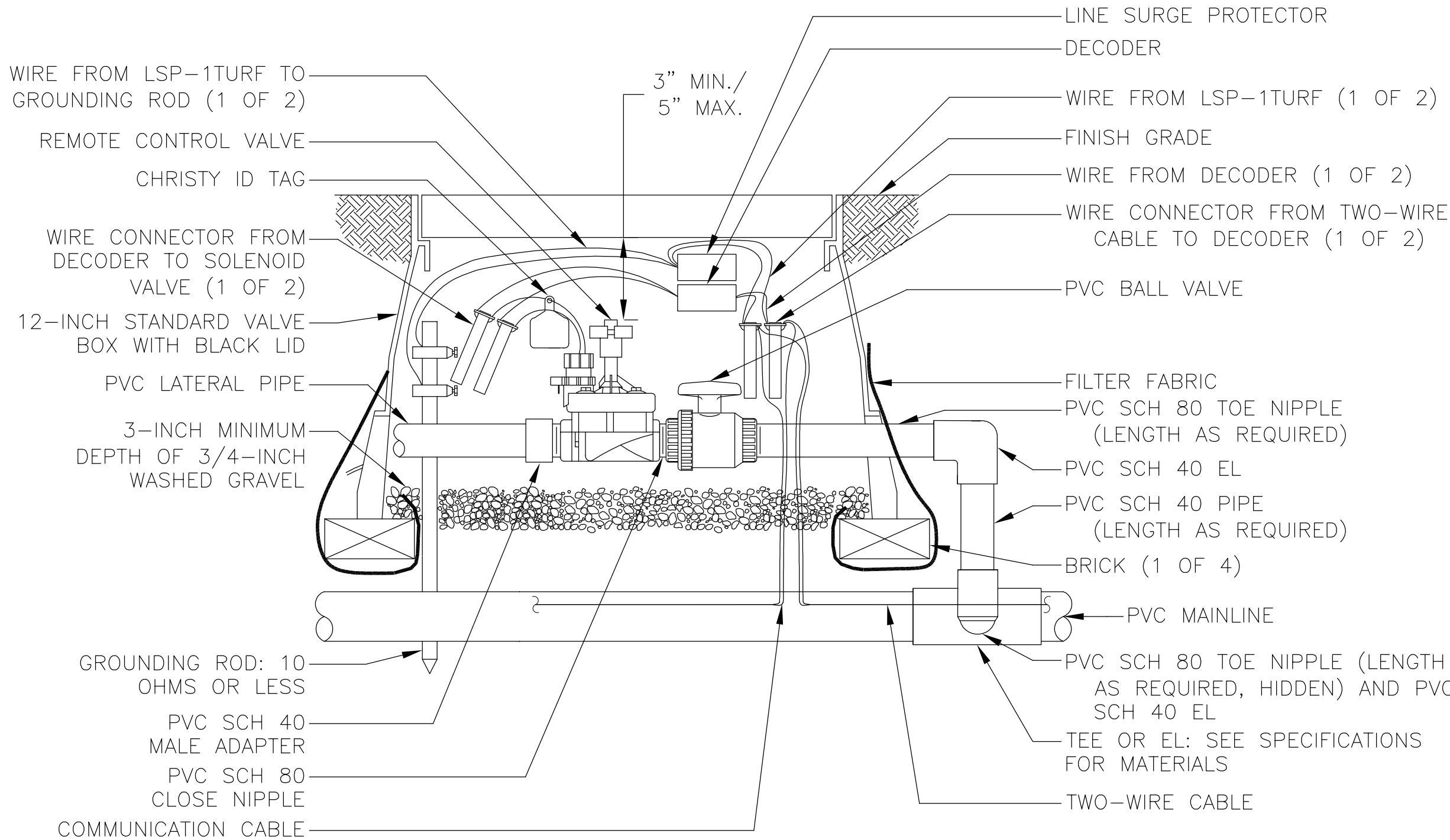


- NOTES:
1. FURNISH FITTINGS AND PIPING NOMINALLY SIZED IDENTICAL TO NOMINAL QUICK COUPLING VALVE INLET SIZE.
 2. INSTALL SWING JOINT LAY ARM BETWEEN 30° AND 45° OF LATERAL PIPE IN ORDER TO ABSORB DOWNWARD IMPACT. IF LATERAL PIPE IS NOT INSTALLED AT SPECIFIED DEPTH, CONSULT ENGINEER PRIOR TO INSTALLATION OF SWING JOINT.
 3. BRAND VALVE BOX COVER PER SPECIFICATIONS.

1 QUICK COUPLING VALVE ASSEMBLY

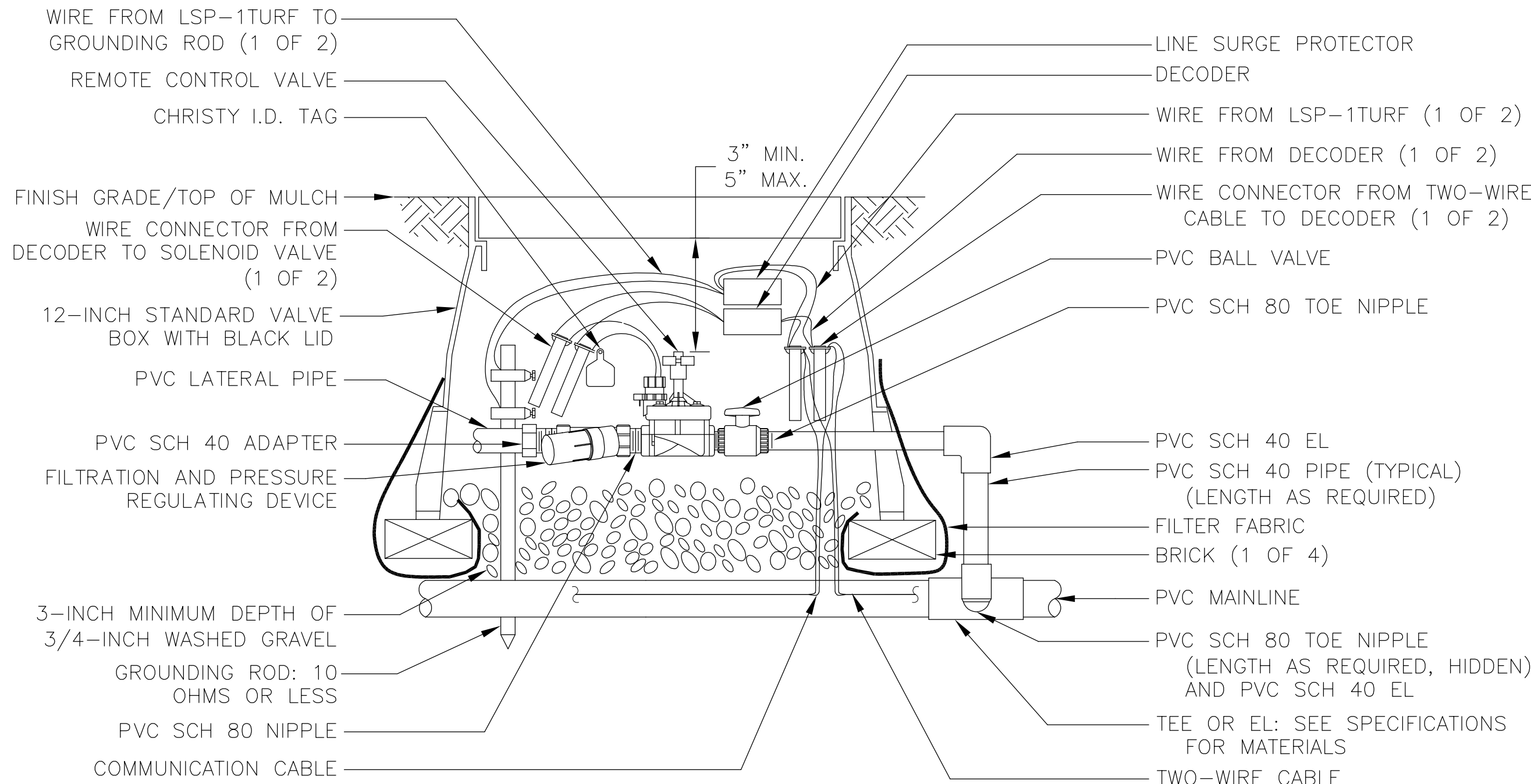
N.T.S.



- NOTES:
1. USE VALVE BOX EXTENSION AS NECESSARY TO ACHIEVE MINIMUM DIMENSIONS ABOVE ASSEMBLY.
 2. NOMINAL SIZE OF ALL COMPONENTS ARE TO BE THE SAME NOMINAL SIZE AS THE SOLENOID VALVE (SIZED AS SHOWN).
 3. INSTALL FILTER FABRIC AROUND EXTERIOR OF VALVE BOX. USE DUCT TAPE TO SECURE FABRIC TO PIPE AND VALVE BOX.
 4. TRANSITION TO PROPER LATERAL PIPE BURIAL DEPTH USING 45° ELBOW FITTINGS DOWNSTREAM OF REMOTE CONTROL VALVE ASSEMBLY.
 5. DO NOT CUT OUT ENDS OF VALVE BOX UNNECESSARILY.
 6. POSITION VALVE BOX OVER VALVE TO ALLOW ACCESS TO SOLENOID AND PROPER OPERATION OF BALL VALVE.
 7. COIL 3- FEET OF WIRE FOR EACH DECODER FOR SERVICE PURPOSES.
 8. BRAND VALVE BOX LID PER SPECIFICATIONS.

2 TWO-WIRE REMOTE CONTROL VALVE ASSEMBLY

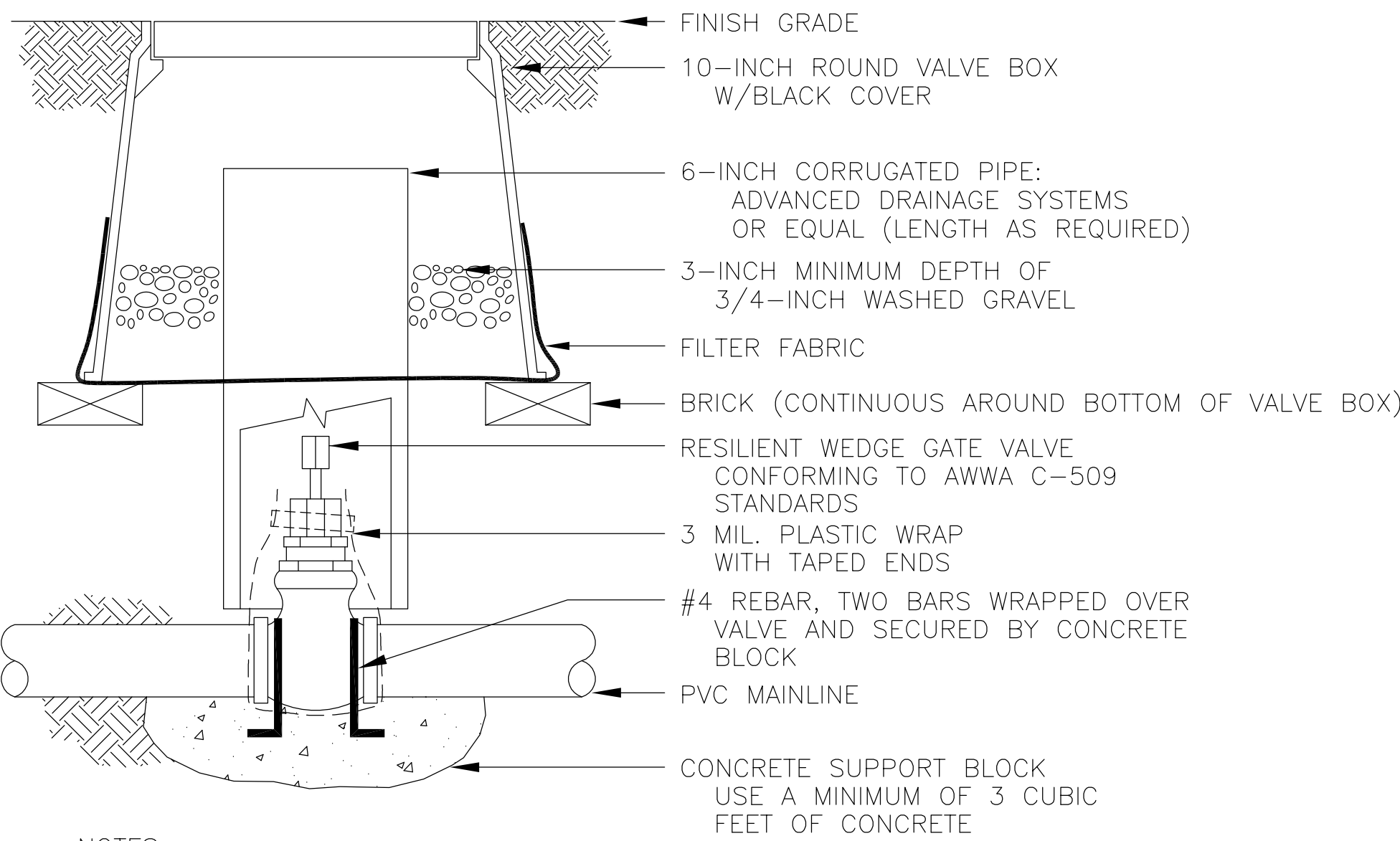
N.T.S.



- NOTES:
1. USE VALVE BOX EXTENSION AS NECESSARY TO ACHIEVE MINIMUM DIMENSIONS ABOVE ASSEMBLY.
 2. NOMINAL SIZE OF ALL COMPONENTS ARE TO BE THE SAME NOMINAL SIZE AS THE SOLENOID VALVE (SIZED AS SHOWN).
 3. INSTALL FILTER FABRIC AROUND EXTERIOR OF VALVE BOX. USE DUCT TAPE TO SECURE FABRIC TO PIPE AND VALVE BOX.
 4. TRANSITION TO PROPER LATERAL PIPE BURIAL DEPTH USING 45° ELBOW FITTINGS DOWNSTREAM OF REMOTE CONTROL VALVE ASSEMBLY.
 5. DO NOT CUT OUT ENDS OF VALVE BOX UNNECESSARILY.
 6. POSITION VALVE BOX OVER VALVE TO ALLOW ACCESS TO SOLENOID, AND PROPER OPERATION OF BALL VALVE.
 7. COIL 3- FEET OF WIRE FOR EACH DECODER FOR SERVICE PURPOSES.
 8. BRAND VALVE BOX COVER PER SPECIFICATIONS.

3 TWO-WIRE DRIP REMOTE CONTROL VALVE ASSEMBLY

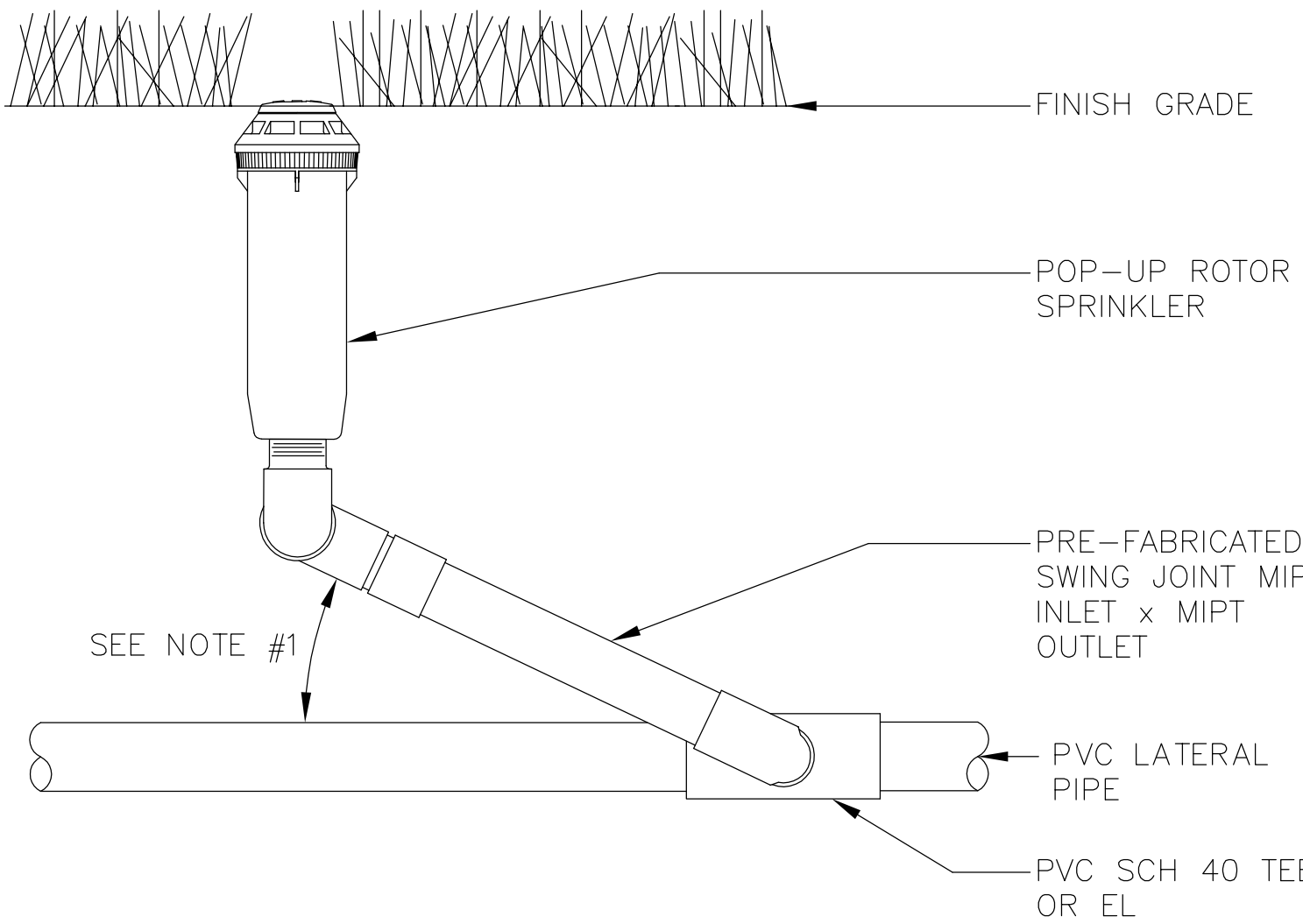
N.T.S.



- NOTES:
1. NOMINAL SIZE OF GATE VALVE TO MATCH NOMINAL MAINLINE SIZE.
 2. INSTALL A 4-INCH THICK CONCRETE PAD BELOW VALVE WITH NO. 4 REBAR WHEN USING PUSH-ON TYPE VALVES.
 3. RESILIENT WEDGE GATE VALVE MAY HAVE EITHER MECHANICAL JOINT OR PUSH-ON GASKETED ENDS. THE OPERATOR IS A WRENCH NUT.
 4. ANCHOR ISOLATION VALVE TO CONCRETE BY BENDING REBAR OVER EACH END OF VALVE AND EXTENDING A MINIMUM OF 6-INCHES INTO CONCRETE SUPPORT BLOCK.
 5. WRAP VALVE ENDS AND BODY IN 3 MIL. PLASTIC PRIOR TO POURING CONCRETE.
 6. CONCRETE SUPPORT BLOCK IS TO BE POURED UNDER ISOLATION GATE VALVE. ONLY THE BOTTOM OF THE ISOLATION GATE VALVE TO BE IN CONTACT WITH CONCRETE.
 7. INSTALL FILTER FABRIC AROUND EXTERIOR OF VALVE BOX. USE DUCT TAPE TO SECURE FABRIC TO PIPE AND VALVE BOX.
 8. BRAND VALVE BOX COVER PER SPECIFICATIONS.

4 ISOLATION GATE VALVE ASSEMBLY

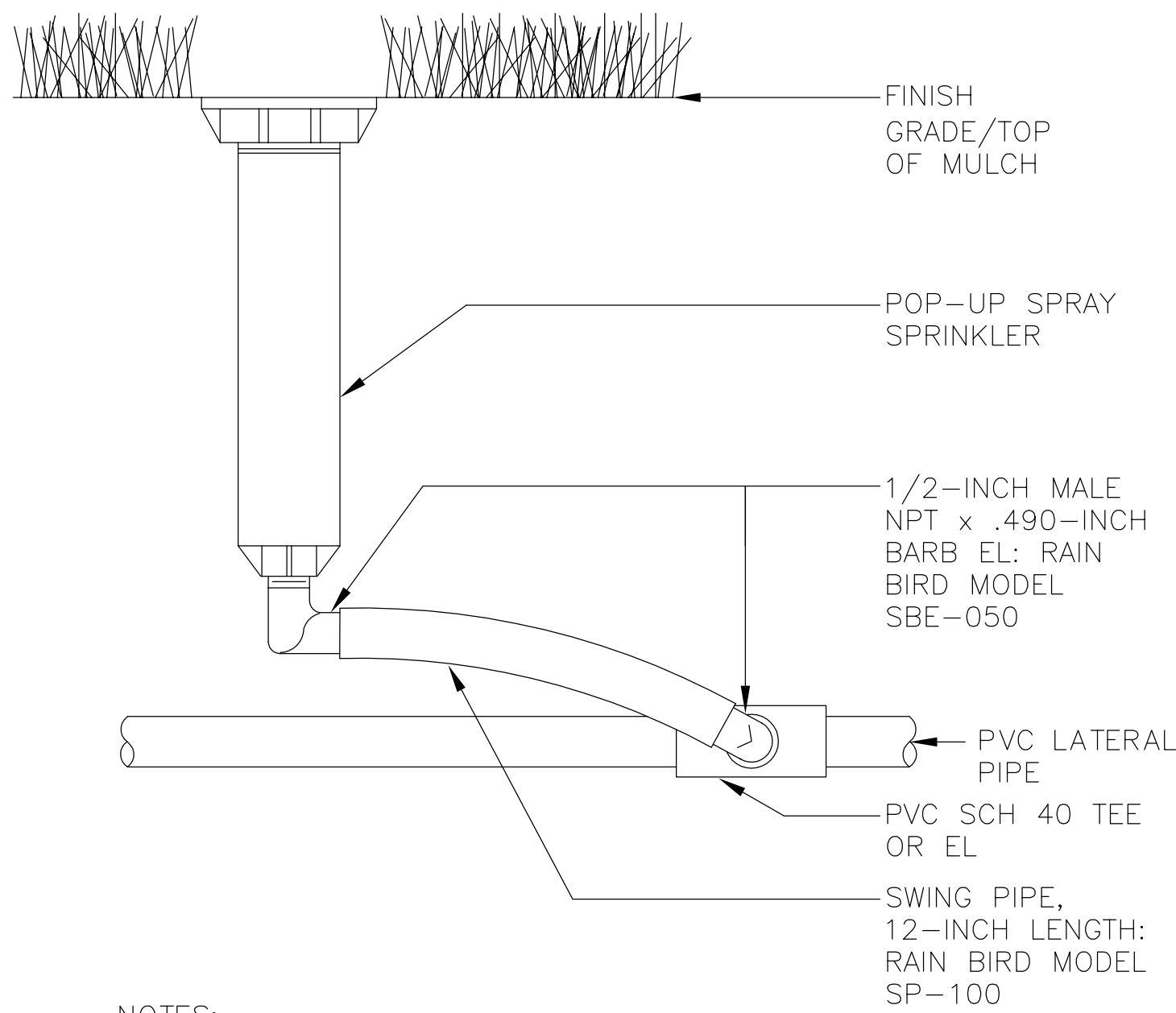
N.T.S.



- NOTE:
1. INSTALL SWING JOINT LAY ARM BETWEEN 30° AND 45° OF LATERAL PIPE IN ORDER TO ABSORB DOWNWARD IMPACT. IF LATERAL PIPE IS NOT INSTALLED AT SPECIFIED DEPTH, CONSULT ENGINEER PRIOR TO INSTALLATION OF SWING JOINT.

5 POP-UP ROTOR SPRINKLER ASSEMBLY

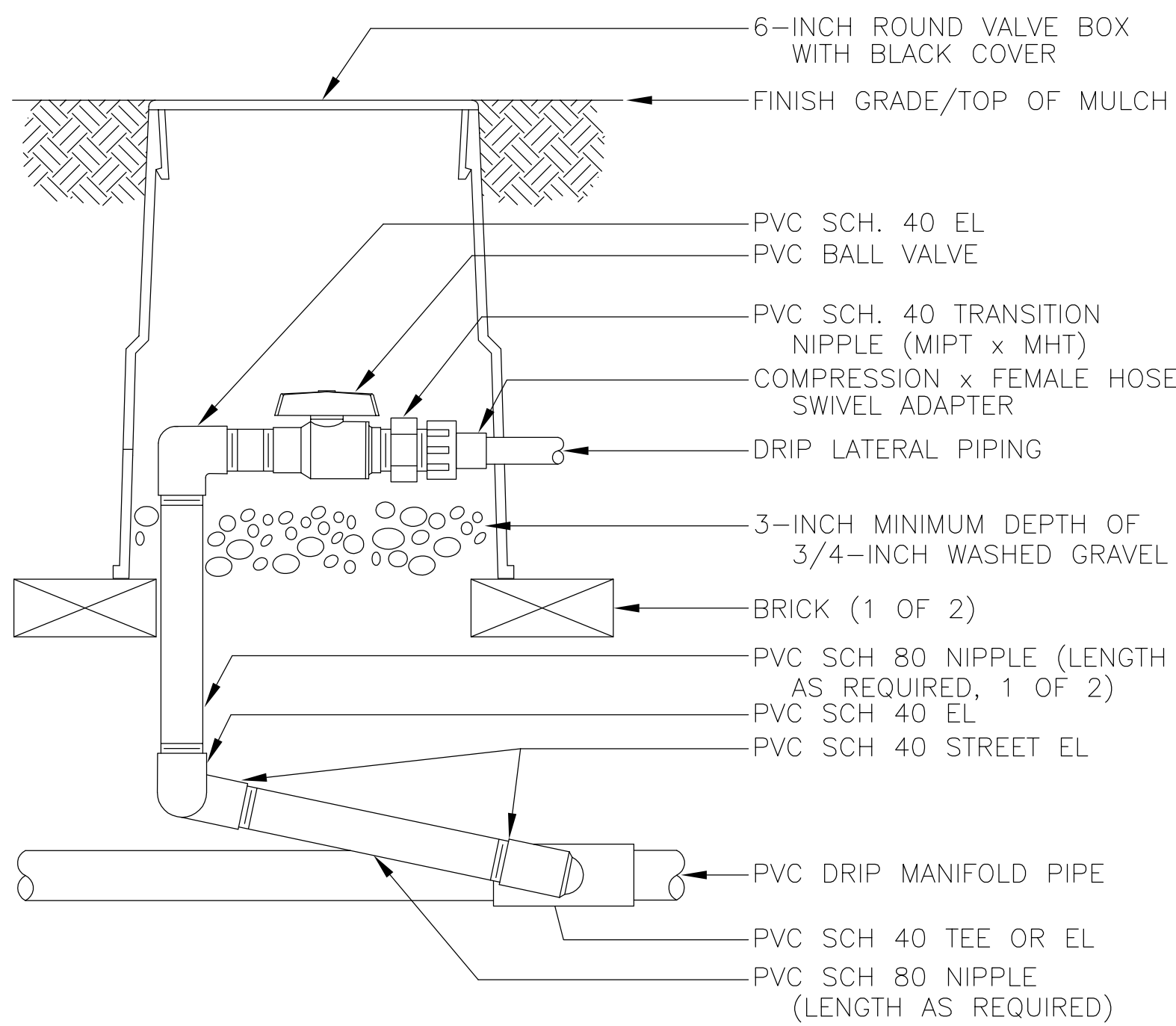
N.T.S.



- NOTES:
1. INSTALL 4-INCH POP-UP HEIGHT IN TURF AREAS.
 2. INSTALL 12-INCH POP-UP HEIGHT IN LANDSCAPED AREAS.

6 POP-UP SPRAY SPRINKLER ASSEMBLY

N.T.S.



- NOTE:
1. BRAND VALVE BOX COVER PER SPECIFICATIONS.

7 ZONE CONTROL VALVE ASSEMBLY

N.T.S.

BID DOCUMENTS 7/1/2011

Revisions	Date



Anderson Engineering of Minnesota, LLC

13605 1st AVENUE NORTH, SUITE 100, PLYMOUTH, MN 55441
TEL (763) 412-4000 FAX (763) 412-4090
www.ae-mn.com



NATIONAL
CEMETERY
ADMINISTRATION

Drawing Title IRRIGATION DETAILS	Project Title REPLACE ADMINISTRATION AND MAINTENANCE BUILDING AND SITE IMPROVEMENTS	Date 5-13-2011
Approved: Director, Office of Construction Management	Building Number 	Project No. 906CM3009
Approved: Director, Project Management Service	Checked GRJ	Drawn AMT/PSH
	Location EAGLE POINT NATIONAL CEMETERY 2763 RILEY ROAD EAGLE POINT, OR 97524	DRAWING NO. 11.7
		Dwg. 52 Of 181