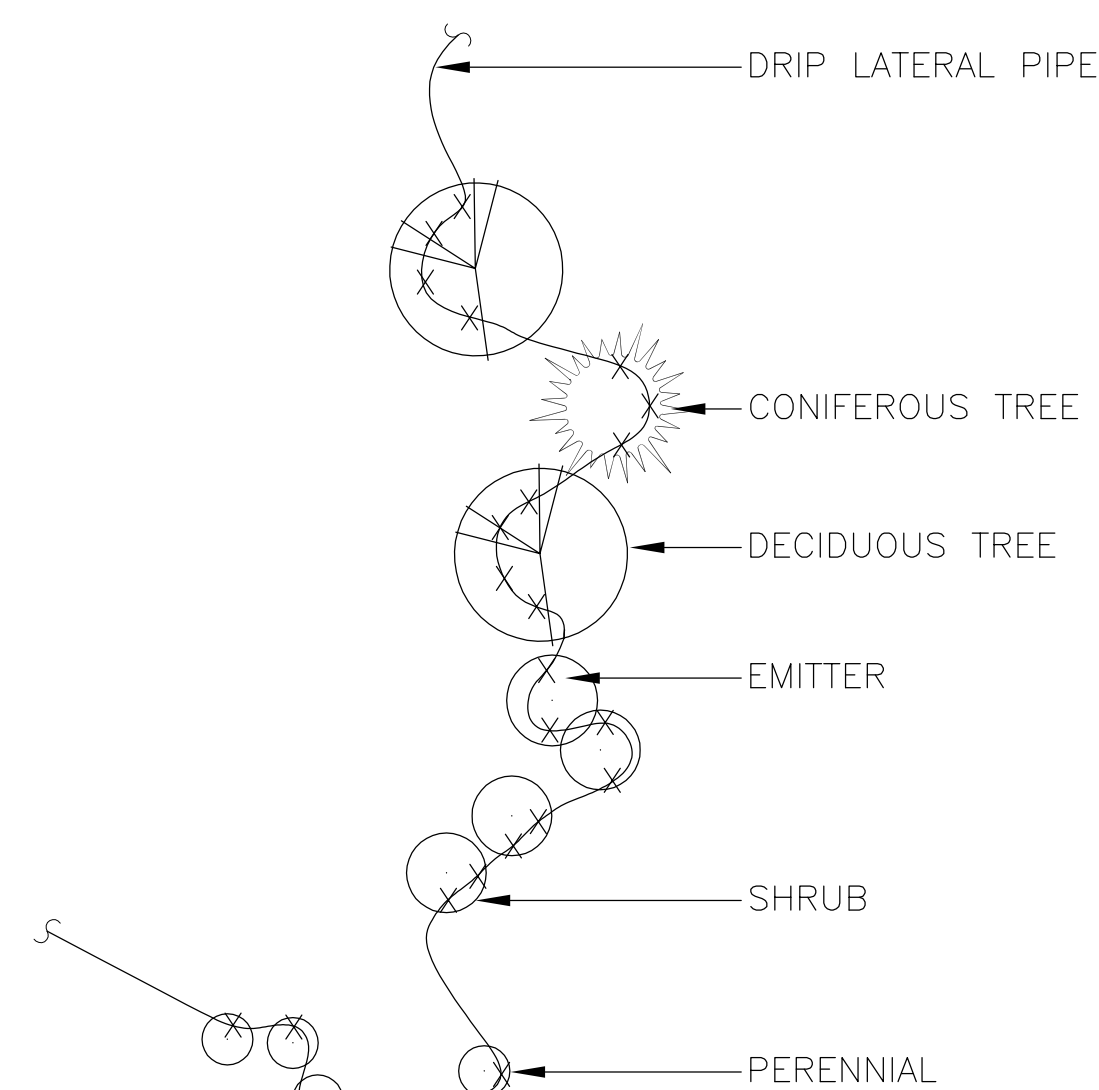


1) HYDRANT ASSEMBLY

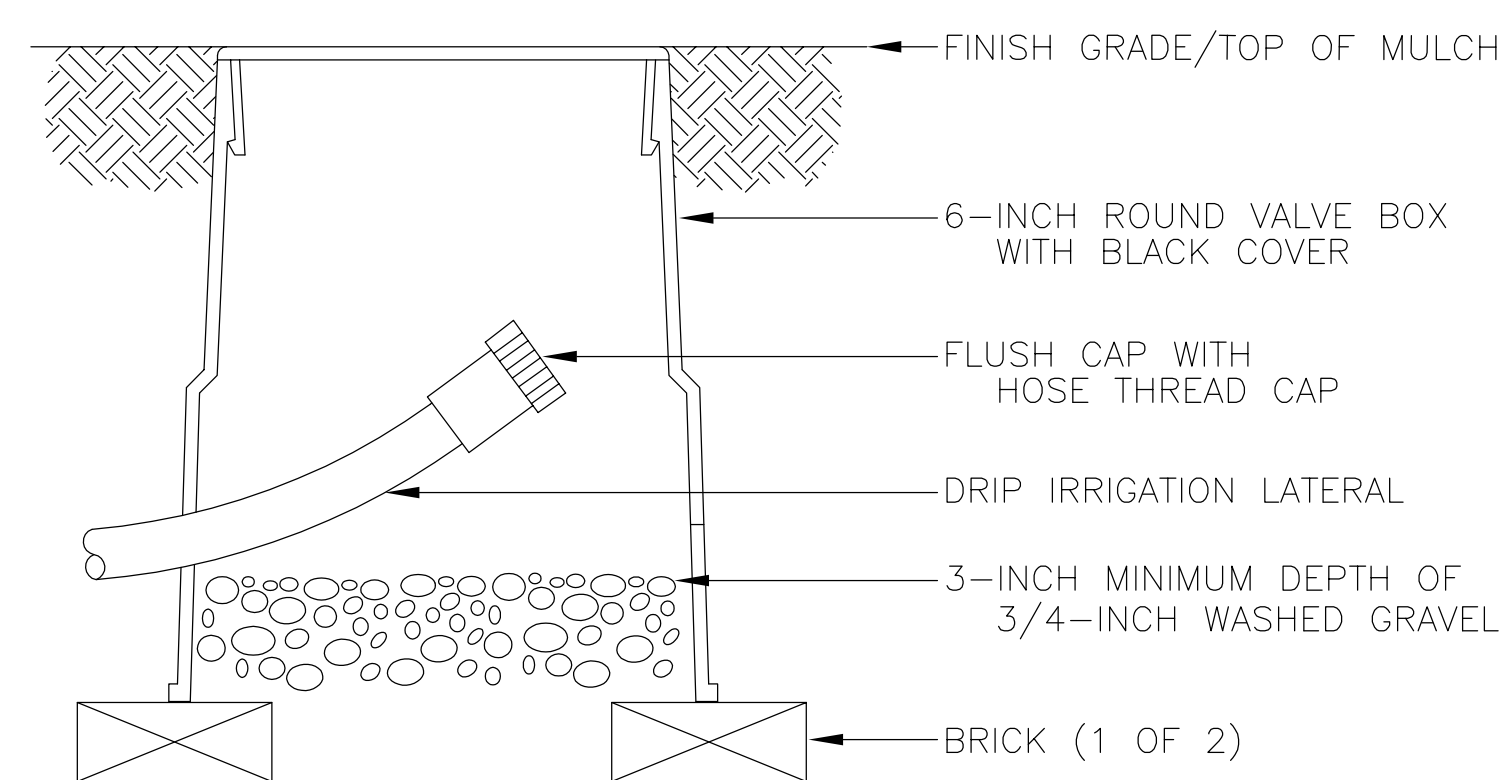
N.T.S.



- NOTES:
1. EMITTERS SHALL BE LOCATED IMMEDIATELY ADJACENT TO PERENNIALS AND AT THE OUTSIDE PERIMETER OF THE PLANTING PIT OF ALL SHRUBS AND TREES.
  2. INSTALL FOUR 1 GPH EMITTERS PER DECIDUOUS TREE.
  3. INSTALL THREE 1 GPH EMITTER PER CONIFEROUS TREE.
  4. INSTALL TWO 1 GPH EMITTER PER SHRUB.
  5. INSTALL ONE 1 GPH EMITTER PER PERENNIAL.

## 2) DRIP EMITTER PLACEMENT DETAIL

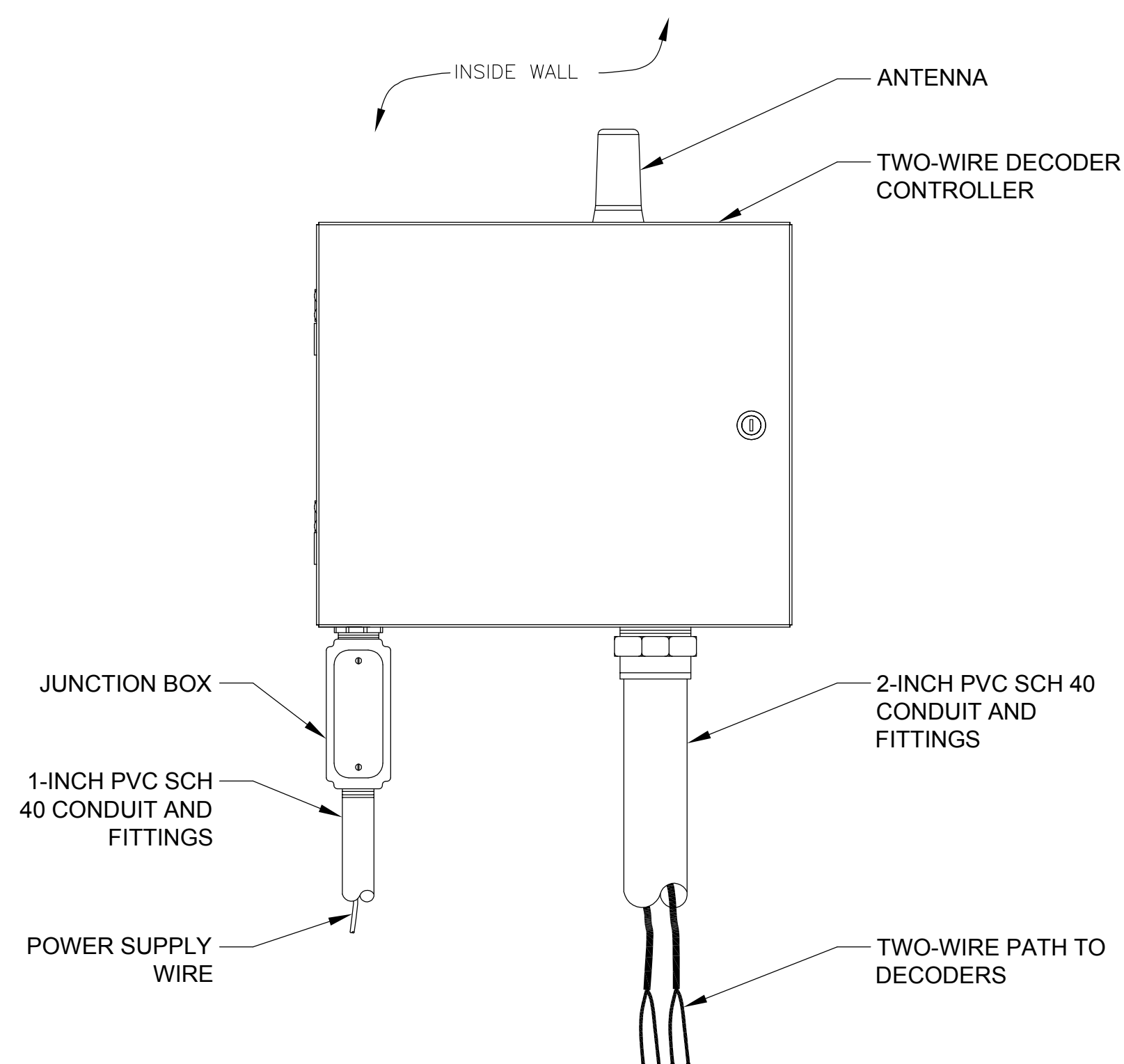
N.T.S.



- NOTE:
1. INSTALL FLUSH CAP ASSEMBLY AT THE END OF EACH DRIP LATERAL SEGMENT.
  2. BRAND VALVE BOX COVER PER SPECIFICATIONS.

3) FLUSH CAP  
ASSEMBLY

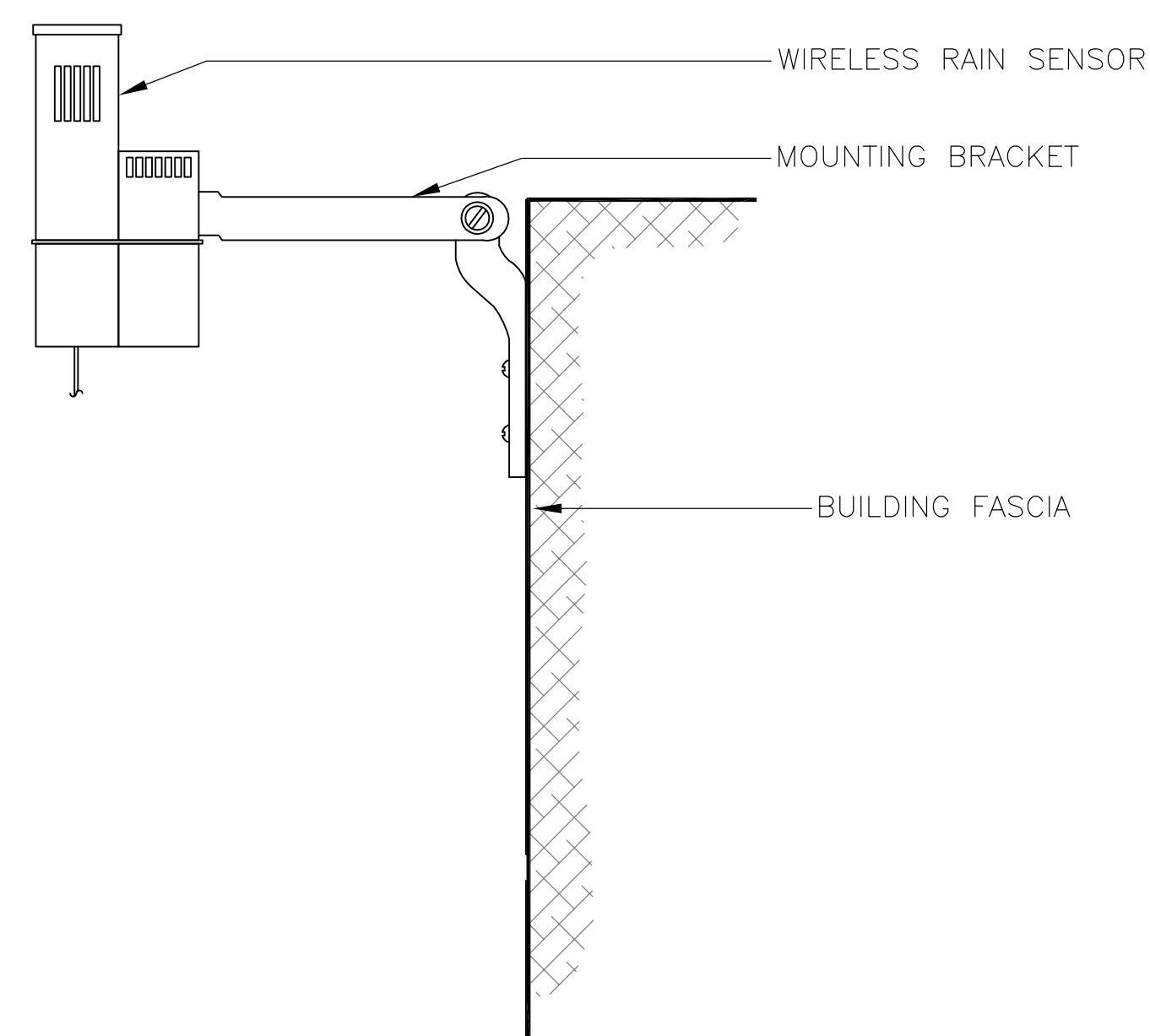
N.T.S.



- NOTES:
1. CONDUIT FOR POWER WIRE AND TWO WIRE PATH THROUGH THE EXTERIOR WALL HAS BEEN COORDINATED WITH THE ELECTRICAL DRAWINGS, IRRIGATION CONTRACTOR TO REVIEW THE SLEEVE LOCATIONS WITH THE ELECTRICAL CONTRACTOR PRIOR TO CONSTRUCTION.
  2. CONTRACTOR TO PERFORM A RADIO SURVEY PRIOR TO INSTALLING REMOTE CONTROL ANTENNA TO VERIFY THAT THE RADIO WILL OPERATE WITH THE ANTENNA MOUNTED ON THE CONTROLLER. NOTIFY THE RESIDENT ENGINEER IMMEDIATELY IF THE RADIO SURVEY INDICATES THAT AN EXTERNAL ANTENNA WILL BE NEEDED.

4 IRRIGATION DECODER CONTROLLER  
ASSEMBLY

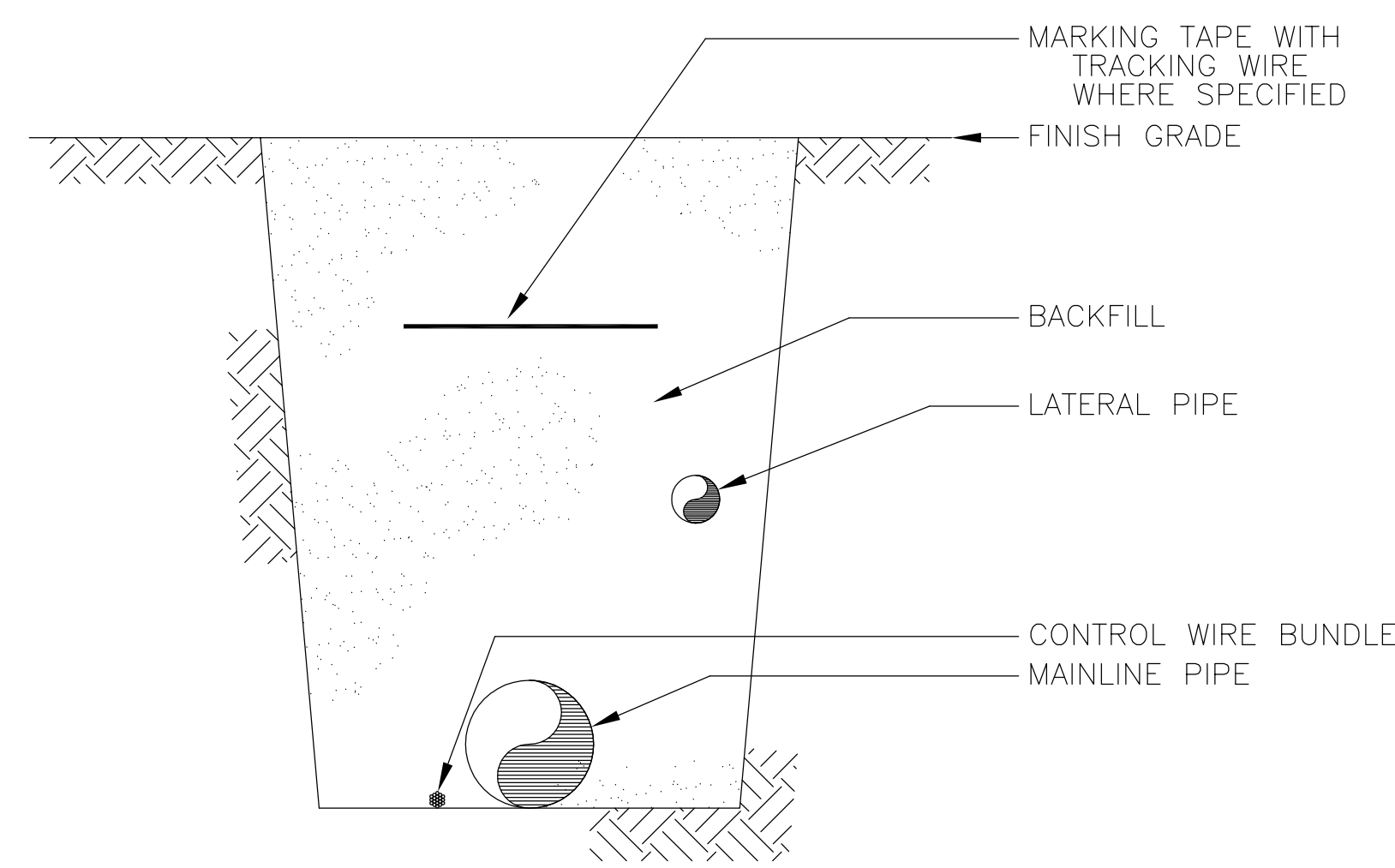
N.T.S.



- NOTE:  
1. MOUNT RAIN SENSOR IN SUITABLE LOCATION ON BUILDING WALL PER  
MANUFACTURER'S INSTRUCTIONS WITHIN 300' OF CONTROLLER LOCATION.

5) RAIN SENSOR ASSEMBLY

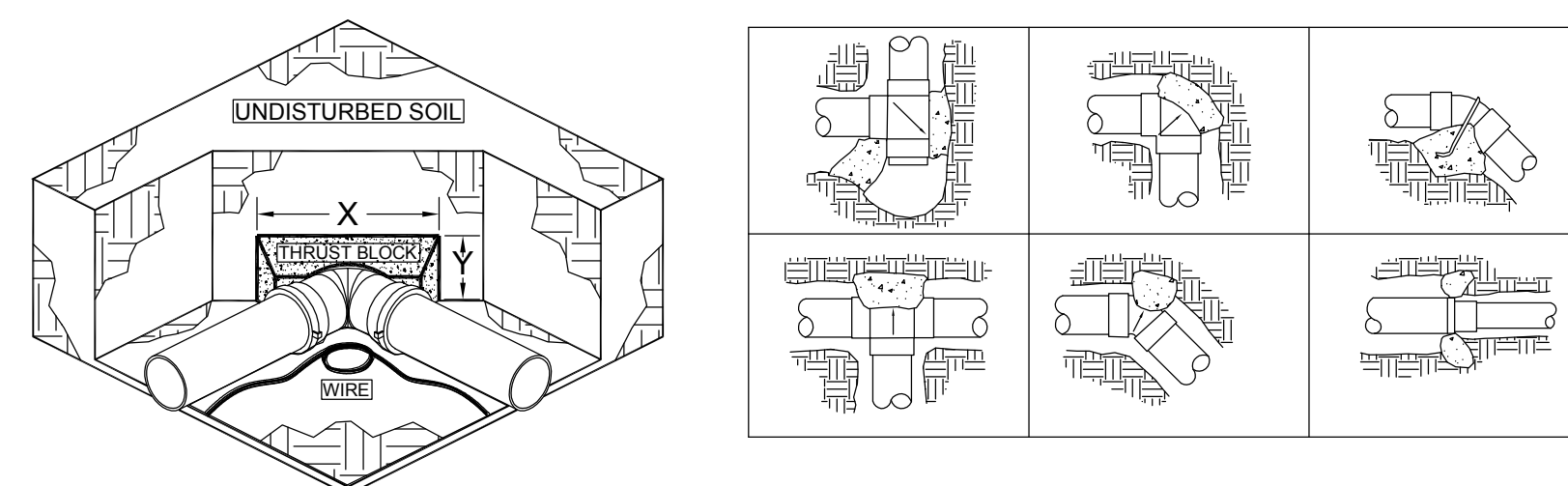
N.T.S.



- NOTE:  
1. REFER TO IRRIGATION SPECIFICATIONS FOR  
COVERAGE DEPTH TO BURIED PIPE AND WIRE.

6 ) TYPICAL TRENCH  
DETAIL

N.T.S.



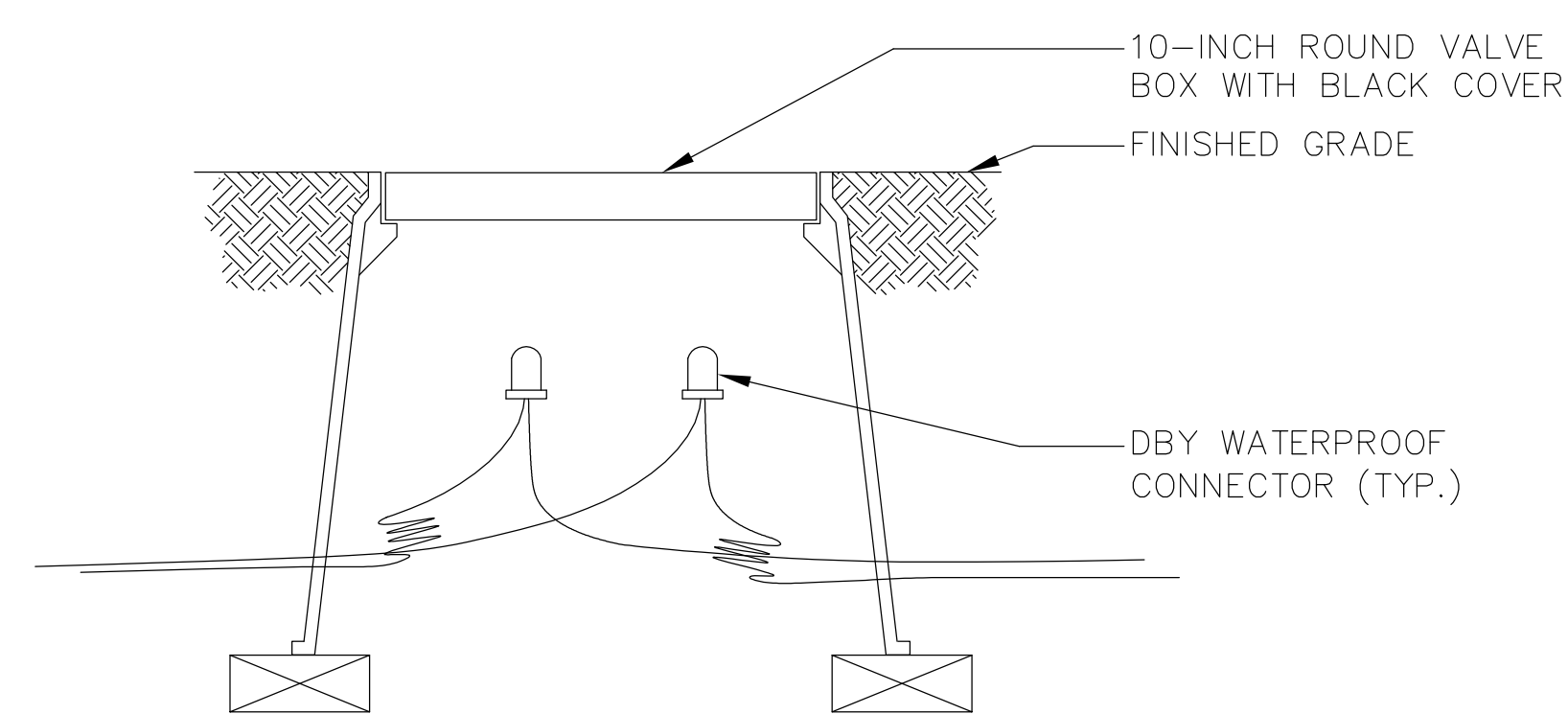
THRUST BLOCK SURFACE AREA (SF) AGAINST UNDISTURBED SOIL. (X x Y)= (SF)

FITTING SIZE	11 1/4" BEND(SF)	22 1/2" BEND(SF)	45° BEND (SF)	90° BEND (SF)	TEE OR DEAD END(SF)
3"	0.21	0.42	0.82	1.51	1.07

- NOTES:
1. INSTALL AND TEST MAINLINE ACCORDING TO MANUFACTURER'S INSTALLATION SPECIFICATIONS.
  2. REFER TO SPECIFICATIONS FOR ALL TRENCH DEPTHS AND WIDTHS.
  3. USE NO. 4 REBAR WITH MASTIC COATING WHERE PIPE MUST BE ANCHORED TO THRUST BLOCK.
  4. INSTALL THRUST BLOCK SO THE HORIZONTAL (X) AND VERTICAL (Y) DIMENSIONS OF THE THRUST BLOCK ARE APPROXIMATELY EQUAL TO THE THRUST BLOCK WITH A MINIMUM THICKNESS FROM THE PIPE TO THE UNDISTURBED SOIL OF TWO TIMES THE DIAMETER OF THE PIPE.
  5. THRUST BLOCK SIZING ASSUMES A MAXIMUM OPERATING PRESSURE OF 100 PSI, A MAXIMUM VELOCITY OF 5 FEET PER SECOND, AND A SOIL BEARING CAPACITY OF 1000 LBS/FT<sup>2</sup>.

7) THRUST BLOCK  
DETAIL

N.T.S.



- NOTES:  
1. BRAND VALVE BOX COVER PER SPECIFICATIONS.  
2. COIL 3- FEET OF WIRE IN SPLICE BOX.

8) SPLICE BOX  
DETAIL

N.T.S.

[illegible]

Anderson Engineering of Minnesota, LLC

13605 1st AVENUE NORTH, SUITE 100, PLYMOUTH, MN 55441  
TEL (763) 412-4000 FAX (763) 412-4090  
www.ae-mn.com



NATIONAL  
CEMETERY  
ADMINISTRATION

Drawing Title  <h1 style="text-align: center;">IRRIGATION DETAILS</h1>		Project Title  <h1 style="text-align: center;">REPLACE ADMINISTRATION AND MAINTENANCE BUILDING AND SITE IMPROVEMENTS</h1>		Date  <h1 style="text-align: center;">5-13-2011</h1>	
Approved: Director, Office of Construction Management		Building Number	Checked GRJ	Drawn AMT/PSH	Project No.  <h1 style="text-align: center;">906CM3009</h1>
Approved: Director, Project Management Service		Location  <h1 style="text-align: center;">EAGLE POINT NATIONAL CEMETERY 2763 RILEY ROAD EAGLE POINT, OR 97524</h1>		DRAWING NO.  <h1 style="text-align: center;">11.8</h1>	
				Dwg. 53 Of 181	