

2  
A-1001  
-2.3

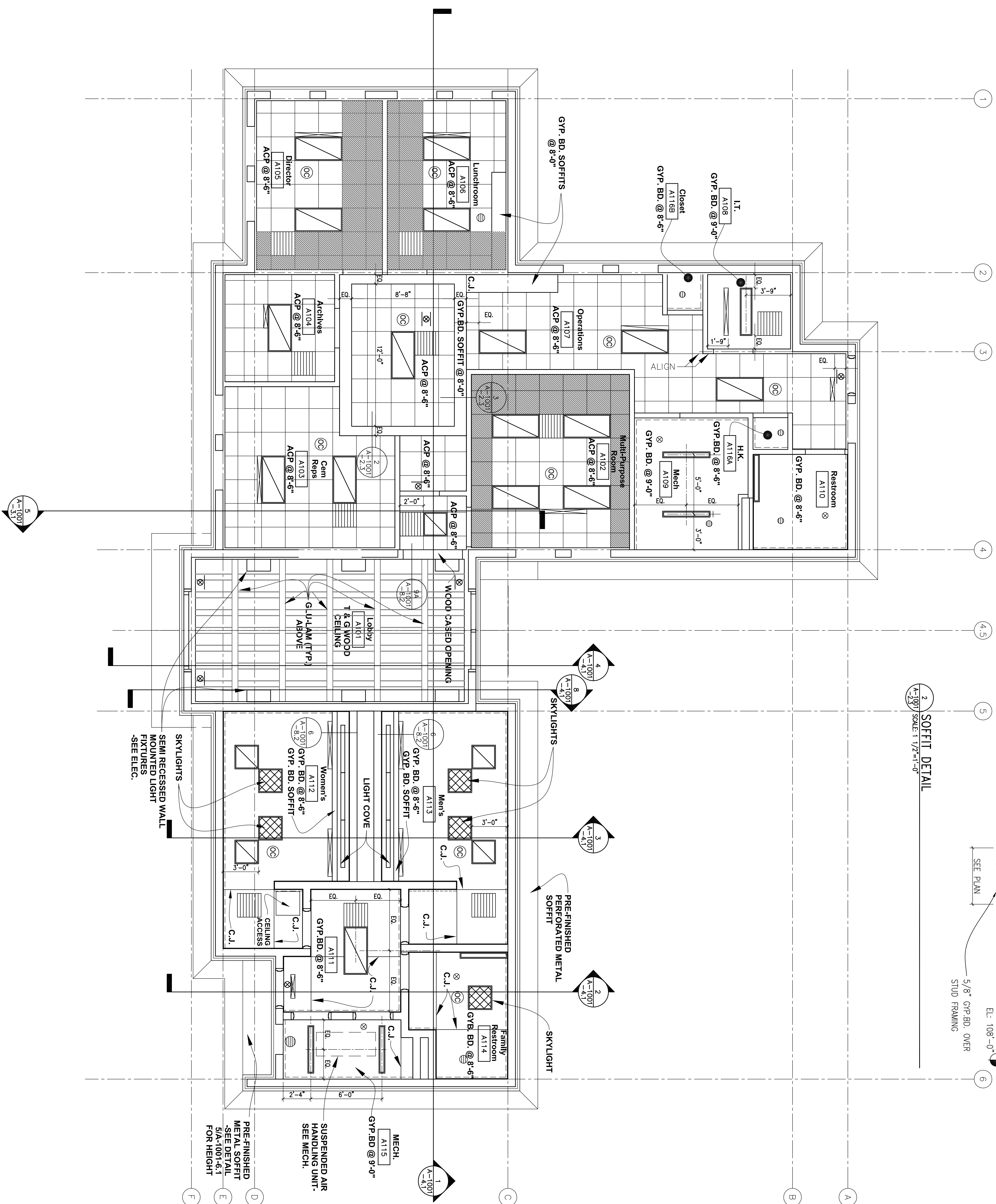
SOFFIT DETAIL

SCALE: 1/2"=1'-0"

3  
A-1001  
-2.3

SOFFIT DETAIL AT WALL

SCALE: 1 1/2"=1'-0"



GENERAL NOTES:

1. ALL ACOUSTIC PANEL CEILINGS ARE TO BE CENTERED IN ROOMS UNLESS NOTED OTHERWISE
2. SEE DETAIL 7/A-1001-8.3 FOR CONTROL JOINT DETAIL AT GYP. BD. CEILINGS
3. X

REFLECTED CEILING LEGEND	
DESCRIPTION	
	2x4 FLUORESCENT LIGHT FIXTURE
	2x2 FLUORESCENT LIGHT FIXTURE
	2x2 SQUARE DIFFUSER
	LINEAR FLUORESCENT LIGHT FIXTURE
	RECESSED LUMINAIRE
	2x2 SUSPENDED CEILING GRID -SEE DETAIL 6/4-100+8-3 FOR SEISMIC CODE CONDITION
	SUPPLY (LINEAR)
	SUPPLY GRILLE
	EXHAUST/RETURN GRILLES
	ACCESS PANEL
	FLLOATING EDGE OF GYP RD CEILING -SEE DETAIL 4, 5/4-100+8-3 FOR SEISMIC REQUIREMENT
	EMERGENCY EXIT LIGHTING
	ACOUSTIC BATT ABOVE CEILING -SEE DETAIL 6/4-100+8-2

**BID DOCUMENTS 7/1/2011**

[illegible]