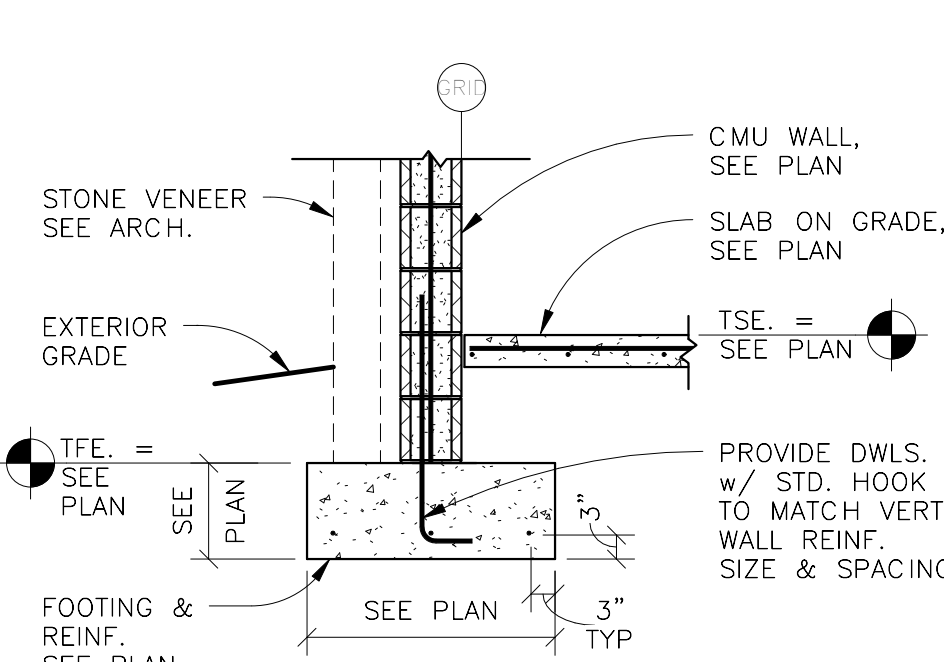
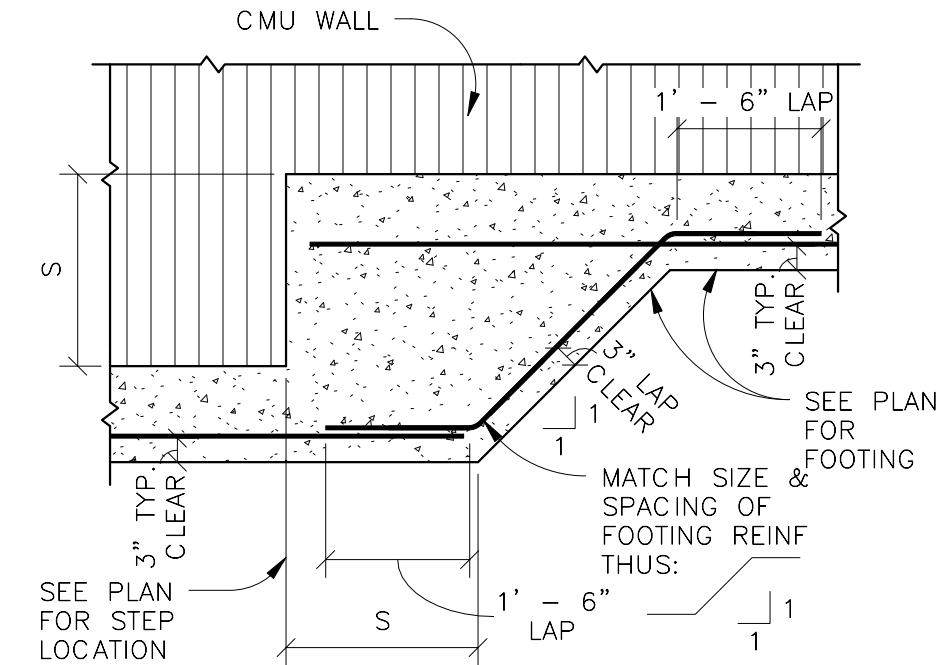


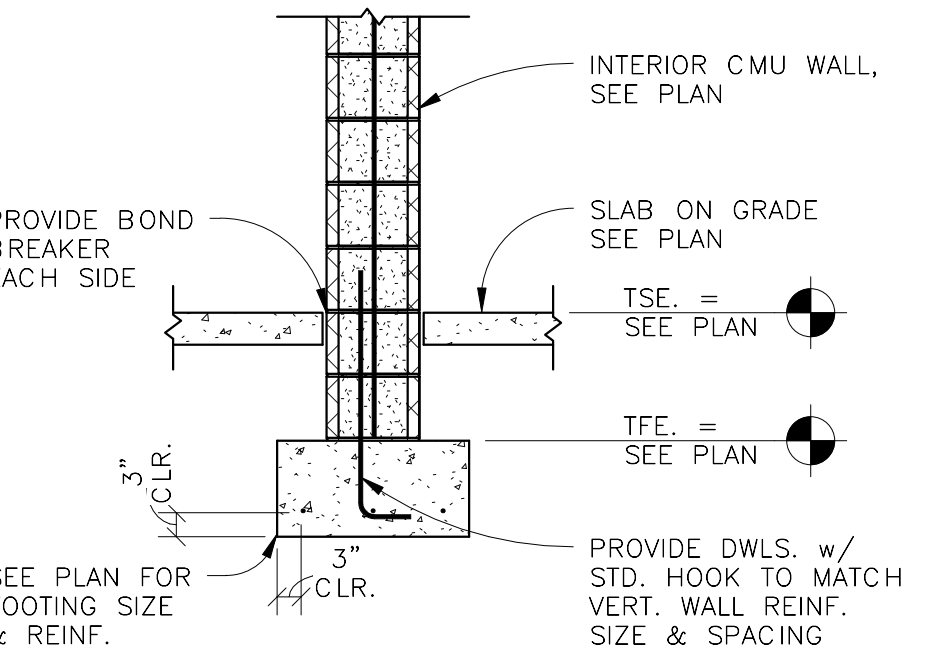
6 CONCRETE COVER FOR UTILITY PIPE
1/2" = 1'-0"



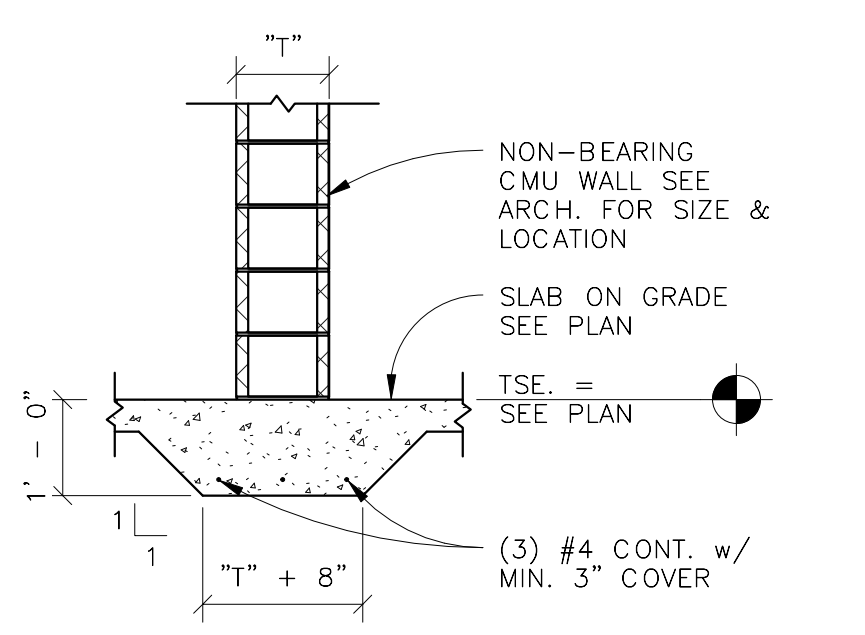
1 SECTION
1/2" = 1'-0"



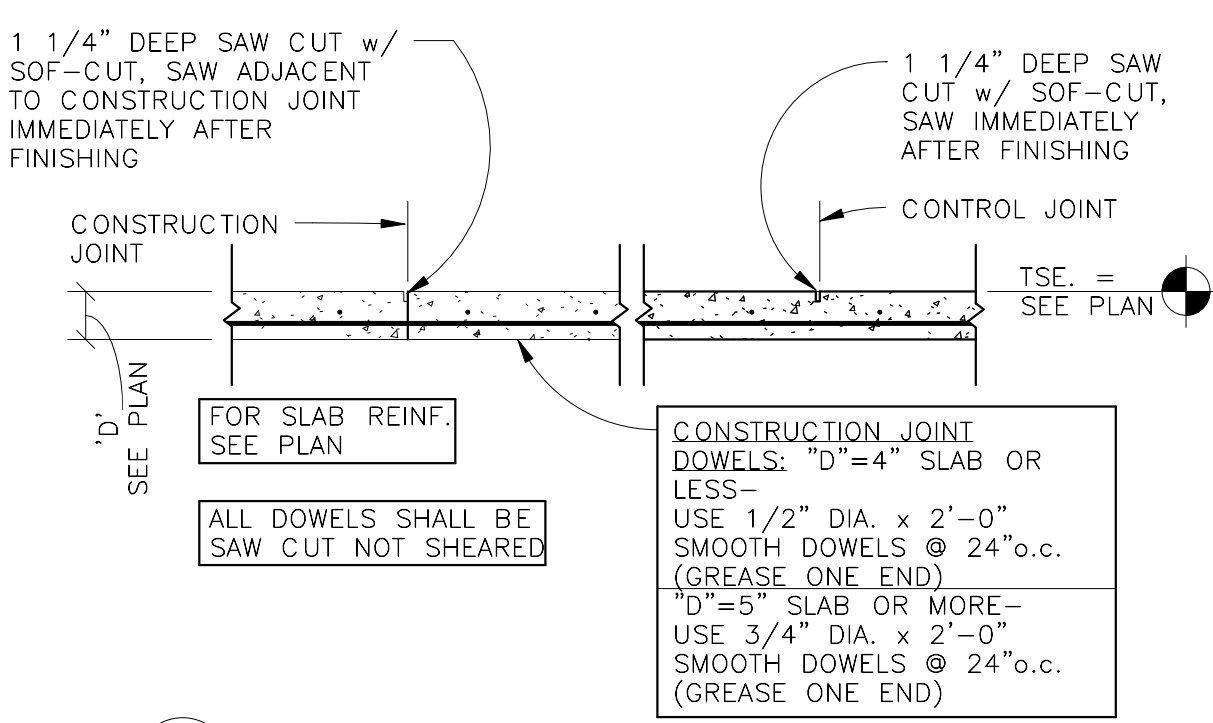
7 SECTION
1/2" = 1'-0"



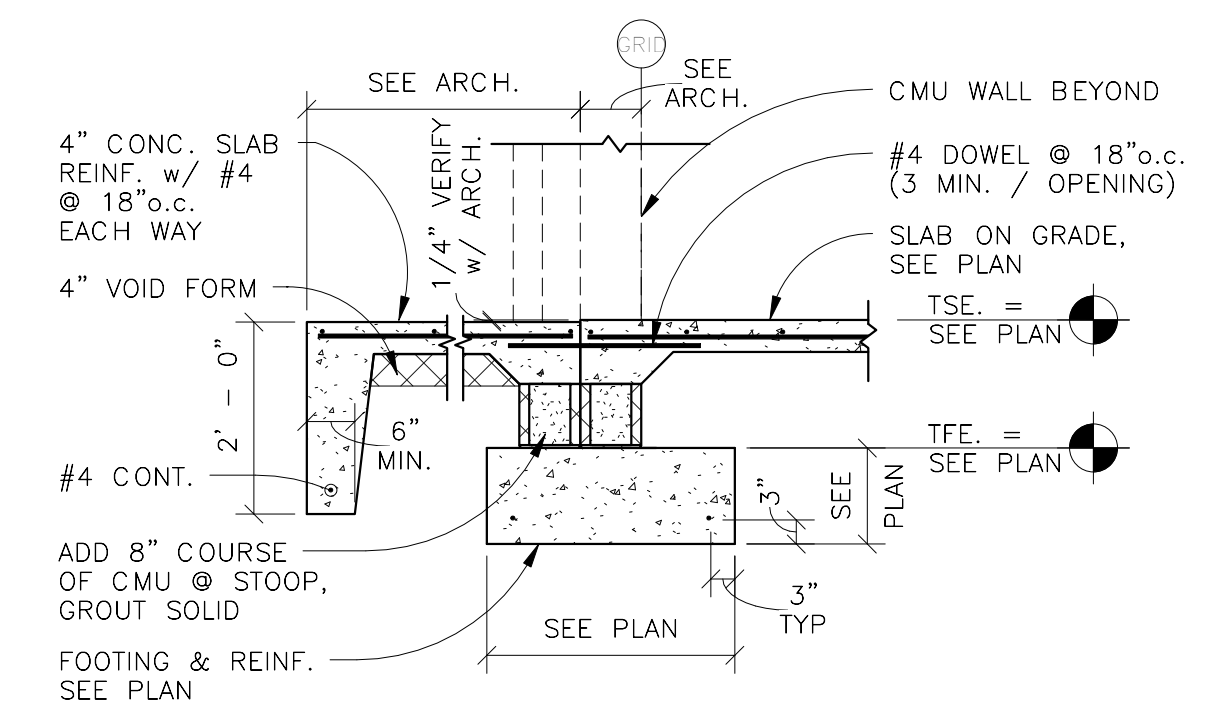
2 SECTION
1/2" = 1'-0"



3 SECTION
1/2" = 1'-0"



4 SECTION
1/2" = 1'-0"



5 SECTION
1/2" = 1'-0"

BID DOCUMENTS 7/1/2011

Revisions	Date



Advanced Structural Technologies
5001 American Blvd. W., Suite 800
Bloomington, MN 55437
(952) 854-9302 tel
(952) 854-9690 fax
www.astmn.com



Anderson Engineering of Minnesota, LLC
13605 1st AVENUE NORTH, SUITE 100, PLYMOUTH, MN
TEL (763) 412-4000 FAX (763) 412-4090
www.ae-mn.com



NATIONAL
CEMETERY
ADMINISTRATION

Drawing Title FOUNDATION DETAILS/SECTIONS	Project Title REPLACE ADMINISTRATION AND MAINTENANCE BUILDING AND SITE IMPROVEMENTS	Date 07/01/2011
Approved: Director, Office of Construction Management	Building Number Checked J. LEVAR	Project No. 906CM3009
Approved: Director, Project Management Service	Drawn J. RIECK	DRAWING NO. S-1001-4.1
	Location EAGLE POINT NATIONAL CEMETERY 2763 RILEY ROAD EAGLE POINT, OR 97524	Dwg. 81 Of 181