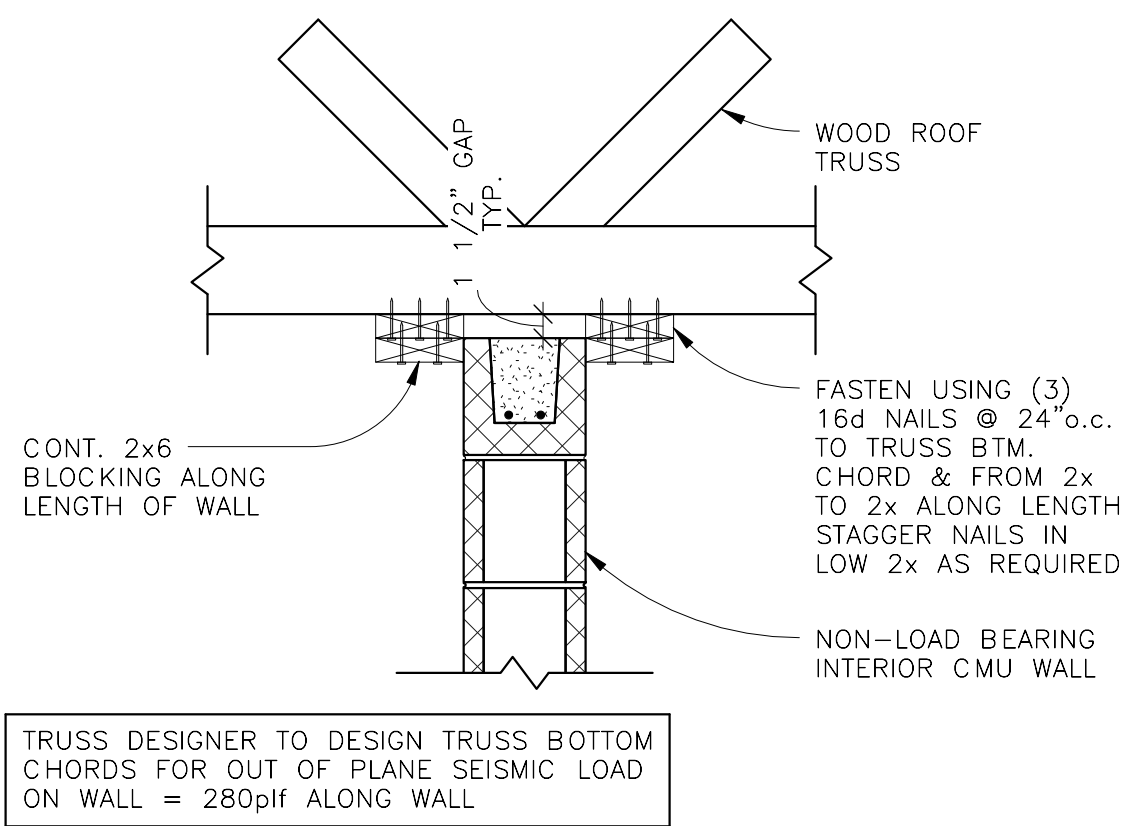
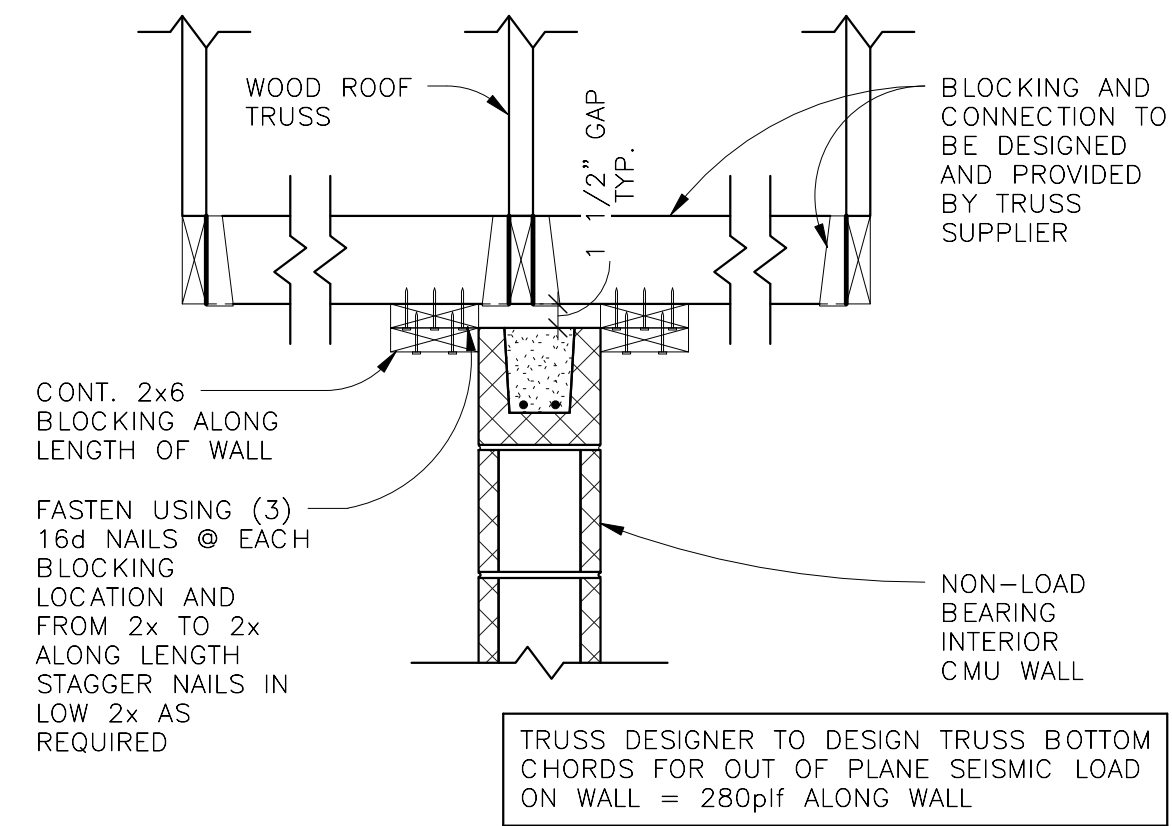


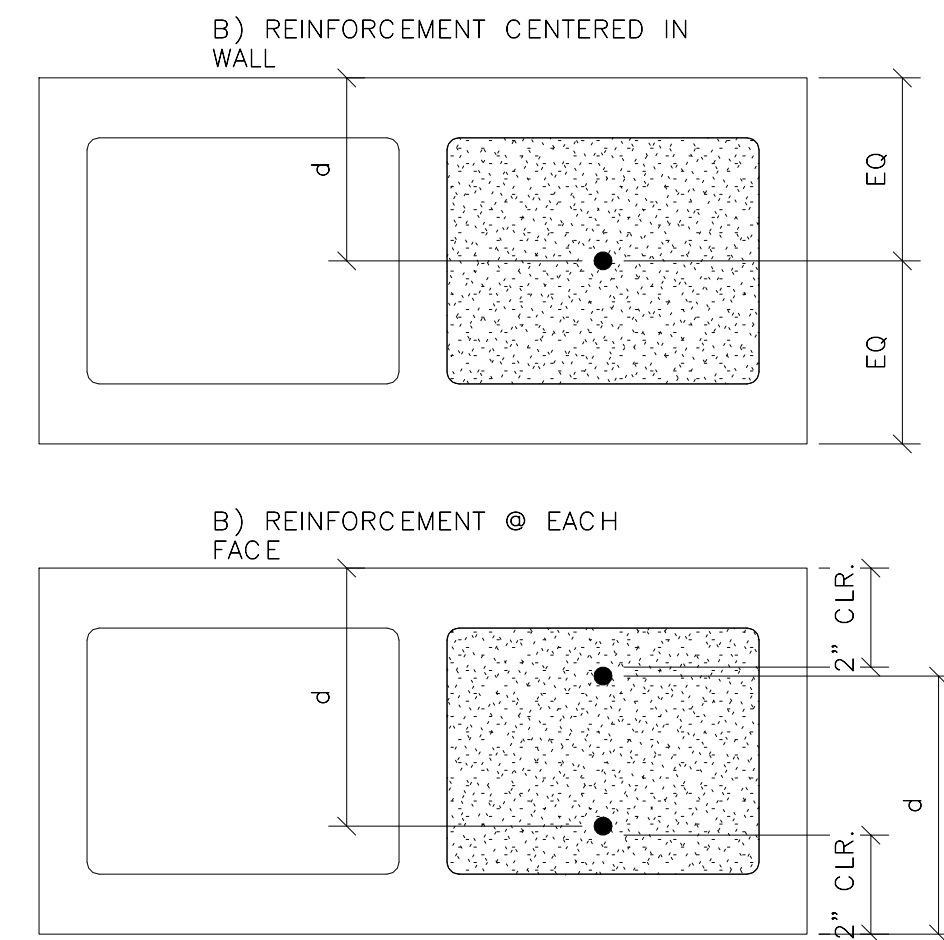
7 PLAN DETAIL
3/4" = 1'-0"



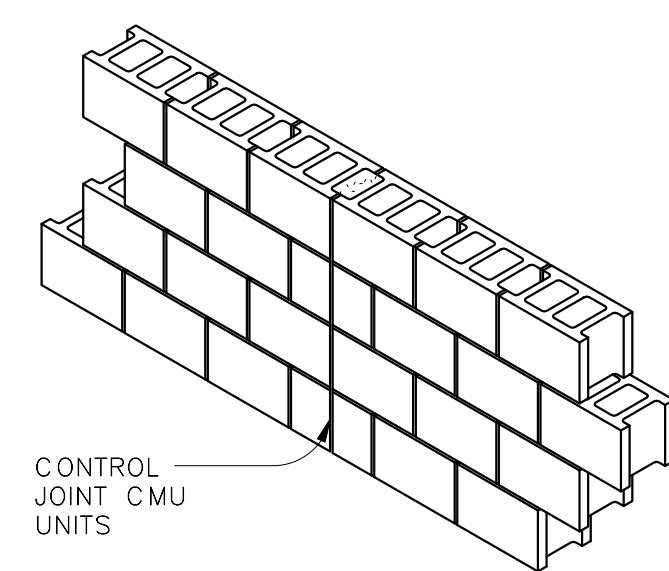
5 DETAIL
1" = 1'-0"



6 DETAIL
1" = 1'-0"

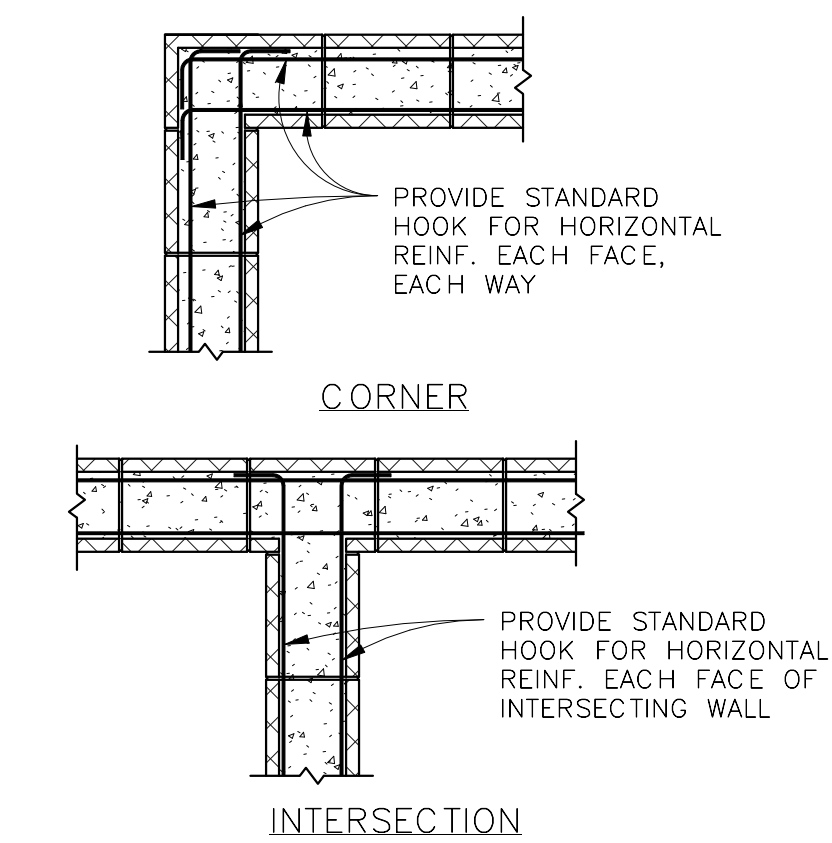


1 CMU WALL VERT REINF PLACEMENT
3" = 1'-0"

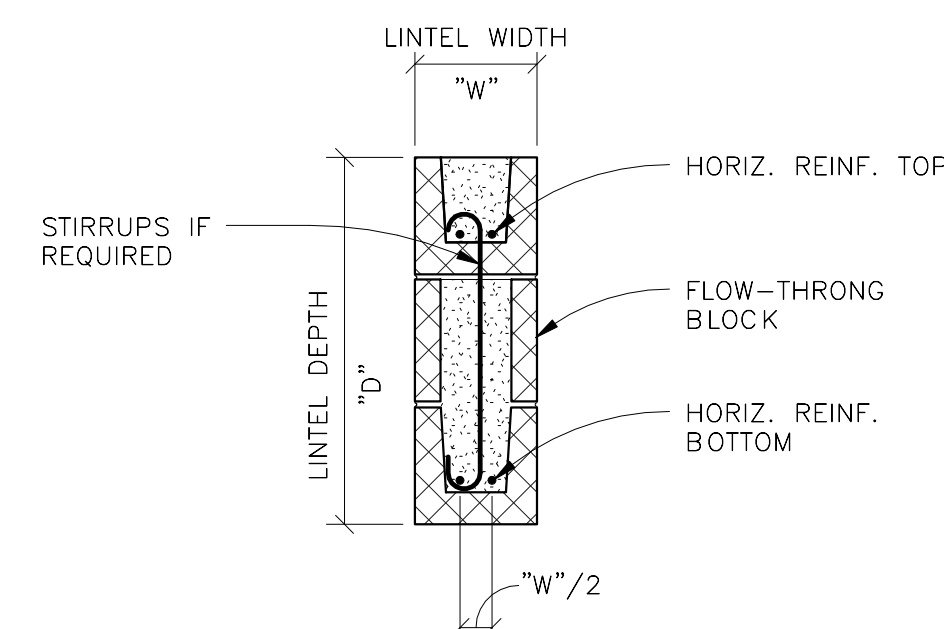


- NOTE:
- SEE ARCH. DRAWINGS FOR CMU WALL CONTROL JOINT LAYOUT
 - DISCONTINUE HORIZ. WALL JOINT REINF. @ CONTROL JOINT TYP. DO NOT DISCONTINUE BOND BEAM REINF.

2 TYP CMU WALL CONTROL JOINT
1/2" = 1'-0"



3 TYP BOND BEAM CORNER REINF
1/2" = 1'-0"



SEE SCHEDULE FOR LINTEL INFORMATION

4 CMU LINTEL DETAIL
1" = 1'-0"

CMU WALL SCHEDULE					
MARK	NOMINAL THICKNESS	VERT. REINF.	HORIZ. JOINT REINF. SPACING	VERT. BAR SPLICE/LAP LENGTH	NOTES
MW1	8"	#5 @ 48"o.c.	9 GA. LADUR @ 16"o.c.	26"	
MW2	8"	#5 @ 8"o.c.	9 GA. LADUR @ 16"o.c.	26"	PROVIDE BARS AT SPACING INDICATED OVER 24" WIDTH AT GIRDER TRUSS BEARING LOCATIONS.
MW3	8"	#5 @ 8"o.c.	9 GA. LADUR @ 16"o.c.	34"	
MW4	12"	#6 @ 48"o.c.	9 GA. LADUR @ 16"o.c.	34"	
MW6	VARIES, SEE ARCH.	#5 @ 48"o.c.	9 GA. LADUR @ 16"o.c.	26"	INTERIOR NON-BEARING CMU WALLS-PROVIDE BOND BEAM AT TOP OF WALL TYP. w/ (1) #4 CONT.

SCHEDULE NOTES:

- FACE SHELL MORTAR BEDDING SHALL BE PROVIDED TYPICAL.
- WALLS SHALL BE GROUTED AT REINFORCING LOCATIONS ONLY, U.N.O. ON PLAN.
- PROVIDE 6" MINIMUM LAP SPLICE FOR JOINT REINFORCING.
- IN ADDITION TO THE REINF. SPECIFIED ABOVE, PROVIDE (1) #5 BAR CONTINUOUS VERTICAL AT ALL CORNERS AND AT EACH JAMB OF ALL MASONRY OPENINGS. CELLS NEED NOT HAVE MORE THAN 1 BAR PRESENT UNLESS SPECIFICALLY INDICATED AS SUCH ON PLAN.
- AT GIRDER TRUSS BEARING LOCATIONS, PROVIDE MIN. OF (3) #5 BAR CONT. VERTICAL OVER 24" WIDTH AND GROUT SOLID FROM FOOTING TO BEAM BEARING.
- COORDINATE VERT. CONTROL JOINT LOCATIONS WITH ARCH. DRAWINGS. DO NOT EXCEED 30'-0" BETWEEN CONTROL JOINTS.
- PROVIDE A CONTINUOUS BOND BEAM AT THE TOP OF ALL CMU WALLS.
- ALL NON-BEARING MASONRY WALLS SHALL BE PROVIDED w/ VERTICAL SLIP CONNECTIONS @ THE TOP OF WALL U.N.O.
- REINFORCING IS CONTINUOUS FROM TOP OF FOOTING TO TOP OF WALL.

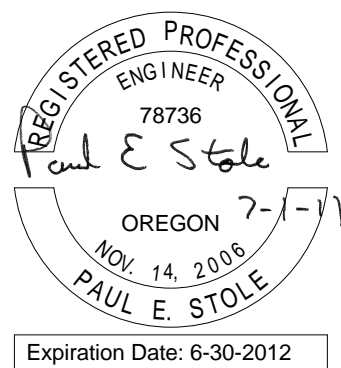
CMU WALL LINTEL SCHEDULE						
MARK	LINTEL TYPE	LINTEL WIDTH	LINTEL DEPTH	HORIZONTAL REINF.	STIRRUPS	REMARKS
L1	CMU	8"	24"	(2) #5 CONT. TOP & BOTTOM	N/A	USE WALL TOP BOND BEAM AS UPPER REINF. WHERE POSSIBLE
L3	CMU	8"	8"	(2) #5 CONT. BOTTOM	N/A	

SCHEDULE NOTES:

- CONTINUE ALL HORIZ. REINF. A MINIMUM OF 24" BEYOND EDGE OF CMU OPENING.

BID DOCUMENTS 7/1/2011

Revisions	Date



Advanced Structural Technologies
5001 American Blvd. W., Suite 800
Bloomington, MN 55437
(952) 854-9302 tel
(952) 854-9690 fax
www.astmn.com

AST

Anderson Engineering of Minnesota, LLC

13605 1st AVENUE NORTH, SUITE 100, PLYMOUTH, MN
TEL (763) 412-4000 FAX (763) 412-4090

www.ae-minn.com



NATIONAL
CEMETERY
ADMINISTRATION

Drawing Title	Project Title	Date
TYPICAL MASONRY SECTIONS/DETAILS	REPLACE ADMINISTRATION AND MAINTENANCE BUILDING AND SITE IMPROVEMENTS	07/01/2011
Approved: Director, Office of Construction Management	Building Number	Project No.
Approved: Director, Project Management Service	Checked J. LEVAR	906CM3009
	Drawn J. RIECK	DRAWING NO.
	Location EAGLE POINT NATIONAL CEMETERY 2763 RILEY ROAD EAGLE POINT, OR 97524	S-3002-6.1
		Dwg. 126 Of 181