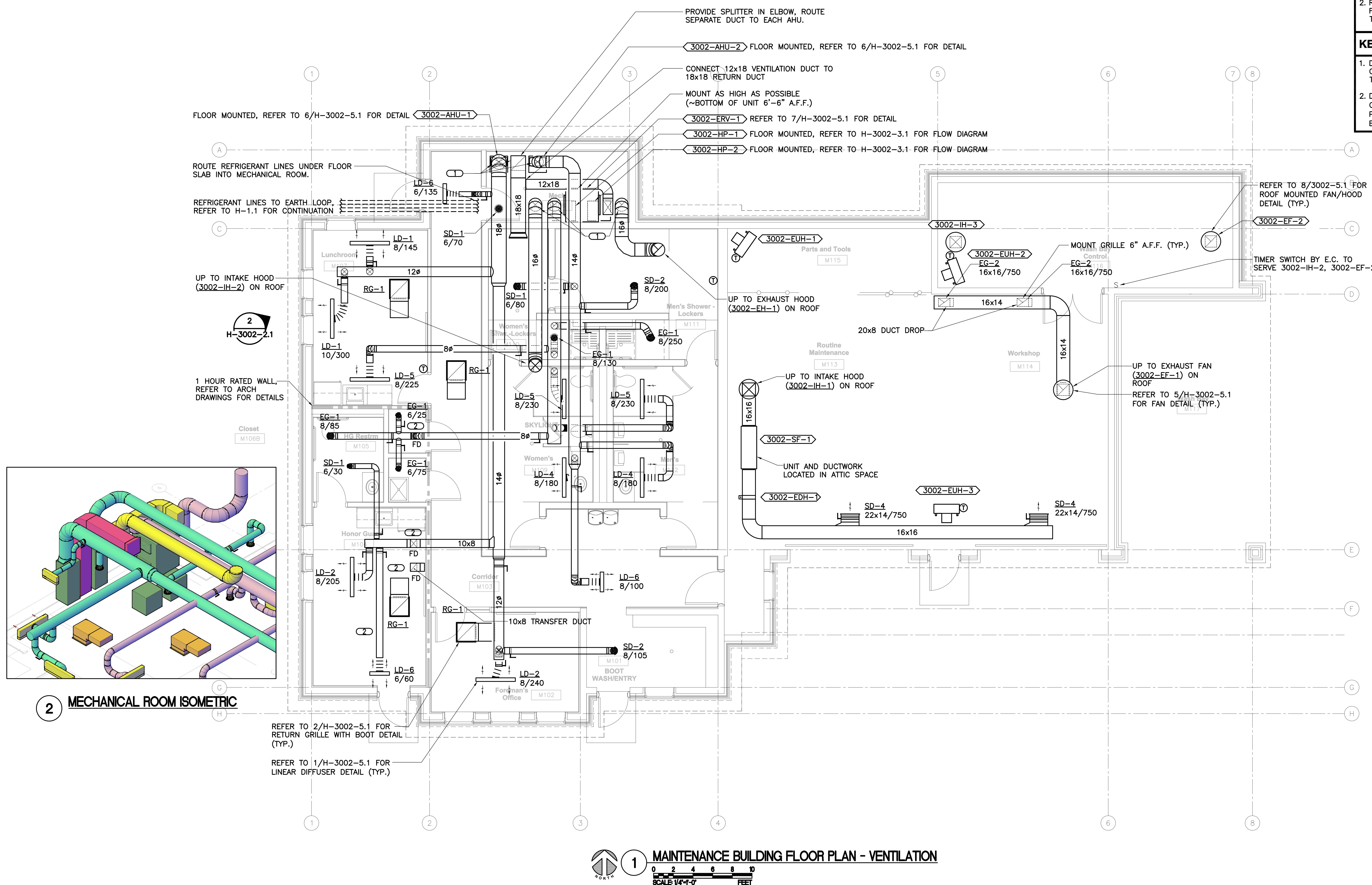


- GENERAL SHEET NOTES
1. THE SIZE OF BRANCH DUCTS TO AIR OUTLETS SHALL MATCH THEIR INLET SIZE UNLESS NOTED OTHERWISE.

2. ROUTE ALL DUCTWORK IN ATTIC SPACE. FIELD COORDINATE EXACT ROUTING WITH TRUSSES.
- KEYNOTES
1. DUCT ROUTED UP INTO ATTIC SPACE. COORDINATE EXACT LOCATION WITH TRUSSES.

2. DROP DUCT FROM ATTIC SPACE INTO CEILING SPACE (BELOW TRUSSES) AND PROVIDE FD AT GYP CEILING (LOCATE ON BOTTOM OF TRUSS) PENETRATION.



1

MAINTENANCE BUILDING FLOOR PLAN - VENTILATION

0 2 4 6 8 10
SCALE 1/4"=1'-0" FEET

BID DOCUMENTS 7/1/2011

<div>Revisions</div> <div>Date</div>	<div><div>KJW</div><div>ENGINEERING CONSULTANTS</div><div>623 25TH AVENUE ROCK ISLAND, IL 61201 309.786.0673 FAX: 309.786.5967 www.kjw.com KJW Project # 10.0356.00</div><div>STRUCTURAL / MECHANICAL / ELECTRICAL / TECHNOLOGY / MEDICAL EQUIPMENT SOLUTIONS</div></div>	<div>I hereby certify that this Plan, Specification, or Report was prepared by me, or under my direct supervision and that I am a duly licensed Professional Engineer under the laws of the State of Oregon.</div> <div>Signature: <u>Warren L. Lloyd</u></div> <div>Name: <u>Warren L. Lloyd</u></div> <div>Discipline: <u>Mechanical</u></div> <div>Oregon Registration No. <u>78701PE</u> Expiration date: <u>12.31.12</u></div> <div>Date Issued: <u>**/**/11</u></div>	<div>Anderson Engineering of Minnesota, LLC</div> <div>13605 1st AVENUE NORTH, SUITE 100, PLYMOUTH, MN 55441</div> <div>TEL (763) 412-4000 FAX (763) 412-4090</div> <div>www.ae-mn.com</div>	<div></div> <div>N ATIONAL C EMENTERY A DMINISTRATION</div>	<div>Drawing Title</div> <div>MAINTENANCE BLDG FLOOR PLAN - VENTILATION</div>	<div>Project Title</div> <div>REPLACE ADMINISTRATION AND MAINTENANCE BUILDING AND SITE IMPROVEMENTS</div>	<div>Date</div> <div>7-1-2011</div>		
					<div>Approved: Director, Office of Construction Management</div>	<div>Building Number</div> <div>3002</div>	<div>Checked</div> <div>DavBod</div>	<div>Drawn</div> <div>JamTho</div>	<div>Project No.</div> <div>906CM3009</div>
					<div>Approved: Director, Project Management Service</div>	<div>Location</div> <div>EAGLE POINT NATIONAL CEMETERY 2763 RILEY ROAD EAGLE POINT, OR 97524</div>	<div>DRAWING NO.</div> <div>H-3002-21</div>		<div>Dwg. 128 OF 181</div>