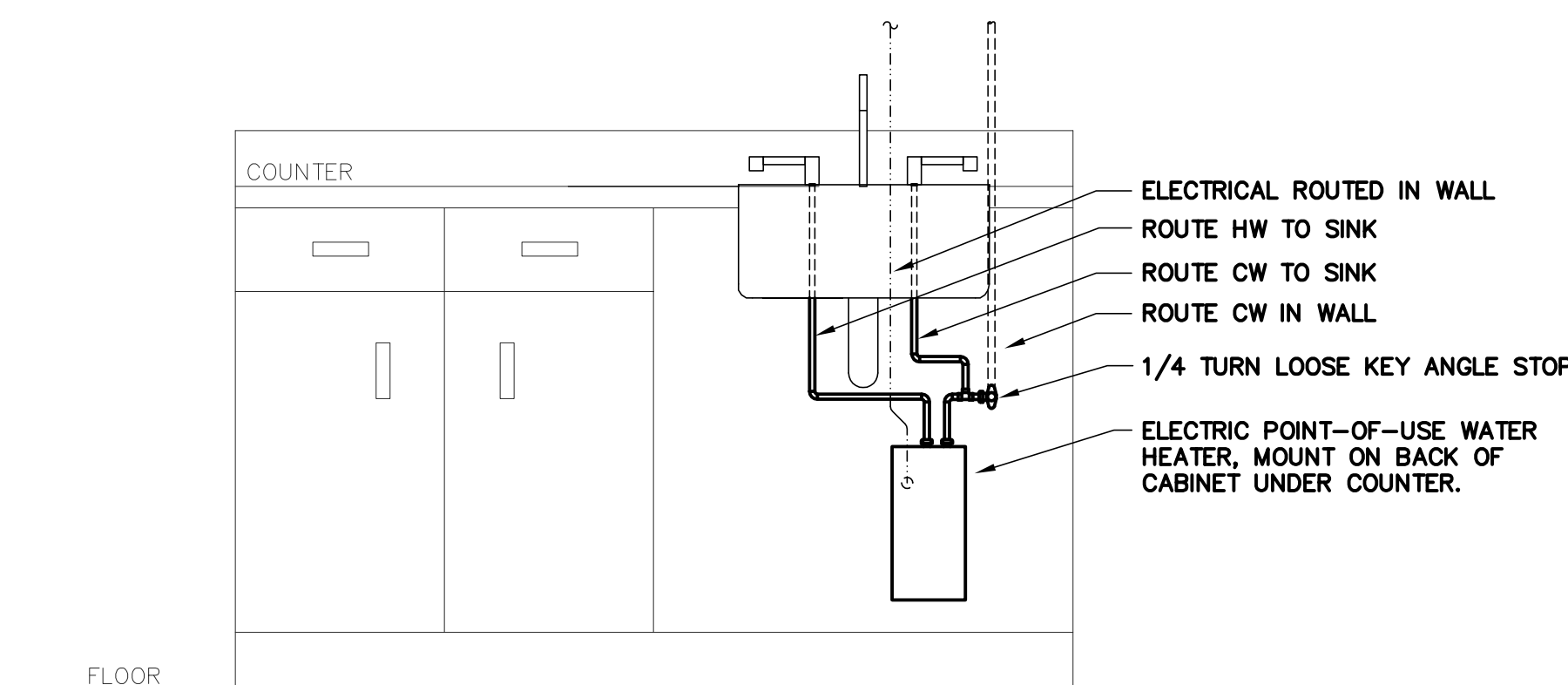
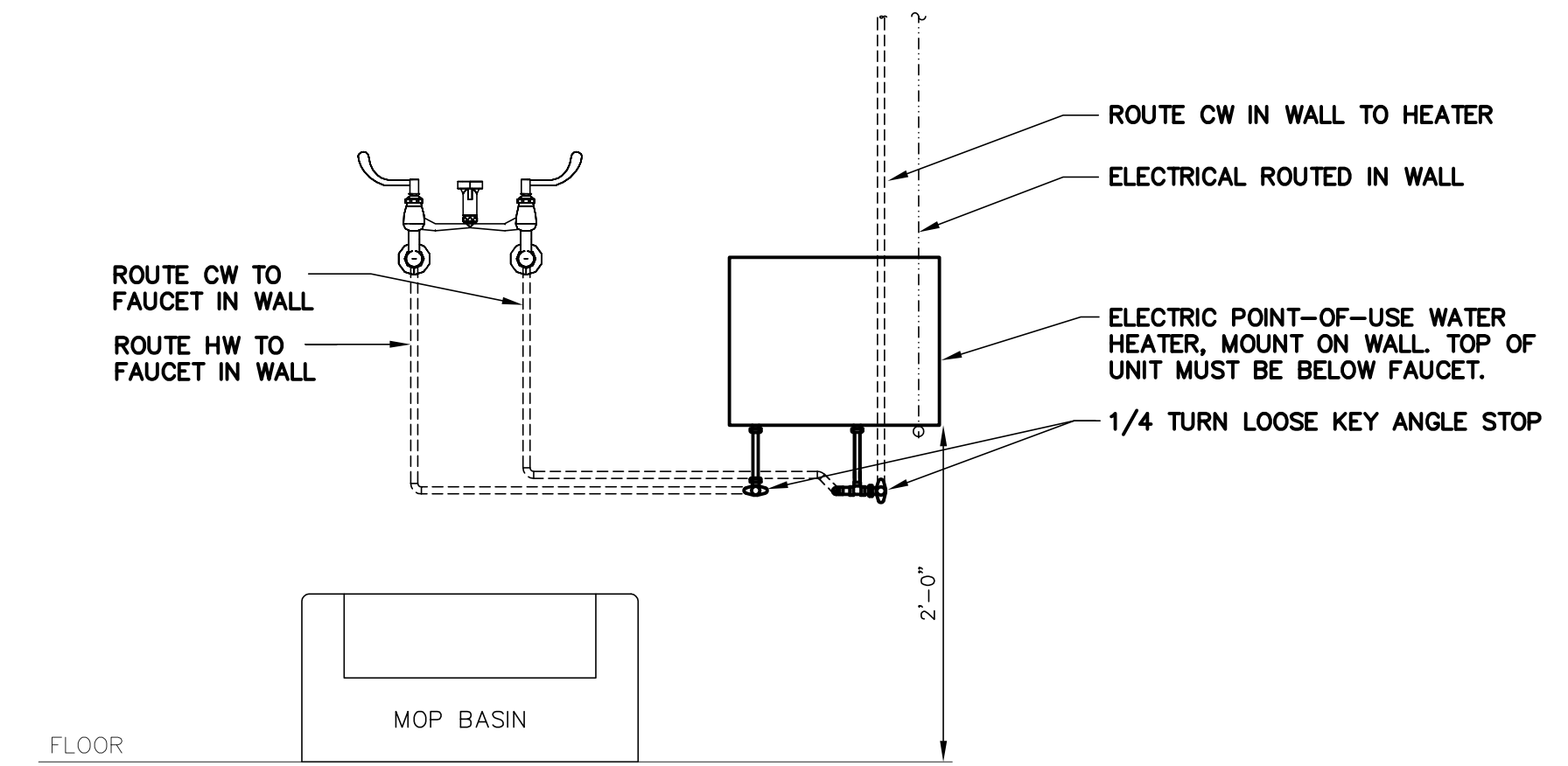


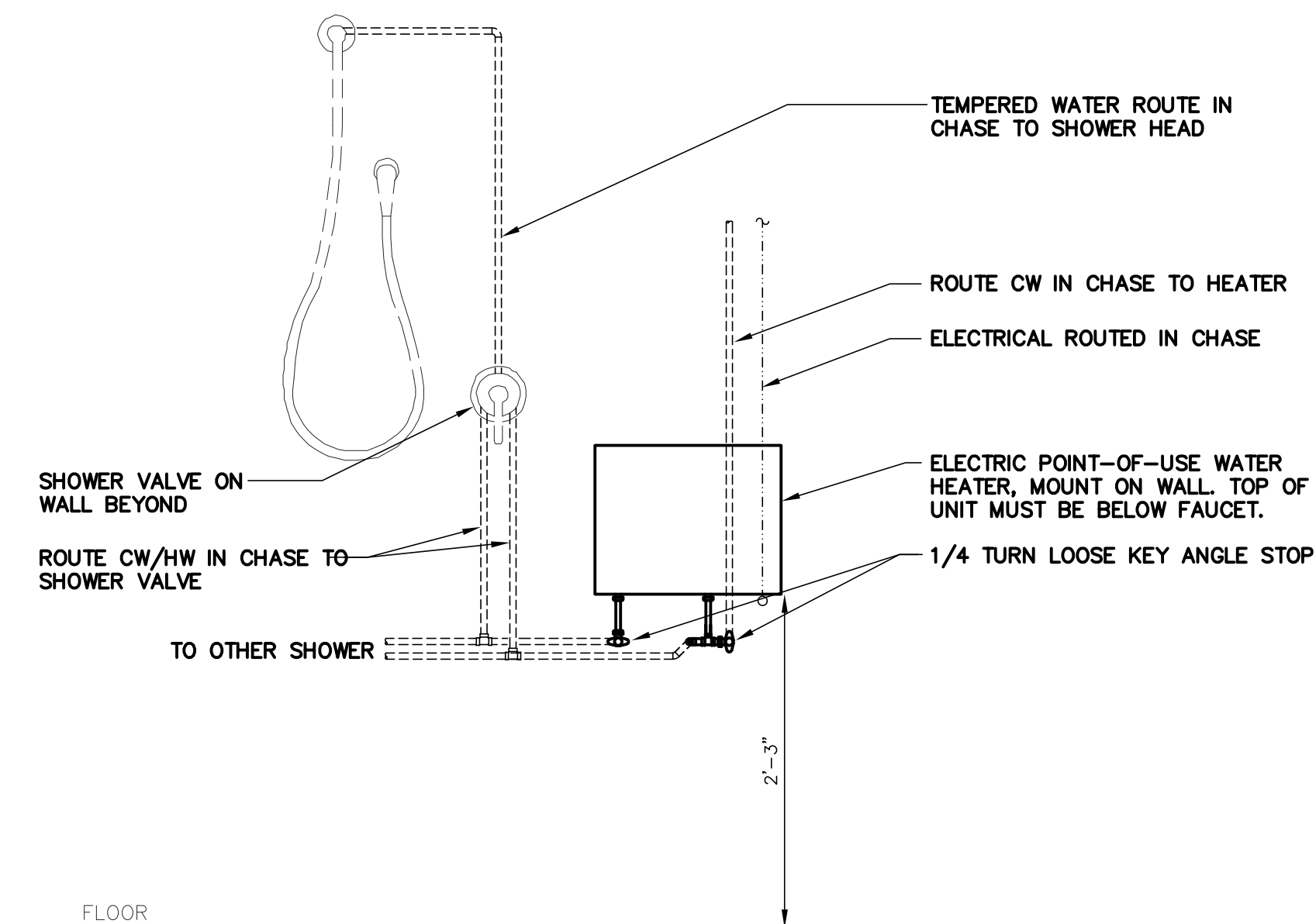
**1 LAVATORY - POINT OF USE WATER HEATER DETAIL**  
NO SCALE



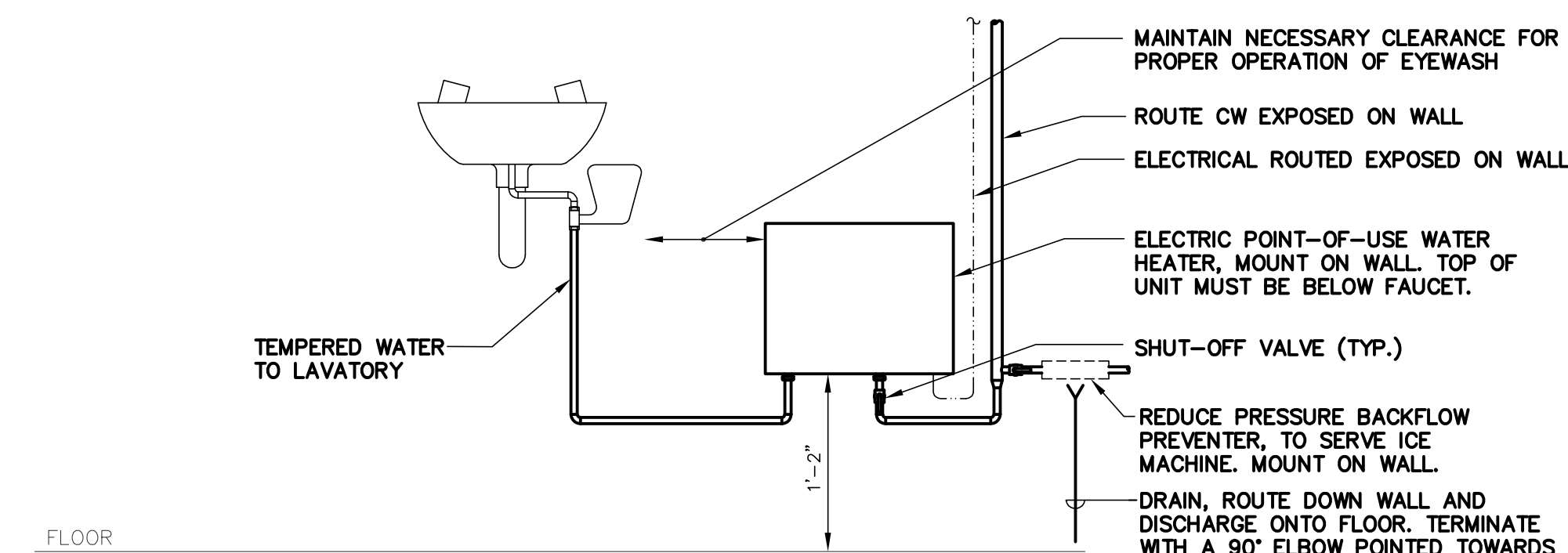
**2 SINK - POINT OF USE WATER HEATER DETAIL**  
NO SCALE



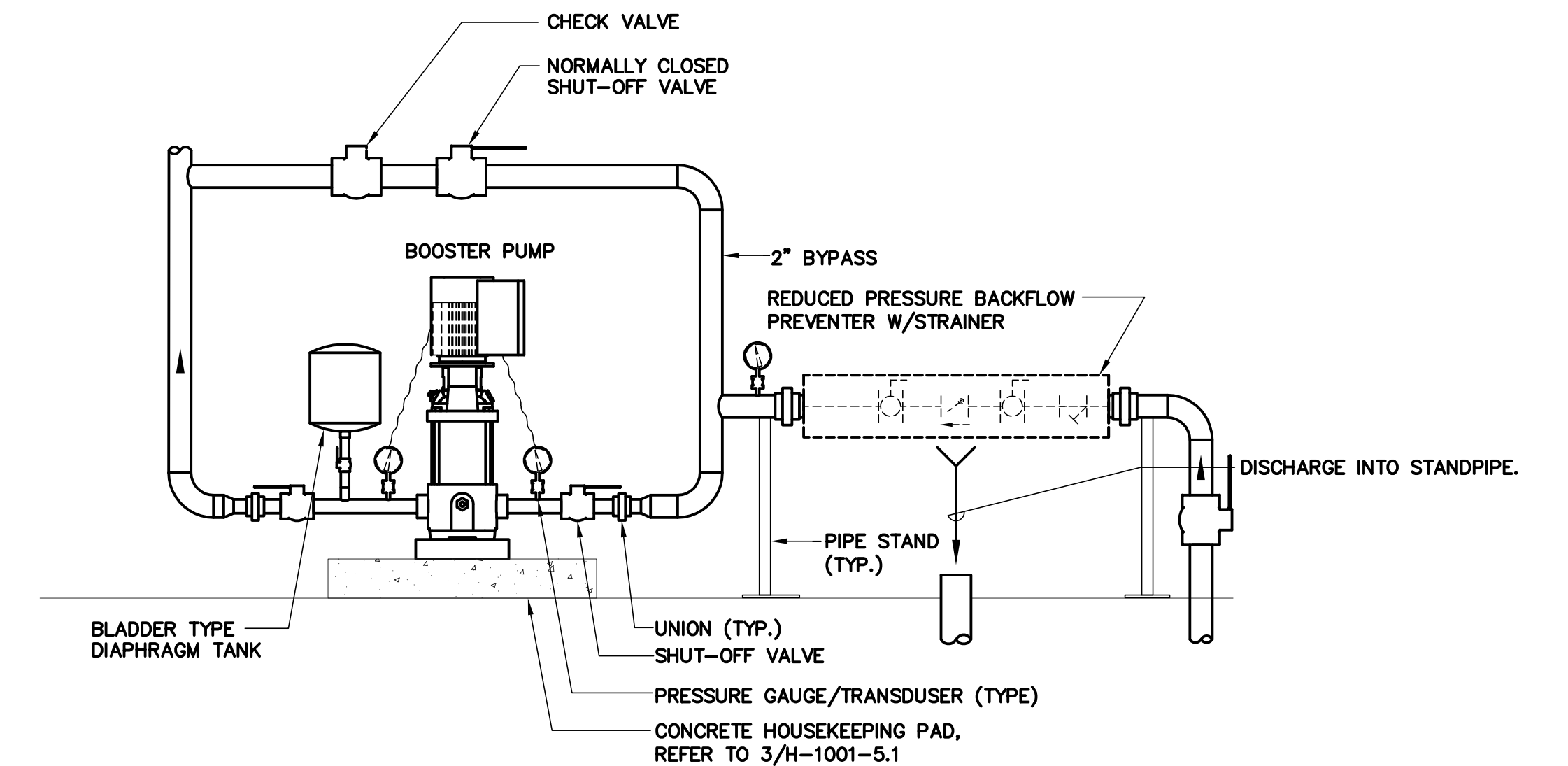
**3 MOP BASIN - POINT OF USE WATER HEATER DETAIL**  
NO SCALE



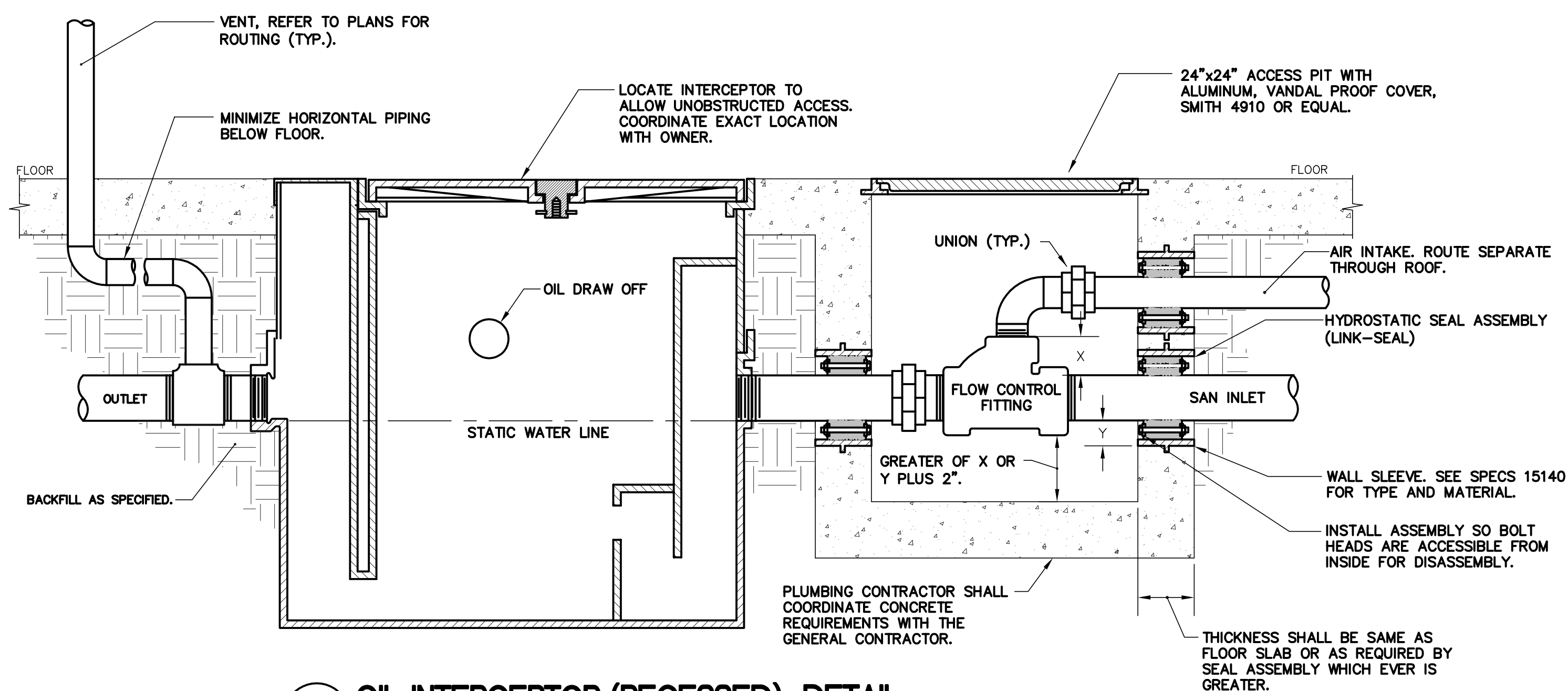
**4 SHOWER - POINT OF USE WATER HEATER DETAIL**  
NO SCALE



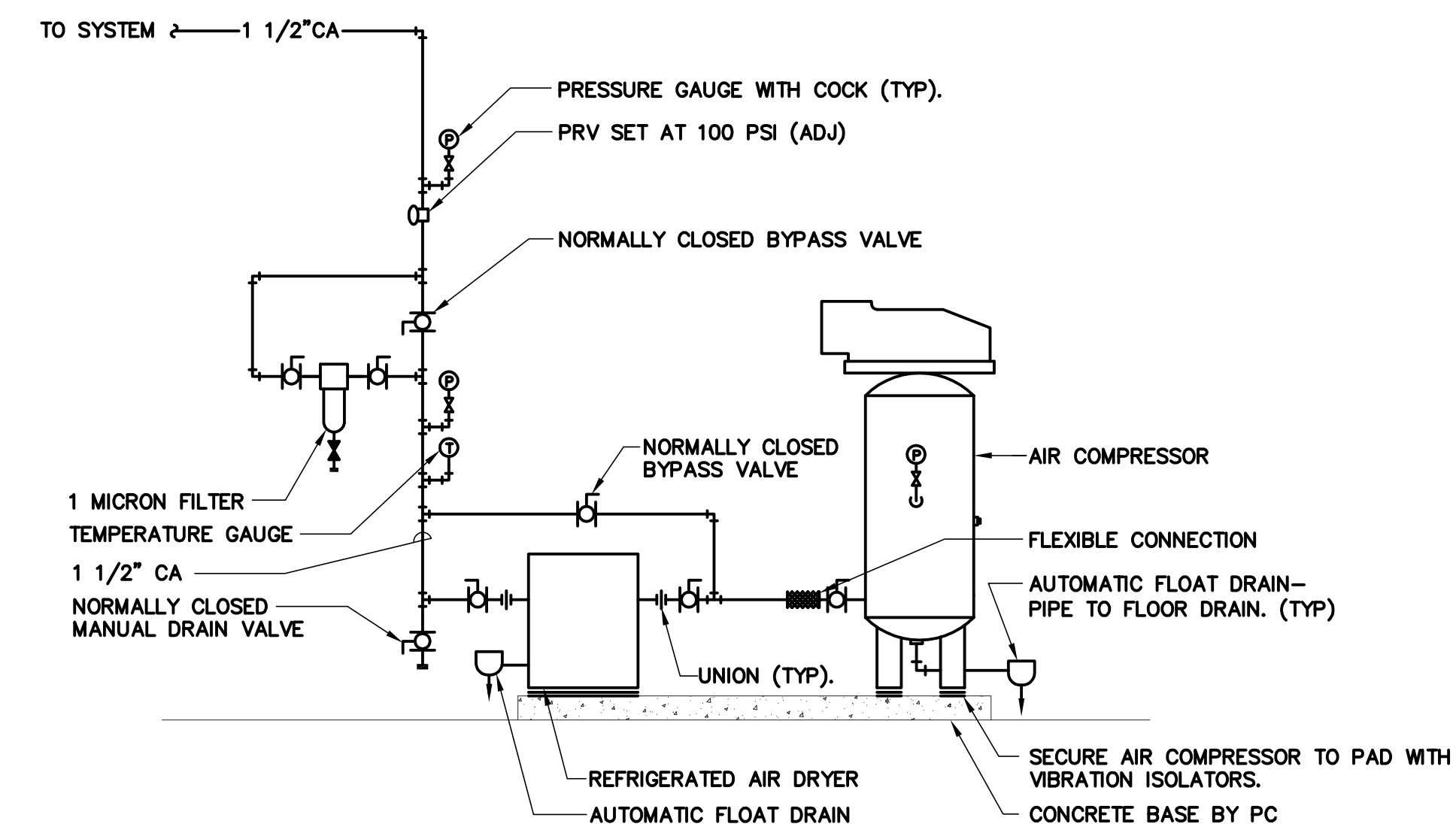
**5 EMERGENCY EYEWASH - POINT OF USE WATER HEATER DETAIL**  
NO SCALE



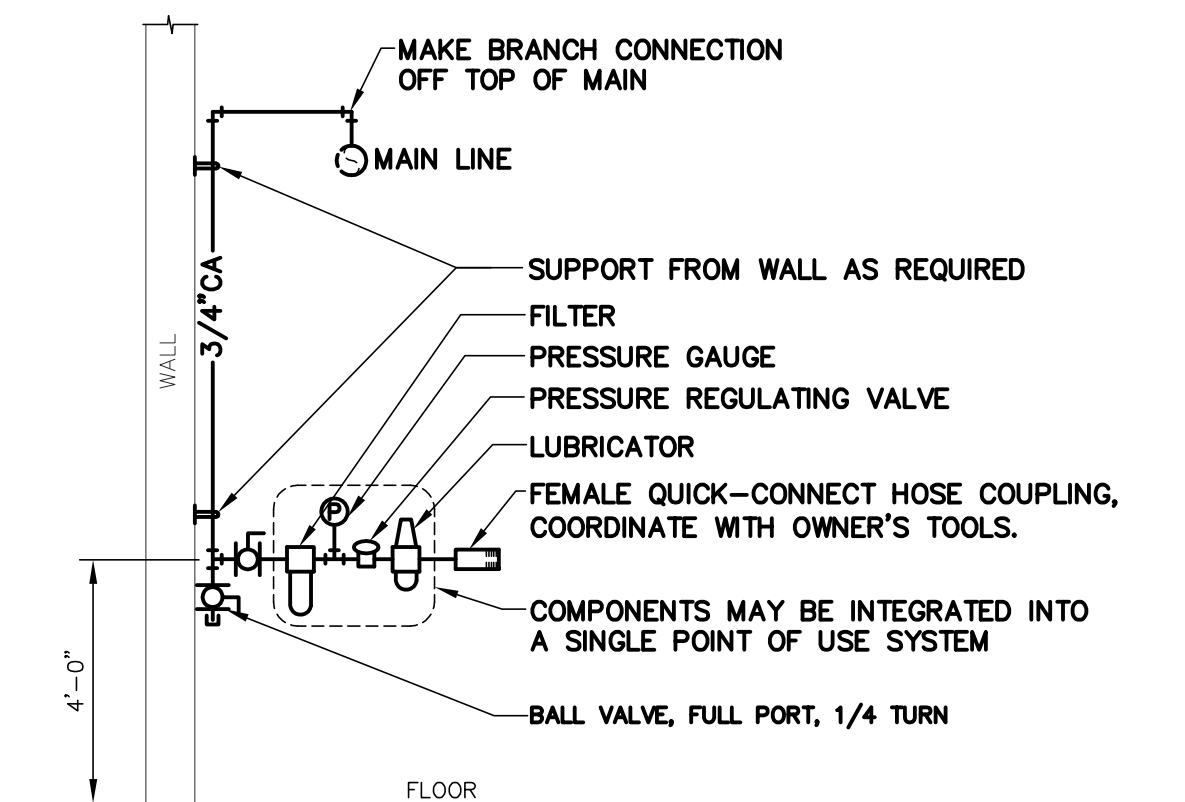
**6 PRESSURE BOOSTER SYSTEM DETAIL**  
NO SCALE



**7 OIL INTERCEPTOR (RECESSED) DETAIL**  
NO SCALE



**8 AIR COMPRESSOR DETAIL**  
NO SCALE



**9 COMPRESSED AIR TERMINAL DETAIL**  
NO SCALE

## BID DOCUMENTS 7/1/2011

<div>Revisions</div> <div>Date</div>	<div> <b>KJW</b> ENGINEERING CONSULTANTS          623 25TH AVENUE          ROCK ISLAND, IL 61201          309.786.0623 FAX: 309.786.5967          www.kjw.com          KJW Project # 10.0356.00          STRUCTURAL; MECHANICAL; ELECTRICAL;          TECHNOLOGY; MEDICAL EQUIPMENT SOLUTIONS       </div>	<div>         I hereby certify that this Plan, Specification, or Report was prepared by me, or under my direct supervision and that I am a duly licensed Professional Engineer under the laws of the State of Oregon.          Signature: <b>Warren L. Lloyd</b>          Name: <b>Warren L. Lloyd</b>          Discipline: <b>Mechanical</b>          Oregon Registration No. <b>78701PE</b> Expiration date: <b>12.31.12</b>          Date Issued: <b>**/**/11</b> </div>	<div> <b>Anderson Engineering of Minnesota, LLC</b>          13605 1st AVENUE NORTH, SUITE 100, PLYMOUTH, MN 55441          TEL (763) 412-4000 FAX (763) 412-4090          www.ae-mn.com       </div>	<div>           NATIONAL CEMETERY ADMINISTRATION       </div>	<div>         Drawing Title  <b>MAINTENANCE BLDG PLUMBING DETAILS</b>          Approved: Director, Office of Construction Management       </div>	<div>         Project Title  <b>REPLACE ADMINISTRATION AND MAINTENANCE BUILDING AND SITE IMPROVEMENTS</b>          Building Number  <b>3002</b>          Location  <b>EAGLE POINT NATIONAL CEMETERY</b>          2763 RILEY ROAD          EAGLE POINT, OR 97524       </div>	<div>         Date  <b>7-1-2011</b>          Project No.  <b>906CM3009</b>          DRAWING NO.  <b>P-3002-51</b>          Dwg. 135 OF 181       </div>
--------------------------------------	--	---	---	--	---	--	---