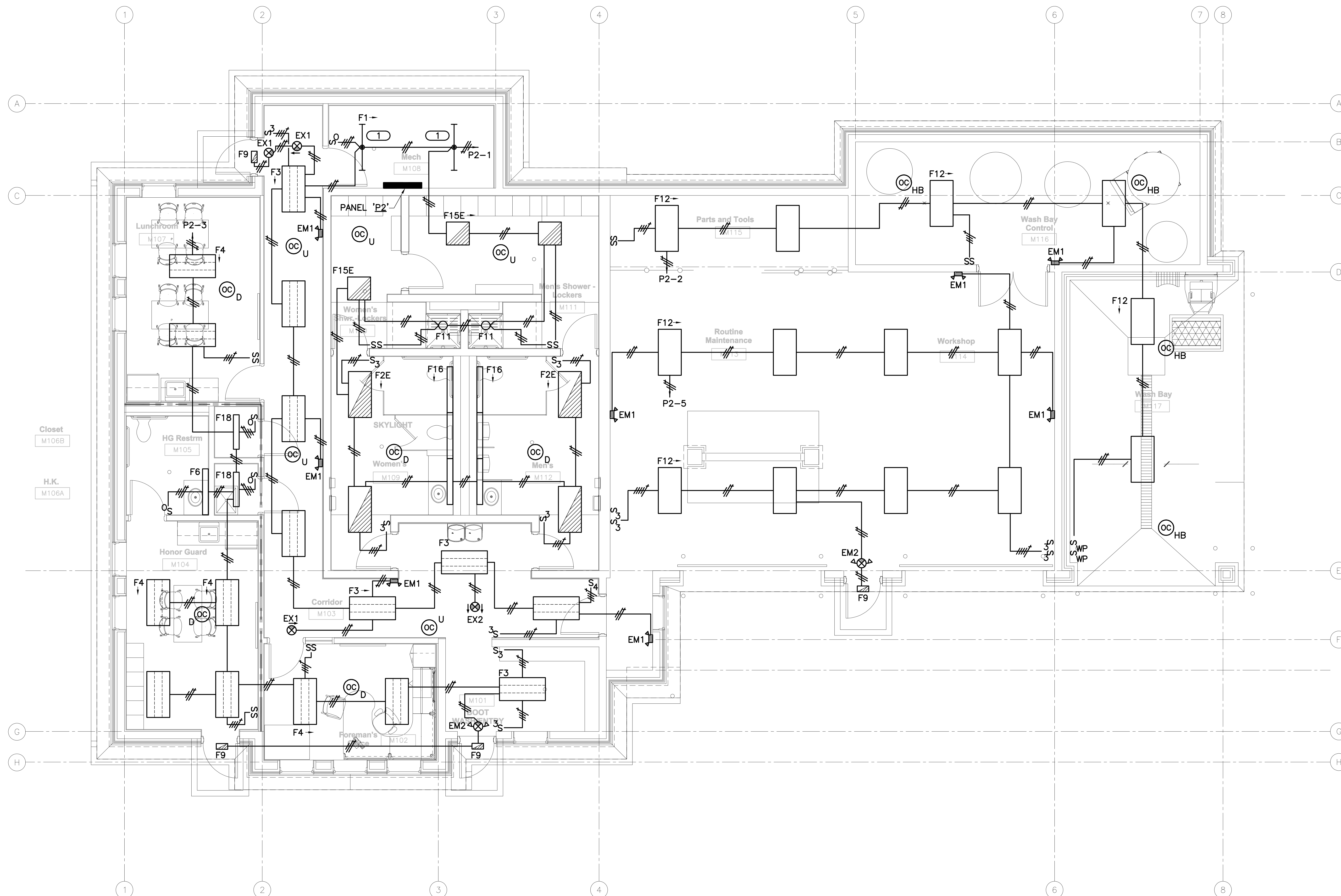


GENERAL SHEET NOTES

- REFER SHEET E-3002-0.1 FOR ELECTRICAL GENERAL NOTES, SHEET E-3002-5.1 FOR ELECTRICAL EQUIPMENT SCHEDULE AND E-3002-6.1 FOR LUMINAIRE SCHEDULE.
- REFER TO ARCHITECTURAL DRAWINGS FOR CEILING TYPES AND HEIGHTS.

KEYNOTES

- CONTRACTOR SHALL COORDINATE LOCATION OF F1 LIGHTS WITH INSTALLED DUCT WORK.



1 MAINTENANCE BLDG. FLOOR PLAN - LIGHTING
SCALE: 1/4"=1'-0"

1/4"=1'-0"
SCALE
FEET

BID DOCUMENTS 7/1/2011

Revisions	Date

KJW ENGINEERING CONSULTANTS
Experience you can build on.[™]
623 26TH AVENUE
ROCK ISLAND, IL 61201
309.786.0673 FAX: 309.786.5967
www.kjw.com
KJW Project # 10.0356.00
STRUCTURAL / MECHANICAL / ELECTRICAL /
TECHNOLOGY / MEDICAL EQUIPMENT SOLUTIONS

I hereby certify that this Plan, Specification, or Report was prepared by me, or under my direct supervision and that I am a duly licensed Professional Engineer under the laws of the State of Oregon.
Signature: _____
Name: **Lee D. VanOpdorp**
Discipline: **Electrical**
Oregon Registration No. **78702PE** Expiration date: **06.30.12**
Date Issued: **/**/**

Anderson Engineering of Minnesota, LLC

13605 1st AVENUE NORTH, SUITE 100, PLYMOUTH, MN 55441
TEL (763) 412-4000 FAX (763) 412-4090
www.ae-mn.com



NATIONAL
CEMETERY
ADMINISTRATION

Drawing Title MAINTENANCE BLDG. FLOOR PLAN - LIGHTING	Project Title REPLACE ADMINISTRATION AND MAINTENANCE BUILDING AND SITE IMPROVEMENTS	Date 7-1-2011
Approved: Director, Office of Construction Management	Building Number 3002	Checked JOHMcG
Approved: Director, Project Management Service	Location EAGLE POINT NATIONAL CEMETERY 2763 RILEY ROAD EAGLE POINT, OR 97524	Drawn BRAWIT
Drawing No. E-3002-2.1		Dwg. 137 OF 181