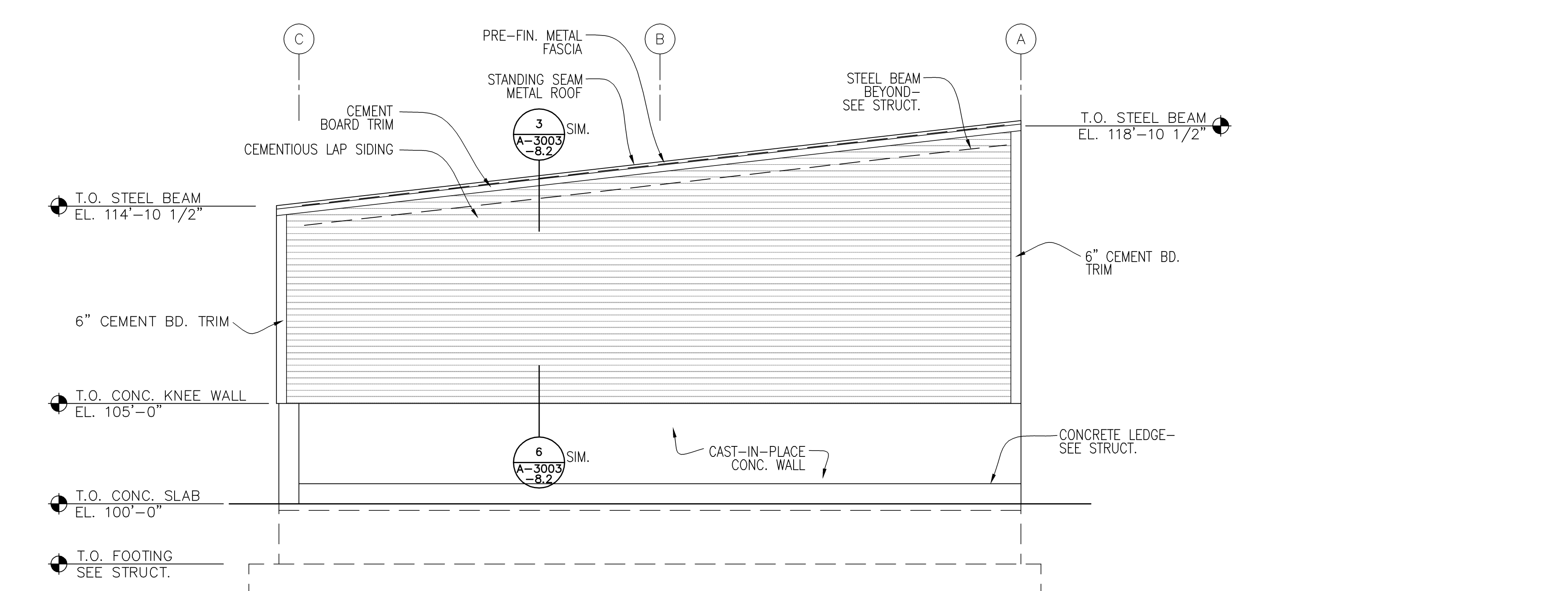
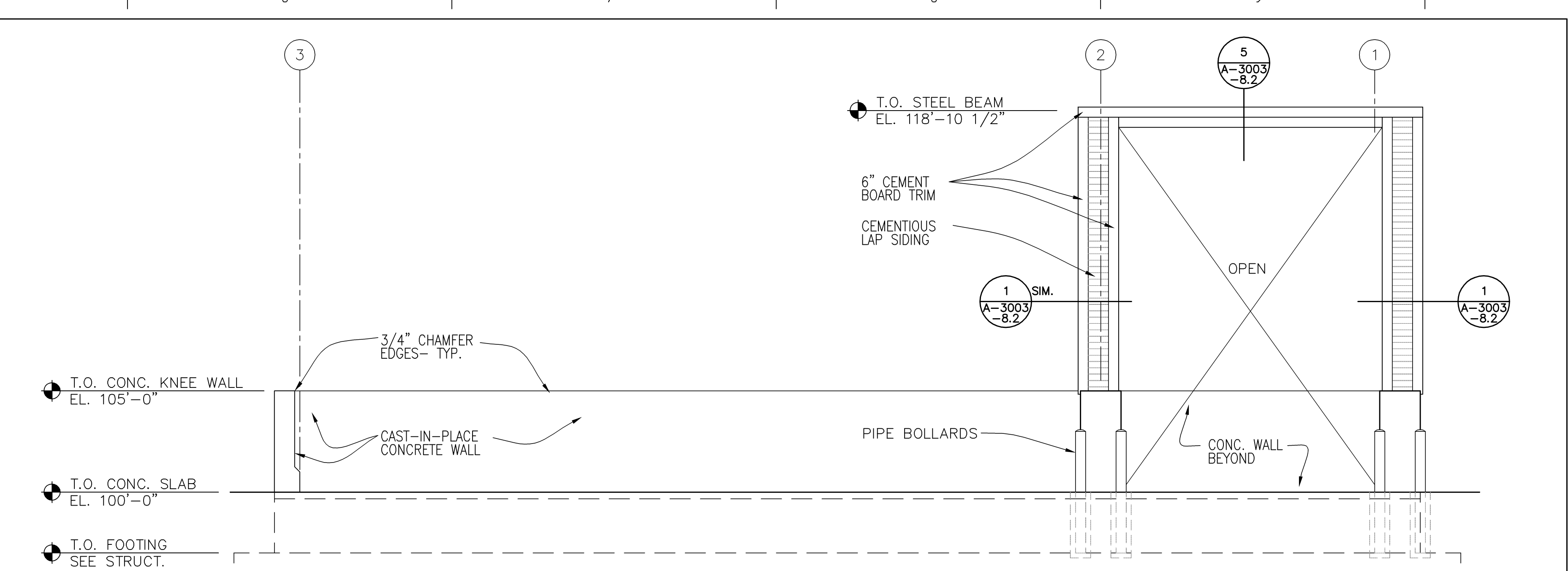


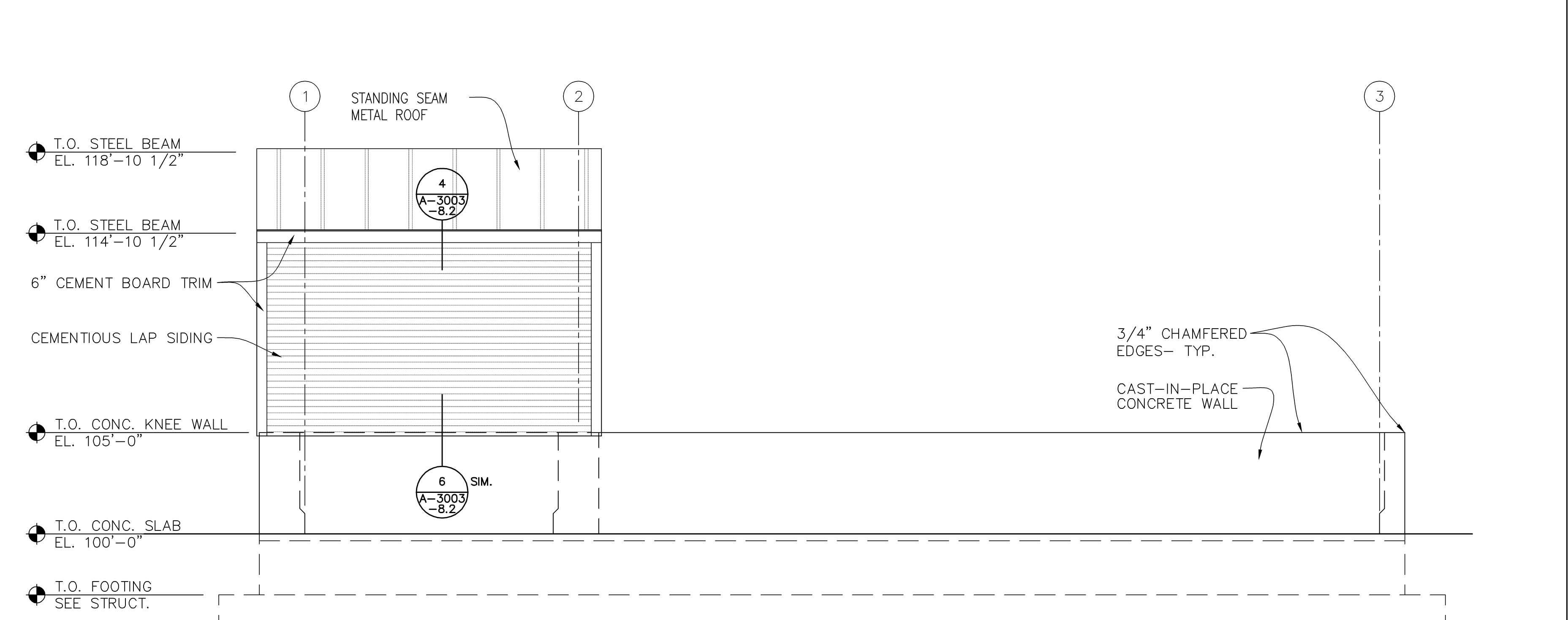
1 PLAN - STORAGE BINS
A-3003-8.1 SCALE: 1/4"=1'-0"



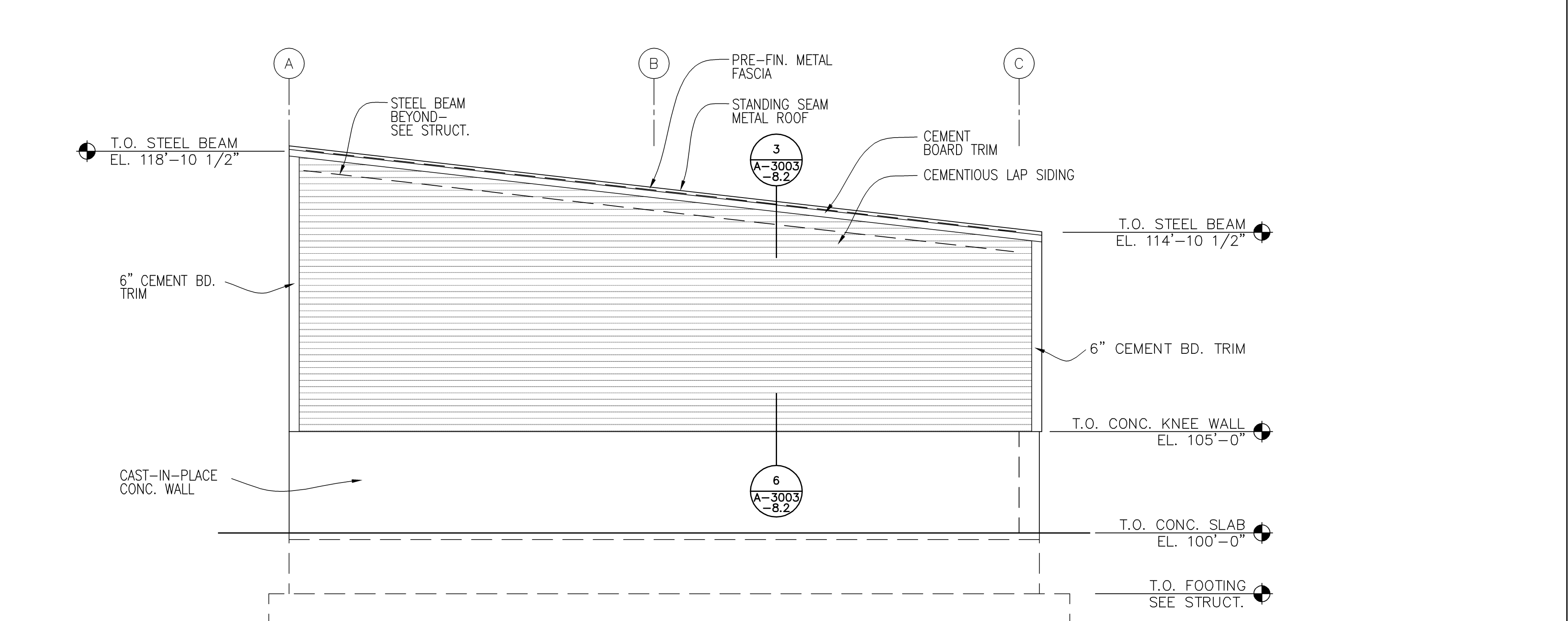
5 EAST ELEVATION - STORAGE BINS
A-3003-8.1 SCALE: 1/4"=1'-0"



2 NORTH ELEVATION - STORAGE BINS
A-3003-8.1 SCALE: 1/4"=1'-0"



3 SOUTH ELEVATION - STORAGE BINS
A-3003-8.1 SCALE: 1/4"=1'-0"



4 WEST ELEVATION - STORAGE BINS
A-3003-8.1 SCALE: 1/4"=1'-0"

BID DOCUMENTS 7/1/2011

Revisions	Date

I HEREBY CERTIFY THAT THIS PLAN, SPECIFICATION, OR REPORT WAS PREPARED BY ME OR UNDER MY DIRECT SUPERVISION AND THAT I AM A DULY LICENSED ARCHITECT UNDER THE LAWS OF THE STATE OF MINNESOTA.

PRINT NAME: CHARLES J. SCOTT, AIA

SIGNATURE: *CSA*

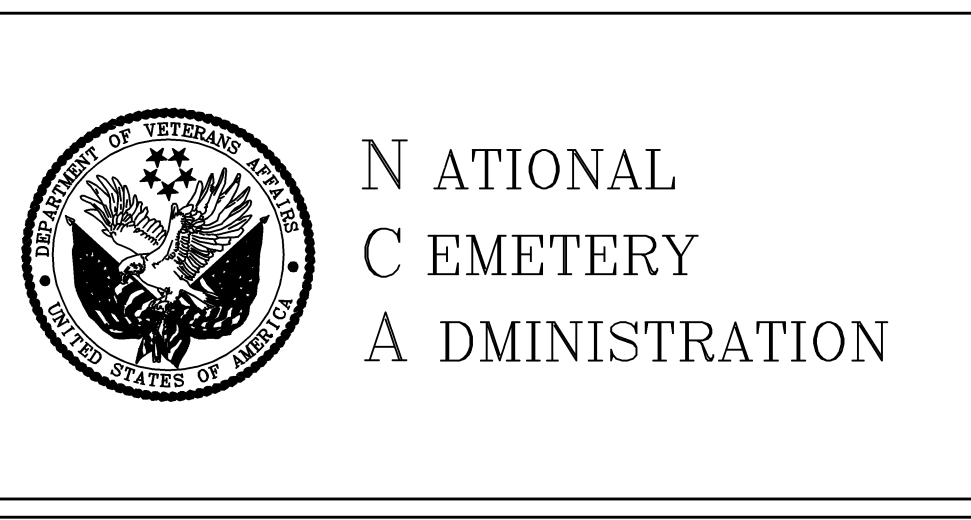
DATE: 7/1/2011 LICENSE # 18675

Anderson Engineering of Minnesota, LLC

19805 1st AVENUE NORTH, SUITE 100, PLYMOUTH, MN 55441

TEL (763) 412-4000 FAX (763) 412-4090

www.ae-mn.com



Drawing Title
STORAGE BIN PLAN AND ELEVATIONS

Approved: Director, Office of Construction Management

Approved: Director, Project Management Service

Project Title
REPLACE ADMINISTRATION AND MAINTENANCE BUILDING AND SITE IMPROVEMENTS

Building Number
Checked GRJ
Drawn AMT/PSH

Location
EAGLE POINT NATIONAL CEMETERY
2763 RILEY ROAD
EAGLE POINT, OR 97524

Date
7-1-2011

Project No.
906CM3009

DRAWING NO.
A-3003-8.1

Dwg. 156 OF 181