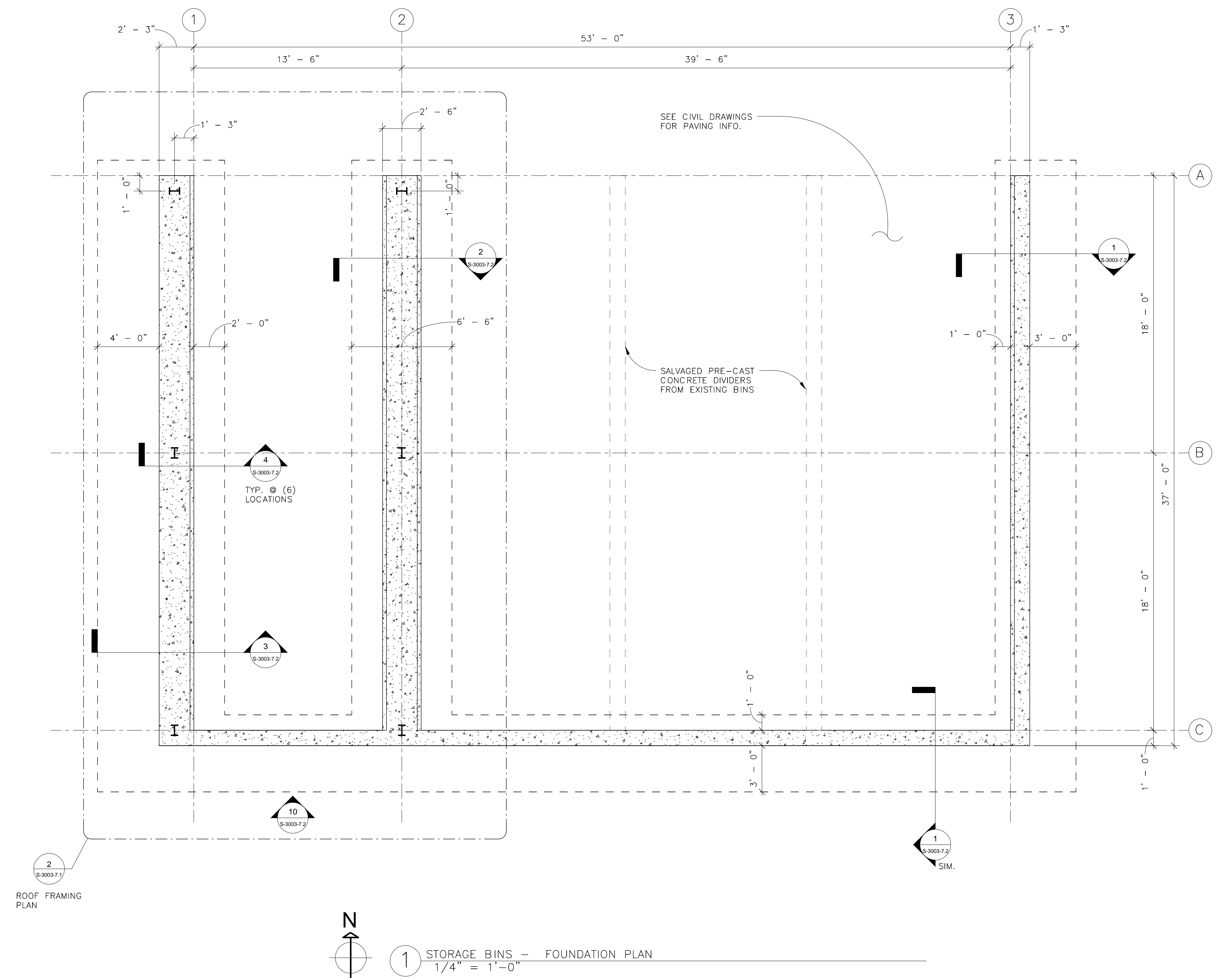


ROOF FRAMING PLAN NOTES:

- TOP OF ROOF DECK ELEVATION (TDE) (+0) = 115'-0" U.N.O. ON PLAN. SLOPE ROOF UNIFORMLY BETWEEN REFERENCE POINTS PROVIDED.
- SEE ARCHITECTURAL DRAWINGS FOR ADDITIONAL INFORMATION ON ROOF ASSEMBLY AND DETAILS. STRUCTURAL DECK SHALL BE 1.5 TYPE B - 22GA. METAL DECK.
- ROOF DECK SHALL BE WELDED TO SUPPORTS USING A 3/4" PATTERN WITH A MINIMUM OF (2) #10 TEK SCREW SIDELAP FASTENERS PER DECK SPAN. SEE DETAILS 1 & 2/S-3003-7.2 FOR ADDITIONAL INFORMATION.
- ON PLAN DENOTES A MOMENT FRAME CONNECTION. SEE DETAIL 11/S-3003-7.2 FOR CONNECTION INFORMATION.
- ALL STRUCTURAL STEEL ON STORAGE BIN SHALL BE HOT DIP GALVANIZED.



FOUNDATION PLAN NOTES:

- TOP OF SLAB ELEVATION (TSE) = 100'-0" U.N.O. ON PLAN. REFERENCED FROM DATUM ELEVATION 1566.52.
- SEE CIVIL DRAWINGS FOR SLAB ON GRADE SLOPES, THICKNESS AND REINFORCING.
- TOP OF FOOTING ELEVATION (TFE) = 97'-0" TYP. U.N.O.
- FOOTINGS SHALL BE 1'-6" DEEP AND REINFORCED WITH #5 BARS SPACED AT 12" O.C. EACH WAY, TOP AND BOTTOM OF THE FOOTING. SEE THE FOUNDATION DETAILS ON SHEET S-3003-7.2 FOR ADDITIONAL INFORMATION.
- COORDINATE SUBGRADE PREPARATION AND RETAINING WALL BACKFILL AND DRAINAGE WITH CIVIL DRAWINGS AND CONSTRUCT IN ACCORDANCE WITH REFERENCED GEOTECHNICAL REPORT.
- TOP OF FOUNDATION/RETAINING WALL ELEVATION (TWE) = 105'-0" TYP. U.N.O.

Column Schedule			
Mark	Size	Base Plate	Remarks
C1	W8X18	PL 1" x 11" x 1'-2"	

BID DOCUMENTS 7/1/2011

Revisions	Date



Advanced Structural Technologies
5001 American Blvd. W., Suite 800
Bloomington, MN 55437
(952) 854-9302 tel
(952) 854-9690 fax
www.astmn.com



Anderson Engineering of Minnesota, LLC

13605 1st AVENUE NORTH, SUITE 100, PLYMOUTH, MN
TEL (763) 412-4000 FAX (763) 412-4090

www.ae-mn.com



NATIONAL
CEMETERY
ADMINISTRATION

Drawing Title STORAGE BINS FOUNDATION / ROOF FRAMING PLANS	Project Title REPLACE ADMINISTRATION AND MAINTENANCE BUILDING AND SITE IMPROVEMENTS	Date 07/01/2011
Approved: Director, Office of Construction Management J. LEVAR	Building Number EAGLE POINT NATIONAL CEMETERY	Project No. 906CM3009
Approved: Director, Project Management Service	Checked J. LEVAR	Drawn J. RIECK
	Location 2763 RILEY ROAD EAGLE POINT, OR 97524	DRAWING NO. S-3003-7.1
		Dwg. 165 OF 181