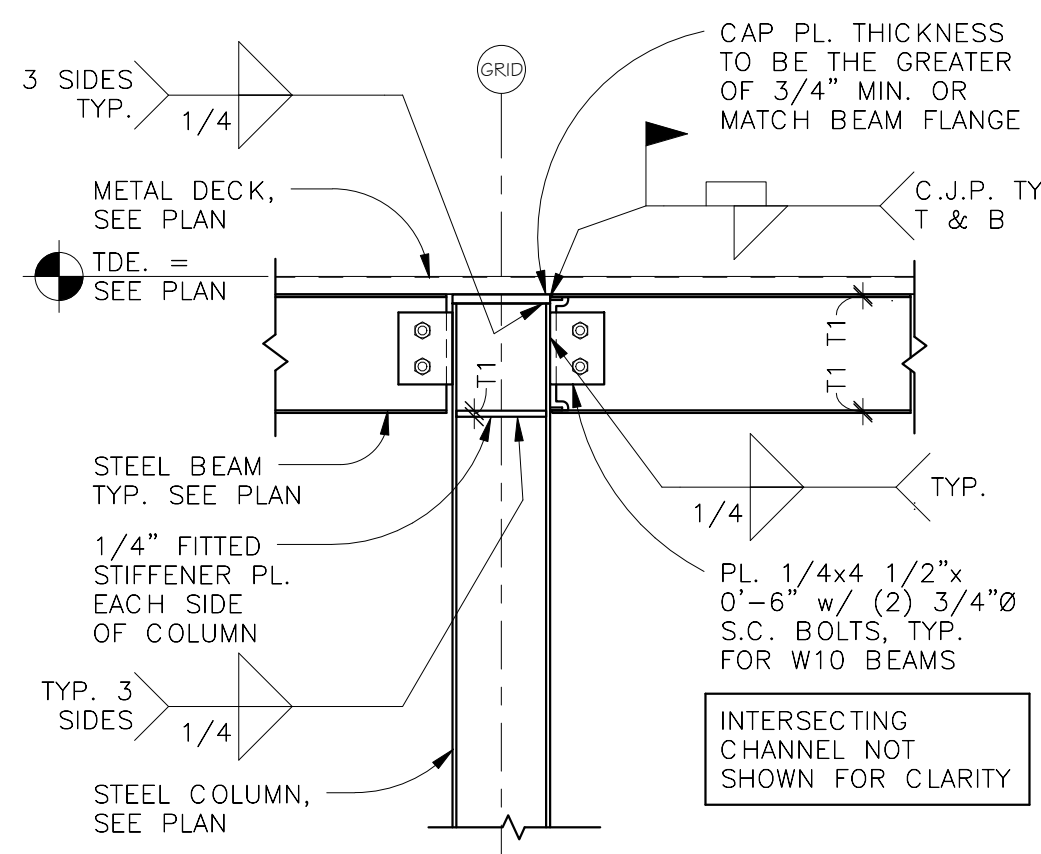
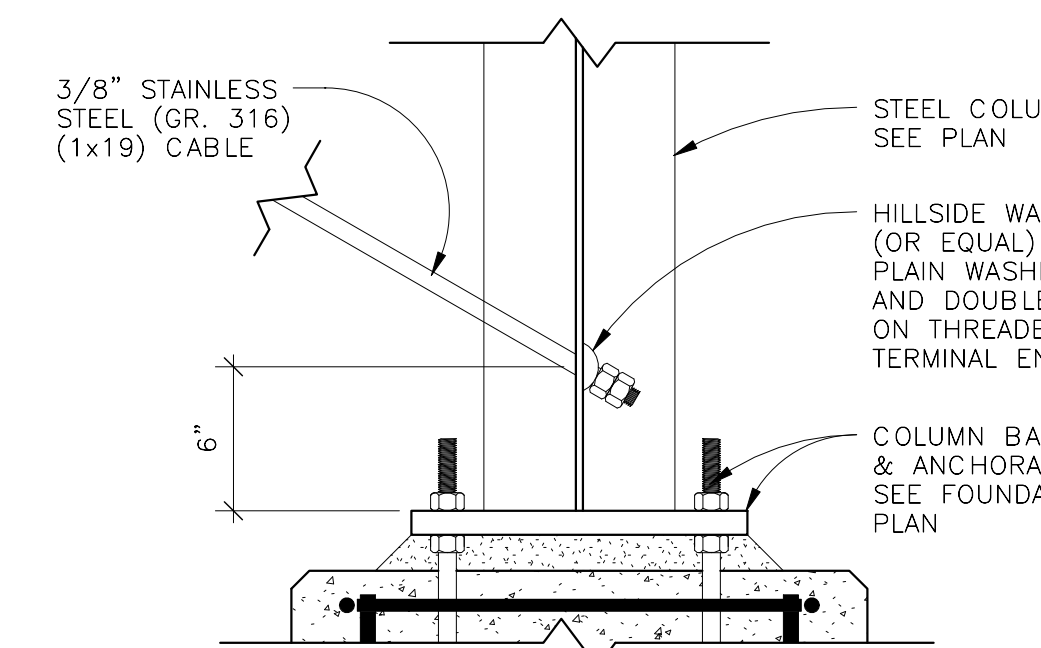


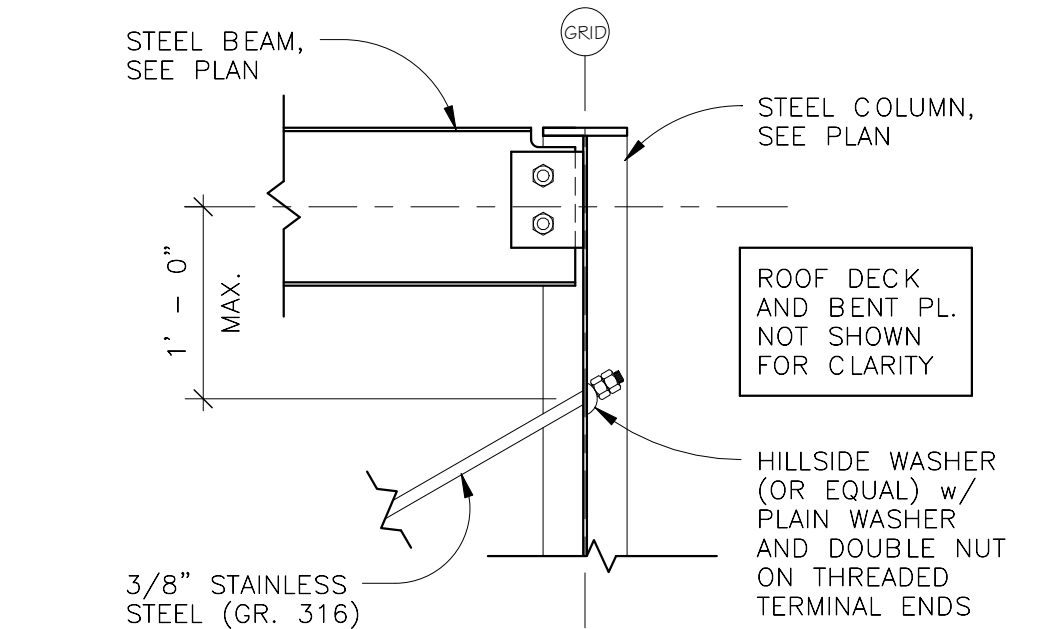
10 SECTION @ X-BRACING
3/8" = 1'-0"



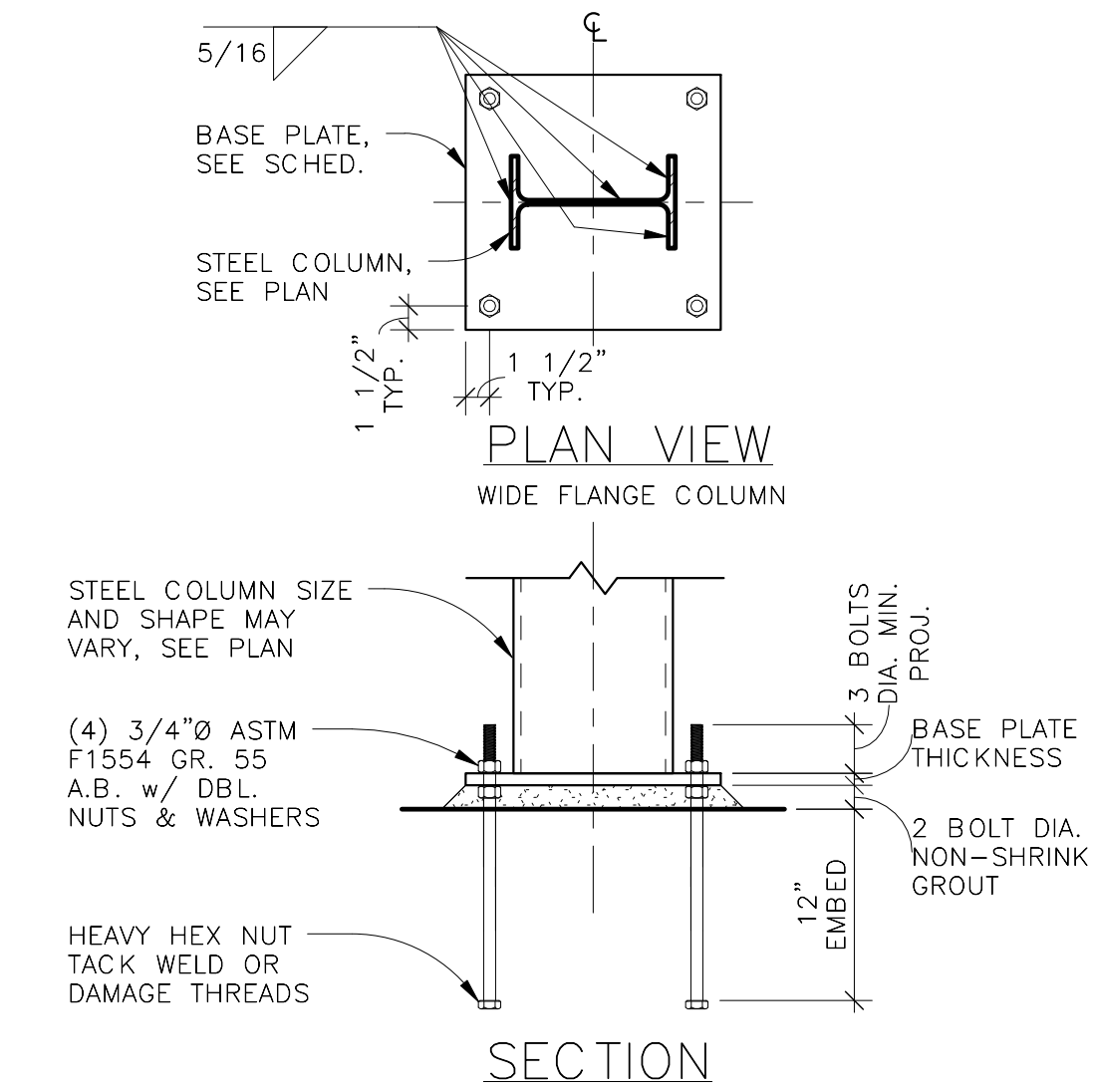
11 SECTION
3/4" = 1'-0"



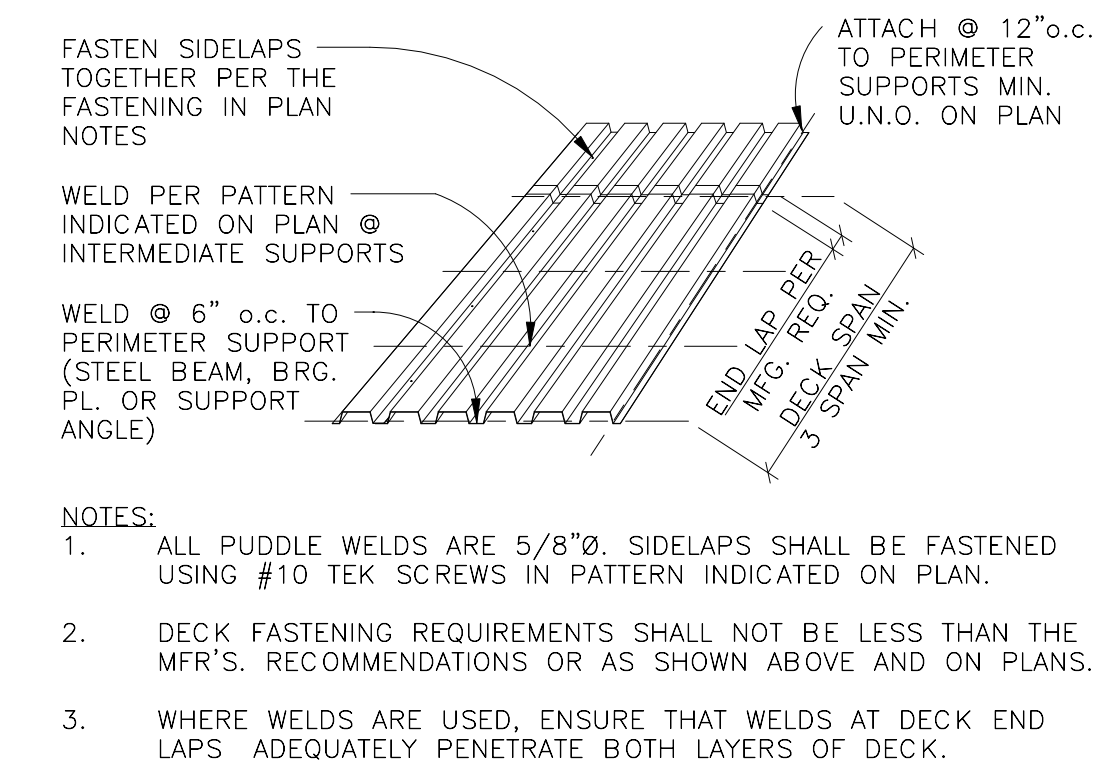
12 SECTION
1 1/2" = 1'-0"



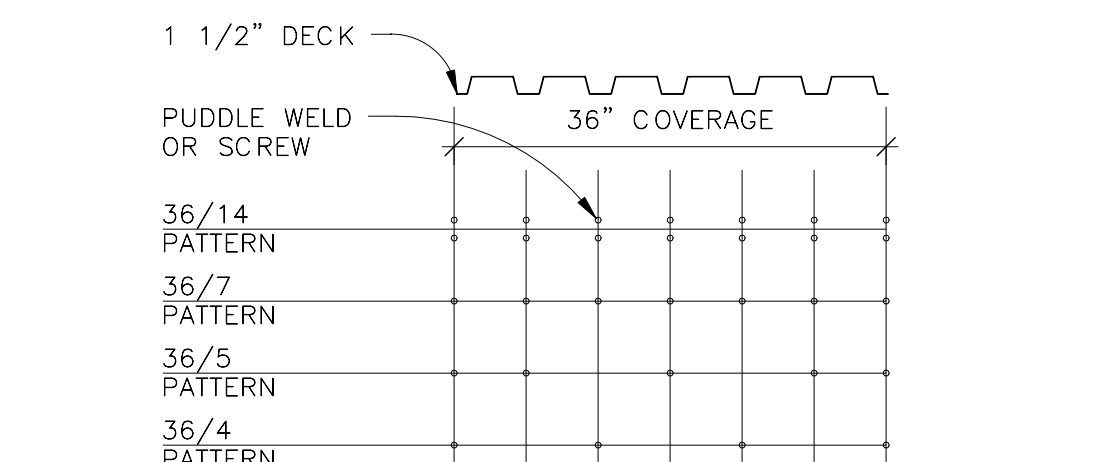
13 SECTION
1" = 1'-0"



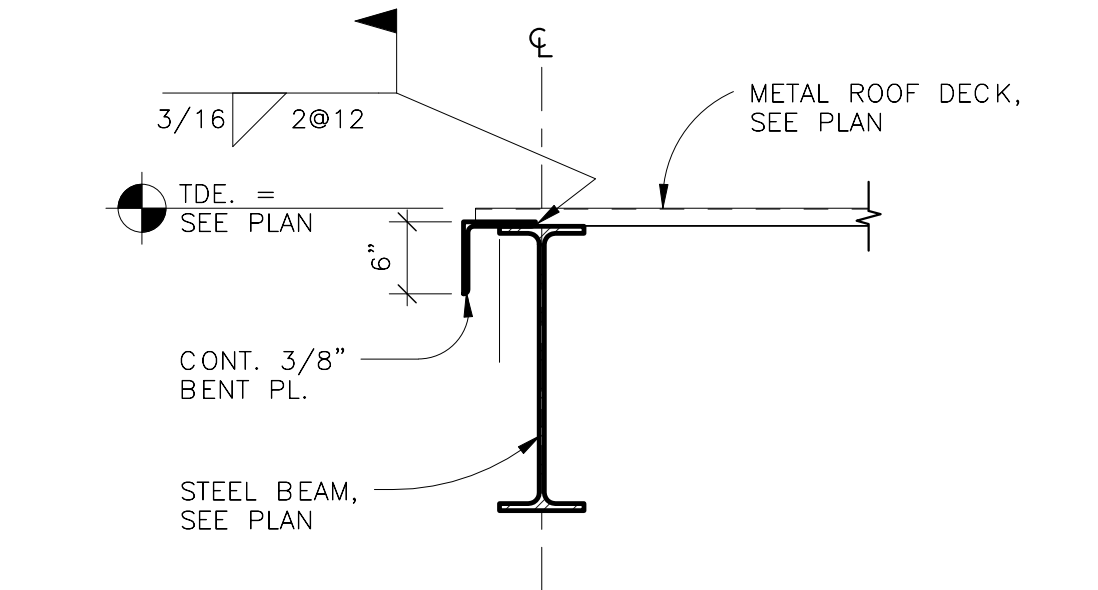
5 TYPICAL ANCHOR BOLT SETTING DETAIL
1" = 1'-0"



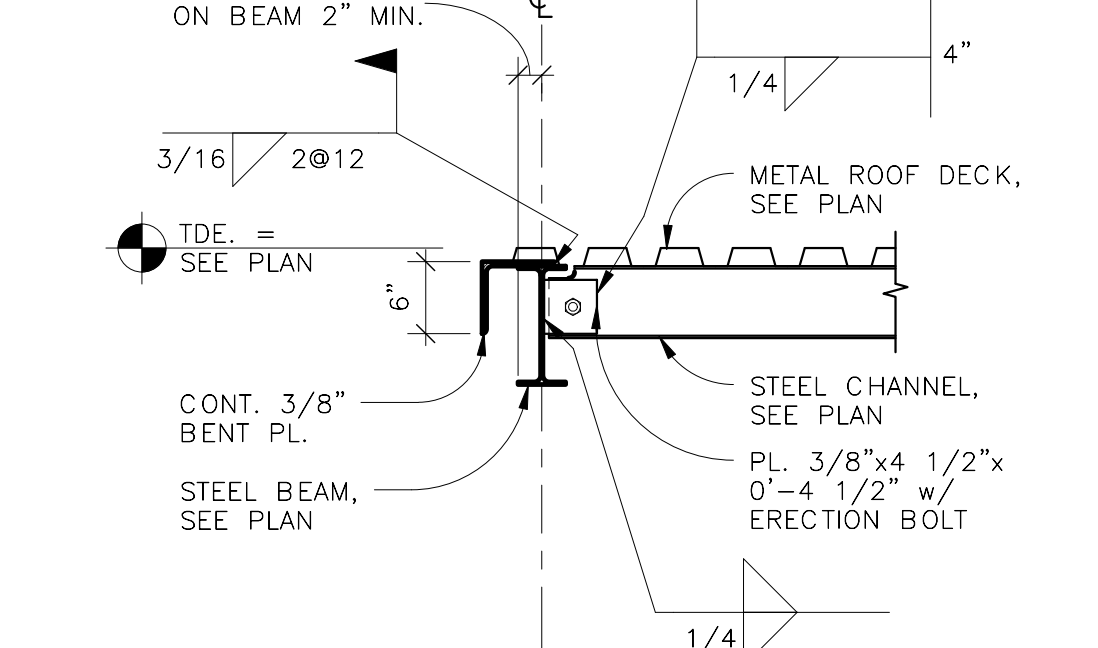
6 TYPICAL 1 1/2" ROOF DECK FASTENING INFORMATION
1/2" = 1'-0"



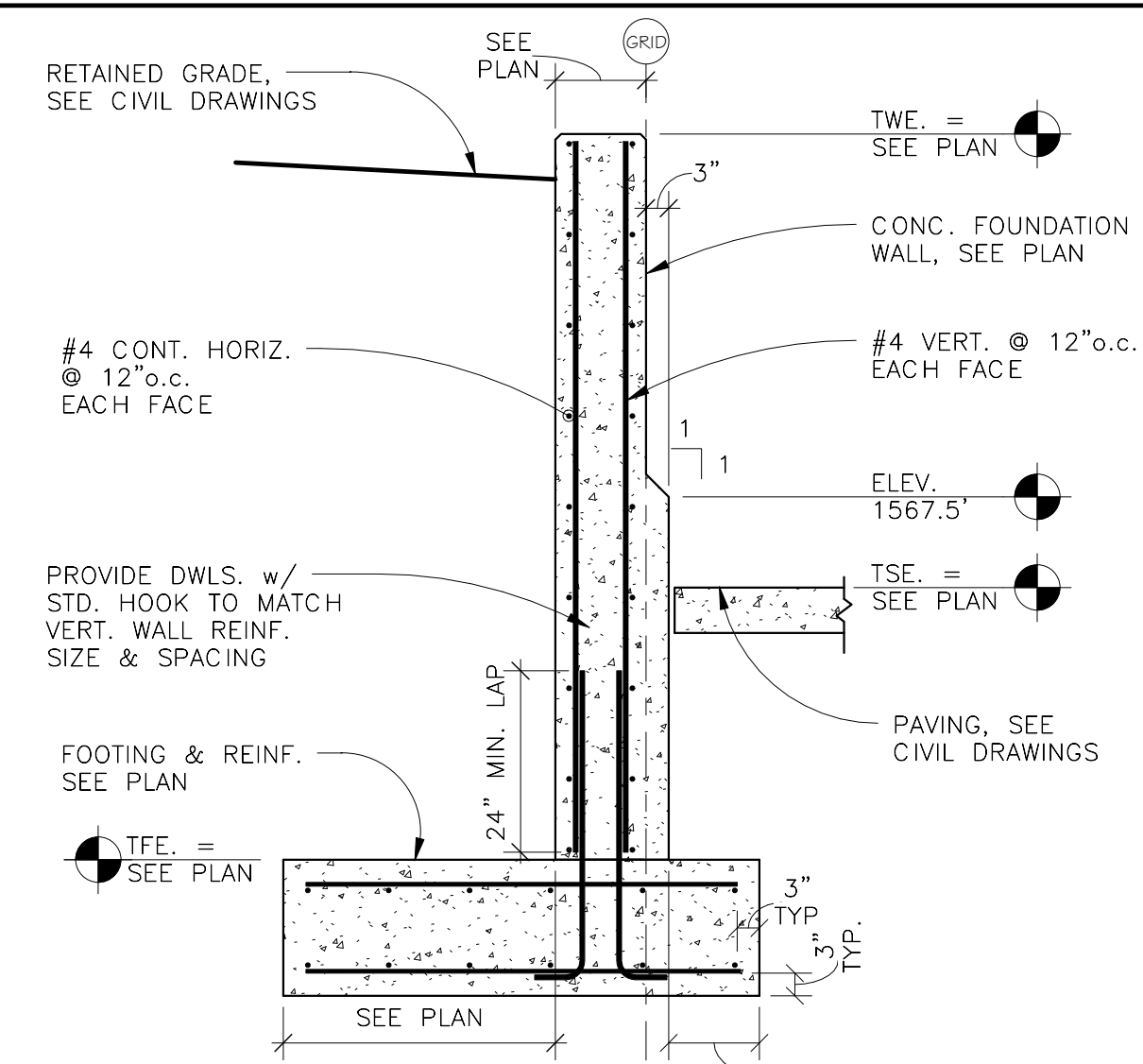
7 WELD PATTERNS FOR NON-COMPOSITE METAL DECK
3/4" = 1'-0"



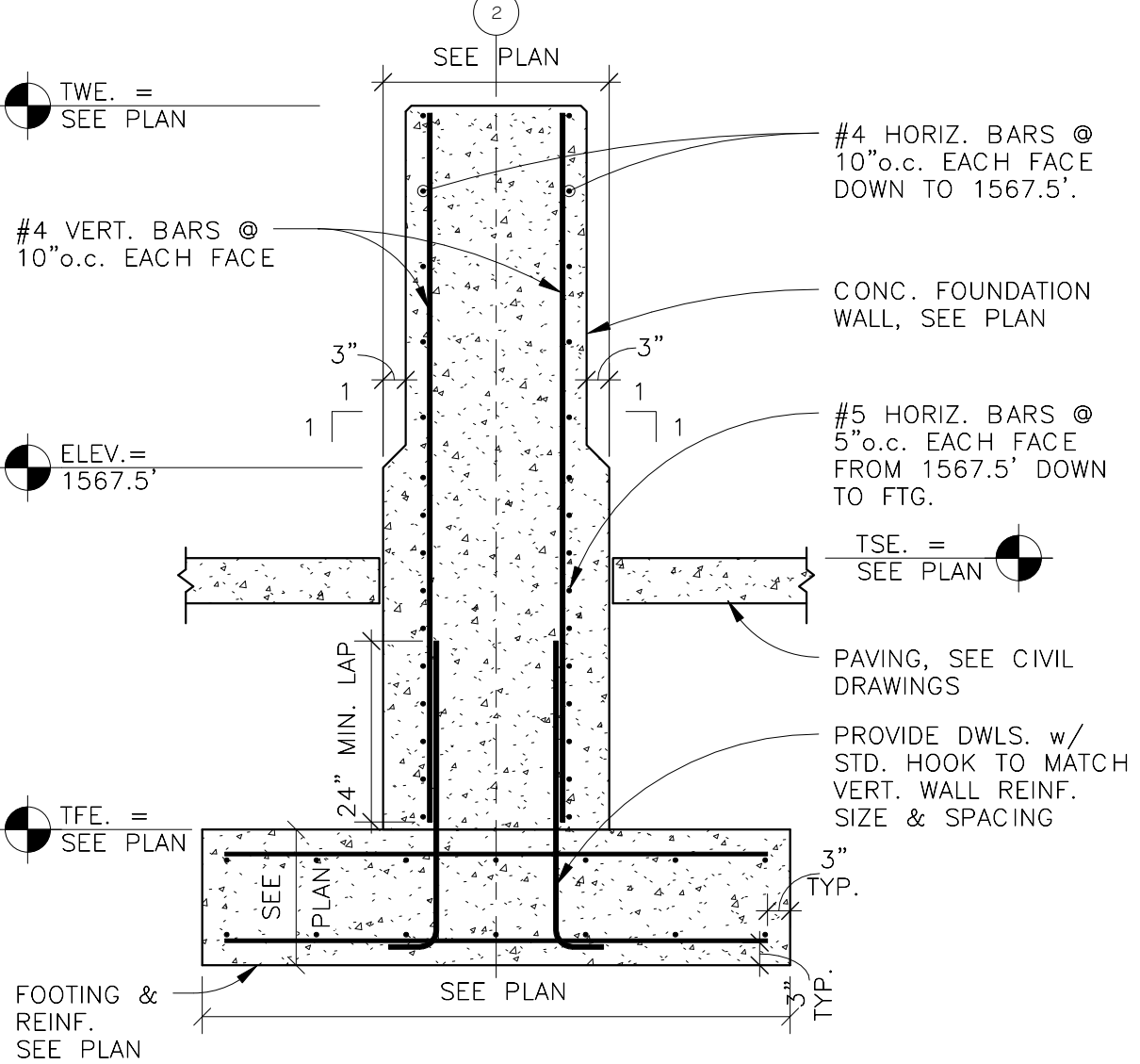
8 SECTION
3/4" = 1'-0"



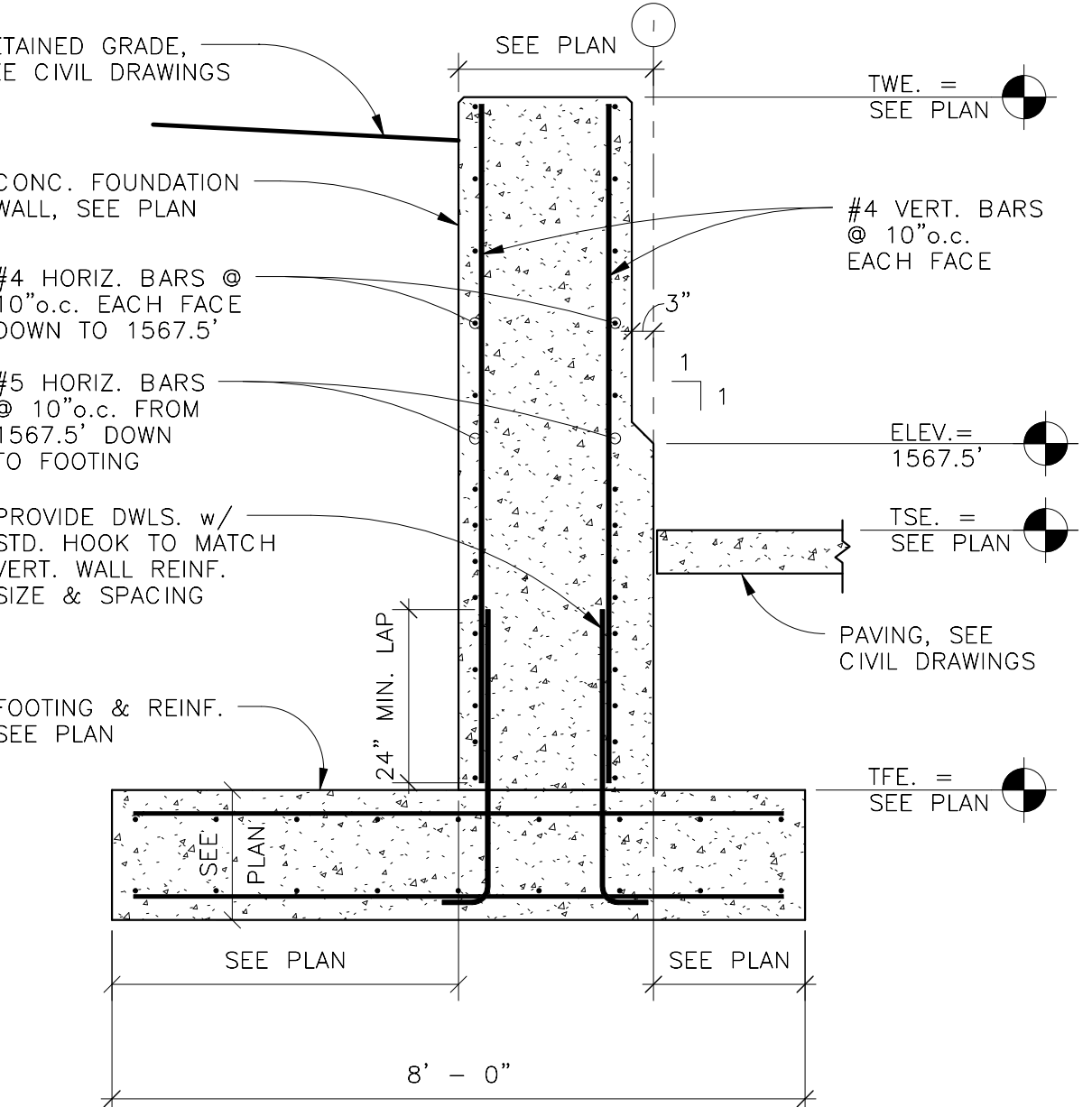
9 SECTION
3/4" = 1'-0"



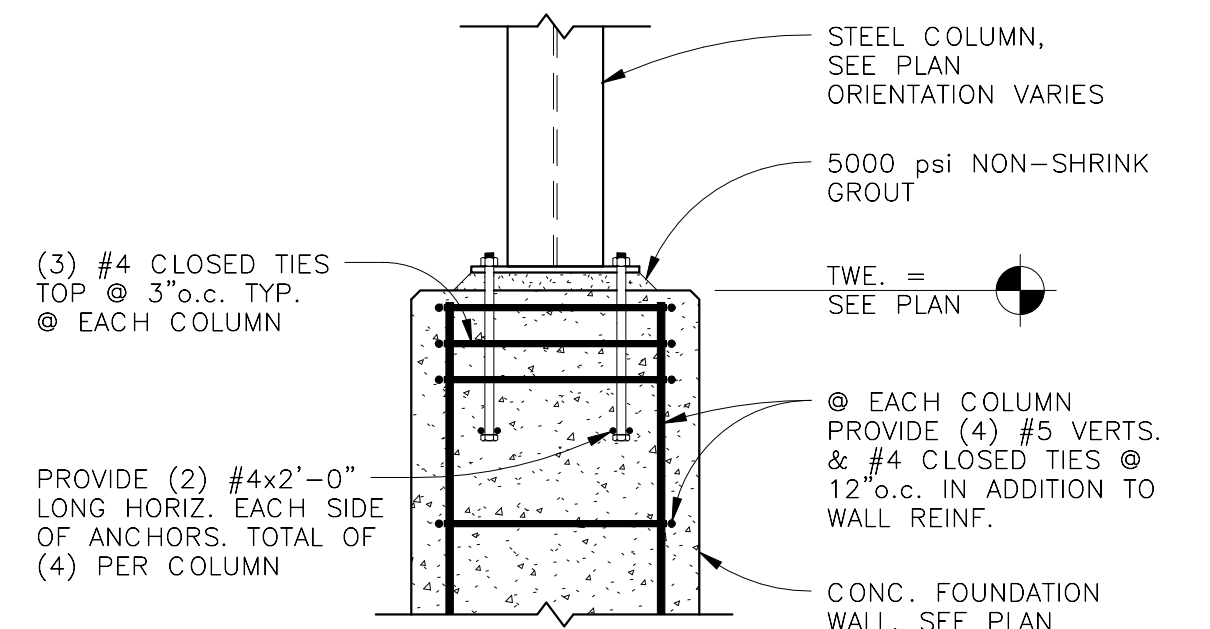
1 SECTION
1/2" = 1'-0"



2 SECTION
1/2" = 1'-0"



3 SECTION
1/2" = 1'-0"



4 SECTION
3/4" = 1'-0"

BID DOCUMENTS 7/1/2011

Revisions	Date



Advanced Structural Technologies
5001 American Blvd. W., Suite 800
Bloomington, MN 55437
(952) 854-9302 tel
(952) 854-9690 fax
www.astmn.com

AST

Anderson Engineering of Minnesota, LLC

13605 1st AVENUE NORTH, SUITE 100, PLYMOUTH, MN
TEL (763) 412-4000 FAX (763) 412-4090

www.ae-minn.com



NATIONAL
CEMETERY
ADMINISTRATION

Drawing Title STORAGE BINS SECTIONS AND DETAILS	Project Title REPLACE ADMINISTRATION AND MAINTENANCE BUILDING AND SITE IMPROVEMENTS	Date 07/01/2011
Approved: Director, Office of Construction Management J. LEVAR	Building Number J. LEVAR	Project No. 906CM3009
Approved: Director, Project Management Service	Location EAGLE POINT NATIONAL CEMETERY 2763 RILEY ROAD EAGLE POINT, OR 97524	DRAWING NO. S-3003-7.2
		Dwg. 166 Of 181