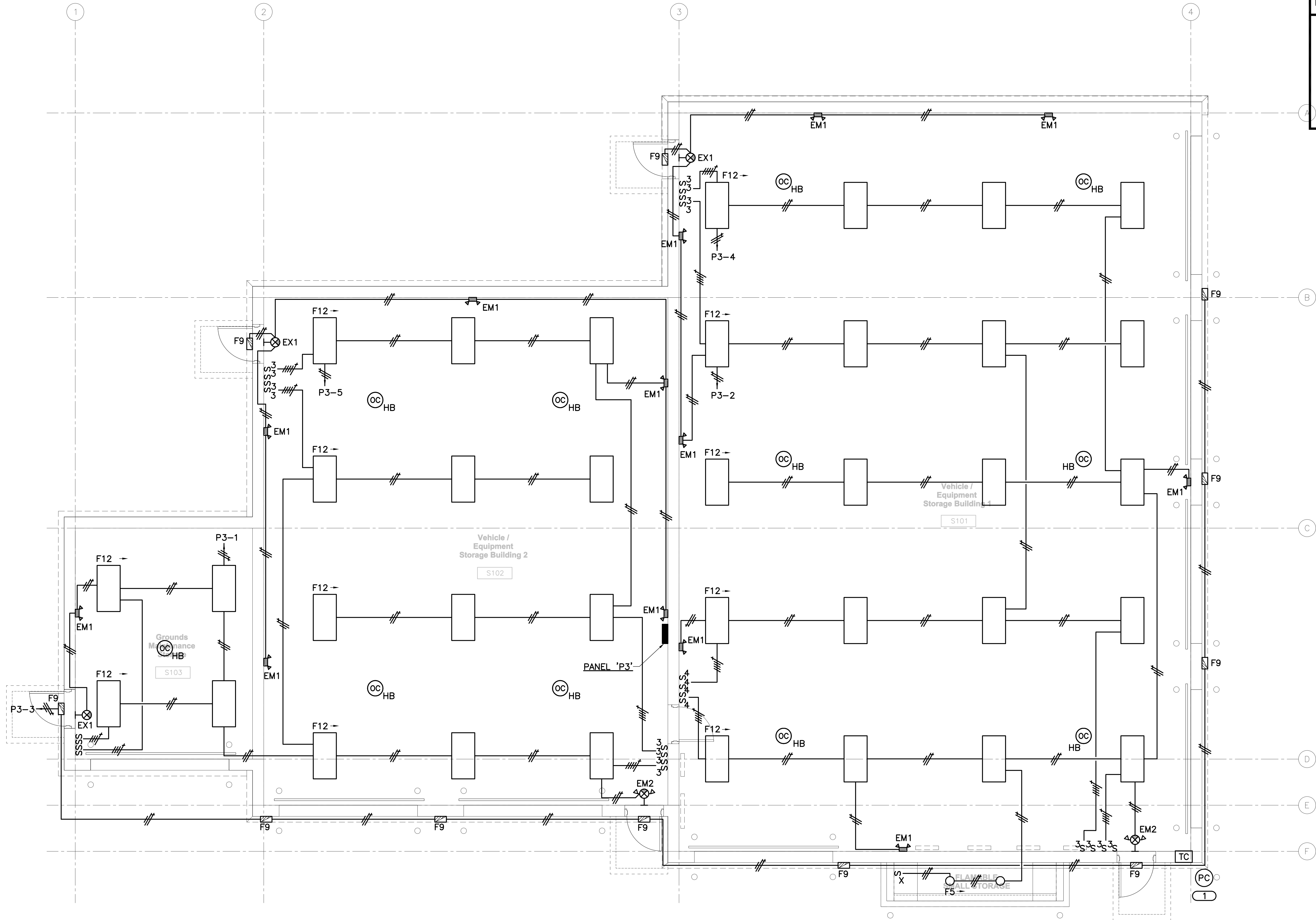
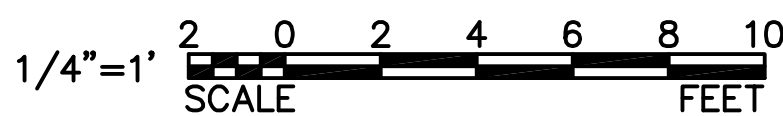


**KEYNOTES** #

1. PHOTO-SENSOR FOR EXTERIOR LIGHTING. REFER TO DETAIL 6/E-3.1 E.C. SHALL PENETRATE THE OUTSIDE WALL OF THE BUILDING AND ROUTE CONDUIT BACK TO THE [TC] LOCATED IN MECH. #A109. SEAL THE PENETRATION AFTER CONDUIT ROUTING.



**1 VEHICLE STORAGE BLDG. FLOOR PLAN - LIGHTING**  
SCALE 1/4"=1'-0"



**BID DOCUMENTS 7/1/2011**

Revisions	Date

**ENGINEERING CONSULTANTS**  
623 25TH AVENUE  
ROCK ISLAND, IL 61201  
309.786.0673 FAX: 309.786.5967  
www.kjww.com  
KJWW Project # 10.0356.00  
**STRUCTURAL / MECHANICAL / ELECTRICAL /  
TECHNOLOGY / MEDICAL EQUIPMENT SOLUTIONS**

I hereby certify that this Plan, Specification, or Report was prepared by me, or under my direct supervision and that I am a duly licensed Professional Engineer under the laws of the State of Oregon.

Signature: Lee D. VanOpdorp  
Name: Lee D. VanOpdorp  
Discipline: Electrical  
Oregon Registration No. 78702PE Expiration date: 06.30.12  
Date Issued: \*\*/\*\*/11

**Anderson Engineering of Minnesota, LLC**

13605 1st AVENUE NORTH, SUITE 100, PLYMOUTH, MN 55441  
TEL (763) 412-4000 FAX (763) 412-4090  
www.ae-mn.com



N ATIONAL  
C EMENTERY  
A DMINISTRATION

Drawing Title <b>VEHICLE STORAGE BLDG. FLOOR PLAN - LIGHTING</b>		Project Title REPLACE ADMINISTRATION AND MAINTENANCE BUILDING AND SITE IMPROVEMENTS		Date 7-1-2011
Approved: Director, Office of Construction Management		Building Number <b>3003</b>	Checked <b>JOHMcG</b>	Project No. 906CM3009
Approved: Director, Project Management Service		Drawn <b>BRAWIT</b>		DRAWING NO. <b>E-3003-2.1</b>
		Location EAGLE POINT NATIONAL CEMETERY 2763 RILEY ROAD EAGLE POINT, OR 97524		Dwg. 171 OF 181