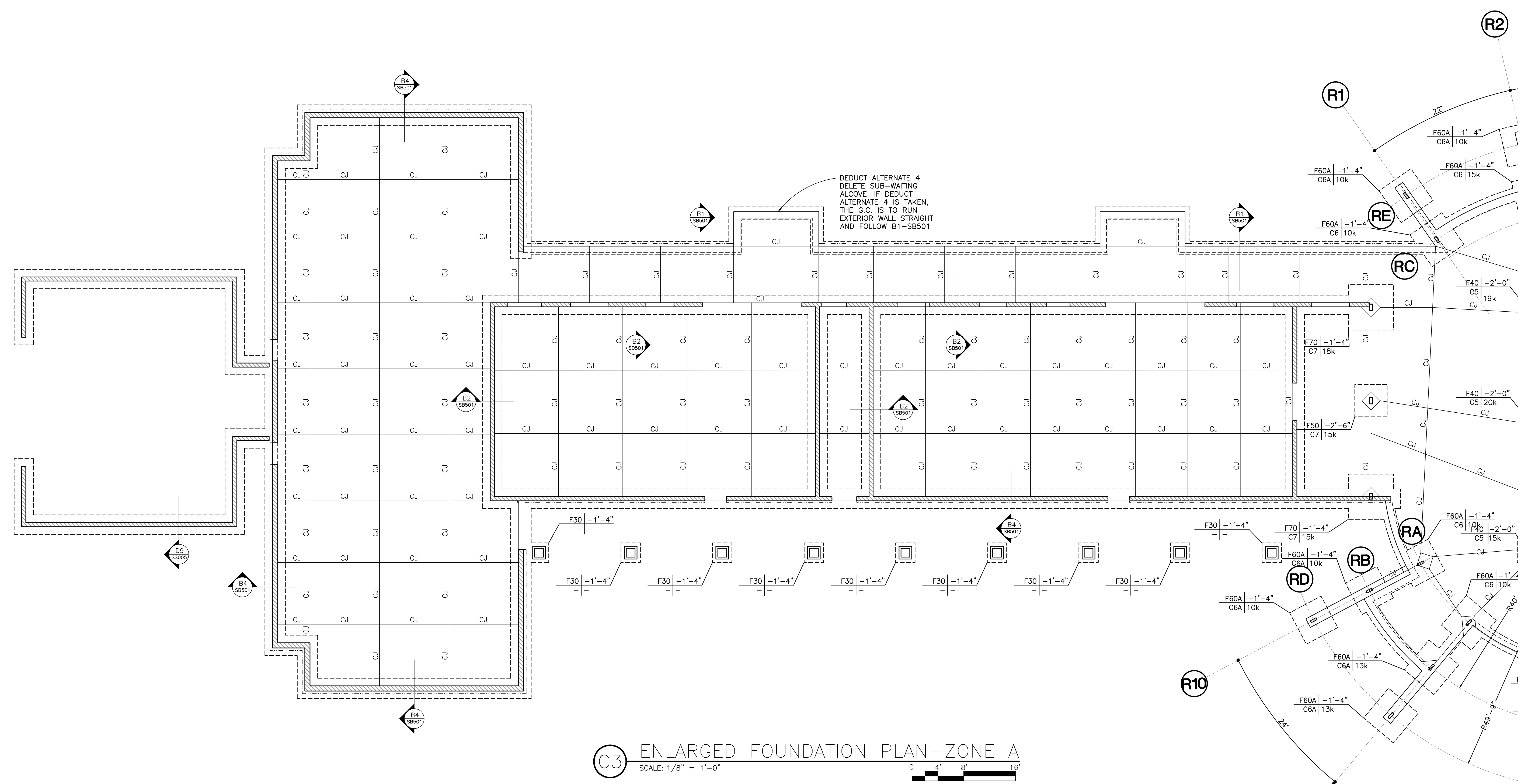


three inches = one foot
one and one half inches = one foot
one inch = one foot
three quarters inch = one foot
one half inch = one foot
three eighths inch = one foot
one eighth inch = one foot
one quarter inch = one foot
one eighth inch = one foot

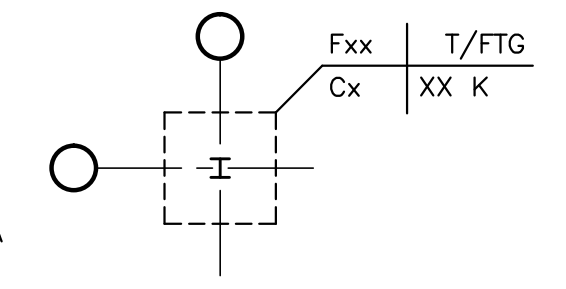


C3 ENLARGED FOUNDATION PLAN-ZONE A
SCALE: 1/8" = 1'-0"

- FOUNDATION PLAN NOTES:**
- DATUM ELEVATION IS 0'-0" MSL. NOMINAL T/SL ELEVATION AT FIRST FLOOR IS +0.0 FT. FROM DATUM ELEVATION. ELEVATIONS TO TOP OF FOOTINGS, SLABS, STEEL, WALLS, FLOORS, ETC. ARE REFERENCED ± FROM NOMINAL T/SL ELEVATION (I.E. T/SL -3", T/FTG -2'-0", T/W +8'-0", ETC.).
 - T/FTG ELEVATIONS ARE SHOWN ON PLAN FOR STRIP AND SPREAD FOOTINGS. FOOTING STEPS ARE SHOWN IN RELATIVE LOCATIONS UNLESS NOTED OTHERWISE ON PLAN. SEE SHT. "TYPICAL DETAILS" FOR FOOTING STEP AND SPACING REQUIREMENTS. CONTRACTOR SHALL COORDINATE AND FIELD VERIFY GRADING PLANS WITH STRUCTURAL FOUNDATION DETAILS TO MAINTAIN REQUIRED COVER OVER TOP AND DEPTH TO BOTTOM OF FOOTINGS AND GRADE BEAMS.
 - TOP OF WALL (T/W) AND TOP OF PILASTER (T/PIL) ELEVATIONS ARE NOTED ON PLAN OR IN DETAILS.
 - EXISTING T/FTG ELEVATIONS SHOWN ON THE DRAWINGS ARE BASED ON INFORMATION CONTAINED IN DESIGN DOCUMENTS OF THE EXISTING BUILDING AND MUST BE FIELD VERIFIED. A DISCREPANCY IN ELEVATION OR LOCATION MUST BE REPORTED TO THE COR BEFORE PROCEEDING WITH WORK.
 - TYPICAL SLAB ON GRADE (S.O.G.) IS 4" NORMAL WEIGHT CONCRETE REINFORCED WITH #4 AT 12 INCHES ON CENTER CENTERED IN THE SLAB. SEE ARCHITECTURAL FOR VAPOR BARRIER AND SUBBASE.
 - PROVIDE THICKENED S.O.G. UNDER ALL MASONRY WALLS WHERE NO FOOTINGS ARE SHOWN ON PLAN. REFER TO SHT. SS007 "TYPICAL DETAILS" FOR REQUIREMENTS.
 - CONTROL JOINTS—SAW CUT OR STRIPPABLE—ARE SHOWN ON PLAN, WHERE CONTRACTOR DESIRES TO BREAK SLAB POURS ALONG THESE JOINTS, THE "CONSTRUCTION JOINT" DETAILS SHOWN ON SHT. SS005 "TYPICAL DETAILS" SHALL BE USED.
 - NO UNDERCUTTING OR BACKFILLING IS PERMITTED UNDER ANY FOOTINGS. LEAN CONCRETE (f'c 2000PSI) OR FOOTING CONCRETE SHALL BE USED TO "BACKFILL" ANY OVEREXCAVATION.
 - CONTRACTOR SHALL SHORE ALL WALLS RECEIVING BACKFILL ON ONLY ONE SIDE OR WALLS WITH UNEQUAL LEVELS OF BACKFILL ON OPPOSITE SIDES, UNLESS NOTED OTHERWISE IN THE DETAILS. ANY WALLS FOR WHICH SHORING IS INDICATED AS REQUIRED IN THE PLANS OR DETAILS SHALL BE SHORED REGARDLESS OF BACKFILL CONDITIONS.
 - MASONRY SHOWN ON STRUCTURAL DRAWINGS DEFINES ONLY THE EXTENT AND REQUIREMENTS OF MASONRY UTILIZED FOR STRUCTURAL PURPOSES (I.E. BEARING WALLS, SHEAR WALLS, RETAINING WALLS FOUNDATION WALLS, COLUMNS, ETC.).
 - REFER TO ARCH., MECH., ELEC., PLUMB., OR OTHER DWGS. FOR LOCATION AND DIMENSION OF OPENINGS, SLEEVES, DRAINS, DEPRESSIONS, EMBEDS, NON-STRUCTURAL MASONRY, PRECAST PANELS, & OTHER RQMTS.

- CONTRACTOR SHALL VERIFY AND COORDINATE SIZES, LOCATIONS, AND INVERTS FOR ALL SLEEVES, OPENINGS, AND PLUMBING LINES WITH PLUMBING AND CIVIL DRAWINGS AND WITH EQUIPMENT SUPPLIERS FOR ITEMS ACTUALLY PURCHASED FOR THE PROJECT.
- SEE SHT. SS001-SS004 FOR "GENERAL NOTES" AND SHT. SS005-SS007 FOR "TYPICAL DETAILS". TYP. DTLS. ARE NOT GENERALLY CUT ON PLANS BUT RATHER ARE INTENDED TO DEFINE TYP. CONSTRUCTION CONDITIONS. WHERE TYP. DTLS. ARE CUT ON PLAN, THE INTENT IS TO ILLUSTRATE THE TYPE OF CONDITION AT WHICH THAT DETAIL IS INTENDED TO APPLY RATHER THAN EVERY OCCURRENCE OF THAT DETAIL.
- SEE SHT. SB101A FOR COLUMN SCHEDULE AND BASE PLATE DETAILS.
- FOOTINGS ARE NOTED ON PLAN WITH THE FOLLOWING DESIGNATIONS:

Fxx	=	FOOTING MARK PER SCHEDULE
T/FTG	=	TOP OF FOOTING FROM DATUM
Cx	=	COLUMN PER SCHEDULE, SEE SB101A
XX K	=	COLUMN LOAD (KIPS)
- ALL ROLLED WIDE FLANGE STEEL SECTION SHALL BE ATM A992 GRADE 50 (FY= 50 KS) UNLESS NOTED OTHERWISE. ALL OTHER ROLLED STEEL SECTIONS SHALL BE ATM A36 (FY= 36 KS), U.N.O. EXCEPT HESS ROUND SECTIONS WHICH SHALL BE ATM A500 GRADE B (FY= 46 KS) AND ATM A500 GRADE B (FY= 42 KS) RESPECTIVELY.



FOOTING SCHEDULE			
MARK	SIZE (LxWxD)	REINF.	REMARKS
F30	3'-0"x3'-0"x1'-0"	4 #4 E.W. BOT	
F40	4'-0"x4'-0"x1'-0"	4 #5 E.W. BOT	
F46	4'-0"x4'-6"x1'-0"	4 #5 E.W. BOT	
F50	5'-0"x5'-0"x1'-0"	5 #5 E.W. BOT	
F56	5'-0"x5'-6"x1'-1"	5 #5 E.W. BOT	
F60	6'-0"x6'-0"x1'-2"	5 #6 E.W. BOT	
F60A	6'-0"x6'-0"x1'-6"	6 #6 E.W. BOT 6 #5 E.W. TOP	
F66	6'-0"x6'-6"x1'-6"	6 #6 E.W. BOT 6 #6 E.W. TOP	
F70	7'-0"x7'-0"x1'-4"	6 #6 E.W. T&B	
F70A	7'-0"x7'-0"x2'-0"	7 #6 E.W. T&B	
F75	7'-6"x7'-6"x1'-4"	6 #6 E.W. T&B	

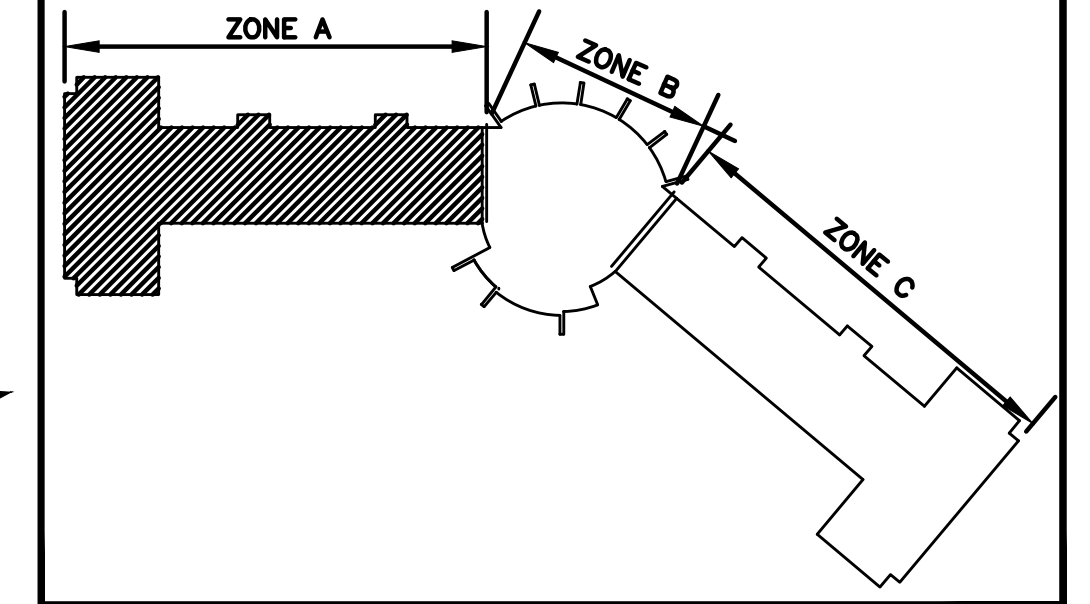
COLUMN SCHEDULE				
MARK	SIZE	BASE PLATE	ANCHOR BOLTS	REMARKS
C5	HSS8.625x0.375	R. 1'x15'x13"	4-3/4" DIA. W/9" EMBED	SEE F3/SS005
C6	HSS12x4x3/8"	R. 3/4'x16'x13"	4-3/4" DIA. W/9" EMBED	SEE F6/SF201
C6A	HSS12x4x3/8"	R. 3/4'x16'x2'-2"	4-3/4" DIA. W/9" EMBED	SEE F8/SF201
C7	HSS12x6x1/2"	R. 1'x15'x13"	4-3/4" DIA. W/9" EMBED	SEE F3/SS005

NOTE:
 1. ALL ANCHOR BOLTS ARE F1554 GR.36 U.N.O.
 2. ALL BASE P STEEL IS A36 U.N.O.

COORDINATION DRAWINGS

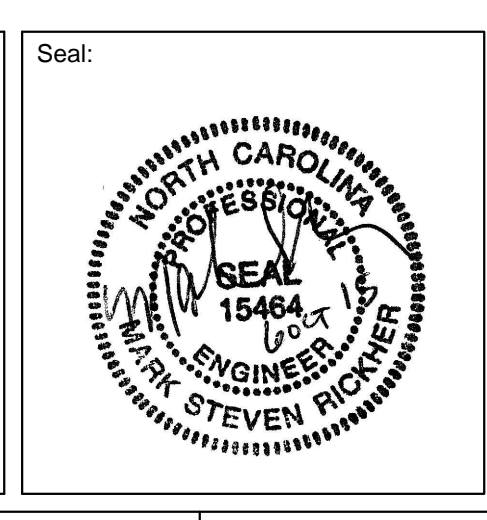
REFER TO SHEET G1001 FOR COORDINATION NOTES

KEY PLAN



No.	Description	Date
1	AMENDMENT #1	04-11-2016

VA U.S. Department of Veterans Affairs
CARL VINSON VA MEDICAL CENTER
 1826 VETERANS BLVD.
 DUBLIN, GA 31021



Architect / Engineer Address:
HARRELL
 DESIGN GROUP, P.C.
 formerly HARRELL, SALTRICK & HOPPER, PC

8016 TOWER POINT DRIVE CHARLOTTE, NC 28227
 P 704.814.1320 F 704.321.0833
 HDG PROJECT: 14004

Recommended Approvals:	
1. MEDICAL DIRECTOR	6. OPERATIONS SERVICE LINE MANAGER
2. ASSOCIATE DIRECTOR	7. INFECTION CONTROL MANAGER
3. CHIEF OF STAFF	8. SAFETY MANAGER
4. ASSOC. DIRECTOR	9. GENERAL ENGINEER
5. SERVICE LINE MGRS.	10. COR

Drawing Title:
ENLARGED FOUNDATION PLAN-ZONE A

Project Phase:
 BID DOCUMENTS - 100%

FULLY SPRINKLERED

Project Title:
CONSTRUCT NEW MENTAL HEALTH FACILITY

Drawn: JAR
 Checked: MSR

Building Number: 1
 Reviewed: []

File Name:
 Const. Contract No.:

Date: OCTOBER 7, 2015
 Project Number: 557-380
 Drawing No.: **SB101A**

