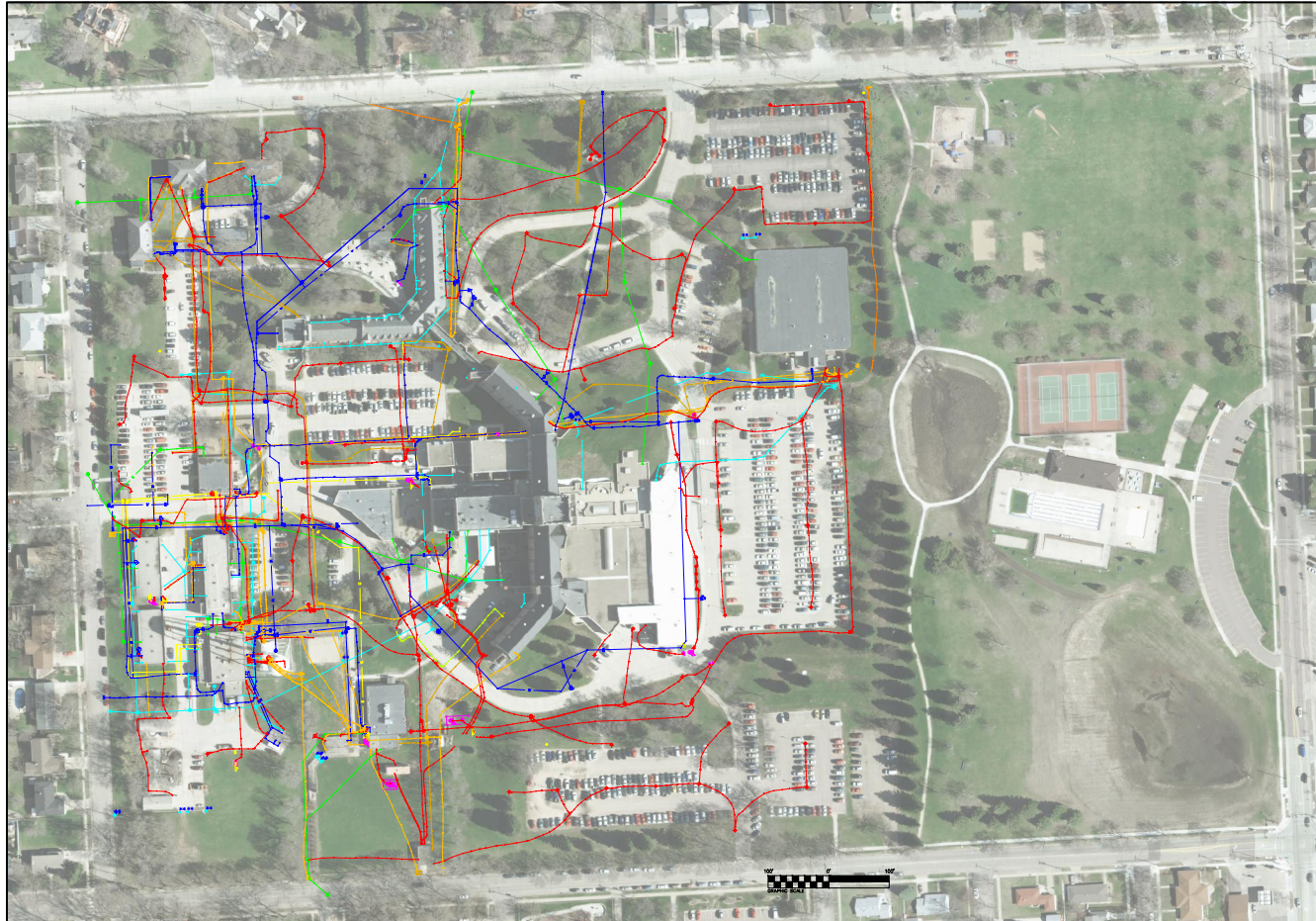


# VA Hospital Sioux Falls, SD UMSi Job #10406.1



## LEGEND

- UNELEC Electric Line - Electric Lines Level
- EHH Electric Handhole - Electric Structure Level
- UNWATR Water Line - Water Lines Level
- STEAM Underground Steam Line
- GVEN Gas Vent - Gas Structure Level
- PVLV Petroleum Valve - Gas Structure Level
- END Pipe End - Storm Structure Level
- UNTELE Telephone Line - Communication Lines Level
- CLIN Communications Line - Communication Lines Level
- TELFIB Fiber Optic Line - Fiber Optic Lines Level
- WATOFF Water Valve - Water Structure Level
- CHH Communications Hand Hole - Communication Structure Level
- CMH Communications Manhole - Communication Structure Level
- STLN Storm Line - Storm Lines Level
- SPOT Misc. Spot Elevation - Water Structure Level
- STEAMH Steam Manhole - Steam Structure Level
- FIRHYD Fire Hydrant - Water Structure Level
- UNGAS Gas Line - Gas Line Level
- CVLT Communications Vault - Communication Structure Level
- FOHH Fiber Optic Hand Hole - Fiber Optic Structure Level
- GMTR Gas Meter - Gas Structure Level
- OXYG Underground oxygen line - Gas Lines Level
- POWMTR Electric Meter - Electric Structure Level
- PTNK Petroleum Tank - Gas Structure Level
- SANSEW Sanitary Line - Sanitary Lines Level
- SAT Satellite Dish - Communication Structure Level
- SGN Sign Post - Electric Structure Level
- CBST Water Curb Stop - Water Structure Level
- APR Apron - Storm Structure Level
- EOV Edge of underground vault - Misc. Lines Level
- TVFO Television Fiber Optic - Fiber Optic Lines Level
- UNTVCB Television Cable - TV Cable Lines Level
- FOMH Manhole / Fiber Optic - Fiber Optic Structure Level
- DROPIN Drop Inlet - Storm Structure Level
- ELEGMH Electric Manhole - Electric Structure Level
- EOLIT Electric Outlet - Electric Structure Level
- ETRAN Electric Pedestal - Electric Structure Level
- FOVLT Fiber Optic Vault - Fiber Optic Structure Level
- GASVLV Gas Valve - Gas Structure Level
- GPMP Gas Pump - Gas Structure Level
- POWERP Electric Pole - Electric Structure Level
- POWLGT Light Pole - Electric Structure Level
- SANMH Sanitary Manhole - Sanitary Structure Level
- SPLT Spot Light - Electric Structure Level
- STMH Storm Manhole - Storm Structure Level
- TVBOX Television Pedestal - TV Structure Level
- STDP Fire standpipe/valve/hose hookup (water) - Water Structure Level
- STCO Storm clean out - Storm Structure Level
- STEAMOLD QL D Underground Steam Line - QL D Steam Lines Level
- UGASOLD QL D Gas Line - QL D Gas Lines Level
- CB Catch Basin - Storm Structure Level
- GHZ Geodetic Horizontal CONTROL - Control Points Level
- STLNOLD QL D Storm Line - QL D Storm Lines Level
- STMHOLD QL D Storm Manhole - QL D Structure Level
- SANOLD QL D Sanitary Line - QL D Sanitary Lines Level
- UNWATOLD QL D Water Line - QL D Water Lines Level
- VENTLN Vent line from underground tank - Gas Lines Level
- DT Drain Tile - Storm Points Level
- DTQLD QL D Drain Tile - QL D Points Level
- MH Misc. manhole - Misc Structure Level
- TELM Telephone Manhole - Communication Structure Level
- TELBOX Telephone Pedestal - Communication Structure Level
- WATMH Water Manhole - Water Structure Level
- GVLVOLD QL D Gas Valve - QL D Structure Level
- WOFOLD QL D Water Valve - QL D Structure Level
- SMHOLD QL D Sanitary Manhole - QL D Structure Level