

three inches = one foot
one and one half inches = one foot
one inch = one foot
three quarters inch = one foot
one half inch = one foot
three eighths inch = one foot
one quarter inch = one foot
one eighth inch = one foot

FLOW TEST DATA:

STATIC: 56PSI
RESID: 48PSI
FLOW: 2,161 GPM

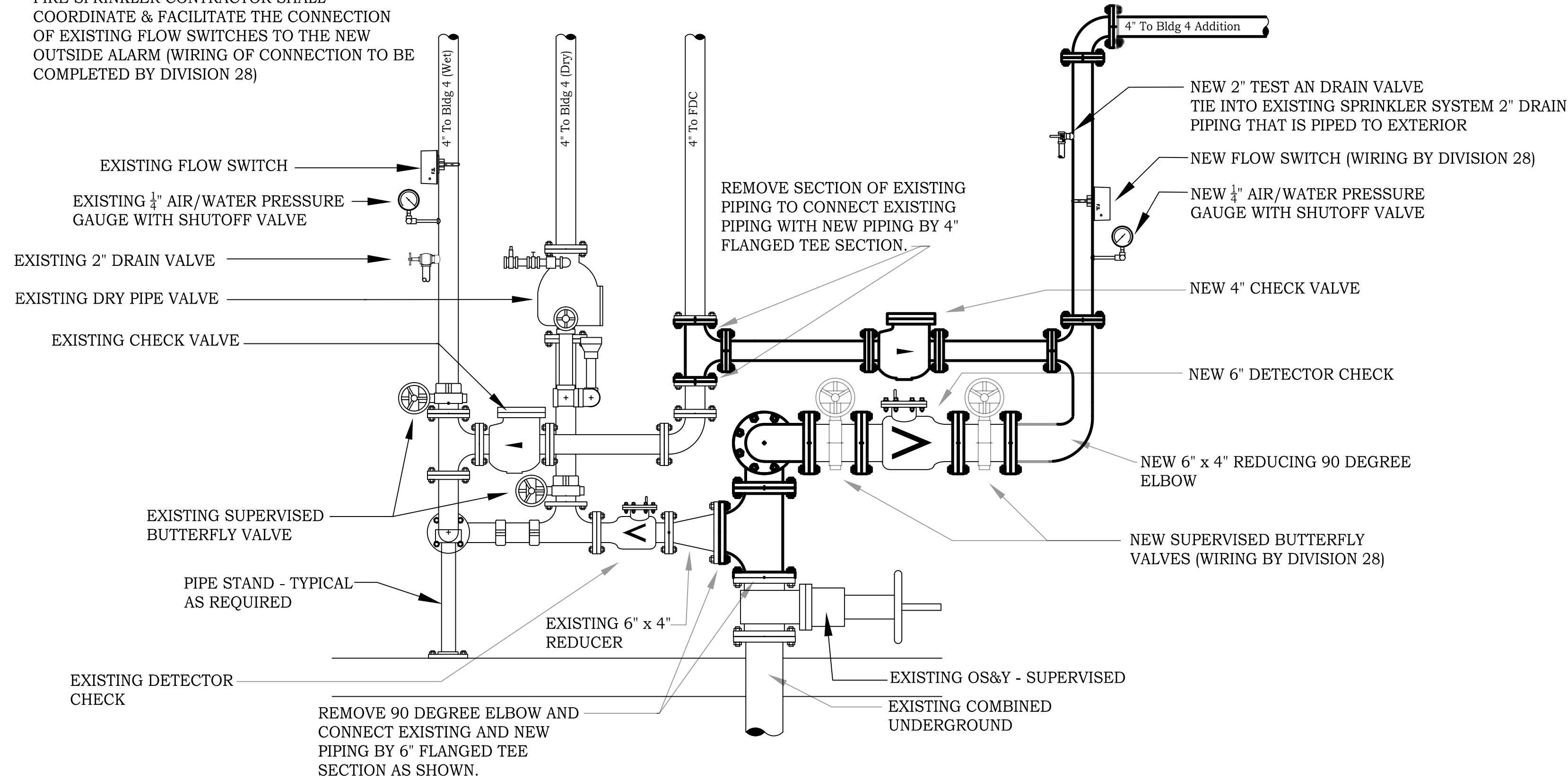
SHEET LEGEND
F001 - SITE PLAN, NOTES AND RISER DETAILS
F100 - BASEMENT & FIRST FLOOR FIRE PROTECTION PLAN
F101 - FIRST FLOOR EARLY WARNING SMOKE DETECTION PLAN
F102 - FIRST FLOOR CLEAN AGENT PLAN & SECTION DETAILS
F103 - SPOT-TYPE SMOKE DETECTION PLAN
F104 - BASEMENT & FIRST LEVEL FIRE ALARM PLAN

DIVISION 21 CONSTRUCTION NOTES

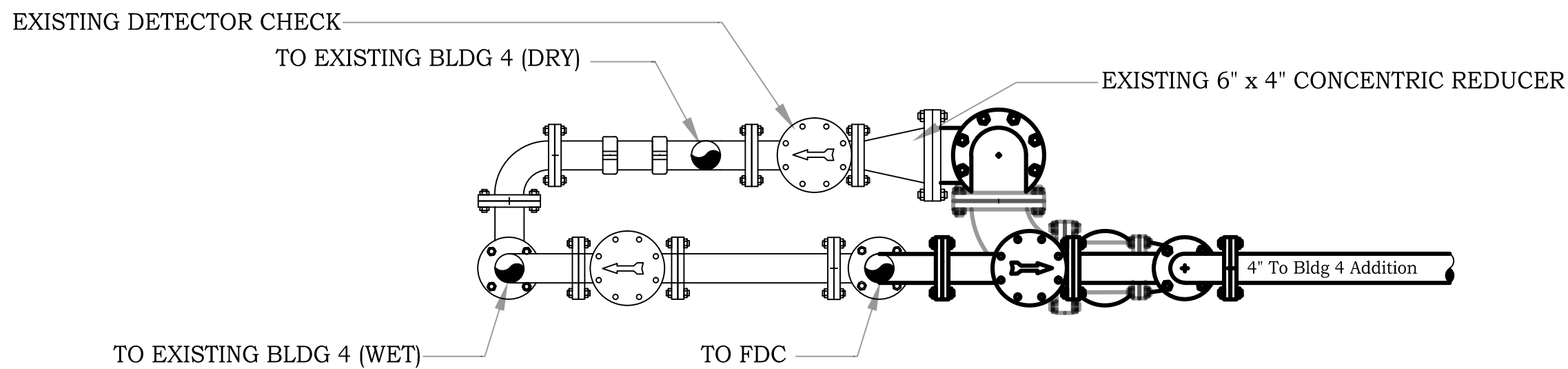
1. THE DIVISION 21 CONSTRUCTION NOTES ON THIS DRAWING ALSO PERTAIN TO THE FIRE PROTECTION WORK INDICATED ON THE ADDITIONAL FIRE PROTECTION DRAWINGS INCLUDED AS PART OF THIS DOCUMENT SET.
2. FIRE PROTECTION CONTRACTOR'S SCOPE OF WORK INCLUDES WORK ON BASEMENT LEVEL AND FIRST LEVEL. PROVIDE NEW FIRE PROTECTION WET SYSTEM BEGINNING AT THE EXISTING VALVE ASSEMBLY LOCATED IN TUNNEL 173. FIRE PROTECTION CONTRACTOR TO PROVIDE CODE COMPLIANT, FULLY FUNCTIONAL FIRE SPRINKLER SYSTEM FOR THE ENTIRETY OF BUILDING 108 WHETHER NOTED OR OTHERWISE. SCOPE OF WORK ALSO INCLUDES PROVIDING FM-200 SYSTEM AND EARLY WARNING AIR SAMPLING SYSTEM TO PROTECT DATA ROOM. SEE SPECIFICATION FOR ADDITIONAL SCOPE OF WORK INFORMATION.
3. THIS IS A BID DOCUMENT AND IS NOT A DESIGN DRAWING. CONFIRMATION OF THE FINAL DESIGN (VIA SHOP DRAWINGS, HYDRAULIC CALCULATIONS, PRODUCT SUBMITTAL, ETC.) IS THE SOLE RESPONSIBILITY OF THE FIRE PROTECTION CONTRACTOR.
4. ALL AREAS ASSUME LIGHT HAZARD SPRINKLER PROTECTION IN ACCORDANCE WITH NFPA 13 (2010) UNLESS NOTED OTHERWISE.
5. EXPOSED SPRINKLER PIPING IS ONLY PERMITTED IN AREAS WITHOUT CEILINGS. FIRE PROTECTION CONTRACTOR IS RESPONSIBLE FOR COORDINATING WITH THE ARCHITECT OF RECORD WHERE APPLICABLE.
6. QUICK RESPONSE FM APPROVED SPRINKLERS ARE REQUIRED IN ALL AREAS UNLESS NOTED OTHERWISE.
7. SPRINKLERS ARE REQUIRED TO BE CENTER OF TILE (+/- 1").
8. FIRE PROTECTION CONTRACTOR IS RESPONSIBLE FOR CONFIRMING FINAL SPRINKLER LOCATIONS, TYPES AND FINISHES IN ALL AREAS WITH THE ARCHITECT OF RECORD.
9. MINIMUM 18" CLEARANCE REQUIRED BETWEEN SPRINKLER DEFLECTOR AND TOP OF STORAGE AND OBSTRUCTIONS IN ALL AREAS.
10. PROVIDE ALL SYSTEM COMPONENTS NECESSARY FOR A COMPLETE INSTALLATION. SYSTEM COMPONENTS SHALL INCLUDE BUT ARE NOT LIMITED TO DISTRIBUTION PIPING, SPRINKLER PIPING, SPRINKLERS, PIPE SUPPORTS, ALARM DEVICES, DRAINS, TEST CONNECTIONS, CONTROL VALVES AND CHECK VALVES.
11. THE FIRE PROTECTION CONTRACTOR IS RESPONSIBLE FOR COORDINATION WITH ALL TRADES. PROVIDE ALTERNATE PIPE ROUTING, IF NECESSARY, TO ELIMINATE CONFLICTS.
12. ANY ADDITIONAL SPRINKLERS REQUIRED PER NFPA 13 (2010) TO AVOID OBSTRUCTIONS OR PROVIDE ADEQUATE COVERAGE ABOVE AND BELOW ALL OBSTRUCTIONS IS THE RESPONSIBILITY OF THE FIRE PROTECTION CONTRACTOR. VERIFY ALL LOCATIONS WITH ACTUAL FIELD CONDITIONS.
13. SHOP DRAWINGS SHALL BE APPROVED BY THE OWNER'S DESIGNATED REPRESENTATIVE AND THE CITY OF ST. CLOUD AND STATE OF MN REQUIREMENTS PRIOR TO FABRICATION.
14. ALL COMPONENTS OF THE SPRINKLER SYSTEM SHALL BE IN ACCORDANCE WITH NFPA 13 (2010), NFPA 25 (2008), NFPA 72 (2010), PROJECT SPECIFICATIONS, AND THE CITY OF ST. CLOUD REQUIREMENTS.
15. TESTING OF SPRINKLER PIPING SHALL BE IN ACCORDANCE WITH NFPA 13 (2010) (200 PSI FOR 2 HOURS).
16. TAMPER SWITCHES, FLOW SWITCHES, AND HORN & STROBES ARE PROVIDED AND INSTALLED BY THE FIRE PROTECTION CONTRACTOR AND WIRED BY OTHERS.
17. HANG ALL BRANCH LINE AND MAIN PIPING PER NFPA 13 (2010), CHAPTER 9.
18. HIGH TEMPERATURE AND INTERMEDIATE TEMPERATURE SPRINKLERS SHALL BE INSTALLED IN ACCORDANCE WITH SECTION 8.3.2 OF NFPA 13 (2010).
19. LOW POINTS IN THE SPRINKLER SYSTEM SHOULD BE CONNECTED WHERE PRACTICAL. THE AUXILIARY DRAIN VALVE SHALL BE ACCESSIBLE FROM THE FINISHED FLOOR AND PIPED TO FACILITY EXTERIOR. DRAINS SHALL HAVE CONCRETE SPLASH BLOCK OR SIMILAR METHOD TO CONTROL RUNOFF AND EROSION AT THE FACILITY EXTERIOR.
20. CONTRACTOR SHALL INDICATE ON SHOP DRAWINGS ALL PIPE SUPPORTS AND LOCATIONS IN ACCORDANCE WITH NFPA 13 (2010).
21. UNLESS NOTED OTHERWISE, ALL AREAS INCLUDE A WET SPRINKLER SYSTEM. TEMPERATURE MAINTAINED GREATER THAN OR EQUAL TO 40 DEGREES FAHRENHEIT AT ALL TIMES, AT THE RESPONSIBILITY OF THE OWNER.
22. STEEL SPRINKLER PIPE REQUIRED IN ALL AREAS. SEE SPECIFICATIONS FOR REQUIREMENTS.
23. ALL PENETRATIONS AT FIRE WALLS, FIRE BARRIERS AND SMOKE BARRIERS (OR OTHER RATED ASSEMBLIES) REQUIRED TO BE SEALED IN ACCORDANCE WITH MINNESOTA STATE BUILDING CODE (MSBC) OR OTHER APPROVED MEANS COORDINATE WITH ARCHITECTURAL DRAWINGS FOR LOCATIONS OF APPLICABLE WALLS.
24. FIRE PROTECTION CONTRACTOR TO VERIFY THE ACCURACY OF THE BUILDING PLANS AND SPECIFICATIONS WITH THE DESIGN TEAM AND ACTUAL FIELD CONDITIONS. PRIOR TO BID. MODIFICATIONS REQUIRED TO THE BUILDING PLANS AND SPECIFICATIONS SHALL BE IDENTIFIED AND DISCUSSED WITH THE DESIGN TEAM. REQUIRED CLARIFICATIONS SHALL BE MADE BY ADDENDA.

1 SITE PLAN
SCALE: NOT TO SCALE

FIRE SPRINKLER CONTRACTOR SHALL COORDINATE & FACILITATE THE CONNECTION OF EXISTING FLOW SWITCHES TO THE NEW OUTSIDE ALARM (WIRING OF CONNECTION TO BE COMPLETED BY DIVISION 28)



2 VALVE ASSEMBLY DETAIL - NORTH ELEVATION
SCALE: NOT TO SCALE



3 VALVE ASSEMBLY DETAIL - PLAN VIEW
SCALE: NOT TO SCALE

CONSTRUCTION DOCUMENTS 100%

No	REVISION	DATE



STAMP/SEAL
I HEREBY CERTIFY THAT THIS PLAN SPECIFICATION OR REPORT WAS PREPARED BY ME OR UNDER MY DIRECT SUPERVISION AND THAT I AM A QUALIFIED PROFESSIONAL ENGINEER UNDER THE LAWS OF THE STATE OF MINNESOTA
CHRISTOPHER LEAVER
DATE: 12-03-2014
REG. NO. 46011

DRAWING TITLE
SITE PLAN, NOTES AND RISER DETAILS

PROJECT TITLE
CONSTRUCT NEW IT CENTER FOR HEALTH CARE TECHNOLOGY MANAGEMENT EXPANSION
BUILDING No 108
LOCATION ST. CLOUD VA MCS ST. CLOUD, MN 56303
CHECKED BY CL
DRAWN BY RV
DATE 12-03-14
PROJECT NO 656-14-246
CADD FILE
DRAWING NO F001



JLG 130708

three inches = one foot
one and one half inches = one foot
one inch = one foot
three quarters inch = one foot
one half inch = one foot
three eighths inch = one foot
one quarter inch = one foot
one eighth inch = one foot

EXISTING FIRE DEPARTMENT CONNECTION WITH NEW 24 VOLT WEATHERPROOF OUTSIDE ALARM. ALARM SHALL BE SUPPLIED BY FIRE SPRINKLER CONTRACTOR & INSTALL BY DIVISION 28.

INSTALL NEW VALVE ASSEMBLY (SEE SHEET F001 DETAILS 2 & 3) TO FEED NEW MAIN FOR NEW BUILDING.

SLEEVE HOLE WHEN POURING CONCRETE

UP TO FIRST LEVEL

IF NECESSARY, PATCHING WORK SHALL BE COMPLETED BY THE FIRE SPRINKLER CONTRACTOR, UNLESS DIRECTED OTHERWISE.

SPRINKLERS & PIPING SHALL BE INSTALLED AS CLOSE TO THE CEILING AS POSSIBLE TO AVOID CONFLICTS WITH LIGHTING. THE FIRE SPRINKLER CONTRACTOR SHALL COORDINATE WITH ELECTRICAL & MECHANICAL PRIOR TO FABRICATION &/OR INSTALLATION. IF NECESSARY ADDITIONAL SPRINKLERS SHALL BE ADDED TO COMPLY WITH NFPA 13 OBSTRUCTION REQUIREMENTS.

1 BASEMENT FIRE PROTECTION PLAN
SCALE: 3/16" = 1'-0"

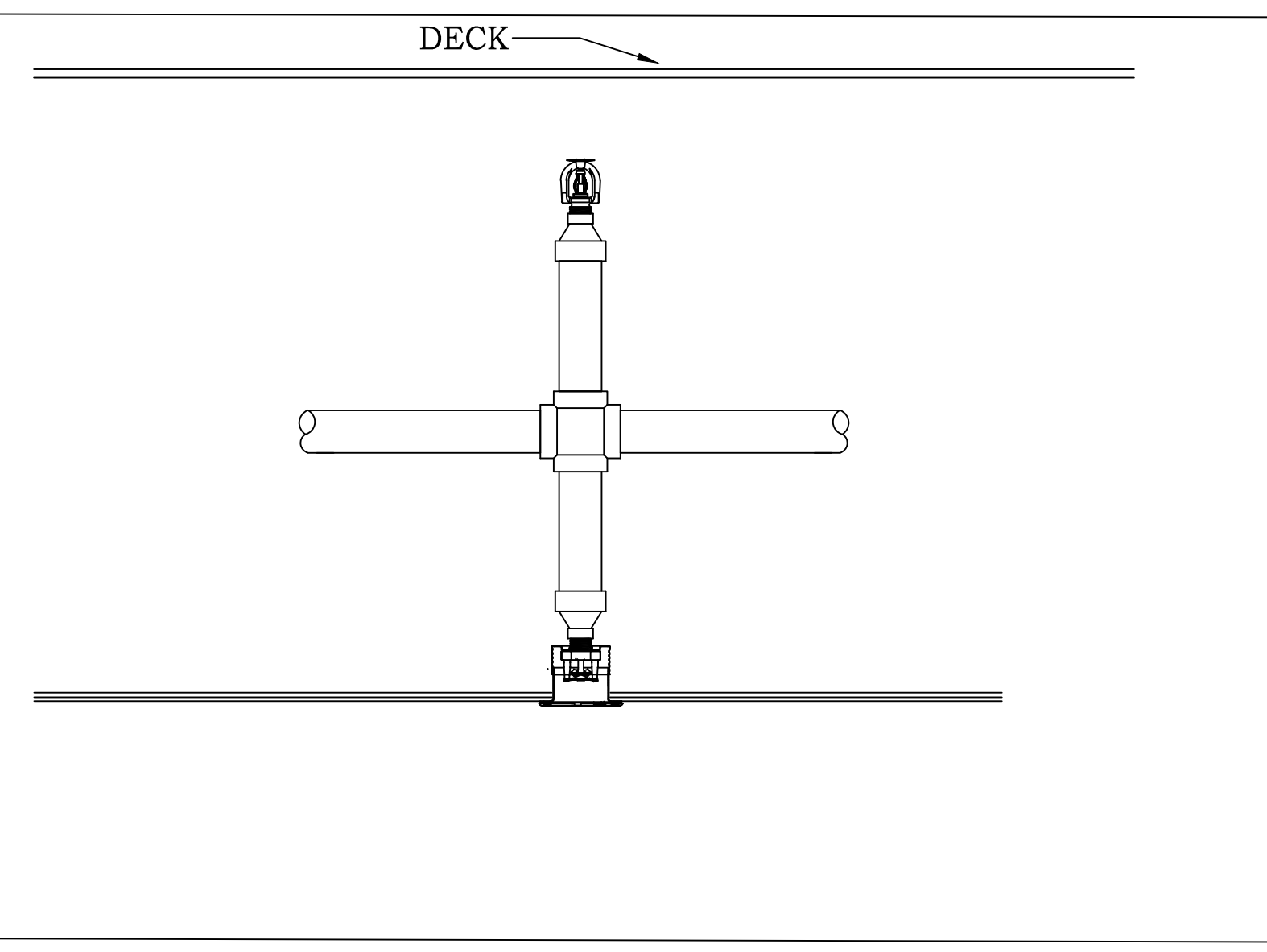
SI DEWALL SPRINKLER PROTECTION SHALL BE INSTALLED PER SECTION 8.7.4.1.1.1 OF NFPA 13 AND MANUFACTURERS DATA SHEET. THE LOCATION AND PENETRATION OF SPRINKLER PIPING SHALL BE COORDINATED AND APPROVED PRIOR TO INSTALLATION.

SPRINKLER SYMBOL INDICATES THAT AN UPRIGHT AND CONCEALED PENDENT SPRINKLER ARE TO BE INSTALLED AT THE SAME LOCATION, BUT AT DIFFERENT ELEVATIONS. (SEE DETAIL 3). THE FIRE SPRINKLER CONTRACTOR SHALL INSTALL A CONCEALED SPRINKLER AT CENTER OF TILE, AND AN UPRIGHT SPRINKLER AT THE DECK. THE INSTALLATION AND SPACING SHALL BE IN ACCORDANCE WITH NFPA 13.

2 FIRST FLOOR FIRE PROTECTION PLAN
SCALE: 3/16" = 1'-0"

SPRINKLER LEGEND	
	UPRIGHT
	CONCEALED PENDENT
	UPRIGHT & CONCEALED PENDENT HEAD
	NEW PIPE MAIN
	NEW BRANCH LINE PIPE

HAZARD SYMBOLS	
	LIGHT HAZARD *Rooms Without Designation shall be Considered Light Hazard
	ORDINARY HAZARD GROUP 1
	ORDINARY HAZARD GROUP 2



3 ARM OVER ASSEMBLY - MULTIPLE SPRINKLERS
SCALE: NOT TO SCALE



STAMP/SEAL
I HEREBY CERTIFY THAT THIS PLAN SPECIFICATION OR REPORT WAS PREPARED BY ME OR UNDER MY DIRECT SUPERVISION AND THAT I AM A QUALIFIED PROFESSIONAL ENGINEER UNDER THE LAWS OF THE STATE OF MINNESOTA.
CHRISTOPHER LEAVER
DATE: 12-03-2014
REG. NO. 46011

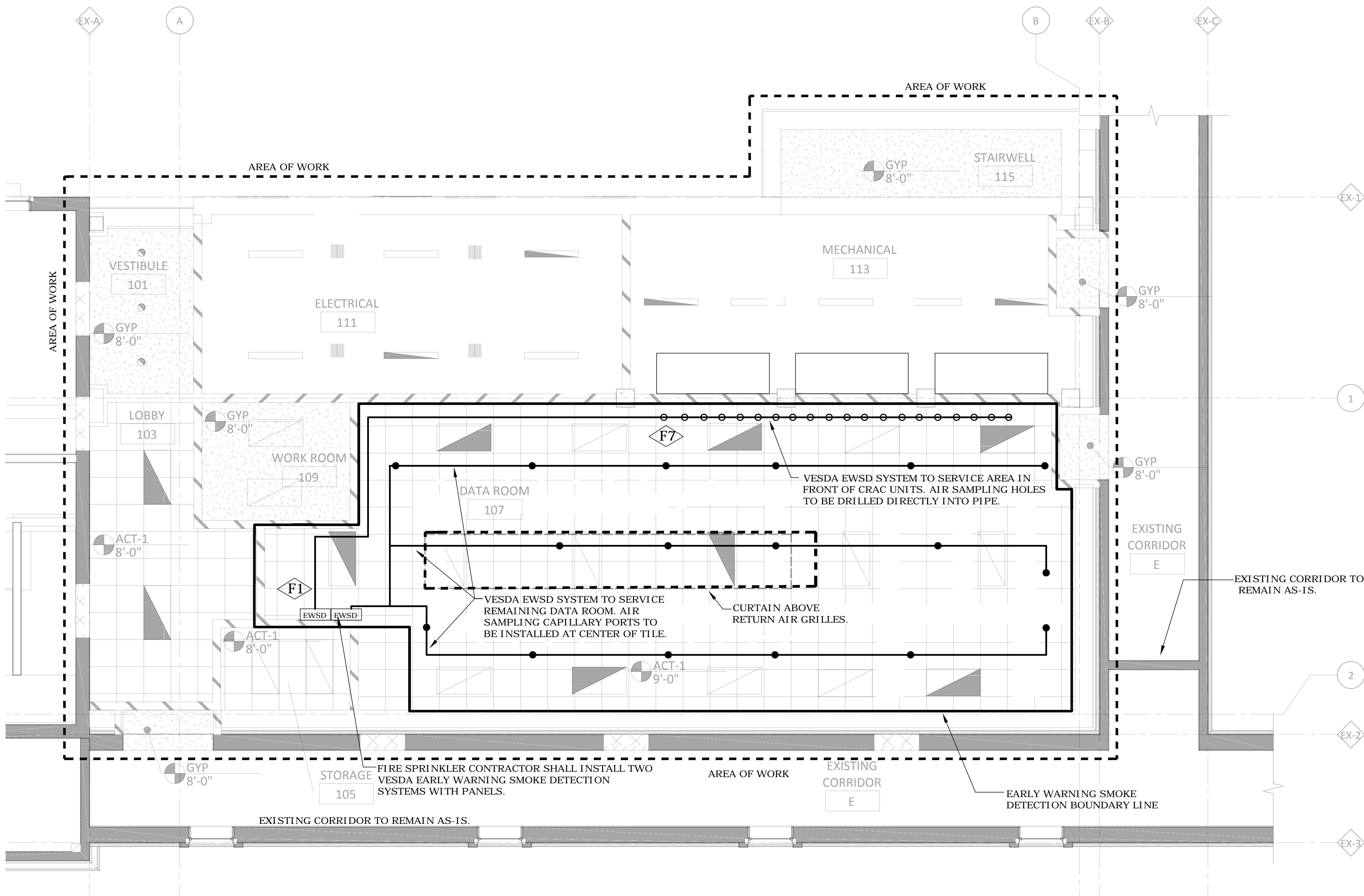
DRAWING TITLE
BASEMENT & FIRST FLOOR
FIRE PROTECTION PLAN

PROJECT TITLE
CONSTRUCT NEW IT CENTER
FOR HEALTH CARE
TECHNOLOGY MANAGEMENT
EXPANSION
BUILDING No. 108
CL
RV
DATE: 12-03-2014
REG. NO. 46011



CONSTRUCTION DOCUMENTS 100%

three inches = one foot
one and one half inches = one foot
one inch = one foot
one inch = one foot
three quarters inch = one foot
three quarters inch = one foot
one half inch = one foot
one half inch = one foot
three eighths inch = one foot
three eighths inch = one foot
one quarter inch = one foot
one quarter inch = one foot
one eighth inch = one foot
one eighth inch = one foot



1 FIRST FLOOR EARLY WARNING SMOKE DETECTION PLAN
SCALE: 1/4" = 1'-0"

FIRE PROTECTION KEY NOTES

- F1 PROVIDE VESDA EARLY WARNING SMOKE DETECTION CONTROL PANEL (LASERPLUS). THIS DETECTOR MONITORS THE CEILING EARLY WARNING SAMPLING PORTS. PANEL MOUNTED ON WALL WITH TOP OF PANEL AT 6'-0" A.F.F.
- F2 PROVIDE NEW ADDRESSABLE CLEAN AGENT CONTROL PANEL. TO BE UL CROSS-LISTED WITH CYLINDER SOLENOIDS. TOP OF CONTROL PANEL TO BE LOCATED AT 6'-0" A.F.F.
- F3 PROVIDE SMOKE DETECTORS AT CEILING AND BELOW RAISED FLOOR FOR CLEAN AGENT SUPPRESSION SYSTEM. SMOKE DETECTORS TO BE SPACED AT A MAXIMUM OF 250 SQUARE FEET.
- F4 PROVIDE CLEAN AGENT NOTIFICATION DEVICES.
- F5 PROVIDE CLEAN AGENT MANUAL RELEASE STATION. ABORT STATION AND MAINTENANCE BY-PASS KEY SWITCH MOUNTED BELOW CONTROL PANEL.
- F6 PROVIDE A DETAILED, DIMENSIONED AND SCALED ELEVATION DRAWING IN SHOP DRAWINGS INDICATING CONTROL PANEL, SWITCHES, DEVICES, EARLY WARNING SMOKE DETECTOR, BATTERY CABINETS AND ALARM ANNUNCIATION DEVICES AT THIS LOCATION FOR REVIEW.
- F7 PROVIDE AIR SAMPLING HOLES DRILLED DIRECTLY INTO VESDA EARLY WARNING SMOKE DETECTION PIPE. SPACING AND NUMBER OF AIR SAMPLING HOLES SHALL BE DETERMINED BY THE CONTRACTOR AND AS REQUIRED BY MANUFACTURER.
- F8 CLEAN AGENT REMOTE DISPLAY/CONTROL PANEL.
- F9 WIRE SPOT DETECTORS BACK TO FIRE SUPPRESSION CONTROL PANEL AS A SUB-SYSTEM TO THE BUILDING FIRE ALARM SYSTEM.

FIRE PROTECTION NOTES

- A. PROVIDE SIGNAGE AT CONTROL PANELS, EACH ALARM ANNUNCIATION DEVICE, MANUAL RELEASE STATIONS, ABORT SWITCHES AND MAINTENANCE BY-PASS SWITCHES. SEE SPECIFICATIONS.
- B. PROVIDE ALARM MONITORING CONTACTS FOR EACH DETECTOR FOR INTERFACE BUILDING AUTOMATION SYSTEM (BAS) AND BUILDING FIRE ALARM (BFA).
- C. CONTRACTOR TO PROVIDE TRAINING SESSION (MINIMUM 4 HOURS THAT INCLUDES VIDEO/AUDIO).

FIRE PROTECTION LEGEND

- EWSD VESDA EARLY WARNING SMOKE DETECTOR (EWSD) PANEL
- VESDA EWSD NOZZLE PORT (CAPILLARY)
- AIR SAMPLING HOLE
- AIR SAMPLING PIPE

CONSTRUCTION DOCUMENTS 100%

No	REVISION	DATE



JLG 130708

STAMP/SEAL
I HEREBY CERTIFY THAT THIS PLAN SPECIFICATION OR REPORT WAS PREPARED BY ME OR UNDER MY DIRECT SUPERVISION AND THAT I AM A duly LICENSED PROFESSIONAL ENGINEER UNDER THE LAWS OF THE STATE OF MINNESOTA.
CHRISTOPHER LEAVER
DATE: 12-03-2014
REG. NO. 40011

DRAWING TITLE
FIRST FLOOR EARLY WARNING SMOKE DETECTION PLAN

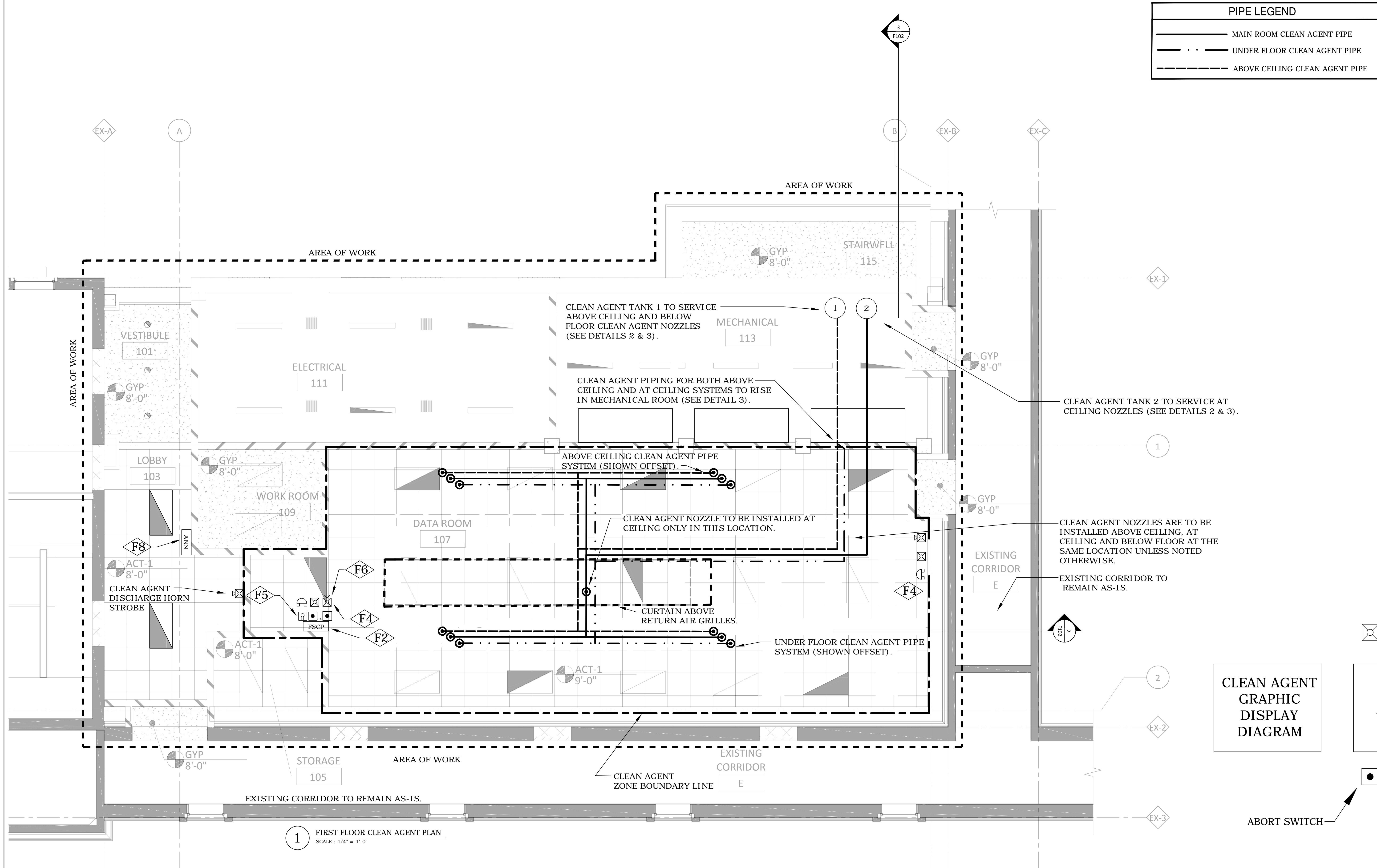
PROJECT TITLE
CONSTRUCT NEW IT CENTER FOR HEALTH CARE TECHNOLOGY MANAGEMENT EXPANSION

BUILDING No 108
LOCATION ST. CLOUD VA MCS ST. CLOUD, MN 56303
CHECKED BY CL
DRAWN BY RV
CADD FILE
DRAWING NO. F101

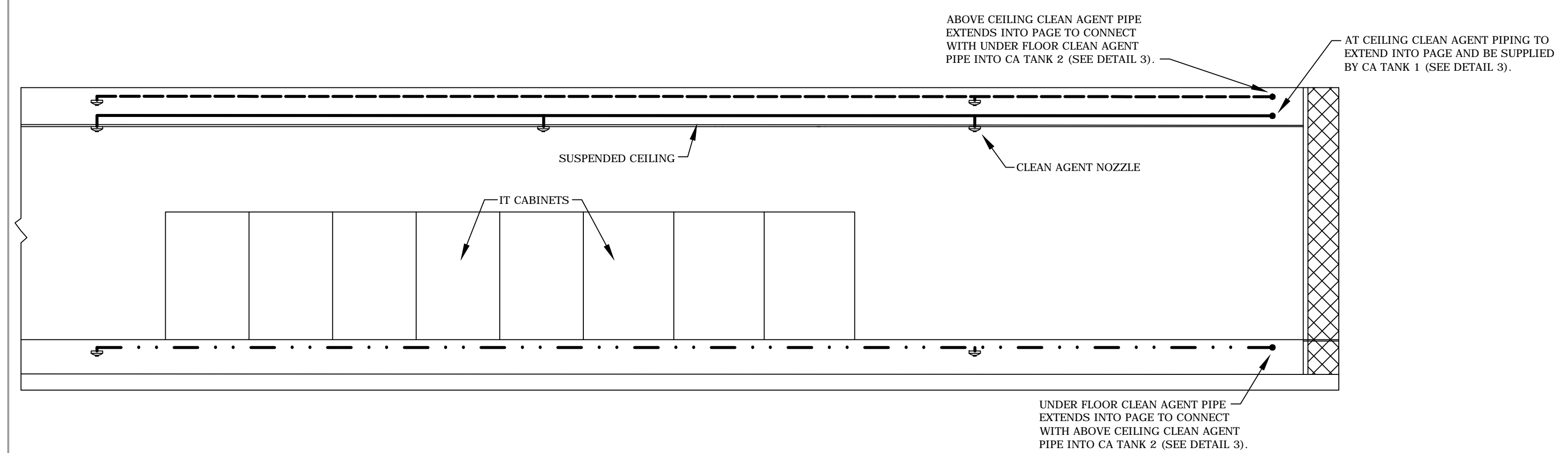
DATE 12.03.14
PROJECT NO. 656-14-246
DRAWING NO. F101



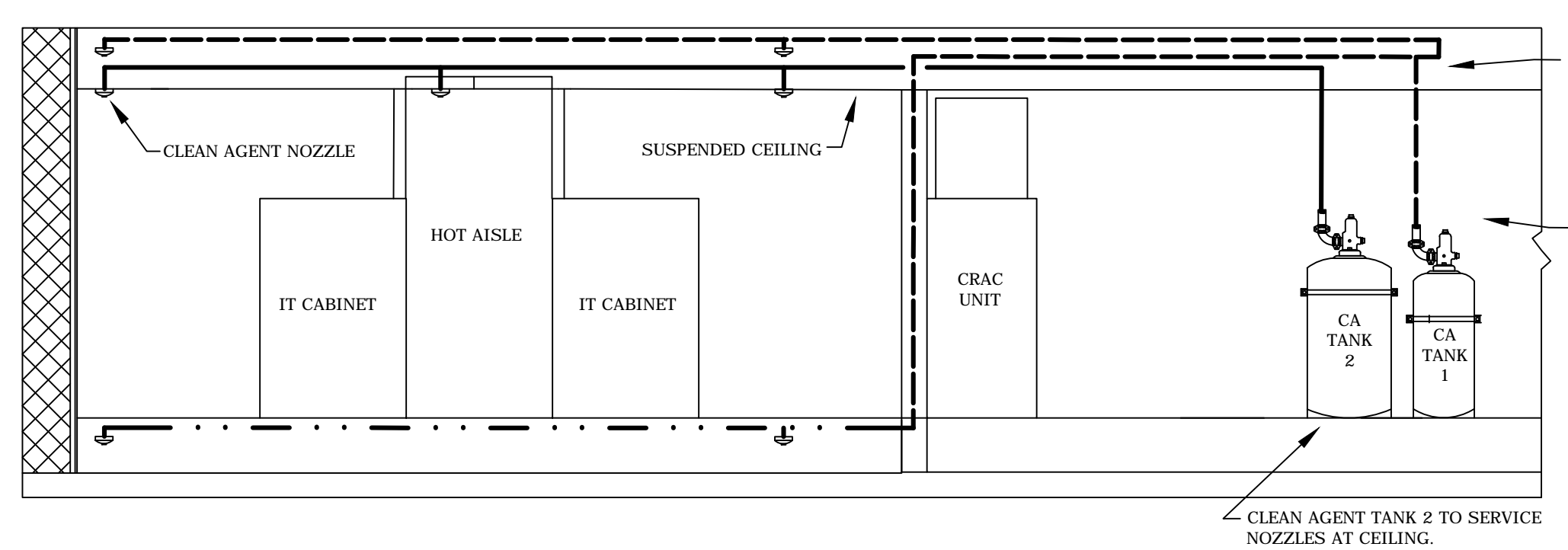
three inches = one foot
one and one half inches = one foot
one inch = one foot
three quarters inch = one foot
one half inch = one foot
three eighths inch = one foot
one quarter inch = one foot
one eighth inch = one foot



1 FIRST FLOOR CLEAN AGENT PLAN
SCALE: 1/4" = 1'-0"



2 FLOOR SECTION - EAST/WEST
SCALE: NOT TO SCALE



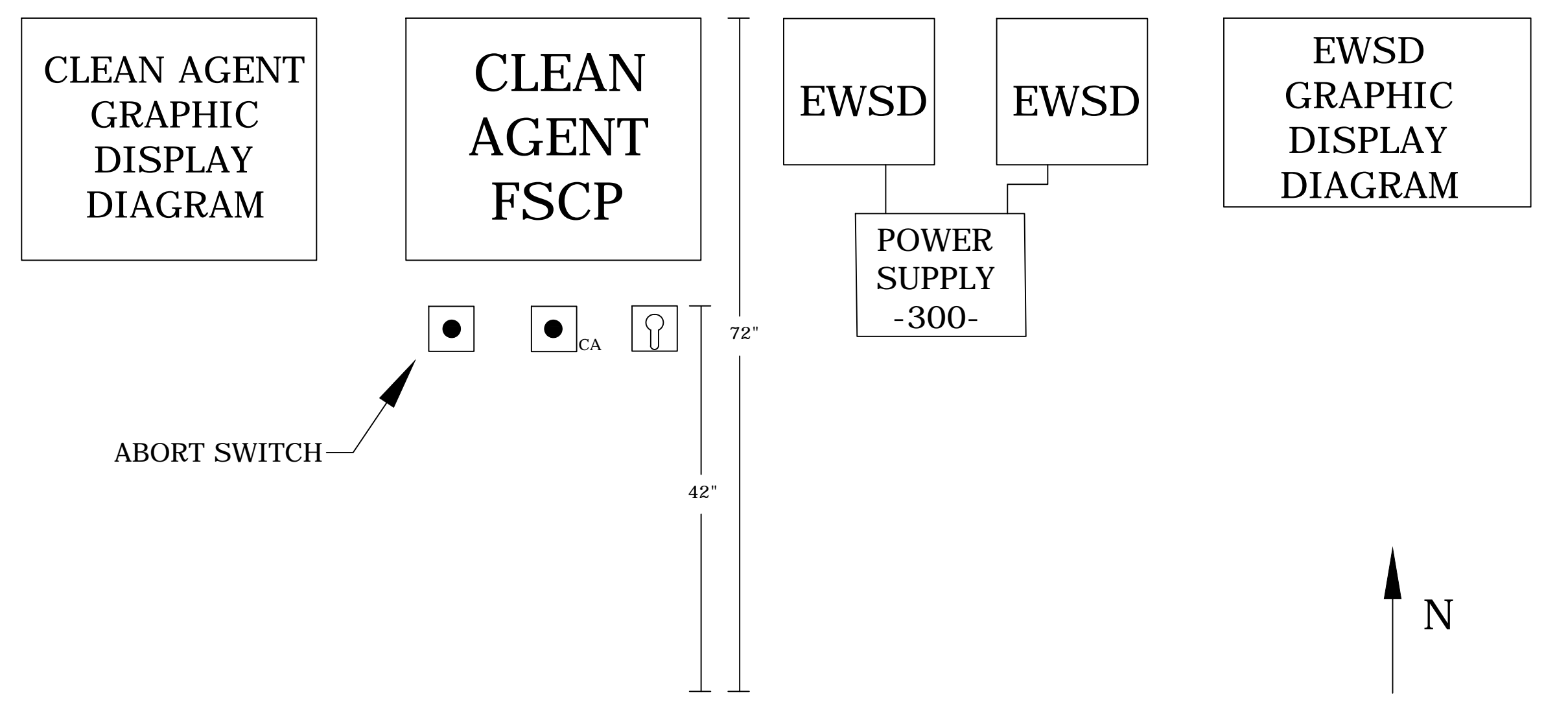
3 FLOOR SECTION - NORTH/SOUTH
SCALE: NOT TO SCALE

PIPE LEGEND	
	MAIN ROOM CLEAN AGENT PIPE
	UNDER FLOOR CLEAN AGENT PIPE
	ABOVE CEILING CLEAN AGENT PIPE

FIRE PROTECTION KEY NOTES	
F1	PROVIDE VESDA EARLY WARNING SMOKE DETECTION CONTROL PANEL (LASERPLUS). THIS DETECTOR MONITORS THE CEILING EARLY WARNING SAMPLING PORTS. PANEL MOUNTED ON WALL WITH TOP OF PANEL AT 6'-0" A.F.F.
F2	PROVIDE NEW ADDRESSABLE CLEAN AGENT CONTROL PANEL. TO BE UL CROSS-LISTED WITH CYLINDER SOLENOIDS. TOP OF CONTROL PANEL TO BE LOCATED AT 6'-0" A.F.F.
F3	PROVIDE SMOKE DETECTORS AT CEILING AND BELOW RAISED FLOOR FOR CLEAN AGENT SUPPRESSION SYSTEM. SMOKE DETECTORS TO BE SPACED AT A MAXIMUM OF 250 SQUARE FEET.
F4	PROVIDE CLEAN AGENT NOTIFICATION DEVICES.
F5	PROVIDE CLEAN AGENT MANUAL RELEASE STATION. ABORT STATION AND MAINTENANCE BY-PASS KEY SWITCH MOUNTED BELOW CONTROL PANEL.
F6	PROVIDE A DETAILED, DIMENSIONED AND SCALED ELEVATION DRAWING IN SHOP DRAWINGS INDICATING CONTROL PANEL, SWITCHES, DEVICES, EARLY WARNING SMOKE DETECTOR, BATTERY CABINETS AND ALARM ANNUNCIATION DEVICES AT THIS LOCATION FOR REVIEW.
F7	PROVIDE AIR SAMPLING HOLES DRILLED DIRECTLY INTO VESDA EARLY WARNING SMOKE DETECTION PIPE. SPACING AND NUMBER OF AIR SAMPLING HOLES SHALL BE DETERMINED BY THE CONTRACTOR AND AS REQUIRED BY MANUFACTURER.
F8	CLEAN AGENT REMOTE DISPLAY/CONTROL PANEL
F9	WIRE SPOT DETECTORS BACK TO FIRE SUPPRESSION CONTROL PANEL AS A SUB-SYSTEM TO THE BUILDING FIRE ALARM SYSTEM.

FIRE PROTECTION NOTES	
A.	PROVIDE SIGNAGE AT CONTROL PANELS. EACH ALARM ANNUNCIATION DEVICE, MANUAL RELEASE STATIONS, ABORT SWITCHES AND MAINTENANCE BY-PASS SWITCHES. SEE SPECIFICATIONS.
B.	PROVIDE ALARM MONITORING CONTACTS FOR EACH DETECTOR FOR INTERFACE BUILDING AUTOMATION SYSTEM (BAS) AND BUILDING FIRE ALARM (BFA).
C.	CONTRACTOR TO PROVIDE TRAINING SESSION (MINIMUM 4 HOURS THAT INCLUDES VIDEO/AUDIO).

FIRE PROTECTION LEGEND	
	FIRE SUPPRESSION CONTROL PANEL (FSCP)
	REMOTE DISPLAY
	ABORT SWITCH
	ALARM HORN & RED STROBE
	AMBER STROBE
	ALARM BELL
	MANUAL PULL STATION
	BYPASS KEY SWITCH



4 PANELS AND ANNUNCIATION DEVICES
SCALE: NOT TO SCALE

CONSTRUCTION DOCUMENTS 100%

No	REVISION	DATE



Alexandria
225 Broadway Street
Alexandria, MN 56308
phone 320.759.9030
fax 320.759.9062
www.jlgarchitects.com
copyright © 2013

STAMPED:
I HEREBY CERTIFY THAT THIS PLAN SPECIFICATION OR REPORT WAS PREPARED BY ME OR UNDER MY DIRECT SUPERVISION AND THAT I AM A QUALIFIED PROFESSIONAL ENGINEER UNDER THE LAWS OF THE STATE OF MINNESOTA.
CHRISTOPHER LEAVER
DATE: 12-03-2014
REG. NO. 40011

DRAWING TITLE
FIRST FLOOR CLEAN AGENT PLAN & SECTION DETAILS

PROJECT TITLE
CONSTRUCT NEW IT CENTER FOR HEALTH CARE TECHNOLOGY MANAGEMENT EXPANSION

BUILDING No	CHECKED BY	DRAWN
108	CL	RV

LOCATION
ST. CLOUD VA MCS
ST. CLOUD, MN 56303

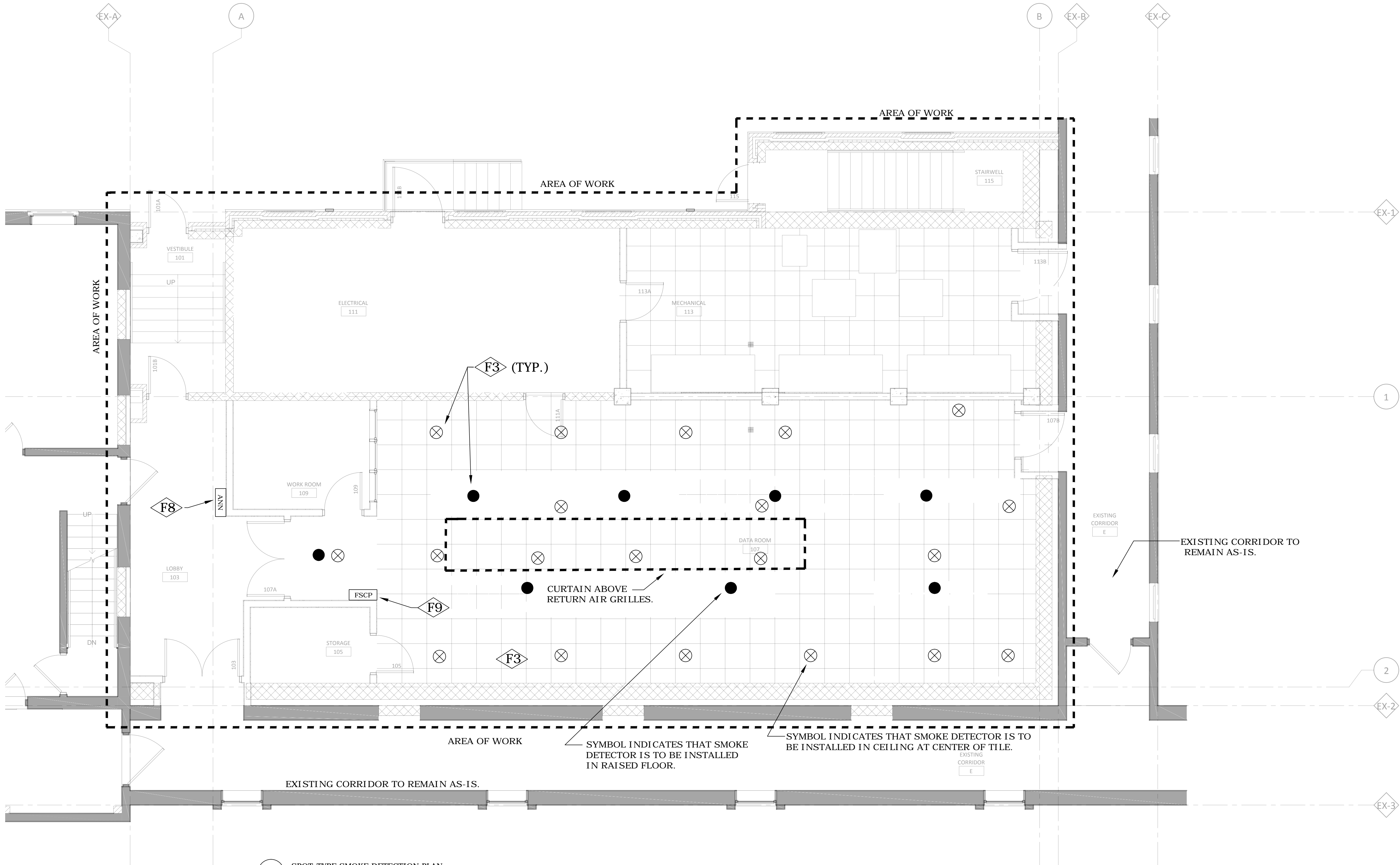
DATE
12.03.14

PROJECT NO.
656-14-246

CAD FILE
F102



three inches = one foot
one and one half inches = one foot
one inch = one foot
three quarters inch = one foot
one half inch = one foot
three eighths inch = one foot
one quarter inch = one foot
one eighth inch = one foot



1 SPOT-TYPE SMOKE DETECTION PLAN
SCALE : 1/4" = 1'-0"

FIRE PROTECTION KEY NOTES

- F1 PROVIDE VESDA EARLY WARNING SMOKE DETECTION CONTROL PANEL (LASERPLUS). THIS DETECTOR MONITORS THE CEILING EARLY WARNING SAMPLING PORTS. PANEL MOUNTED ON WALL WITH TOP OF PANEL AT 6'-0" A.F.F.
- F2 PROVIDE NEW ADDRESSABLE CLEAN AGENT CONTROL PANEL. TO BE UL CROSS-LISTED WITH CYLINDER SOLENOIDS. TOP OF CONTROL PANEL TO BE LOCATED AT 6'-0" A.F.F.
- F3 PROVIDE SMOKE DETECTORS AT CEILING AND BELOW RAISED FLOOR FOR CLEAN AGENT SUPPRESSION SYSTEM. SMOKE DETECTORS TO BE SPACED AT A MAXIMUM OF 250 SQUARE FEET.
- F4 PROVIDE CLEAN AGENT NOTIFICATION DEVICES.
- F5 PROVIDE CLEAN AGENT MANUAL RELEASE STATION. ABORT STATION AND MAINTENANCE BY-PASS KEY SWITCH MOUNTED BELOW CONTROL PANEL.
- F6 PROVIDE A DETAILED, DIMENSIONED AND SCALED ELEVATION DRAWING IN SHOP DRAWINGS INDICATING CONTROL PANEL, SWITCHES, DEVICES, EARLY WARNING SMOKE DETECTOR, BATTERY CABINETS AND ALARM ANNUNCIATION DEVICES AT THIS LOCATION FOR REVIEW.
- F7 PROVIDE AIR SAMPLING HOLES DRILLED DIRECTLY INTO VESDA EARLY WARNING SMOKE DETECTION PIPE. SPACING AND NUMBER OF AIR SAMPLING HOLES SHALL BE DETERMINED BY THE CONTRACTOR AND AS REQUIRED BY MANUFACTURER.
- F8 CLEAN AGENT REMOTE DISPLAY/CONTROL PANEL.
- F9 WIRE SPOT DETECTORS BACK TO FIRE SUPPRESSION CONTROL PANEL AS A SUB-SYSTEM TO THE BUILDING FIRE ALARM SYSTEM.

FIRE PROTECTION NOTES

- A. PROVIDE SIGNAGE AT CONTROL PANELS, EACH ALARM ANNUNCIATION DEVICE, MANUAL RELEASE STATIONS, ABORT SWITCHES AND MAINTENANCE BY-PASS SWITCHES. SEE SPECIFICATIONS.
- B. PROVIDE ALARM MONITORING CONTACTS FOR EACH DETECTOR FOR INTERFACE BUILDING AUTOMATION SYSTEM (BAS) AND BUILDING FIRE ALARM (BFA).

FIRE PROTECTION LEGEND

- ⊗ SMOKE DETECTOR AT CEILING
- SMOKE DETECTOR IN RAISED FLOOR
- FSCP FIRE SUPPRESSION CONTROL PANEL (FSCP)
- ANN REMOTE DISPLAY

CONSTRUCTION DOCUMENTS 100%

No	REVISION	DATE



STAMP/SEAL
I HEREBY CERTIFY THAT THIS PLAN, SPECIFICATION OR REPORT WAS PREPARED BY ME OR UNDER MY DIRECT SUPERVISION AND THAT I AM A duly LICENSED PROFESSIONAL ENGINEER UNDER THE LAWS OF THE STATE OF MINNESOTA.
CHRISTOPHER LEAVER
DATE: 12-03-2014
REG. NO. 46011

DRAWING TITLE
SPOT-TYPE SMOKE DETECTION PLAN

PROJECT TITLE
CONSTRUCT NEW IT CENTER FOR HEALTH CARE TECHNOLOGY MANAGEMENT EXPANSION

BUILDING No 108
CHECKED BY CL
DRAWN BY RV
LOCATION ST. CLOUD VA HCS, ST. CLOUD, MN 56303

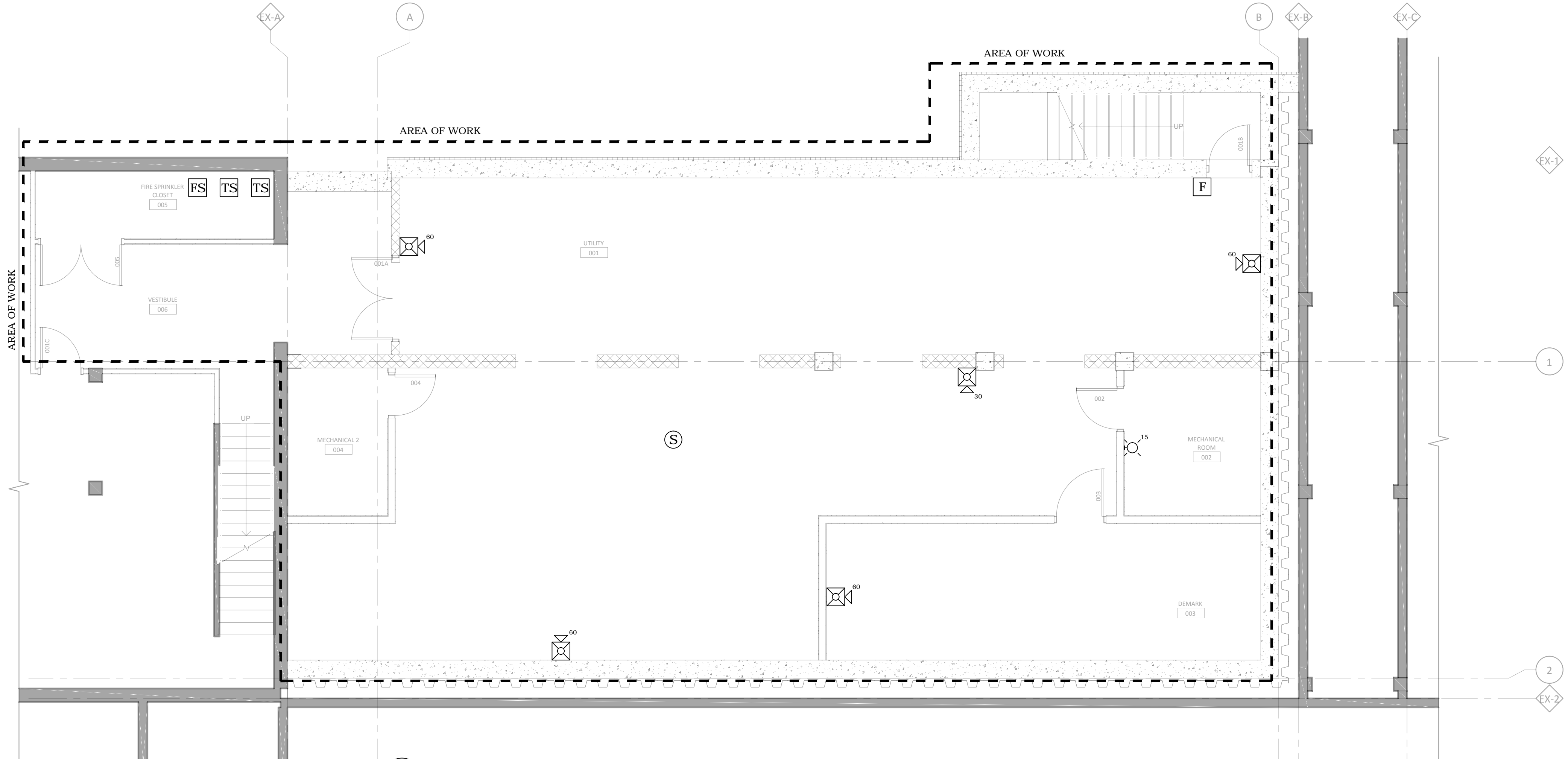
DATE 12.03.14
PLOT SCALE AS NOTED
PROJECT NO. 656-14-246

CAD FILE
DRAWING NO. F103

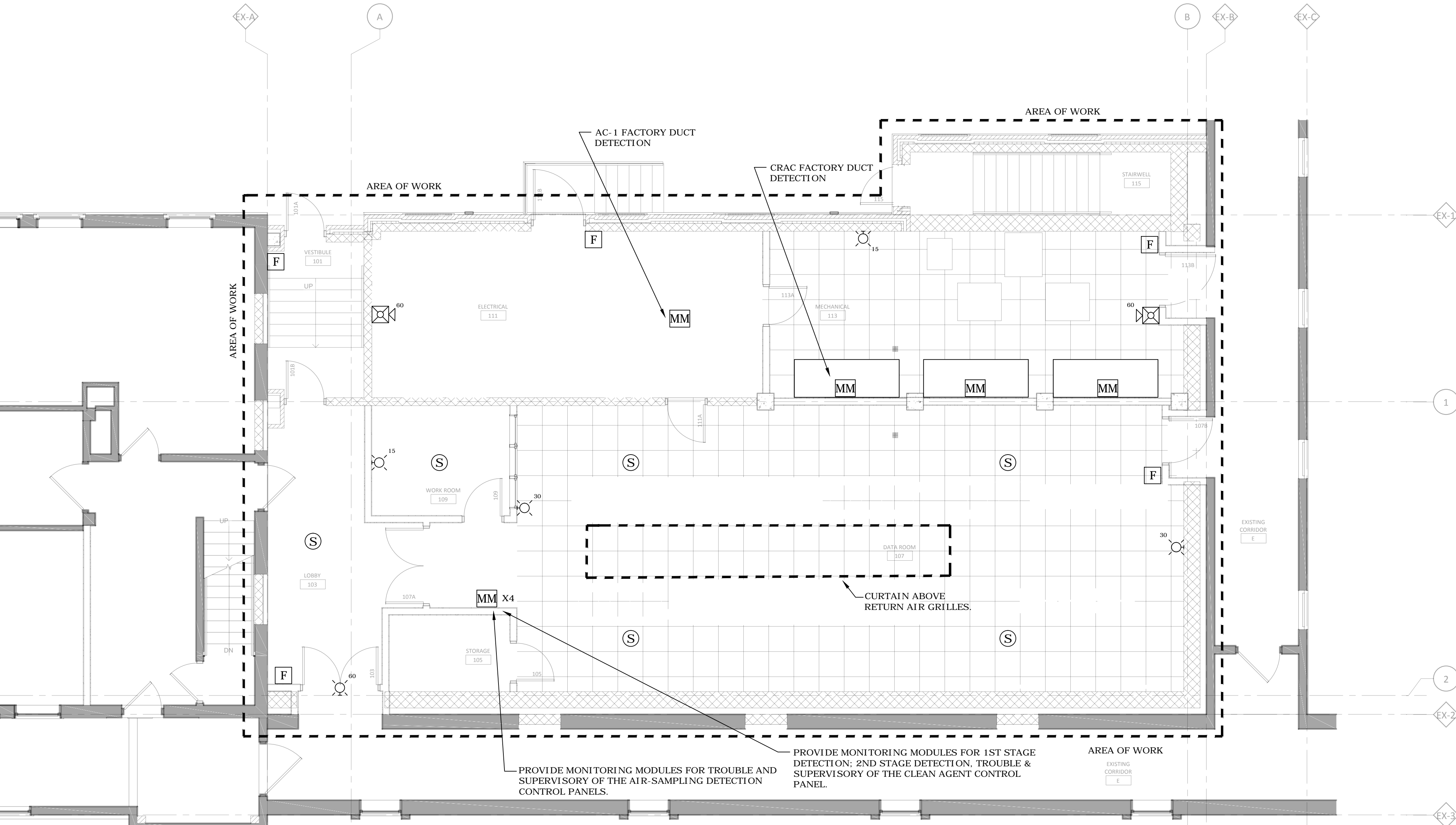


JLG 130708

three inches = one foot
one and one half inches = one foot
one inch = one foot
three quarters inch = one foot
one half inch = one foot
three eighths inch = one foot
one quarter inch = one foot
one eighth inch = one foot



1 BASEMENT FIRE ALARM PLAN
SCALE: 3/16" = 1'-0"



2 FIRST LEVEL FIRE ALARM PLAN
SCALE: 3/16" = 1'-0"

SHEET NOTES

- ALL DEVICES SHOWN ON THIS SHEET ARE NEW EQUIPMENT TO BE CONNECTED TO THE EXISTING BUILDING FIRE ALARM SYSTEM.
- ALL NEW FIRE ALARM DEVICES MUST BE COMPATIBLE AND THE SAME MANUFACTURER AS THE EXISTING BUILDING FIRE ALARM SYSTEM.
- CONTRACTOR REQUIRED TO PROVIDE ALL NECESSARY EQUIPMENT TO PROVIDE A FULLY FUNCTIONAL SYSTEM EVEN IF NOT SHOWN ON DRAWINGS, INCLUDING BUT NOT LIMITED TO EXPANSION MODULES, POWER SUPPLIES, RELAYS, ETC.

FIRE ALARM INDICATING DEVICE LEGEND

	WALL MOUNTED STROBE LIGHT - SUPERScript INDICATES DESIGN INTENSITY
	COMBINATION SPEAKER & STROBE - SUPERScript INDICATES DESIGN INTENSITY
	SPEAKER - CEILING MOUNTED
	FIRE ALARM MANUAL PULL STATION
	TAMPER SWITCH
	FLOW SWITCH
	ADDRESSABLE MONITORING MODULE

BUILDING 4 FIRE ALARM CONTROL PANEL

EVENT	ACTION AT BUILDING 4 FIRE ALARM CONTROL PANEL										ACTION AT BUILDING 7 MAIN FIRE ALARM CONTROL PANEL									
	ANNUNCIATE ON BUILDING 4 FIRE ALARM PANEL	ANNUNCIATE ON BUILDING 4 REMOTE ANNUNCIATOR PANEL	BROADCAST GENERAL EVACUATION TONE - BUILDING 4 SPEAKERS	ACTIVATE BUILDING 4 STROBES	CLOSE BUILDING 4 SMOKE DOORS ON ALL LEVELS	RECALL ELEVATOR - DESIGNATED LEVEL	RECALL ELEVATOR - ALTERNATE LEVEL	START ELEVATOR TRAVEL TIMER (WHERE APPLICABLE)	SHUTDOWN ELEVATOR POWER	ACTIVATE ELEVATOR IN - CAR NOTIFICATION	SHUTDOWN ASSOCIATED AIR HANDLER	ANNUNCIATE ON BUILDING 7 MAIN FIRE ALARM CONTROL PANEL ANNUNCIATOR	ANNUNCIATE ON BUILDING 7 NETWORK PRINTER	ANNUNCIATE ON BUILDING 7 NETWORK GRAPHIC CONTROL STATION	ANNUNCIATOR and BUILDING 1/1A MAIN FIRE ALARM CONTROL PANEL	ANNUNCIATOR and BUILDING 1/1A REMOTE ANNUNCIATOR PANEL	ACTIVATE PAGER SYSTEM OUTPUT	ACTIVATE BUILDING 7 NETWORK ALARM NOTIFICATION APPLIANCE	ACTIVATE BUILDING 7 DACT ALARM DACT OUTPUT	ACTIVATE BUILDING 7 DACT SUPERVISORY OUTPUT
BUILDING 4 WATERFLOW SWITCH ACTIVATION	•	•	•	•	•	•	•	•	•	•	•	•	•	•	•	•	•	•	•	•
BUILDING 4 MANUAL PULL STATION ACTIVATION	•	•	•	•	•	•	•	•	•	•	•	•	•	•	•	•	•	•	•	•
BUILDING 4 SMOKE DETECTOR ACTIVATION	•	•	•	•	•	•	•	•	•	•	•	•	•	•	•	•	•	•	•	•
BUILDING 4 HEAT DETECTOR ACTIVATION	•	•	•	•	•	•	•	•	•	•	•	•	•	•	•	•	•	•	•	•
BUILDING 4 KITCHEN HOOD EXTINGUISHING SYSTEM ACTIVATION	•	•	•	•	•	•	•	•	•	•	•	•	•	•	•	•	•	•	•	•
BUILDING 4 ELEVATOR E03 BASEMENT LOBBY SMOKE DETECTOR ACTIVATION	•	•	•	•	•	•	•	•	•	•	•	•	•	•	•	•	•	•	•	•
BUILDING 4 ELEVATOR E03 FIRST FLOOR LOBBY SMOKE DETECTOR ACTIVATION	•	•	•	•	•	•	•	•	•	•	•	•	•	•	•	•	•	•	•	•
BUILDING 4 ELEVATOR E03 SECOND FLOOR LOBBY SMOKE DETECTOR ACTIVATION	•	•	•	•	•	•	•	•	•	•	•	•	•	•	•	•	•	•	•	•
BUILDING 4 ELEVATOR MACHINE ROOM SMOKE DETECTOR ACTIVATION	•	•	•	•	•	•	•	•	•	•	•	•	•	•	•	•	•	•	•	•
BUILDING 4 ELEVATOR MACHINE ROOM HEAT DETECTOR ACTIVATION	•	•	•	•	•	•	•	•	•	•	•	•	•	•	•	•	•	•	•	•
BUILDING 4 DUCT SMOKE DETECTOR ACTIVATION	•	•	•	•	•	•	•	•	•	•	•	•	•	•	•	•	•	•	•	•
BUILDING 4 VALVE TAMPER SWITCH ACTIVATION	•	•	•	•	•	•	•	•	•	•	•	•	•	•	•	•	•	•	•	•
BUILDING 4 SUPERVISORY AIR PRESSURE SWITCH ACTIVATION	•	•	•	•	•	•	•	•	•	•	•	•	•	•	•	•	•	•	•	•
BUILDING 4 ELEVATOR SHUNT POWER SUPERVISION	•	•	•	•	•	•	•	•	•	•	•	•	•	•	•	•	•	•	•	•
BUILDING 4 PANEL OR CIRCUIT TROUBLE CONDITION	•	•	•	•	•	•	•	•	•	•	•	•	•	•	•	•	•	•	•	•
BUILDING 4 CLEAN AGENT 1ST STAGE SMOKE DETECTOR (SUPERVISORY)	•	•	•	•	•	•	•	•	•	•	•	•	•	•	•	•	•	•	•	•
BUILDING 4 CLEAN AGENT 2ND STAGE SMOKE DETECTOR (ALARM)	•	•	•	•	•	•	•	•	•	•	•	•	•	•	•	•	•	•	•	•
BUILDING 4 CLEAN AGENT DISCHARGE ALARM	•	•	•	•	•	•	•	•	•	•	•	•	•	•	•	•	•	•	•	•
BUILDING 4 CLEAN AGENT CONTROL PANEL TROUBLE	•	•	•	•	•	•	•	•	•	•	•	•	•	•	•	•	•	•	•	•
BUILDING 4 CLEAN AGENT CONTROL PANEL SUPERVISORY	•	•	•	•	•	•	•	•	•	•	•	•	•	•	•	•	•	•	•	•
BUILDING 4 AIR SAMPLING CONTROL PANEL TROUBLE	•	•	•	•	•	•	•	•	•	•	•	•	•	•	•	•	•	•	•	•
BUILDING 4 AIR SAMPLING CONTROL PANEL SUPERVISORY	•	•	•	•	•	•	•	•	•	•	•	•	•	•	•	•	•	•	•	•

CONSTRUCTION DOCUMENTS 100%

No	REVISION	DATE



STAMPED:
I HEREBY CERTIFY THAT THIS PLAN SPECIFICATION OR REPORT WAS PREPARED BY ME OR UNDER MY DIRECT SUPERVISION AND THAT I AM A duly LICENSED PROFESSIONAL ENGINEER UNDER THE LAWS OF THE STATE OF MINNESOTA.
CHRISTOPHER LEAVER
DATE: 12-03-2014
REG. NO. 46011

DRAWING TITLE
BASEMENT & FIRST LEVEL
FIRE ALARM PLAN

PROJECT TITLE
CONSTRUCT NEW IT CENTER
FOR HEALTH CARE
TECHNOLOGY MANAGEMENT
EXPANSION
BUILDING No 108
LOCATION ST. CLOUD VA HCS
ST. CLOUD, MN 56303
DATE 12.03.14
PROJECT NO 656-14-246
CHECKED BY CL
DRAWN BY RV
CADD FILE
DRAWING NO. F104

