



# Veterans Health Administration

---

VA246-16-Q-0743

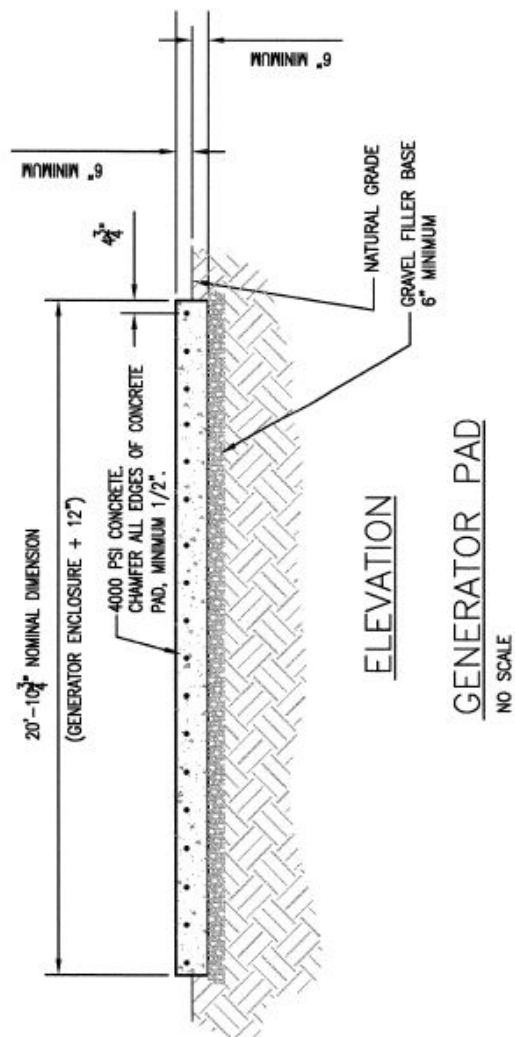
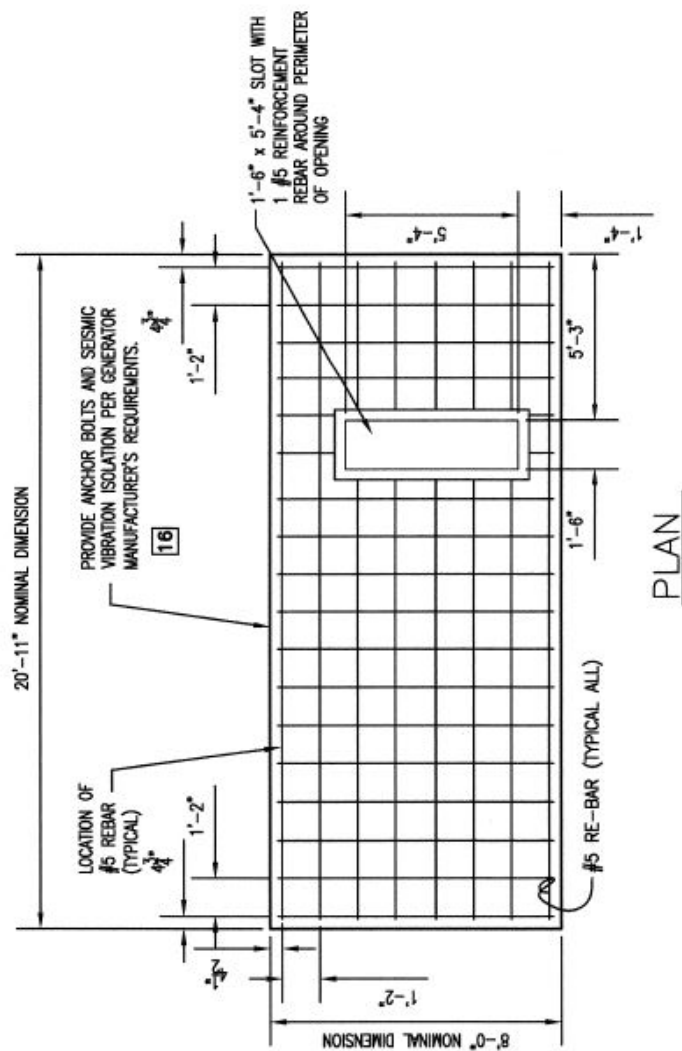
Replace Building 2 Generator

## Drawing Details

April 7, 2016

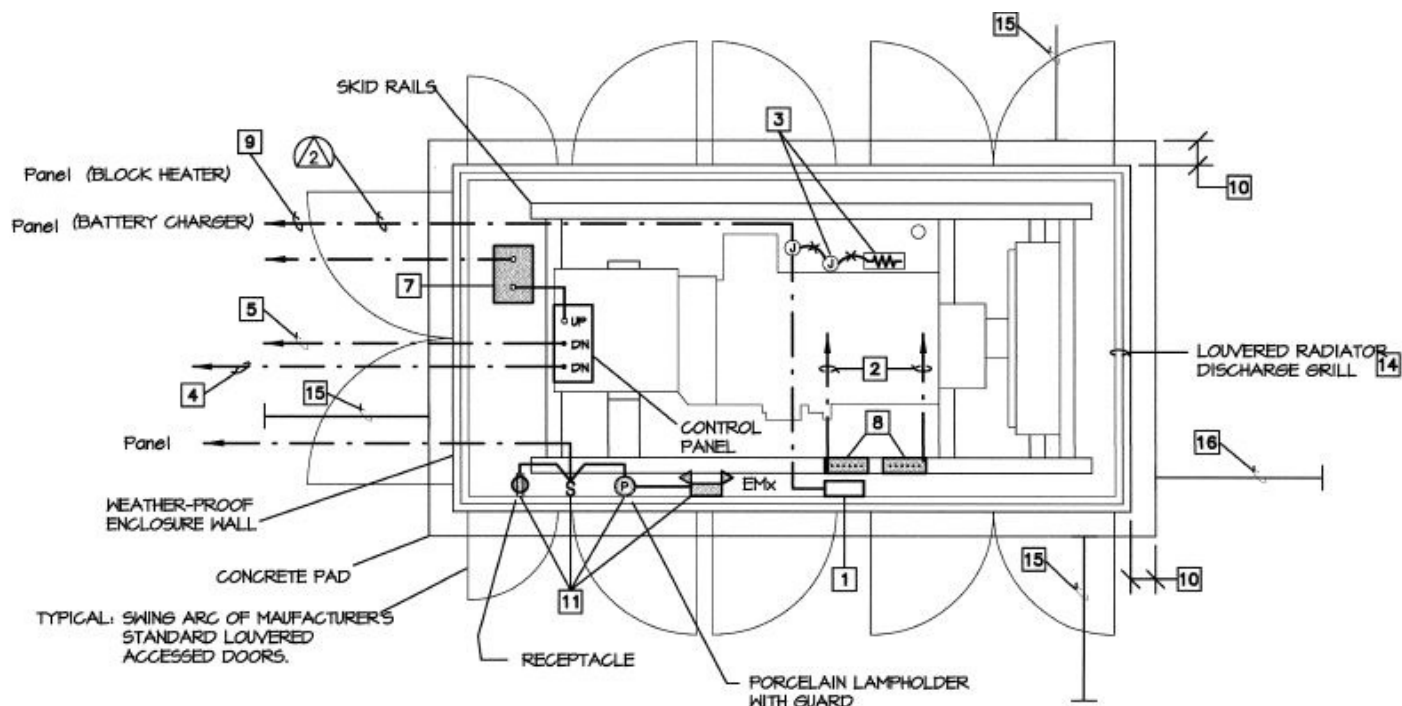
*Salem Veterans Affairs Medical Center*

### Drawing Details



## GENERAL NOTES

1. DESIGN BASED ON FIRM ORIGINAL EARTH AT A MAXIMUM ALLOWING BEARING PRESSURE OF 1000 LBS. PER SQUARE FOOT.
2. MINIMUM CLEARANCE ABOVE GRADE IS 6". MINIMUM DEPTH BELOW GRADE IS 6". PAD TO BE UNIFORM THICKNESS THROUGHOUT AND CROWNED 1/8" FOOT IN SHORT DIMENSION TO PREVENT PONDING.
3. CONCRETE PAD TO BE DIMENSIONED PER GENERATOR SHOP DRAWING SUBMITTAL. PAD SHALL BE A MINIMUM OF 6" (EACH FACE) LARGER THAN GENERATOR ENCLOSURE.

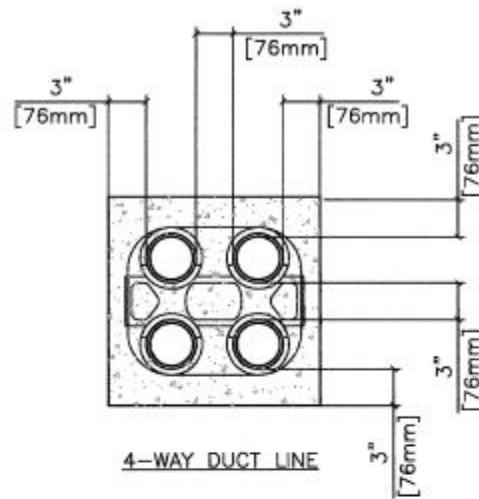


NOTES:

- 1 BATTERY CHARGER FURNISHED WITH GENERATOR SET.
- 2 CONNECT BATTERY CABLES TO STARTER CIRCUIT.
- 3 CONNECT HEATER CIRCUIT TO JACKET HEATER AND THERMOSTAT.
- 4 START SIGNAL CIRCUIT FROM AUTOMATIC TRANSFER SWITCH(ES).
- 5 TO REMOTE GENERATOR ANNUNCIATOR PANEL, AS DIRECTED BY OWNER. (VERIFY CONDUIT).
- 6 COORDINATE PAD STUB-UPS WITH VENDOR AND ALL TRADES.
- 7 GENERATOR CIRCUIT BREAKER DISCONNECT.
- 8 ENGINE STARTER BATTERIES FURNISHED WITH GENERATOR SET.
- 9 BLOCK HEATER AND BATTERY CHARGER CIRCUITS AS INDICATED.
- 10 CONCRETE PAD TO BE MINIMUM 6" BEYOND WEATHERPROOF ENCLOSURE ON ALL SIDES.
- 11 SERVICE LIGHT (AND SWITCH), RECEPTACLE AND UNIT EQUIPMENT BATTERY LIGHT IN HOUSING, LOCATION PER VENDOR'S DRAWINGS. FOR MAXIMUM ACCESSIBILITY.
- 12 NOT USED
- 13 NOT USED
- 14 RADIATOR DISCHARGE AWAY FROM BUILDING.
- 15 MINIMUM 5'-0" CLEAR TO BACK AND SIDES OF GENERATOR.
- 16 MINIMUM 20' CLEAR IN FRONT OF RADIATOR.

## EMERGENCY GENERATOR DETAIL

NO SCALE



### DUCT BANK NOTES:

1. CONCRETE SHALL BE 2000 P.S.I. @ 28 DAYS, OR AS SPECIFIED.
2. PROVIDE REINFORCING RODS ON TOP AND BOTTOM OF DUCTS WHEN CROSSING OR PLACED IN ROADWAYS.
3. MINIMUM COVER TO TOP OF ENVELOPE SHALL BE 24" [610mm].
4. PROVIDE MINIMUM 6" [152mm] SPACE BETWEEN POWER AND TELECOMMUNICATION DUCTS. INCREASE SIZE AS REQUIRED.
5. INNERDUCT QUANTITY AND SIZE AS INDICATED ON PLANS.

### DUCT BANK DETAILS

NTS