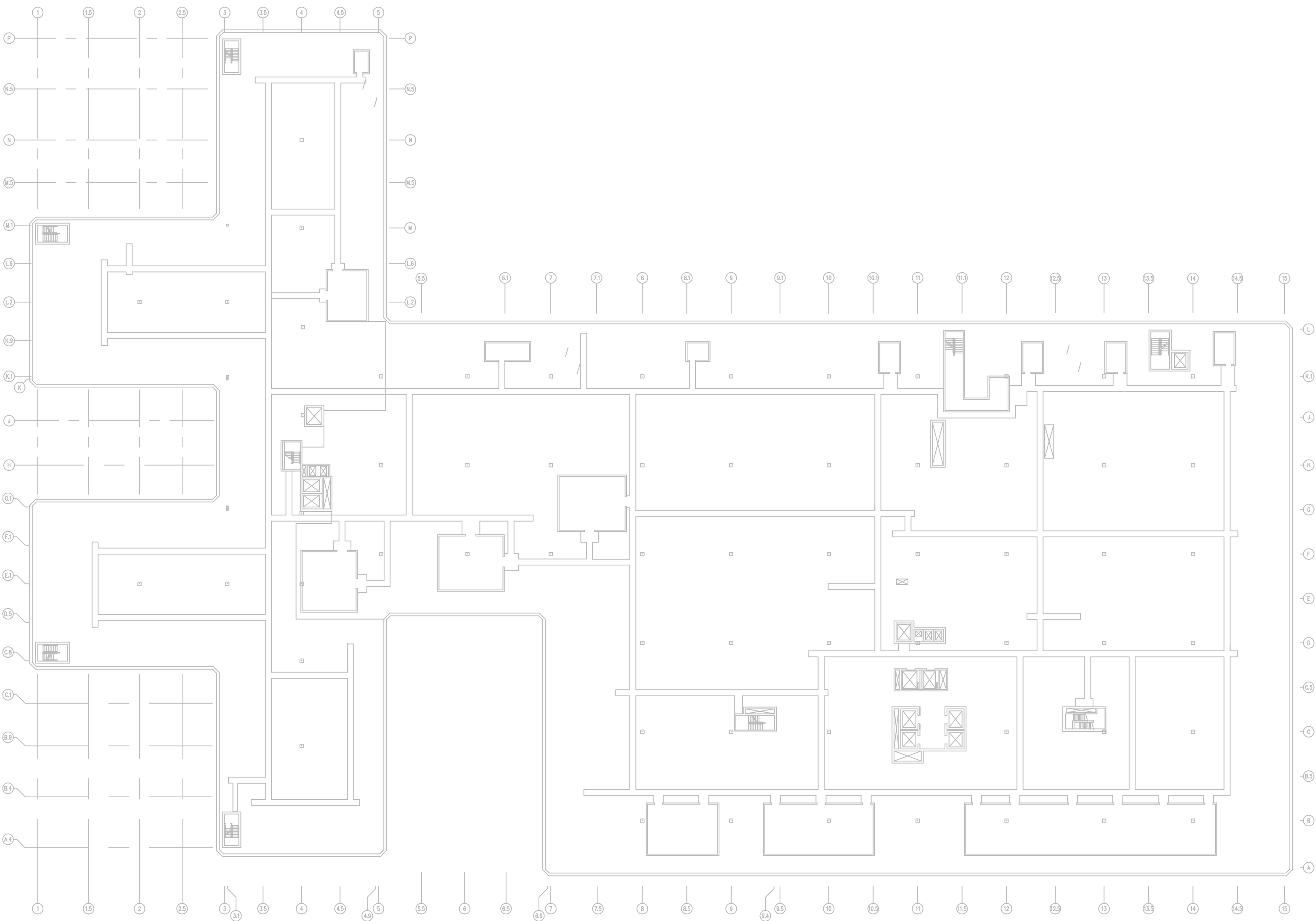
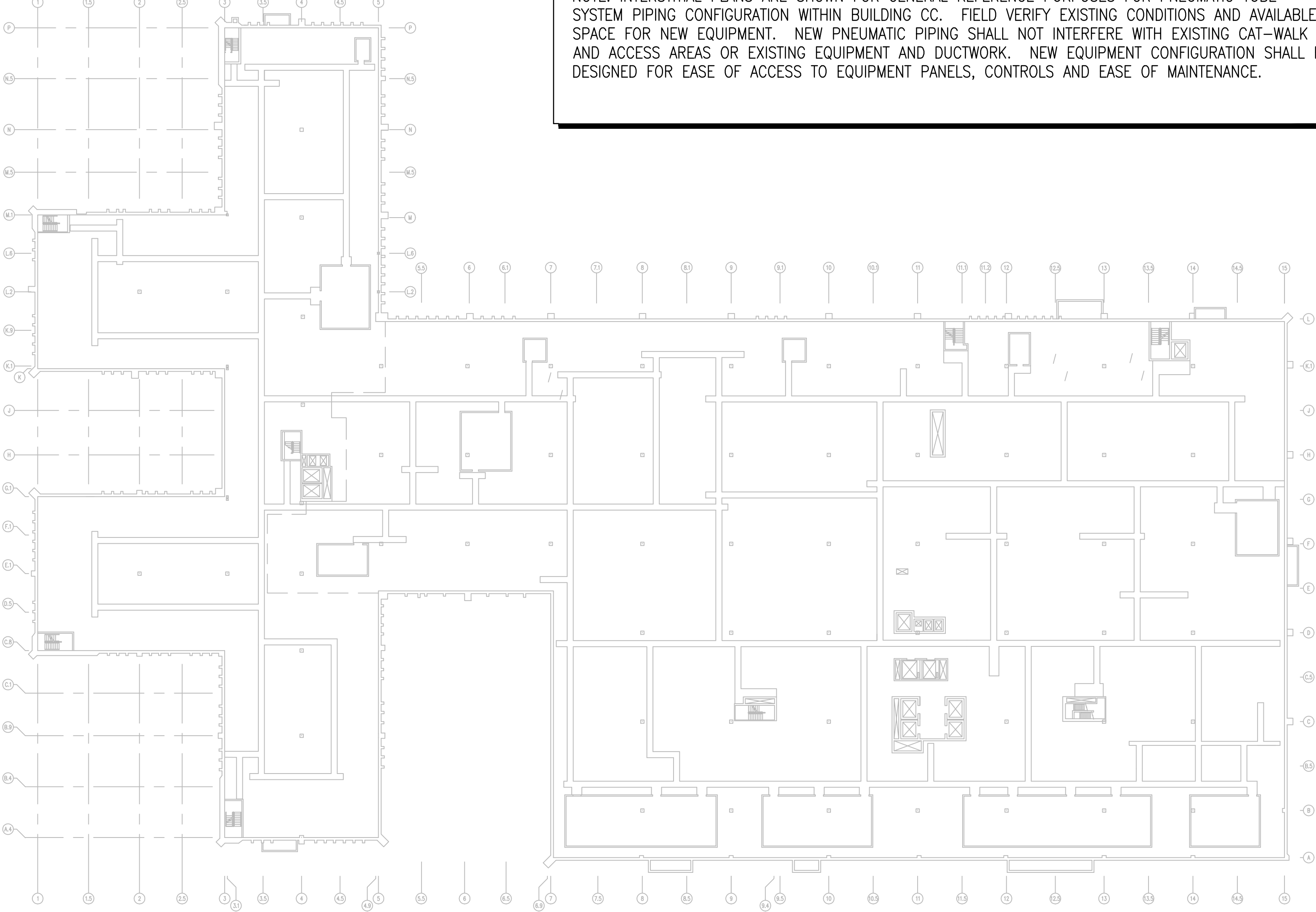


three-eighths inch = one foot
one-eighth inch = one foot
one-quarter inch = one foot
three-eighths inch = one foot
one-half inch = one foot
one inch = one foot
one and one-half inches = one foot
two inches = one foot
three inches = one foot



C1 SECOND FLOOR INTERSTITIAL PLAN, BLDG. CC
SCALE: 1" = 40'-0"



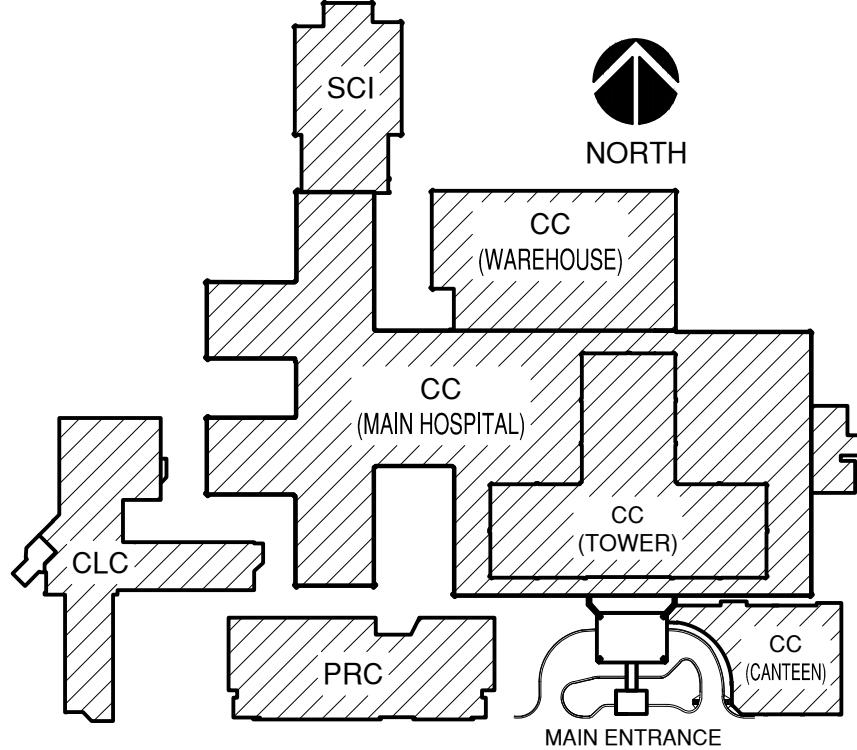
F1 FIRST FLOOR INTERSTITIAL PLAN, BLDG. CC
SCALE: 1" = 40'-0"



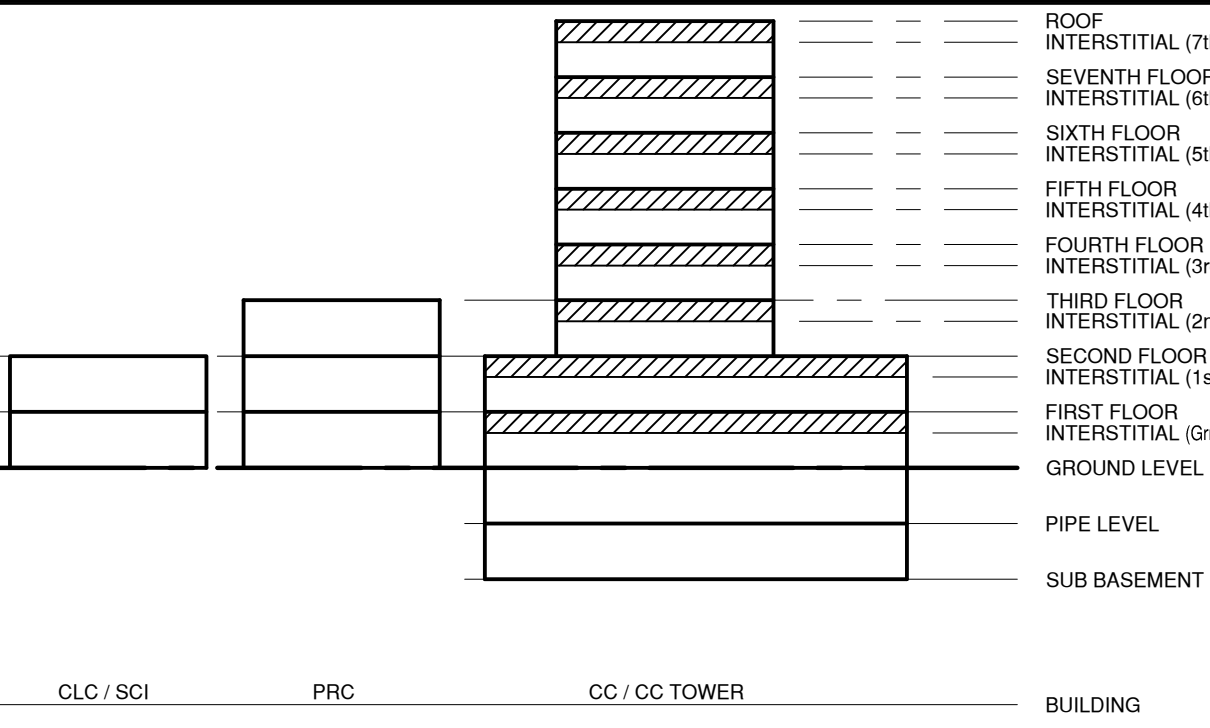
NOTE: INTERSTITIAL PLANS ARE SHOWN FOR GENERAL REFERENCE PURPOSES FOR PNEUMATIC TUBE SYSTEM PIPING CONFIGURATION WITHIN BUILDING CC. FIELD VERIFY EXISTING CONDITIONS AND AVAILABLE SPACE FOR NEW EQUIPMENT. NEW PNEUMATIC PIPING SHALL NOT INTERFERE WITH EXISTING CAT-WALK AND ACCESS AREAS OR EXISTING EQUIPMENT AND DUCTWORK. NEW EQUIPMENT CONFIGURATION SHALL BE DESIGNED FOR EASE OF ACCESS TO EQUIPMENT PANELS, CONTROLS AND EASE OF MAINTENANCE.

- GENERAL NOTES**
- A. FIELD VERIFY ALL DIMENSIONS.
- B. COORDINATE ALL WORK AND PROJECT SCHEDULING WITH VA SAFETY, INFECTION CONTROL AND POLICE DEPARTMENTS.
- C. PROJECT CONSISTS OF FACILITY WIDE PNEUMATIC TUBE SYSTEM (PTS) INSTALLATION TO THE VA SAN ANTONIO AUDIE L. MURPHY VA HOSPITAL. AFFECTED BUILDINGS ARE AS FOLLOWS:
BUILDING CC, HOSPITAL & ADMINISTRATION, SEVEN FLOORS
BUILDING CLC, COMMUNITY LIVING CENTER, TWO FLOORS
BUILDING PRC, POLYTRAUMA REHABILITATION CENTER, THREE FLOORS
- D. PROJECT SCOPE OF WORK (SOW) INCLUDES INSTALLATION OF A NEW PNEUMATIC TUBE SYSTEM THROUGHOUT THE HOSPITAL FACILITY. SCOPE SHALL INCLUDE THE FOLLOWING:
1. INSTALLATION OF NEW GALVANIZED STEEL PNEUMATIC TUBING SUSPENDED FROM EXISTING STRUCTURE WITHIN INTERSTITIAL SPACES.
2. INSTALLATION OF PNEUMATIC BLOWER UNITS.
3. INSTALLATION OF PNEUMATIC TRANSFER UNITS.
4. INSTALLATION OF PNEUMATIC TERMINAL UNITS.
5. INSTALLATION OF PNEUMATIC ACCESSORIES SUCH AS CARRIER STORAGE UNITS AND ARRIVAL INDICATORS.
6. ELECTRICAL UPGRADES TO ACCOMMODATE NEW EQUIPMENT.
7. SELECT DEMOLITION.
8. NEW FRAMING AND PARTITIONS FOR TERMINAL UNITS.
9. NEW ARCHITECTURAL FINISHES.
- E. THE INTERSTITIAL EQUIPMENT CONFIGURATION LAYOUT IS FOR REFERENCE PURPOSES ONLY. SPECIFIC PLACEMENT OF PNEUMATIC PIPING, TRANSFER UNITS, BLOWERS, VALVES HANGERS AND ASSOCIATED EQUIPMENT IS DEPENDANT UPON SPECIFIC MANUFACTURER'S REQUIREMENTS. COORDINATE EQUIPMENT PLACEMENT AND PNEUMATIC PIPING LAYOUT WITH SELECTED PNEUMATIC EQUIPMENT MANUFACTURER.

BUILDING KEY PLAN SCALE: NONE



BUILDING FLOOR ELEVATION DIAGRAM SCALE: NONE



BUILDING LEGEND

- BUILDING CC: MAIN HOSPITAL
BUILDING PRC: POLYTRAUMA REHABILITATION CENTER
BUILDING CLC: COMMUNITY LIVING CENTER
BUILDING SCI: SPINAL CORD INJURY

100% CONSTRUCTION ISSUE

 2201 N. Collins, Suite 205 Arlington, Texas 76011-2055 (817) 461-5337 Fax: (817) 461-1025 MECHANICAL • ELECTRICAL • PLUMBING Fratro Engineering Inc. FEI Project No.: 13069	 Architecture • Planning • Interior Design 4949 Addison Circle • Addison, Texas 75001 MPI Project No.: 8130707			Drawing Title BUILDING CC FIRST & SECOND FLOOR INTERSTITIAL PLANS		Project Title AUDIE L. MURPHY VA HOSPITAL PNEUMATIC TUBE SYSTEM UPGRADE		Date 4/24/15			
				Approved: Area Project Manager		Building Number CC		Checked DJD	Drawn AR/DC	Project No. 671-13-104	
						Location 7400 Merton Minter San Antonio, TX 78229		Drawing No. A110		Dwg. of	
				Revisions		Date					

VA FORM 08-6231A, JAN 1990