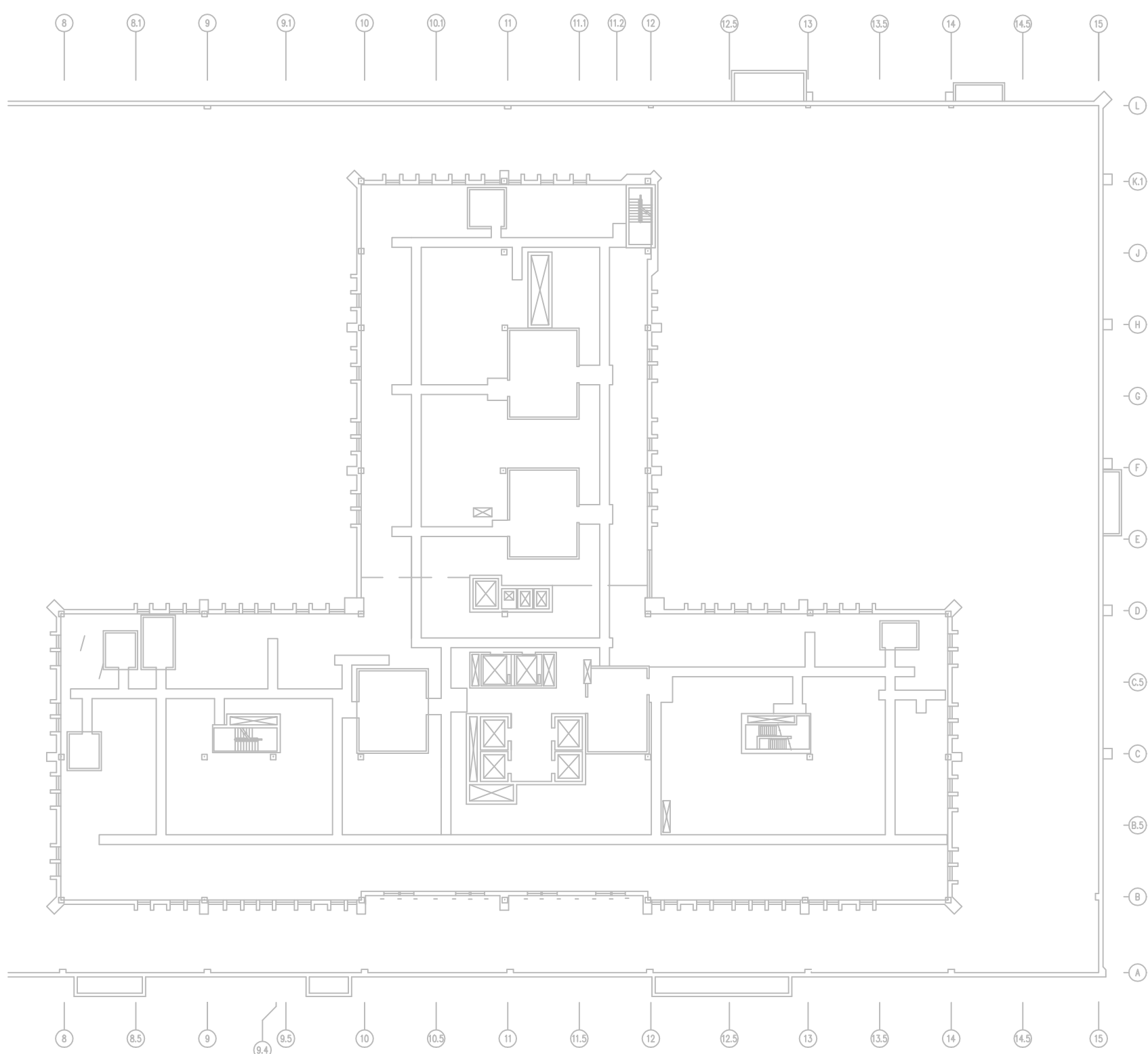
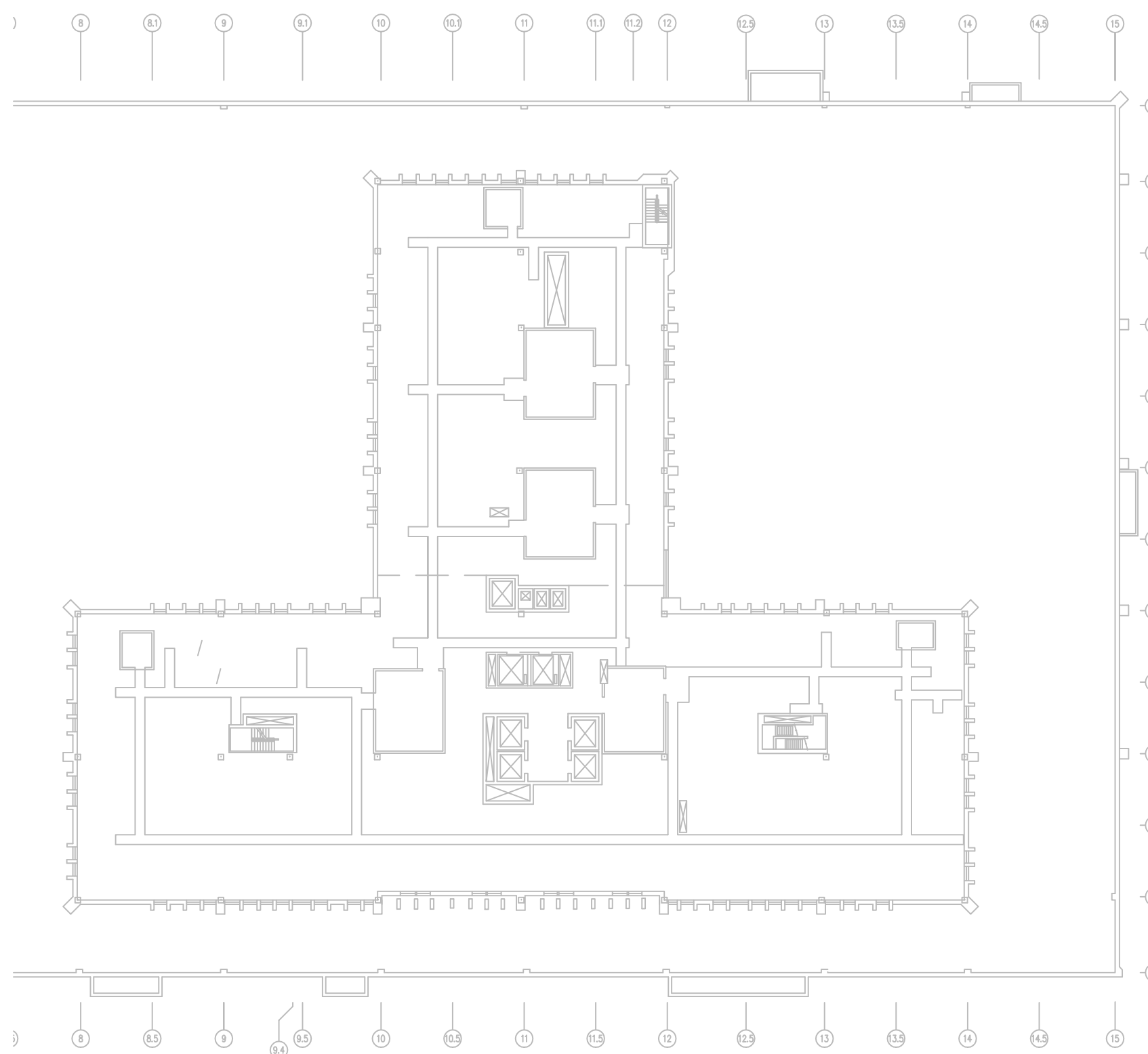


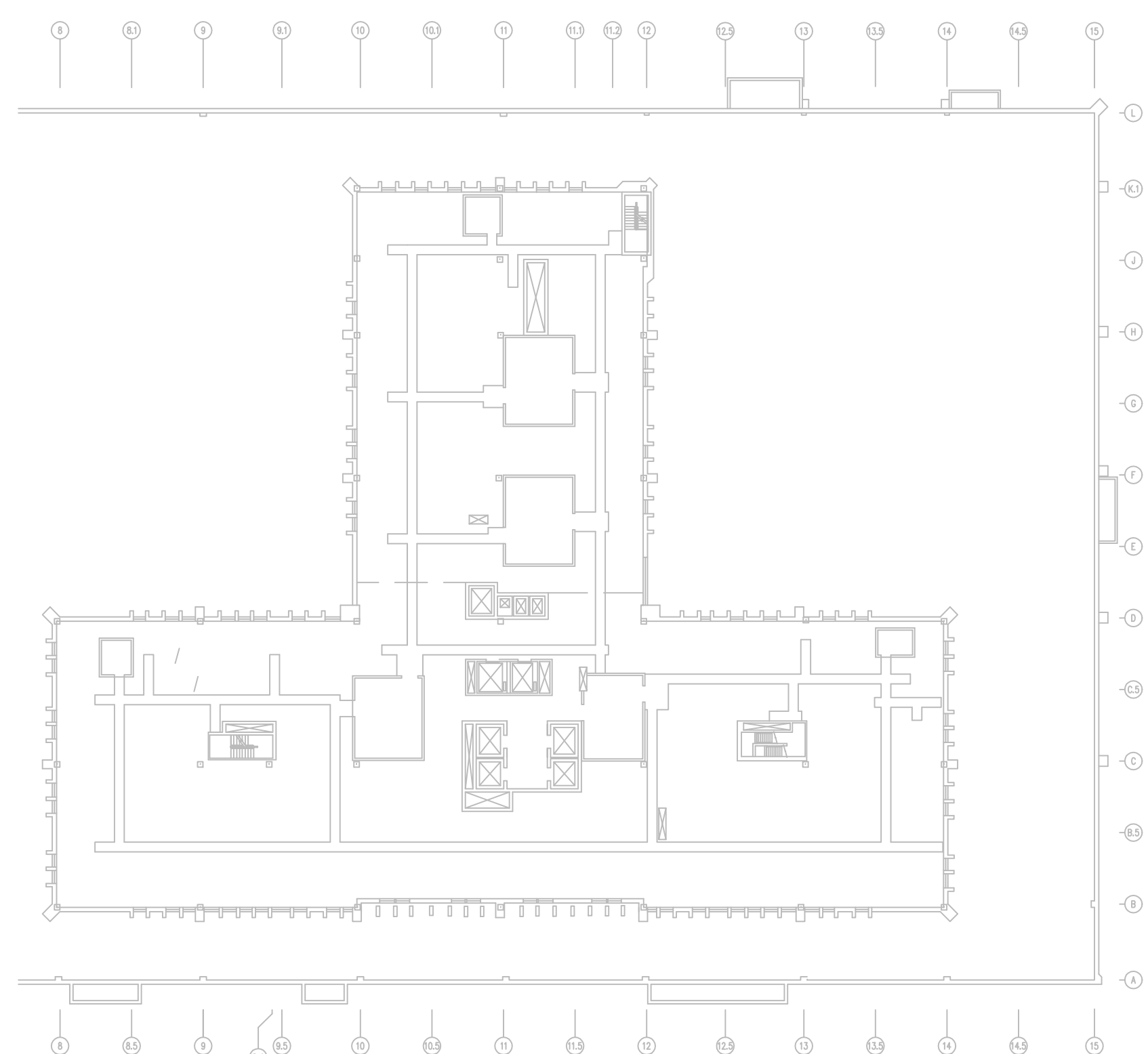
three-eighths inch = one foot
one-eighth inch = one foot
one-quarter inch = one foot
three-eighths inch = one foot
one-half inch = one foot
one inch = one foot
one and one-half inches = one foot
two inches = one foot
three inches = one foot
four inches = one foot
six inches = one foot
eight inches = one foot
ten inches = one foot
twelve inches = one foot
fifteen inches = one foot
twenty inches = one foot
twenty-four inches = one foot



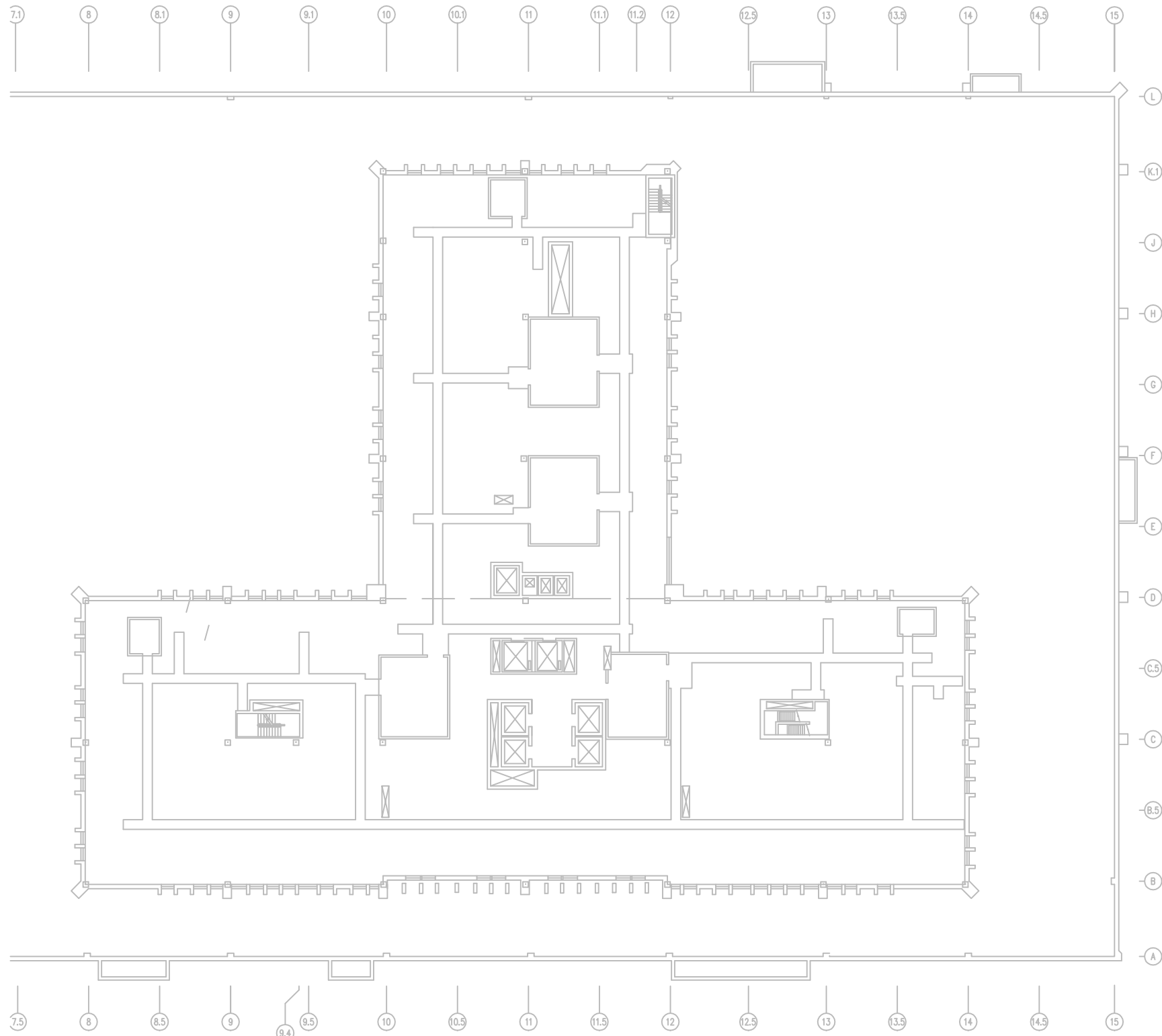
C1 THIRD FLOOR INTERSTITIAL PLAN, BLDG. CC
SCALE: 1" = 40'-0"
NORTH



C4 FOURTH FLOOR INTERSTITIAL PLAN, BLDG. CC
SCALE: 1" = 40'-0"
NORTH

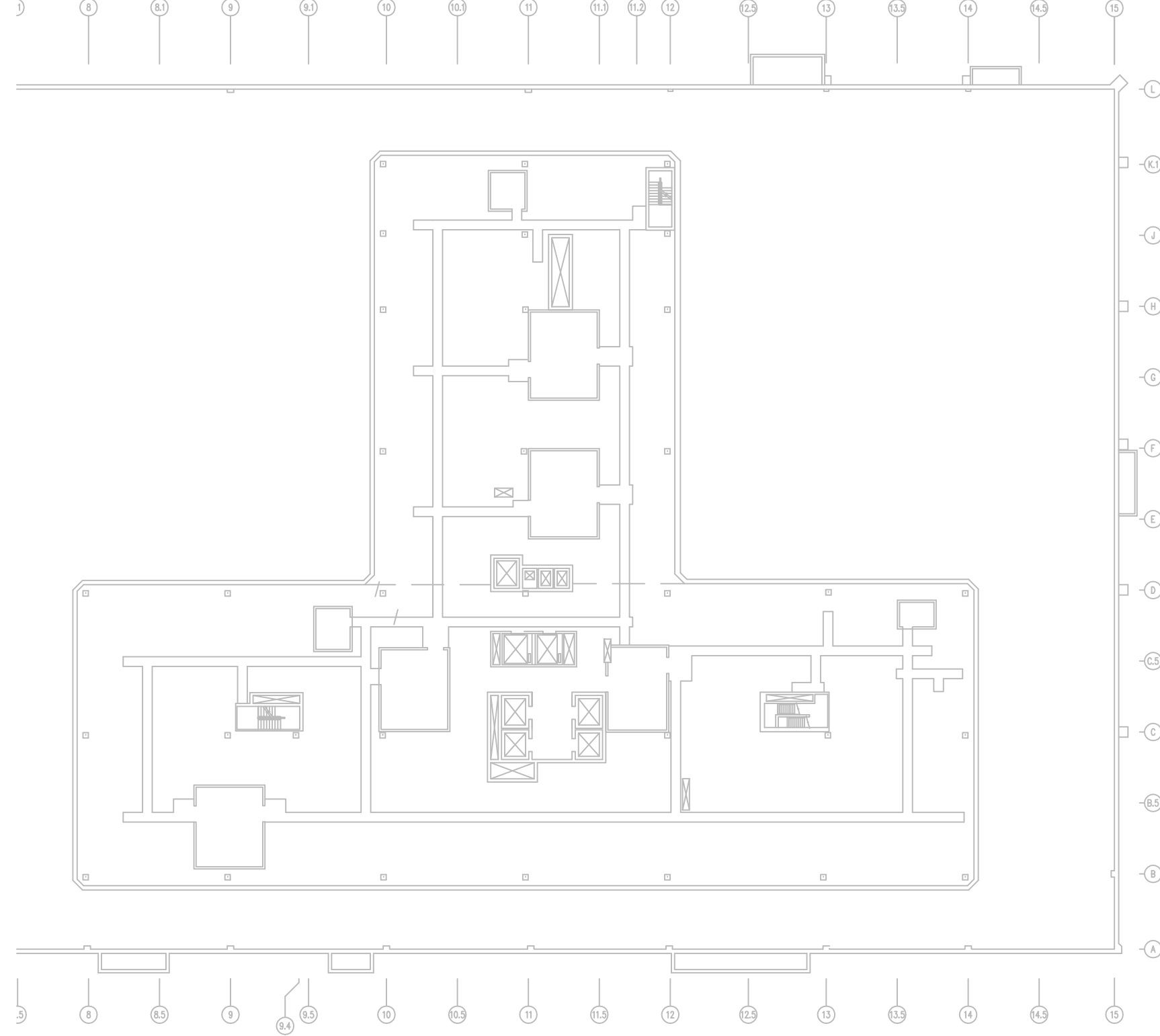


C7 FIFTH FLOOR INTERSTITIAL PLAN, BLDG. CC
SCALE: 1" = 40'-0"
NORTH



F1 SIXTH FLOOR INTERSTITIAL PLAN, BLDG. CC
SCALE: 1" = 40'-0"
NORTH

NOTE: INTERSTITIAL PLANS ARE SHOWN FOR GENERAL REFERENCE PURPOSES FOR PNEUMATIC TUBE SYSTEM PIPING CONFIGURATION WITHIN BUILDING CC. FIELD VERIFY EXISTING CONDITIONS AND AVAILABLE SPACE FOR NEW EQUIPMENT. NEW PNEUMATIC PIPING SHALL NOT INTERFERE WITH EXISTING CAT-WALK AND ACCESS AREAS OR EXISTING EQUIPMENT AND DUCTWORK. NEW EQUIPMENT CONFIGURATION SHALL BE DESIGNED FOR EASE OF ACCESS TO EQUIPMENT PANELS, CONTROLS AND EASE OF MAINTENANCE.



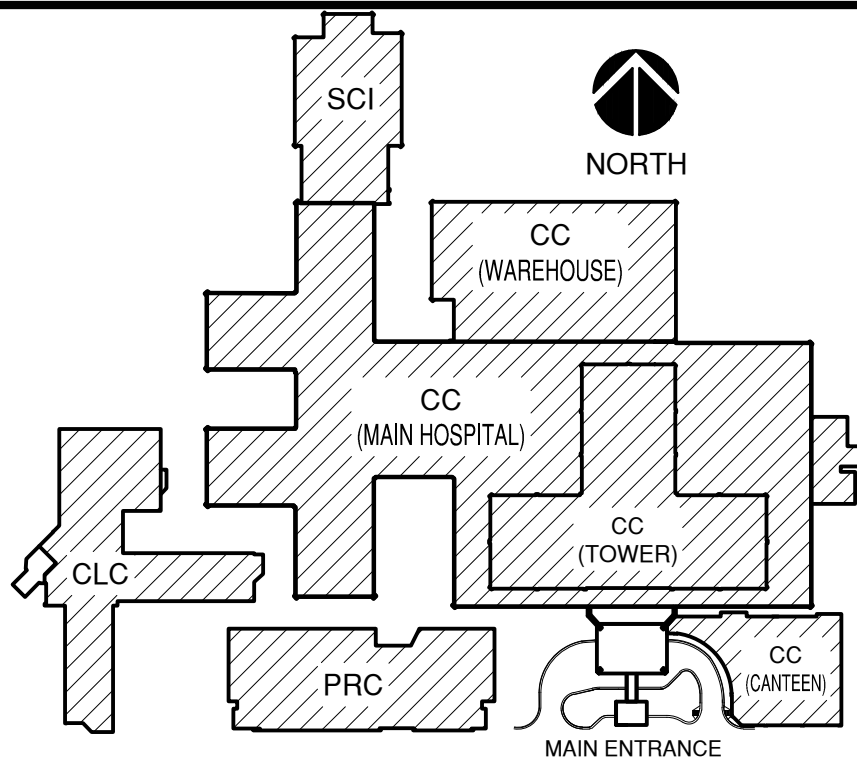
F5 SEVENTH FLOOR INTERSTITIAL PLAN, BLDG. CC
SCALE: 1" = 40'-0"
NORTH

GENERAL NOTES

- A. FIELD VERIFY ALL DIMENSIONS.
- B. COORDINATE ALL WORK AND PROJECT SCHEDULING WITH VA SAFETY, INFECTION CONTROL AND POLICE DEPARTMENTS.
- C. PROJECT CONSISTS OF FACILITY WIDE PNEUMATIC TUBE SYSTEM (PTS) INSTALLATION TO THE VA SAN ANTONIO AUDIE L. MURPHY VA HOSPITAL. AFFECTED BUILDINGS ARE AS FOLLOWS:
BUILDING CC, HOSPITAL & ADMINISTRATION, SEVEN FLOORS
BUILDING CLC, COMMUNITY LIVING CENTER, TWO FLOORS
BUILDING PRC, POLYTRAUMA REHABILITATION CENTER, THREE FLOORS
- D. PROJECT SCOPE OF WORK (SOW) INCLUDES INSTALLATION OF A NEW PNEUMATIC TUBE SYSTEM THROUGHOUT THE HOSPITAL FACILITY. SCOPE SHALL INCLUDE THE FOLLOWING:
1. INSTALLATION OF NEW GALVANIZED STEEL PNEUMATIC TUBING SUSPENDED FROM EXISTING STRUCTURE WITHIN INTERSTITIAL SPACES.
2. INSTALLATION OF PNEUMATIC BLOWER UNITS.
3. INSTALLATION OF PNEUMATIC TRANSFER UNITS.
4. INSTALLATION OF PNEUMATIC TERMINAL UNITS.
5. INSTALLATION OF PNEUMATIC ACCESSORIES SUCH AS CARRIER STORAGE UNITS AND ARRIVAL INDICATORS.
6. ELECTRICAL UPGRADES TO ACCOMMODATE NEW EQUIPMENT.
7. SELECT DEMOLITION.
8. NEW FRAMING AND PARTITIONS FOR TERMINAL UNITS.
9. NEW ARCHITECTURAL FINISHES.
- E. THE INTERSTITIAL EQUIPMENT CONFIGURATION LAYOUT IS FOR REFERENCE PURPOSES ONLY. SPECIFIC PLACEMENT OF PNEUMATIC PIPING, TRANSFER UNITS, BLOWERS, VALVES HANGERS AND ASSOCIATED EQUIPMENT IS DEPENDANT UPON SPECIFIC MANUFACTURER'S REQUIREMENTS. COORDINATE EQUIPMENT PLACEMENT AND PNEUMATIC PIPING LAYOUT WITH SELECTED PNEUMATIC EQUIPMENT MANUFACTURER.

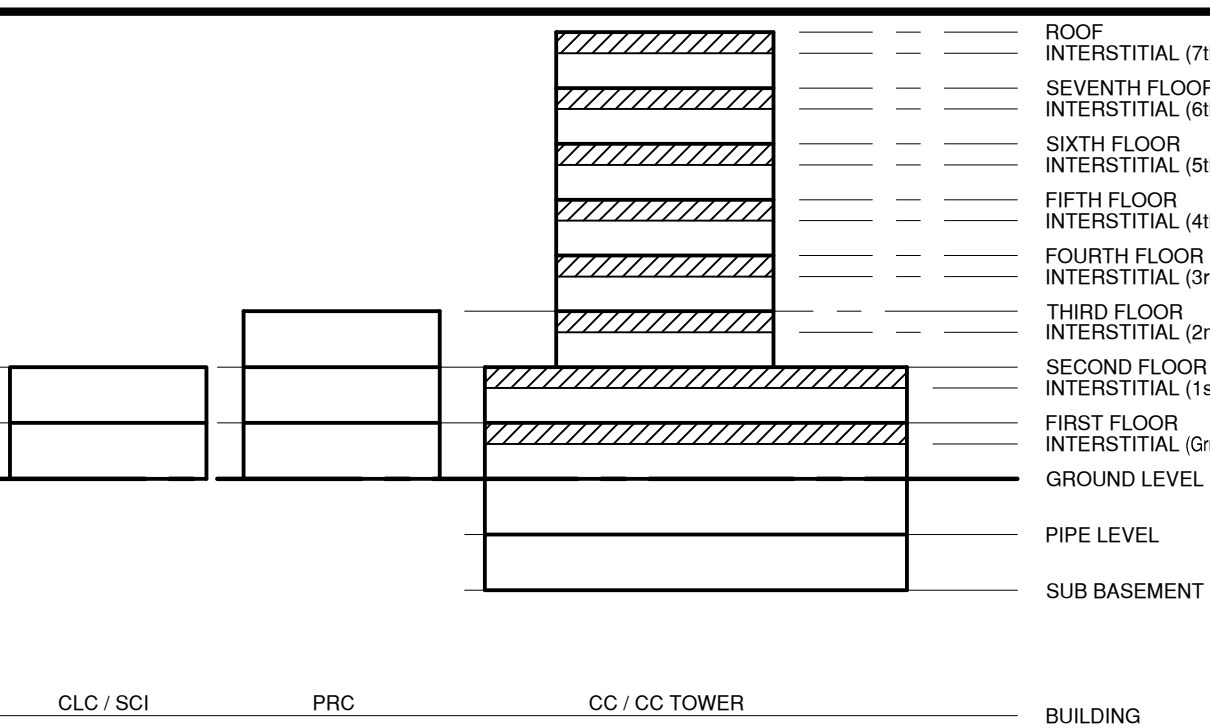
BUILDING KEY PLAN

SCALE: NONE



BUILDING FLOOR ELEVATION DIAGRAM

SCALE: NONE



BUILDING LEGEND

- BUILDING CC: MAIN HOSPITAL
BUILDING PRC: POLYTRAUMA REHABILITATION CENTER
BUILDING CLC: COMMUNITY LIVING CENTER
BUILDING SCI: SPINAL CORD INJURY

100% CONSTRUCTION ISSUE

Revisions Date	FEI Project No.: 13069	MPI Architects Architecture ■ Planning ■ Interior Design 4949 Addison Circle ■ Addison, Texas 75001 MPI Project No.: 8130707	Seal ARCHITECT STATE OF TEXAS 1059 4/24/15	Seal	Drawing Title BUILDING CC THIRD THRU SEVENTH FLOOR INTERSTITIAL PLANS Approved: Area Project Manager	Project Title AUDIE L. MURPHY VA HOSPITAL PNEUMATIC TUBE SYSTEM UPGRADE	Date 4/24/15 Project No. 671-13-104	Drawing No. A111 Dwg. of	South Texas Veterans Health Care System	STVHCS San Antonio, Texas