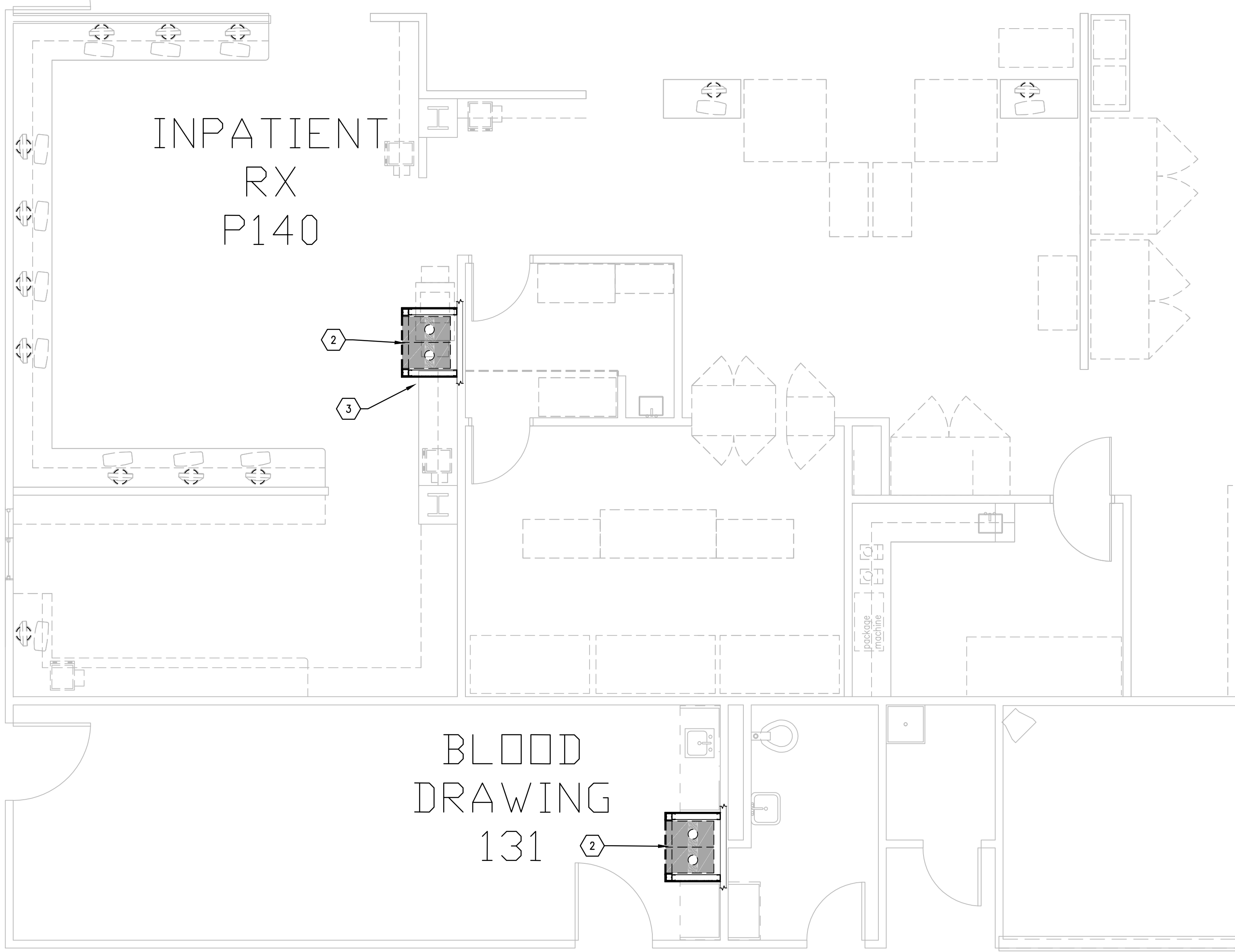
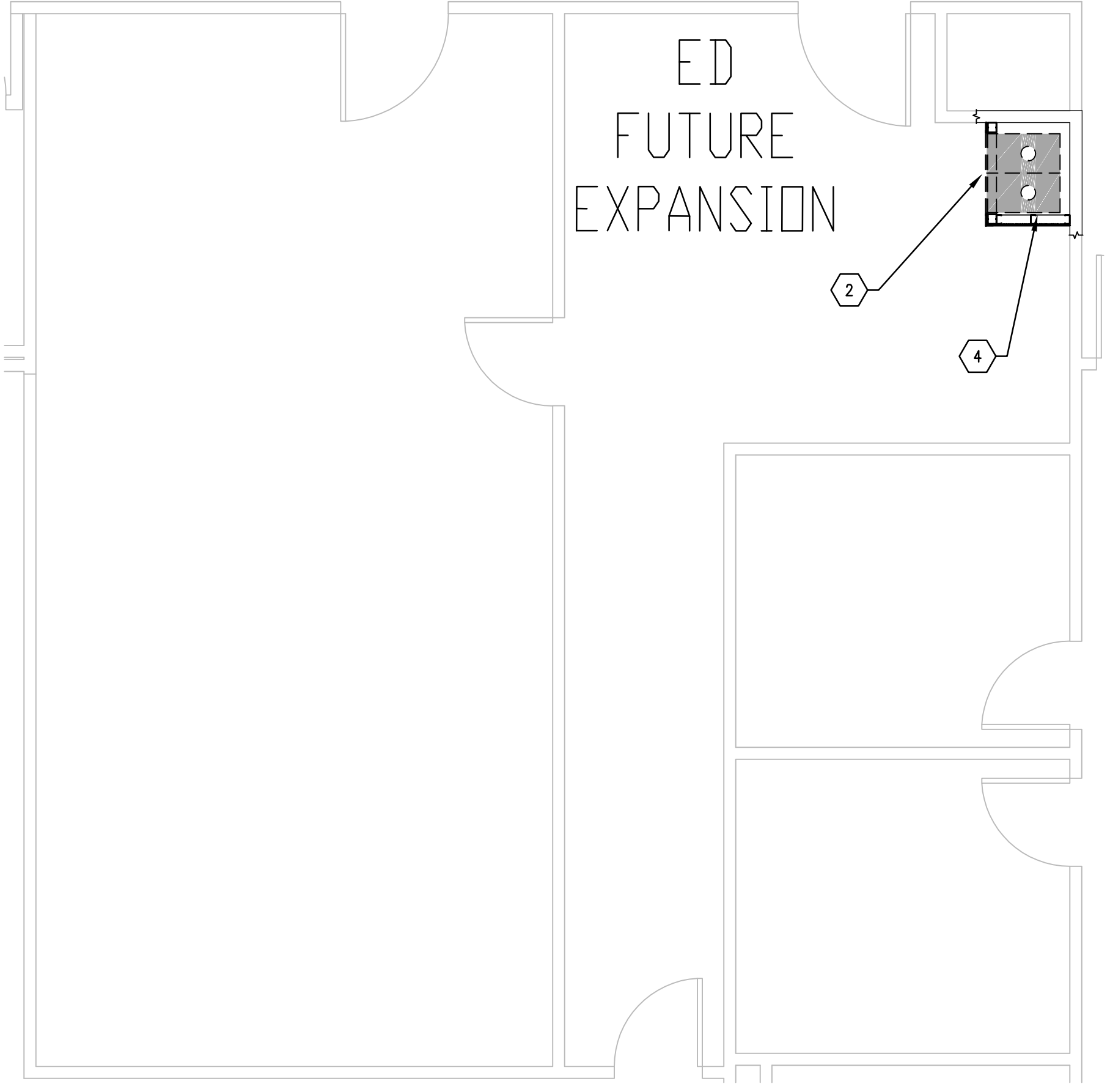


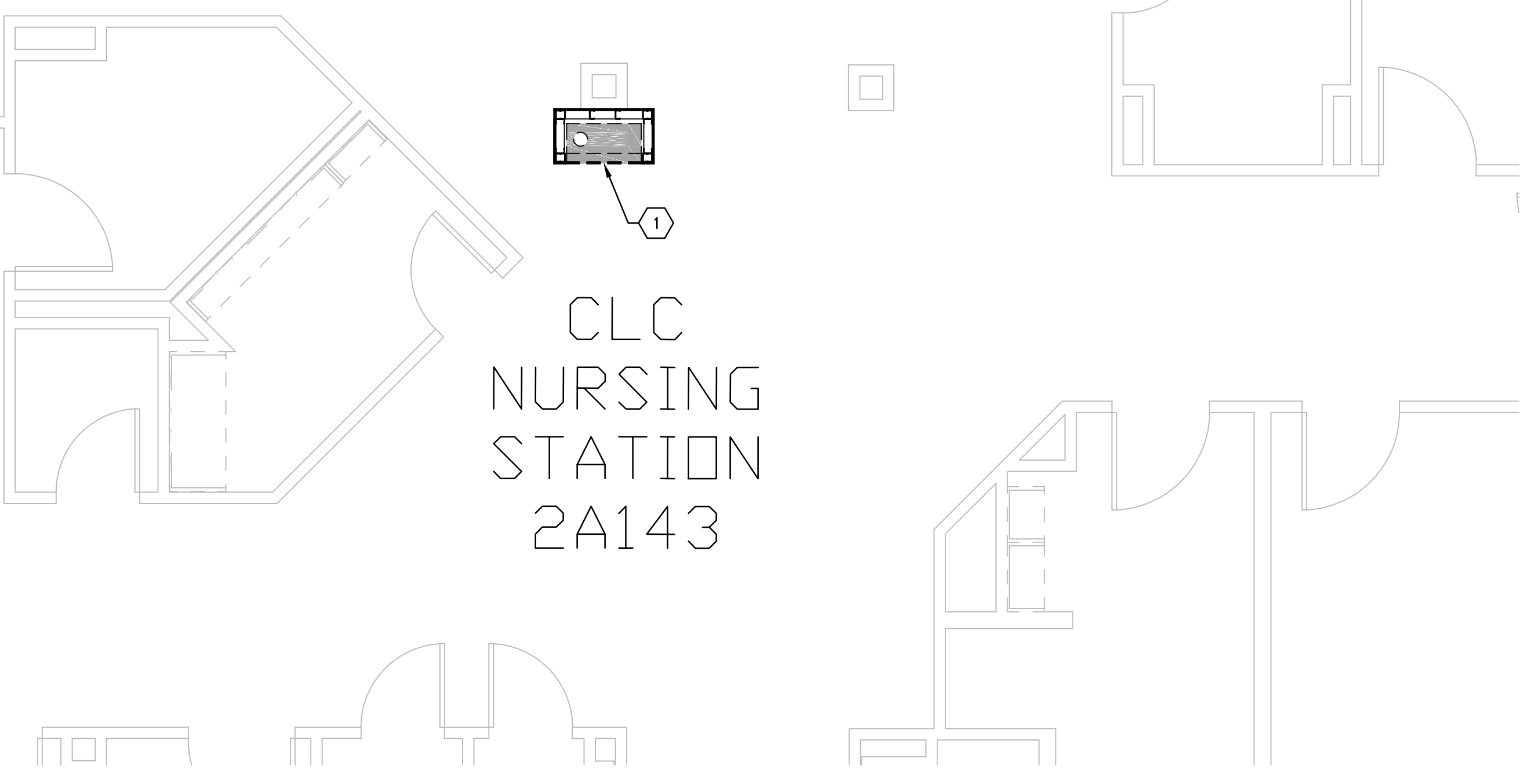
three inches = one foot  
one and one-half inches=one foot  
one inch=one foot  
three-quarters inch = one foot  
one-half inch = one foot  
three-eighths inch = one foot  
one-quarter inch = one foot  
one-eighth inch = one foot



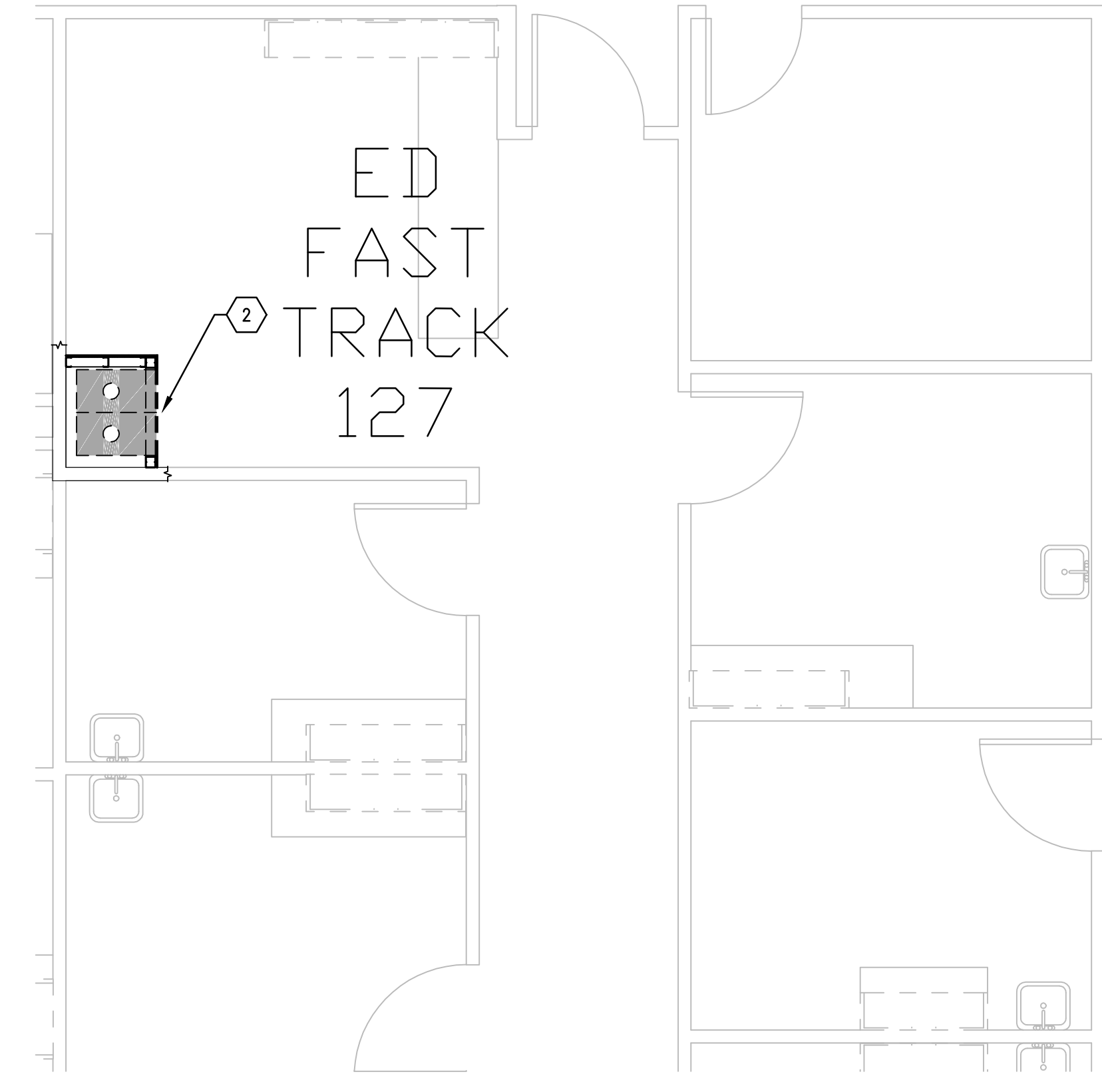
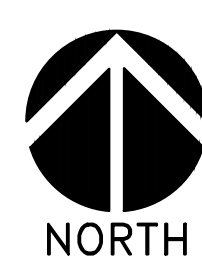
**(B1)** FIRST FLOOR PLAN, BLDG. CC; BLOOD DRAW 131  
SCALE: 1/4" = 1'-0" (STATIONS 6 & 8)



**(B6)** FIRST FLOOR PLAN, BLDG. CC; FUTURE E.D. EXPANSION  
SCALE: 1/4" = 1'-0" (STATION 35)



**(F1)** FIRST FLOOR PLAN, BLDG. CLC; NURSING STATION 2A143  
SCALE: 1/4" = 1'-0" (STATION 12)



**(F6)** FIRST FLOOR PLAN, BLDG. CC; ED FAST TRACK 127  
SCALE: 1/4" = 1'-0" (STATION 11)



GENERAL NOTES

- A. FIELD VERIFY ALL DIMENSIONS AND AVAILABLE CLEARANCES.
- B. COORDINATE ALL WORK AND PROJECT SCHEDULING WITH VA SAFETY, INFECTION CONTROL AND POLICE DEPARTMENTS.
- C. PROJECT CONSISTS OF FACILITY WIDE PNEUMATIC TUBE SYSTEM (PTS) INSTALLATION TO THE VA SAN ANTONIO AUDIE L. MURPHY VA HOSPITAL. AFFECTED BUILDINGS ARE AS FOLLOWS:  
BUILDING CC, HOSPITAL & ADMINISTRATION, SEVEN FLOORS  
BUILDING CLC, COMMUNITY LIVING CENTER, TWO FLOORS  
BUILDING PRG, POLYTRAUMA REHABILITATION CENTER, THREE FLOORS
- D. PROJECT SCOPE OF WORK (SOW) INCLUDES INSTALLATION OF A NEW PNEUMATIC TUBE SYSTEM THROUGHOUT THE HOSPITAL FACILITY. SCOPE SHALL INCLUDE THE FOLLOWING:  
1. INSTALLATION OF NEW GALVANIZED STEEL PNEUMATIC TUBING SUSPENDED FROM EXISTING STRUCTURE WITHIN INTERSTITIAL SPACES.  
2. INSTALLATION OF PNEUMATIC BLOWER UNITS.  
3. INSTALLATION OF PNEUMATIC TRANSFER UNITS.  
4. INSTALLATION OF PNEUMATIC TERMINAL UNITS.  
5. INSTALLATION OF PNEUMATIC ACCESSORIES SUCH AS CARRIER STORAGE UNITS AND ARRIVAL INDICATORS.  
6. ELECTRICAL UPGRADES TO ACCOMMODATE NEW EQUIPMENT.  
7. SELECT DEMOLITION.  
8. NEW FRAMING AND PARTITIONS FOR TERMINAL UNITS.  
9. NEW ARCHITECTURAL FINISHES.
- E. PTS ENCLOSURES SHALL BE CONSTRUCTED AS FOLLOWS:  
1. 3-5/8" X 20 GA GALVANIZED METAL STUDS AT 16" O.C. MAXIMUM.  
2. REMOVE FLOOR FINISHES TO SLAB PRIOR TO INSTALLATION OF BOTTOM TRACK.  
3. TOP TRACK SHALL EXTEND A MINIMUM OF 4" ABOVE FINISHED CEILING.  
4. ONE LAYER TYPE X GYPSUM BOARD, EXTERIOR FACE.  
5. PROTECT EXISTING ADJACENT FINISHES DURING CONSTRUCTION ACTIVITIES.  
6. NEW FINISHES SHALL MATCH EXISTING ADJACENT FINISHES.
- F. ACTUAL ENCLOSURE DIMENSIONS WILL VARY SLIGHTLY DEPENDING ON PTS MANUFACTURER SELECTED. HOLD DIMENSIONS AS CLOSE AS POSSIBLE TO MINIMIZE DISTURBANCE OF EXISTING ADJACENT WORK AREAS, EQUIPMENT, MILLWORK AND CASEWORK.
- G. CONFIRM WITH SELECTED PTS MANUFACTURER OF RATED PARTITION / ENCLOSURE REQUIREMENTS.

KEY NOTES

- 1. NEW SINGLE DROP PTS STATION, FULLY ENCLOSED THREE SIDES.
- 2. NEW DUAL DROP PST STATION, FULLY ENCLOSED.
- 3. COORDINATE EXACT LOCATION AND PLACEMENT WITH EXISTING EQUIPMENT AND CASEWORK.
- 4. EXACT STATION LOCATION PENDING FUTURE E.D. EXPANSION FLOOR PLAN; COORDINATE FINAL CONFIGURATION WITH VA COR. PROVIDE PNEUMATIC TUBE ROUGH-IN AND CAP LINES, ELECTRICAL AND DATA CONNECTIONS. TUBE STATION TERMINAL UNIT SHALL BE STORED BY THE VA UNTIL AREA REMODELING IS COMPLETE.

100% CONSTRUCTION ISSUE

Revisions Date	FEI Project No.: 13069	MPI Architects Architecture ■ Planning ■ Interior Design 4949 Addison Circle ■ Addison, Texas 75001 MPI Project No.: 8130707	Seal ARCHITECTS & PLANNERS 1059 4/24/15	Seal	Drawing Title BUILDINGS CC & CLC FIRST FLOOR PLAN PTS STATION LOCATIONS	Project Title AUDIE L. MURPHY VA HOSPITAL PNEUMATIC TUBE SYSTEM UPGRADE	Date 4/24/15		
					Approved: Area Project Manager	Building Number CC, CLC	Checked DJD	Drawn AR/DC	Project No. 671-13-104
					Location 7400 Merton Minter San Antonio, TX 78229		Drawing No. A402	South Texas Veterans Health Care System	
							Dwg. of		STVHCS San Antonio, Texas