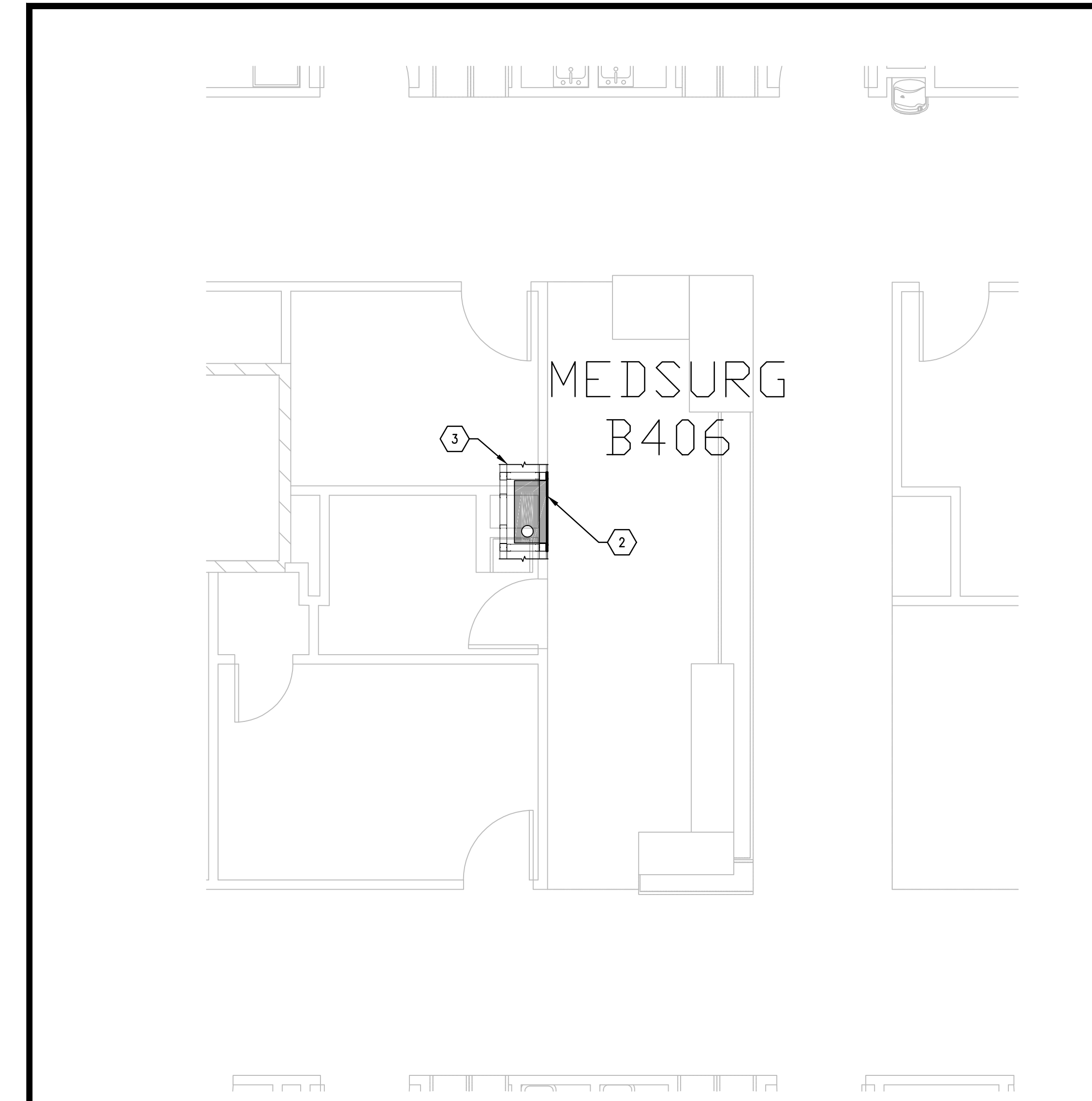
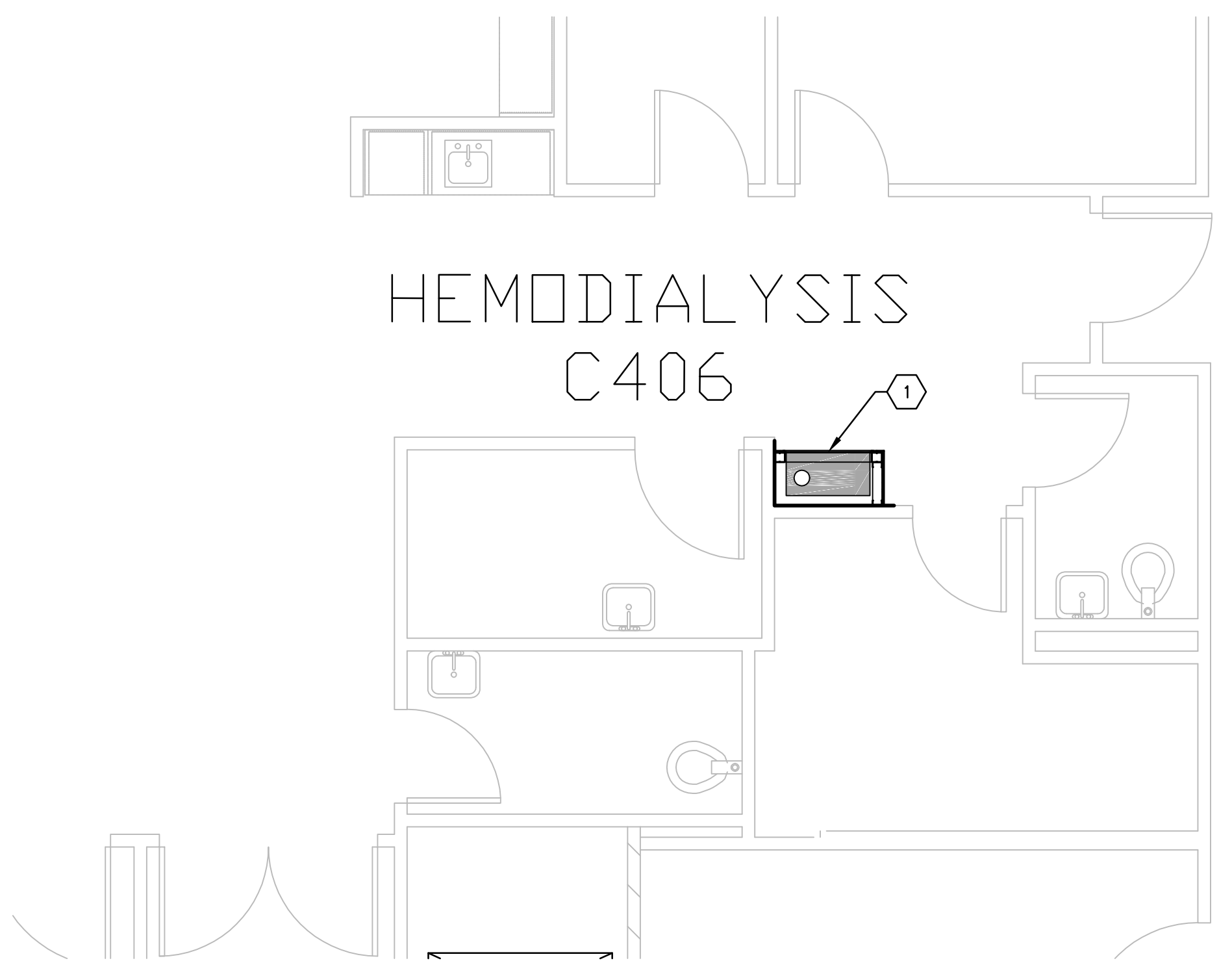


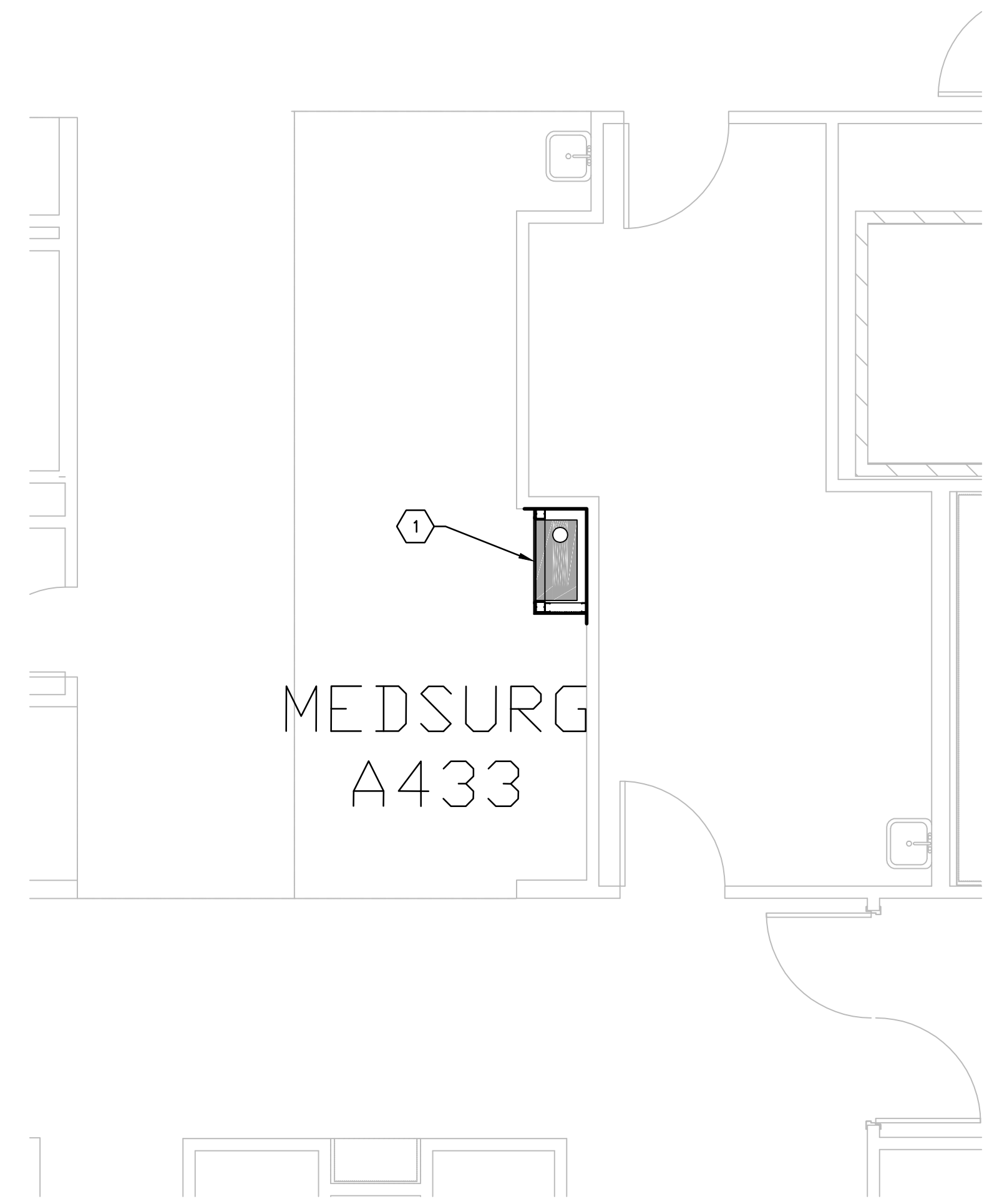
three inches = one foot
one and one-half inches=one foot.
one inch=one foot
three-quarters inch = one foot
one-half inch = one foot
three-eighths inch = one foot
one-quarter inch = one foot
one-eighth inch = one foot



C1 FOURTH FLOOR PLAN, BLDG. CC; MEDSURG NURSE STATION B406
SCALE: 1/4" = 1'-0"
(STATION 24)



C4 FOURTH FLOOR PLAN, BLDG. CC; HEMODIALYSIS C406
SCALE: 1/4" = 1'-0"
(STATION 25)



F4 FOURTH FLOOR PLAN, BLDG. CC; MEDSURG NURSE STATION A433
SCALE: 1/4" = 1'-0"
(STATION 23)



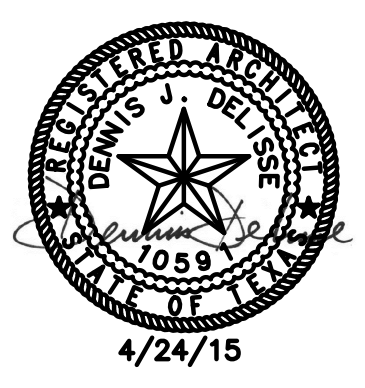


GENERAL NOTES

- A. FIELD VERIFY ALL DIMENSIONS AND AVAILABLE CLEARANCES.
- B. COORDINATE ALL WORK AND PROJECT SCHEDULING WITH VA SAFETY, INFECTION CONTROL AND POLICE DEPARTMENTS.
- C. PROJECT CONSISTS OF FACILITY WIDE PNEUMATIC TUBE SYSTEM (PTS) INSTALLATION TO THE VA SAN ANTONIO AUDIE L. MURPHY VA HOSPITAL. AFFECTED BUILDINGS ARE AS FOLLOWS:
BUILDING CC, HOSPITAL & ADMINISTRATION, SEVEN FLOORS
BUILDING CLC, COMMUNITY LIVING CENTER, TWO FLOORS
BUILDING PRC, POLYTRAUMA REHABILITATION CENTER, THREE FLOORS
- D. PROJECT SCOPE OF WORK (SOW) INCLUDES INSTALLATION OF A NEW PNEUMATIC TUBE SYSTEM THROUGHOUT THE HOSPITAL FACILITY. SCOPE SHALL INCLUDE THE FOLLOWING:
1. INSTALLATION OF NEW GALVANIZED STEEL PNEUMATIC TUBING SUSPENDED FROM EXISTING STRUCTURE WITHIN INTERSTITIAL SPACES.
2. INSTALLATION OF PNEUMATIC BLOWER UNITS.
3. INSTALLATION OF PNEUMATIC TRANSFER UNITS.
4. INSTALLATION OF PNEUMATIC TERMINAL UNITS.
5. ELECTRICAL UPGRADES TO ACCOMMODATE NEW EQUIPMENT.
6. SELECT DEMOLITION.
7. NEW FRAMING AND PARTITIONS FOR TERMINAL UNITS.
8. NEW ARCHITECTURAL FINISHES.
- E. PTS ENCLOSURES SHALL BE CONSTRUCTED AS FOLLOWS:
1. 3-5/8" X 20 GA GALVANIZED METAL STUDS AT 16" O.C. MAXIMUM.
2. REMOVE FLOOR FINISHES TO SLAB PRIOR TO INSTALLATION OF BOTTOM TRACK.
3. TOP TRACK SHALL EXTEND A MINIMUM OF 4" ABOVE FINISHED CEILING.
4. ONE LAYER TYPE X GYPSUM BOARD, EXTERIOR FACE.
5. PROTECT EXISTING ADJACENT FINISHES DURING CONSTRUCTION ACTIVITIES.
6. NEW FINISHES SHALL MATCH EXISTING ADJACENT FINISHES.
- F. ACTUAL ENCLOSURE DIMENSIONS WILL VARY SLIGHTLY DEPENDING ON PTS MANUFACTURER SELECTED. HOLD DIMENSIONS AS CLOSE AS POSSIBLE TO MINIMIZE DISTURBANCE OF EXISTING ADJACENT WORK AREAS, EQUIPMENT, MILLWORK AND CASEWORK.
- G. CONFIRM WITH SELECTED PTS MANUFACTURER OF RATED PARTITION / ENCLOSURE REQUIREMENTS.

KEY NOTES

- 1. NEW SINGLE DROP PST STATION, FULLY ENCLOSED.
- 2. NEW SINGLE DROP PST STATION, UTILIZE EXISTING SPACE.; FIELD VERIFY CLEARANCE AVAILABILITY.
- 3. DEPENDING ON MANUFACTURER SELECTED, NEW EQUIPMENT INSTALLATION MAY REQUIRE ADDITIONAL SPACE FOR INSTALLATION, IF REQUIRED, EXPAND INTO ADJACENT SPACE. PATCH, REPAIR AND FINISH TO MATCH EXISTING MATERIALS.

100% CONSTRUCTION ISSUE

Revisions	Date	 2201 N Collins, Suite 295 Arlington, Texas 76011-2055 (817) 461-5337 Fax: (817) 461-1105 MECHANICAL • ELECTRICAL • PLUMBING FEI Project No.: 13069	 Architecture • Planning • Interior Design 4949 Addison Circle • Addison, Texas 75001 MPI Project No.: 8130707	 4/24/15	 NORTH	Drawing Title BUILDING CC – TOWER FOURTH FLOOR PLAN PTS STATION LOCATIONS		Project Title AUDIE L. MURPHY VA HOSPITAL PNEUMATIC TUBE SYSTEM UPGRADE		Date 4/24/15	 STVHCS San Antonio, Texas	
						Approved: Area Project Manager		Building Number CC	Checked DJD	Drawn AR/DC		Project No. 671-13-104
						Location 7400 Merton Minter San Antonio, TX 78229		Drawing No. A406		Dwg. of		