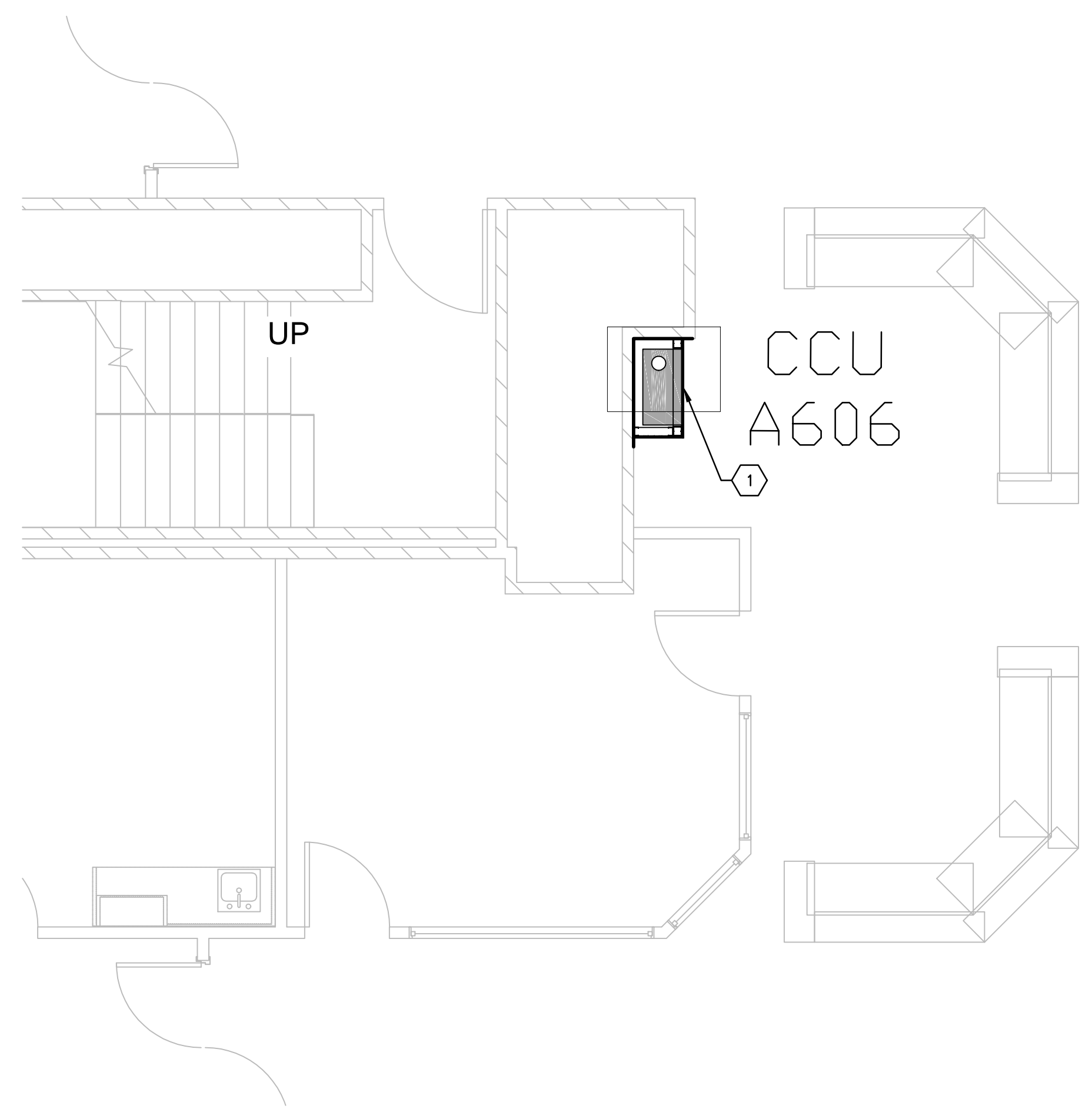


three inches = one foot
one and one-half inches=one foot
one inch=one foot
three-quarters inch = one foot
one-half inch = one foot
three-eighths inch = one foot
one-quarter inch = one foot
one-eighth inch = one foot



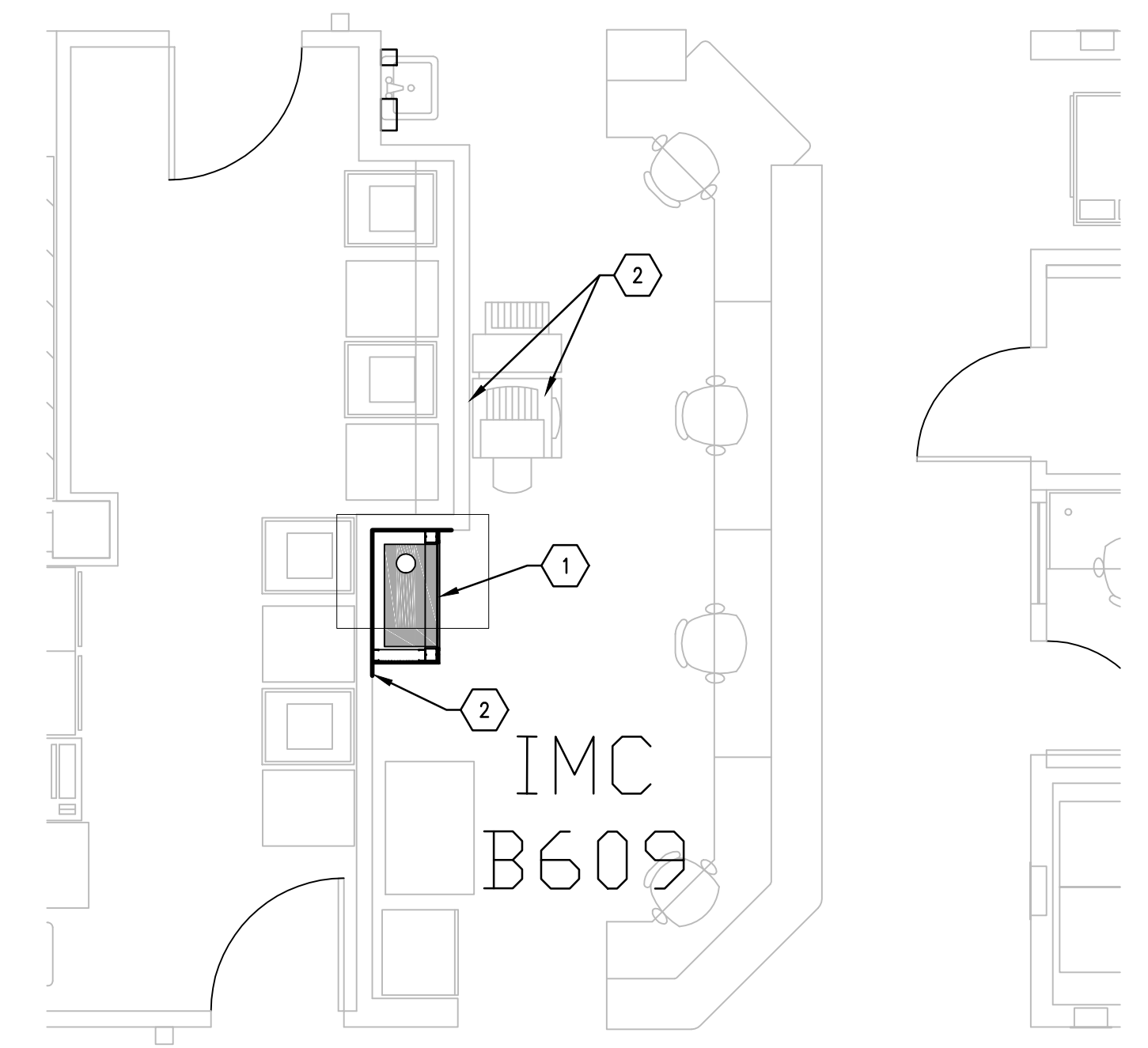
C1 SIXTH FLOOR PLAN, BLDG. CC; CATH LAB 2 C606
SCALE: 1/4" = 1'-0"

(STATION 31)



F1 SIXTH FLOOR PLAN, BLDG. CC; CCU NURSE STATION A606
SCALE: 1/4" = 1'-0"

(STATION 29)



F4 SIXTH FLOOR PLAN, BLDG. CC; IMC NURSE STATION B609
SCALE: 1/4" = 1'-0"

(STATION 30)



GENERAL NOTES

- A. FIELD VERIFY ALL DIMENSIONS AND AVAILABLE CLEARANCES.
- B. COORDINATE ALL WORK AND PROJECT SCHEDULING WITH VA SAFETY, INFECTION CONTROL AND POLICE DEPARTMENTS.
- C. PROJECT CONSISTS OF FACILITY WIDE PNEUMATIC TUBE SYSTEM (PTS) INSTALLATION TO THE VA SAN ANTONIO AUDIE L. MURPHY VA HOSPITAL. AFFECTED BUILDINGS ARE AS FOLLOWS:
BUILDING CC, HOSPITAL & ADMINISTRATION, SEVEN FLOORS
BUILDING CLC, COMMUNITY LIVING CENTER, TWO FLOORS
BUILDING PRC, POLYTRAUMA REHABILITATION CENTER, THREE FLOORS
- D. PROJECT SCOPE OF WORK (SOW) INCLUDES INSTALLATION OF A NEW PNEUMATIC TUBE SYSTEM THROUGHOUT THE HOSPITAL FACILITY. SCOPE SHALL INCLUDE THE FOLLOWING:
1. INSTALLATION OF NEW GALVANIZED STEEL PNEUMATIC TUBING SUSPENDED FROM EXISTING STRUCTURE WITHIN INTERSTITIAL SPACES.
2. INSTALLATION OF PNEUMATIC BLOWER UNITS.
3. INSTALLATION OF PNEUMATIC TRANSFER UNITS.
4. INSTALLATION OF PNEUMATIC TERMINAL UNITS.
5. INSTALLATION OF PNEUMATIC ACCESSORIES SUCH AS CARRIER STORAGE UNITS AND ARRIVAL INDICATORS.
6. ELECTRICAL UPGRADES TO ACCOMMODATE NEW EQUIPMENT.
7. SELECT DEMOLITION.
8. NEW FRAMING AND PARTITIONS FOR TERMINAL UNITS.
9. NEW ARCHITECTURAL FINISHES.
- E. PTS ENCLOSURES SHALL BE CONSTRUCTED AS FOLLOWS:
1. 3-5/8" X 20 GA GALVANIZED METAL STUDS AT 16" O.C. MAXIMUM.
2. REMOVE FLOOR FINISHES TO SLAB PRIOR TO INSTALLATION OF BOTTOM TRACK.
3. TOP TRACK SHALL EXTEND A MINIMUM OF 4" ABOVE FINISHED CEILING.
4. ONE LAYER TYPE X GYPSUM BOARD, EXTERIOR FACE.
5. PROTECT EXISTING ADJACENT FINISHES DURING CONSTRUCTION ACTIVITIES.
6. NEW FINISHES SHALL MATCH EXISTING ADJACENT FINISHES.
- F. ACTUAL ENCLOSURE DIMENSIONS WILL VARY SLIGHTLY DEPENDING ON PTS MANUFACTURER SELECTED. HOLD DIMENSIONS AS CLOSE AS POSSIBLE TO MINIMIZE DISTURBANCE OF EXISTING ADJACENT WORK AREAS, EQUIPMENT, MILLWORK AND CASEWORK.
- G. CONFIRM WITH SELECTED PTS MANUFACTURER OF RATED PARTITION / ENCLOSURE REQUIREMENTS.

KEY NOTES

- 1. NEW SINGLE DROP PST STATION, FULLY ENCLOSED.
- 2. RELOCATED EXISTING OFFICE EQUIPMENT AND ASSOCIATED POWER AND DATA CONNECTIONS.

100% CONSTRUCTION ISSUE

Revisions Date	 2201 N Collins, Suite 205 Arlington, Texas 76011-2055 (817) 461-5337 Fax: (817) 461-1105 MECHANICAL • ELECTRICAL • PLUMBING FEI Project No.: 13069	 Architecture • Planning • Interior Design 4949 Addison Circle • Addison, Texas 75001 MPI Project No.: 8130707			Drawing Title BUILDING CC – TOWER SIXTH FLOOR PLAN PTS STATION LOCATIONS	Project Title AUDIE L. MURPHY VA HOSPITAL PNEUMATIC TUBE SYSTEM UPGRADE	Date 4/24/15	 STVHCS San Antonio, Texas		
					Approved: Area Project Manager	Building Number CC	Checked DJD		Drawn AR/DC	Project No. 671-13-104
					Location 7400 Merton Minter San Antonio, TX 78229		Drawing No. A408		Dwg. of	