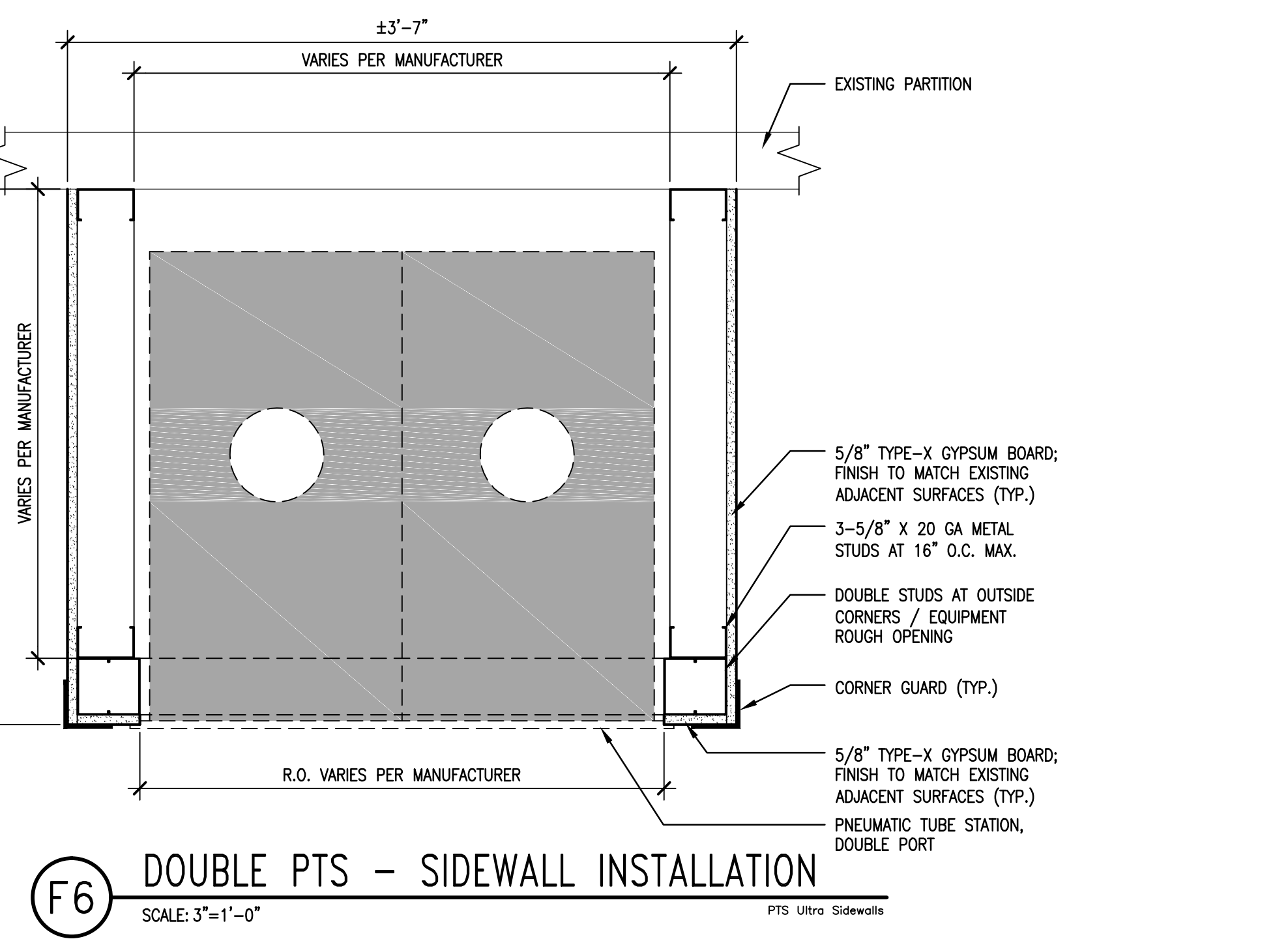
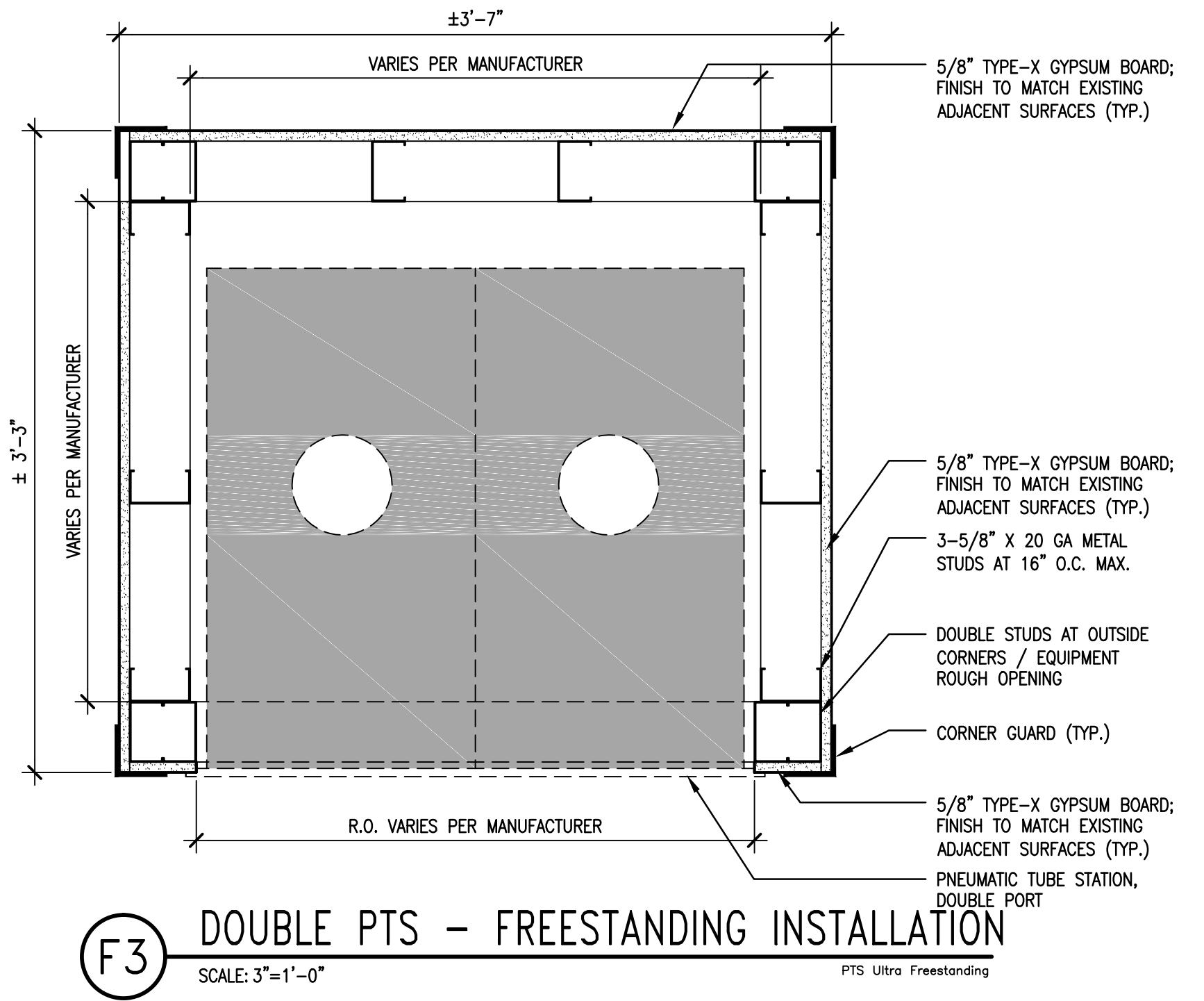
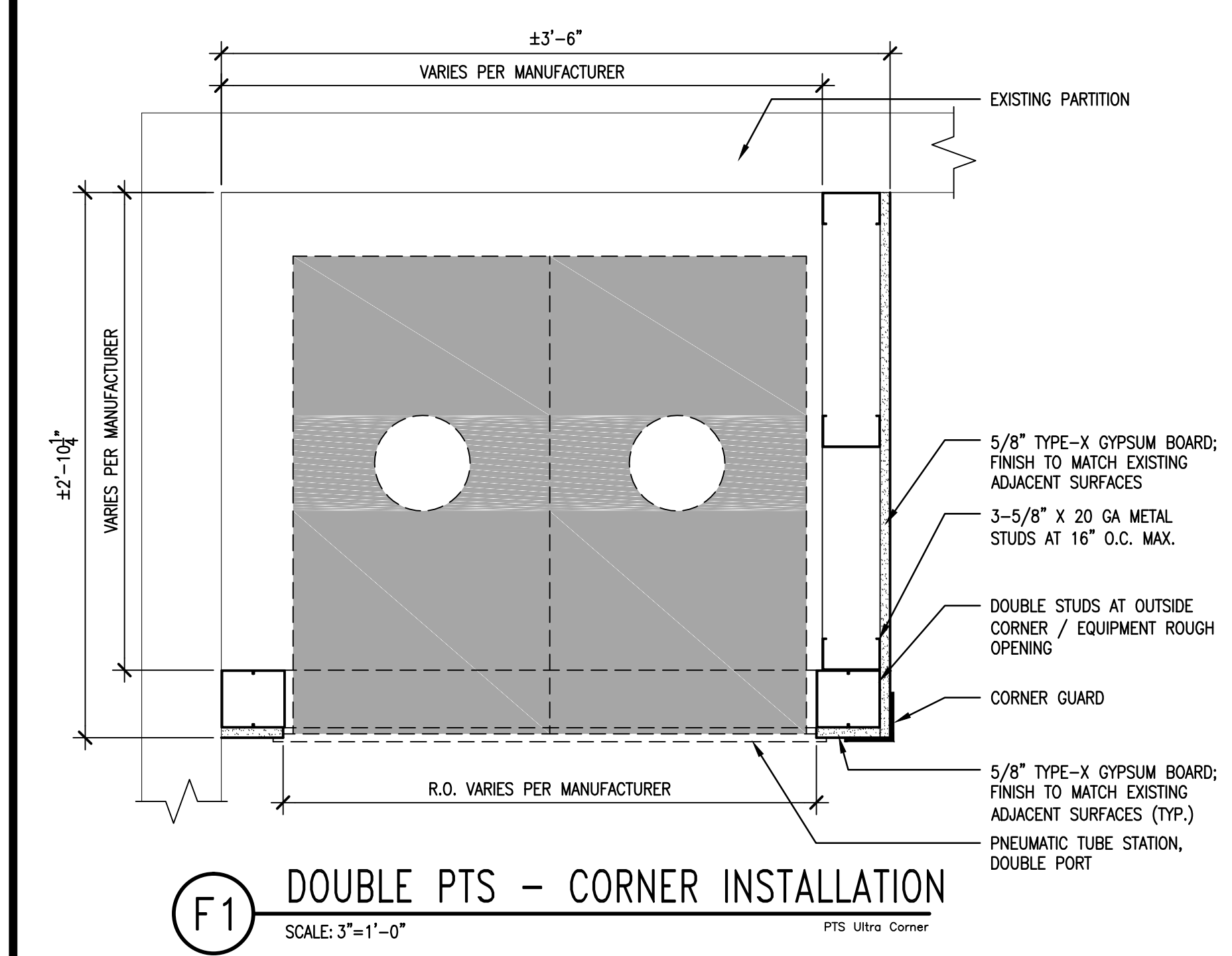
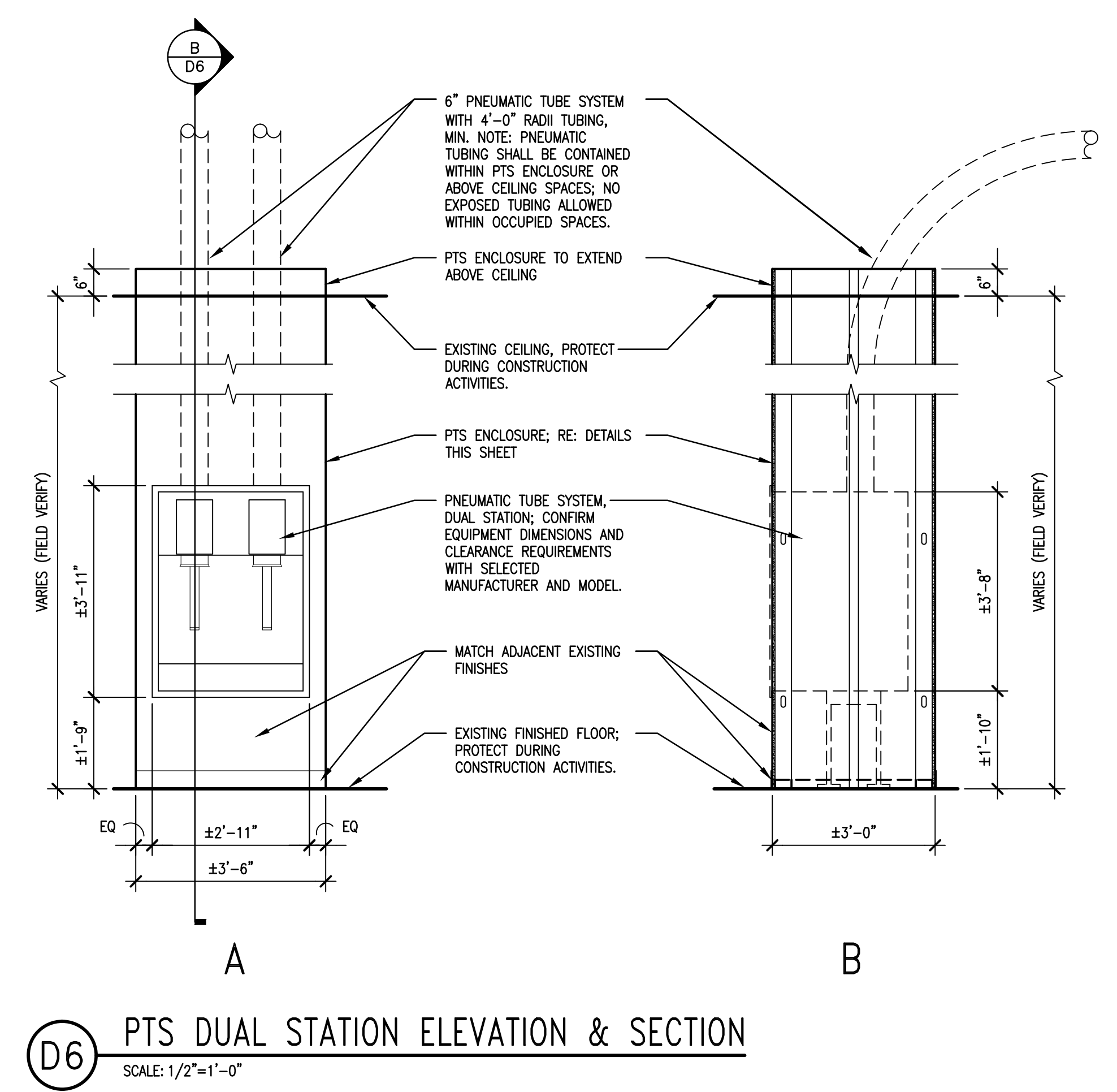
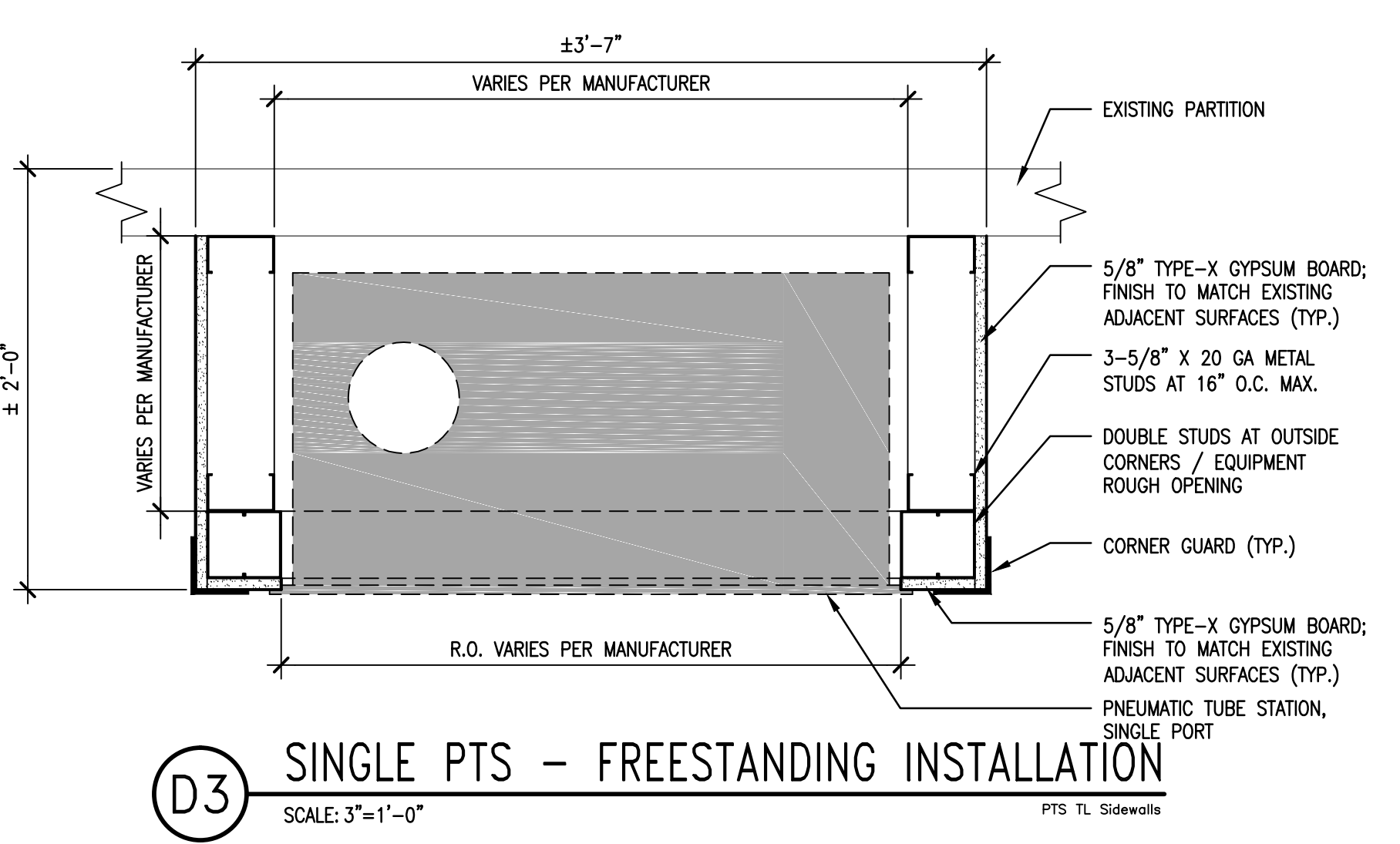
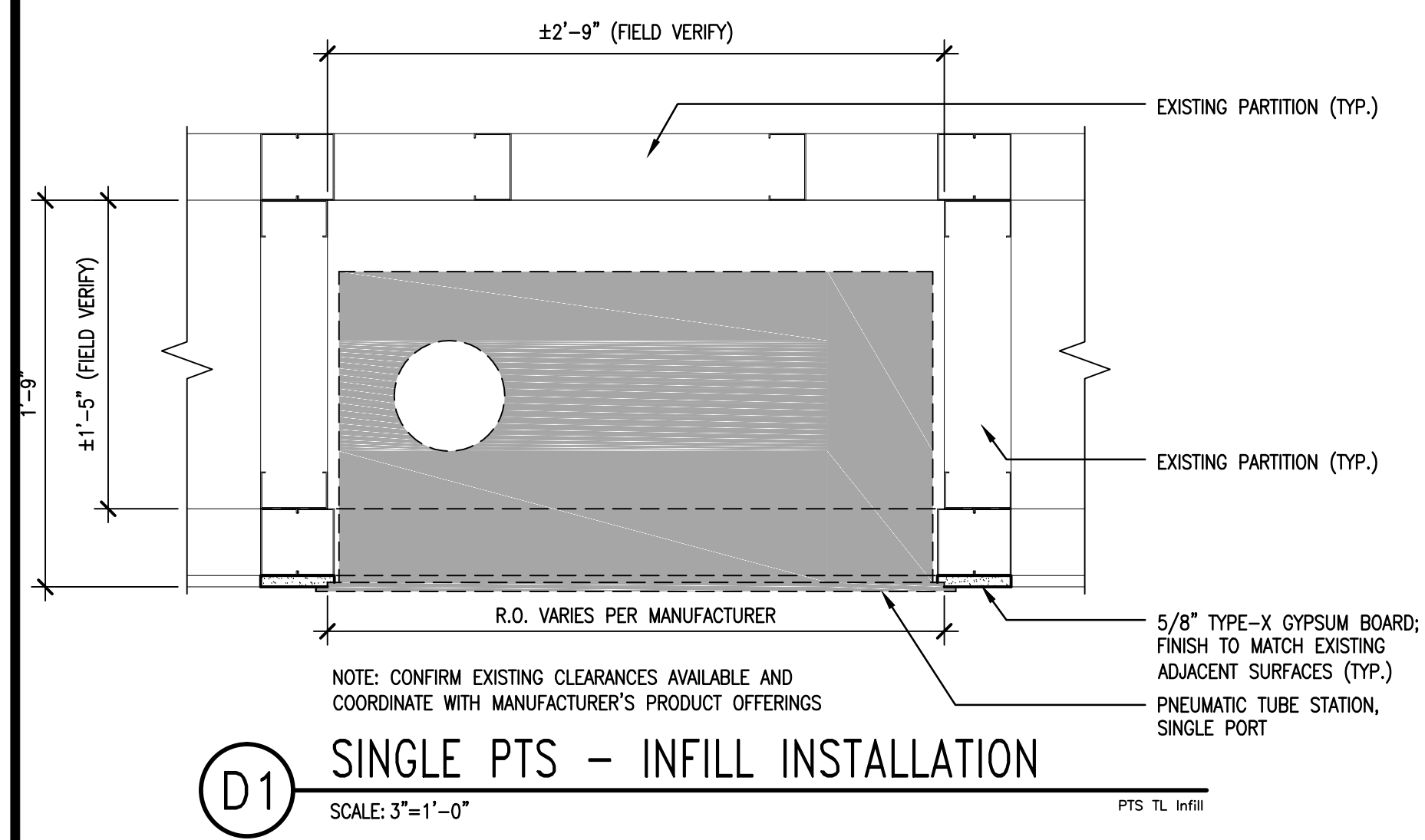
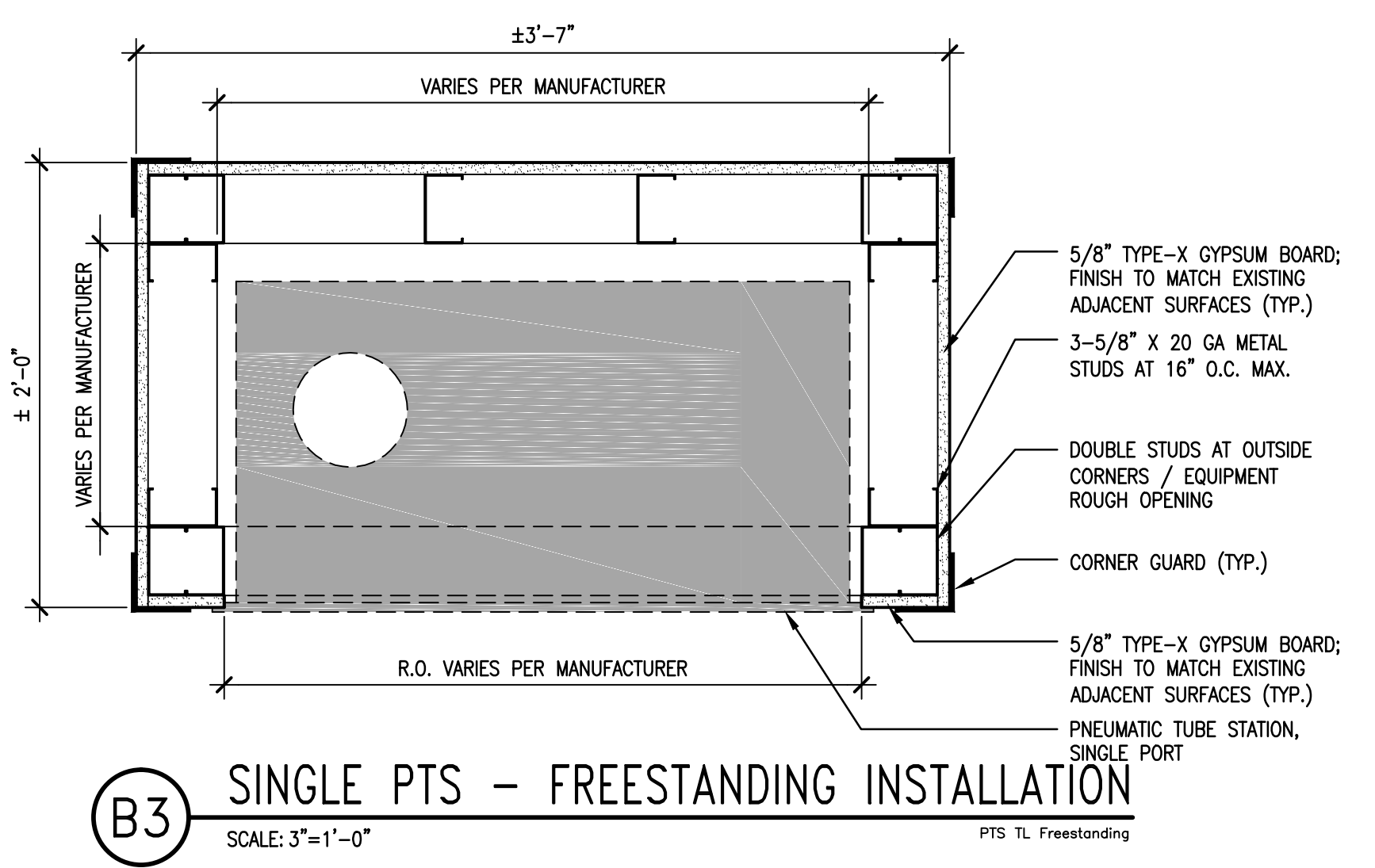
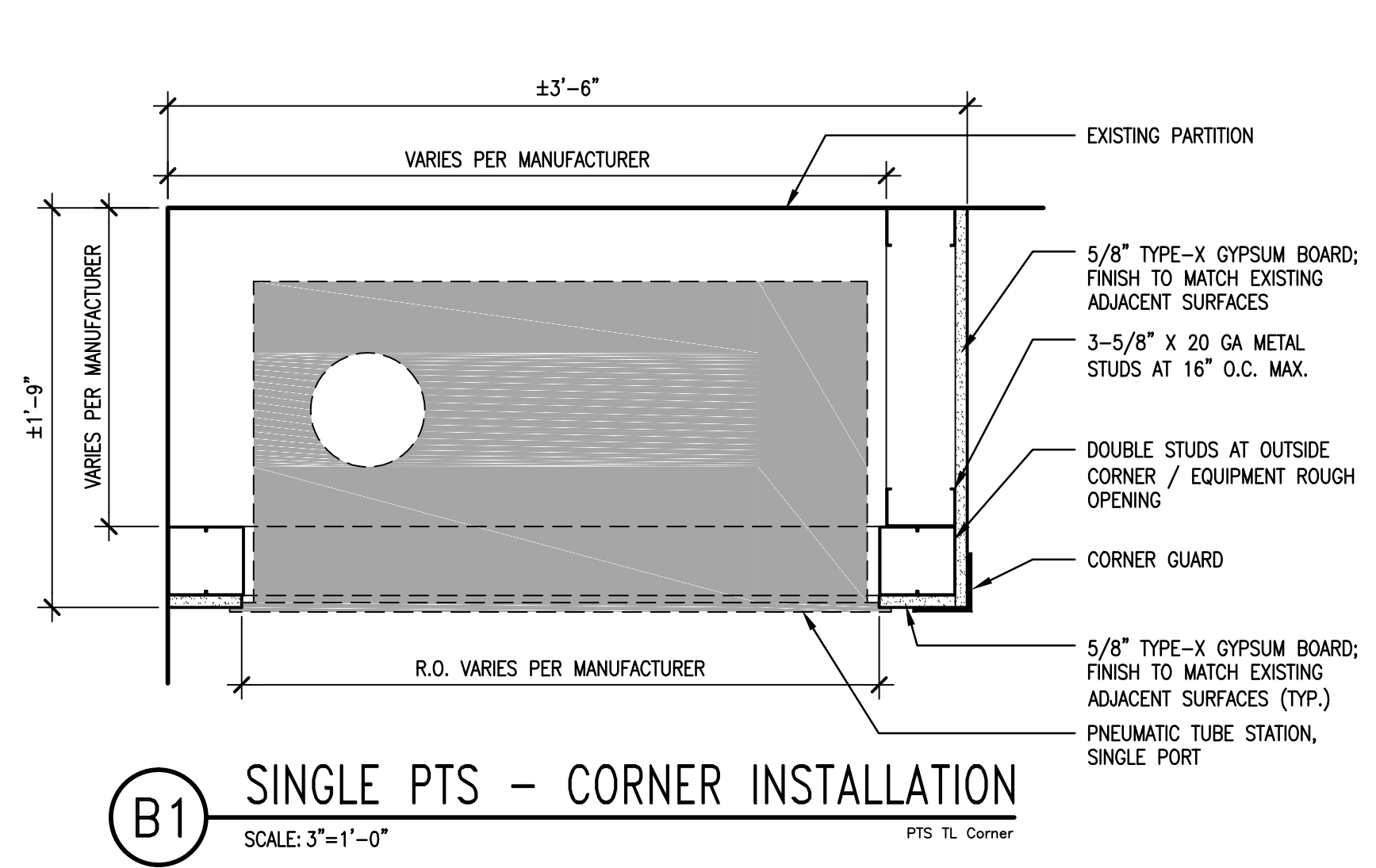


three inches = one foot
one and one-half inches = one foot
one inch = one foot
three-quarters inch = one foot
one-half inch = one foot
three-eighths inch = one foot
one-quarter inch = one foot
one-eighth inch = one foot

Computer Filename: _____

Revisions _____ Date _____



- GENERAL NOTES**
- A. REFER TO SPECIFICATION SECTION 14 92 00 FOR PNEUMATIC TUBE SYSTEM (PTS) REQUIREMENTS.
 - B. DETAILS SHOWN ARE FOR GENERAL REFERENCE. ACTUAL EQUIPMENT DIMENSIONS WILL VARY DEPENDING ON PTS MANUFACTURER SELECTED. COORDINATE ENCLOSURE DIMENSIONS, CLEARANCES AND INSTALLATION REQUIREMENTS ACCORDINGLY.
 - C. PROTECT EXISTING ADJACENT FINISHES DURING CONSTRUCTION ACTIVITIES.
 - D. NEW FINISHES SHALL MATCH EXISTING ADJACENT FINISHES.
 - E. REFER TO PTS DEPARTMENT STATION SCHEDULE, SHEET A601 FOR STATION TYPE (SINGLE OR DOUBLE), BUILDING, DEPARTMENT, ROOM LOCATIONS AND NOTES.
 - F. COORDINATE DEMOLITION AND CONSTRUCTION ACTIVITIES WITH VA INFECTION CONTROL.
 - G. FIELD VERIFY ALL DIMENSIONS AND AVAILABLE CLEARANCES.
 - H. REFER TO SPECIFICATION FOR MATERIAL ABATEMENT RELATED REQUIREMENTS.

100% CONSTRUCTION ISSUE

 2201 N. Collins, Suite 205 Arlington, Texas 76011-2055 (817) 461-5337 Fax: (817) 461-1025 MECHANICAL • ELECTRICAL • PLUMBING FEI Project No.: 13069	 Architecture • Planning • Interior Design 4949 Addison Circle • Addison, Texas 75001 MPI Project No.: 8130707			Drawing Title DETAILS		Project Title AUDIE L. MURPHY VA HOSPITAL PNEUMATIC TUBE SYSTEM UPGRADE		Date 4/24/15			
				Approved: Area Project Manager		Building Number CC, CLC, PRC		Checked DJD		Drawn AR/DC	
				Location 7400 Merton Minter San Antonio, TX 78229		Drawing No. A501		Dwg. of			

