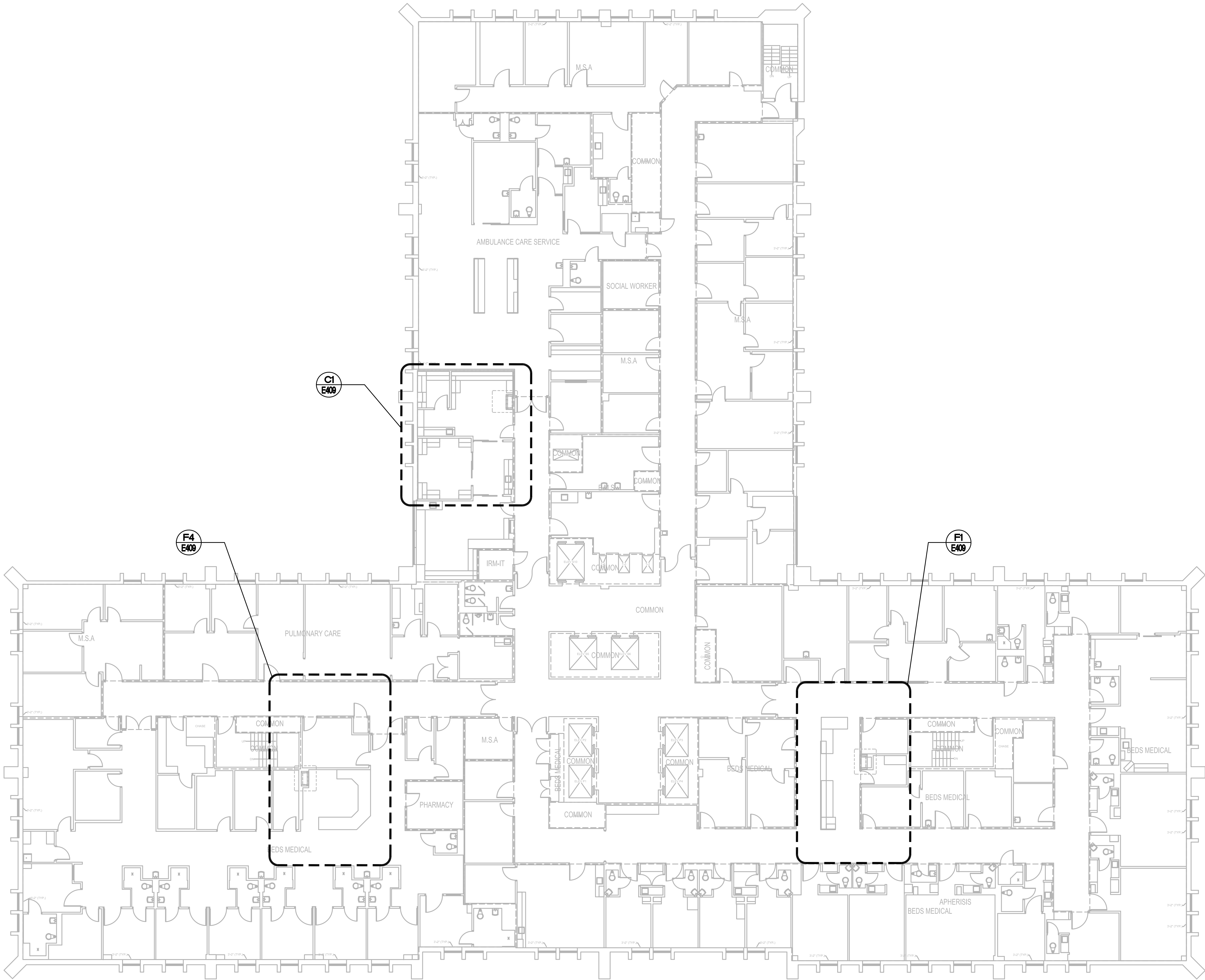


0 6 1 0 2 0 2 0 4 0 4 0 8 0 4 0 12 0 24

three inches = one foot
one and one-half inches=one foot
one inch=one foot
three-quarters inch = one foot
one-half inch = one foot
three-eighths inch = one foot
one-quarter inch = one foot
one-eighth inch = one foot

A
B
C
D
E
F

Computer Filename:



F1 SEVENTH FLOOR PLAN, BLDG. CC
SCALE: 1" = 10'-0"



SEVENTH FLOOR

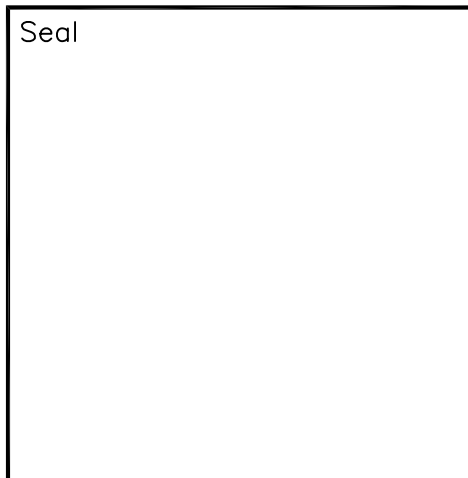
GENERAL NOTES:

1. REFER TO MEP000 FOR ADDITIONAL NOTES.
2. THE PNEUMATIC TUBE SYSTEM INFRASTRUCTURE DESIGN HEREIN BASED ON SWISSLOG HEALTHCARE SOLUTIONS EQUIPMENT. THE VA RESERVES THE RIGHT FOR APPROVAL OF ALTERNATE PNEUMATIC TUBE SYSTEMS MANUFACTURER.
3. CONTRACTOR SHALL RE-ROUTE ANY DUCTWORK, MECHANICAL OR PLUMBING PIPING, DAMPERS OR TERMINAL BOXES LOCATED IN THE CEILING PLENUM AS REQUIRED TO ACCOMMODATE NEW PNEUMATIC OR ASSOCIATED EQUIPMENT.

Revisions	Date



2201 N. Collins, Suite 295
Arlington, Texas 76011-2609
(817) 461-0333 Fax: (817) 461-0325
FBI PROJECT # 13069
FEI Project No.: 13069



BUILDING CC
SEVENTH FLOOR PLAN
Approved: Area Project Manager

Project Title
AUDIE L. MURPHY VA HOSPITAL
PNEUMATIC TUBING SYSTEM
Building Number
CC
Location 7400 Merton Minter
San Antonio, TX 78229

Date
04/24/15
Project No.
671-13-104
Drawing No.
E108
Dwg. of



STVHCS
San Antonio, Texas

100% CONSTRUCTION ISSUE